

A photograph of a modern rooftop terrace. In the foreground, there are two long wooden sofas with light-colored cushions and several throw pillows. Between the sofas are two low wooden coffee tables. The terrace floor is made of large, light-colored stone tiles. In the background, there is a large body of water, a dense line of trees, and a city skyline under a cloudy sky. A glass railing is visible on the left side of the terrace. A large white crosshair graphic is overlaid in the top right corner.

woodberrypark

London N4

waters edge floorplans

Berkeley
Designed for life

Welcome To Woodberry Park



“The over-arching concept was to create a complete living environment and to reinterpret traditional London tree-lined streets and squares in a contemporary way”

Matt Lally, Director, Matrix Partnership Ltd (Woodberry Park Masterplanners)

1

Woodberry Park - A place in the making

WOODBERRY PARK - A PLACE IN THE MAKING

North London's Woodberry Park is an innovative Regeneration Project which, once complete, will feature 4,600 new homes set in 64 acres adjacent to the spectacular natural surroundings of two existing reservoirs and Finsbury Park, all within a short distance of Central London and the City. It is a sustainable development, committed to the natural environment and energy conservation, enhancing the area's abundant wildlife.

These improvements, alongside excellent transport connections, will ensure that Woodberry Park becomes a vibrant urban neighbourhood offering residents a unique opportunity to live in a dynamic city environment within natural surroundings.

Master planning for Woodberry Park, one of London's largest regeneration projects has focused on creating a sustainable community, with large and improved public open spaces as well as new community facilities.

2012
This year will see the completion of the first 800 new homes and the new retail provision at the heart of the development. This will be supported by a new Academy for 11 – 19 year olds, landscaped riverside walks and a new state-of-the art Community Facility.

2014
This year will see the completion of the first new homes at Waters Edge, with over 1,100 new homes complete. Work will also be underway on the new Spring Park.

2018
Waters Edge and surrounding buildings will be fully complete delivering over 2,000 new homes. A new riverside and a central park within the development will be open for public use. Additional retail provisions will also be complete, creating a central hub to the development.

2020
Almost 3,000 homes will be built. All of the southern element of the development and the Riverside walk will now be fully completed.



PHASE 1	PHASE 2
The Residence	Waters Edge
City Riverside	
City Waterside	

Disclaimer: The above information is indicative only at this stage and subject to change.

2 *Reservoirs* RESERVOIRS

For those who enjoy the outdoors, the West Reservoir located across from the development is home to a Water Sports Centre, an ideal place to participate in water activities or study the local environment. Activities include sailing, kayaking and canoeing courses; many of which are very popular and receive lots of interest from locals.

The Waterfront Café on the edge of the West Reservoir provides an ideal place to relax in the sun with stunning water views.

The East Reservoir has been developed into a special place for local people, wildlife, gardeners and nature enthusiasts with the help of schools, wildlife clubs, local residents, corporate volunteers and members of the outreach programmes. The Wildlife Trust run activities around the

East Reservoir, including bird watching walks, evening bat and moth walks, as well as history and heritage and tree walks. These programmes and events based around the East Reservoir make the most of the outstanding natural environment around Woodberry Park.

The New River, which runs alongside more than 40 acres of open water, is classified as a site of ecological importance. It provides an important habitat for various wildlife and birds, including the common toad which Berkeley has carefully relocated from the development site whilst construction works took place, attracting naturalists and bird lovers from all over the country.



River walkway at Woodberry Park

“The development aims to absorb ecology right into the green corridors so nature is brought into the heart of the site.”

John Murdoch, Managing Director of Murdoch Wickham Landscape Architects

3 THE NEXT PHASE

Waters Edge will be the next phase at Woodberry Park and will feature 405 apartments, ranging in size from studios to penthouses, offering stunning views across the tranquil setting of the East Reservoir. A 30-storey tower will form a focal point, with smaller buildings arranged alongside the water.

Each individual apartment and common area's space and design have been meticulously planned.

There are six different specifications for purchasers to select from which all feature high quality fittings throughout, including engineered wooden flooring, carpets, large format porcelain tiles, state of the art technology in the kitchen and under floor heating throughout.

Purchasers will have the choice of six colour schemes (where applicable), which have been inspired by natural materials and colours.

Lava is a dramatic colour scheme, featuring dark greys and charcoals to kitchens and bathrooms. *Shell* incorporates warm oak floors and buff limestone tones to create a light natural feel. *Heather* combines plum and aubergine accents to evoke a sophisticated look. *Smoke* is a contemporary option, coupling pastel greys and dusky blues for a modern feel. *Sand* merges limed oak, sandstone and taupe to create a bright sophisticated setting. And finally *Clay* couples dark taupe carpets and natural tumbled stone mosaic tiles to create a rich earthy feel.

Each apartment will benefit from private outdoor space, be it a balcony, garden or roof terrace. Bio diverse and sustainable green roofs have been incorporated into the design, featuring bird boxes, photo voltaic panels, and even bee hotels.

Residents will benefit from 24 hour concierge. Security is enhanced through the use of electronic entry keypads, ensuring peace of mind.

Natural views of Waters Edge from across the water



Breathtaking views from penthouse terrace



Site plan

SITE PLAN



The next phase of the Woodberry Park Regeneration Project is located on the East Reservoir and will consist of a mix of 405 studio, one, two and three bedroom apartments and penthouses with private courtyards including a residents only gym, swimming pool and spa facilities. Waters Edge will be the first building within this phase, with completion anticipated at the end of 2013.

WATERS EDGE

TOTAL NUMBER OF UNITS	95
STUDIOS	7
1 BED APARTMENTS	18
2 BED APARTMENTS	39
3 BED APARTMENTS	31

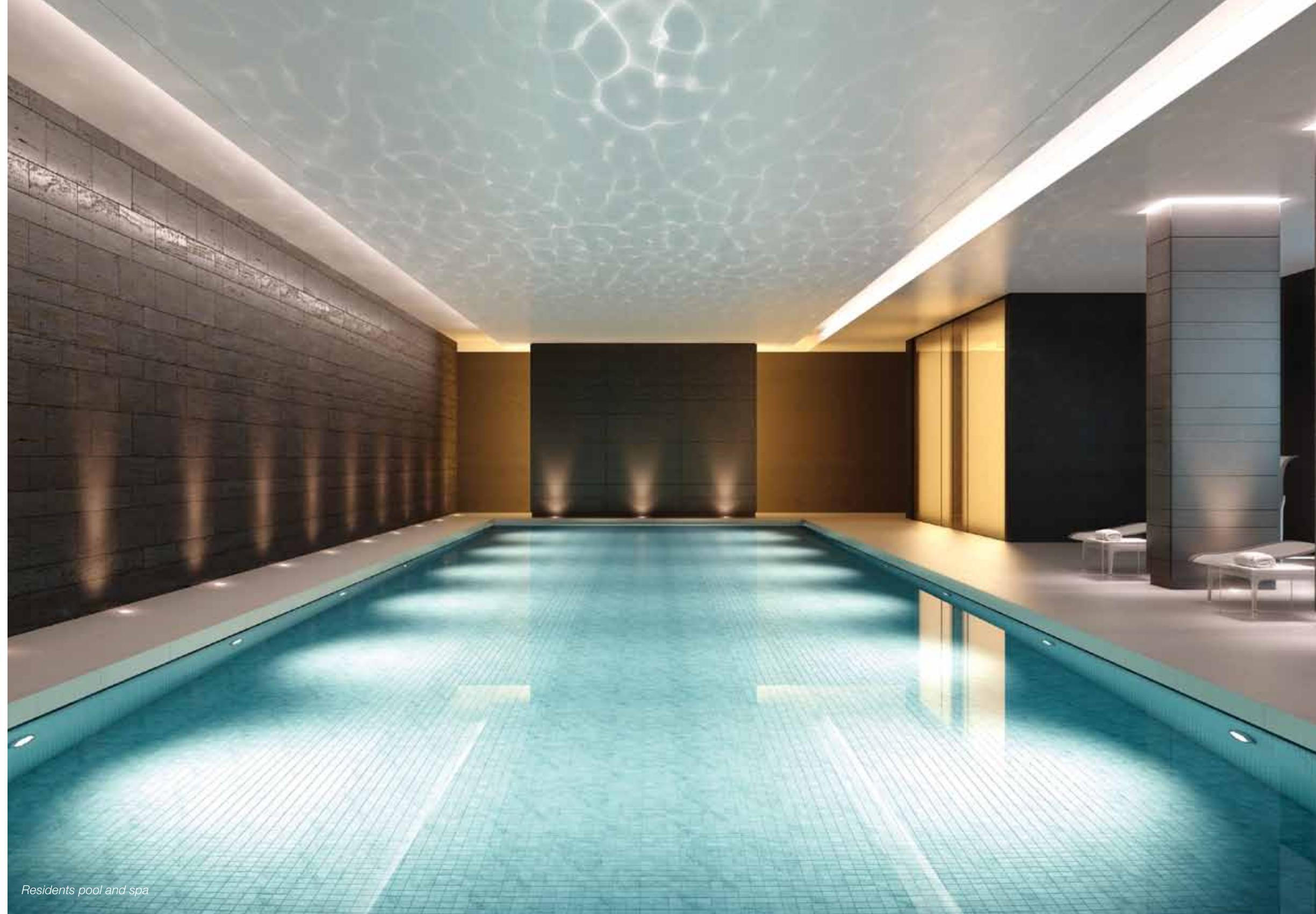
Beautifully balanced waterside contemporary living



4 *Facilities* FACILITIES

Comfort and quality of life is at the heart of everything that Woodberry Park offers to its residents. This has been achieved by combining sustainable building practices with a careful consideration of improved public open areas and luxury private residents facilities. Waters Edge will offer:

- Residents only pool
- Gym and spa exclusively for residents' use
- 24-hour concierge for peace of mind
- Secure underground parking
- Landscaped communal gardens
- Supermarket



Residents pool and spa



Residents only gym

5 *Deluxe specification*

DELUXE SPECIFICATION

Interior Finishes

- Wood laminate flooring to living areas and hallway
- Fumed oak front entrance door with multipoint locking system and spy hole
- Stained or fumed internal doors
- Skirting painted in matt eggshell to match walls
- Smooth painted ceilings
- Internal timber staircases with glass balustrade and timber handrails where applicable
- Sliding doors onto terraces and balconies
- Stainless steel door furniture throughout

Kitchen – Studios

- Reconstituted stone worktops
- Wood laminate panelling and splashback with feature shelving
- Individually designed contemporary handleless kitchen
- Under cabinet feature lighting
- Bosch touch control induction hob and concealed extractor hood
- Bosch stainless steel combination microwave oven
- Bosch integrated slimline dishwasher
- Bosch integrated fridge freezer
- Wine cooler
- Single bowl undermounted sink
- Compartmental recycling bins

Kitchen – 1, 2 and 3 Bedroom Apartments

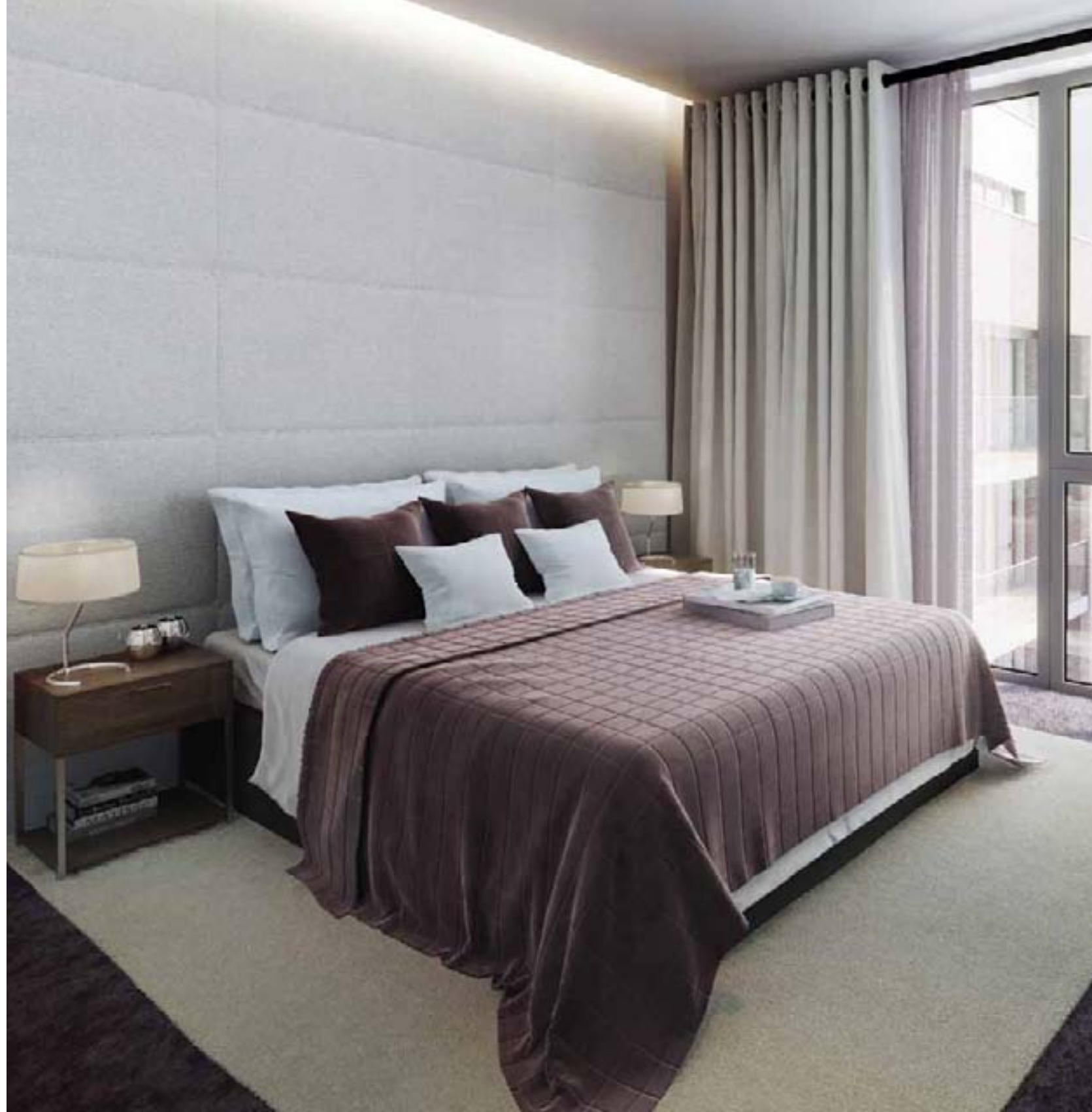
- Reconstituted stone worktops
- Wood laminate panelling and splashback with feature shelving
- Individually designed contemporary handleless kitchen
- Under cabinet feature lighting
- Bosch 4 ring touch control induction hob and concealed extractor hood
- Bosch stainless steel single oven
- Bosch stainless steel built in microwave oven
- Bosch integrated fridge freezer
- Bosch integrated dishwasher
- Wine cooler
- 1 ½ bowl undermounted sink
- Compartmental recycling bins

Bathrooms

- Large format porcelain floor and wall tiles
- Feature wall with a tile or mosaic finish
- Bespoke timber veneer panelling below vanity shelf
- Reconstituted stone vanity top with Vitra under counter hand basin and chrome mixer taps
- Vitra wall mounted white WC with soft close seat and concealed dual flush
- Mirrored storage cupboard with LED external feature lighting with internal shelves and shaver socket
- Kaldewei steel bath with timber bath panel and chrome wall mounted thermostatic bath/shower mixer
- Adjustable wall mounted chrome shower head over bath
- Majestic clear glass bath screen
- Polished stainless steel heated towel rail
- Chrome robe hooks, towel rail, toilet roll holder and toilet brush holder

Shower Rooms/En-suites

- Large format porcelain floor and wall tiles
- Feature wall with a tile or mosaic finish
- Bespoke timber veneer panelling below vanity shelf
- Reconstituted stone vanity top with Vitra wall mounted hand basin with chrome wall mounted taps
- Vitra wall mounted white WC with soft close seat and concealed dual flush
- Mirrored storage cupboard with LED external feature lighting with internal shelves and shaver socket
- Walk-in shower with frameless Majestic fixed clear glass screen
- Adjustable thermostatic wall mounted chrome shower
- Stainless steel heated towel rail
- Chrome robe hooks, towel rail, toilet roll holder and toilet brush holder



Bedrooms

- Fitted carpets
- Fitted wardrobes with lacquered doors and internal timber veneer shelf to master bedroom and bedroom 2 in 3 bed apartments
- Pocket doors to en-suites where applicable

Electrical Fittings/Plumbing

- Energy efficient LED downlights
- Feature under cabinet lighting to wall units in kitchen
- Master light switch to hallway
- Chrome socket outlets at worktop height in kitchen
- White isolator grid switch to kitchen
- White switches and sockets to all other locations
- Washer/dryer installed to hall cupboard
- Automatic lighting to storage cupboards
- Shaver sockets to bathrooms/shower rooms

Heating

- Centrally provided heating and hot water, individually metered to each apartment
- Underfloor heating with individual thermostatic temperature controls
- Stainless steel heated towel rail with individual control to bathrooms/shower rooms

Security & Peace of Mind

- Access to apartments via audio door entry system and electronic access to internal areas
- Mains powered smoke detectors with battery back up
- Recorded CCTV coverage of site entrance and car park areas
- 24 hour concierge
- Multi point locking front entrance door
- 10 year Premier Warranty Guarantee

Telecommunications

- Wired for Sky Plus, Multi-room and High Definition television with points to living room and all bedrooms (subject to future connection by purchaser)
- Broadband capability to all telephone points which are provided to living room and all bedrooms (subject to future connection by purchaser)

External Finishes

- Where applicable balconies finished in glass with stainless steel handrails
- Paved terraces/private gardens to selected apartments

Common Areas

- Tiling to entrance hallways
- Hallways and staircases to all floors carpeted throughout
- Lift access to all floors
- Refuse store provided
- Post boxes to lobby areas
- Painted corridor walls

Underground Car Parking

- Access to gated car park via electronic entry system
- Limited car parking spaces available by separate negotiation on selected plots on a right to park permit
- Secure bicycle storage available
- Electric car charging points

6 *Lava finish* LAVA FINISH

General

- Dark walnut laminate flooring to living areas and hallway
- Dark taupe carpet to all bedrooms
- Off white walls throughout
- Oak veneered doors stained to match floor throughout

Kitchen

- Kitchen cabinets in white gloss laminate with glass edged effect
- Polished gris expo grey quartz worktop
- Walnut tobacco laminate wall panelling, splash back and shelves

Shower Room

- Matt finish charcoal porcelain tiles to walls and floor
- Matching feature ribbed tile, with polished finish to shower wall and niche above vanity unit
- Non-slip matching tiles to walk in shower
- Polished black quartz shelf

Bathroom

- Matt finish charcoal porcelain tiles to walls and floor
- Matching feature ribbed tile, with polished finish to shower wall and wall behind vanity unit
- Walnut laminate bath panel and under counter vanity unit
- Polished black quartz vanity unit top





7 *Heather finish* HEATHER FINISH

General

- Rustic oak laminate flooring to living areas and hallway
- Dark aubergine carpet to all bedrooms
- Off white walls throughout
- Oak veneered doors stained to match floor throughout

Kitchen

- Wall cabinets in graphite matt lacquer, other cabinets in white matt lacquer
- Sterling grey quartz worktop
- Acacia laminate wall panelling, splash back and shelves

Shower Room

- Matt finish, stone effect, porcelain beige tiles to floor and walls
- Matching porcelain mosaic to walk-in shower
- Feature plum glass mosaic to wall behind vanity unit
- Natural taupe colour quartz shelf

Bathroom

- Matt finish porcelain beige tiles to floor and walls
- Oak laminate vanity unit and bath panel to match flooring
- Feature plum glass mosaic to niche above vanity unit
- Natural taupe colour quartz vanity top

8 *Smoke finish* SMOKE FINISH

General

- White washed rustic oak laminate flooring to living areas and hallway
- Pastel grey carpet to all bedrooms
- Off white walls throughout
- Oak veneered doors stained to match floor throughout

Kitchen

- Kitchen cabinets in stone grey gloss lacquer
- Polished black quartz worktop
- Acacia laminate wall panelling, splash back and shelves

Shower room

- Matt finish, stone effect, pale grey porcelain tiles to floor and walls
- Matching porcelain mosaic to walk-in shower
- Feature charcoal/blue glass mosaic to niche above vanity unit
- Polished white quartz shelf

Bathroom

- Matt finish, stone effect, pale grey porcelain tiles to floor and walls
- White washed oak laminate vanity unit and bath panel to match flooring
- Feature charcoal/blue glass mosaic to wall behind vanity unit
- Polished white quartz vanity top





9 *Shell finish* SHELL FINISH

General

- Oak laminate flooring to living areas and hallway
- Light taupe wool carpet to all bedrooms
- Off white walls throughout
- Oak veneered doors stained to match floor throughout

Kitchen

- Kitchen cabinets in white gloss laminate with glass edged effect
- Polished Blanco norte quartz worktop
- Wild oak laminate wall panelling, splash back and shelves

Shower Room

- Matt finish limestone coloured porcelain tiles to walls and floor
- Matching feature ribbed tile, with polished finish to shower wall and niche above vanity unit
- Non-slip matching tiles to walk in shower
- Polished black quartz shelf

Bathroom

- Matt finish limestone coloured porcelain tiles to walls and floor
- Matching feature ribbed tile, with polished finish to shower wall and wall behind vanity unit
- Black American walnut laminate vanity unit and bath panel
- Polished black quartz vanity unit top

10 *Premium specification*

PREMIUM SPECIFICATION

Interior Finishes

- Wood engineered flooring to living areas and hallway
- Fumed oak front entrance door with multipoint locking system and spy hole
- Stained or fumed internal doors
- Skirting painted in matt eggshell to match walls
- Smooth painted ceilings
- Internal timber staircases with glass balustrade and timber handrails where applicable
- Sliding doors onto terraces and balconies
- Stainless steel door furniture throughout

Kitchen

- Reconstituted stone worktops
- Wood laminate panelling and splashback with feature shelving
- Individually designed contemporary handleless kitchen
- Under cabinet feature lighting
- Bosch 4 ring touch control induction hob and concealed extractor hood
- Bosch stainless steel single oven
- Bosch stainless steel integrated combination microwave oven
- Bosch integrated fridge freezer
- Bosch integrated dishwasher
- Bosch stainless steel integrated coffee machine
- Wine cooler
- 1 ½ bowl undermounted sink
- Compartmental recycling bins under sink



Bedrooms

- Fitted carpets
- Fitted wardrobes with lacquered doors and internal timber veneer shelf to master bedroom and bedroom 2 in 3 bed apartments
- Pocket doors to en-suites where applicable
- Walk-in dressing areas where applicable
- Fitted wardrobes to master and 2nd bedroom

Electrical Fittings/Plumbing

- Energy efficient LED downlights with feature coffer lighting to master bedrooms
- Feature under cabinet lighting to wall units in kitchen
- Master light switch to hallway
- Chrome socket outlets at worktop height in kitchen
- White isolator grid switch to kitchen
- White switches and sockets to all other locations
- Washer/dryer installed to hall cupboard
- Automatic lighting to storage cupboards
- Shaver sockets to bathrooms/shower rooms

Sound

- Sonus Sound system to lounge and master bedroom

Heating

- Centrally provided heating and hot water, individually metered to each apartment
- Underfloor heating with individual thermostatic temperature controls
- Stainless steel heated towel rail with individual control to bathrooms/shower rooms

Security & Peace of Mind

- Access to apartments via audio door entry system and electronic access to internal areas
- Mains powered smoke detectors with battery back up
- Recorded CCTV coverage of site entrance and car park areas
- 24 hour concierge
- Multi point locking front entrance door
- 10 year Premier Warranty Guarantee

Telecommunications

- Wired for Sky Plus, Multi-room and High Definition television with points to living room and all bedrooms (subject to future connection by purchaser)
- Broadband capability to all telephone points which are provided to living room and all bedrooms (subject to future connection by purchaser)

External Finishes

- Where applicable balconies finished in glass and aluminium with stainless steel handrails
- Paved terraces/private gardens to selected apartments

Common Areas

- Tiling to entrance hallways
- Hallways and staircases to all floors carpeted throughout
- Lift access to all floors
- Refuse store provided
- Post boxes to lobby areas
- Painted corridor walls

Underground Car Parking

- Access to gated car park via electronic entry system
- Limited car parking spaces available by separate negotiation on selected plots on a right to park permit
- Secure bicycle storage available
- Electric car charging points



11

CLAY FINISH

Clay finish

General

- Fumed oak effect engineered flooring to living areas and hallway
- Dark taupe carpet to bedrooms
- Off white walls throughout
- Oak veneered doors stained to match floor throughout

Kitchen

- White matt lacquer glass effect edged units
- Oxide grey ceramic worktop and splashback

Shower room

- Slate grey large format porcelain tiles with stone effect patterning
- Natural stone tumbled mosaic, in the walk-in shower and around cabinet
- Gravel grey quartz shelf

Bathroom

- Slate grey large format porcelain tiles with stone effect patterning
- Fumed effect oak veneer vanity unit and bath panel to match floors
- Natural stone tumbled mosaic to wall behind vanity
- Gravel grey quartz vanity top

12 *Sand finish* SAND FINISH

General

- White washed oak engineered flooring to living areas and hallway
- Pale taupe carpet to all bedrooms
- Off white walls throughout
- Oak veneered doors stained to match floor throughout

Kitchen

- White matt lacquer cabinets
- Sandstone coloured ceramic worktop and splash back

Shower room

- Pale grey large format porcelain tiles with stone effect patterning
- Natural stone tumbled mosaic, in the walk-in shower and around cabinet
- Matt white lacquer and white washed oak joinery
- Polished concrete grey quartz shelf

Bathroom

- Pale grey large format porcelain tiles with stone effect patterning
- White washed oak veneer vanity unit and bath panel to match floors
- Natural stone tumbled mosaic to wall behind vanity
- Polished concrete grey quartz vanity top



13 floorplans

CORE A | GROUND FLOOR

AG.01 / STUDIO	44.47 sqm	479 sq ft
Apartment area	37.90 sqm	408 sq ft
External area	6.57 sqm	71 sq ft
Living area	5.28m x 3.20m	17'4" x 10'6"
Kitchen	2.74m x 1.88m	9'0" x 6'2"
Terrace (E-SE)	1.52m x 4.32m	5'0" x 14'2"

AG.02 / STUDIO	46.21 sqm	498 sq ft
Apartment area	39.80 sqm	429 sq ft
External area	6.41 sqm	69 sq ft
Living area	5.79m x 3.20m	19' 0" x 10' 6"
Kitchen	2.74m x 1.88m	9' 0" x 6' 2"
Terrace (SE)	1.52m x 4.22m	5' 0" x 13' 10"

AG.03 / 2 BED	98.58 sqm	1062 sq ft
Apartment area	81.00 sqm	872 sq ft
External area	17.58 sqm	190 sq ft
Living area	5.18m x 4.52m	17'0" x 14'10"
Kitchen	3.45m x 1.96m	11'4" x 6'5"
Bedroom 1	3.23m x 3.43m	10'7" x 11'3"
Bedroom 2	3.68m x 3.38m	12'01" x 11'1"
Terrace (SE)	1.47m x 11.96m	4'10" x 39'3"

AG.04 / 2 BED	94.25 sqm	1015 sq ft
Apartment area	77.50 sqm	834 sq ft
External area	16.75 sqm	181 sq ft
Kitchen/Living/Dining	5.69m x 5.72m	18'8" x 18'9"
Bedroom 1	3.15m x 3.12m	10'4" x 10'3"
Bedroom 2	4.27m x 2.79m	14'0" x 9'2"
Terrace (S-SW)	1.52m x 11.02m	5'0" x 36'2"

AG.05 / 1 BED	53.84 sqm	580 sq ft
Apartment area	50.00 sqm	538 sq ft
External area	3.84 sqm	42 sq ft
Living area	4.57m x 3.71m	15'0" x 12'2"
Kitchen/Dining	2.62m x 2.64m	8'7" x 8'8"
Terrace (W)	1.19m x 3.23m	3'11" x 10'7"

AG.06 / 1 BED	53.84 sqm	580 sq ft
Apartment area	50.00 sqm	538 sq ft
External area	3.84 sqm	42 sq ft
Living area	4.57m x 3.71m	15'0" x 12'2"
Kitchen/Dining	2.62m x 2.64m	8'7" x 8'8"
Bedroom	4.09m x 3.05m	13'5" x 10'0"
Terrace (W)	1.19m x 3.23m	3'11" x 10'7"

AG.07 / 2 BED	83.66 sqm	901 sq ft
Apartment area	79.60 sqm	857 sq ft
External area	4.06 sqm	44 sq ft
Living area	6.17m x 3.23m	20'3" x 10'7"
Kitchen	2.92m x 1.96m	9'7" x 6'5"
Bedroom 1	3.78m x 3.00m	12'5" x 9'10"
Bedroom 2	3.30m x 3.23m	10'10" x 10'7"
Terrace (W)	1.24m x 3.28m	4'1" x 10'9"

AG.08 / STUDIO	50.78 sqm	547 sq ft
Apartment area	41.00 sqm	442 sq ft
External area	9.78 sqm	105 sq ft
Living area	6.25m x 2.97m	20'6" x 9'9"
Kitchen/Dining	2.74m x 2.13m	9'0" x 7'0"
Terrace (N)	1.37m x 7.14m	4'6" x 23'5"

AG.09 / 1 BED	60.99 sqm	657 sq ft
Apartment area	51.60 sqm	556 sq ft
External area	9.39 sqm	101 sq ft
Living area	5.87m x 3.20m	19'3" x 10'6"
Kitchen	3.25m x 1.93m	10'8" x 6'4"
Bedroom	3.89m x 3.20m	12'9" x 10'6"
Terrace (N)	1.37m x 6.86m	4'6" x 22'6"

AG.10 / 2 BED	95.13 sqm	1025 sq ft
Apartment area	79.50 sqm	856 sq ft
External area	15.63 sqm	169 sq ft
Living area	5.87m x 4.19m	19'3" x 13'9"
Kitchen	3.45m x 1.96m	11'4" x 6'5"
Bedroom 1	5.38m x 3.15m	17'8" x 10'4"
Bedroom 2	3.84m x 2.95m	12'7" x 9'8"
Terrace (S)	1.45m x 10.82m	4'9" x 35'6"

AG.11 / 1 BED	54.50 sqm	587 sq ft
Apartment area	46.70 sqm	503 sq ft
External area	7.80 sqm	84 sq ft
Living area	5.18m x 3.35m	17'0" x 11'0"
Kitchen	1.96m x 2.29m	6'5" x 7'6"
Bedroom	4.01m x 3.05m	13'2" x 10'0"
Terrace (S)	1.45m x 5.38m	4'9" x 17'8"



North



BG.01 / 1 BED	63.37 sqm	683 sq ft
Apartment area	54.50 sqm	587 sq ft
External area	8.87 sqm	96 sq ft
Living area	5.49m x 3.35m	18'0" x 11'0"
Kitchen	3.07m x 1.96m	10'1" x 6'5"
Bedroom 1	3.86m x 3.05m	12'8" x 10'0"
Terrace (N)	1.37m x 6.48m	4'6" x 21'3"

BG.02 / 2 BED	73.05 sqm	787 sq ft
Apartment area	68.40 sqm	737 sq ft
External area	4.65 sqm	50 sq ft
Living area	4.98m x 3.35m	16'4" x 11'0"
Kitchen	3.35m x 1.93m	11'0" x 6'4"
Bedroom 1	3.48m x 3.38m	11'5" x 11'1"
Bedroom 2	3.71m x 2.77m	12'2" x 9'1"
Terrace (E)	1.37m x 3.40m	4'6" x 11'2"

floorplans

CORE B | GROUND FLOOR

BG.03 / 3 BED	120.74 sqm	1300 sq ft
Apartment area	102.60 sqm	1104 sq ft
External area	18.14 sqm	196 sq ft
Living area	6.15m x 5.00m	20'2" x 16'5"
Kitchen	2.95m x 2.21m	9'8" x 7'3"
Bedroom 1	3.48m x 3.35m	11'5" x 11'0"
Bedroom 2	5.72m x 3.05m	18'9" x 10'0"
Bedroom 3	3.07m x 2.84m	10'1" x 9'4"
Terrace (E-SE)	1.52m x 11.94m	5'0" x 39'2"

BG.04 / 3 BED	118.27 sqm	1274 sq ft
Apartment area	101.60 sqm	1094 sq ft
External area	16.67 sqm	180 sq ft
Living area	5.89m x 4.83m	19'4" x 15'10"
Kitchen	3.45m x 1.96m	11'4" x 6'5"
Bedroom 1	4.32m x 3.10m	14'6" x 10'2"
Bedroom 2	3.73m x 2.87m	12'3" x 9'5"
Bedroom 3	3.73m x 2.79m	12'3" x 9'2"
Terrace (W-SW)	1.52m x 10.97m	5'0" x 36'0"

14

CORE A | FIRST FLOOR

A1.01 / 2 BED	73.32 sqm	789 sq ft
Apartment area	67.80 sqm	729 sq ft
External area	5.52 sqm	60 sq ft
Living area	5.11m x 3.23m	16'9" x 10'7"
Kitchen	2.95m x 1.96m	9'8" x 6'5"
Bedroom 1	3.18m x 2.95m	10'5" x 9'8"
Bedroom 2	3.84m x 3.05m	12'7" x 10'0"
Balcony (E-SE)	1.47m x 3.76m	4'10" x 12'4"

A1.02 / 3 BED	118.40 sqm	1275 sq ft
Apartment area	100.90 sqm	1086 sq ft
External area	17.50 sqm	189 sq ft
Living area	5.69m x 5.18m	18'8" x 17'0"
Kitchen	2.16m x 2.41m	7'1" x 7'11"
Bedroom 1	4.67m x 3.15m	15'4" x 10'2"
Bedroom 2	3.15m x 2.77m	10'4" x 9'1"
Bedroom 3	4.14m x 2.77m	13'7" x 9'1"
Balcony (SE-S)	1.47m x 11.91m	4'10" x 39'1"

A1.03 / 3 BED	116.00 sqm	1249 sq ft
Apartment area	99.50 sqm	1072 sq ft
External area	16.50 sqm	177 sq ft
Living area	5.89m x 5.38m	19'4" x 17'8"
Kitchen	3.45m x 1.96m	11'4" x 6'5"
Bedroom 1	5.33m x 3.05m	17'6" x 10'0"
Bedroom 2	3.61m x 2.90m	11'10" x 9'6"
Bedroom 3	3.61m x 2.90m	11'10" x 9'6"
Balcony (S-SW)	1.50m x 11.00m	4'11" x 36'1"

A1.04 / 1 BED	55.51 sqm	598 sq ft
Apartment area	49.80 sqm	536 sq ft
External area	5.71 sqm	62 sq ft
Living area	5.26m x 3.61m	17'3" x 11'10"
Kitchen	2.64m x 2.03m	8'8" x 6'8"
Bedroom	4.09m x 3.12m	13'5" x 10'3"
Balcony (W)	1.52m x 3.76m	5'0" x 12'4"

A1.05 / 2 BED	86.31 sqm	930 sq ft
Apartment area	80.60 sqm	868 sq ft
External area	5.71 sqm	62 sq ft
Living area	5.23m x 3.78m	17'2" x 12'5"
Kitchen	2.95m x 1.96m	9'8" x 6'5"
Bedroom 1	6.60m x 3.00m	21'8" x 9'10"
Bedroom 2	3.81m x 2.87m	12'6" x 9'5"
Balcony (W)	1.52m x 3.76m	5'0" x 12'4"

A1.06 / 2 BED	77.61 sqm	841 sq ft
Apartment area	71.90 sqm	779 sq ft
External area	5.71 sqm	62 sq ft
Living area	5.51m x 3.23m	18'1" x 10'7"
Kitchen	2.95m x 1.93m	9'8" x 6'4"
Bedroom 1	3.23m x 2.77m	10'7" x 9'1"
Bedroom 2	3.20m x 3.07m	10'6" x 10'1"
Balcony (W)	1.52m x 3.76m	5'0" x 12'4"

A1.07 / STUDIO	40.56 sqm	437 sq ft
Apartment area	36.50 sqm	393 sq ft
External area	4.06 sqm	44 sq ft
Living area	5.49m x 3.15m	18'0" x 10'2"
Kichen/Dining	3.28m x 2.74m	10'9" x 9'0"
Balcony (N)	1.24m x 3.28m	4'1" x 10'9"

A1.08 / 2 BED	74.71 sqm	804 sq ft
Apartment area	70.30 sqm	756 sq ft
External area	4.41 sqm	48 sq ft
Living area	4.98m x 3.18m	16'4" x 10'5"
Kitchen	2.95m x 1.96m	9'8" x 6'5"
Bedroom 1	3.18m x 3.07m	10'5" x 10'1"
Bedroom 2	3.56m x 3.05m	11'8" x 10'0"
Balcony (N)	1.24m x 3.56m	4'1" x 11'8"

A1.09 / 3 BED	107.84 sqm	1162 sq ft
Apartment area	98.90 sqm	1065 sq ft
External area	8.94 sqm	97 sq ft
Living area	5.66m x 3.76m	18'7" x 12'4"
Kitchen	3.76m x 1.75m	12'4" x 5'9"
Bedroom 1	3.53m x 3.00m	11'7" x 9'10"
Bedroom 2	3.40m x 3.25m	11'2" x 10'8"
Bedroom 3	3.81m x 3.18m	12'6" x 10'5"
Balcony (S)	1.24m x 7.21m	4'1" x 23'8"

A1.10 / 2 BED	77.38 sqm	834 sq ft
Apartment area	69.80 sqm	752 sq ft
External area	7.58 sqm	82 sq ft
Living area	5.13m x 3.45m	16'10" x 11'4"
Kitchen	2.31m x 1.93m	7'7" x 6'4"
Bedroom 1	5.28m x 3.15m	17'4" x 10'4"
Bedroom 2	3.40m x 3.05m	11'2" x 10'0"
Balcony (S)	1.45m x 5.23m	4'9" x 17'2"



B1.01 / 2 BED	88.99 sqm	958 sq ft
Apartment area	80.70 sqm	868 sq ft
External area	8.29 sqm	90 sq ft
Living area	5.97m x 3.61m	19'7" x 11'10"
Kitchen	2.62m x 2.74m	8'7" x 9'0"
Bedroom 1	5.56m x 3.05m	18'3" x 10'0"
Bedroom 2	4.06m x 2.77m	13'4" x 9'1"
Balcony (N)	1.24m x 2.59m	4'1" x 8'6"
Balcony (S)	1.52m x 5.46m	5'0" x 17'11"

B1.02 / 1 BED	53.64 sqm	578 sq ft
Apartment area	50.40 sqm	543 sq ft
External area	3.24 sqm	35 sq ft
Living area	4.98m x 3.28m	16'4" x 10'9"
Kitchen	2.21m x 1.96m	7'3" x 6'5"
Bedroom	3.76m x 3.05m	12'4" x 10'7"
Balcony (N)	1.24m x 2.62m	4'1" x 8'7"

14

CORE B | FIRST FLOOR

B1.03 / 2 BED	74.01 sqm	797 sq ft
Apartment area	68.30 sqm	735 sq ft
External area	5.71 sqm	62 sq ft
Living area	4.95m x 3.35m	16'3" x 11'0"
Kitchen	3.35m x 1.93m	11'0" x 6'4"
Bedroom 1	3.45m x 3.38m	11'4" x 11'1"
Bedroom 2	3.68m x 2.74m	12'1" x 9'0"
Balcony (E)	1.52m x 3.76m	5'0" x 12'4"

B1.04 / 1 BED	62.41 sqm	672 sq ft
Apartment area	56.70 sqm	610 sq ft
External area	5.71 sqm	62 sq ft
Living area	5.74m x 3.40m	18'10" x 11'2"
Kitchen	3.10m x 1.96m	10'2" x 6'5"
Bedroom	5.49m x 3.20m	18'0" x 10'6"
Balcony (E)	1.52mx 3.76m	5'0" x 12'4"

B1.05 / 3 BED	120.77 sqm	1301 sq ft
Apartment area	102.60 sqm	1105 sq ft
External area	18.17 sqm	196 sq ft
Living area	6.15m x 4.52m	20'2" x 14'10"
Kitchen	2.95m x 2.21m	9'8" x 7'3"
Bedroom 1	5.72m x 3.05m	18'9" x 10'0"
Bedroom 2	3.43m x 3.53m	11'3" x 11'7"
Bedroom 3	3.07m x 2.84m	10'1" x 9'4"
Balcony (SE-S)	1.52m x 11.96m	5'0" x 39'3"

B1.06 / 3 BED	117.87 sqm	1268 sq ft
Apartment area	101.30 sqm	1090 sq ft
External area	16.57 sqm	178 sq ft
Living area	5.94m x 4.83m	19'6" x 15'10"
Kitchen	3.45m x 1.96m	11'4" x 6'5"
Bedroom 1	4.32m x 3.07m	14'2" x 10'2"
Bedroom 2	3.73m x 2.79m	12'3" x 9'2"
Bedroom 3	3.12m x 2.87m	10'3" x 9'5"
Balcony (S-SW)	1.50m x 11.05m	4'11" x 36'3"

15 floorplans

CORE A | SECOND FLOOR

A2.01 / 2 BED	73.32 sqm	789 sq ft
Apartment area	67.80 sqm	729 sq ft
External area	5.52 sqm	60 sq ft
Living area	5.11m x 3.23m	16'9" x 10'7"
Kitchen	2.95m x 1.96m	9'8" x 6'5"
Bedroom 1	3.18m x 2.95m	10'5" x 9'8"
Bedroom 2	3.84m x 3.05m	12'7" x 10'0"
Balcony (E-SE)	1.47m x 3.76m	4'10" x 12'4"

A2.02 / 3 BED	118.40 sqm	1275 sq ft
Apartment area	100.90 sqm	1086 sq ft
External area	17.50 sqm	189 sq ft
Living area	5.69m x 5.18m	18'8" x 17'0"
Kitchen	2.16m x 2.41m	7'1" x 7'11"
Bedroom 1	4.67m x 3.15m	15'4" x 10'4"
Bedroom 2	3.15m x 2.77m	10'4" x 9'1"
Bedroom 3	4.14m x 2.77m	13'7" x 9'1"
Balcony (SE-S)	1.47m x 11.91m	4'10" x 39'1"

A2.03 / 3 BED	116.00 sqm	1246 sq ft
Apartment area	99.50 sqm	1072 sq ft
External area	16.50 sqm	174 sq ft
Living area	5.89m x 5.38m	19'4" x 17'8"
Kitchen	3.45m x 1.96m	11'4" x 6'5"
Bedroom 1	5.33m x 3.05m	17'6" x 10'0"
Bedroom 2	3.61m x 2.90m	11'10" x 9'6"
Bedroom 3	3.61m x 2.90m	11'10" x 9'6"
Balcony (S-SW)	1.50m x 11.00m	4'11" x 36'1"

A2.04 / 1 BED	55.51 sqm	598 sq ft
Apartment area	49.80 sqm	536 sq ft
External area	5.71 sqm	62 sq ft
Living area	5.26m x 3.61m	17'3" x 11'10"
Kitchen	2.64m x 2.03m	8'8" x 6'8"
Bedroom	4.09m x 3.12m	13'5" x 10'3"
Balcony (W)	1.52m x 3.76m	5'0" x 12'4"

A2.05 / 2 BED	86.31 sqm	930 sq ft
Apartment area	80.60 sqm	868 sq ft
External area	5.71 sqm	62 sq ft
Living area	5.23m x 3.78m	17'2" x 12'5"
Kitchen	2.95m x 1.96m	9'8" x 6'5"
Bedroom 1	6.60m x 3.05m	21'8" x 10'0"
Bedroom 2	3.81m x 2.87m	12'6" x 9'5"
Balcony (W)	1.52m x 3.76m	5'0" x 12'4"

A2.06 / 2 BED	77.61 sqm	836 sq ft
Apartment area	71.90 sqm	774 sq ft
External area	5.71 sqm	62 sq ft
Living area	5.51m x 3.23m	18'1" x 10'7"
Kitchen	2.95m x 1.93m	9'8" x 6'4"
Bedroom 1	3.23m x 2.77m	10'7" x 9'1"
Bedroom 2	3.20m x 3.07m	10'6" x 10'1"
Balcony (W)	1.52m x 3.76m	5'0" x 12'4"

A2.07 / STUDIO	40.56 sqm	437 sq ft
Apartment area	36.50 sqm	393 sq ft
External area	4.06 sqm	44 sq ft
Living area	5.49m x 3.10m	18'0" x 10'2"
Kitchen	3.28m x 2.74m	10'9" x 9'0"
Balcony (N)	1.24m x 3.28m	4'1" x 10'9"

A2.08 / 2 BED	74.71 sqm	804 sq ft
Apartment area	70.30 sqm	756 sq ft
External area	4.41 sqm	48 sq ft
Living area	4.98m x 3.18m	16'4" x 10'5"
Kitchen	2.95m x 1.96m	9'8" x 6'5"
Bedroom 1	3.18m x 3.07m	10'5" x 10'1"
Bedroom 2	3.56m x 3.05m	11'8" x 10'0"
Balcony (N)	1.24m x 3.56m	4'1" x 11'8"

A2.09 / 3 BED	107.84 sqm	1161 sq ft
Apartment area	98.90 sqm	1065 sq ft
External area	8.94 sqm	97 sq ft
Living area	3.76m x 1.75m	12'4" x 5'9"
Kitchen	5.66m x 3.76m	18'7" x 12'4"
Bedroom 1	3.53m x 3.05m	11'7" x 10'0"
Bedroom 2	3.40m x 3.25m	11'2" x 10'8"
Bedroom 3	3.81m x 3.18m	12'6" x 10'5"
Balcony (S)	1.24m x 7.21m	4'1" x 23'8"

A2.10 / 2 BED	79.93 sqm	861 sq ft
Apartment area	69.80 sqm	752 sq ft
External area	10.13 sqm	109 sq ft
Living area	5.13m x 3.45m	16'10" x 11'4"
Kitchen	2.31m x 1.93m	7'7" x 6'4"
Bedroom 1	5.28m x 3.15m	17'4" x 10'4"
Bedroom 2	3.40m x 3.05m	11'2" x 10'0"
Balcony (S)	1.45m x 6.99m	4'9" x 22'11"



floorplans

CORE B | SECOND FLOOR



B2.01 / 2 BED	88.99 sqm	958 sq ft
Apartment area	80.70 sqm	868 sq ft
External area	8.29 sqm	90 sq ft
Living area	5.97m x 3.61m	19'7" x 11'10"
Kitchen	2.62m x 2.74m	8'7" x 9'0"
Bedroom 1	5.56m x 3.05m	18'3" x 10'0"
Bedroom 2	4.06m x 2.77m	13'4" x 9'1"
Balcony (N)	1.24m x 2.59m	4'1" x 8'6"
Balcony (S)	1.52m x 5.46m	5'0" x 17'11"

B2.02 / 1 BED	53.64 sqm	578 sq ft
Apartment area	50.40 sqm	543 sq ft
External area	3.24 sqm	35 sq ft
Living area	4.98m x 3.28m	16'4" x 10'9"
Kitchen	2.21m x 1.96m	7'3" x 6'5"
Bedroom	3.76m x 3.05m	12'4" x 10'0"
Balcony (N)	1.24m x 2.62m	4'1" x 8'7"

B2.03 / 2 BED	74.01 sqm	797 sq ft
Apartment area	68.30 sqm	735 sq ft
External area	5.71 sqm	62 sq ft
Living area	4.95m x 3.35m	16'3" x 11'0"
Kitchen	3.35m x 1.93m	11'0" x 6'4"
Bedroom 1	3.45m x 3.38m	11'4" x 11'1"
Bedroom 2	3.68m x 2.74m	12'1" x 9'0"
Balcony (E)	1.52m x 3.76m	5'0" x 12'4"

B2.04 / 1 BED	62.41 sqm	672 sq ft
Apartment area	56.70 sqm	610 sq ft
External area	5.71 sqm	62 sq ft
Living area	5.74m x 3.40m	18'10" x 11'2"
Kitchen	3.10m x 1.96m	10'2" x 6'5"
Bedroom	5.49m x 3.20m	18'0" x 10'6"
Balcony (E)	1.52m x 3.76m	5'0" x 12'4"

B2.05 / 3 BED	120.77 sqm	1301 sq ft
Apartment area	102.60 sqm	1105 sq ft
External area	18.17 sqm	196 sq ft
Living area	6.15m x 4.52m	20'2" x 14'10"
Kitchen	2.95m x 2.21m	9'8" x 7'3"
Bedroom 1	5.72m x 3.05m	18'9" x 10'0"
Bedroom 2	3.43m x 3.53m	11'3" x 11'7"
Bedroom 3	3.07m x 2.84m	10'1" x 9'4"
Balcony (SE-S)	1.52m x 11.96m	5'0" x 39'3"

B2.06 / 3 BED	117.87 sqm	1268 sq ft
Apartment area	101.30 sqm	1090 sq ft
External area	16.57 sqm	178 sq ft
Living area	5.94m x 4.83m	19'6" x 15'10"
Kitchen	3.45m x 1.96m	11'4" x 6'5"
Bedroom 1	4.32m x 3.07m	14'2" x 10'1"
Bedroom 2	3.73m x 2.79m	12'3" x 9'2"
Bedroom 3	3.12m x 2.87m	10'3" x 9'5"
Balcony (S-SW)	1.50m x 11.05m	4'11" x 36'3"

16

floorplans
CORE A | THIRD FLOOR

A3.01 / 2 BED	73.32 sqm	790 sq ft
Apartment area	67.80 sqm	730 sq ft
External area	5.52 sqm	60 sq ft
Living area	5.11m x 3.23m	16'9" x 10'7"
Kitchen	2.95m x 1.96m	9'8" x 6'5"
Bedroom 1	3.18m x 2.95m	10'5" x 9'8"
Bedroom 2	3.84m x 3.05m	12'7" x 10'0"
Balcony (E-SE)	1.47m x 3.76m	4'10" x 12'4"

A3.02 / 3 BED	118.40 sqm	1275 sq ft
Apartment area	100.90 sqm	1086 sq ft
External area	17.50 sqm	189 sq ft
Living area	5.69m x 5.18m	18'8" x 17'0"
Kitchen	2.16m x 2.41m	7'1" x 7'11"
Bedroom 1	4.67m x 3.15m	15'4" x 10'4"
Bedroom 2	3.15m x 2.77m	10'4" x 9'1"
Bedroom 3	4.14m x 2.77m	13'7" x 9'1"
Balcony (SE-S)	1.47m x 11.91m	4'10" x 39'1"

A3.03 / 3 BED	116.00 sqm	1249 sq ft
Apartment area	99.50 sqm	1072 sq ft
External area	16.50 sqm	177 sq ft
Living area	5.89m x 5.38m	19'4" x 17'8"
Kitchen	3.45m x 1.96m	11'4" x 6'5"
Bedroom 1	5.33m x 3.05m	17'6" x 10'0"
Bedroom 2	3.61m x 2.90m	11'10" x 9'6"
Bedroom 3	3.61m x 2.90m	11'10" x 9'6"
Balcony (S-SW)	1.50m x 11.00m	4'11" x 36'1"

A3.04 / 1 BED	55.51 sqm	598 sq ft
Apartment area	49.80 sqm	536 sq ft
External area	5.71 sqm	62 sq ft
Living area	5.26m x 3.61m	17'3" x 11'10"
Kitchen	2.64m x 2.03m	8'8" x 6'8"
Bedroom	4.09m x 3.12m	13'5" x 10'3"
Balcony (W)	1.52m x 3.76m	5'0" x 12'4"

A3.05 / 2 BED	86.31 sqm	930 sq ft
Apartment area	80.60 sqm	868 sq ft
External area	5.71 sqm	62 sq ft
Living area	5.23m x 3.78m	17'2" x 12'5"
Kitchen	2.95m x 1.96m	9'8" x 6'5"
Bedroom 1	6.60m x 3.05m	21'8" x 10'0"
Bedroom 2	3.81m x 2.87m	12'6" x 9'5"
Balcony (W)	1.52m x 3.76m	5'0" x 12'4"

A3.06 / 2 BED	77.61 sqm	836 sq ft
Apartment area	71.90 sqm	774 sq ft
External area	5.71 sqm	62 sq ft
Living area	5.51m x 3.23m	18'1" x 10'7"
Kitchen	2.95m x 1.93m	9'8" x 6'4"
Bedroom 1	3.23m x 2.77m	10'7" x 9'1"
Bedroom 2	3.20m x 3.07m	10'6" x 10'1"
Balcony (W)	1.52m x 3.76m	5'0" x 12'4"

A3.07 / STUDIO	40.56 sqm	437 sq ft
Apartment area	36.50 sqm	393 sq ft
External area	4.06 sqm	44 sq ft
Living area	5.49m x 3.10m	18'0" x 10'2"
Kitchen	3.28m x 2.74m	10'9" x 9'0"
Balcony (N)	1.24m x 3.28m	4'1" x 10'9"

A3.08 / 2 BED	74.71 sqm	804 sq ft
Apartment area	70.30 sqm	756 sq ft
External area	4.41 sqm	48 sq ft
Living area	4.98m x 3.18m	16'4" x 10'5"
Kitchen	2.95m x 1.96m	9'8" x 6'5"
Bedroom 1	3.18m x 3.07m	10'5" x 10'1"
Bedroom 2	3.56m x 3.05m	11'8" x 10'0"
Balcony (N)	1.24m x 3.56m	4'1" x 11'8"

A3.09 / 3 BED	107.84 sqm	1162 sq ft
Apartment area	98.90 sqm	1065 sq ft
External area	8.94 sqm	97 sq ft
Living area	3.76m x 1.75m	12'4" x 5'9"
Kitchen	5.66m x 3.76m	18'7" x 12'4"
Bedroom 1	3.53m x 3.00m	11'7" x 9'10"
Bedroom 2	3.40m x 3.25m	11'2" x 10'0"
Bedroom 3	3.81m x 3.18m	12'6" x 10'5"
Balcony (S)	1.24m x 7.21m	4'1" x 23'8"

A3.10 / 2 BED	77.38 sqm	834 sq ft
Apartment area	69.80 sqm	752 sq ft
External area	7.58 sqm	82 sq ft
Living area	5.13m x 3.45m	16'10" x 11'4"
Kitchen	2.31m x 1.93m	7'7" x 6'4"
Bedroom 1	5.28m x 3.15m	17'4" x 10'4"
Bedroom 2	3.40m x 3.05m	11'2" x 10'0"
Balcony (S)	1.45m x 5.23m	4'9" x 17'2"



B3.01 / 2 BED	92.20 sqm	992 sq ft
Apartment area	80.70 sqm	868 sq ft
External area	11.50 sqm	124 sq ft
Living area	5.97m x 3.61m	19'7" x 11'10"
Kitchen	2.62m x 2.74m	8'7" x 9'0"
Bedroom 1	5.56m x 3.05m	18'3" x 10'0"
Bedroom 2	4.06m x 2.77m	13'4" x 9'1"
Balcony (N)	1.24m x 2.59m	4'1" x 8'6"
Balcony (S)	1.52m x 5.46m	5'0" x 17'11"

B3.02 / 1 BED	53.64 sqm	578 sq ft
Apartment area	50.40 sqm	543 sq ft
External area	3.24 sqm	35 sq ft
Living area	4.98m x 3.28m	16'4" x 10'9"
Kitchen	2.21m x 1.96m	7'3" x 6'5"
Bedroom	3.76m x 3.05m	12'4" x 10'0"
Balcony (N)	1.24m x 2.62m	4'1" x 8'7"

16

floorplans
CORE B | THIRD FLOOR

B3.03 / 2 BED	74.01 sqm	797 sq ft
Apartment area	68.30 sqm	735 sq ft
External area	5.71 sqm	62 sq ft
Living area	4.95m x 3.35m	16'3" x 11'0"
Kitchen	3.35m x 1.93m	11'0" x 6'4"
Bedroom 1	3.45m x 3.38m	11'4" x 11'1"
Bedroom 2	3.68m x 2.74m	12'1" x 9'0"
Balcony (E)	1.52m x 3.76m	5'0" x 12'4"

B3.04 / 1 BED	62.41 sqm	672 sq ft
Apartment area	56.70 sqm	610 sq ft
External area	5.71 sqm	62 sq ft
Living area	5.74m x 3.40m	18'10" x 11'2"
Kitchen	3.10m x 1.96m	10'2" x 6'5"
Bedroom	5.49m x 3.20m	18'0" x 10'6"
Balcony (E)	1.52m x 3.76m	5'0" x 12'4"

B3.05 / 3 BED	120.77 sqm	1301 sq ft
Apartment area	102.60 sqm	1105 sq ft
External area	18.17 sqm	196 sq ft
Living area	6.15m x 4.52m	20'2" x 14'10"
Kitchen	2.95m x 2.21m	9'8" x 7'3"
Bedroom 1	5.72m x 3.05m	18'9" x 10'0"
Bedroom 2	3.43m x 3.53m	11'3" x 11'7"
Bedroom 3	3.07m x 2.84m	10'1" x 9'4"
Balcony (SE-S)	1.52m x 11.96m	5'0" x 39'3"

B3.06 / 3 BED	117.87 sqm	1268 sq ft
Apartment area	101.30 sqm	1090 sq ft
External area	16.57 sqm	178 sq ft
Living area	5.94m x 4.83m	19'6" x 15'10"
Kitchen	3.45m x 1.96m	11'4" x 6'5"
Bedroom 1	4.32m x 3.07m	14'2" x 10'1"
Bedroom 2	3.73m x 2.79m	12'3" x 9'2"
Bedroom 3	3.12m x 2.87m	10'3" x 9'5"
Balcony (S-SW)	1.50m x 11.05m	4'11" x 36'3"

17 floorplans CORE A | FOURTH FLOOR

A4.01 / 2 BED	73.32 sqm	790 sq ft
Apartment area	67.80 sqm	730 sq ft
External area	5.52 sqm	60 sq ft
Living area	5.11m x 3.23m	16'9" x 10'7"
Kitchen	2.95m x 1.96m	9'8" x 6'5"
Bedroom 1	3.18m x 2.95m	10'5" x 9'8"
Bedroom 2	3.84m x 3.05m	12'7" x 10'0"
Balcony (E-SE)	1.47m x 3.76m	4'10" x 12'4"

A4.02 / 3 BED	118.40 sqm	1275 sq ft
Apartment area	100.90 sqm	1086 sq ft
External area	17.50 sqm	189 sq ft
Living area	5.69m x 5.18m	18'8" x 17'0"
Kitchen	2.16m x 2.41m	7'1" x 7'11"
Bedroom 1	4.67m x 3.15m	15'4" x 10'4"
Bedroom 2	3.15m x 2.77m	10'4" x 9'1"
Bedroom 3	4.14m x 2.77m	13'7" x 9'1"
Balcony (SE-S)	1.47m x 11.91m	4'10" x 39'1"

A4.03 / 3 BED	216.08 sqm	2317 sq ft
Apartment area	110.30 sqm	1187 sq ft
External area	105.78 sqm	1130 sq ft
Living area	5.36m x 4.04m	17'7" x 13'3"
Upper living area	4.57m x 3.51m	15'0" x 11'6"
Kitchen	3.45m x 1.96m	11'4" x 6'5"
Bedroom 1	5.33m x 3.05m	17'6" x 10'0"
Bedroom 2	3.61m x 2.90m	11'10" x 9'6"
Bedroom 3	3.61m x 2.90m	11'10" x 9'6"
Balcony (S-SW)	1.50m x 11.00m	4'11" x 36'1"
Roof Terrace (S-SW)	9.32m x 9.58m	30'7" x 31'5"

A4.04 / 1 BED	55.51 sqm	598 sq ft
Apartment area	49.80 sqm	536 sq ft
External area	5.71 sqm	62 sq ft
Living area	5.26m x 3.61m	17'3" x 11'10"
Kitchen	2.64m x 2.03m	8'8" x 6'8"
Bedroom	4.09m x 3.12m	13'5" x 10'3"
Balcony (W)	1.52m x 3.76m	5'0" x 12'4"

A4.05 / 2 BED	86.31 sqm	930 sq ft
Apartment area	80.60 sqm	868 sq ft
External area	5.71 sqm	62 sq ft
Living area	5.23m x 3.78m	17'2" x 12'5"
Kitchen	2.95m x 1.96m	9'8" x 6'5"
Bedroom 1	6.60m x 3.05m	21'8" x 10'0"
Bedroom 2	3.81m x 2.87m	12'6" x 9'5"
Balcony (W)	1.52m x 3.76m	5'0" x 12'4"

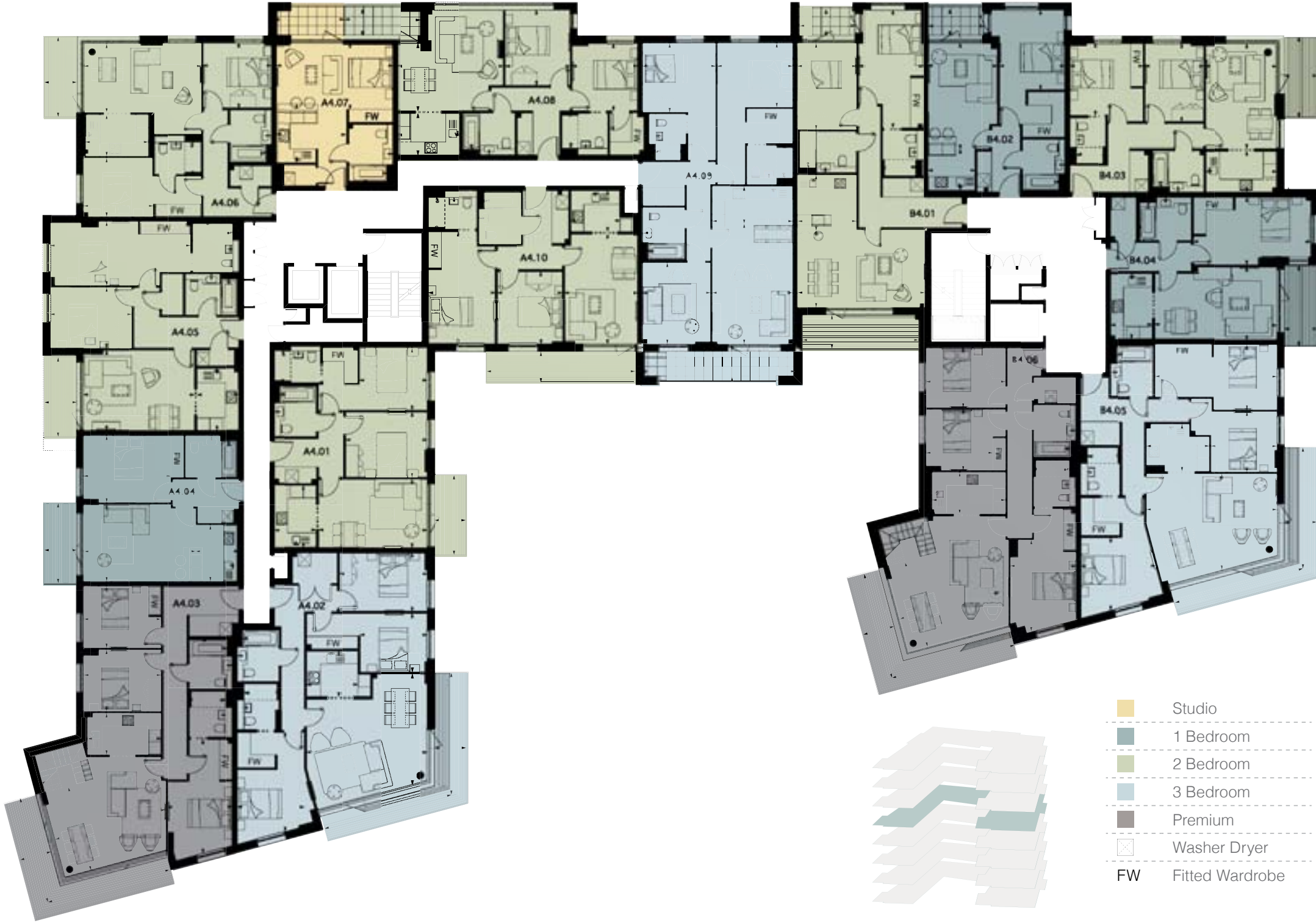
A4.06 / 2 BED	77.61 sqm	836 sq ft
Apartment area	71.90 sqm	774 sq ft
External area	5.71 sqm	62 sq ft
Living area	5.51m x 3.23m	18'1" x 10'7"
Kitchen	2.95m x 1.93m	9'8" x 6'4"
Bedroom 1	3.23m x 2.77m	10'7" x 9'1"
Bedroom 2	3.20m x 3.07m	10'6" x 10'1"
Balcony (W)	1.52m x 3.76m	5'0" x 12'4"

A4.07 / STUDIO	40.56 sqm	437 sq ft
Apartment area	36.50 sqm	393 sq ft
External area	4.06 sqm	44 sq ft
Living area	5.49m x 3.10m	18'0" x 10'2"
Kitchen	3.28m x 2.74m	10'9" x 9'0"
Balcony (N)	1.24m x 3.28m	4'1" x 10'9"

A4.08 / 2 BED	74.71 sqm	804 sq ft
Apartment area	70.30 sqm	756 sq ft
External area	4.41 sqm	48 sq ft
Living area	4.98m x 3.18m	16'4" x 10'5"
Kitchen	2.95m x 1.96m	9'8" x 6'5"
Bedroom 1	3.18m x 3.07m	10'5" x 10'1"
Bedroom 2	3.56m x 3.05m	11'8" x 10'0"
Balcony (N)	1.24m x 3.56m	4'1" x 11'8"

A4.09 / 3 BED	107.84 sqm	1162 sq ft
Apartment area	98.90 sqm	1065 sq ft
External area	8.94 sqm	97 sq ft
Living area	3.76m x 1.75m	12'4" x 5'9"
Kitchen	5.66m x 3.76m	18'7" x 12'4"
Bedroom 1	3.53m x 3.00m	11'7" x 9'10"
Bedroom 2	3.40m x 3.25m	11'2" x 10'8"
Bedroom 3	3.81m x 3.18m	12'6" x 10'5"
Balcony (S)	1.24m x 7.21m	4'1" x 23'8"

A4.10 / 2 BED	77.38 sqm	834 sq ft
Apartment area	69.80 sqm	752 sq ft
External area	7.58 sqm	82 sq ft
Living area	5.13m x 3.45m	16'10" x 11'4"
Kitchen	2.31m x 1.93m	7'7" x 6'4"
Bedroom 1	5.28m x 3.15m	17'4" x 10'4"
Bedroom 2	3.40m x 3.05m	11'2" x 10'0"
Balcony (S)	1.45m x 5.23m	4'9" x 17'2"



North



B4.01 / 2 BED	92.20 sqm	992 sq ft
Apartment area	80.70 sqm	868 sq ft
External area	11.50 sqm	124 sq ft
Living area	5.97m x 3.61m	19'7" x 11'10"
Kitchen	2.62 x 2.74m	8'7" x 9'0"
Bedroom 1	5.56m x 3.05m	18'3" x 10'0"
Bedroom 2	4.06m x 2.77m	13'4" x 9'1"
Balcony (N)	1.24m x 2.59m	4'1" x 8'6"
Balcony (S)	1.52m x 5.46m	5'0" x 17'11"

B4.02 / 1 BED	53.64 sqm	578 sq ft
Apartment area	50.40 sqm	543 sq ft
External area	3.24 sqm	35 sq ft
Living area	4.98m x 3.28m	16'4" x 10'9"
Kitchen	2.21m x 1.96m	7'3" x 6'5"
Bedroom	3.76m x 3.05m	12'4" x 10'0"
Balcony (N)	1.24m x 2.62m	4'1" x 8'7"

floorplans CORE B | FOURTH FLOOR

B4.03 / 2 BED	74.01 sqm	797 sq ft
Apartment area	68.30 sqm	735 sq ft
External area	5.71 sqm	62 sq ft
Living area	4.95m x 3.35m	16'3" x 11'0"
Kitchen	3.35m x 1.93m	11'0" x 6'4"
Bedroom 1	3.45m x 3.38m	11'4" x 11'1"
Bedroom 2	3.68m x 2.74m	12'1" x 9'0"
Balcony (E)	1.52m x 3.76m	5'0" x 12'4"

B4.04 / 1 BED	62.40 sqm	672 sq ft
Apartment area	56.70 sqm	610 sq ft
External area	5.71 sqm	62 sq ft
Living area	5.74m x 3.40m	18'10" x 11'2"
Kitchen	3.10m x 1.96m	10'2" x 6'5"
Bedroom	5.49m x 3.20m	18'0" x 10'6"
Balcony (E)	1.52m x 3.76m	5'0" x 12'4"

B4.05 / 3 BED	120.77 sqm	1301 sq ft
Apartment area	102.60 sqm	1105 sq ft
External area	18.17 sqm	196 sq ft
Living area	6.15m x 4.52m	20'2" x 14'10"
Kitchen	2.95m x 2.21m	9'8" x 7'3"
Bedroom 1	5.72m x 3.05m	18'9" x 10'0"
Bedroom 2	3.43m x 3.53m	11'3" x 11'7"
Bedroom 3	3.07m x 2.84m	10'1" x 9'4"
Balcony (SE-S)	1.52m x 11.96m	5'0" x 39'3"

B4.06 / 3 BED	189.66 sqm	2041 sq ft
Apartment area	112.00 sqm	1206 sq ft
External area	77.66 sqm	835 sq ft
Living area	4.83m x 4.11m	15'10" x 13'6"
Upper living area	4.57m x 3.51m	15'0" x 11'6"
Kitchen	3.45m x 1.96m	11'4" x 6'5"
Bedroom 1	4.32m x 3.10m	14'2" x 10'2"
Bedroom 2	3.73m x 2.79m	12'3" x 9'2"
Bedroom 3	3.12m x 2.87m	10'3" x 9'5"
Balcony (S-SW)	1.50m x 11.05m	4'11" x 36'3"
Roof Terrace (S-SW)	7.29m x 8.38m	23'11" x 27'6"

18 floorplans
CORE A | FIFTH FLOOR

A5.01 / 3 BED	223.52 sqm	2293 sq ft
Apartment area	117.20 sqm	1262 sq ft
External area	106.32 sqm	1031 sq ft
Living/Kitchen/Dining	7.21m x 6.50m	23'8" x 21'4"
Bedroom 1	5.84m x 3.00m	19'2" x 9'10"
Bedroom 2	4.78m x 3.00m	15'8" x 9'10"
Bedroom 3	3.10m x 2.79m	10'2" x 9'2"
Balcony (W)	1.52m x 3.76m	5'0" x 12'4"
Roof Terrace (S)	8.38m x 10.76m	27'6" x 35'3"

A5.02 / 2 BED	130.32 sqm	1403 sq ft
Apartment area	64.30 sqm	692 sq ft
External area	66.02 sqm	711 sq ft
Living area	5.23m x 3.20m	17'2" x 10'6"
Kitchen	2.95m x 1.96m	9'8" x 6'5"
Bedroom 1	3.51m x 3.12m	11'6" x 10'3"
Bedroom 2	3.76m x 2.77m	12'4" x 9'1"
Balcony (N)	1.04m x 6.83m	3'5" x 22'5"
Roof Terrace (S)	6.17m x 9.55m	20'3" x 31'4"

A5.03 / 1 BED	58.54 sqm	630 sq ft
Apartment area	51.70 sqm	556 sq ft
External area	6.84 sqm	74 sq ft
Living area	3.20m x 5.87m	10'6" x 19'3"
Kitchen	3.25m x 1.93m	10'8" x 6'4"
Bedroom	3.20m x 3.30m	10'6" x 10'10"
Balcony (N)	1.04m x 6.58m	3'5" x 21'7"

A5.04 / 3 BED	204.72 sqm	2203 sq ft
Apartment area	147.50 sqm	1588sq ft
External area	57.22 sqm	615 sq ft
Kitchen/Dinning	4.57m x 3.51m	15'0" x 11'6"
Upper living area	6.78m x 7.06m	22'3" x 23'2"
Upper kitchen	2.31m x 2.03m	7'7" x 6'8"
Bedroom 1	3.10m x 3.51m	10'2" x 11'6"
Bedroom 2	3.05m x 3.45m	10'0" x 11'4"
Bedroom 3	3.07m x 3.45m	10'1" x 11'4"
Balcony (S)	1.02m x 6.65m	3'4" x 21'10"
Roof Terrace (S)	7.29m x 3.56m	23'11" x 11'8"
Roof Terrace (N)	7.98m x 3.07m	26'2" x 10'1"

A5.05 / 2 BED	148.88 sqm	1601 sq ft
Apartment area	70.00 sqm	753 sq ft
External area	78.88 sqm	848 sq ft
Living area	5.16m x 3.53m	16'11" x 11'7"
Kitchen	2.95m x 1.96m	9'8" x 6'5"
Bedroom 1	4.90m x 3.10m	16'1" x 10'2"
Bedroom 2	3.40m x 3.05m	11'2" x 10'0"
Balcony (S)	1.45m x 7.70m	4'9" x 25'3"
Roof Terrace (S)	5.72m x 11.84m	18'9" x 38'10"



North



B5.01 / 2 BED	119.50 sqm	1287 sq ft
Apartment area	79.20 sqm	853 sq ft
External area	40.30 sqm	434 sq ft
Living area	3.73m x 5.97m	12'3" x 19'7"
Kitchen	2.74m x 2.44m	9'0" x 8'0"
Bedroom 1	5.56m x 2.97m	18'3" x 9'9"
Bedroom 2	4.06m x 2.74m	13'4" x 9'0"
Balcony (N)	1.30m x 2.59m	4'3" x 8'6"
Balcony (S)	1.52m x 5.46m	5'0" x 17'11"
Roof Terrace (S)	5.08m x 5.64m	16'8" x 18'6"

B5.02 / 2 BED	75.70 sqm	815 sq ft
Apartment area	72.30 sqm	779 sq ft
External area	3.40 sqm	36 sq ft
Living area	4.93m x 3.23m	16'2" x 10'7"
Kitchen	2.95m x 1.96m	9'8" x 6'5"
Bedroom 1	3.00m x 3.05m	9'10" x 10'0"
Bedroom 2	5.23m x 3.12m	17'2" x 10'3"
Balcony (N)	1.30m x 2.62m	4'3" x 8'7"

B5.03 / 3 BED	196.19 sqm	2112 sq ft
Apartment area	130.50 sqm	1405 sq ft
External area	65.69 sqm	707 sq ft
Living/Kitchen/Dining	8.81m x 6.78m	28'11" x 22'3"
Bedroom 1	3.05m x 3.05m	10'0" x 10'0"
Bedroom 2	4.34m x 3.56m	14'3" x 11'8"
Bedroom 3	3.05m x 3.51m	10'0" x 11'6"
Roof Terrace (S)	8.89m x 7.39m	29'2" x 24'3"

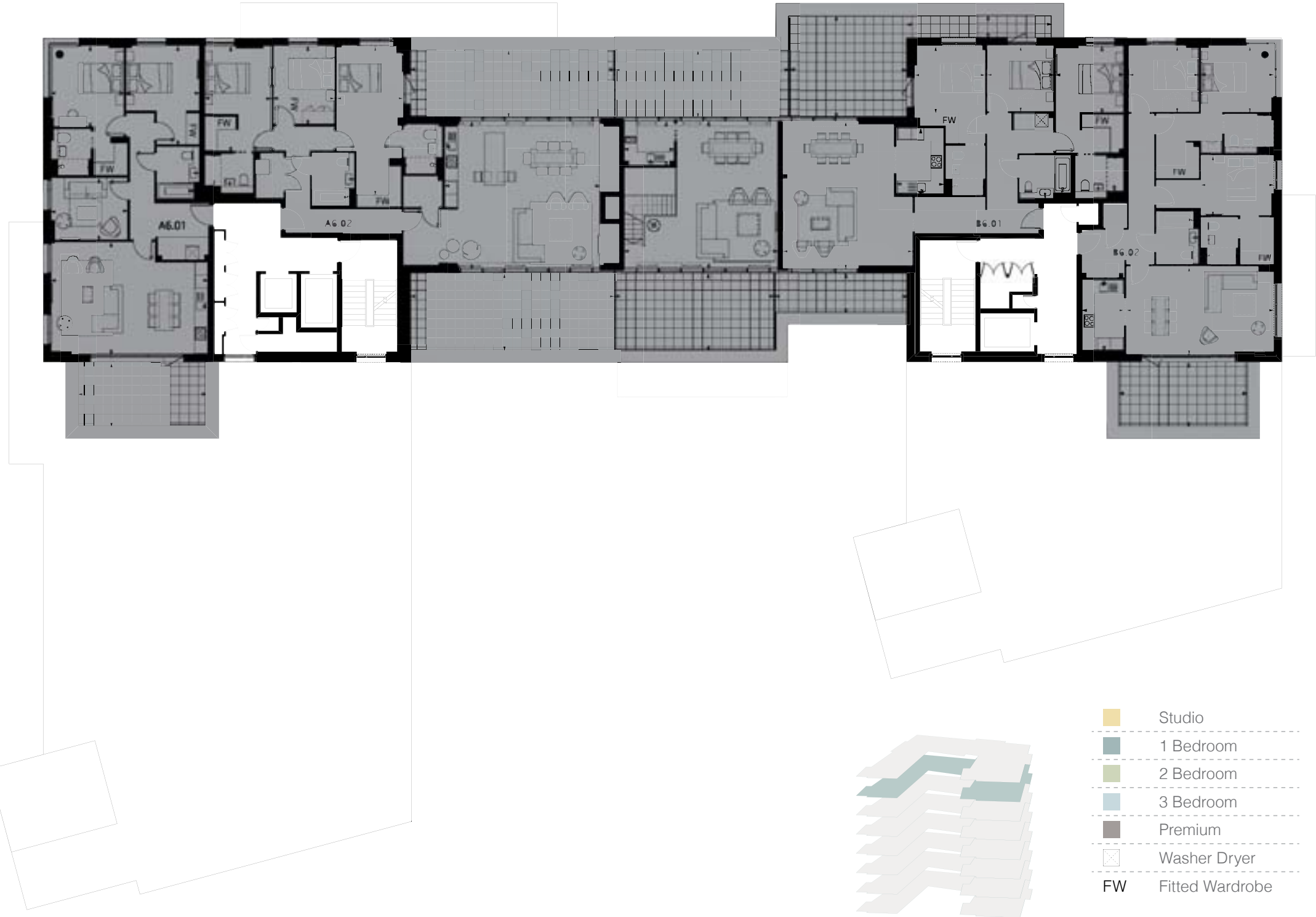
floorplans
CORE B | FIFTH FLOOR

19

floorplans
CORE A | SIXTH FLOOR

A6.01 / 3 BED	116.36 sqm	1253 sq ft
Apartment area	98.90 sqm	1065 sq ft
External area	17.46 sqm	188 sq ft
Living/Kitchen/Dining	7.19m x 5.18m	23'8" x 17'0"
Bedroom 1	3.73m x 3.35m	12'3" x 11'0"
Bedroom 2	4.57m x 3.35m	15'0" x 11'0"
Bedroom 3	2.82m x 3.53m	9'3" x 11'7"
Balcony (S)	2.95m x 5.92m	9'8" x 19'5"

A6.02 / 3 BED	198.58 sqm	2137 sq ft
Apartment area	136.60 sqm	1470 sq ft
External area	61.98 sqm	667 sq ft
Living/Kitchen/Dining	6.76m x 7.14m	22'2" x 23'5"
Bedroom 1	4.83m x 3.05m	15'10" x 10'0"
Bedroom 2	3.61m x 2.82m	11'10" x 9'3"
Bedroom 3	6.83m x 3.05m	22'5" x 10'0"
Roof Terrace (S)	3.56m x 9.35m	11'8" x 30'8"
Roof Terrace (N)	3.07m x 9.35m	10'1" x 30'08"



North



B6.01 / 3 BED	159.19 sqm	1713 sq ft
Apartment area	116.30 sqm	1252 sq ft
External area	42.89 sqm	461 sq ft
Living area	6.78m x 5.94m	22'3" x 19'6"
Kitchen	3.10m x 2.18m	10'2" x 7'2"
Bedroom 1	3.05m x 3.12m	10'0" x 10'3"
Bedroom 2	3.00m x 3.05m	9'10" x 10'0"
Bedroom 3	3.07m x 3.25m	10'1" x 10'8"
Balcony (N)	1.02m x 6.68m	3'4" x 21'11"
Roof Terrace (N)	4.65m x 5.36m	15'3" x 17'7"
Roof Terrace (S)	1.83m x 6.10m	6'0" x 20'0"

20

floorplans
CORE B | SIXTH FLOOR

B6.02 / 3 BED	124.71 sqm	1342 sq ft
Apartment area	107.40 sqm	1156 sq ft
External area	17.31 sqm	186 sq ft
Living area	4.01m x 6.78m	13'2" x 22'3"
Kitchen	3.25m x 1.93m	10'8" x 6'4"
Bedroom 1	3.05m x 3.20m	10'0" x 10'6"
Bedroom 2	3.05m x 3.35m	10'0" x 11'0"
Bedroom 3	2.74m x 3.35m	9'0" x 11'0"
Balcony (S)	2.95m x 5.87m	9'8" x 19'3"

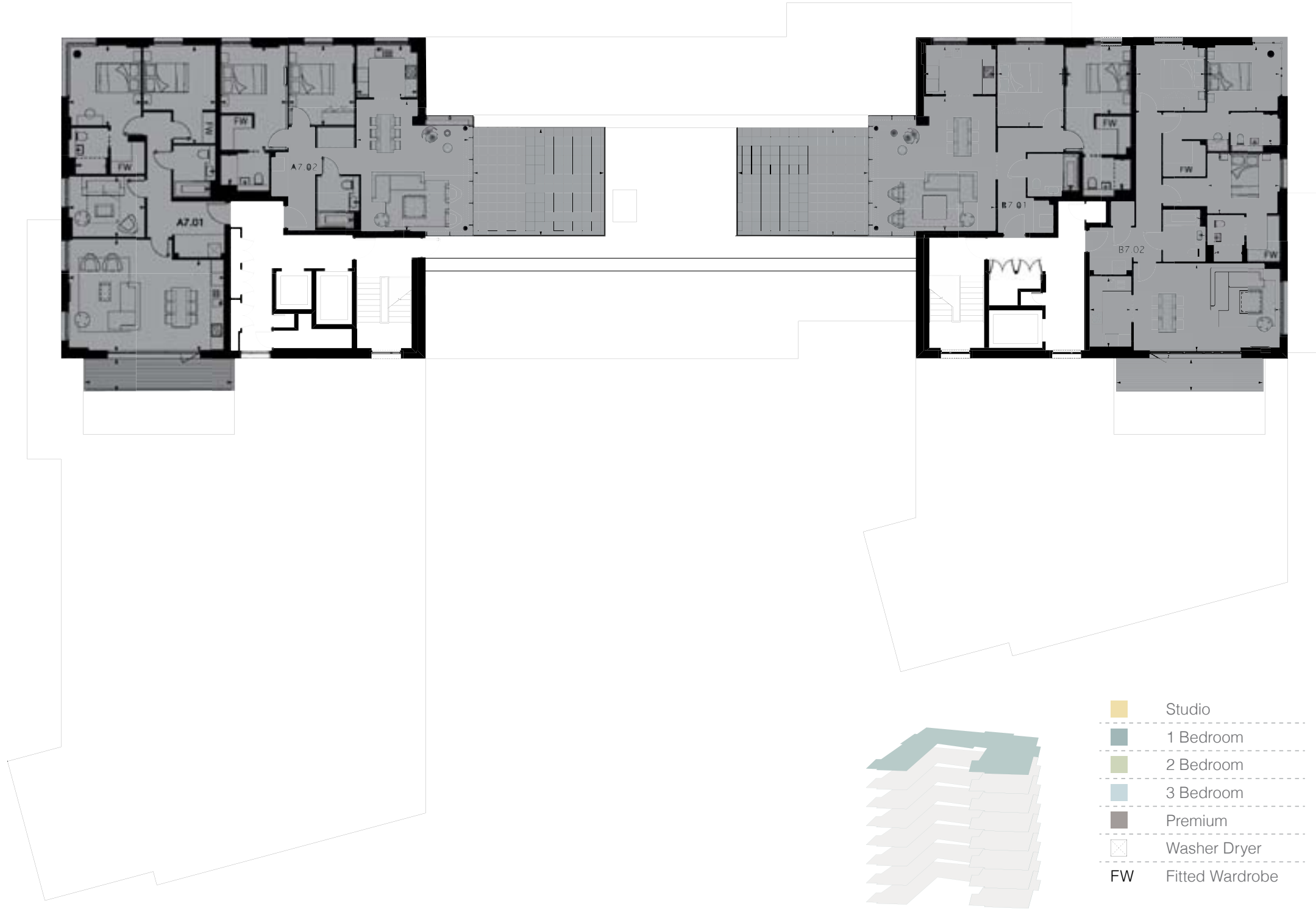
20

floorplans

CORE A | SEVENTH FLOOR

A7.01 / 3 BED	109.25 sqm	1177 sq ft
Apartment area	98.90 sqm	1065 sq ft
External area	10.35 sqm	112 sq ft
Living/Kitchen/Dining	7.21m x 5.18m	23'8" x 17'0"
Bedroom 1	3.73m x 3.35m	12'3" x 11'0"
Bedroom 2	4.55m x 3.33m	14'11" x 10'11"
Bedroom 3	2.82m x 3.53m	9'3" x 11'7"
Balcony (S)	1.52m x 6.81m	5'0" x 22'4"

A7.02 / 2 BED	115.22 sqm	1240 sq ft
Apartment area	85.0 sqm	915 sq ft
External area	30.22 sqm	325 sq ft
Living area	6.10m x 5.21m	20'0" x 17'1"
Kitchen	2.82m x 2.41m	9'3" x 7'11"
Bedroom 1	4.88m x 3.05m	16'0" x 10'0"
Bedroom 2	3.71m x 3.05m	12'2" x 10'0"
Roof Terrace (S)	6.07m x 4.98m	19'11" x 16'4"



floorplans

CORE B | SEVENTH FLOOR



B7.01 / 2 BED	118.92 sqm	1280 sq ft
Apartment area	88.70 sqm	955 sq ft
External area	30.22 sqm	325 sq ft
Living area	6.22m x 5.69m	20'5" x 18'8"
Kitchen	3.33m x 2.26m	10'11" x 7'5"
Bedroom 1	3.23m x 3.05m	10'7" x 10'0"
Bedroom 2	3.76m x 3.05m	12'4" x 10'0"
Roof Terrace (S)	6.07m x 4.98m	19'11" x 16'4"

B7.02 / 3 BED	117.75 sqm	1268 sq ft
Apartment area	107.40 sqm	1156 sq ft
External area	10.35 sqm	112 sq ft
Living area	4.01m x 6.78m	13'2" x 22'3"
Kitchen	3.25m x 1.93m	10'8" x 6'4"
Bedroom 1	3.05m x 3.20m	10'0" x 10'6"
Bedroom 2	3.05m x 3.35m	10'0" x 11'0"
Bedroom 3	2.74m x 3.35m	9'0" x 11'0"
Balcony (S)	1.52m x 6.81m	5'0" x 22'4"

21 *Directions*

DIRECTIONS

Sales and Marketing Suite

Riverside Apartments
Woodberry Grove
London N4 2LT
+44(0)20 8985 9918
www.woodberrypark.co.uk

Directions to Woodberry Park:

By Car:

Driving north from London along Green Lanes (A105) at the junction of Seven Sisters Road (A503) turn right and proceed along Seven Sisters Road to the traffic lights and the junction with Woodberry Grove and turn right. Proceed along Woodberry Grove past Goodchild Road on your right and the Sales and Marketing suite can be found on the ground floor facing the reservoir.

By Tube:

Take exit 2 from Manor House station and proceed along Woodberry Down until you reach the junction with Woodberry Grove and then turn right. Walk along Woodberry Grove and the sales and marketing suite can be found facing the reservoir on the right hand side.



The information in this document is indicative and is intended to act as a guide only as to the finished product. Accordingly, due to Berkeley policy of continuous improvement, the finished product may vary from the information provided. These particulars should not be relied upon as accurately describing any of the specific matters described by any order under the Property Misdescriptions Act 1991. This information does not constitute a contract, or warranty. The dimensions given on plans are subject to minor variations and are not intended to be used for carpet sizes, appliance sizes or items of furniture. Woodberry Park is a marketing name and will not necessarily form part of the approved postal address. Applicants are advised to contact Berkeley to ascertain the availability of any particular property.



Berkeley
Designed for life

