

HIGH SPECIFICATION NEW HOMES FROM REDROW ~ A BETTER WAY TO LIVE



INDUSTRIAL SITE TO INSPIRED LUXURY HOMES: RE-CONNECTING THE LAND AT LYMINGTON SHORES

Once a disused factory, the site upon which Lymington Shores now sits has been transformed; re-connecting the land to the heart of Lymington Town to build a vibrant new community.

REGENERATION

Regenerating the previously unloved and neglected land has been at the forefront of award-winning housebuilder Redrow Homes' development plan during the creation of new homes at Lymington Shores.

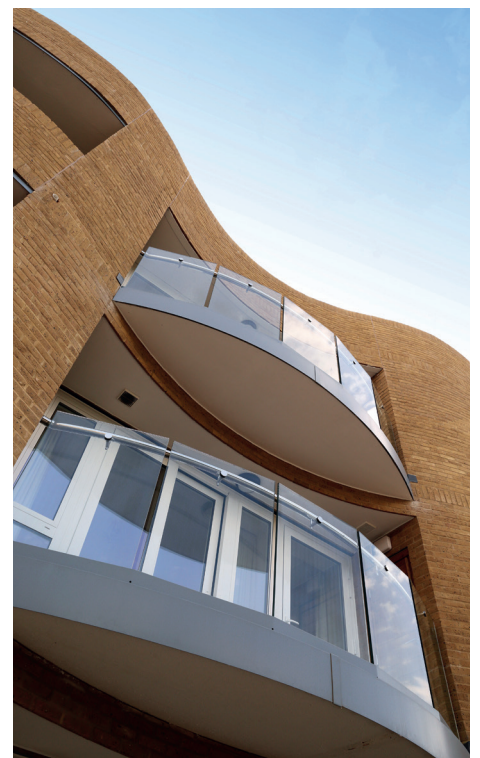
Cut-off by the railway line, the previous industrial estate was almost inaccessible, and isolated the public from the beautiful shoreline of the River Lymington. The creation

of Lymington Shores, which is set to be fully completed towards the end of 2017, has given the eastern end of town a renewed lease of life and a series of new public spaces and community hubs, including an art gallery and marina.

ARCHITECTURE

Complementing the river and maritime connection, the new homes have been thoughtfully designed to showcase the location and enhance the area. As a result, the public will now be able to enjoy the river and its wildlife for the first time in over 50 years, through the creation of the new riverside walk.

The architecture has been meticulously planned and designed to reflect its setting to provide a welcoming and characterful sense of place. Features such as the Crinkle Crackle wall, mirror the distinct architecture of the town as do the Georgian and Victorian brickwork featured in Lymington high street.





RESIDENTS

Tony (72) and Peggy Venn (63), moved to Lymington Shores last year. Peggy commented: "Every day we wake up and think: how lucky are we? We feel we're very lucky to live in such a lovely place, in a lovely home, and with all these lovely people around us."

"We are definitely happy to have made the move to Lymington Shores. It's the best thing we have done and we're really thrilled with it, we can't express how brilliant it's been."

Mark Vanson, sales director at Redrow Homes (Southern Counties) said: "We are delighted to see so many residents like Tony and Peggy making Lymington Shores their home."

"The community here is fantastic and we've come such a long way since the original factory site. It's a real privilege to have witnessed this

journey and seen how far we've progressed and the positive difference we've made to the area.

"Before Lymington Shores arrived, the old industrial estate area was cut off from the town and not a pleasant place. The new homes and facilities have given the site a new lease of life which is great to see."

Another satisfied customer, Josef Wolf (43), who recently bought with Redrow Homes said: "Our experience has been fantastic, something which we will do all over again without any hesitation!"

"Many builders would not be as flexible as Redrow Homes when it comes to buying off plan; we were given dozens of options, from kitchen to bathroom, from sockets to spot lights."

COMMUNITY

A number of community events have been held at Lymington Shores, most recently the team hosted a visit from the Lymington International Twinning Association and the Almansa Mayor to celebrate Lymington's twinned status with Almansa, Spain.

A commemorative tree was planted on the aptly named Almansa Way, the main road leading through the development, to mark the occasion.

Ian Kempt, Sales Consultant at Lymington Shores, Redrow (Southern Counties) said: "It was an honour to welcome the Lymington International Twinning Association and the Almansa Twinning Society to Almansa Way at Lymington Shores."

"We are very proud to be able to contribute to fostering friendships between Lymington and their twin towns. We hope this tree, which has been planted in recognition of the Almansa union, will remind residents and visitors alike of this great partnership and continued friendship."

PRICES AND AVAILABILITY

Since the launch of the development, thousands of people have registered their interest in the development which features a selection of one and two-bedroom apartments and penthouses. Prices start from £324,950.



DISCOVER A NEW REDROW HOME AT LYMINGTON

Lymington Shores, Bridge Road, Lymington SO41 9BZ
Call 01590 718133 Visit [redrow.co.uk/lymington](https://www.redrow.co.uk/lymington)

