



SPEAK TO ONE OF OUR
SALES ADVISORS TODAY

CALL **01283 888 700** OR VISIT
WWW.LAKESIDE-APARTMENTS.CO.UK

Barton Marina, Barton Turn, Barton under Needwood
Burton upon Trent, DE13 8AS



LakeSide

A P A R T M E N T S
AT BARTON MARINA



INTRODUCING

A NEW COLLECTION OF
STYLISH TWO BEDROOM
LAKESIDE, MARINASIDE &
PENTHOUSE APARTMENTS
AT BARTON MARINA

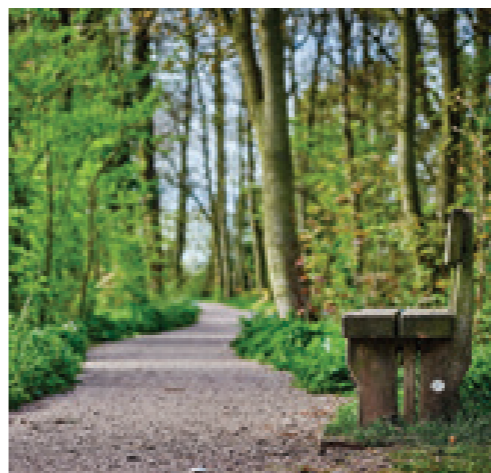
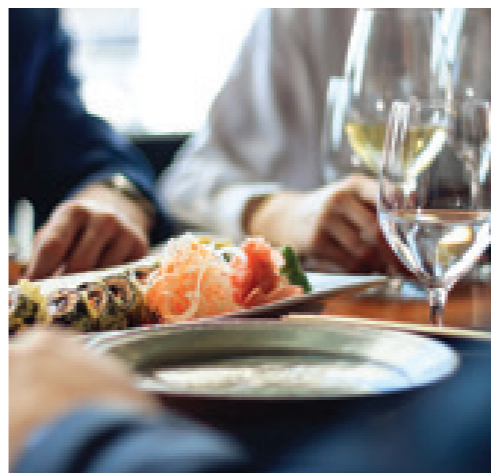


Computer Generated Images of apartment exteriors used throughout this brochure - details may vary.



Find Your Side

INTRODUCING A NEW WAY OF LIVING;
BLENDING HIGH QUALITY APARTMENTS WITH
A BEAUTIFUL WATERSIDE LOCATION



Everything
on your
doorstep

Lakeside or marinaside?
Which will you prefer?

You have restaurants, bars and delicatessens to one side, and lakes, woodland, and towpaths to the other. With such a beautiful natural location, living at Lakeside Apartments really does open up a new side of life every day.

Lake Side

AT YOUR NEW HOME

Find yourself
with a breath of fresh air

Nature calling

Take time out. Relax and find yourself in the fresh, clean air of Barton Marina. With welcoming woodland and a myriad of walks and pathways, you're never far from nature at Lakeside Apartments.

Alive with activity Barton Marina is a perfect place for family and friends to visit. Home to over 300 boats, you're free to explore in all directions by road, canal, footpath and cycle ways.





Marina Side

AT YOUR NEW HOME

Explore the brighter side of life

Café culture

Bustling with life, Barton Marina offers a host of bars, restaurants and cafés where you can relax and unwind at the end of a busy day.

The Red Carpet Cinema & Café Bar is a short hop away. Comprising a cinema and pizzeria, it's the perfect combination of movies and food. Or perhaps change it up by visiting Nipa Thai for delicious, authentic Thai food.

The red carpet treatment

Treat yourself to a new outfit and all the accessories at one of a handful of boutiques. Before deciding between a night out or a night in.

You'll find all you need for a special night in at The Butcher, Baker Farm Shop with the highest quality in local produce and all the trimmings. Or choose live entertainment, freshly prepared food and real ales, fine wines, or cocktails at The Waterfront Pub.



Live a life
without
compromise



OutSide

AT YOUR NEW HOME

Set the precedence

From the moment you arrive at Lakeside Apartments the imposing façade sets the tone for a life without compromise.

Balcony or patio?

All ground floor apartments enjoy generous patios* and all first floor and penthouse apartments come with private balconies.

A private gated community

Security is paramount at Lakeside Apartments. As a private gated community, you can relax feeling safe and secure at home or away.

Private parking spaces

Through the secure development gates you will find two dedicated parking spaces for each apartment.

Computer Generated Images of apartment exteriors used throughout this brochure - details may vary.

*With the exception of plots 31 and 32.



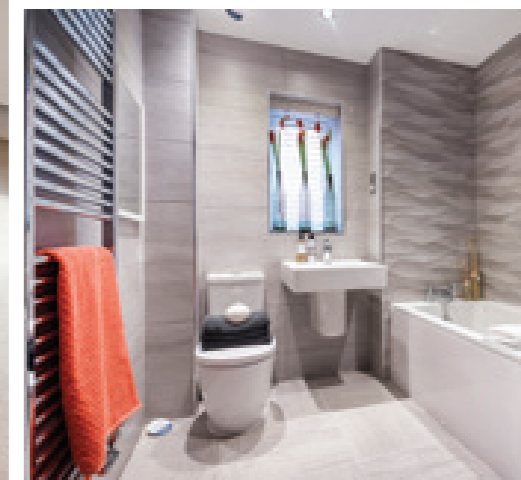
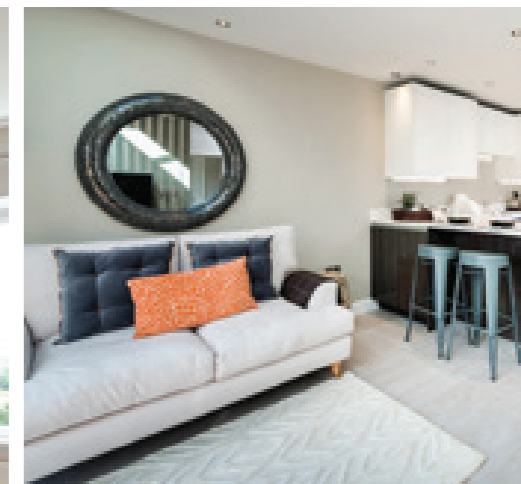
Image shows typical Cameron Homes interior.

InSide

AT YOUR NEW HOME



Images show typical Cameron Homes interior.



Contemporary style, traditional craftsmanship

Light and life

Light and airy, open plan living areas and carefully considered design make sure that your new Lakeside Apartment is bright and fresh throughout the day. As the light wanes, large windows and sliding doors reveal the beautiful setting - bringing the outside in.

Finer details

Meticulously thought out in every detail, your new home at Lakeside Apartments offers a contemporary specification throughout. From your kitchen to your bathroom, selected upgrade packages are available to help make your home your own.

Cosy Side

AT YOUR NEW HOME



Relax and unwind

With careful design consideration throughout, a Lakeside Apartment gives you all of the home comforts you expect with minimum hassle, allowing you to concentrate on what's important in your life.

Easy life

With 10-year NHBC warranty protecting your apartment and building maintenance for all exterior and communal areas covered, you won't need to lift a finger. Couple this with energy efficient appliances and apartment design, and you should find yourself with more time and more money to enjoy.



Life how
you want it
to be



LakeSide

APARTMENTS

BlockOne
PLOTS 1-20

BlockTwo
PLOTS 21-30

BlockThree
PLOTS 31-34

BlockFour
PLOTS 35-54





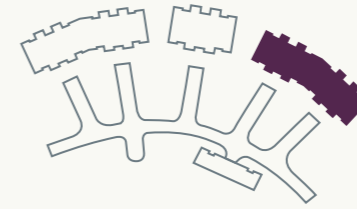
Computer Generated Images of apartment exteriors used throughout this brochure - details may vary.

Marina Side

A HIVE OF VIBRANT LIFE AND BEAUTIFUL VISTAS
COMPRISING OF 10 GROUND FLOOR & 10 FIRST FLOOR APARTMENTS



BlockOne



A1

PLOTS 1 & 5

A2

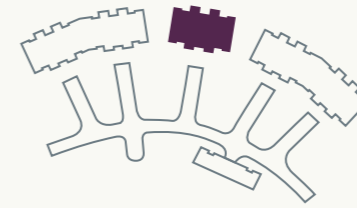
PLOTS 4, 8, 11 & 15

A3

PLOTS 14 & 18



BlockTwo

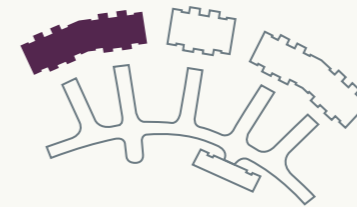


A4

PLOTS 21, 24, 25 & 28



BlockFour



A4

PLOTS 35 & 39

A5

PLOTS 48 & 52

A6

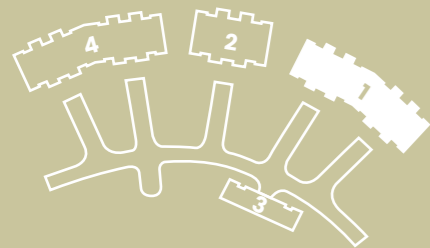
PLOTS 38, 42, 45 & 49

AVAILABLE IN
BLOCK 1

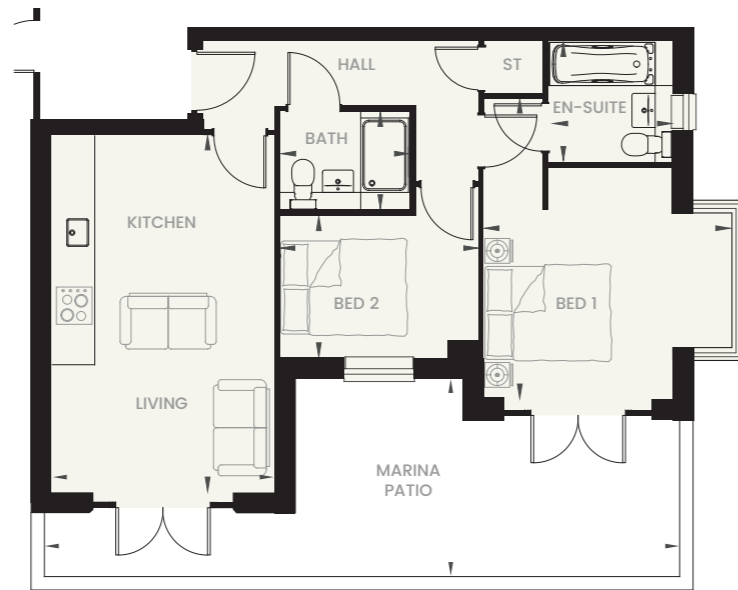
A1

Bedroom 1	3.75m* x 4.82m* 12' 4"* x 15' 10"*
En-suite	1.97m x 1.90m 6' 6" x 6' 3"
Bedroom 2	3.18m x 2.26m 10' 5" x 7' 5"
Bathroom	2.05m x 1.55m 6' 9" x 5' 1"
Kitchen / Living	3.57m x 5.73m 11' 9" x 18' 10"
Patio (Marina)	10.25m* x 3.20m* 33' 8"* x 10' 6"*
Balcony (Marina)	6.34m* x 2.10m* 20' 10"* x 6' 11"*

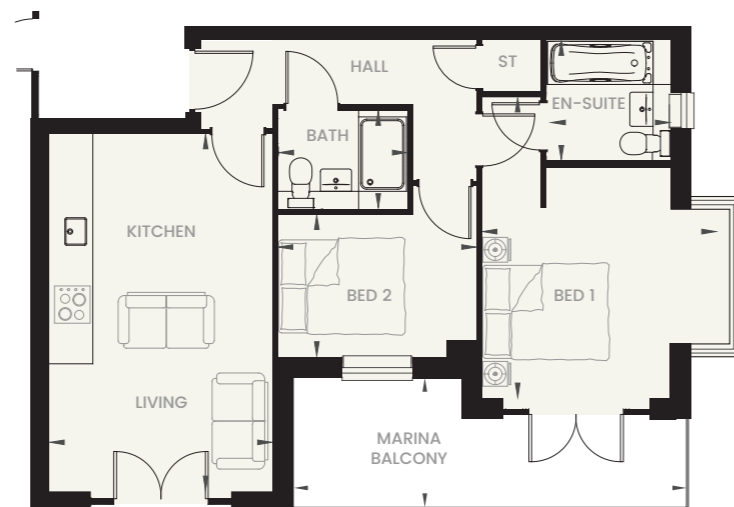
Total area = 58.99 sq.m
635 sq.ft



GROUND FLOOR OPTION
PLOT 1

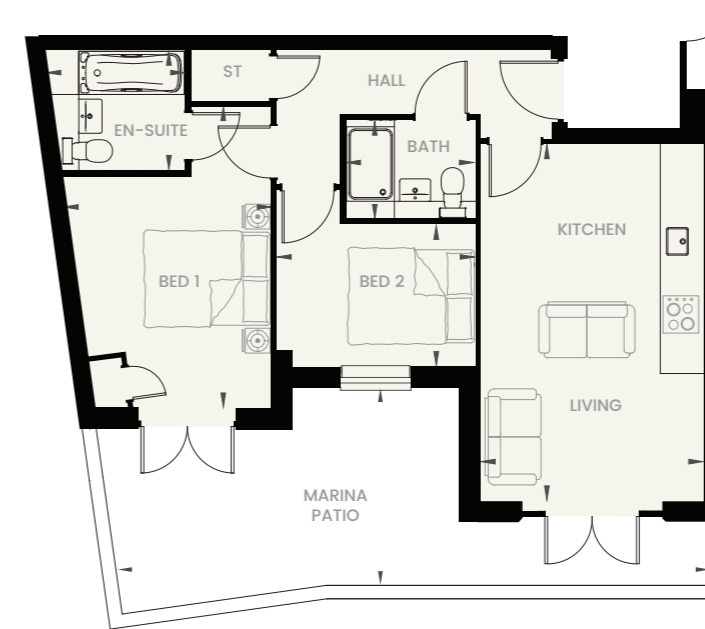


FIRST FLOOR OPTION
PLOT 5

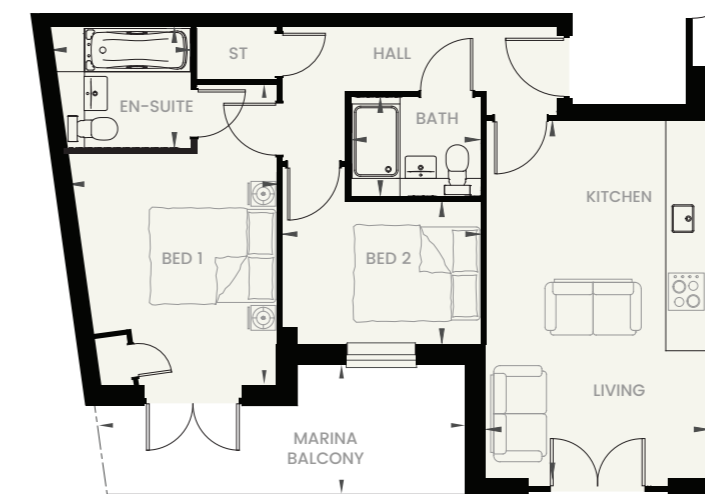


*Maximum Dimensions Apartments may be handed

GROUND FLOOR OPTION
PLOTS 4 & 11



FIRST FLOOR OPTION
PLOTS 8 & 15



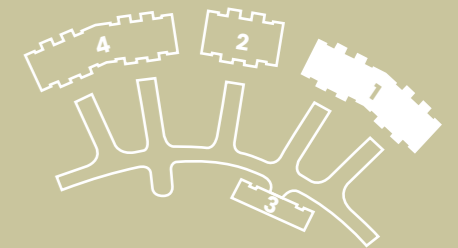
Apartment may be handed *Maximum Dimensions

AVAILABLE IN
BLOCK 1

A2

Bedroom 1	3.34m* x 4.84m* 11' 0"* x 15' 11"*
En-suite	2.22m* x 1.90m 7' 4"* x 6' 3"
Bedroom 2	3.18m x 2.26m 10' 5" x 7' 5"
Bathroom	2.05m x 1.55m 6' 9" x 5' 1"
Kitchen / Living	3.57m x 5.73m 11' 9" x 18' 10"
Patio (Marina)	9.50m* x 3.20m* 31' 2"* x 10' 6"*
Balcony (Marina)	5.98m* x 2.10m* 19' 7"* x 6' 11"*

Total area = 58.44 sq.m
629 sq.ft

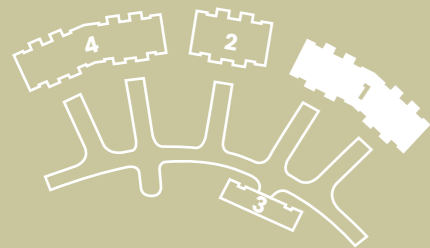


AVAILABLE IN
BLOCK 1

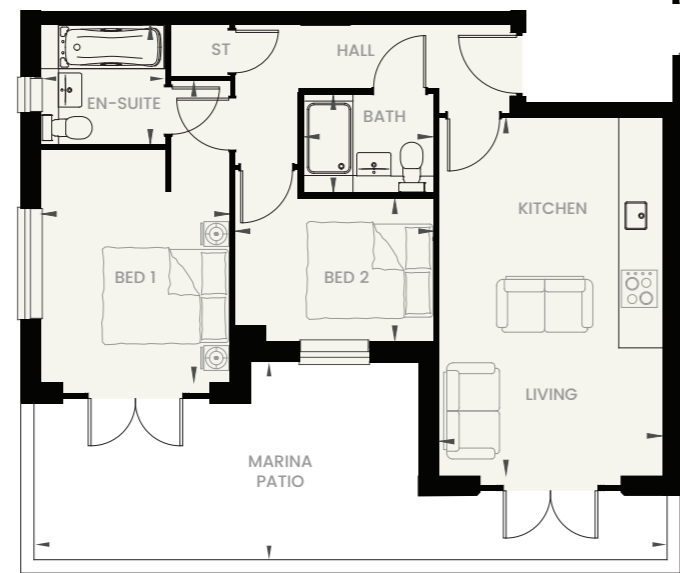
A3

Bedroom 1	3.01m x 4.82m* 9' 10" x 15' 10"*
En-suite	1.97m x 1.90m 6' 6" x 6' 3"
Bedroom 2	3.18m x 2.26m 10' 5" x 7' 5"
Bathroom	2.05m x 1.55m 6' 9" x 5' 1"
Kitchen / Living	3.57m x 5.73m 11' 9" x 18' 10"
Patio (Marina)	10.25m* x 3.20m* 33' 8" x 10' 6"
Balcony (Marina)	6.34m* x 2.10m* 20' 10" x 6' 11"

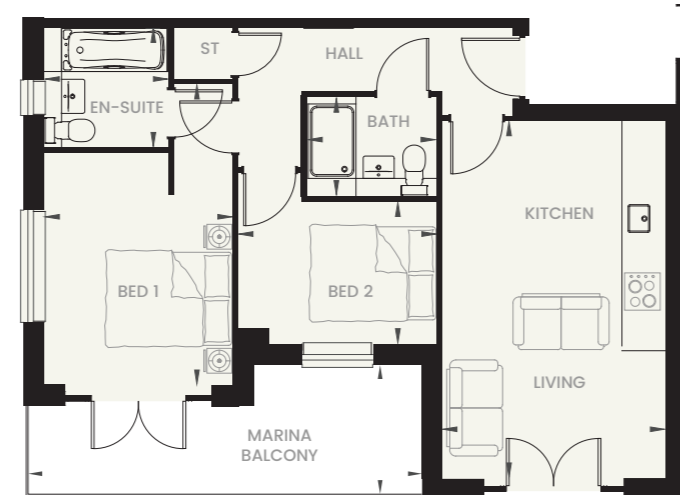
Total area = 57.51 sq.m
619 sq.ft



GROUND FLOOR OPTION
PLOT 14

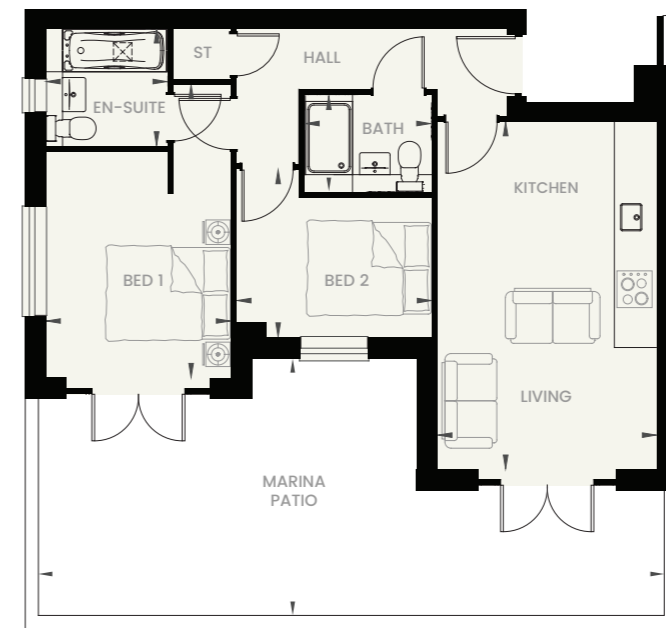


FIRST FLOOR OPTION
PLOT 18

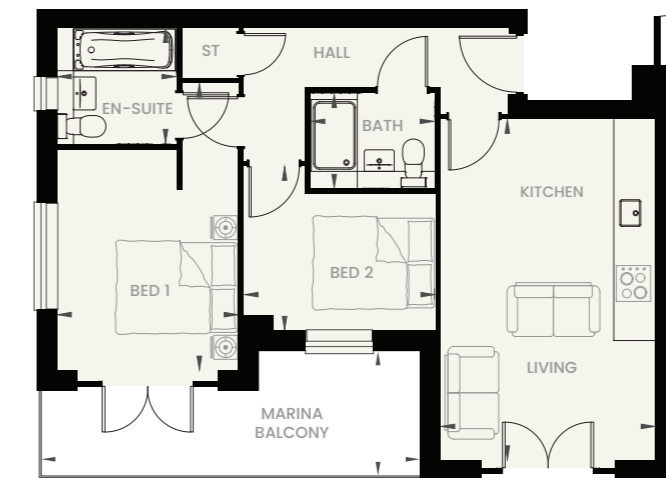


*Maximum Dimensions Apartments may be handed

GROUND FLOOR OPTION
PLOTS 21, 24 & 35



FIRST FLOOR OPTION
PLOTS 25, 28 & 39



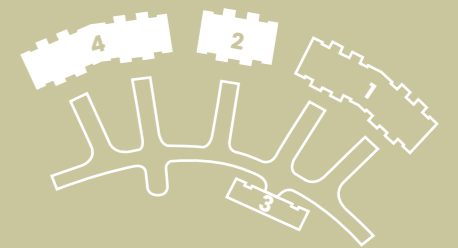
Apartment may be handed *Maximum Dimensions

AVAILABLE IN
BLOCK 2 & 4

A4

Bedroom 1	3.01m x 4.78m* 9' 10" x 15' 8"*
En-suite	1.97m x 1.90m 6' 6" x 6' 3"
Bedroom 2	3.18m x 2.73m* 10' 5" x 8' 11"*
Bathroom	2.05m x 1.55m 6' 9" x 5' 1"
Kitchen / Living	3.57m x 5.68m 11' 9" x 18' 8"
Patio (Marina)	10.25m* x 4.21m* 33' 8" x 13' 10"
Balcony (Marina)	6.26m* x 2.04m* 20' 7" x 6' 8"

Total area = 57.04 sq.m
614 sq.ft

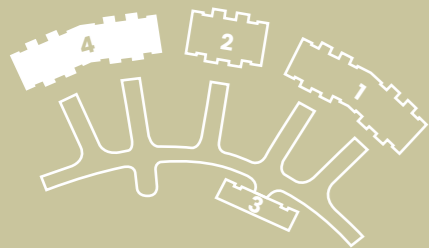


AVAILABLE IN
BLOCK 4

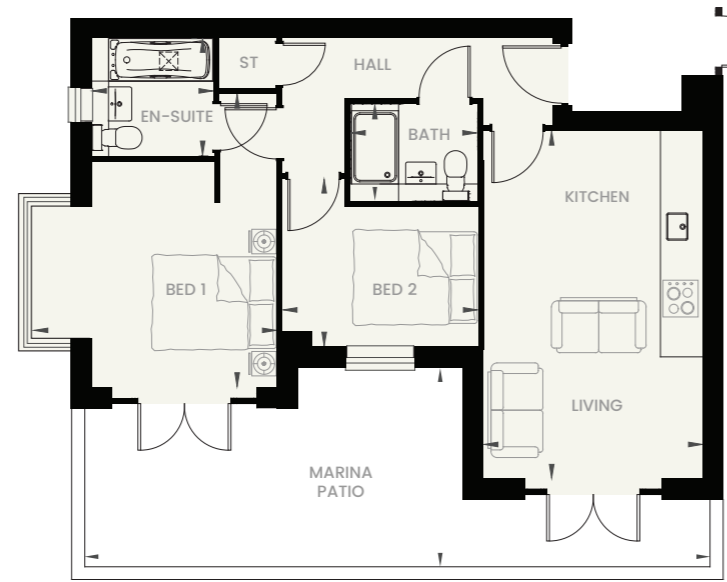
A5

Bedroom 1	3.76m* x 4.78m* 12' 4"* x 15' 8"*
En-suite	1.97m x 1.87m 6' 6" x 6' 2"
Bedroom 2	3.18m x 2.73m* 10' 5" x 8' 11"*
Bathroom	2.05m x 1.55m 6' 9" x 5' 1"
Kitchen / Living	3.57m x 5.68m 11' 9" x 18' 8"
Patio (Marina)	10.25m* x 3.20m* 33' 8"* x 10' 6"*
Balcony (Marina)	6.26m* x 2.04m* 20' 7"* x 6' 8"*

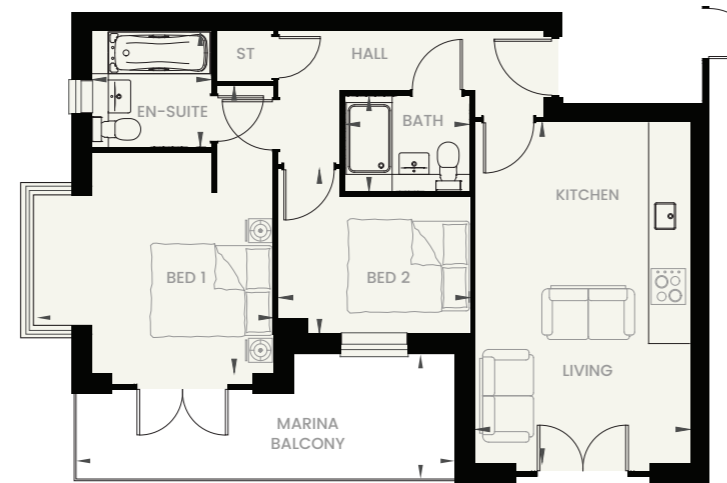
Total area = 58.43 sq.m
629 sq.ft



GROUND FLOOR OPTION
PLOT 48

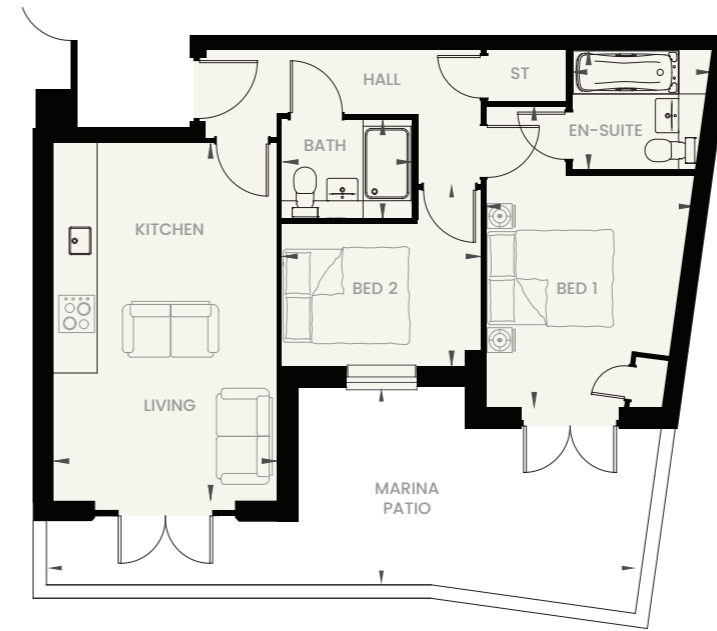


FIRST FLOOR OPTION
PLOT 52

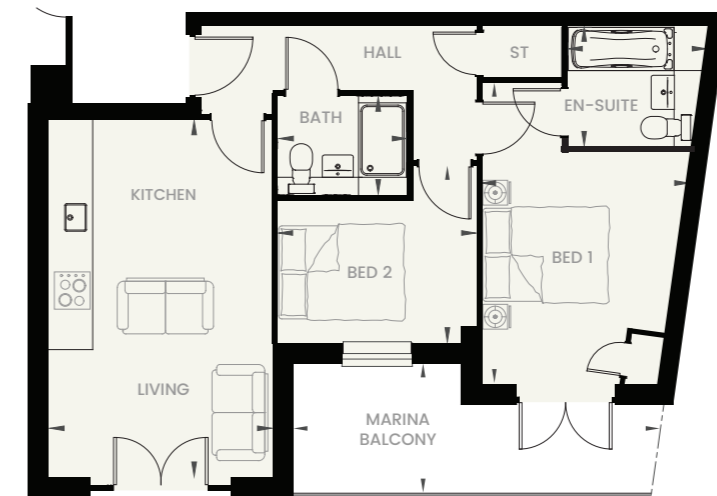


*Maximum Dimensions Apartments may be handed

GROUND FLOOR OPTION
PLOTS 38 & 45



FIRST FLOOR OPTION
PLOTS 42 & 49



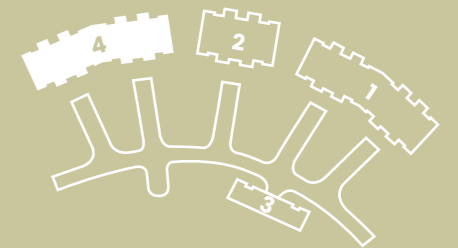
Apartment may be handed *Maximum Dimensions

AVAILABLE IN
BLOCK 4

A6

Bedroom 1	3.32m* x 4.78m* 10' 11"* x 15' 8"*
En-suite	2.22m* x 1.87m 7' 3"* x 6' 2"
Bedroom 2	3.18m x 2.73m* 10' 5" x 8' 11"*
Bathroom	2.05m x 1.55m 6' 9" x 5' 1"
Kitchen / Living	3.57m x 5.68m 11' 9" x 18' 8"
Patio (Marina)	9.49m* x 3.20m* 31' 2"* x 10' 6"*
Balcony (Marina)	5.89m* x 2.04m* 19' 4"* x 6' 8"*

Total area = 58.06 sq.m
625 sq.ft



*Maximum Dimensions



Computer Generated Images of apartment exteriors used throughout this brochure - details may vary.

Lake Side

LIVE AN EXCITING NEW LIFE CLOSE TO THE WATER
COMPRISING OF 10 GROUND FLOOR & 10 FIRST FLOOR APARTMENTS



BLOCK ONE LAKESIDE ELEVATION

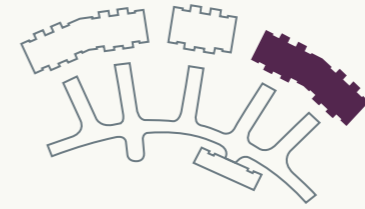


BLOCK TWO LAKESIDE ELEVATION



BLOCK FOUR LAKESIDE ELEVATION

BlockOne



B1

PLOTS 2 & 6

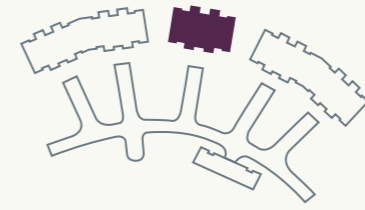
B2

PLOTS 3, 7, 12 & 16

B3

PLOTS 13 & 17

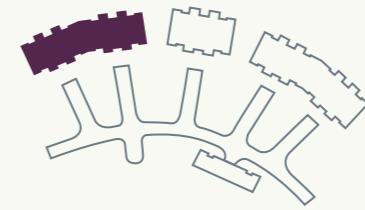
BlockTwo



B4

PLOTS 22, 23, 26 & 27

BlockFour



B4

PLOTS 36 & 40

B5

PLOTS 47 & 51

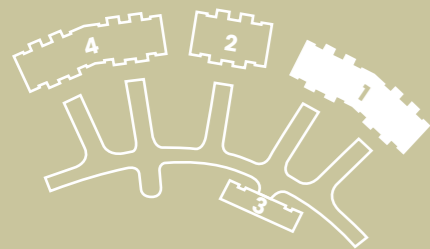
B6

PLOTS 37, 41, 46 & 50

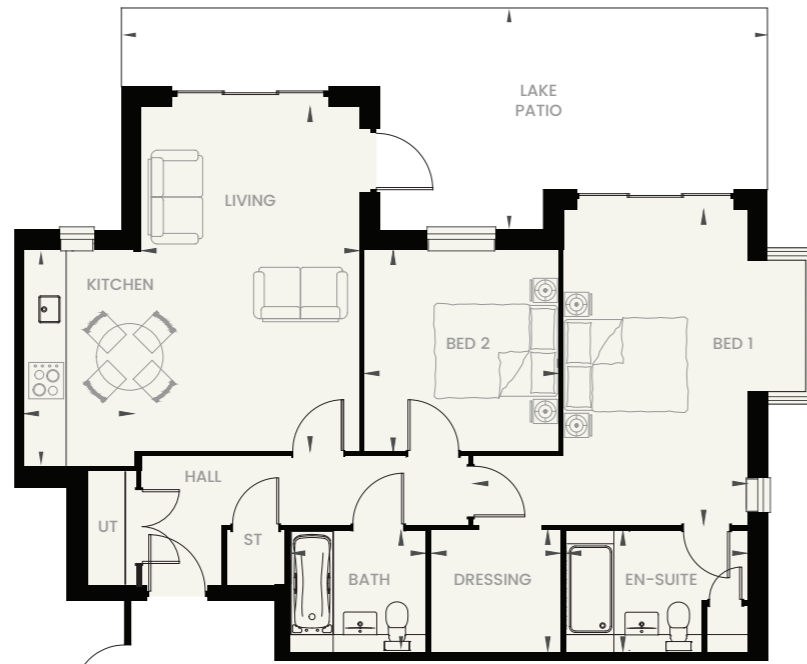
AVAILABLE IN
BLOCK 1

B1

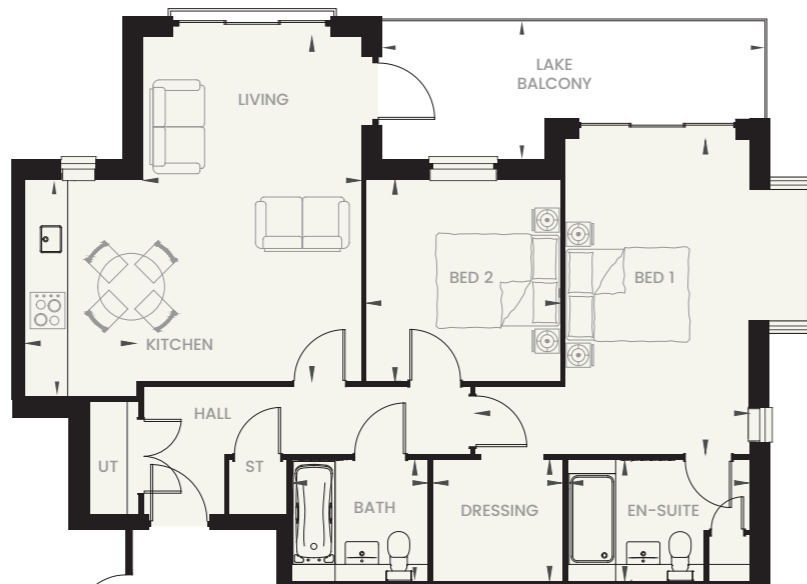
Bedroom 1	4.50m* x 5.18m 14' 9"* x 17' 0"
En-suite	2.96m x 1.96m 9' 9" x 6' 5"
Dressing Room	2.10m x 1.98m 6' 11" x 6' 6"
Bedroom 2	3.18m x 3.32m 10' 5" x 10' 11"
Bathroom	2.21m x 1.96m 7' 3" x 6' 5"
Kitchen	1.79m x 3.55m 5' 11" x 11' 8"
Living	3.57m x 5.66m 11' 9" x 18' 7"
Patio (Lake)	10.73m* x 3.67m* 35' 2"* x 12' 0"*
Balcony (Lake)	6.34m* x 2.29m* 20' 10"* x 7' 6"*
Total area =	85.01 sq.m 915 sq.ft



GROUND FLOOR OPTION
PLOT 2

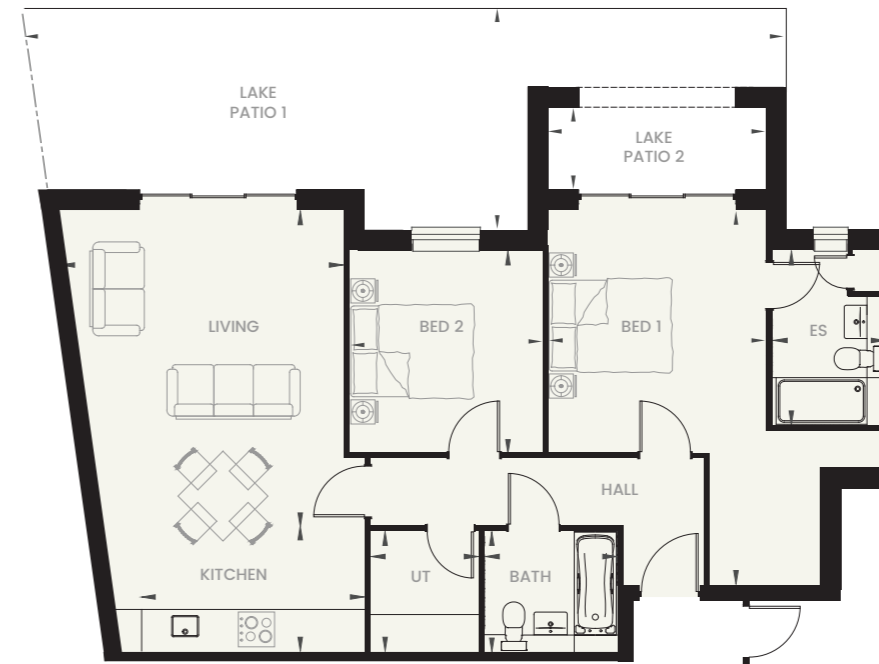


FIRST FLOOR OPTION
PLOT 6

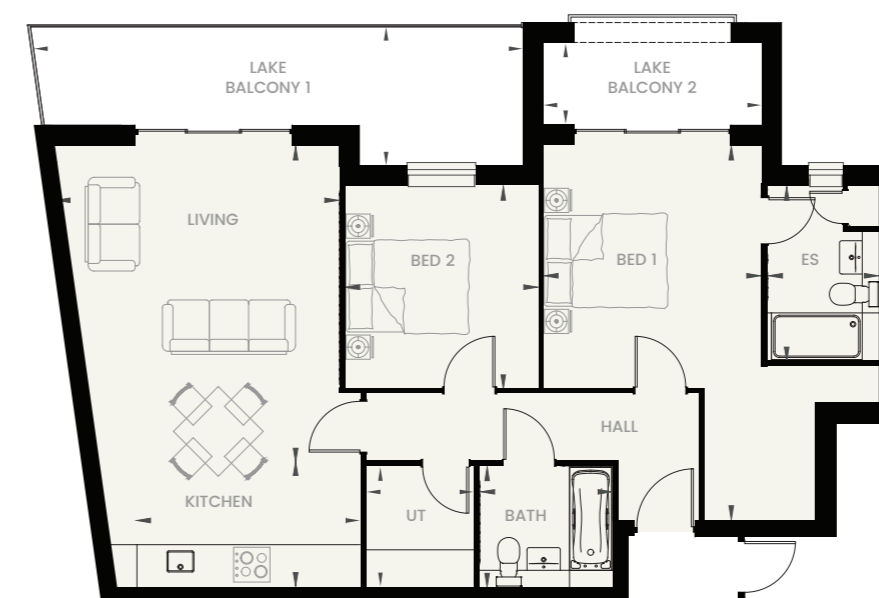


*Maximum Dimensions Apartments may be handed

GROUND FLOOR OPTION
PLOTS 3 & 12



FIRST FLOOR OPTION
PLOTS 7 & 16

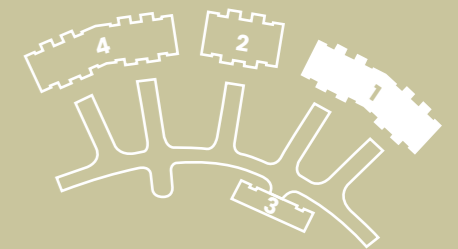


Apartment may be handed *Maximum Dimensions

AVAILABLE IN
BLOCK 1

B2

Bedroom 1	3.57m x 6.17m* 11' 9" x 20' 3"*
En-suite	1.81m x 2.86m 5' 11" x 9' 5"
Bedroom 2	3.16m x 3.33m 10' 5" x 10' 11"
Bathroom	2.16m x 1.97m 7' 1" x 6' 6"
Utility	1.76m x 1.97m 5' 9" x 6' 6"
Kitchen	3.68m x 2.06m 12' 1" x 6' 9"
Living	4.66m* x 5.21m 15' 4"* x 17' 1"
Patio 1 (Lake)	12.68m* x 3.67m* 41' 7"* x 12' 0"*
Patio 2 (Lake)	3.61m x 1.37m 11' 10" x 4' 6"
Balcony 1 (Lake)	8.17m* x 2.29m* 26' 10"* x 7' 6"*
Balcony 2 (Lake)	3.61m x 1.37m 11' 10" x 4' 6"
Total area =	85.66 sq.m 922 sq.ft

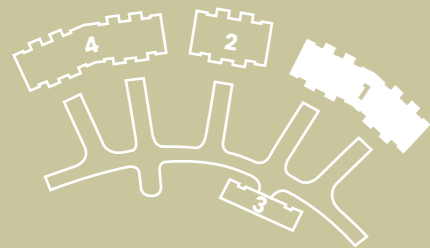


AVAILABLE IN
BLOCK 1

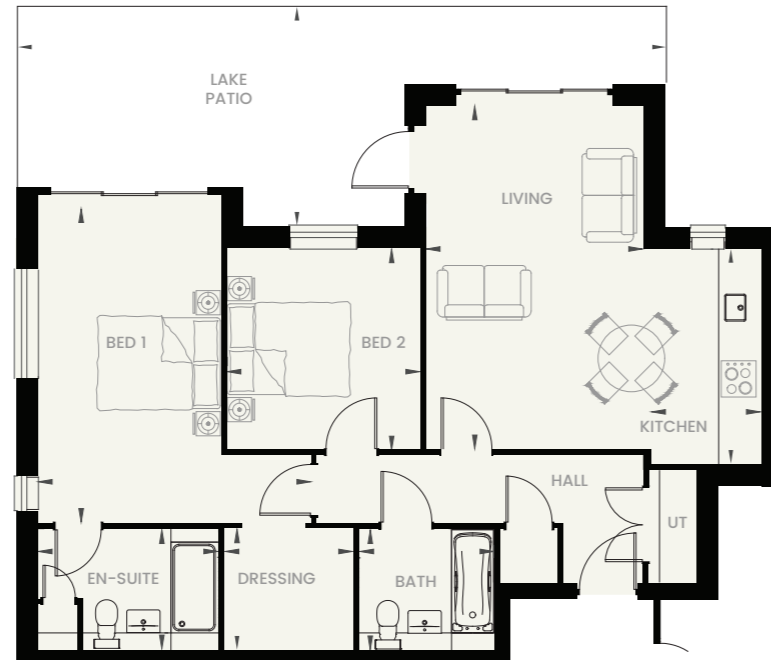
B3

Bedroom 1	4.50m* x 5.18m 14' 9"* x 17' 0"
En-suite	2.96m x 1.96m 9' 9" x 6' 5"
Dressing Room	2.10m x 1.98m 6' 11" x 6' 6"
Bedroom 2	3.18m x 3.32m 10' 5" x 10' 11"
Bathroom	2.21m x 1.96m 7' 3" x 6' 5"
Kitchen	1.79m x 3.55m 5' 11" x 11' 8"
Living	3.57m x 5.66m 11' 9" x 18' 7"
Patio (Lake)	10.73m* x 3.67m* 35' 2"* x 12' 0"*
Balcony (Lake)	6.34m* x 2.29m* 20' 10"* x 7' 6"*

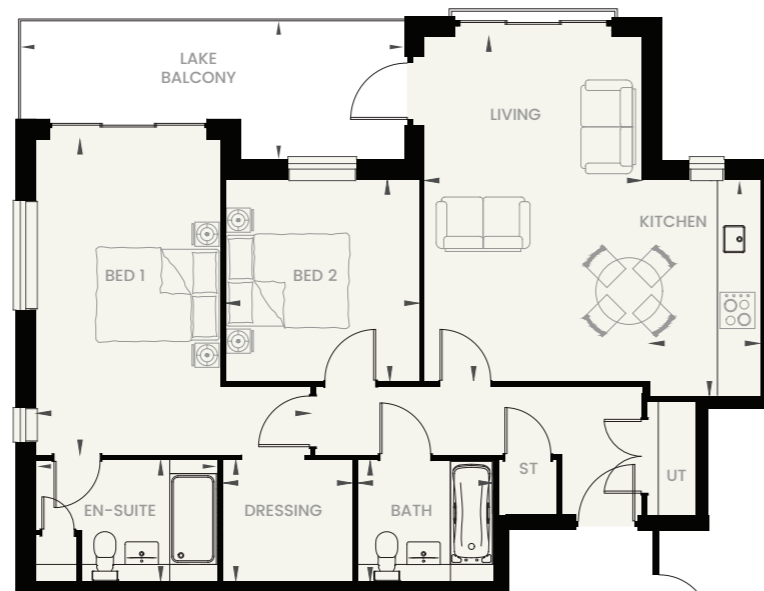
Total area = 83.52 sq.m
899 sq.ft



GROUND FLOOR OPTION
PLOT 13



FIRST FLOOR OPTION
PLOT 17

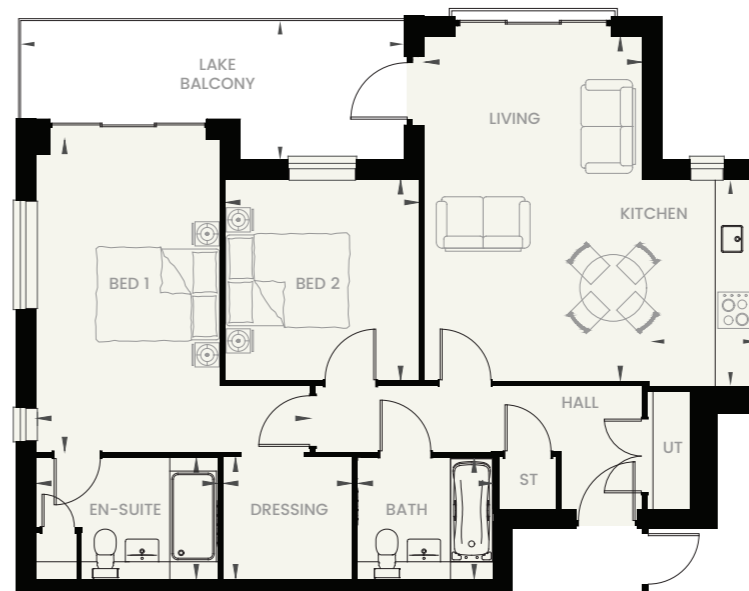


*Maximum Dimensions Apartments may be handed

GROUND FLOOR OPTION
PLOTS 22, 23 & 36



FIRST FLOOR OPTION
PLOTS 26, 27 & 40



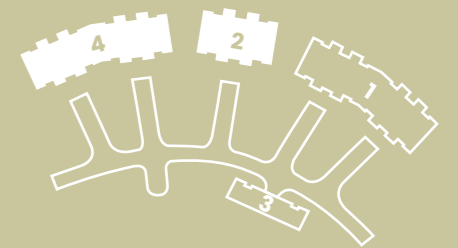
Apartments may be handed *Maximum Dimensions

AVAILABLE IN
BLOCK 2 & 4

B4

Bedroom 1	4.50m* x 5.14m 14' 9"* x 16' 10"
En-suite	2.96m x 1.97m 9' 9" x 6' 6"
Dressing Room	2.10m x 1.98m 6' 11" x 6' 6"
Bedroom 2	3.18m x 3.30m 10' 5" x 10' 10"
Bathroom	2.21m x 1.97m 7' 3" x 6' 6"
Kitchen	1.75m x 3.40m 5' 9" x 11' 2"
Living	3.57m x 5.66m 11' 9" x 18' 7"
Patio (Lake)	10.73m* x 3.67m* 35' 2"* x 12' 0"*
Balcony (Lake)	6.26m* x 2.26m* 20' 7"* x 7' 5"*

Total area = 82.68 sq.m
890 sq.ft

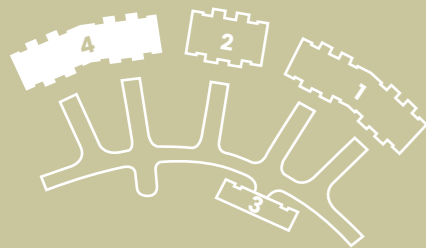


AVAILABLE IN
BLOCK 4

B5

Bedroom 1	4.50m* x 5.14m 14' 9"* x 16' 10"
En-suite	2.96m x 1.97m 9' 9" x 6' 6"
Dressing room	2.10m x 1.98m 6' 11" x 6' 6"
Bedroom 2	3.18m x 3.27m 10' 5" x 10' 9"
Bathroom	2.21m x 1.97m 7' 3" x 6' 6"
Kitchen	1.75m x 3.40m 5' 9" x 11' 2"
Living	3.57m x 5.64m 11' 9" x 18' 6"
Patio (Lake)	10.73m* x 3.67m* 35' 2"* x 12' 0"*
Balcony (Lake)	6.26m* x 2.26m* 20' 7"* x 7' 5"*

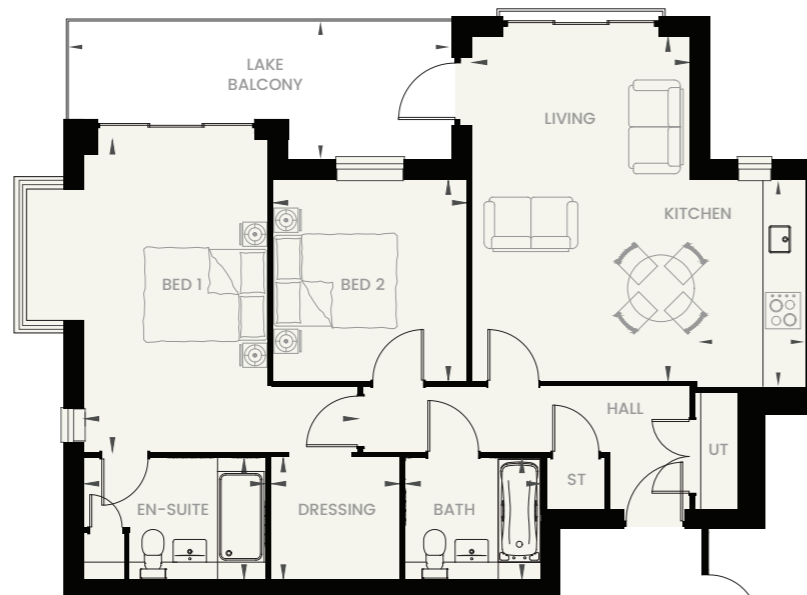
Total area = 83.98 sq.m
904 sq.ft



GROUND FLOOR OPTION
PLOT 47

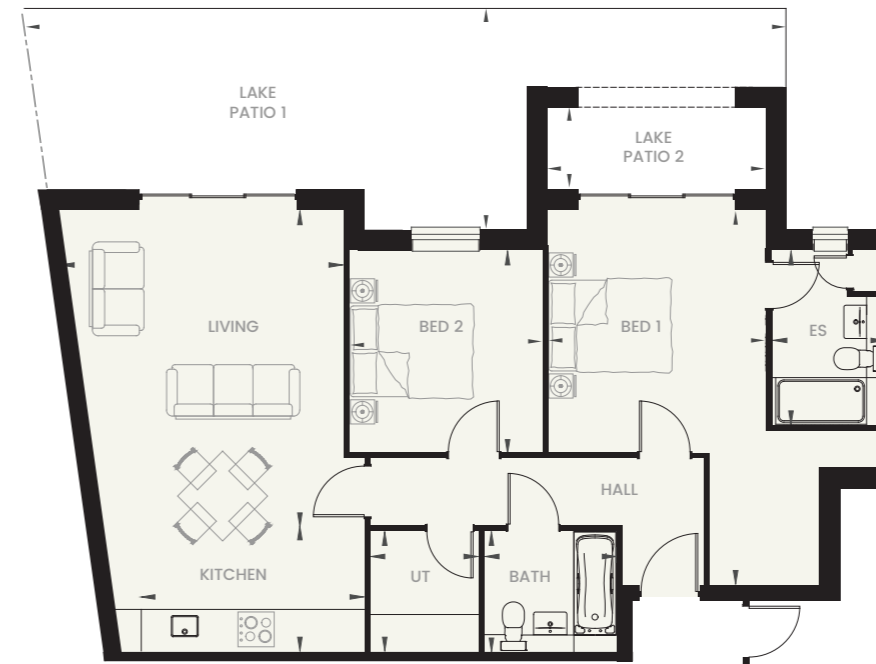


FIRST FLOOR OPTION
PLOT 51



*Maximum Dimensions Apartments may be handed

GROUND FLOOR OPTION
PLOT 37 & 46



FIRST FLOOR OPTION
PLOTS 41 & 50



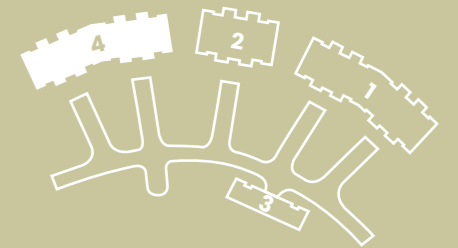
Apartments may be handed *Maximum Dimensions

AVAILABLE IN
BLOCK 4

B6

Bedroom 1	3.57m x 6.09m* 11' 9" x 19' 12"*
En-suite	1.77m x 2.86m 5' 10" x 9' 5"
Bedroom 2	3.16m x 3.28m 10' 5" x 10' 9"
Bathroom	2.16m x 1.97m 7' 1" x 6' 6"
Utility	1.76m x 1.97m 5' 9" x 6' 6"
Kitchen	3.68m x 2.10m 12' 1" x 6' 11"
Living	4.66m* x 5.14m 15' 4"* x 16' 10"
Patio 1 (Lake)	12.68m* x 3.67m* 41' 7"* x 12' 0"*
Patio 2 (Lake)	3.61m x 1.37m 11' 10" x 4' 6"
Balcony 1 (Lake)	8.01m* x 2.26m* 26' 4"* x 7' 5"*
Balcony 2 (Lake)	3.61m x 1.37m 11' 10" x 4' 6"

Total area = 84.17 sq.m
906 sq.ft





BLOCK ONE LAKESIDE ELEVATION

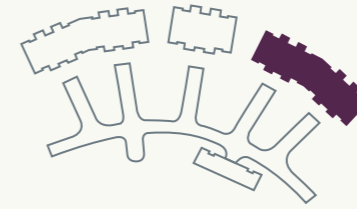
Computer Generated Images of apartment exteriors used throughout this brochure - details may vary.

TopSide

GET A WHOLE NEW VIEW IN A PENTHOUSE APARTMENT
COMPRISING OF 10 PENTHOUSE APARTMENTS



BlockOne

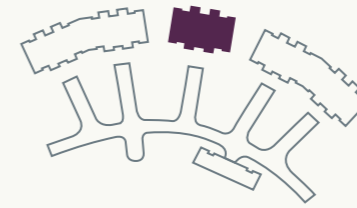


C1
PLOTS 9 & 20

C2
PLOTS 10 & 19



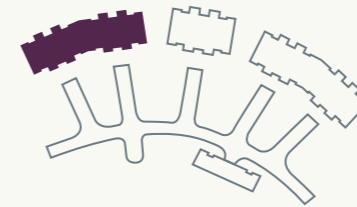
BlockTwo



C3
PLOTS 29 & 30



BlockFour



C3
PLOTS 43 & 54

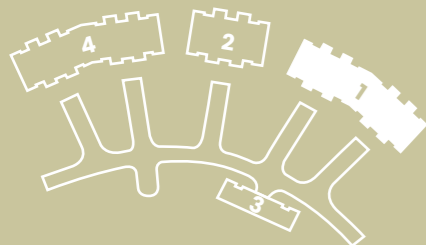
C4
PLOTS 44 & 53

AVAILABLE IN
BLOCK 1

C1

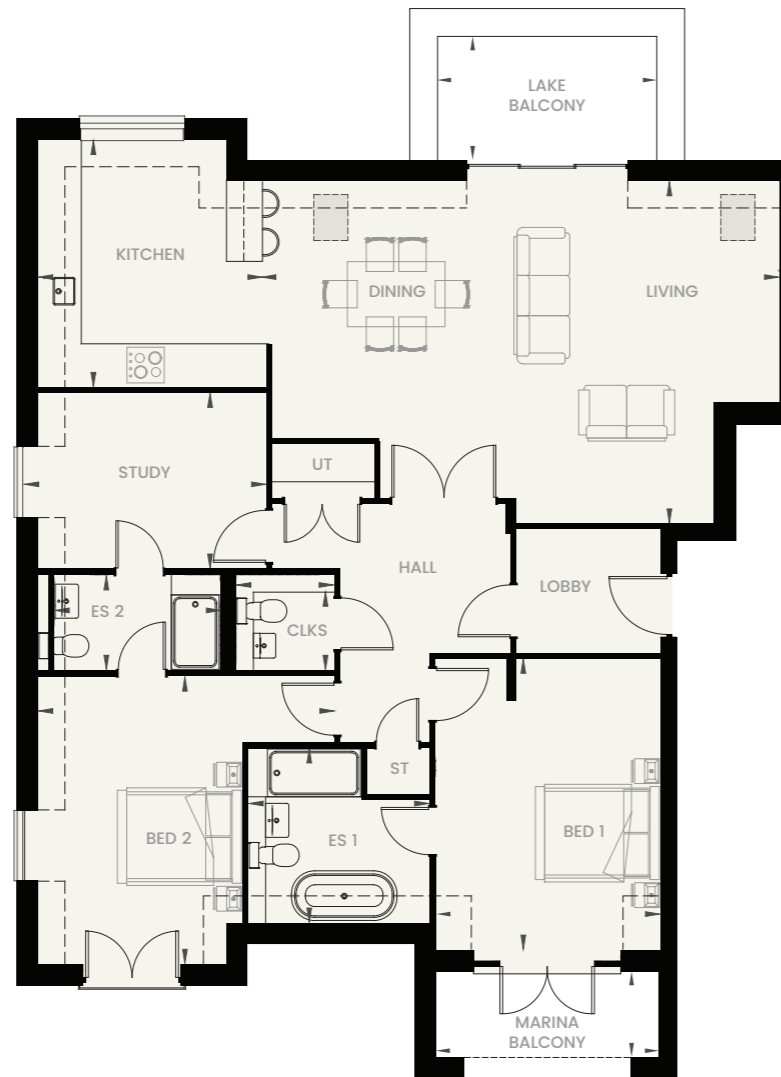
Bedroom 1	3.59m x 4.67m 11' 10" x 15' 4"
En-suite 1	2.89m* x 2.79m* 9' 6"* x 9' 2"*
Bedroom 2	4.76m* x 4.61m 15' 7"* x 15' 2"
En-suite 2	2.66m x 1.51m 8' 9" x 4' 11"
Cloakroom	1.55m x 1.24m 5' 1" x 4' 1"
Study	3.88m* x 2.82m 12' 9"* x 9' 3"
Kitchen	3.60m x 3.96m 11' 10" x 13' 0"
Living / Dining	8.33m x 5.50m* 27' 4" x 18' 1"*
Balcony (Marina)	3.57m x 1.38m 11' 9" x 4' 6"
Balcony (Lake)	3.53m x 2.00m 11' 7" x 6' 7"

Total area = 135.45 sq.m
1458 sq.ft



*Maximum Dimensions Apartments may be handed

PENTHOUSE PLOTS 9 & 20



PENTHOUSE PLOTS 10 & 19



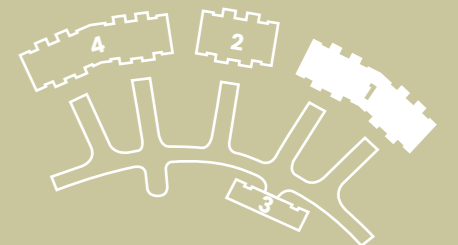
Apartments may be handed *Maximum Dimensions

AVAILABLE IN
BLOCK 1

C2

Bedroom 1	3.59m x 4.00m 11' 10" x 13' 2"
En-suite 1	3.14m x 1.97m 10' 4" x 6' 6"
Dressing Room	3.29m x 1.47m 10' 10" x 4' 10"
Bedroom 2	4.07m* x 4.98m 13' 4"* x 16' 4"
En-suite 2	1.70m x 2.36m 5' 7" x 7' 9"
Cloakroom	1.33m x 1.31m 4' 4" x 4' 4"
Study	3.39m* x 4.23m 11' 2"* x 13' 11"
Kitchen	2.80m x 5.50m* 9' 2" x 18' 1"*
Living / Dining	6.59m x 5.50m* 21' 7" x 18' 1"*
Balcony (Marina)	3.57m x 1.38m 11' 9" x 4' 6"
Balcony (Lake)	3.53m x 2.00m 11' 7" x 6' 7"

Total area = 142.33 sq.m
1532 sq.ft

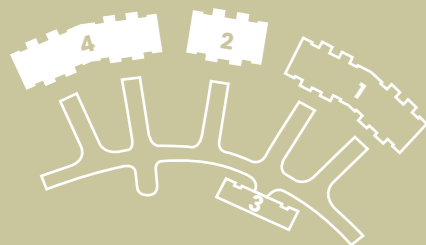


*Maximum Dimensions

AVAILABLE IN
BLOCK 2 & 4

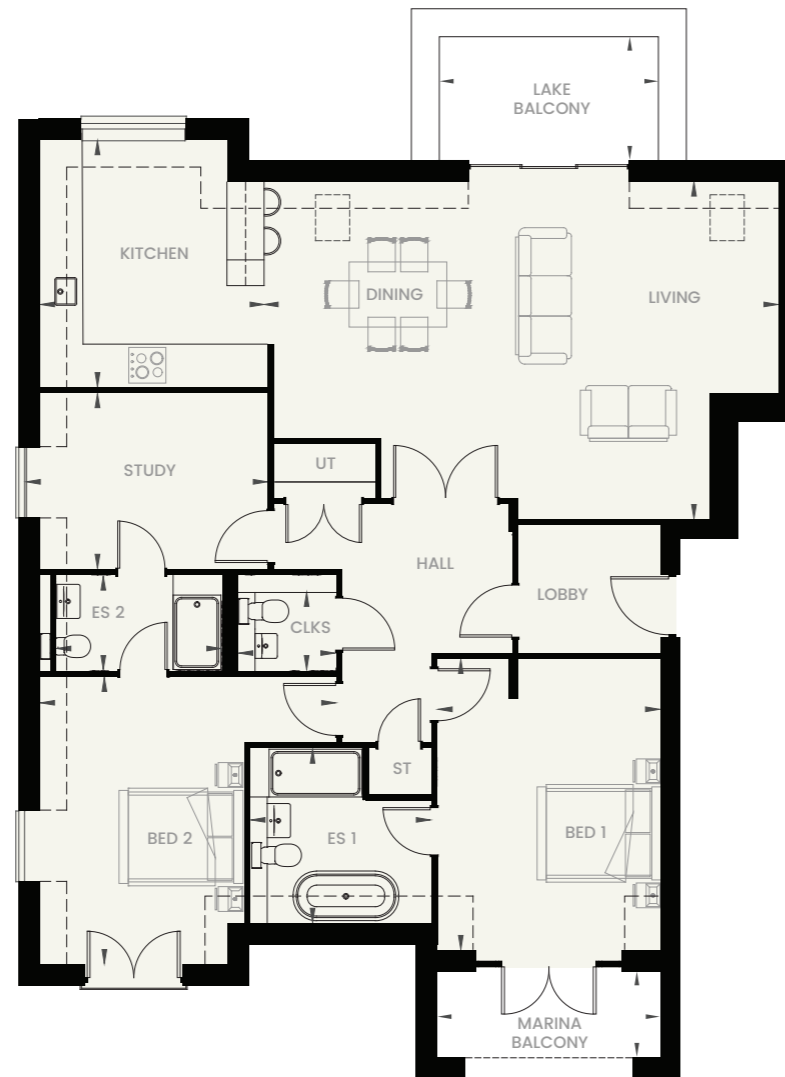
C3

Bedroom 1	3.57m x 4.67m 11' 9" x 15' 4"
En-suite 1	2.89m x 2.79m 9' 6" x 9' 2"
Bedroom 2	4.76m* x 4.61m 15' 7"* x 15' 2"
En-suite 2	2.64m x 1.51m 8' 8" x 4' 11"
Cloakroom	1.55m x 1.24m 5' 1" x 4' 1"
Study	3.88m* x 2.82m 12' 9"* x 9' 3"
Kitchen	3.61m x 3.96m 11' 10" x 13' 0"
Living / Dining	8.28m x 5.43m* 27' 2" x 17' 10"*
Balcony (Marina)	3.57m x 1.38m 11' 9" x 4' 6"
Balcony (Lake)	3.53m x 2.00m 11' 7" x 6' 7"
Total area =	134.71 sq.m 1450 sq.ft



PENTHOUSE

PLOTS 29, 30, 43 & 54



*Maximum Dimensions Apartments may be handed

PENTHOUSE

PLOTS 44 & 53

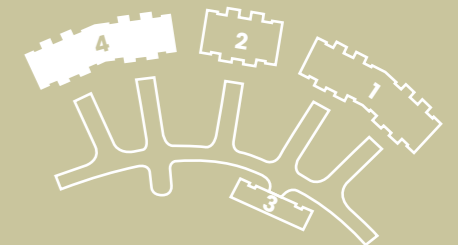


Apartments may be handed *Maximum Dimensions

AVAILABLE IN
BLOCK 4

C4

Bedroom 1	3.57m x 3.95m 11' 9" x 13' 0"
En-suite	3.14m x 1.97m 10' 4" x 6' 6"
Dressing room	3.29m x 1.42m 10' 10" x 4' 8"
Bedroom 2	4.07m* x 4.98m 13' 4"* x 16' 4"
En-suite 2	1.70m x 2.36m 5' 7" x 7' 9"
Cloakroom	1.33m x 1.36m 4' 4" x 4' 6"
Study	3.38m* x 4.18m 11' 1"* x 13' 9"
Kitchen	2.80m x 5.43m* 9' 2" x 17' 10"*
Living / Dining	6.55m* x 5.43m* 21' 6"* x 17' 10"*
Balcony (Marina)	3.57m x 1.38m 11' 9" x 4' 6"
Balcony (Lake)	3.53m x 2.00m 11' 7" x 6' 7"
Total area =	141.39 sq.m 1522 sq.ft





GateSide

AN IMPRESSIVE FAÇADE WHICH STANDS PROUD
COMPRISING OF 2 GROUND FLOOR & 2 FIRST FLOOR APARTMENTS

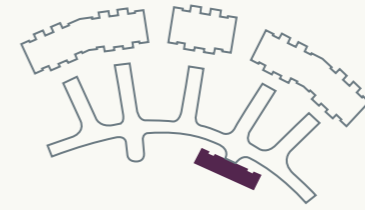


BLOCK THREE FRONT VIEW



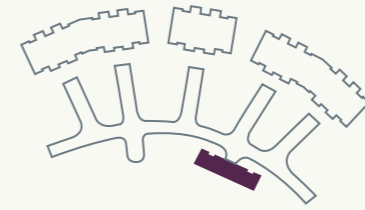
BLOCK THREE REAR VIEW

BlockThree
GROUND FLOOR



D1
PLOTS 31 & 32

BlockThree
FIRST FLOOR



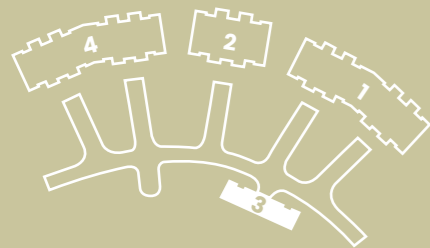
D2
PLOTS 33 & 34

AVAILABLE IN
BLOCK 3

D1

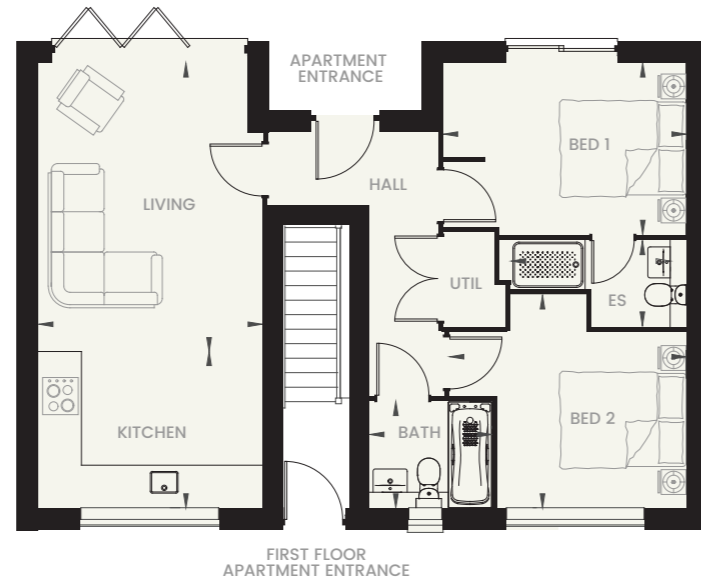
Bedroom 1	3.91m* x 2.76m 12' 10"* x 9' 1"
En-suite	2.81m* x 1.37m 9' 3"* x 4' 6"
Bedroom 2	3.81m* x 3.43m* 12' 6"* x 11' 3"*
Bathroom	1.96m x 1.71m* 6' 5" x 5' 7"*
Kitchen	3.60m x 2.52m 11' 10" x 8' 3"
Living	3.60m x 4.65m 11' 10" x 15' 3"

Total area = 63.73 sq.m
686 sq.ft

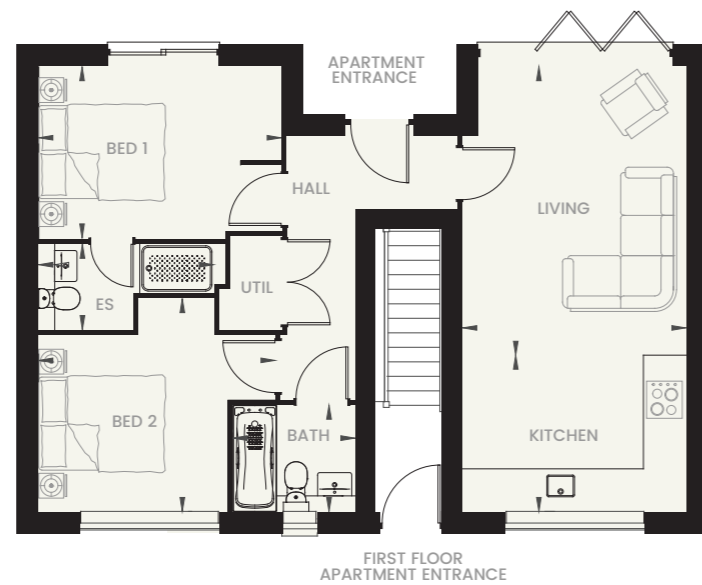


*Maximum Dimensions

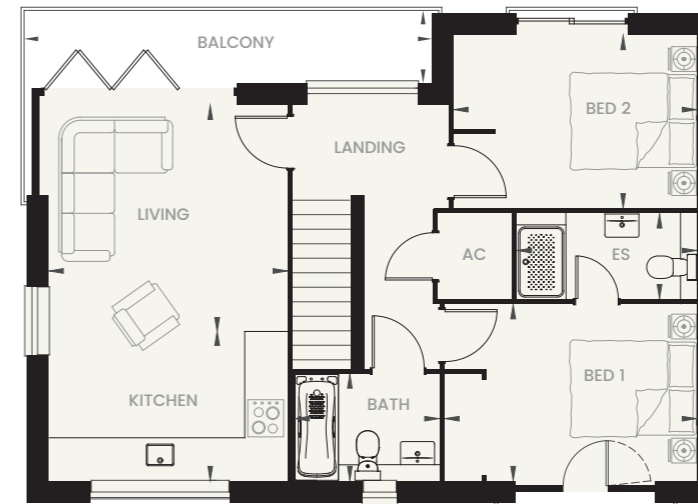
GROUND FLOOR OPTIONS PLOT 31



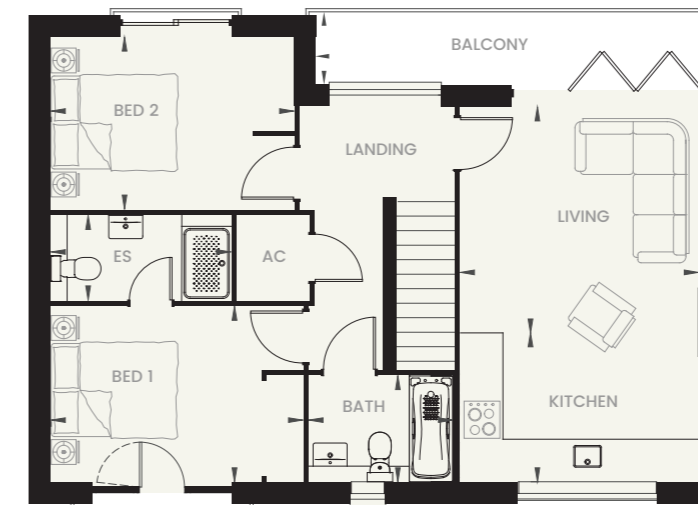
PLOT 32



FIRST FLOOR OPTIONS PLOT 33



PLOT 34



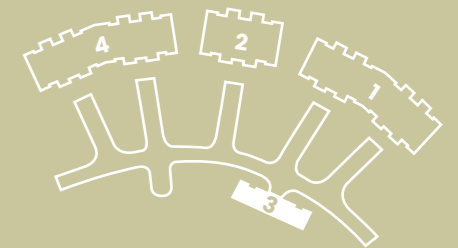
*Maximum Dimensions

AVAILABLE IN
BLOCK 3

D2

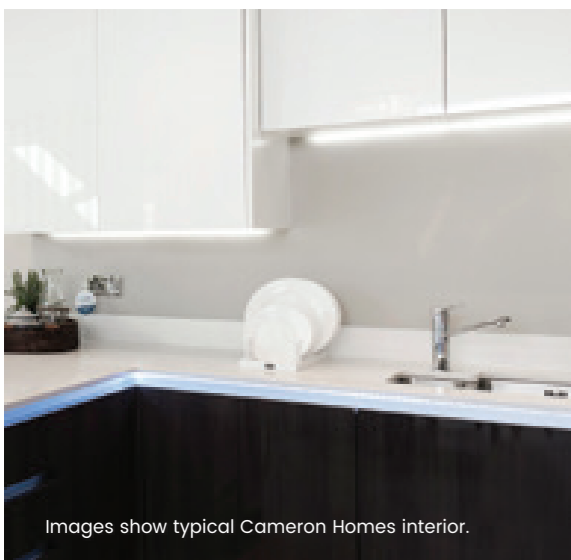
Bedroom 1	4.05m* x 2.83m 13' 4"* x 9' 4"
En-suite	2.89m x 1.36m 9' 6" x 4' 6"
Bedroom 2	3.91m* x 2.77m 12' 10"* x 9' 1"
Bathroom	2.31m x 1.71m 7' 7" x 5' 7"
Kitchen	3.83m x 2.40m 12' 7" x 7' 11"
Living	3.83m x 3.64m 12' 7" x 12' 0"
Balcony	6.59m x 1.19m 21' 7" x 3' 11"

Total area = 69.03 sq.m
743 sq.ft





Enjoy
the finer side
of life



Images show typical Cameron Homes interior.

Finer Side

The detail below outlines the specification that comes as standard in our ground and first floor apartments. Our highest specification (shown in the right hand column) comes as standard in all Penthouse suites. Selected upgrade packages are available to the standard specification. Please see separate options packages for details.

STANDARD SPECIFICATION

KITCHEN

- Contemporary designed kitchen with choice of doors
- 20mm acrylic solid surface worktops
- Single built-in-oven
- 4 zone ceramic hob
- Integrated washer / dryer (A type apartments only)
- Stainless steel sink with chrome deck mixer tap
- Integrated fridge, freezer and slimline dishwasher
- Built in extractor fan

BATHROOM

- Chrome basin mixers / bath filler mixer
- Thermostatic shower with chrome fixed and adjustable shower heads

PLUMBING & HEATING

- Worcester Bosch gas combi-boiler
- Underfloor heating
- Plumbing for washing machine

WALLS & FLOORING

- Choice of Porcelanosa wall & floor tiling
- MDF primed door linings, skirting, architrave & window boards
- Choice of standard coloured wall painting

INTERNAL & EXTERNAL DOORS

- PVCu sliding doors & French doors
- Chrome door furniture
- Contemporary panelled white internal doors
- Sliding wardrobe doors in master bedroom

ENERGY EFFICIENCY

- PVCu double glazed windows
- Energy saving pendant lighting

ELECTRICAL

- White switches & sockets
- BT & Sky / TV points
- Digital aerial TV system
- Shaver point in en-suite
- 240v 'white' down lighters (kitchen only)

SAFETY & SECURITY

- 3 point locking system to external doors
- Interlinked 240v smoke detectors
- MEV ventilation system

A PIR alarm system is optional to both specifications.

PENTHOUSE SPECIFICATION

KITCHEN

- 'Handle-less' contemporary style with finger strip lighting - luxe gloss range doors
- 20mm unistone work surface with 100mm upstands in kitchen - 40mm laminate in utility
- Single built-in multi function oven
- Compact combi oven with microwave and warming drawer
- 30cm wine cooler
- Full sized integrated dishwasher
- LED lighting to under units and plinths
- POP UP socket with USB connectivity

BATHROOM

- Quartz digital concealed shower with fixed & adjustable head in en suite 1

INTERNAL & EXTERNAL DOORS

- Contemporary panelled prefinished oak internal doors
- Aluminium profiled frames on wardrobes

WALLS & FLOORING

- Upgraded Porcelanosa wall & floor tiling

ELECTRICAL

- Chrome high level switches & sockets
- Downlighters to en suites and cloaks

PLUMBING & HEATING

- Electric chrome ladder style towel rails in en suite 1

SAFETY & SECURITY

- MEV ventilation system



Life in
the heart
of the country

Near Side

AT YOUR NEW HOME

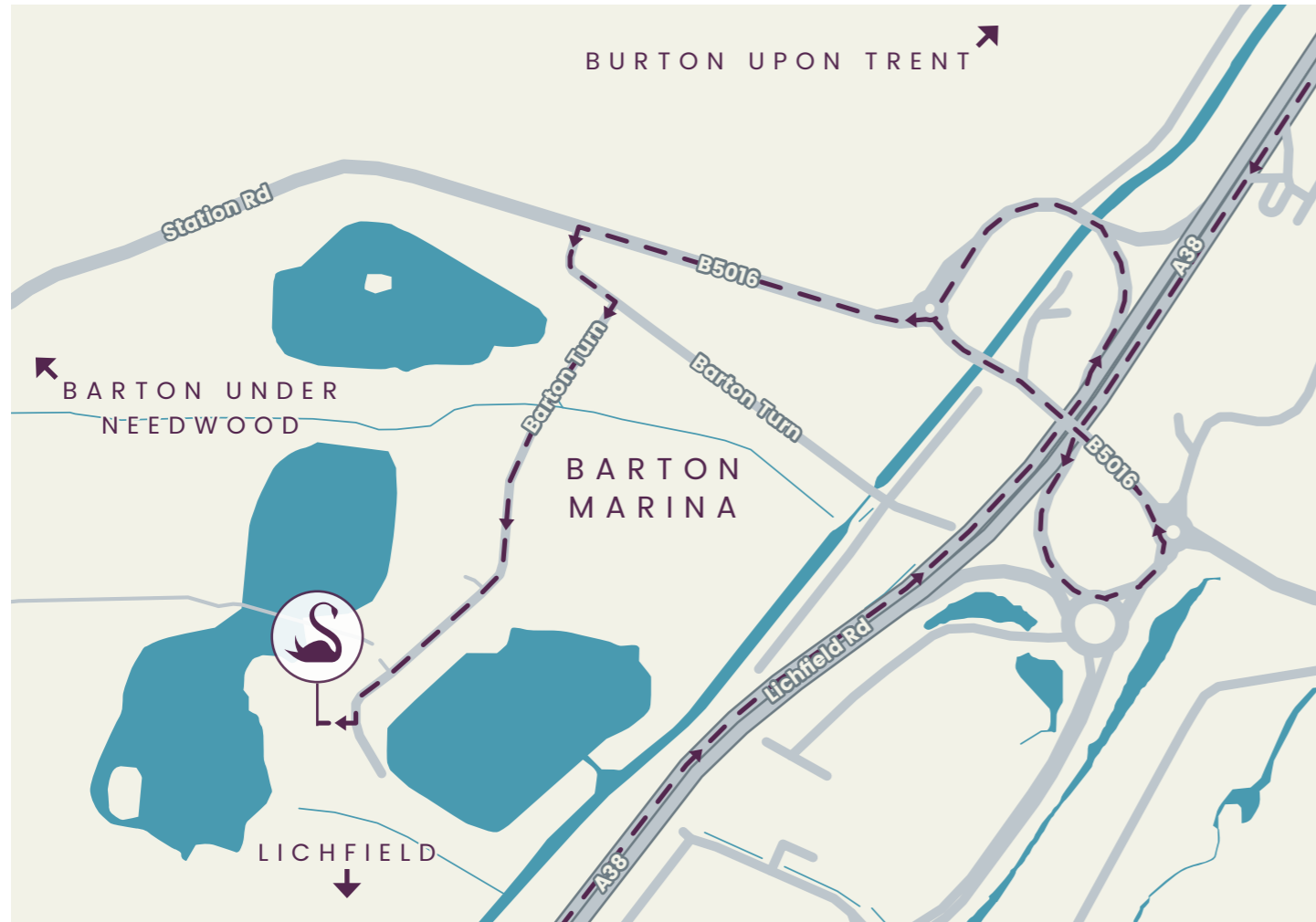
Beautiful setting

Described as the jewel of the Midlands, Barton Marina more than lives up to its reputation. Attractive moorings are home to colourful boats and barges, while the waterfront buzzes with visitors to its welcoming bars, cafes, restaurants and independent shops, including a delightful delicatessen. With the historic village of Barton under Needwood within walking distance everyday amenities such as a library, pubs and a stunning church are also at hand.

Lots to explore

Surrounded by lots of quaint villages, Barton Marina itself offers a wonderful lifestyle – set in an area rich in natural beauty, and the home of fabulous walks around the lakes and woodlands.

If you're looking for shopping centres, theatres and more then the nearby cities of Birmingham, Lichfield and Burton upon Trent are just a short journey away.



Coming from the North?

From the A38 South take the "Barton-under-Needwood" turn-off. Follow signs to "Barton-under-Needwood" over 3 roundabouts until you see a left turn to Barton Marina. From here follow directions to "Lakeside Apartments"

Coming from the South?

From the A38 North take the "Barton-under-Needwood" turn-off. Turn right at the roundabout and next left towards Barton Marina. From here follow directions to "Lakeside Apartments"

Lakeside Apartments

Barton Marina,
Barton Turn,
Barton under Needwood,
Burton upon Trent,
DE13 8AS



Image shows typical Cameron Homes interior.



Cameron Quality

Understanding a home is more than just bricks and mortar is central to the Cameron belief.

We're with you every step of the way, offering honest advice, invaluable support and first class service. Our dedication to our customers and determination to continually raise our standards has been integral to our success.