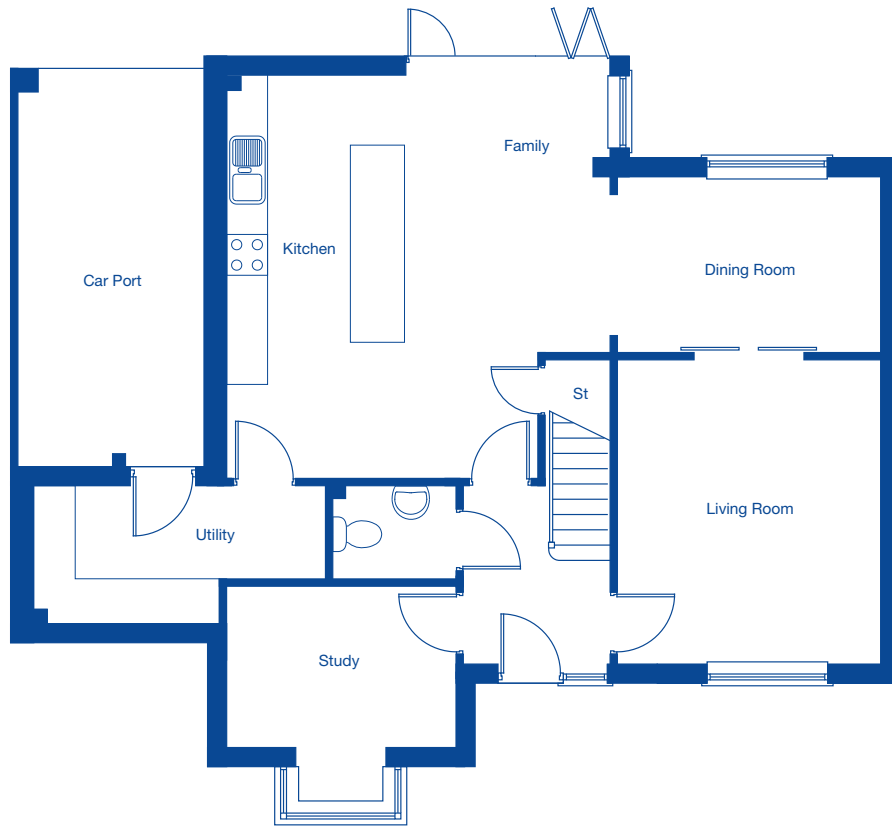


Newington Grange

Newington House – 4 bedroom detached home

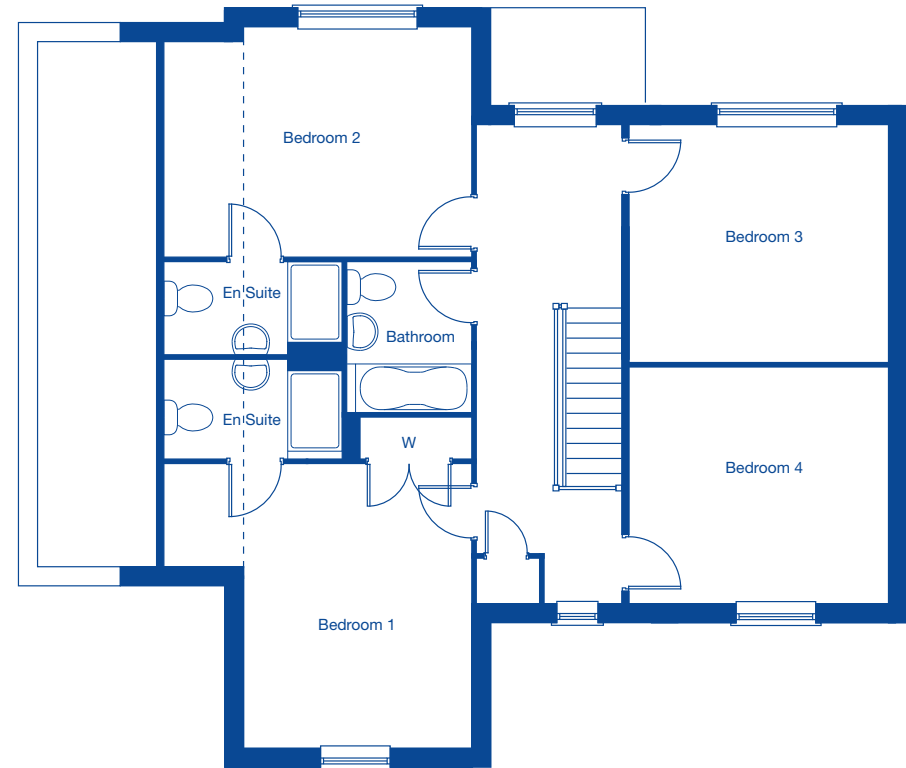


JONES
HOMES



Ground Floor

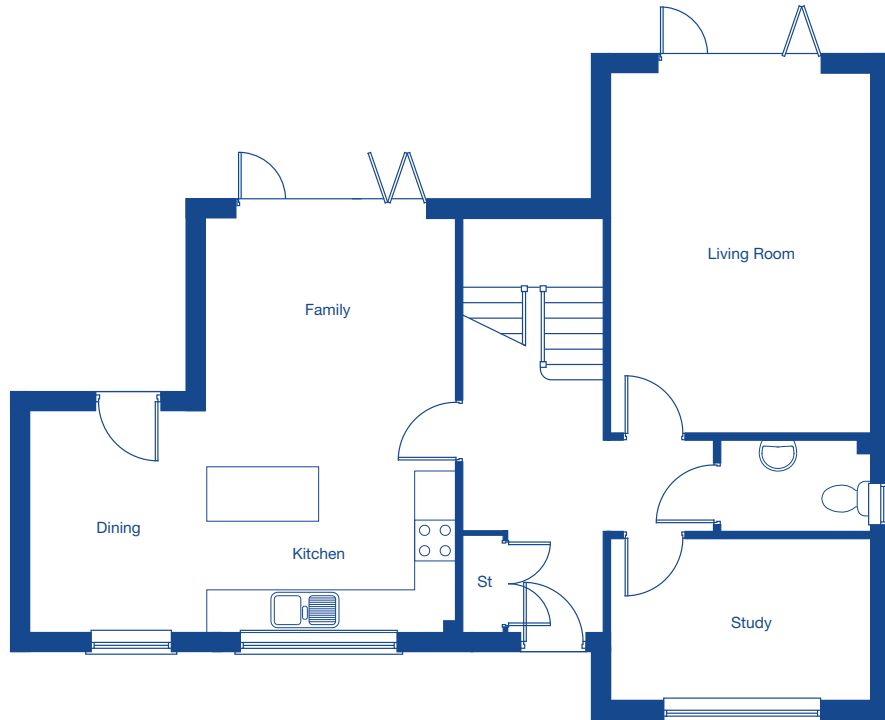
Living Room	4.34m x 3.79m	14'3" x 12'5"
Kitchen/Family/Dining	9.48m x 5.82m	31'1" x 19'1"
Study	3.29m x 2.29m	10'10" x 7'6"
Utility	4.20m x 1.94m	13'9" x 6'4"



First Floor

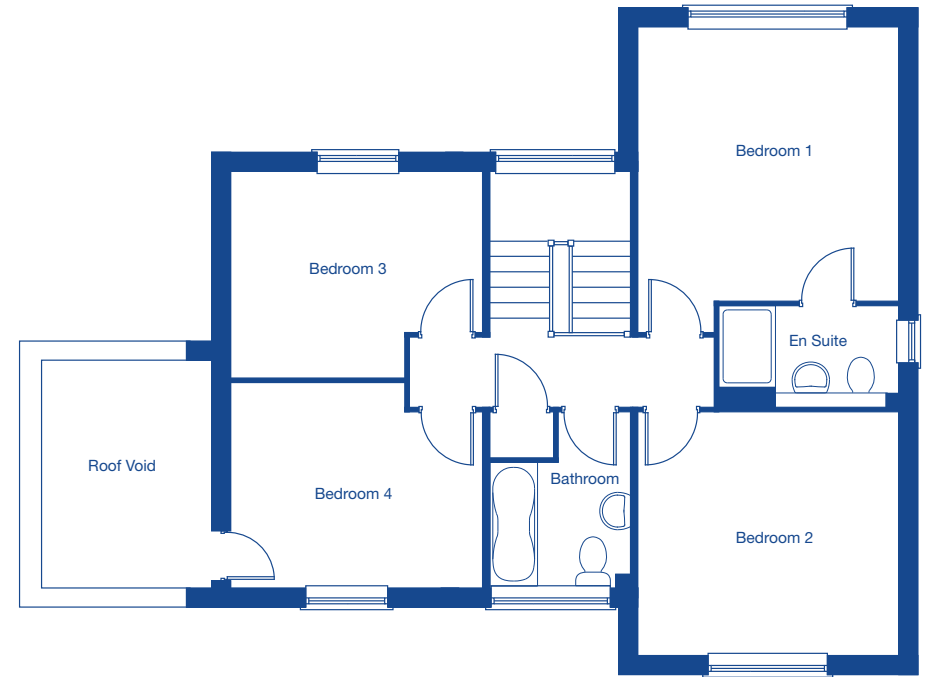
Bedroom 1	4.51m x 4.16m	14'10" x 13'8"
Bedroom 2	4.51m x 3.14m	14'10" x 10'4"
Bedroom 3	3.48m x 3.79m	11'5" x 12'5"
Bedroom 4	3.45m x 3.79m	11'4" x 12'5"





Ground Floor

Living Room	5.23m x 3.74m	17'2" x 12'3"
Kitchen/Family/Dining	6.20m x 5.99m	20'4" x 19'8"
Study	3.74m x 2.32m	12'3" x 7'7"



First Floor

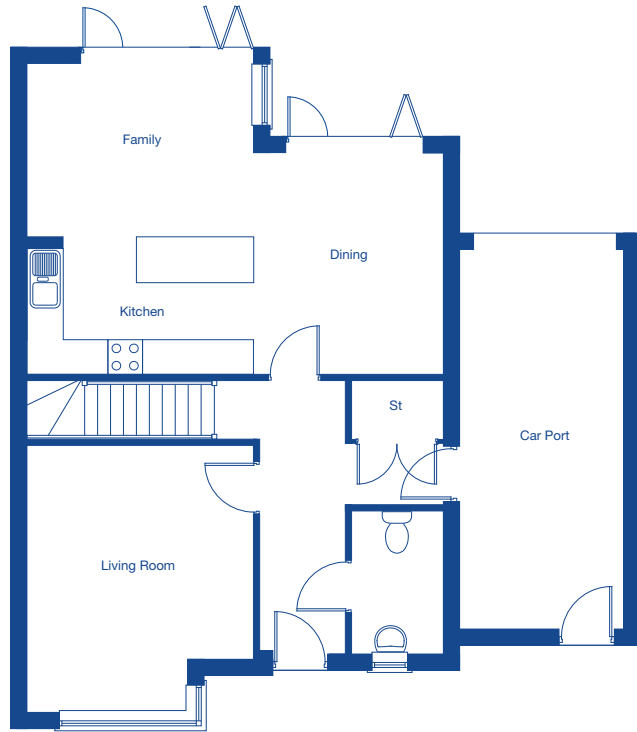
Bedroom 1	3.74m x 3.99m	12'3" x 13'1"
Bedroom 2	3.74m x 3.53m	12'3" x 11'7"
Bedroom 3	3.62m x 2.96m	11'11" x 9'9"
Bedroom 4	3.62m x 2.95m	11'11" x 9'8"

Newington Grange

The Kingsdown – 4 bedroom semi-detached home

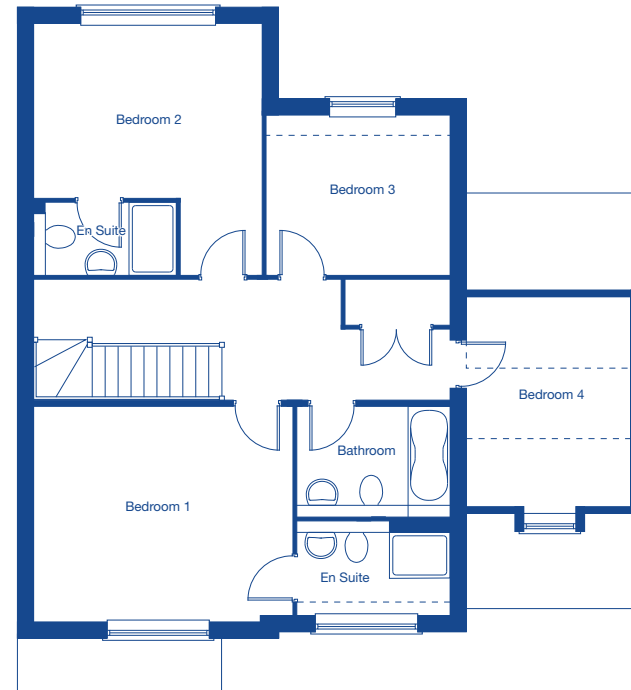


JONES
HOMES



Ground Floor

Living Room	4.56m x 3.85m	15'0" x 12'8"
Kitchen/Family/Dining	7.11m x 5.35m	23'4" x 17'7"



First Floor

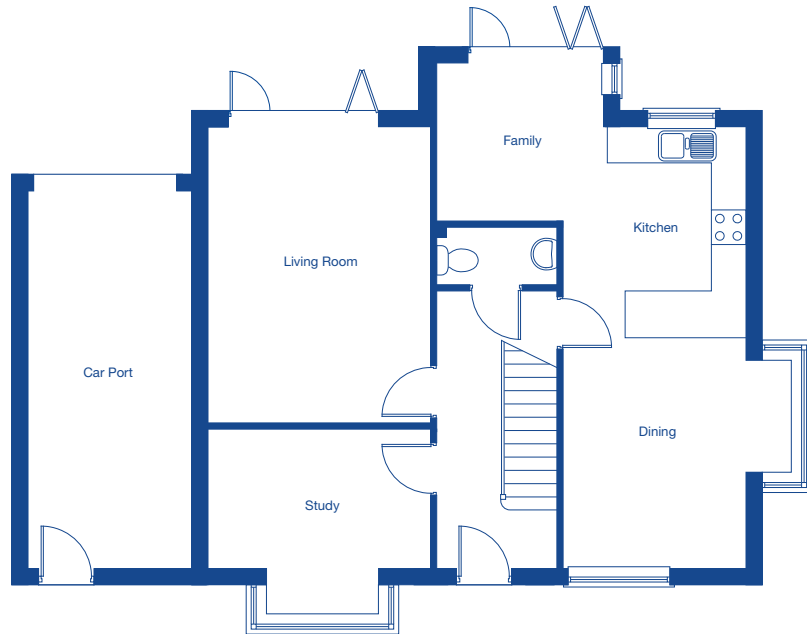
Bedroom 1	4.43m x 3.66m	14'6" x 12'0"
Bedroom 2	2.97m x 3.85m	9'9" x 12'8"
Bedroom 3	3.19m x 2.71m	10'6" x 8'11"
Bedroom 4	3.66m x 2.75m	12'0" x 9'0"

Newington Grange

The Highsted – 4 bedroom semi-detached home

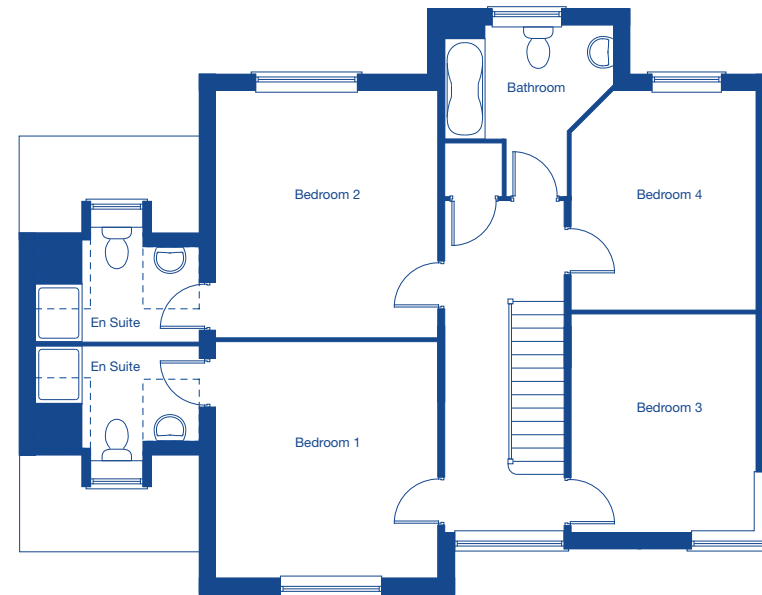


JONES
HOMES



Ground Floor

Living Room	5.06m x 3.79m	16'7" x 12'5"
Kitchen/Family/Dining	7.56m x 5.32m	24'10" x 17'5"
Study	3.79m x 2.35m	12'5" x 7'9"



First Floor

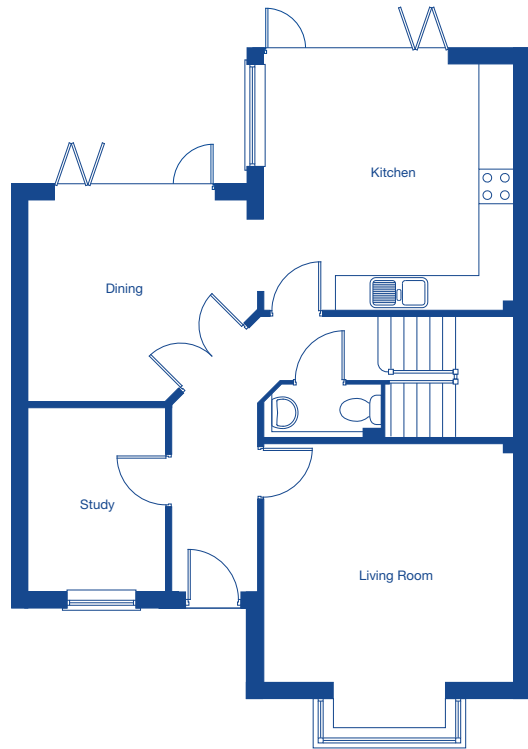
Bedroom 1	4.00m x 3.79m	13'1" x 12'5"
Bedroom 2	4.23m x 3.79m	13'11" x 12'5"
Bedroom 3	3.75m x 3.12m	12'4" x 10'3"
Bedroom 4	3.75m x 3.12m	12'4" x 10'3"

Newington Grange

The Hartlip – 4 bedroom end-mews home

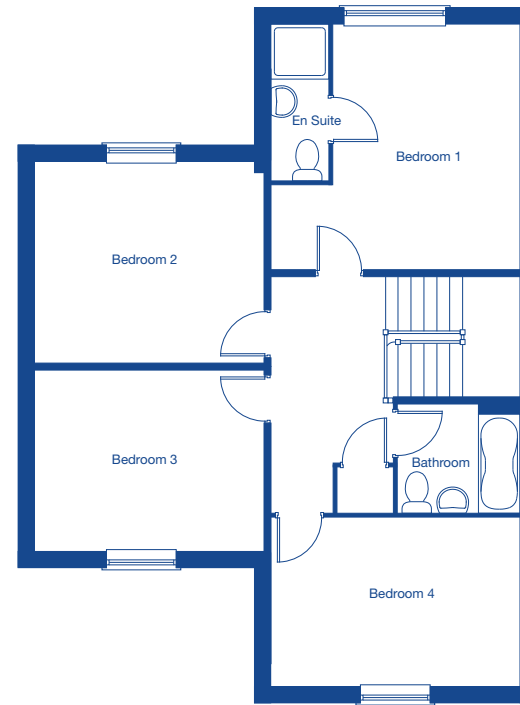


JONES
HOMES



Ground Floor

Living Room	4.05m x 4.29m	13'3" x 14'1"
Kitchen	4.20m x 4.29m	13'9" x 14'1"
Dining	3.44m x 3.78m	11'3" x 12'5"
Study	3.08m x 2.30m	10'1" x 7'7"



First Floor

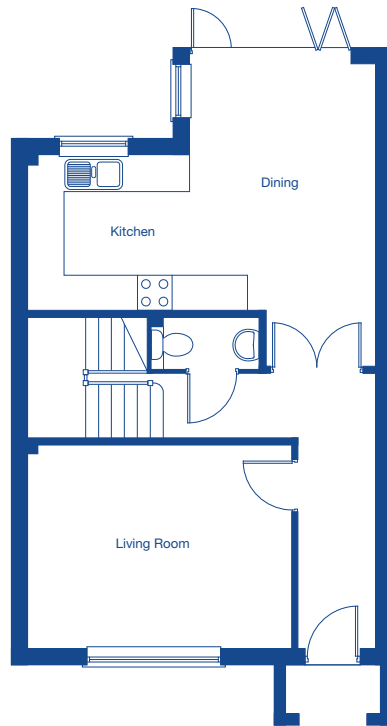
Bedroom 1	4.29m x 4.20m	14'1" x 13'9"
Bedroom 2	3.90m x 3.44m	12'10" x 11'3"
Bedroom 3	3.90m x 3.08m	12'10" x 10'1"
Bedroom 4	4.29m x 2.89m	14'1" x 9'6"

Newington Grange

The Tunstall – 3 bedroom mid-mews home

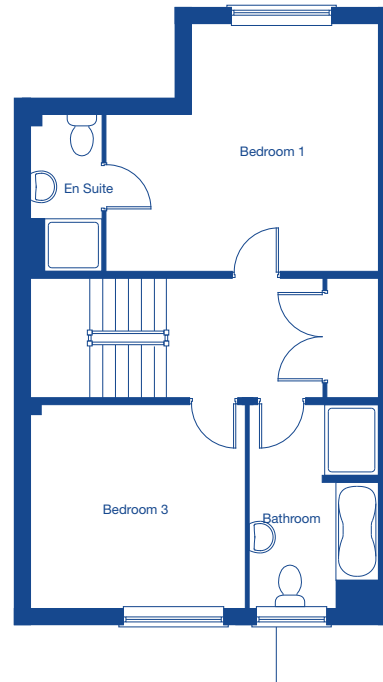


JONES
HOMES



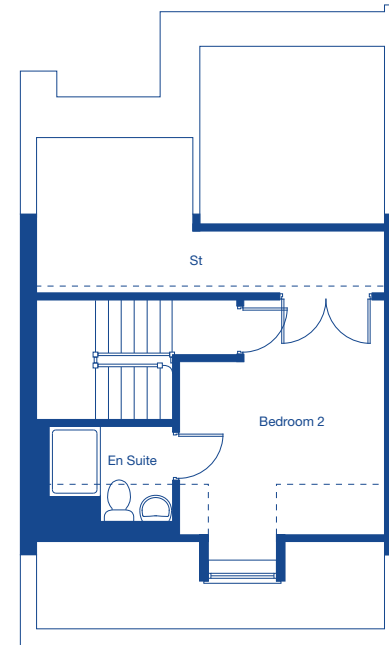
Ground Floor

Living Room	4.51m x 3.46m	14'10" x 11'4"
Kitchen/Dining	5.94m x 5.20m	19'6" x 17'0"



First Floor

Bedroom 1	4.67m x 4.23m	15'4" x 13'11"
Bedroom 3	3.46m x 3.67m	11'4" x 12'0"



Second Floor

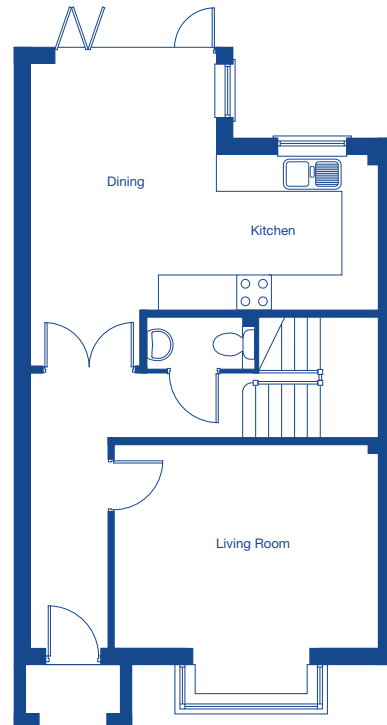
Bedroom 2	3.51m x 4.07m	11'6" x 13'4"
-----------	---------------	---------------

Newington Grange

The Farthing – 3 bedroom end-mews home

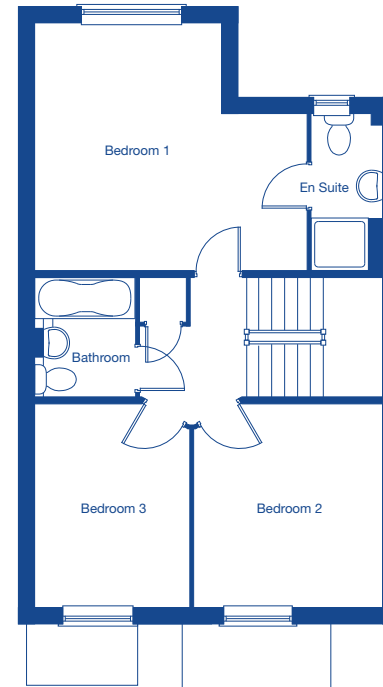


JONES
HOMES



Ground Floor

Living Room	3.46m x 4.52m	11'4" x 14'10"
Kitchen/Family/Dining	5.96m x 5.20m	19'7" x 17'0"



First Floor

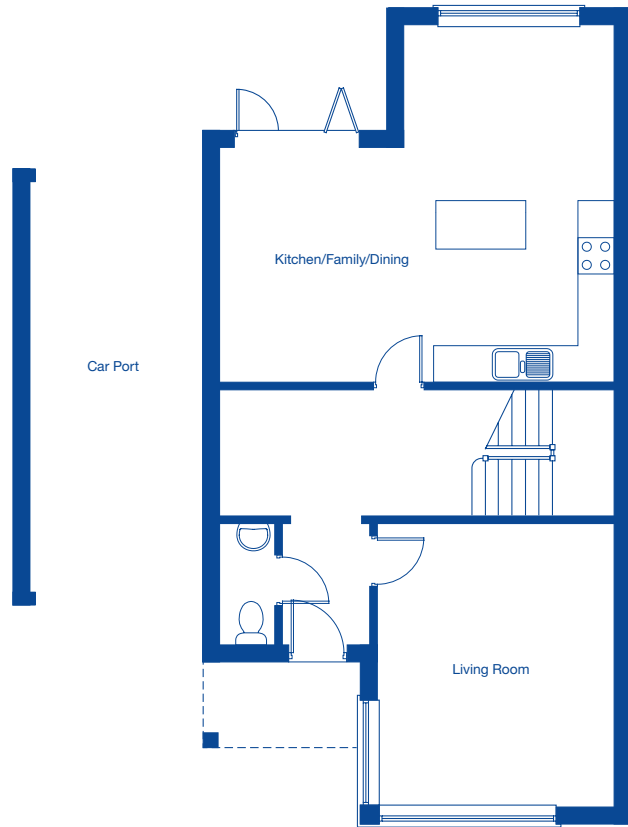
Bedroom 1	4.67m x 4.23m	15'4" x 13'11"
Bedroom 2	3.47m x 3.22m	11'5" x 10'7"
Bedroom 3	3.47m x 2.66m	11'5" x 8'9"

Newington Grange

The Kemsley – 4 bedroom end-mews home



JONES
HOMES



Ground Floor

Living Room	4.65m x 3.85m	15'3" x 12'8"
Kitchen/Family/Dining	6.44m x 5.85m	21'2" x 19'2"



First Floor

Bedroom 1	3.95m x 4.17m	12'11" x 13'8"
Bedroom 2	3.91m x 3.40m	12'10" x 11'2"
Bedroom 3	3.80m x 2.74m	12'6" x 9'0"
Bedroom 4	3.83m x 2.96m	12'7" x 9'9"

Newington Grange

The Borden – 3 bedroom mid-mews home

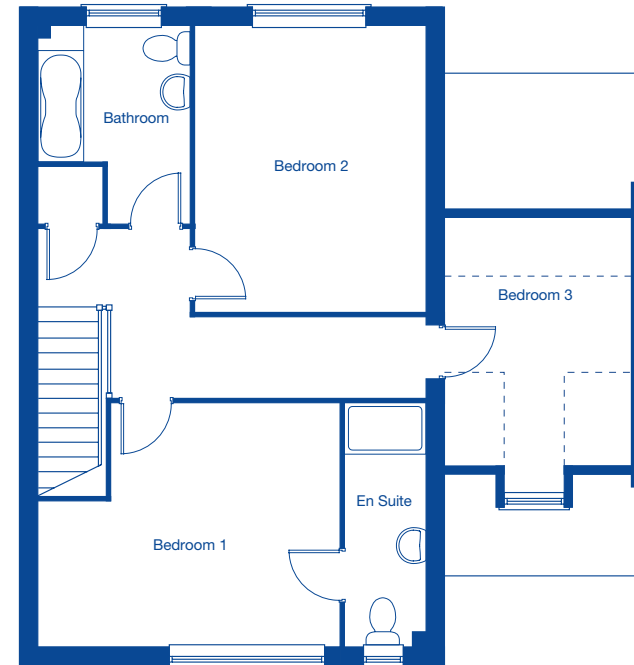


JONES
HOMES



Ground Floor

Living Room	4.31m x 3.66m	14'2" x 12'0"
Kitchen/Family/Dining	5.85m x 3.45m	19'2" x 11'4"

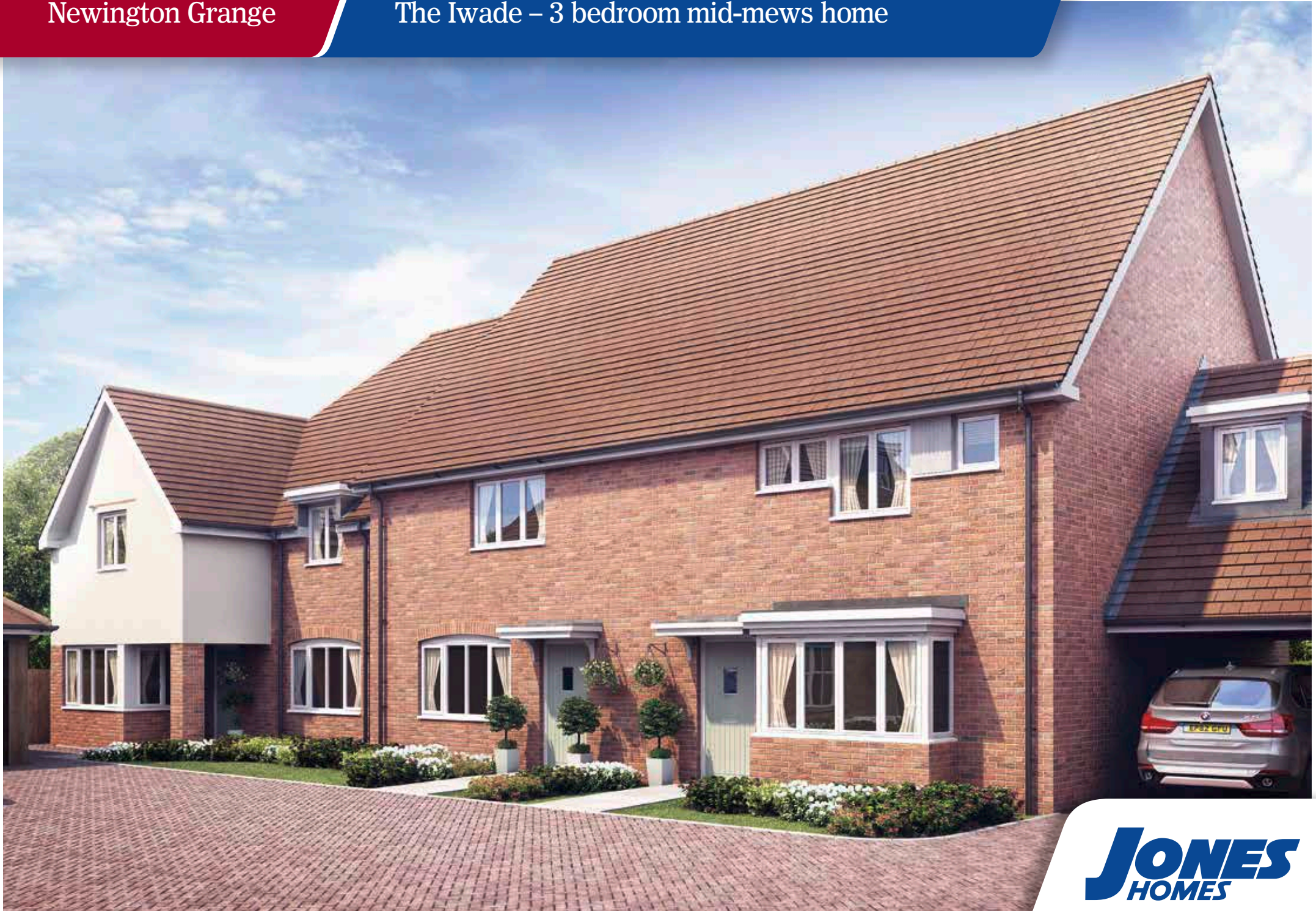


First Floor

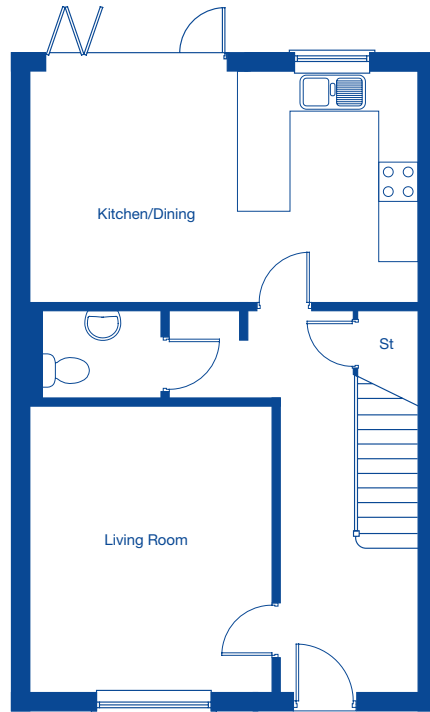
Bedroom 1	4.56m x 3.66m	15'0" x 12'0"
Bedroom 2	4.31m x 3.47m	14'2" x 11'5"
Bedroom 3	3.80m x 2.74m	12'6" x 9'0"

Newington Grange

The Iwade – 3 bedroom mid-mews home

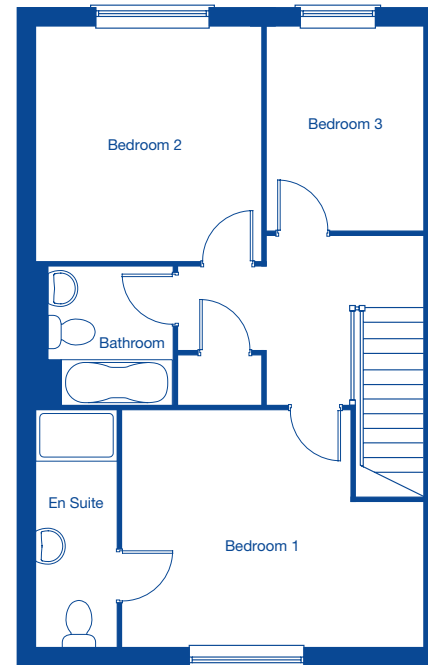


JONES
HOMES



Ground Floor

Living Room	4.32m x 3.65m	14'2" x 12'0"
Kitchen/Family/Dining	5.83m x 3.45m	19'2" x 11'4"



First Floor

Bedroom 1	4.56m x 3.56m	15'0" x 11'8"
Bedroom 2	3.53m x 3.41m	11'7" x 11'2"
Bedroom 3	3.06m x 2.35m	10'0" x 7'9"

Newington Grange

The Halstow – 4 bedroom end-mews home

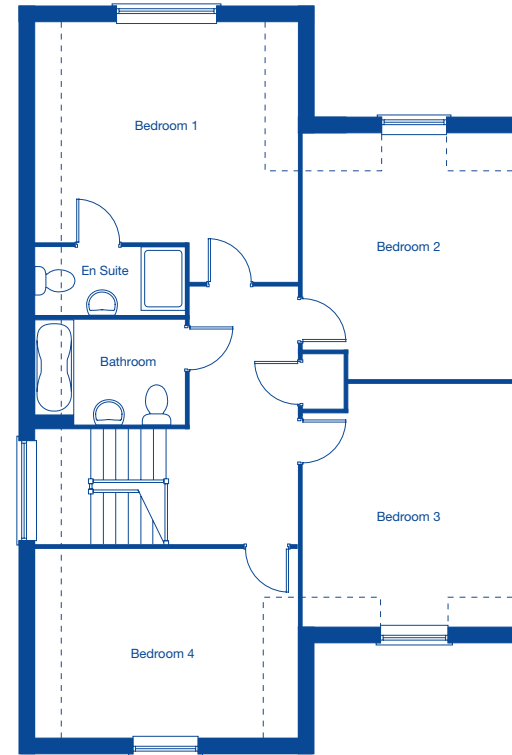


JONES
HOMES



Ground Floor

Living Room	4.92m x 4.35m	16'2" x 14'3"
Kitchen/Family/Dining	8.45m x 5.65m	27'9" x 18'6"



First Floor

Bedroom 1	4.62m x 4.64m	15'2" x 15'3"
Bedroom 2	4.35m x 3.74m	14'3" x 12'3"
Bedroom 3	4.26m x 3.74m	14'0" x 12'3"
Bedroom 4	4.64m x 3.35m	15'3" x 11'0"

Newington Grange

The Otterham – 4 bedroom semi-detached home



JONES
HOMES



Ground Floor

Living Room	4.53m x 3.80m	14'10" x 12'6"
Kitchen/Family/Dining	6.73m x 5.67m	22'1" x 18'7"



First Floor

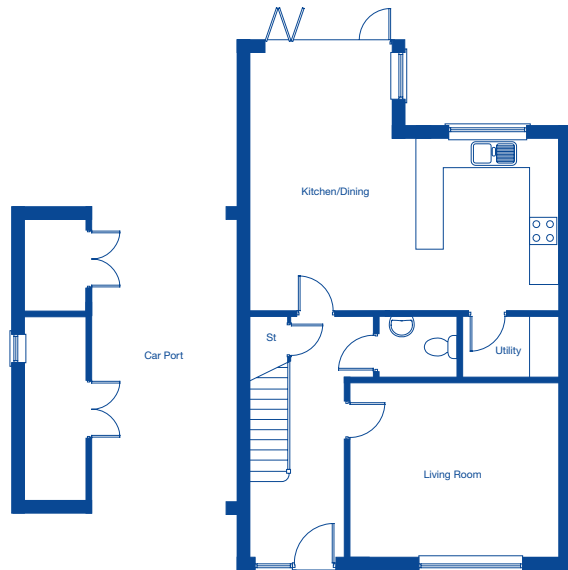
Bedroom 1	4.53m x 3.16m	14'10" x 10'4"
Bedroom 2	3.75m x 3.56m	12'4" x 11'8"
Bedroom 3	4.71m x 4.07m	15'5" x 13'4"
Bedroom 4	3.10m x 2.68m	10'2" x 8'10"

Newington Grange

The Upchurch – 5 bedroom semi-detached home

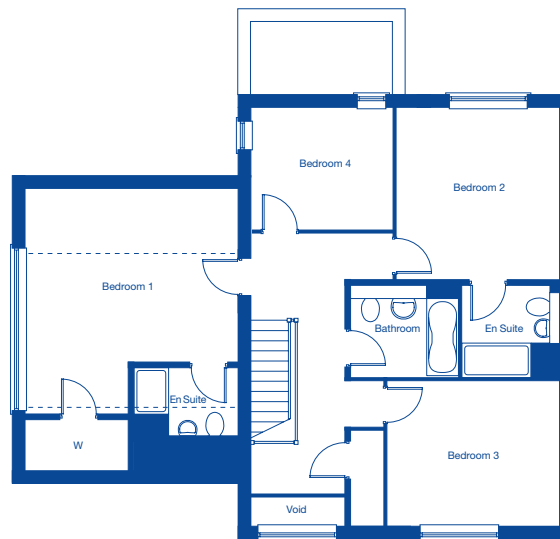


JONES
HOMES



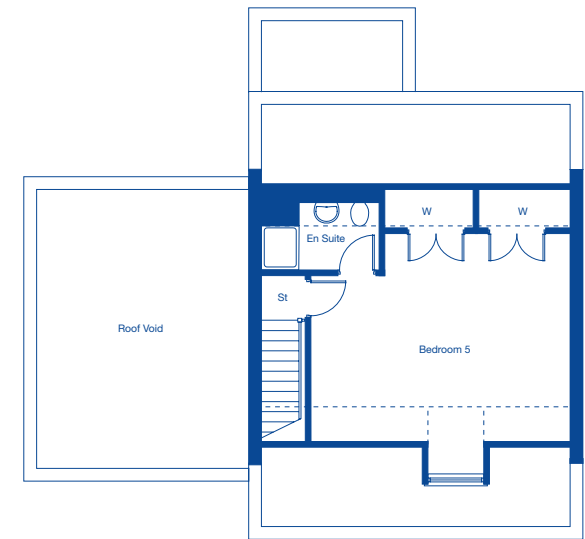
Ground Floor

Living Room	4.54m x 3.80m	14'11" x 12'6"
Kitchen/Dining	6.73m x 5.67m	22'1" x 18'7"
Utility	2.05m x 1.30m	6'9" x 4'3"



First Floor

Bedroom 1	4.96m x 4.55m	16'3" x 14'11"
Bedroom 2	3.75m x 3.56m	12'4" x 11'8"
Bedroom 3	3.76m x 3.14m	12'4" x 10'4"
Bedroom 4	3.10m x 2.68m	10'2" x 8'10"



Second Floor

Bedroom 5	5.66m x 4.12m	18'7" x 13'6"
-----------	---------------	---------------