

The Tower Apartments

BERMONDSEY WORKS

London SE16



FORM &
FUNCTION



**AN
ARCHITECTURAL
STATEMENT**

AN ICONIC BUILDING INSPIRED
BY FORM, COLOUR AND MOVEMENT.
BERMONDSEY WORKS IS AS
FUNCTIONAL AS IT IS INSPIRATIONAL.

Computer generated image of Bermondsey Works with The City and Canary Wharf in the background.



A BUILDING THAT LIVES WITH YOU

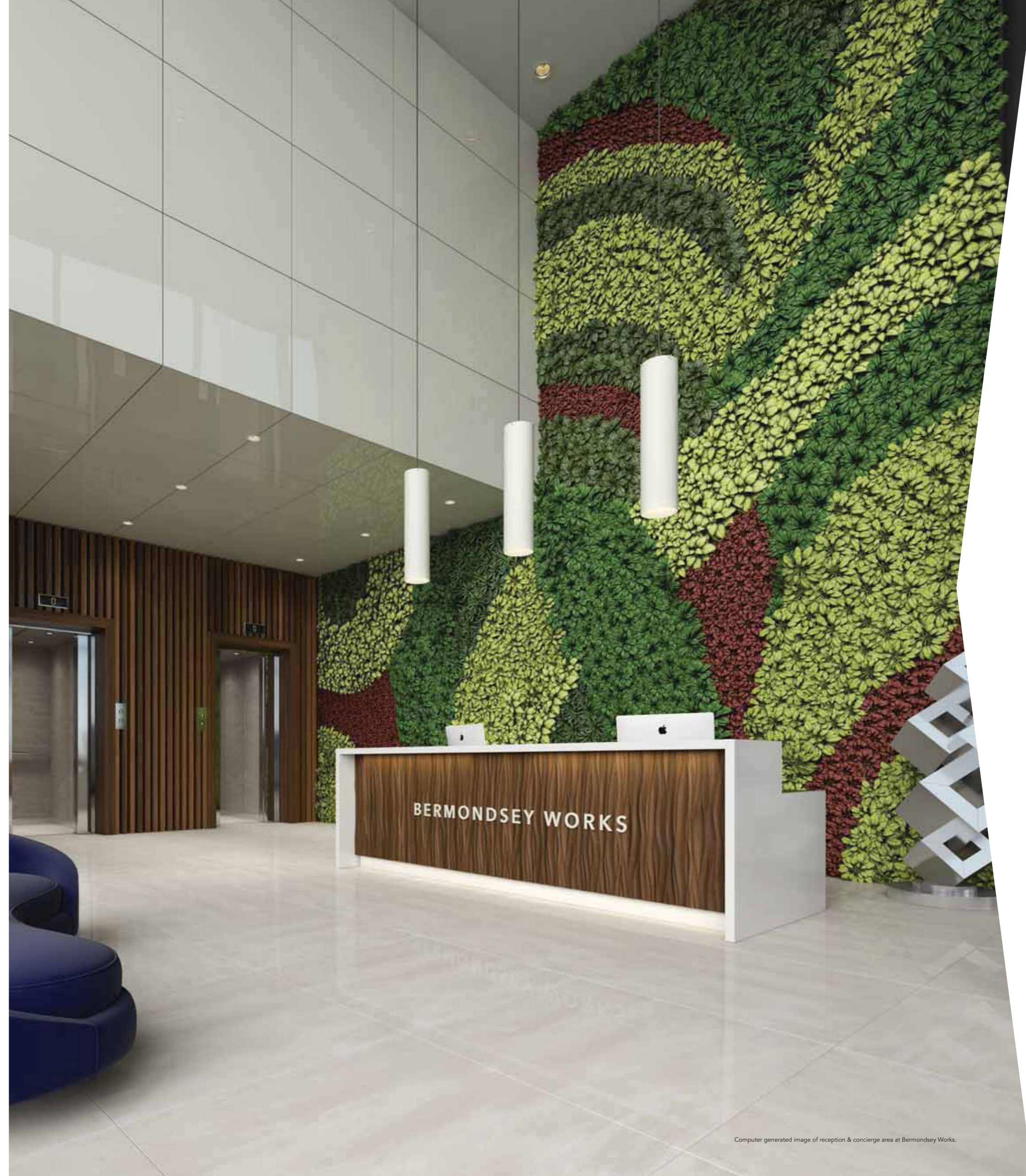
STYLISH AND SOPHISTICATED, INSIDE AND OUT

Designed to complement an active city lifestyle, Bermondsey Works, located above a Primary School and Sixth Form Academy, offers apartments across a striking 18-storey tower and villas that have everything required for urban living including 24-hour concierge service, private residents' gymnasium and landscaped outside spaces – all you could need for life in the city.

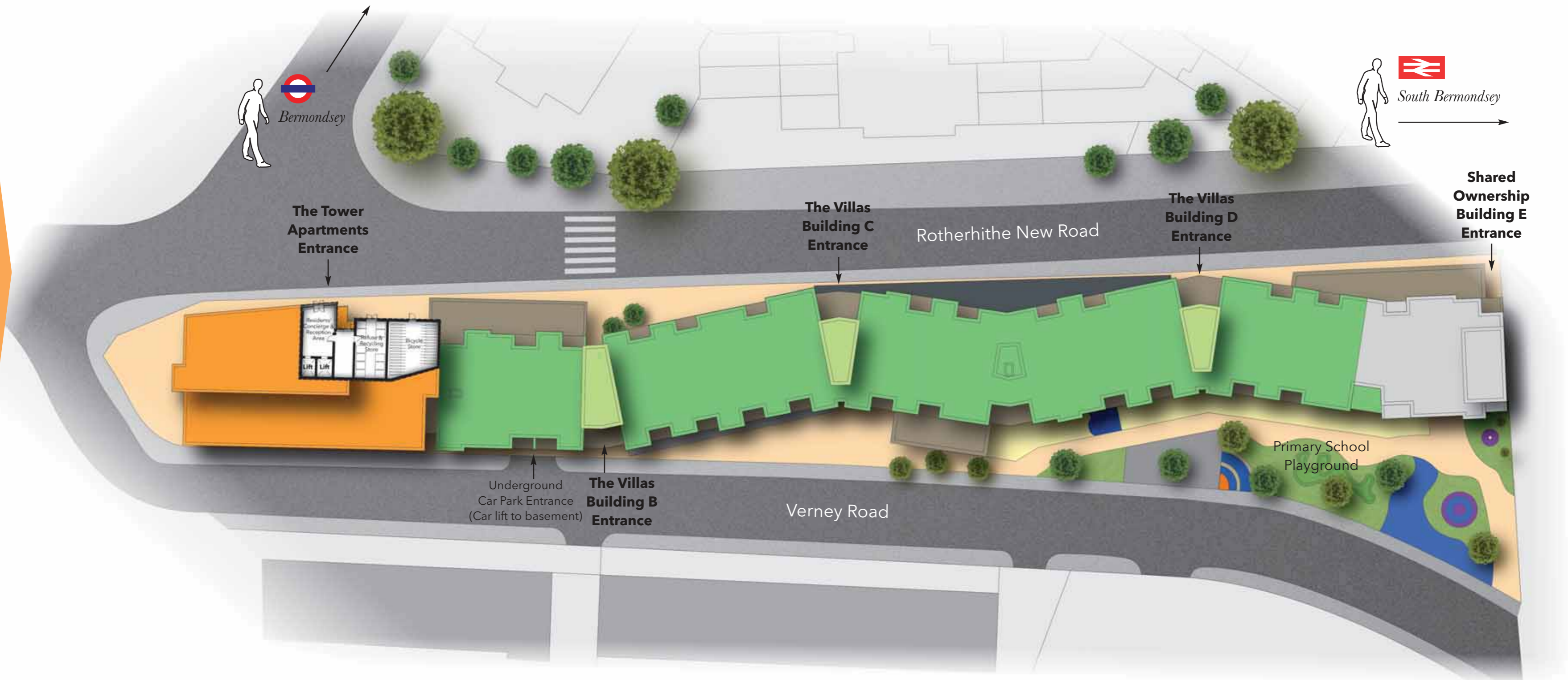
AT BERMONDSEY WORKS
A SPACIOUS RECEPTION
& 24-HOUR CONCIERGE
SERVICE WELCOMES
YOU HOME EVERYDAY

COME HOME TO STYLISH LIVING

CONVENIENCE & SECURITY



OVERALL DEVELOPMENT LAYOUT



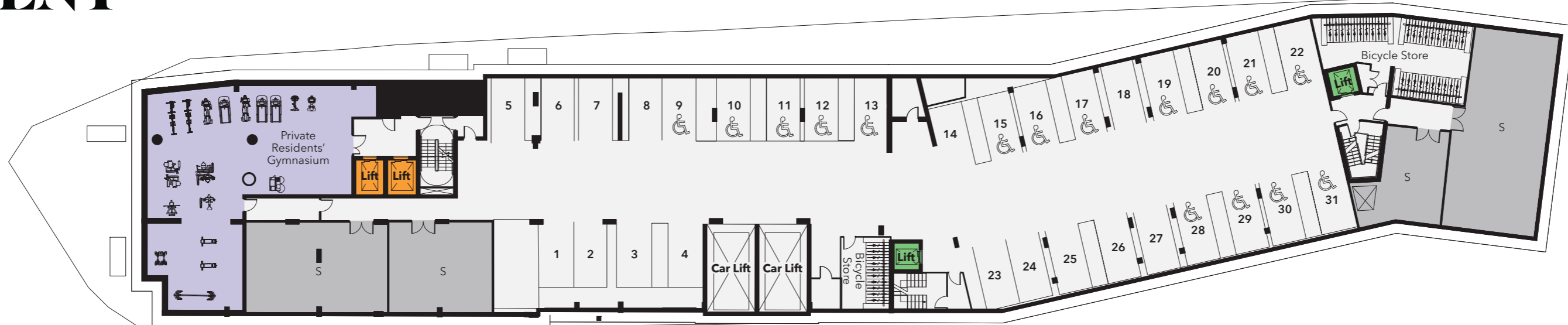
- The Tower Apartments
- The Villas
- Shared Ownership

Fitter. Healthier. Happier.

EXPERIENCE THE LUXURY AND CONVENIENCE OF A WELL-EQUIPPED, PRIVATE RESIDENTS' GYMNASIUM. MEETING THE NEEDS OF AN ACTIVE, CITY LIFESTYLE.



BASEMENT PLAN



- Access to The Tower Apartments
- Access to The Villas

FLOOR 3

The Tower Apartments A01, A02, A03, A04, A05 & A06

View towards The City

View towards The Shard and Westminster

View towards Stratford and East London



View towards Westminster



- 1 BEDROOM APARTMENT
- 2 BEDROOM APARTMENT
- 3 BEDROOM APARTMENT

View towards South London

View towards South London

View towards Greenwich

APARTMENT A01

<i>3 Bedroom Apartment</i>		
KITCHEN/LIVING/DINING	7.52m x 6.16m	24'8" x 20'3"
BEDROOM 1	5.24m x 2.80m	17'2" x 9'2"
BEDROOM 2	4.09m x 2.86m	13'5" x 9'5"
BEDROOM 3	4.09m x 2.69m	13'5" x 8'10"
TOTAL AREA	98.1 sq m	1056 sq ft

APARTMENT A02

<i>2 Bedroom Apartment</i>		
KITCHEN/LIVING/DINING	6.64m x 5.42m	21'9" x 17'9"
BEDROOM 1	5.17m x 3.20m	17'0" x 10'6"
BEDROOM 2	3.71m x 3.29m	12'2" x 10'9"
TOTAL AREA	83.7 sq m	901 sq ft

APARTMENT A03

<i>1 Bedroom Apartment</i>		
KITCHEN/LIVING/DINING	6.94m x 4.35m	22'9" x 14'3"
BEDROOM	4.18m x 3.10m	13'9" x 10'2"
TOTAL AREA	52.5 sq m	565 sq ft

APARTMENT A04

<i>2 Bedroom Apartment</i>		
KITCHEN/LIVING/DINING	6.94m x 4.54m	22'9" x 14'11"
BEDROOM 1	4.99m x 3.30m	16'5" x 10'10"
BEDROOM 2	3.48m x 3.07m	11'5" x 10'1"
TOTAL AREA	72.7 sq m	783 sq ft

APARTMENT A05

<i>3 Bedroom Apartment</i>		
KITCHEN/LIVING/DINING	5.75m x 5.33m	18'10" x 17'6"
BEDROOM 1	3.78m x 3.49m	12'5" x 11'5"
BEDROOM 2	4.10m x 3.32m	13'5" x 10'11"
BEDROOM 3	3.63m x 2.96m	11'11" x 9'8"
TOTAL AREA	95.2 sq m	1025 sq ft

APARTMENT A06

<i>2 Bedroom Apartment</i>		
KITCHEN/LIVING/DINING	6.78m x 4.49m	22'3" x 14'9"
BEDROOM 1	4.44m x 2.89m	14'7" x 9'6"
BEDROOM 2	3.64m x 2.70m	11'11" x 8'10"
TOTAL AREA	71.0 sq m	764 sq ft

The dimensions given are accurate to within plus or minus two inches (50mm) from floor level and include wardrobe spaces where applicable. ◀▶ Indicates where measurements have been taken from. They are not intended to be used for carpet sizes, appliance space or items of furniture. Views shown are indicative and are for orientation purposes. The information is for general guidance only. S = Services

FLOOR 4

The Tower Apartments A07, A08, A09, A10, A11 & A12

View towards The City

View towards The Shard and Westminster

View towards Stratford and East London



View towards Westminster



View towards South London

View towards South London

View towards Greenwich

- 1 BEDROOM APARTMENT
- 2 BEDROOM APARTMENT
- 3 BEDROOM APARTMENT

APARTMENT A07

3 Bedroom Apartment

KITCHEN/LIVING/DINING	7.52m x 6.16m	24'8" x 20'3"
BEDROOM 1	5.24m x 2.80m	17'2" x 9'2"
BEDROOM 2	4.09m x 2.86m	13'5" x 9'5"
BEDROOM 3	4.09m x 2.69m	13'5" x 8'10"
TOTAL AREA	98.1 sq m	1056 sq ft

APARTMENT A08

2 Bedroom Apartment

KITCHEN/LIVING/DINING	6.64m x 5.42m	21'9" x 17'9"
BEDROOM 1	5.37m x 3.20m	17'7" x 10'6"
BEDROOM 2	3.71m x 3.29m	12'2" x 10'9"
TOTAL AREA	83.7 sq m	901 sq ft

APARTMENT A09

1 Bedroom Apartment

KITCHEN/LIVING/DINING	6.94m x 4.35m	22'9" x 14'3"
BEDROOM	4.18m x 3.10m	13'9" x 10'2"
TOTAL AREA	52.5 sq m	565 sq ft

APARTMENT A10

2 Bedroom Apartment

KITCHEN/LIVING/DINING	6.94m x 4.54m	22'9" x 14'11"
BEDROOM 1	4.99m x 3.30m	16'5" x 10'10"
BEDROOM 2	3.48m x 3.07m	11'5" x 10'1"
TOTAL AREA	72.7 sq m	783 sq ft

APARTMENT A11

3 Bedroom Apartment

KITCHEN/LIVING/DINING	7.20m x 5.33m	23'7" x 17'6"
BEDROOM 1	3.79m x 3.49m	12'5" x 11'5"
BEDROOM 2	4.47m x 2.96m	14'8" x 9'9"
BEDROOM 3	3.63m x 2.65m	11'11" x 8'8"
TOTAL AREA	95.7 sq m	1030 sq ft

APARTMENT A12

2 Bedroom Apartment

KITCHEN/LIVING/DINING	6.78m x 4.49m	22'3" x 14'9"
BEDROOM 1	4.44m x 2.89m	14'7" x 9'6"
BEDROOM 2	3.64m x 2.70m	11'11" x 8'10"
TOTAL AREA	71.0 sq m	764 sq ft

The dimensions given are accurate to within plus or minus two inches (50mm) from floor level and include wardrobe spaces where applicable. ◀▶ Indicates where measurements have been taken from. They are not intended to be used for carpet sizes, appliance space or items of furniture. Views shown are indicative and are for orientation purposes. The information is for general guidance only. S = Services

FLOOR 5

The Tower Apartments A13, A14, A15, A16, A17 & A18

View towards The City

View towards The Shard and Westminster

View towards Stratford and East London



View towards Westminster



- 1 BEDROOM APARTMENT
- 2 BEDROOM APARTMENT
- 3 BEDROOM APARTMENT

View towards South London

View towards South London

View towards Greenwich

APARTMENT A13

3 Bedroom Apartment

KITCHEN/LIVING/DINING	7.52m x 6.16m	24'8" x 20'3"
BEDROOM 1	5.24m x 2.80m	17'2" x 9'2"
BEDROOM 2	4.09m x 2.86m	13'5" x 9'5"
BEDROOM 3	4.09m x 2.69m	13'5" x 8'10"
TOTAL AREA	98.1 sq m	1056 sq ft

APARTMENT A14

2 Bedroom Apartment

KITCHEN/LIVING/DINING	6.64m x 5.42m	21'9" x 17'9"
BEDROOM 1	5.37m x 3.20m	17'7" x 10'6"
BEDROOM 2	3.71m x 3.29m	12'2" x 10'9"
TOTAL AREA	83.7 sq m	901 sq ft

APARTMENT A15

1 Bedroom Apartment

KITCHEN/LIVING/DINING	6.94m x 4.35m	22'9" x 14'3"
BEDROOM	4.18m x 3.10m	13'9" x 10'2"
TOTAL AREA	52.5 sq m	565 sq ft

APARTMENT A16

2 Bedroom Apartment

KITCHEN/LIVING/DINING	6.94m x 4.54m	22'9" x 14'11"
BEDROOM 1	4.99m x 3.30m	16'5" x 10'10"
BEDROOM 2	3.48m x 3.07m	11'5" x 10'1"
TOTAL AREA	72.7 sq m	783 sq ft

APARTMENT A17

3 Bedroom Apartment

KITCHEN/LIVING/DINING	5.75m x 5.33m	18'10" x 17'6"
BEDROOM 1	3.78m x 3.49m	12'5" x 11'5"
BEDROOM 2	4.10m x 3.32m	13'5" x 10'11"
BEDROOM 3	3.63m x 2.96m	11'11" x 9'8"
TOTAL AREA	95.2 sq m	1025 sq ft

APARTMENT A18

2 Bedroom Apartment

KITCHEN/LIVING/DINING	6.78m x 4.49m	22'3" x 14'9"
BEDROOM 1	4.44m x 2.89m	14'7" x 9'6"
BEDROOM 2	3.64m x 2.70m	11'11" x 8'10"
TOTAL AREA	71.0 sq m	764 sq ft

The dimensions given are accurate to within plus or minus two inches (50mm) from floor level and include wardrobe spaces where applicable. ◀▶ Indicates where measurements have been taken from. They are not intended to be used for carpet sizes, appliance space or items of furniture. Views shown are indicative and are for orientation purposes. The information is for general guidance only. S = Services

FLOOR 6

The Tower Apartments A19, A20, A21, A22, A23 & A24



- 1 BEDROOM APARTMENT
- 2 BEDROOM APARTMENT
- 3 BEDROOM APARTMENT



Residents' Private Roof Garden



APARTMENT A19

2 Bedroom Apartment

KITCHEN/LIVING/DINING	7.45m x 5.85m	24'5" x 19'2"
BEDROOM 1	5.23m x 2.98m	17'2" x 9'9"
BEDROOM 2	4.09m x 2.73m	13'5" x 8'11"
TOTAL AREA	82.0 sq m	883 sq ft
TERRACE AREA	14.0 sq m	151 sq ft

APARTMENT A20

2 Bedroom Apartment

KITCHEN/LIVING/DINING	6.94m x 5.33m	22'9" x 17'6"
BEDROOM 1	5.10m x 3.00m	16'9" x 9'10"
BEDROOM 2	3.48m x 3.00m	11'5" x 9'10"
TOTAL AREA	74.6 sq m	803 sq ft
TERRACE AREA	30.0 sq m	323 sq ft

APARTMENT A21

1 Bedroom Apartment

KITCHEN/LIVING/DINING	6.94m x 4.35m	22'9" x 14'3"
BEDROOM	4.18m x 3.10m	13'9" x 10'2"
TOTAL AREA	52.5 sq m	565 sq ft

APARTMENT A22

2 Bedroom Apartment

KITCHEN/LIVING/DINING	5.30m x 4.54m	17'4" x 14'11"
BEDROOM 1	5.10m x 3.30m	16'9" x 10'10"
BEDROOM 2	3.49m x 3.07m	11'5" x 10'1"
TOTAL AREA	71.0 sq m	764 sq ft

APARTMENT A23

3 Bedroom Apartment

KITCHEN/LIVING/DINING	7.20m x 5.33m	23'7" x 17'6"
BEDROOM 1	3.79m x 3.49m	12'5" x 11'5"
BEDROOM 2	4.47m x 2.96m	14'8" x 9'9"
BEDROOM 3	3.63m x 2.65m	11'11" x 8'8"
TOTAL AREA	95.7 sq m	1030 sq ft

APARTMENT A24

2 Bedroom Apartment

KITCHEN/LIVING/DINING	6.78m x 4.49m	22'3" x 14'9"
BEDROOM 1	4.44 x 2.89m	14'7" x 9'6"
BEDROOM 2	3.64m x 2.70m	11'11" x 8'10"
TOTAL AREA	71.0 sq m	764 sq ft

The dimensions given are accurate to within plus or minus two inches (50mm) from floor level and include wardrobe spaces where applicable. ◀▶ Indicates where measurements have been taken from. They are not intended to be used for carpet sizes, appliance space or items of furniture. Views shown are indicative and are for orientation purposes. The information is for general guidance only. S = Services. Computer generated image of Residents' Private Roof Garden.

FLOOR 7

The Tower Apartments A25, A26, A27, A28, A29 & A30

View towards The City

View towards The Shard and Westminster

View towards Stratford and East London



View towards Westminster

View towards Canary Wharf

View towards South London

View towards South London

View towards Greenwich



- 1 BEDROOM APARTMENT
- 2 BEDROOM APARTMENT
- 3 BEDROOM APARTMENT

APARTMENT A25

3 Bedroom Apartment

KITCHEN/LIVING/DINING	7.52m x 6.16m	24'8" x 20'3"
BEDROOM 1	5.24m x 2.80m	17'2" x 9'2"
BEDROOM 2	4.09m x 2.86m	13'5" x 9'5"
BEDROOM 3	3.99m x 2.69m	13'1" x 8'10"
TOTAL AREA	97.8 sq m	1053 sq ft

APARTMENT A26

2 Bedroom Apartment

KITCHEN/LIVING/DINING	6.94m x 5.33m	22'9" x 17'6"
BEDROOM 1	5.10m x 3.00m	16'9" x 9'10"
BEDROOM 2	3.48m x 3.00m	11'5" x 9'10"
TOTAL AREA	74.6 sq m	803 sq ft

APARTMENT A27

1 Bedroom Apartment

KITCHEN/LIVING/DINING	6.94m x 4.35m	22'9" x 14'3"
BEDROOM	4.18m x 3.10m	13'9" x 10'2"
TOTAL AREA	52.5 sq m	565 sq ft

APARTMENT A28

2 Bedroom Apartment

KITCHEN/LIVING/DINING	5.30m x 4.54m	17'4" x 14'11"
BEDROOM 1	5.10m x 3.30m	16'9" x 10'10"
BEDROOM 2	3.49m x 3.07m	11'5" x 10'1"
TOTAL AREA	71.0 sq m	764 sq ft

APARTMENT A29

3 Bedroom Apartment

KITCHEN/LIVING/DINING	5.75m x 5.33m	18'10" x 17'6"
BEDROOM 1	3.78m x 3.49m	12'5" x 11'5"
BEDROOM 2	4.10m x 3.32m	13'5" x 10'11"
BEDROOM 3	3.63m x 2.96m	11'11" x 9'8"
TOTAL AREA	95.7 sq m	1030 sq ft

APARTMENT A30

2 Bedroom Apartment

KITCHEN/LIVING/DINING	6.78m x 4.17m	22'3" x 13'8"
BEDROOM 1	5.34m x 3.04m	17'6" x 9'11"
BEDROOM 2	3.99m x 2.55m	13'1" x 8'4"
TOTAL AREA	71.0 sq m	764 sq ft

The dimensions given are accurate to within plus or minus two inches (50mm) from floor level and include wardrobe spaces where applicable. ◀▶ Indicates where measurements have been taken from. They are not intended to be used for carpet sizes, appliance space or items of furniture. Views shown are indicative and are for orientation purposes. The information is for general guidance only. S = Services

FLOOR 8

The Tower Apartments A31, A32, A33, A34, A35 & A36

View towards The City

View towards The Shard and Westminster

View towards Stratford and East London



View towards Westminster

View towards Canary Wharf

View towards South London

View towards South London

View towards Greenwich



- 1 BEDROOM APARTMENT
- 2 BEDROOM APARTMENT
- 3 BEDROOM APARTMENT

APARTMENT A31

3 Bedroom Apartment

KITCHEN/LIVING/DINING	7.52m x 6.16m	24'8" x 20'3"
BEDROOM 1	5.24m x 2.80m	17'2" x 9'2"
BEDROOM 2	4.09m x 2.86m	13'5" x 9'5"
BEDROOM 3	3.99m x 2.69m	13'1" x 8'10"
TOTAL AREA	97.8 sq m	1053 sq ft

APARTMENT A32

2 Bedroom Apartment

KITCHEN/LIVING/DINING	6.94m x 5.33m	22'9" x 17'6"
BEDROOM 1	5.10m x 3.00m	16'9" x 9'10"
BEDROOM 2	3.48m x 3.00m	11'5" x 9'10"
TOTAL AREA	74.6 sq m	803 sq ft

APARTMENT A33

1 Bedroom Apartment

KITCHEN/LIVING/DINING	6.94m x 4.35m	22'9" x 14'3"
BEDROOM	4.18m x 3.10m	13'9" x 10'2"
TOTAL AREA	52.5 sq m	565 sq ft

APARTMENT A34

2 Bedroom Apartment

KITCHEN/LIVING/DINING	5.30m x 4.54m	17'4" x 14'11"
BEDROOM 1	5.10m x 3.30m	16'9" x 10'10"
BEDROOM 2	3.48m x 3.07m	11'5" x 10'1"
TOTAL AREA	71.0 sq m	764 sq ft

APARTMENT A35

3 Bedroom Apartment

KITCHEN/LIVING/DINING	5.75m x 5.33m	18'10" x 17'6"
BEDROOM 1	3.78m x 3.49m	12'5" x 11'5"
BEDROOM 2	4.10m x 3.32m	13'5" x 10'11"
BEDROOM 3	3.63m x 2.96m	11'11" x 9'8"
TOTAL AREA	95.7 sq m	1030 sq ft

APARTMENT A36

2 Bedroom Apartment

KITCHEN/LIVING/DINING	6.78m x 4.49m	22'3" x 14'9"
BEDROOM 1	4.44m x 2.89m	14'7" x 9'6"
BEDROOM 2	3.64m x 2.70m	11'11" x 8'10"
TOTAL AREA	71.0 sq m	764 sq ft

The dimensions given are accurate to within plus or minus two inches (50mm) from floor level and include wardrobe spaces where applicable. ◀▶ Indicates where measurements have been taken from. They are not intended to be used for carpet sizes, appliance space or items of furniture. Views shown are indicative and are for orientation purposes. The information is for general guidance only. S = Services

FLOOR 9

The Tower Apartments A37, A38, A39, A40, A41 & A42

View towards The City

View towards The Shard and Westminster

View towards Stratford and East London



View towards Westminster

View towards Canary Wharf

View towards South London

View towards South London

View towards Greenwich



- 1 BEDROOM APARTMENT
- 2 BEDROOM APARTMENT
- 3 BEDROOM APARTMENT

APARTMENT A37

<i>3 Bedroom Apartment</i>			
KITCHEN/LIVING/DINING	7.52m x 6.16m	24'8" x 20'3"	
BEDROOM 1	5.24m x 2.80m	17'2" x 9'2"	
BEDROOM 2	4.09m x 2.86m	13'5" x 9'5"	
BEDROOM 3	4.09m x 2.69m	13'5" x 8'10"	
TOTAL AREA	98.1 sq m	1056 sq ft	

APARTMENT A38

<i>2 Bedroom Apartment</i>			
KITCHEN/LIVING/DINING	5.42m x 4.91m	17'9" x 16'1"	
BEDROOM 1	5.10m x 3.30m	16'9" x 10'10"	
BEDROOM 2	3.39m x 3.20m	11'1" x 10'6"	
TOTAL AREA	72.7 sq m	783 sq ft	

APARTMENT A39

<i>1 Bedroom Apartment</i>			
KITCHEN/LIVING/DINING	6.94m x 4.35m	22'9" x 14'3"	
BEDROOM	4.18m x 3.10m	13'9" x 10'2"	
TOTAL AREA	52.5 sq m	565 sq ft	

APARTMENT A40

<i>2 Bedroom Apartment</i>			
KITCHEN/LIVING/DINING	6.94m x 4.54m	22'9" x 14'11"	
BEDROOM 1	5.10m x 3.30m	16'9" x 10'10"	
BEDROOM 2	3.48m x 3.07m	11'5" x 10'1"	
TOTAL AREA	73.0 sq m	786 sq ft	

APARTMENT A41

<i>3 Bedroom Apartment</i>			
KITCHEN/LIVING/DINING	7.20m x 5.33m	23'7" x 17'6"	
BEDROOM 1	3.78m x 3.49m	12'5" x 11'5"	
BEDROOM 2	4.47m x 2.96m	14'8" x 9'9"	
BEDROOM 3	3.63m x 2.65m	11'11" x 8'8"	
TOTAL AREA	96.2 sq m	1035 sq ft	

APARTMENT A42

<i>2 Bedroom Apartment</i>			
KITCHEN/LIVING/DINING	6.78m x 4.49m	22'3" x 14'9"	
BEDROOM 1	4.44m x 2.89m	14'7" x 9'6"	
BEDROOM 2	3.64m x 2.70m	11'11" x 8'10"	
TOTAL AREA	71.0 sq m	764 sq ft	

The dimensions given are accurate to within plus or minus two inches (50mm) from floor level and include wardrobe spaces where applicable. ◀▶ Indicates where measurements have been taken from. They are not intended to be used for carpet sizes, appliance space or items of furniture. Views shown are indicative and are for orientation purposes. The information is for general guidance only. S = Services

FLOOR 10

The Tower Apartments A43, A44, A45, A46, A47 & A48

View towards The City

View towards The Shard and Westminster

View towards Stratford and East London



View towards Westminster

View towards Canary Wharf

View towards South London

View towards South London

View towards Greenwich



- 1 BEDROOM APARTMENT
- 2 BEDROOM APARTMENT
- 3 BEDROOM APARTMENT

APARTMENT A43

<i>3 Bedroom Apartment</i>		
KITCHEN/LIVING/DINING	7.52m x 6.16m	24'8" x 20'3"
BEDROOM 1	5.24m x 2.80m	17'2" x 9'2"
BEDROOM 2	4.09m x 2.86m	13'5" x 9'5"
BEDROOM 3	4.09m x 2.69m	13'5" x 8'10"
TOTAL AREA	98.1 sq m	1056 sq ft

APARTMENT A44

<i>2 Bedroom Apartment</i>		
KITCHEN/LIVING/DINING	5.42m x 4.91m	17'9" x 16'1"
BEDROOM 1	5.10m x 3.30m	16'9" x 10'10"
BEDROOM 2	3.39m x 3.20m	11'1" x 10'6"
TOTAL AREA	72.7 sq m	783 sq ft

APARTMENT A45

<i>1 Bedroom Apartment</i>		
KITCHEN/LIVING/DINING	6.94m x 4.35m	22'9" x 14'3"
BEDROOM	4.18m x 3.10m	13'9" x 10'2"
TOTAL AREA	52.5 sq m	565 sq ft

APARTMENT A46

<i>2 Bedroom Apartment</i>		
KITCHEN/LIVING/DINING	6.94m x 4.54m	22'9" x 14'11"
BEDROOM 1	5.10m x 3.30m	16'9" x 10'10"
BEDROOM 2	3.48m x 3.07m	11'5" x 10'1"
TOTAL AREA	73.0 sq m	786 sq ft

APARTMENT A47

<i>3 Bedroom Apartment</i>		
KITCHEN/LIVING/DINING	5.75m x 5.33m	18'10" x 17'6"
BEDROOM 1	3.78m x 3.49m	12'5" x 11'5"
BEDROOM 2	4.10m x 3.32m	13'5" x 10'11"
BEDROOM 3	3.63m x 2.96m	11'11" x 9'8"
TOTAL AREA	95.7 sq m	1030 sq ft

APARTMENT A48

<i>2 Bedroom Apartment</i>		
KITCHEN/LIVING/DINING	6.78m x 4.49m	22'3" x 14'9"
BEDROOM 1	4.44m x 2.89m	14'7" x 9'6"
BEDROOM 2	3.64m x 2.70m	11'11" x 8'10"
TOTAL AREA	71.0 sq m	764 sq ft

The dimensions given are accurate to within plus or minus two inches (50mm) from floor level and include wardrobe spaces where applicable. ◀▶ Indicates where measurements have been taken from. They are not intended to be used for carpet sizes, appliance space or items of furniture. Views shown are indicative and are for orientation purposes. The information is for general guidance only. S = Services

FLOOR 11

The Tower Apartments A49, A50, A51, A52, A53 & A54

View towards The City

View towards The Shard and Westminster

View towards Stratford and East London



View towards Westminster

View towards Canary Wharf

View towards South London

View towards South London

View towards Greenwich



- 1 BEDROOM APARTMENT
- 2 BEDROOM APARTMENT
- 3 BEDROOM APARTMENT

APARTMENT A49

3 Bedroom Apartment

KITCHEN/LIVING/DINING	7.52m x 6.16m	24'8" x 20'3"
BEDROOM 1	5.24m x 2.80m	17'2" x 9'2"
BEDROOM 2	4.09m x 2.86m	13'5" x 9'5"
BEDROOM 3	4.09m x 2.69m	13'5" x 8'10"
TOTAL AREA	98.1 sq m	1056 sq ft

APARTMENT A50

2 Bedroom Apartment

KITCHEN/LIVING/DINING	5.42m x 4.91m	17'9" x 16'1"
BEDROOM 1	5.10m x 3.30m	16'9" x 10'10"
BEDROOM 2	3.39m x 3.20m	11'1" x 10'6"
TOTAL AREA	72.7 sq m	783 sq ft

APARTMENT A51

1 Bedroom Apartment

KITCHEN/LIVING/DINING	6.94m x 4.35m	22'9" x 14'3"
BEDROOM	4.18m x 3.10m	13'9" x 10'2"
TOTAL AREA	52.5 sq m	565 sq ft

APARTMENT A52

2 Bedroom Apartment

KITCHEN/LIVING/DINING	6.94m x 4.54m	22'9" x 14'11"
BEDROOM 1	5.10m x 3.30m	16'9" x 10'10"
BEDROOM 2	3.48m x 3.07m	11'5" x 10'1"
TOTAL AREA	73.0 sq m	786 sq ft

APARTMENT A53

3 Bedroom Apartment

KITCHEN/LIVING/DINING	7.20m x 5.33m	23'7" x 17'6"
BEDROOM 1	3.78m x 3.49m	12'5" x 11'5"
BEDROOM 2	4.47m x 2.96m	14'8" x 9'9"
BEDROOM 3	3.63m x 2.65m	11'11" x 8'8"
TOTAL AREA	96.2 sq m	1035 sq ft

APARTMENT A54

2 Bedroom Apartment

KITCHEN/LIVING/DINING	6.78m x 4.49m	22'3" x 14'9"
BEDROOM 1	4.44m x 2.89m	14'7" x 9'6"
BEDROOM 2	3.64m x 2.70m	11'11" x 8'10"
TOTAL AREA	71.0 sq m	764 sq ft

The dimensions given are accurate to within plus or minus two inches (50mm) from floor level and include wardrobe spaces where applicable. ◀▶ Indicates where measurements have been taken from. They are not intended to be used for carpet sizes, appliance space or items of furniture. Views shown are indicative and are for orientation purposes. The information is for general guidance only. S = Services

FLOOR 12

The Tower Apartments A55, A56, A57, A58, A59 & A60

View towards The City

View towards The Shard and Westminster

View towards Stratford and East London



View towards Westminster

View towards Canary Wharf

View towards South London

View towards South London

View towards Greenwich



- 1 BEDROOM APARTMENT
- 2 BEDROOM APARTMENT
- 3 BEDROOM APARTMENT

APARTMENT A55

3 Bedroom Apartment

KITCHEN/LIVING/DINING	7.52m x 6.16m	24'8" x 20'3"
BEDROOM 1	5.24m x 2.80m	17'2" x 9'2"
BEDROOM 2	4.09m x 2.86m	13'5" x 9'5"
BEDROOM 3	4.09m x 2.69m	13'5" x 8'10"
TOTAL AREA	98.1 sq m	1056 sq ft

APARTMENT A56

2 Bedroom Apartment

KITCHEN/LIVING/DINING	5.42m x 4.91m	17'9" x 16'1"
BEDROOM 1	5.10m x 3.30m	16'9" x 10'10"
BEDROOM 2	3.48m x 3.20m	11'5" x 10'6"
TOTAL AREA	72.9 sq m	785 sq ft

APARTMENT A57

1 Bedroom Apartment

KITCHEN/LIVING/DINING	6.94m x 4.35m	22'9" x 14'3"
BEDROOM	4.18m x 3.10m	13'9" x 10'2"
TOTAL AREA	52.5 sq m	565 sq ft

APARTMENT A58

2 Bedroom Apartment

KITCHEN/LIVING/DINING	5.30m x 4.54m	17'4" x 14'11"
BEDROOM 1	5.10m x 3.30m	16'9" x 10'10"
BEDROOM 2	3.89m x 3.07m	12'9" x 10'1"
TOTAL AREA	73.1 sq m	787 sq ft

APARTMENT A59

3 Bedroom Apartment

KITCHEN/LIVING/DINING	5.75m x 5.33m	18'10" x 17'6"
BEDROOM 1	3.78m x 3.49m	12'5" x 11'5"
BEDROOM 2	4.10m x 3.32m	13'5" x 10'11"
BEDROOM 3	3.63m x 2.96m	11'11" x 9'8"
TOTAL AREA	95.7 sq m	1030 sq ft

APARTMENT A60

2 Bedroom Apartment

KITCHEN/LIVING/DINING	6.78m x 4.49m	22'3" x 14'9"
BEDROOM 1	4.44m x 2.89m	14'7" x 9'6"
BEDROOM 2	3.64m x 2.70m	11'11" x 8'10"
TOTAL AREA	71.0 sq m	764 sq ft

The dimensions given are accurate to within plus or minus two inches (50mm) from floor level and include wardrobe spaces where applicable. ◀▶ Indicates where measurements have been taken from. They are not intended to be used for carpet sizes, appliance space or items of furniture. Views shown are indicative and are for orientation purposes. The information is for general guidance only. S = Services

FLOOR 13

The Tower Apartments A61, A62, A63, A64, A65 & A66

View towards The City

View towards The Shard and Westminster

View towards Stratford and East London



View towards Westminster

View towards Canary Wharf

View towards South London

View towards South London

View towards Greenwich



- 1 BEDROOM APARTMENT
- 2 BEDROOM APARTMENT
- 3 BEDROOM APARTMENT

APARTMENT A61

<i>3 Bedroom Apartment</i>			
KITCHEN/LIVING/DINING	7.52m x 6.16m	24'8" x 20'3"	
BEDROOM 1	5.24m x 2.80m	17'2" x 9'2"	
BEDROOM 2	4.09m x 2.86m	13'5" x 9'5"	
BEDROOM 3	4.09m x 2.69m	13'5" x 8'10"	
TOTAL AREA	98.1 sq m	1056 sq ft	

APARTMENT A62

<i>2 Bedroom Apartment</i>			
KITCHEN/LIVING/DINING	5.42m x 4.91m	17'9" x 16'1"	
BEDROOM 1	5.10m x 3.30m	16'9" x 10'10"	
BEDROOM 2	3.48m x 3.20m	11'5" x 10'6"	
TOTAL AREA	72.9 sq m	785 sq ft	

APARTMENT A63

<i>1 Bedroom Apartment</i>			
KITCHEN/LIVING/DINING	6.94m x 4.35m	22'9" x 14'3"	
BEDROOM	4.18m x 3.10m	13'9" x 10'2"	
TOTAL AREA	52.5 sq m	565 sq ft	

APARTMENT A64

<i>2 Bedroom Apartment</i>			
KITCHEN/LIVING/DINING	5.30m x 4.54m	17'4" x 14'11"	
BEDROOM 1	5.10m x 3.30m	16'9" x 10'10"	
BEDROOM 2	3.89m x 3.07m	12'9" x 10'1"	
TOTAL AREA	73.1 sq m	787 sq ft	

APARTMENT A65

<i>3 Bedroom Apartment</i>			
KITCHEN/LIVING/DINING	7.20m x 5.33m	23'7" x 17'6"	
BEDROOM 1	3.78m x 3.49m	12'5" x 11'5"	
BEDROOM 2	4.47m x 2.96m	14'8" x 9'9"	
BEDROOM 3	3.63m x 2.65m	11'11" x 8'8"	
TOTAL AREA	96.2 sq m	1035 sq ft	

APARTMENT A66

<i>2 Bedroom Apartment</i>			
KITCHEN/LIVING/DINING	6.78m x 4.49m	22'3" x 14'9"	
BEDROOM 1	4.44m x 2.89m	14'7" x 9'6"	
BEDROOM 2	3.64m x 2.70m	11'11" x 8'10"	
TOTAL AREA	71.0 sq m	764 sq ft	

The dimensions given are accurate to within plus or minus two inches (50mm) from floor level and include wardrobe spaces where applicable. ◀▶ Indicates where measurements have been taken from. They are not intended to be used for carpet sizes, appliance space or items of furniture. Views shown are indicative and are for orientation purposes. The information is for general guidance only. S = Services

FLOOR 14

The Tower Apartments A67, A68, A69, A70, A71 & A72

View towards The City

View towards The Shard and Westminster

View towards Stratford and East London



View towards Westminster

View towards Canary Wharf

View towards South London

View towards South London

View towards Greenwich



- 1 BEDROOM APARTMENT
- 2 BEDROOM APARTMENT
- 3 BEDROOM APARTMENT

APARTMENT A67

<i>3 Bedroom Apartment</i>			
KITCHEN/LIVING/DINING	7.52m x 6.16m	24'8" x 20'3"	
BEDROOM 1	5.24m x 2.80m	17'2" x 9'2"	
BEDROOM 2	4.09m x 2.86m	13'5" x 9'5"	
BEDROOM 3	4.09m x 2.69m	13'5" x 8'10"	
TOTAL AREA	98.1 sq m	1056 sq ft	

APARTMENT A68

<i>2 Bedroom Apartment</i>			
KITCHEN/LIVING/DINING	6.94m x 5.43m	22'9" x 17'10"	
BEDROOM 1	4.99m x 3.00m	16'4" x 9'10"	
BEDROOM 2	3.48m x 3.00m	11'5" x 9'10"	
TOTAL AREA	74.5 sq m	802 sq ft	

APARTMENT A69

<i>1 Bedroom Apartment</i>			
KITCHEN/LIVING/DINING	6.94m x 4.35m	22'9" x 14'3"	
BEDROOM	4.18m x 3.10m	13'9" x 10'2"	
TOTAL AREA	52.5 sq m	565 sq ft	

APARTMENT A70

<i>2 Bedroom Apartment</i>			
KITCHEN/LIVING/DINING	6.94m x 4.54m	22'9" x 14'11"	
BEDROOM 1	5.10m x 3.30m	16'9" x 10'10"	
BEDROOM 2	3.48m x 3.07m	11'5" x 10'1"	
TOTAL AREA	73.0 sq m	786 sq ft	

APARTMENT A71

<i>3 Bedroom Apartment</i>			
KITCHEN/LIVING/DINING	7.20m x 5.33m	23'7" x 17'6"	
BEDROOM 1	3.78m x 3.49m	12'5" x 11'5"	
BEDROOM 2	4.47m x 2.96m	14'8" x 9'9"	
BEDROOM 3	3.63m x 2.65m	11'11" x 8'8"	
TOTAL AREA	96.2 sq m	1035 sq ft	

APARTMENT A72

<i>2 Bedroom Apartment</i>			
KITCHEN/LIVING/DINING	6.78m x 4.49m	22'3" x 14'9"	
BEDROOM 1	4.44m x 2.89m	14'7" x 9'6"	
BEDROOM 2	3.64m x 2.70m	11'11" x 8'10"	
TOTAL AREA	71.0 sq m	764 sq ft	

The dimensions given are accurate to within plus or minus two inches (50mm) from floor level and include wardrobe spaces where applicable. ◀▶ Indicates where measurements have been taken from. They are not intended to be used for carpet sizes, appliance space or items of furniture. Views shown are indicative and are for orientation purposes. The information is for general guidance only. S = Services

FLOOR 15

The Tower Apartments A73, A74, A75, A76, A77 & A78

View towards The City

View towards The Shard and Westminster

View towards Stratford and East London



View towards Westminster

View towards Canary Wharf

View towards South London

View towards South London

View towards Greenwich



- 1 BEDROOM APARTMENT
- 2 BEDROOM APARTMENT
- 3 BEDROOM APARTMENT

APARTMENT A73

<i>3 Bedroom Apartment</i>			
KITCHEN/LIVING/DINING	7.52m x 6.16m	24'8" x 20'3"	
BEDROOM 1	5.24m x 2.80m	17'2" x 9'2"	
BEDROOM 2	4.09m x 2.86m	13'5" x 9'5"	
BEDROOM 3	4.09m x 2.69m	13'5" x 8'10"	
TOTAL AREA	98.1 sq m	1056 sq ft	

APARTMENT A74

<i>2 Bedroom Apartment</i>			
KITCHEN/LIVING/DINING	6.94m x 5.43m	22'9" x 17'10"	
BEDROOM 1	4.99m x 3.00m	16'4" x 9'10"	
BEDROOM 2	3.48m x 3.00m	11'5" x 9'10"	
TOTAL AREA	74.5 sq m	802 sq ft	

APARTMENT A75

<i>1 Bedroom Apartment</i>			
KITCHEN/LIVING/DINING	6.94m x 4.35m	22'9" x 14'3"	
BEDROOM	4.18m x 3.10m	13'9" x 10'2"	
TOTAL AREA	52.5 sq m	565 sq ft	

APARTMENT A76

<i>2 Bedroom Apartment</i>			
KITCHEN/LIVING/DINING	6.94m x 4.54m	22'9" x 14'11"	
BEDROOM 1	5.10m x 3.30m	16'9" x 10'10"	
BEDROOM 2	3.48m x 3.07m	11'5" x 10'1"	
TOTAL AREA	73.0 sq m	786 sq ft	

APARTMENT A77

<i>3 Bedroom Apartment</i>			
KITCHEN/LIVING/DINING	5.75m x 5.33m	18'10" x 17'6"	
BEDROOM 1	3.78m x 3.49m	12'5" x 11'5"	
BEDROOM 2	4.10m x 3.32m	13'5" x 10'11"	
BEDROOM 3	3.63m x 2.96m	11'11" x 9'8"	
TOTAL AREA	95.7 sq m	1030 sq ft	

APARTMENT A78

<i>2 Bedroom Apartment</i>			
KITCHEN/LIVING/DINING	6.78m x 4.49m	22'3" x 14'9"	
BEDROOM 1	4.44m x 2.89m	14'7" x 9'6"	
BEDROOM 2	3.64m x 2.70m	11'11" x 8'10"	
TOTAL AREA	71.0 sq m	764 sq ft	

The dimensions given are accurate to within plus or minus two inches (50mm) from floor level and include wardrobe spaces where applicable. ◀▶ Indicates where measurements have been taken from. They are not intended to be used for carpet sizes, appliance space or items of furniture. Views shown are indicative and are for orientation purposes. The information is for general guidance only. S = Services

FLOOR 16

The Tower Apartments A79 & A80

View towards The City

View towards The Shard and Westminster

View towards Stratford and East London



View towards Westminster

View towards South London

View towards Canary Wharf



- 2 BEDROOM APARTMENT
- 3 BEDROOM APARTMENT

View towards South London

View towards Greenwich

APARTMENT A79

3 Bedroom Apartment

KITCHEN/LIVING/DINING	7.20m x 5.33m	23'7" x 17'6"
BEDROOM 1	3.78m x 3.49m	12'5" x 11'5"
BEDROOM 2	4.47m x 2.96m	14'8" x 9'9"
BEDROOM 3	3.63m x 2.65m	11'11" x 8'8"
TOTAL AREA	96.2 sq m	1035 sq ft
TERRACE AREA	36.0 sq m	388 sq ft

APARTMENT A80

2 Bedroom Apartment

KITCHEN/LIVING/DINING	6.78m x 4.49m	22'3" x 14'9"
BEDROOM 1	4.44m x 2.89m	14'7" x 9'6"
BEDROOM 2	3.64m x 2.70m	11'11" x 8'10"
TOTAL AREA	71.0 sq m	764 sq ft
TERRACE AREA	40.0 sq m	431 sq ft

The dimensions given are accurate to within plus or minus two inches (50mm) from floor level and include wardrobe spaces where applicable. ◀▶ Indicates where measurements have been taken from. They are not intended to be used for carpet sizes, appliance space or items of furniture. Views shown are indicative and are for orientation purposes. The information is for general guidance only. S = Services → = Steps

FLOOR 17 SUB-PENTHOUSES

The Tower Apartments A81 & A82



APARTMENT A81

3 Bedroom Apartment

KITCHEN/LIVING/DINING	5.75m x 5.33m	18'10" x 17'6"
BEDROOM 1	3.78m x 3.49m	12'5" x 11'5"
BEDROOM 2	4.10m x 3.32m	13'5" x 10'11"
BEDROOM 3	3.63m x 2.96m	11'11" x 9'8"
TOTAL AREA	95.7 sq m	1030 sq ft

APARTMENT A82

2 Bedroom Apartment

KITCHEN/LIVING/DINING	6.78m x 4.49m	22'3" x 14'9"
BEDROOM 1	4.44m x 2.89m	14'7" x 9'6"
BEDROOM 2	3.64m x 2.70m	11'11" x 8'10"
TOTAL AREA	71.0 sq m	764 sq ft

FLOOR 18 PENTHOUSES

The Tower Apartments A83 & A84



APARTMENT A83

3 Bedroom Apartment

KITCHEN/LIVING/DINING	7.20m x 5.33m	23'7" x 17'6"
BEDROOM 1	3.78m x 3.49m	12'5" x 11'5"
BEDROOM 2	4.47m x 2.96m	14'8" x 9'9"
BEDROOM 3	3.63m x 2.65m	11'11" x 8'8"
TOTAL AREA	97.0 sq m	1044 sq ft

APARTMENT A84

2 Bedroom Apartment

KITCHEN/LIVING/DINING	6.78m x 4.49m	22'3" x 14'9"
BEDROOM 1	4.44m x 2.89m	14'7" x 9'6"
BEDROOM 2	3.64m x 2.70m	11'11" x 8'10"
TOTAL AREA	71.0 sq m	764 sq ft

The dimensions given are accurate to within plus or minus two inches (50mm) from floor level and include wardrobe spaces where applicable. ◀▶ Indicates where measurements have been taken from. They are not intended to be used for carpet sizes, appliance space or items of furniture. Views shown are indicative and are for orientation purposes. The information is for general guidance only. S = Services



The Tower Apartments

BEAUTIFULLY LIGHT AND SPACIOUS

LIVING

The apartments are characterised by stylish and spacious living areas that have been tailor-made for 21st century life. In line with the enduring trend for open-plan living, beautifully engineered kitchens, equipped with state-of-the-art appliances, seamlessly flow into dining and seating areas that create sociable spaces.



DINING

Designed and built to the most exacting standards, each apartment at Bermondsey Works is the perfect fusion of form and function, where every element has been carefully considered. In each room, only the finest fixtures and fittings have been individually selected for their high performance and exceptional aesthetics.

SLEEPING

Inspired by some of the world's finest hotels, bedrooms at Bermondsey Works are luxuriously large and elegantly appointed. The epitome of luxury and convenience, the master bedrooms in the 2 & 3 bedrooms apartments boast chic and sleek ensuite shower rooms and wardrobes fitted with sliding, mirrored doors.





DESIGNED FOR LIVING

Premium fixtures and fittings for ultimate luxury

KITCHENS

- A range of contemporary fitted units from London designer Urban Myth
- Stone work surfaces
- Glass splash-backs
- Feature lighting under wall units
- Fully integrated Smeg appliances: stainless steel oven, ceramic hob, dishwasher, fridge/freezer and washer/dryer
- Stainless steel extractor hood

BATH & ENSUITE SHOWER ROOMS

- Pure white bathroom suites with chrome taps & mixers
- Bath with thermostatic mixer shower over and glazed screen
- Bespoke cabinetry with built in storage & low voltage socket
- Walk-in shower enclosure to ensuites
- Contemporary ceramic & porcelain tiling
- Two towel rails

DÉCOR

- Smooth finish to all walls & ceilings, painted in subtle white emulsion
- White satinwood finish to doors & woodwork

FIXTURES & FITTINGS

- Wardrobe to main bedroom with sliding, mirrored doors
- Satin chrome door handles
- Recessed downlights to kitchen & bathrooms
- Sky+, TV & telephone outlets to living room, with TV outlets to all bedrooms

GENERAL FEATURES

- 24hr concierge service
- Private residents' gymnasium
- Two landscaped private residents' roof gardens
- Underground car parking*
- Outside space to all apartments within The Tower
- Communal bicycle storage
- Under-floor heating

FLOORING

- Kitchen, living room & hallway flooring in premium quality woodstrip laminate
- Contemporary ceramic tiling to bathroom & ensuite shower rooms
- Bedrooms carpeted in a warm, neutral colour tone

SECURITY & WARRANTIES

- Video entryphone system to all apartments
- Looped recorded CCTV system to communal areas
- 10 year NHBC warranty
- Two year, Telford Homes 24/7 emergency cover
- Comprehensive induction with designated Telford Homes Customer Service Manager

Specification details are correct at time of going to print but are for guidance only and remain subject to change.
Exact fittings and finishes are subject to availability at time of installation.
*Available at additional cost.

A man in a grey suit is handing a set of keys to a smiling couple. The man is on the left, wearing glasses and a grey suit jacket over a white shirt. The couple consists of a man in a grey suit jacket and a woman in a grey blazer over a bright green top. They are standing in a modern interior with large stone columns, a vase of white flowers, and a large painting of a domed building in the background. The scene is lit with warm, ambient lighting, including starburst lights hanging from the ceiling.

**UNRIVALLED
CUSTOMER
SERVICE**

97% OF CUSTOMERS SURVEYED
WOULD RECOMMEND US*

**THE TELFORD HOMES BRAND DELIVERS HIGH QUALITY, HIGHLY DESIRABLE
NEW HOMES THAT ARE SUPPORTED BY FIRST-CLASS CUSTOMER SERVICE.**

Telford Homes Plc is a leading London-focused residential property developer. We specialise in creating, designing and building innovative landmark developments in some of the most desirable and sought after locations in the capital. The emphasis of a Telford Homes project is always focused foremost upon quality, luxury and exclusivity. A high specification, combined with some of the finest designer names, ensures that each individual property meets or exceeds the most demanding expectations. Architectural innovation and excellence ensures a true landmark development, while a fresh and imaginative approach to communal areas further ensures a truly luxurious lifestyle experience. That is why 97%* of customers surveyed in 2014* would recommend Telford Homes to their friends and family.

(*Independent satisfaction survey results for 12 months from January to December 2014.)



Tel: +44 (0)1992 809800

www.telfordhomes.london

Telford Homes Plc
Telford House, Queensgate, Britannia Road, Waltham Cross, Herts EN8 7TF.



telfordhomes

These particulars are for illustration only. We operate a policy of continuous improvement and individual features such as kitchen and bathroom layouts, doors, windows and elevational treatments may vary from time to time. Specification details are for guide purposes only and remain subject to change without prior notice. Should a replacement be required this will be to an equal or higher standard. Consequently these particulars should be treated as general guidance only and cannot be relied upon as accurately describing any of the Specified Matters prescribed by any order made under the Property Misdescriptions Act 1991. Nor do they constitute a contract, part of a contract or a warranty. Bermondsey Works is a marketing name and may not form part of the final postal address. Computer generated images are indicative only and may be subject to change. Details correct at time of going to print E and OE.



A development by Telford Homes Plc



www.telfordhomes.london