



BROOK VALLEY GARDENS

CHIPPING BARNET · EN5



THE HADLEY

PLOTS 175-177

A contemporary three bedroom family home set over three floors, featuring a spacious kitchen/dining room with access to the garden.

Computer generated image. All elevations, architectural detailing and landscaping are indicative only and may vary from the illustration. Please speak to a Sales Consultant for further details.

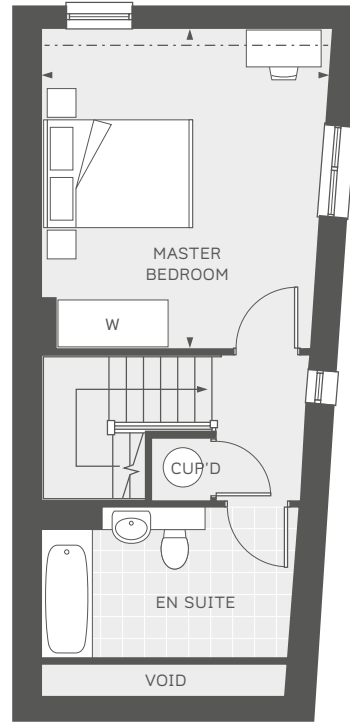


COUNTRYSIDE
Places People Love

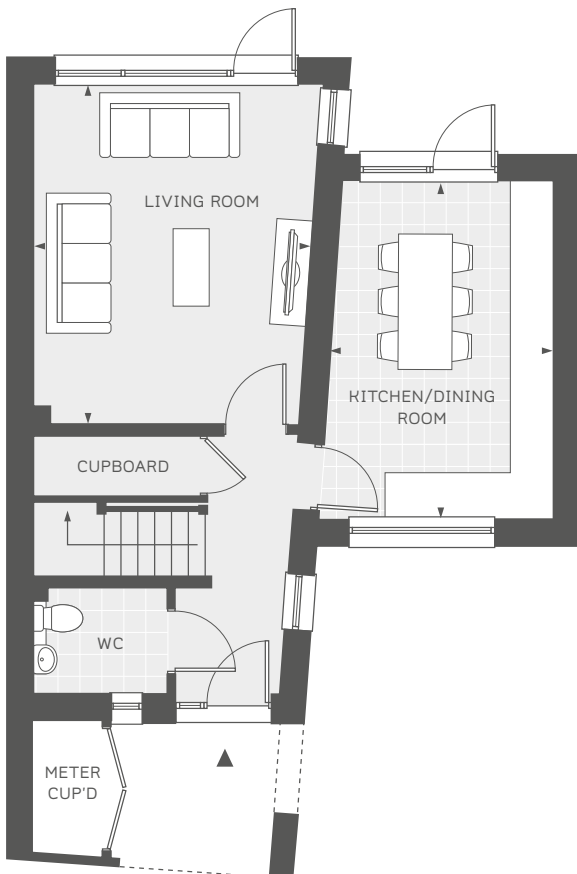
THE HADLEY

PLOTS 175-177

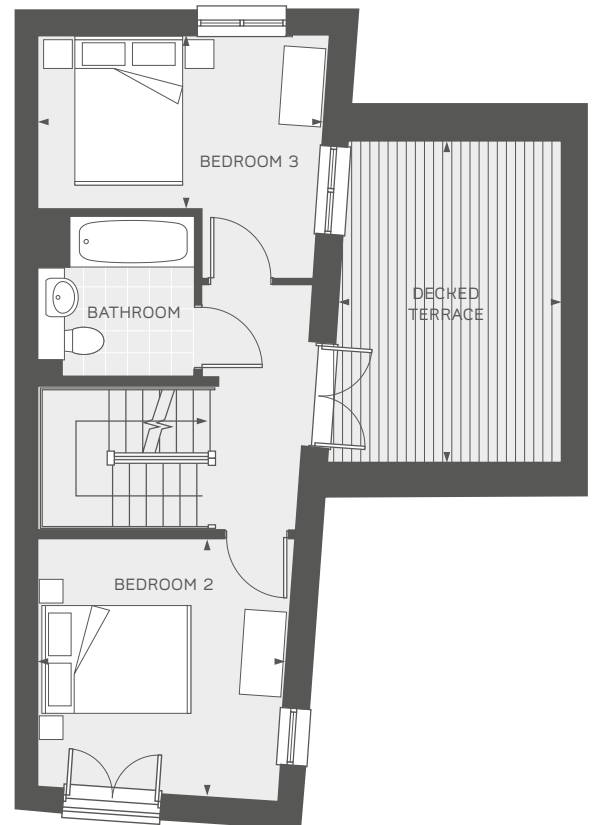
KITCHEN/DINING ROOM	4.69m x 3.07m	15'4" x 10'0"
LIVING ROOM	4.72m x 3.86m	15'5" x 12'8"
MASTER BEDROOM	4.36m x 3.94m	14'3" x 12'11"
BEDROOM 2	3.57m x 3.40m	11'8" x 11'1"
BEDROOM 3	3.99m x 2.40m	13'1" x 7'10"
DECKED TERRACE	4.51m x 3.11m	14'9" x 10'2"
TOTAL INTERNAL AREA	119 sq.m	1280 sq.ft



Second Floor



Ground Floor



First Floor

--- Reduced head height. W - Wardrobe. Please ask Sales Consultants for detailed information.

All room sizes are approximate showing maximum dimensions which have been taken into the kitchen units. They are to finished measurements and are not intended for carpet sizes or items of furniture. Countryside operates a policy of continuous product development and all room layouts may be subject to minor modifications. Kitchen and bathroom layouts shown are indicative only. Please ask Sales Consultants for detailed information regarding specific properties.



COUNTRYSIDE
Places People Love



BROOK VALLEY GARDENS

CHIPPING BARNET · EN5



THE LANCASTER

PLOTS 181-186 & 203-209

A three storey four bedroom house featuring an open plan kitchen/dining area with French doors leading to the garden. The master bedroom suite on the second floor features a large en suite, private dressing area and Juliet balcony. Plus, there are a further three generous sized double rooms, for all the family.

Computer generated image. All elevations, architectural detailing and landscaping are indicative only and may vary from the illustration. Please speak to a Sales Consultant for further details.

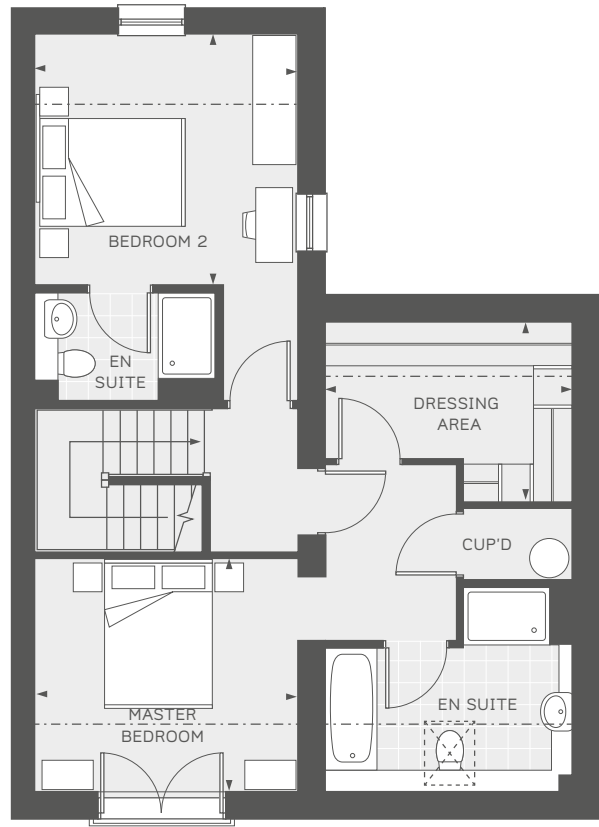


COUNTRYSIDE
Places People Love

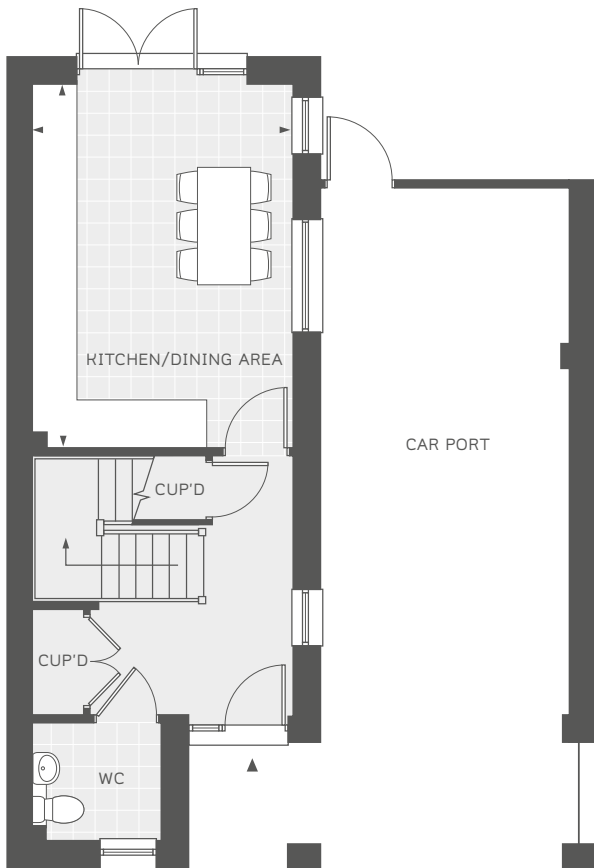
THE LANCASTER

PLOTS 181-186 & 203-209

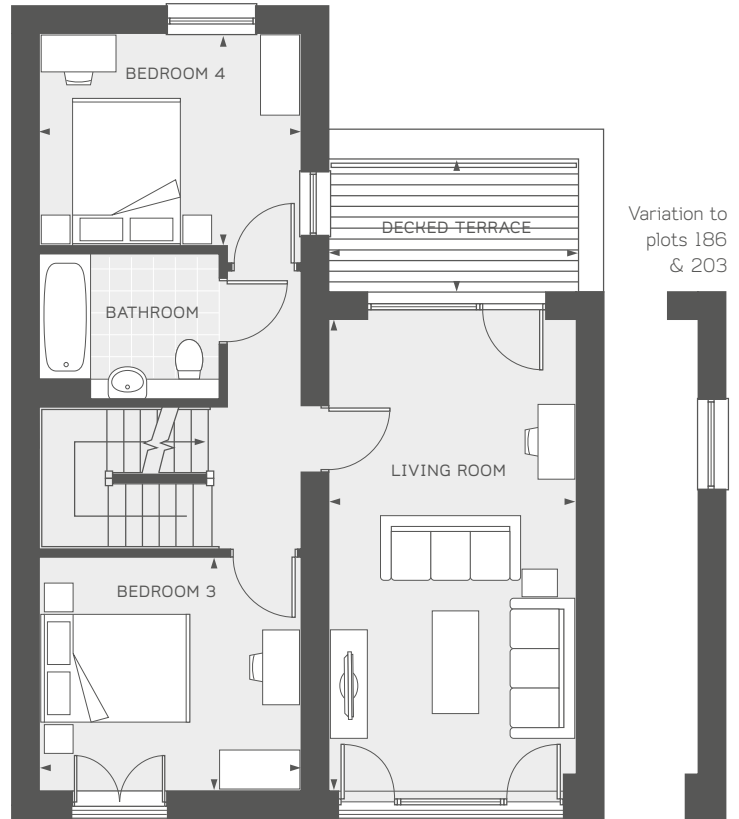
KITCHEN/DINING AREA	5.04m x 3.63m	16'6" x 11'10"
LIVING ROOM	6.53m x 3.43m	21'5" x 11'3"
MASTER BEDROOM	3.63m x 3.24m	11'10" x 10'7"
DRESSING AREA	3.43m x 2.50m	11'3" x 8'2"
BEDROOM 2	3.63m x 3.49m	11'10" x 11'4"
BEDROOM 3	3.63m x 3.20m	11'10" x 10'5"
BEDROOM 4	3.63m x 2.94m	11'10" x 9'7"
DECKED TERRACE	3.48m x 1.86m	11'5" x 6'1"
TOTAL INTERNAL AREA	162 sq.m	1743 sq.ft



Second Floor



Ground Floor



First Floor

Variation to plots 186 & 203

--- Reduced head height. Roof light. Please ask Sales Consultants for detailed information.

All room sizes are approximate showing maximum dimensions which have been taken into the kitchen units. They are to finished measurements and are not intended for carpet sizes or items of furniture. Countryside operates a policy of continuous product development and all room layouts may be subject to minor modifications. Kitchen and bathroom layouts shown are indicative only. Please ask Sales Consultants for detailed information regarding specific properties.



COUNTRYSIDE
Places People Love



BROOK VALLEY GARDENS

CHIPPING BARNET · EN5



THE WILBRAHAM

PLOTS 162-168 & 187-192

A three storey three bedroom house featuring an open plan kitchen/living/dining area ideal for entertaining, with French doors leading to the garden. The master bedroom sits secluded on the second floor and features an en suite and both a Juliet balcony and decked terrace.

Computer generated image. All elevations, architectural detailing and landscaping are indicative only and may vary from the illustration. Please speak to a Sales Consultant for further details.

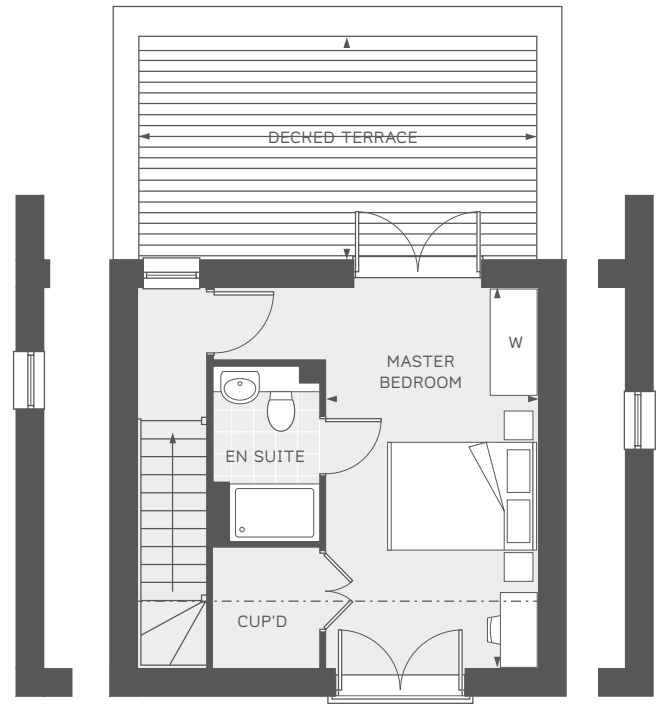


COUNTRYSIDE
Places People Love

THE WILBRAHAM

PLOTS 162-168 & 187-192

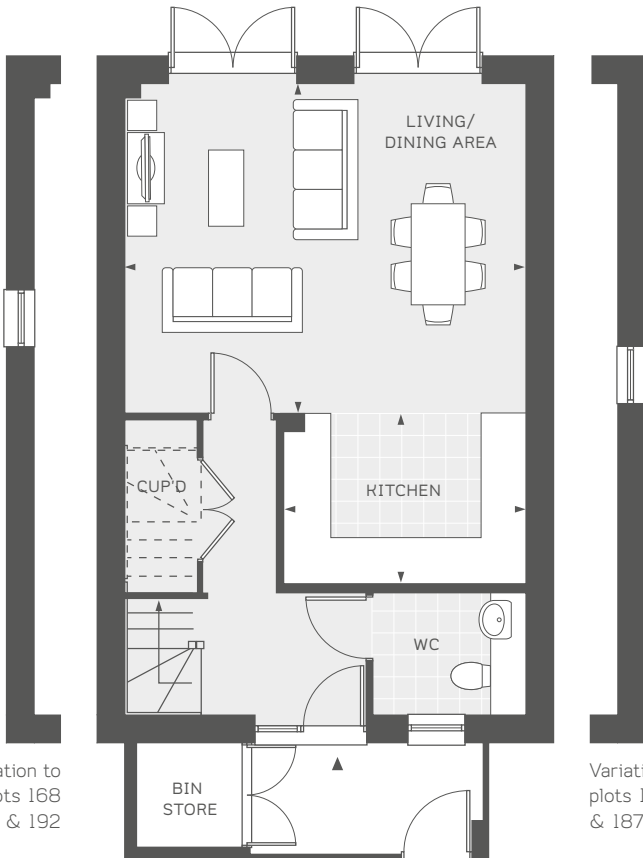
LIVING/DINING AREA	5.55m x 4.58m	18'2" x 15'0"
KITCHEN	3.33m x 2.38m	10'11" x 7'9"
MASTER BEDROOM	5.30m x 2.89m	17'4" x 9'5"
BEDROOM 2	4.68m x 3.36m	15'4" x 11'0"
BEDROOM 3	4.01m x 3.36m	13'1" x 11'0"
DECKED TERRACE	5.55m x 3.09m	18'2" x 10'1"
TOTAL INTERNAL AREA	127 sq.m	1371 sq.ft



Variation to plots 168 & 192

Variation to plots 162 & 187

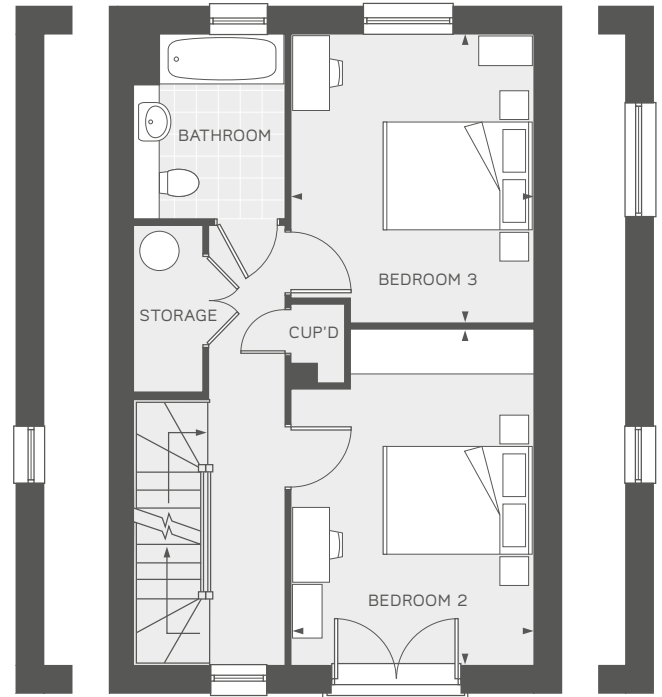
Second Floor



Variation to plots 168 & 192

Variation to plots 162 & 187

Ground Floor



Variation to plots 168 & 192

Variation to plots 162 & 187

First Floor

--- Reduced head height. W – Wardrobe. Please ask Sales Consultants for detailed information.

All room sizes are approximate showing maximum dimensions which have been taken into the kitchen units. They are to finished measurements and are not intended for carpet sizes or items of furniture. Countryside operates a policy of continuous product development and all room layouts may be subject to minor modifications. Kitchen and bathroom layouts shown are indicative only. Please ask Sales Consultants for detailed information regarding specific properties.



COUNTRYSIDE
Places People Love



BROOK VALLEY GARDENS

CHIPPING BARNET · EN5



THE CAISHO

PLOTS 193-198 & 210-212

A two storey three bedroom house featuring an open plan kitchen/dining area with French doors leading to the garden. The master bedroom features an en suite and private balcony.

Computer generated image. All elevations, architectural detailing and landscaping are indicative only and may vary from the illustration. Please speak to a Sales Consultant for further details.

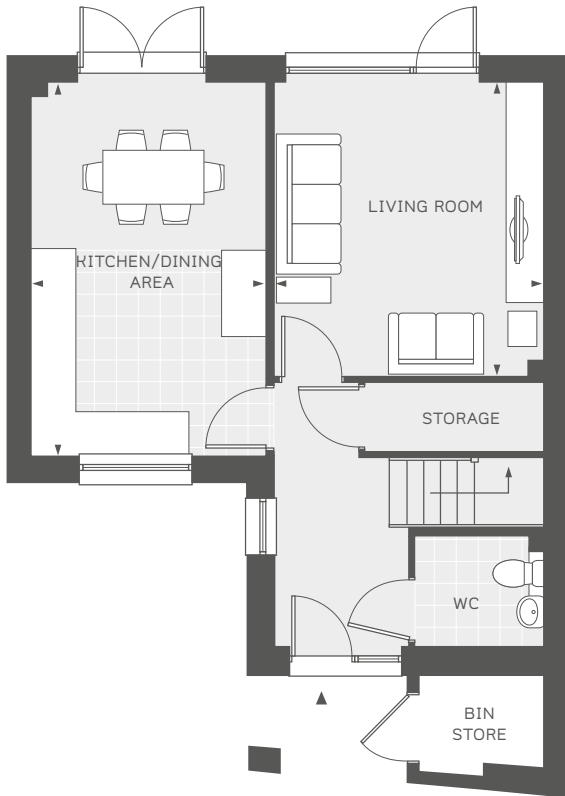


COUNTRYSIDE
Places People Love

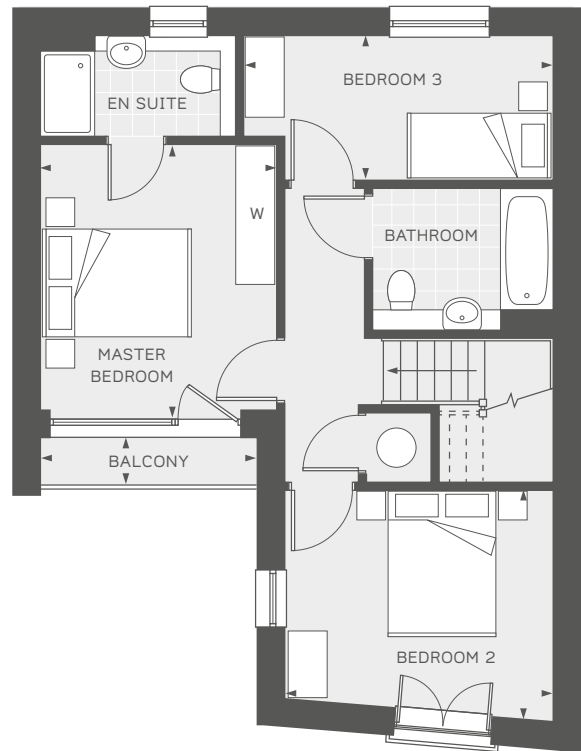
THE CAISHO

PLOTS 193-198 & 210-212

LIVING ROOM	4.05m x 3.70m	13'3" x 12'1"
KITCHEN/DINING AREA	5.15m x 3.20m	16'10" x 10'6"
MASTER BEDROOM	3.70m x 3.30m	12'1" x 10'10"
BEDROOM 2	3.70m x 3.20m	12'1" x 10'6"
BEDROOM 3	4.40m x 1.95m	14'5" x 6'4"
BALCONY	2.90m x 0.65m	9'6" x 2'1"
TOTAL INTERNAL AREA	101 sq.m	1087 sq.ft



Ground Floor



First Floor

W – Wardrobe. Please ask Sales Consultants for detailed information.

All room sizes are approximate showing maximum dimensions which have been taken into the kitchen units. They are to finished measurements and are not intended for carpet sizes or items of furniture. Countryside operates a policy of continuous product development and all room layouts may be subject to minor modifications. Kitchen and bathroom layouts shown are indicative only. Please ask Sales Consultants for detailed information regarding specific properties.



COUNTRYSIDE
Places People Love