



WARDIAN

LONDON

WEST TOWER









# WEST TOWER PLANS



Four Seasons Hotel

WEST FERRY  
ROUNDABOUT

1

2

3



CABOT  
SQUARE

13

9

8

7

6

MIDDLE DOCK



16

JUBILEE  
PARK

15

18

10

Britannia  
Hotel

Novotel

FOOT  
BRIDGE

SOUTH DOCK

Hilton  
Hotel

WARDIAN  
LONDON

RIVER THAMES



## LOCATION

# THE GREAT ESTATE

Canary Wharf is home to a wealth of restaurants and boutique shops offering luxury fashion, jewellery and more, while many of the world's most trusted banks can be reached by foot in just a few minutes.

## PROFESSIONAL SERVICES AND BANKS

1 Crédit Suisse	5 KPMG	9 Morgan Stanley
2 Barclays	6 Citi Group	10 JP Morgan
3 Bank of America	7 Thompson Reuters	11 Moody's Investors Services Ltd
4 HSBC	8 Barclays Capital	12 Clifford Chance

## SHOPPING

13 Cabot Place AQUASCUTUM HUGO BOSS HACKETT MONT BLANC DUNHILL	14 Canada Place TIFFANY PAUL SMITH CHURCH'S SHOES THOMAS PINK JAEGER	15 Jubilee Place MICHAEL KORS JO MALONE SANDRO PARIS REISS KAREN MILLEN
--	--	---

## TRANSPORT CONNECTIONS

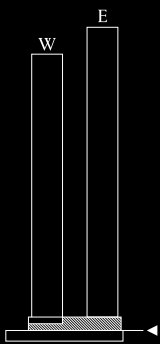
16 Canary Wharf Underground	18 Heron Quays DLR	20 Crossrail (Operational from 2018)
17 Canary Wharf DLR	19 South Quay DLR	21 Canary Wharf Bus (South)



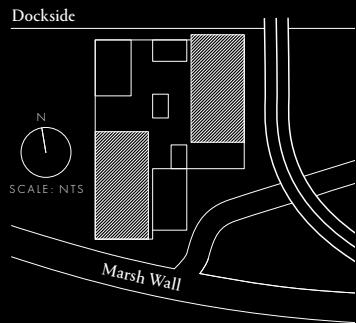
EAST & WEST TOWER  
LEVEL

G

POSITION



LOCATION



DISCLAIMER

This brochure and the information contained in it does not form part of any contract, and while reasonable effort has been made to ensure accuracy, this cannot be guaranteed and no representation or warranty is made in that regard. Apartment designs and layouts are indicative only and may change. Gardens do not include any planters or paviers as indicated on the floor plans. The specification of the apartments is the anticipated specification as at the date this brochure was prepared, but may be subject to change in accordance with permitted variances under the apartment sale contracts. Computer generated images and photos are indicative only. All sales remain subject to contract. All information regarding prospective commercial or retail tenants represents current intention only, and the final identity of the tenants may change. Fixtures and furnishings including wall panelling and wall dressings shown in Computer Generated Images and photos are not standard or included in sales. Please consult your sales contract for information. Warden London and Warden are marketing names only and will not necessarily form part of the approved postal address. Neither the agents nor any person in their employ has any authority to make or give any representation, warranty or guarantee (whether written or oral) in respect of or in relation to the development (or any parts thereof). Living Room dimensions are measured from the internal lining of the solid façade panels (not to glazing line), up to the kitchen worktop or opposite partition wall (whichever applies). They are also taken to party walls. Bedroom dimensions are measured between internal lining of the solid façade panels and to the party or partition wall (whichever applies). Where applicable, dimensions are taken to the wardrobe fronts, or an opposite partition wall. In bedrooms with walk-in wardrobes, the length of the room is measured to include the depth of the corridor up to the bathroom entrance door.

East  
Tower

Restaurant

◀ Dockside

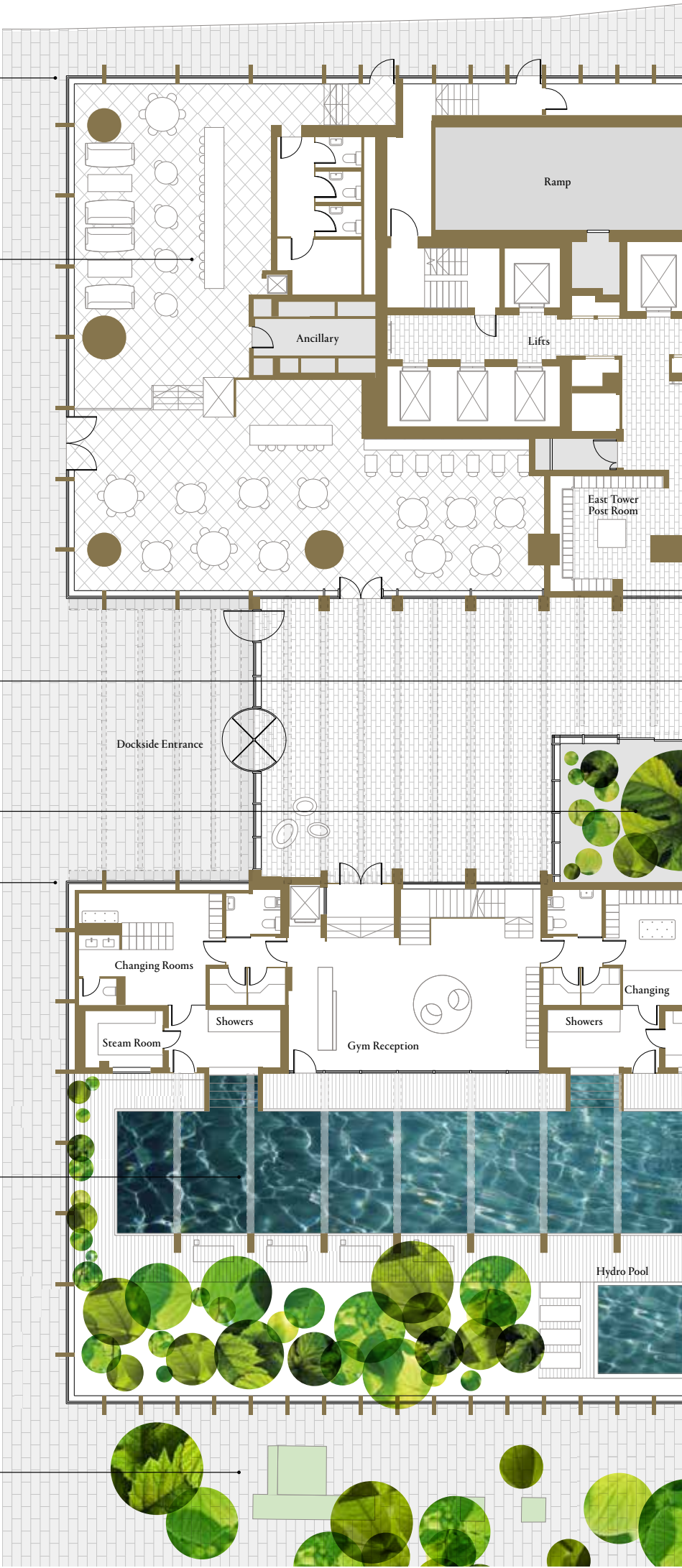
Wardian Case

Wardian Case

West  
Tower

Heated Open-air  
Swimming Pool

Western Garden



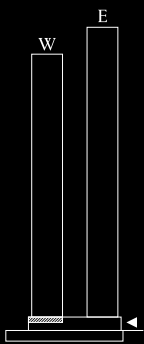




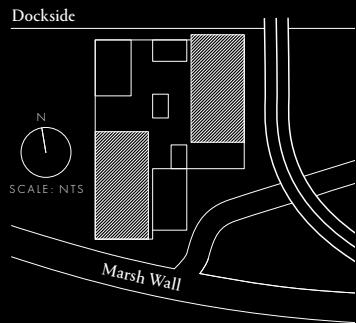
EAST & WEST TOWER  
LEVEL

1

POSITION



LOCATION



DISCLAIMER

This brochure and the information contained in it does not form part of any contract, and while reasonable effort has been made to ensure accuracy, this cannot be guaranteed and no representation or warranty is made in that regard. Apartment designs and layouts are indicative only and may change. Gardens do not include any planters or paviers as indicated on the floor plans. The specification of the apartments is the anticipated specification as at the date this brochure was prepared, but may be subject to change in accordance with permitted variances under the apartment sale contracts. Computer generated images and photos are indicative only. All sales remain subject to contract. All information regarding prospective commercial or retail tenants represents current intention only, and the final identity of the tenants may change. Fixtures and furnishings including wall panelling and wall dressings shown in Computer Generated Images and photos are not standard or included in sales. Please consult your sales contract for information. Wardian London and Wardian are marketing names only and will not necessarily form part of the approved postal address. Neither the agents nor any person in their employ has any authority to make or give any representation, warranty or guarantee (whether written or oral) in respect of or in relation to the development (or any parts thereof). Living Room dimensions are measured from the internal lining of the solid façade panels (not to glazing line), up to the kitchen worktop or opposite partition wall (whichever applies). They are also taken to party walls. Bedroom dimensions are measured between internal lining of the solid façade panels and to the party or partition wall (whichever applies). Where applicable, dimensions are taken to the wardrobe fronts, or an opposite partition wall. In bedrooms with walk-in wardrobes, the length of the room is measured to include the depth of the corridor up to the bathroom entrance door.

East  
Tower

Wardian Case

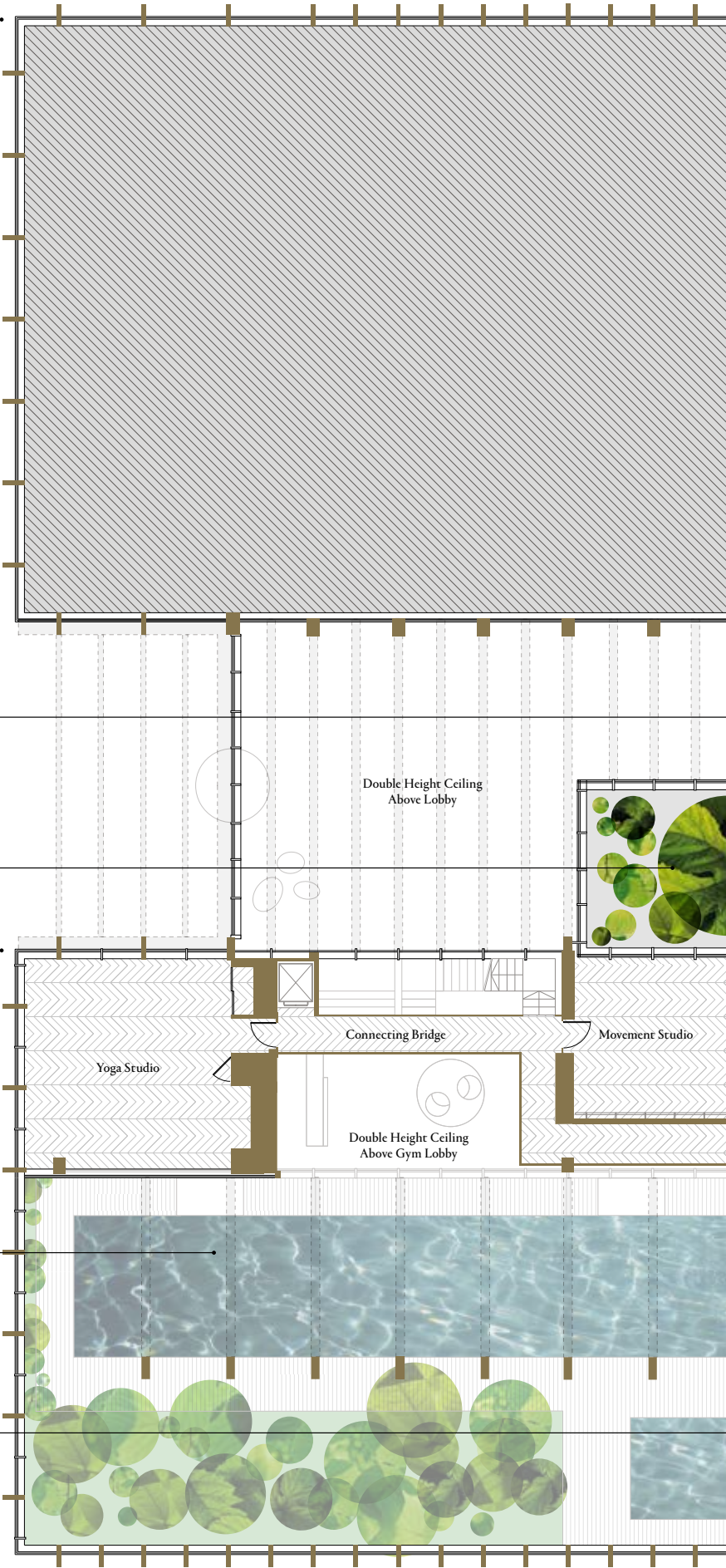
◀ Dockside

Wardian Case

West  
Tower

Roof Opening  
to Heated Open-air  
Swimming Pool

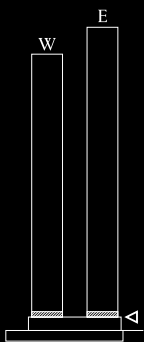
Residents' Cinema



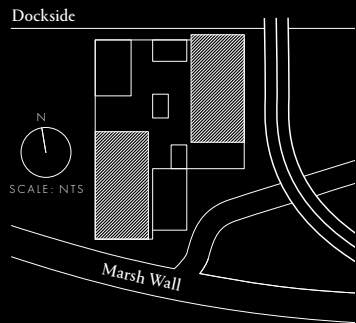


# 2

## POSITION



## LOCATION



## DISCLAIMER

This brochure and the information contained in it does not form part of any contract, and while reasonable effort has been made to ensure accuracy, this cannot be guaranteed and no representation or warranty is made in that regard. Apartment designs and layouts are indicative only and may change. Gardens do not include any planters or paviers as indicated on the floor plans. The specification of the apartments is the anticipated specification as at the date this brochure was prepared, but may be subject to change in accordance with permitted variances under the apartment sale contracts. Computer generated images and photos are indicative only. All sales remain subject to contract. All information regarding prospective commercial or retail tenants represents current intention only, and the final identity of the tenants may change. Fixtures and furnishings including wall panelling and wall dressings shown in Computer Generated Images and photos are not standard or included in sales. Please consult your sales contract for information. Warden London and Warden are marketing names only and will not necessarily form part of the approved postal address. Neither the agents nor any person in their employ has any authority to make or give any representation, warranty or guarantee (whether written or oral) in respect of or in relation to the development (or any parts thereof). Living Room dimensions are measured from the internal lining of the solid façade panels (not to glazing line), up to the kitchen worktop or opposite partition wall (whichever applies). They are also taken to party walls. Bedroom dimensions are measured between internal lining of the solid façade panels and to the party or partition wall (whichever applies). Where applicable, dimensions are taken to the wardrobe fronts, or an opposite partition wall. In bedrooms with walk-in wardrobes, the length of the room is measured to include the depth of the corridor up to the bathroom entrance door.

## Podium Garden

### East Tower

Outdoor Play Area

Indoor Play Area

Wardian Case

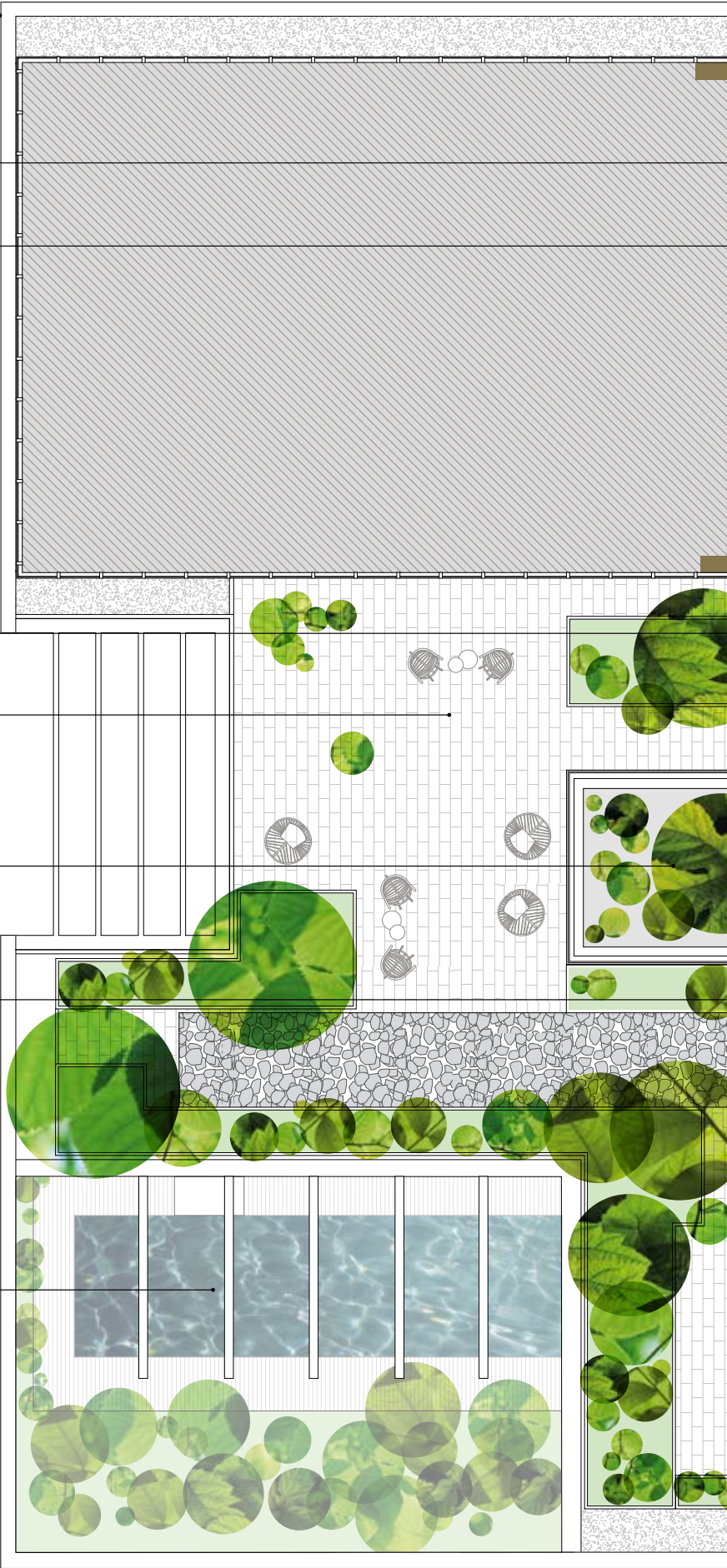
Events Area

◀ Dockside

Wardian Case

### West Tower

Roof Opening to Heated Open-air Swimming Pool





Marsh Wall ▶

Outdoor  
Podium Garden

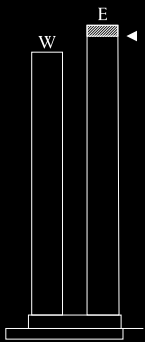
Outdoor Lounge

Indoor Winter  
Garden

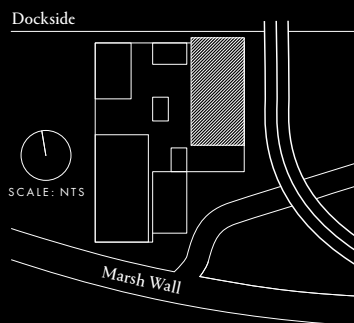


# Sky Lounge

## POSITION



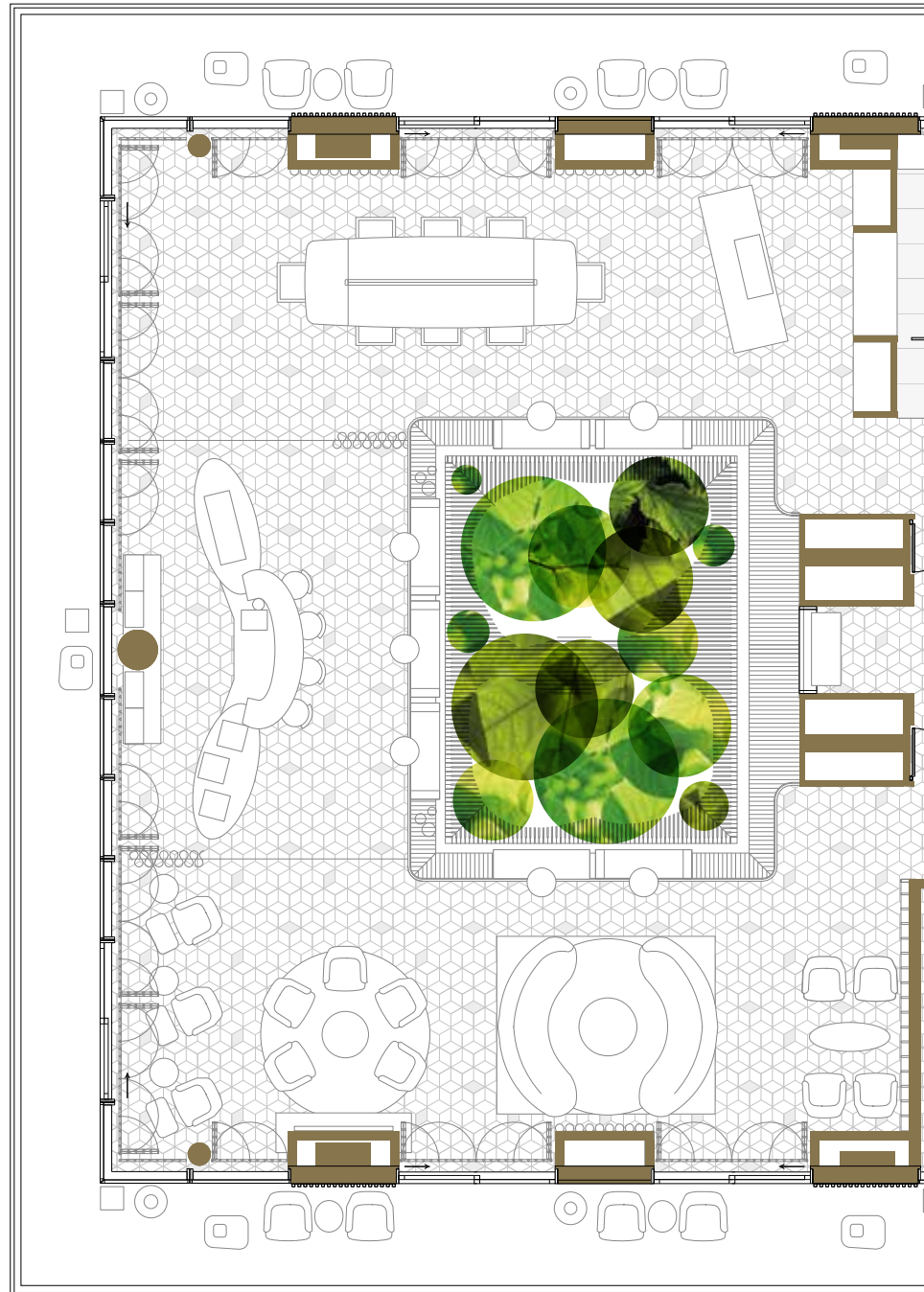
## LOCATION



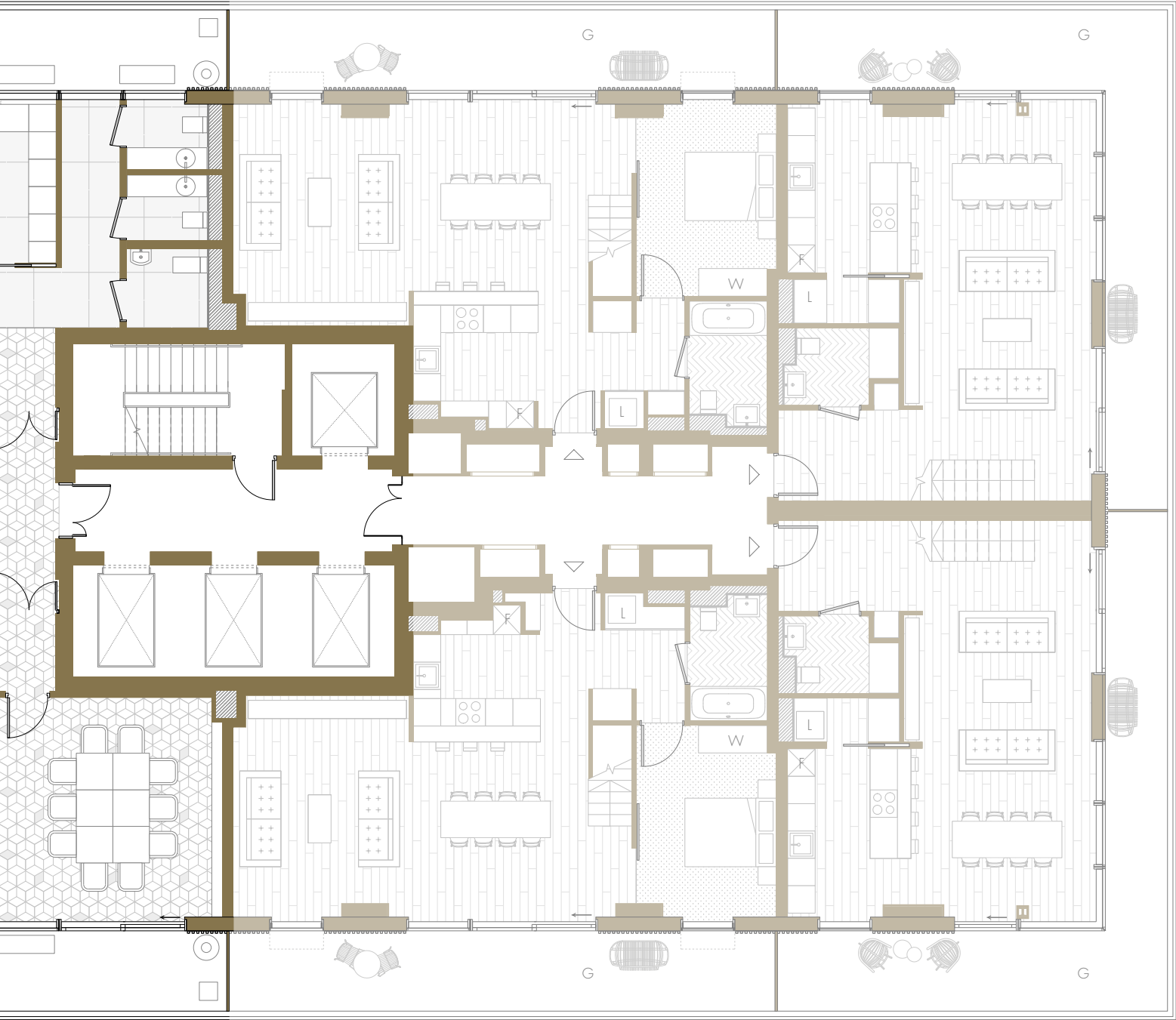
## DISCLAIMER

This brochure and the information contained in it does not form part of any contract, and while reasonable effort has been made to ensure accuracy, this cannot be guaranteed and no representation or warranty is made in that regard. Apartment designs and layouts are indicative only and may change. Gardens do not include any planters or paviers as indicated on the floor plans. The specification of the apartments is the anticipated specification as at the date this brochure was prepared, but may be subject to change in accordance with permitted variances under the apartment sale contracts. Computer generated images and photos are indicative only. All sales remain subject to contract. All information regarding prospective commercial or retail tenants represents current intention only, and the final identity of the tenants may change. Fixtures and furnishings including wall panelling and wall dressings shown in Computer Generated Images and photos are not standard or included in sales. Please consult your sales contract for information. Warden London and Warden are marketing names only and will not necessarily form part of the approved postal address. Neither the agents nor any person in their employ has any authority to make or give any representation, warranty or guarantee (whether written or oral) in respect of or in relation to the development (or any parts thereof). Living Room dimensions are measured from the internal lining of the solid façade panels (not to glazing line), up to the kitchen worktop or opposite partition wall (whichever applies). They are also taken to party walls. Bedroom dimensions are measured between internal lining of the solid façade panels and to the party or partition wall (whichever applies). Where applicable, dimensions are taken to the wardrobe fronts, or an opposite partition wall. In bedrooms with walk-in wardrobes, the length of the room is measured to include the depth of the corridor up to the bathroom entrance door.

◀ Dockside







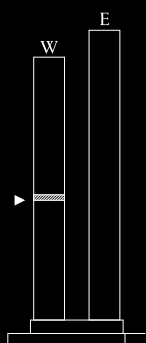
WEST TOWER  
LEVEL

# 24

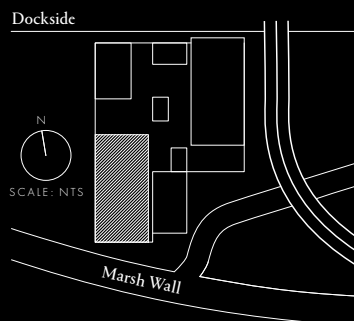
LEGEND

- W Wardrobe  
F Fridge  
L Laundry  
G Balcony Garden

POSITION



LOCATION

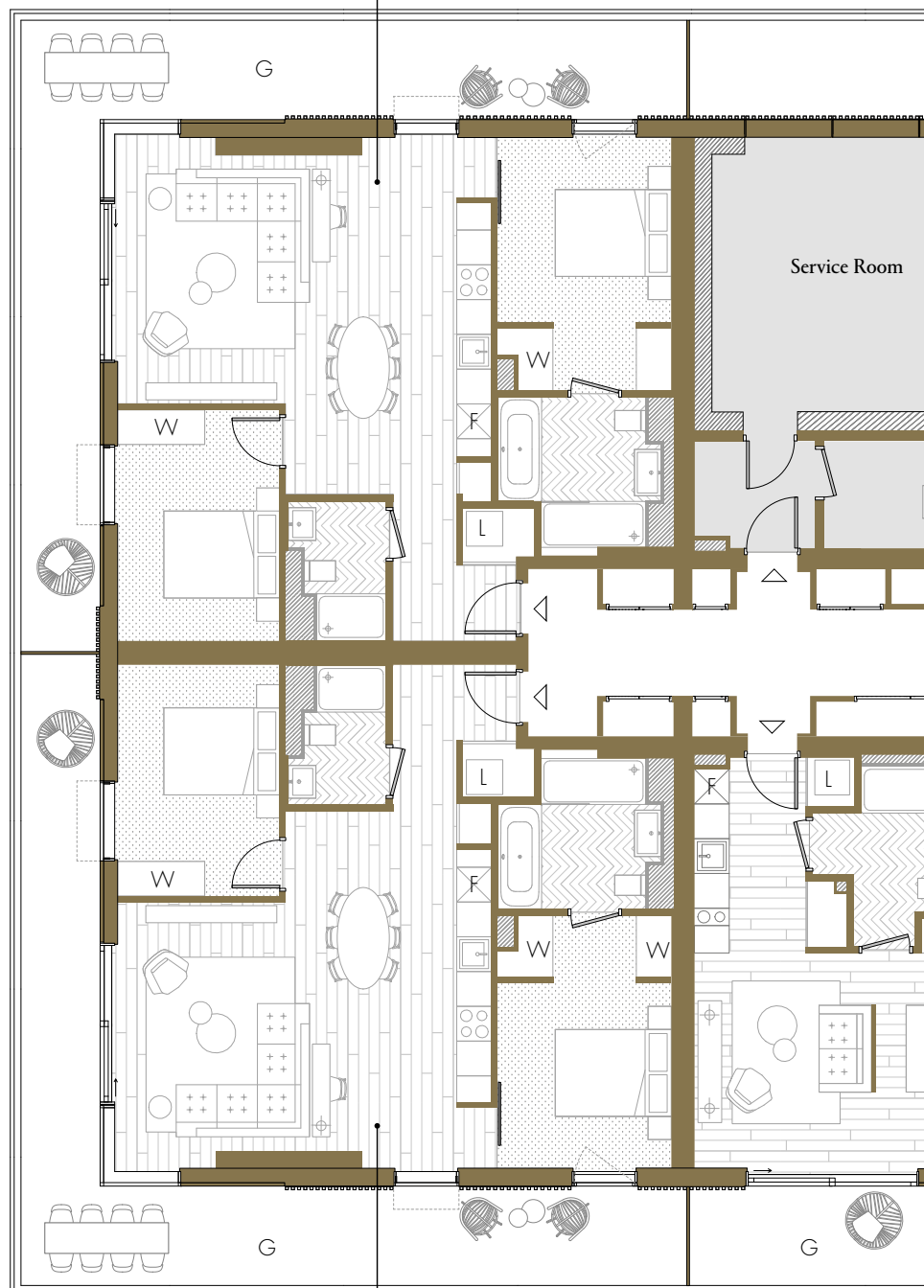


DISCLAIMER

This brochure and the information contained in it does not form part of any contract, and while reasonable effort has been made to ensure accuracy, this cannot be guaranteed and no representation or warranty is made in that regard. Apartment designs and layouts are indicative only and may change. Gardens do not include any planters or paviors as indicated on the floor plans. The specification of the apartments is the anticipated specification as at the date this brochure was prepared, but may be subject to change in accordance with permitted variances under the apartment sale contracts. Computer generated images and photos are indicative only. All sales remain subject to contract. All information regarding prospective commercial or retail tenants represents current intention only, and the final identity of the tenants may change. Fixtures and furnishings including wall panelling and wall dressings shown in Computer Generated Images and photos are not standard or included in sales. Please consult your sales contract for information. Wardian London and Wardian are marketing names only and will not necessarily form part of the approved postal address. Neither the agents nor any person in their employ has any authority to make or give any representation, warranty or guarantee (whether written or oral) in respect of or in relation to the development (or any parts thereof). Living Room dimensions are measured from the internal lining of the solid façade panels (not to glazing line), up to the kitchen worktop or opposite partition wall (whichever applies). They are also taken to party walls. Bedroom dimensions are measured between internal lining of the solid façade panels and to the party or partition wall (whichever applies). Where applicable, dimensions are taken to the wardrobe fronts, or an opposite partition wall. In bedrooms with walk-in wardrobes, the length of the room is measured to include the depth of the corridor up to the bathroom entrance door.

W2407 Two Bedroom

Internal Area  
78.3 sq m / 843 sq ft  
Living Area  
5850 x 4600 mm  
Bedroom 1  
3005 x 4365 mm  
Bedroom 2  
2800 x 3400 mm  
Garden  
32.1 sq m / 346 sq ft

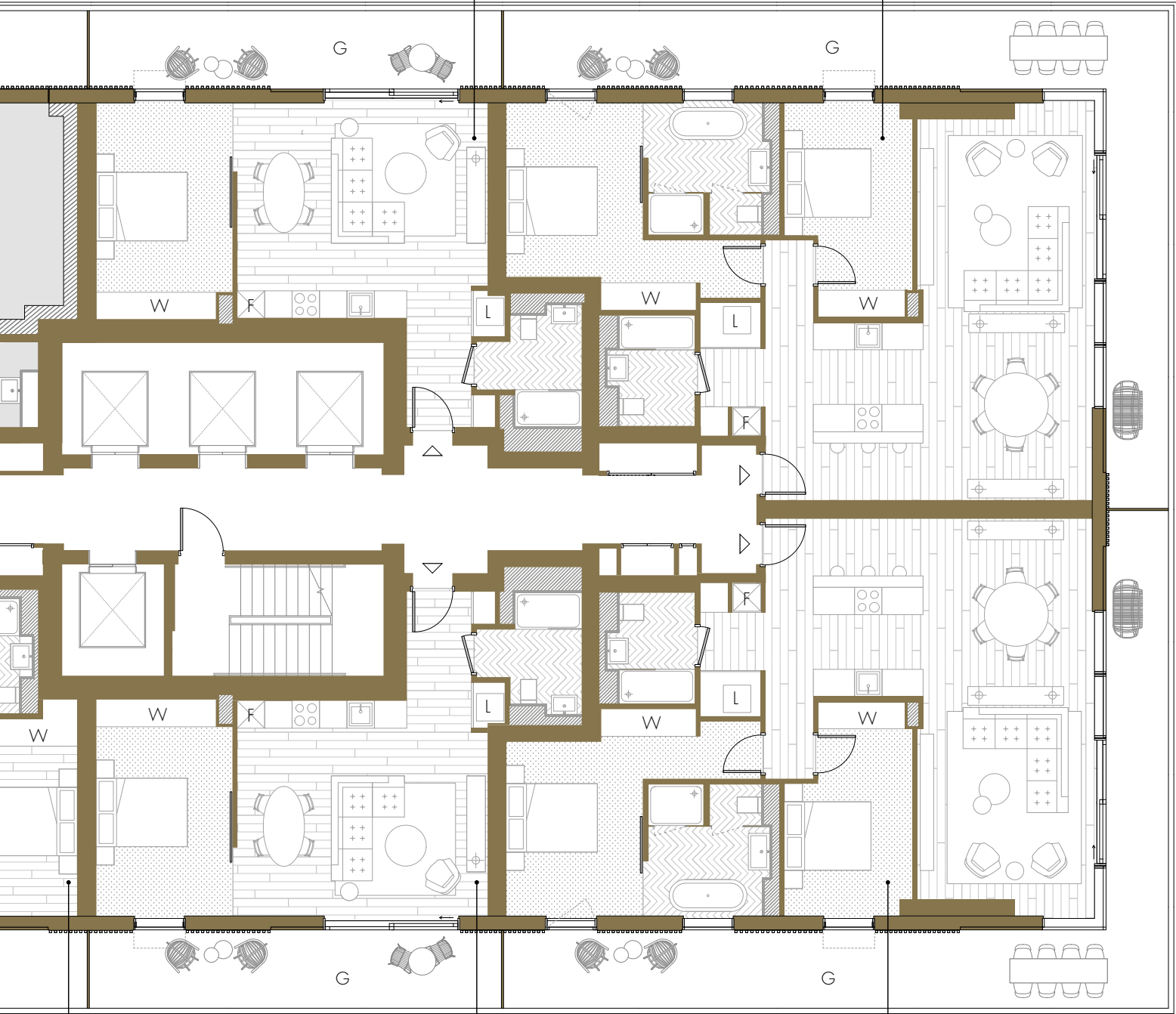
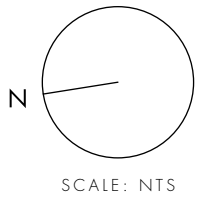


Two Bedroom

Internal Area  
78.3 sq m / 843 sq ft  
Living Area  
5850 x 4600 mm  
Bedroom 1  
3005 x 4365 mm  
Bedroom 2  
2800 x 3400 mm  
Garden  
32.1 sq m / 346 sq ft

**W2401 One Bedroom**  
Internal Area  
50.9 sq m / 548 sq ft  
Living Area  
5480 x 4110 mm  
Bedroom 1  
3000 x 4145 mm  
Garden  
15.2 sq m / 164 sq ft

**W2402 Two Bedroom**  
Internal Area  
94.7 sq m / 1019 sq ft  
Living Area  
3700 x 8700 mm  
Bedroom 1  
3000 x 3820 mm  
Bedroom 2  
2800 x 4100 mm  
Garden  
37.2 sq m / 401 sq ft



Marsh Wall ▶

**W2405 Suite**  
Internal Area  
38.1 sq m / 410 sq ft  
Living Area  
5650 x 3720 mm  
Garden  
10.1 sq m / 109 sq ft

**W2404 One Bedroom**  
Internal Area  
50.9 sq m / 548 sq ft  
Living Area  
5480 x 4110 mm  
Bedroom 1  
3000 x 4145 mm  
Garden  
15.2 sq m / 164 sq ft

**W2403 Two Bedroom**  
Internal Area  
94.7 sq m / 1019 sq ft  
Living Area  
3700 x 8700 mm  
Bedroom 1  
3000 x 3820 mm  
Bedroom 2  
2800 x 4100 mm  
Garden  
37.2 sq m / 401 sq ft

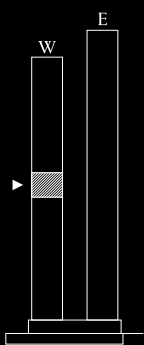
WEST TOWER  
LEVEL

# 25-29

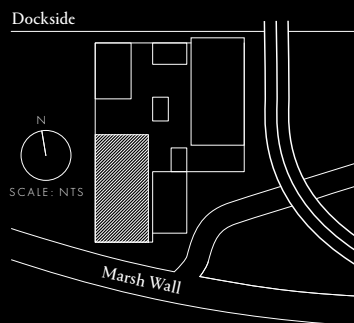
LEGEND

- W Wardrobe  
F Fridge  
L Laundry  
G Balcony Garden

POSITION



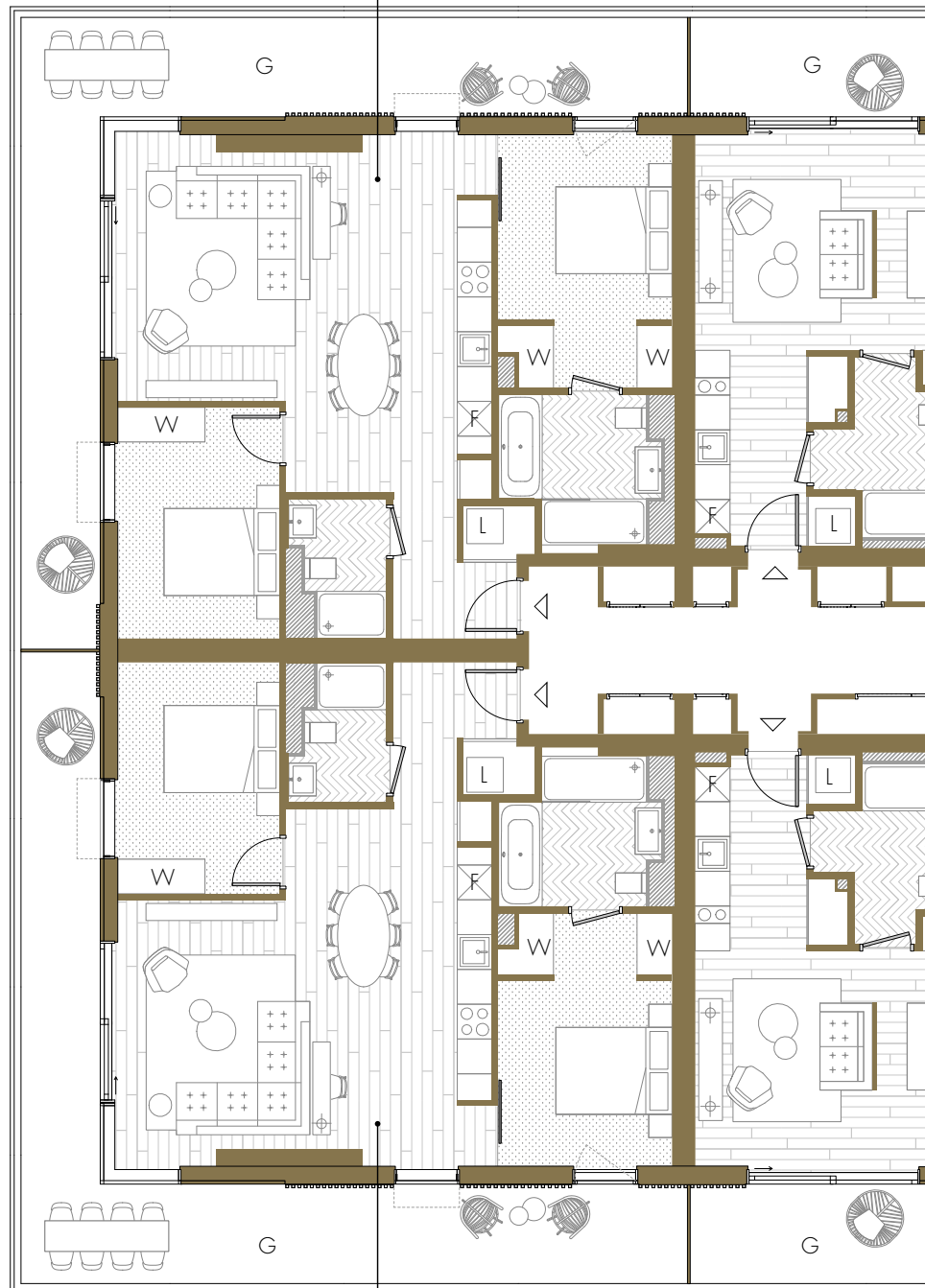
LOCATION



DISCLAIMER

This brochure and the information contained in it does not form part of any contract, and while reasonable effort has been made to ensure accuracy, this cannot be guaranteed and no representation or warranty is made in that regard. Apartment designs and layouts are indicative only and may change. Gardens do not include any planters or paviors as indicated on the floor plans. The specification of the apartments is the anticipated specification as at the date this brochure was prepared, but may be subject to change in accordance with permitted variances under the apartment sale contracts. Computer generated images and photos are indicative only. All sales remain subject to contract. All information regarding prospective commercial or retail tenants represents current intention only, and the final identity of the tenants may change. Fixtures and furnishings including wall panelling and wall dressings shown in Computer Generated Images and photos are not standard or included in sales. Please consult your sales contract for information. Warden London and Warden are marketing names only and will not necessarily form part of the approved postal address. Neither the agents nor any person in their employ has any authority to make or give any representation, warranty or guarantee (whether written or oral) in respect of or in relation to the development (or any parts thereof). Living Room dimensions are measured from the internal lining of the solid façade panels (not to glazing line), up to the kitchen worktop or opposite partition wall (whichever applies). They are also taken to party walls. Bedroom dimensions are measured between internal lining of the solid façade panels and to the party or partition wall (whichever applies). Where applicable, dimensions are taken to the wardrobe fronts, or an opposite partition wall. In bedrooms with walk-in wardrobes, the length of the room is measured to include the depth of the corridor up to the bathroom entrance door.

- W2507 Two Bedroom  
W2607 Internal Area  
78.3 sq m / 843 sq ft  
W2707 Living Area  
5850 x 4600 mm  
W2807 Bedroom 1  
3005 x 4365 mm  
W2907 Bedroom 2  
2800 x 3400 mm  
Garden  
32.1 sq m / 346 sq ft



Two Bedroom

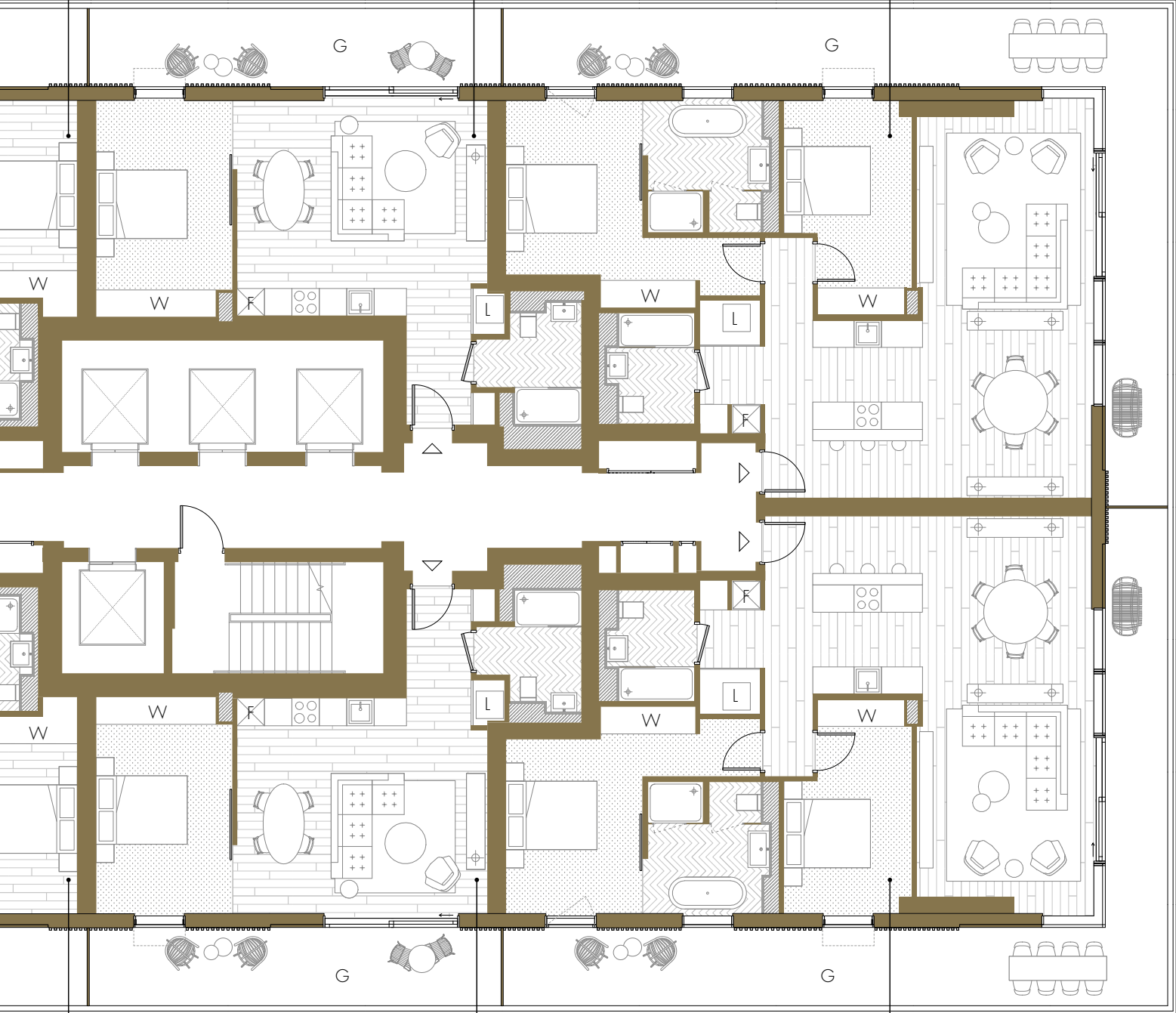
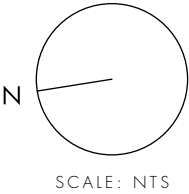
- Internal Area  
78.3 sq m / 843 sq ft  
Living Area  
5850 x 4600 mm  
Bedroom 1  
3005 x 4365 mm  
Bedroom 2  
2800 x 3400 mm  
Garden  
32.1 sq m / 346 sq ft

- W2506  
W2606  
W2706  
W2806  
W2906

W2508 Suite  
W2608 Internal Area  
38.1 sq m / 410 sq ft  
W2708 Living Area  
W2808 5650 x 3720 mm  
W2908 Garden  
10.1 sq m / 109 sq ft

W2501 One Bedroom  
W2601 Internal Area  
50.9 sq m / 548 sq ft  
W2701 Living Area  
W2801 5480 x 4110 mm  
W2901 Bedroom 1  
3000 x 4145 mm  
Garden  
15.2 sq m / 164 sq ft

W2502 Two Bedroom  
W2602 Internal Area  
94.7 sq m / 1019 sq ft  
W2702 Living Area  
W2802 3700 x 8700 mm  
W2902 Bedroom 1  
3000 x 3820 mm  
Bedroom 2  
2800 x 4100 mm  
Garden  
37.2 sq m / 401 sq ft



Marsh Wall ▶

W2505 Suite  
W2605 Internal Area  
38.1 sq m / 410 sq ft  
W2705 Living Area  
W2805 5650 x 3720 mm  
W2905 Garden  
10.1 sq m / 109 sq ft

W2504 One Bedroom  
W2604 Internal Area  
50.9 sq m / 548 sq ft  
W2704 Living Area  
W2804 5480 x 4110 mm  
W2904 Bedroom 1  
3000 x 4145 mm  
Garden  
15.2 sq m / 164 sq ft

W2503 Two Bedroom  
W2603 Internal Area  
94.7 sq m / 1019 sq ft  
W2703 Living Area  
W2803 3700 x 8700 mm  
W2903 Bedroom 1  
3000 x 3820 mm  
Bedroom 2  
2800 x 4100 mm  
Garden  
37.2 sq m / 401 sq ft



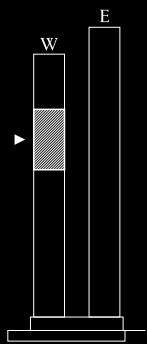
WEST TOWER  
LEVEL

# 30-39

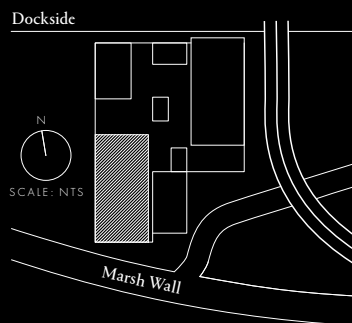
LEGEND

- W Wardrobe  
F Fridge  
L Laundry  
G Balcony Garden

POSITION



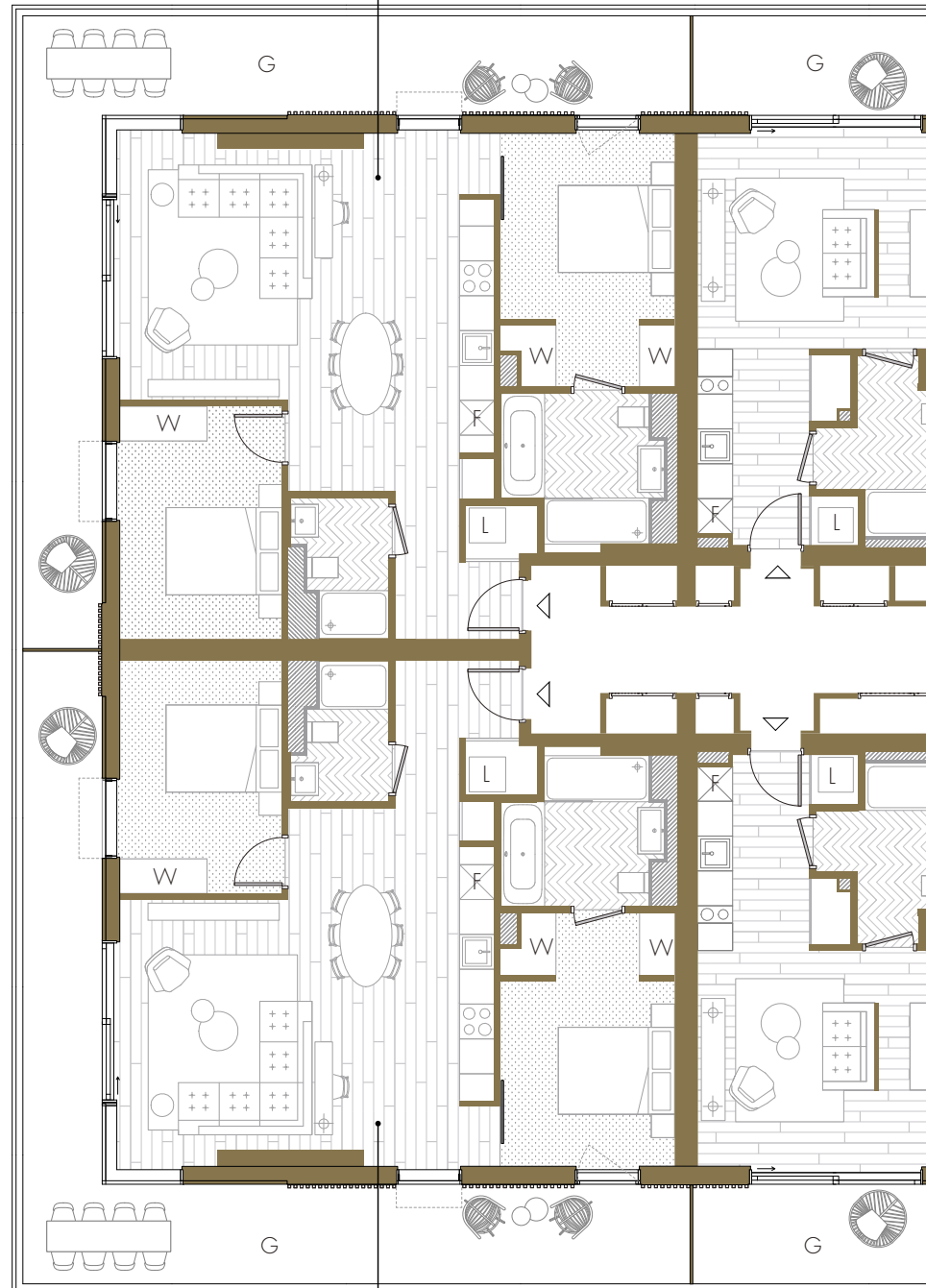
LOCATION



DISCLAIMER

This brochure and the information contained in it does not form part of any contract, and while reasonable effort has been made to ensure accuracy, this cannot be guaranteed and no representation or warranty is made in that regard. Apartment designs and layouts are indicative only and may change. Gardens do not include any planters or paviors as indicated on the floor plans. The specification of the apartments is the anticipated specification as at the date this brochure was prepared, but may be subject to change in accordance with permitted variances under the apartment sale contracts. Computer generated images and photos are indicative only. All sales remain subject to contract. All information regarding prospective commercial or retail tenants represents current intention only, and the final identity of the tenants may change. Fixtures and furnishings including wall panelling and wall dressings shown in Computer Generated Images and photos are not standard or included in sales. Please consult your sales contract for information. Warden London and Warden are marketing names only and will not necessarily form part of the approved postal address. Neither the agents nor any person in their employ has any authority to make or give any representation, warranty or guarantee (whether written or oral) in respect of or in relation to the development (or any parts thereof). Living Room dimensions are measured from the internal lining of the solid façade panels (not to glazing line), up to the kitchen worktop or opposite partition wall (whichever applies). They are also taken to party walls. Bedroom dimensions are measured between internal lining of the solid façade panels and to the party or partition wall (whichever applies). Where applicable, dimensions are taken to the wardrobe fronts, or an opposite partition wall. In bedrooms with walk-in wardrobes, the length of the room is measured to include the depth of the corridor up to the bathroom entrance door.

- W3007 Two Bedroom  
W3107 Internal Area  
78.5 sq m / 845 sq ft  
W3207 Living Area  
5850 x 4600 mm  
W3407 Bedroom 1  
3005 x 4365 mm  
W3507 Bedroom 2  
2800 x 3425 mm  
W3607 Garden  
32.1 sq m / 346 sq ft  
W3707  
W3807  
W3907

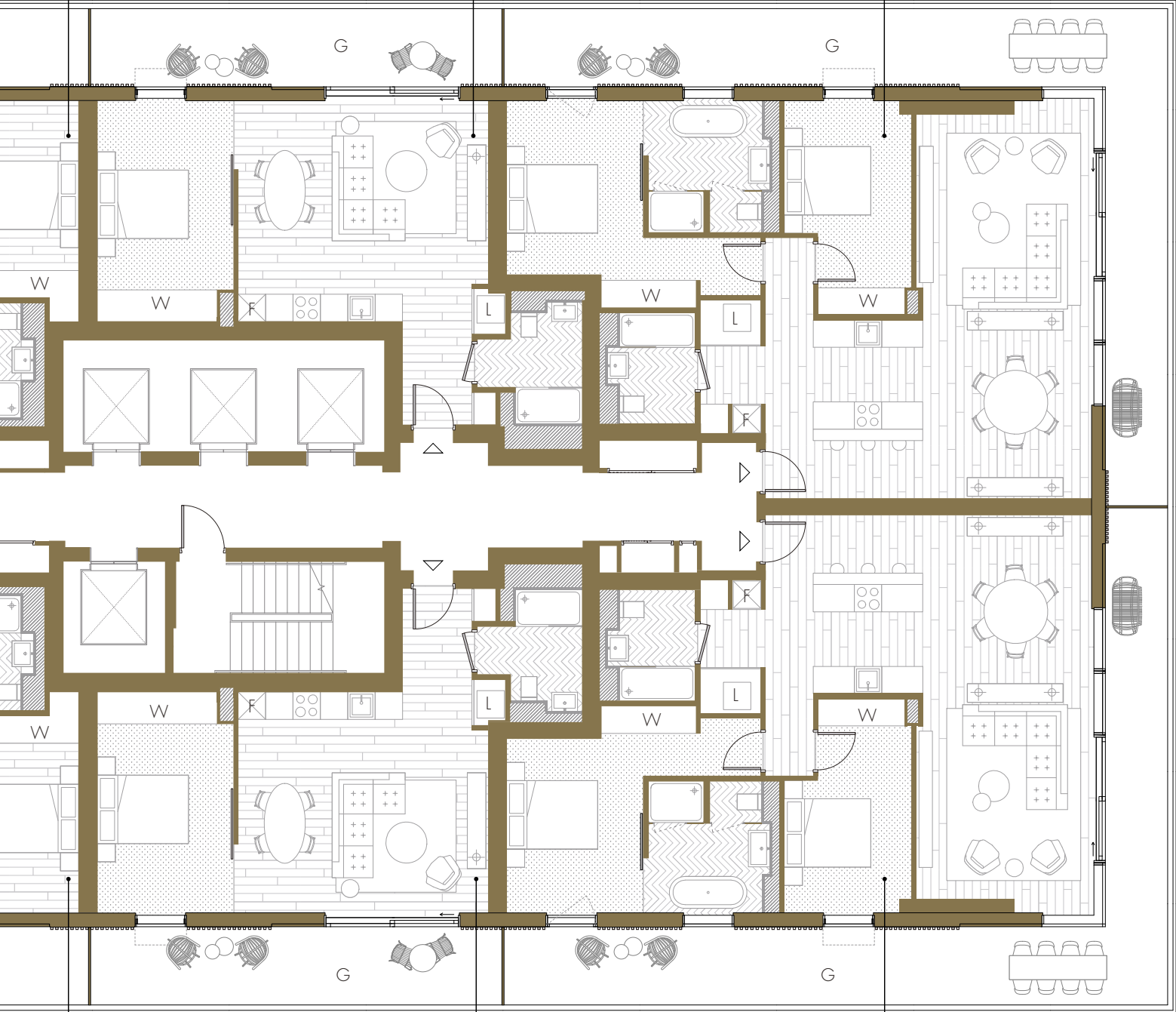
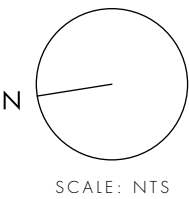


- W3006 Two Bedroom  
W3106 Internal Area  
78.5 sq m / 845 sq ft  
W3206 Living Area  
5850 x 4600 mm  
W3406 Bedroom 1  
3005 x 4365 mm  
W3506 Bedroom 2  
2800 x 3425 mm  
W3606 Garden  
32.1 sq m / 346 sq ft  
W3706  
W3806  
W3906

W3008 Suite  
W3108 Internal Area  
38.4 sq m / 413 sq ft  
W3208 Living Area  
W3308 5650 x 3720 mm  
W3408 Garden  
W3508 10.1 sq m / 109 sq ft  
W3608  
W3708  
W3808  
W3908

W3001 One Bedroom  
W3101 Internal Area  
51.8 sq m / 558 sq ft  
W3201 Living Area  
W3301 5480 x 4110 mm  
W3401 Bedroom 1  
W3501 3000 x 4145 mm  
W3601 Garden  
W3701 15.2 sq m / 164 sq ft  
W3801  
W3901

W3002 Two Bedroom  
W3102 Internal Area  
94.9 sq m / 1022 sq ft  
W3202 Living Area  
W3302 3700 x 8700 mm  
W3402 Bedroom 1  
W3502 3000 x 3820 mm  
W3602 Bedroom 2  
W3702 2800 x 4100 mm  
W3802 Garden  
W3902 37.2 sq m / 401 sq ft



Marsh Wall ▶

W3005 Suite  
W3105 Internal Area  
38.4 sq m / 413 sq ft  
W3205 Living Area  
W3305 5650 x 3720 mm  
W3405 Garden  
W3505 10.1 sq m / 109 sq ft  
W3605  
W3705  
W3805  
W3905

W3004 One Bedroom  
W3104 Internal Area  
51.8 sq m / 558 sq ft  
W3204 Living Area  
W3304 5480 x 4110 mm  
W3404 Bedroom 1  
W3504 3000 x 4145 mm  
W3604 Garden  
W3704 15.2 sq m / 164 sq ft  
W3804  
W3904

W3003 Two Bedroom  
W3103 Internal Area  
94.9 sq m / 1022 sq ft  
W3203 Living Area  
W3303 3700 x 8700 mm  
W3403 Bedroom 1  
W3503 3000 x 3820 mm  
W3603 Bedroom 2  
W3703 2800 x 4100 mm  
W3803 Garden  
W3903 37.2 sq m / 401 sq ft

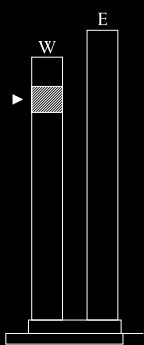
WEST TOWER  
LEVEL

# 40-44

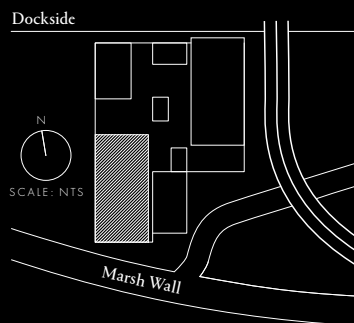
## LEGEND

W Wardrobe  
F Fridge  
L Laundry  
G Balcony Garden

## POSITION



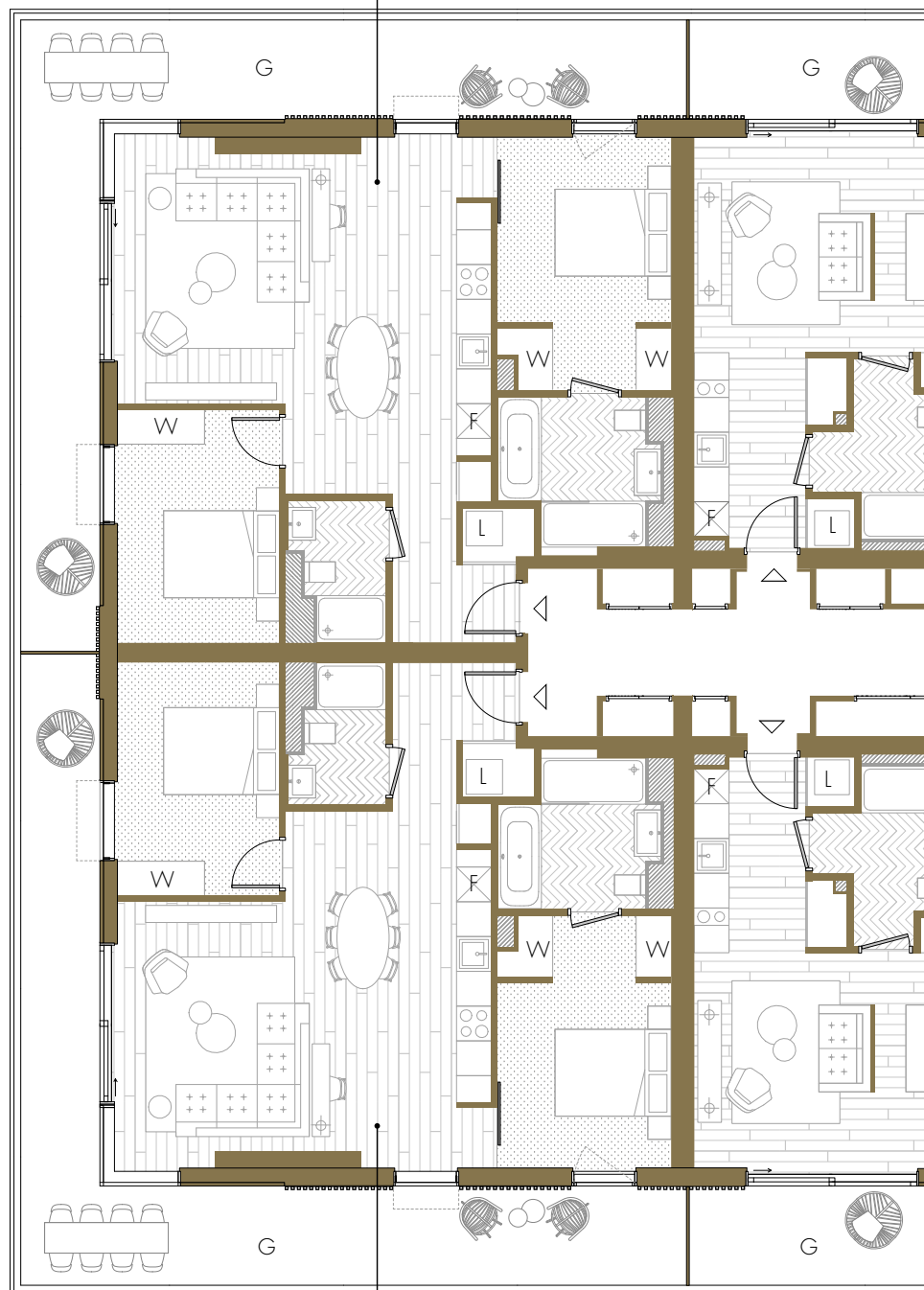
## LOCATION



## DISCLAIMER

This brochure and the information contained in it does not form part of any contract, and while reasonable effort has been made to ensure accuracy, this cannot be guaranteed and no representation or warranty is made in that regard. Apartment designs and layouts are indicative only and may change. Gardens do not include any planters or paviors as indicated on the floor plans. The specification of the apartments is the anticipated specification as at the date this brochure was prepared, but may be subject to change in accordance with permitted variances under the apartment sale contracts. Computer generated images and photos are indicative only. All sales remain subject to contract. All information regarding prospective commercial or retail tenants represents current intention only, and the final identity of the tenants may change. Fixtures and furnishings including wall panelling and wall dressings shown in Computer Generated Images and photos are not standard or included in sales. Please consult your sales contract for information. Warden London and Warden are marketing names only and will not necessarily form part of the approved postal address. Neither the agents nor any person in their employ has any authority to make or give any representation, warranty or guarantee (whether written or oral) in respect of or in relation to the development (or any parts thereof). Living Room dimensions are measured from the internal lining of the solid façade panels (not to glazing line), up to the kitchen worktop or opposite partition wall (whichever applies). They are also taken to party walls. Bedroom dimensions are measured between internal lining of the solid façade panels and to the party or partition wall (whichever applies). Where applicable, dimensions are taken to the wardrobe fronts, or an opposite partition wall. In bedrooms with walk-in wardrobes, the length of the room is measured to include the depth of the corridor up to the bathroom entrance door.

W4007 Two Bedroom  
W4107 Internal Area  
78.5 sq m / 845 sq ft  
W4207 Living Area  
5850 x 4600 mm  
W4307 Bedroom 1  
3005 x 4365 mm  
W4407 Bedroom 2  
2800 x 3425 mm  
Garden  
32.1 sq m / 346 sq ft



## Two Bedroom

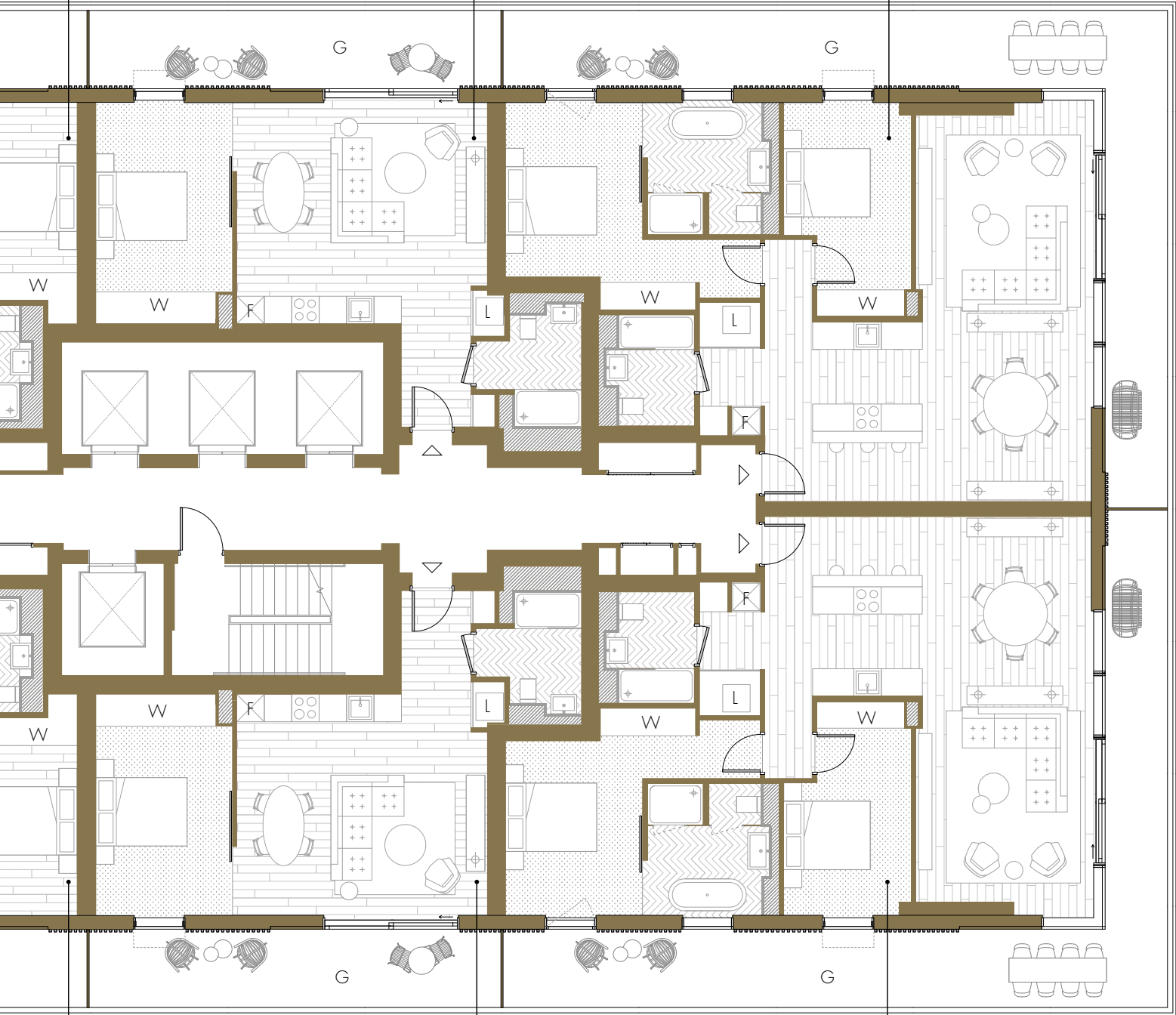
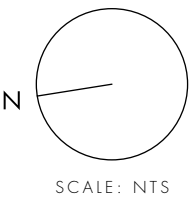
Internal Area  
78.5 sq m / 845 sq ft  
Living Area  
5850 x 4600 mm  
Bedroom 1  
3005 x 4365 mm  
Bedroom 2  
2800 x 3425 mm  
Garden  
32.1 sq m / 346 sq ft

W4006  
W4106  
W4206  
W4306  
W4406

W4008 Suite  
W4108 Internal Area  
38.4 sq m / 413 sq ft  
W4208 Living Area  
W4308 5650 x 3720 mm  
W4408 Garden  
10.1 sq m / 109 sq ft

W4001 One Bedroom  
W4101 Internal Area  
51.8 sq m / 558 sq ft  
W4201 Living Area  
W4301 5480 x 4110 mm  
W4401 Bedroom 1  
3000 x 4145 mm  
Garden  
15.2 sq m / 164 sq ft

W4002 Two Bedroom  
W4102 Internal Area  
94.9 sq m / 1022 sq ft  
W4202 Living Area  
W4302 3700 x 8700 mm  
W4402 Bedroom 1  
3000 x 3820 mm  
Bedroom 2  
2800 x 4100 mm  
Garden  
37.2 sq m / 401 sq ft



Marsh Wall ▶

W4005 Suite  
W4105 Internal Area  
38.4 sq m / 413 sq ft  
W4205 Living Area  
W4305 5650 x 3720 mm  
W4405 Garden  
10.1 sq m / 109 sq ft

W4004 One Bedroom  
W4104 Internal Area  
51.8 sq m / 558 sq ft  
W4204 Living Area  
W4304 5480 x 4110 mm  
W4404 Bedroom 1  
3000 x 4145 mm  
Garden  
15.2 sq m / 164 sq ft

W4003 Two Bedroom  
W4103 Internal Area  
94.9 sq m / 1022 sq ft  
W4203 Living Area  
W4303 3700 x 8700 mm  
W4403 Bedroom 1  
3000 x 3820 mm  
Bedroom 2  
2800 x 4100 mm  
Garden  
37.2 sq m / 401 sq ft

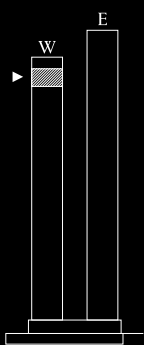
WEST TOWER  
LEVEL

# 45-47

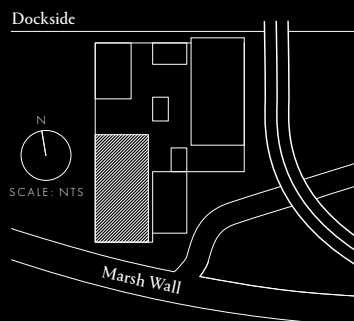
## LEGEND

W Wardrobe  
F Fridge  
L Laundry  
G Balcony Garden

## POSITION



## LOCATION

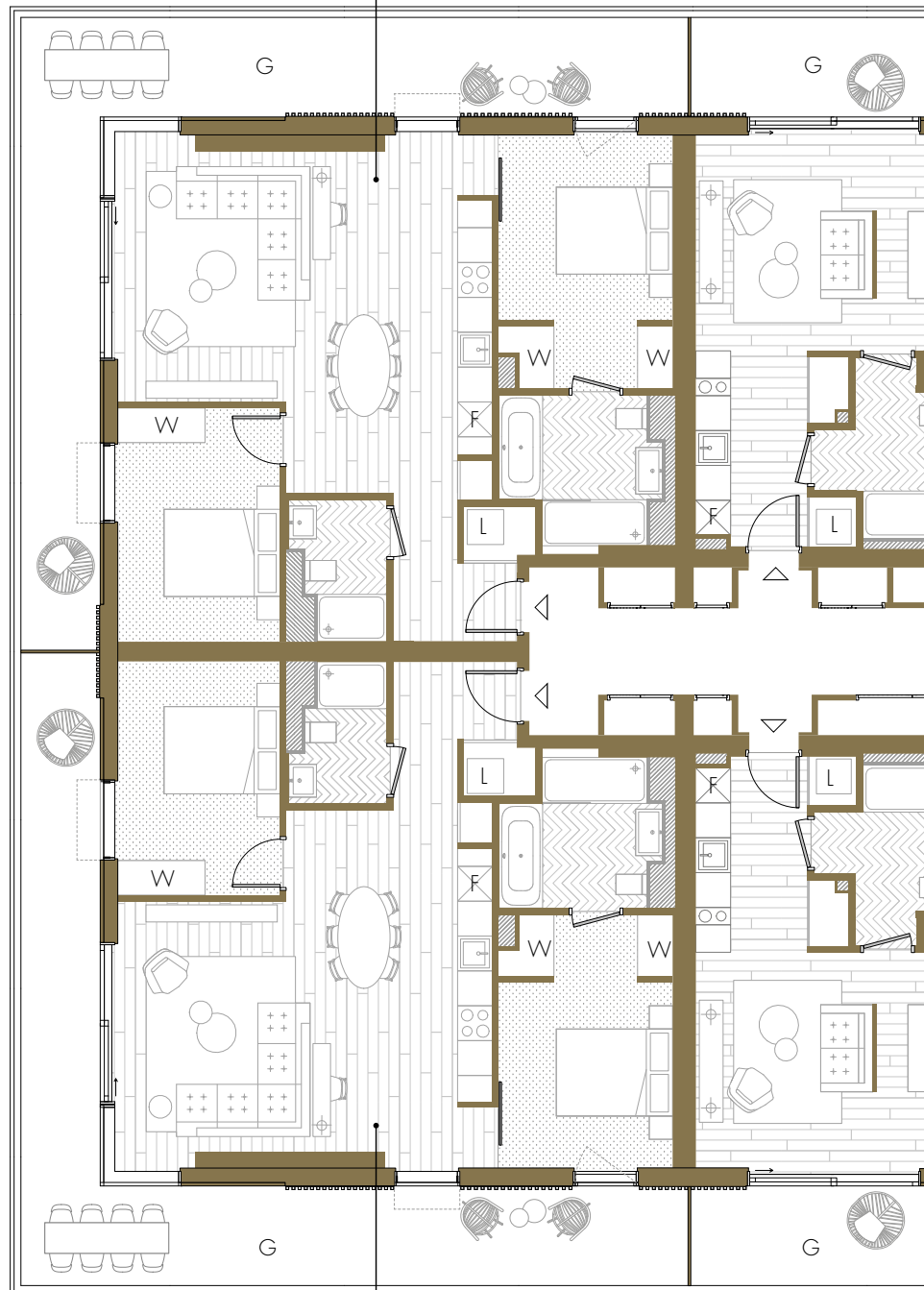


## DISCLAIMER

This brochure and the information contained in it does not form part of any contract, and while reasonable effort has been made to ensure accuracy, this cannot be guaranteed and no representation or warranty is made in that regard. Apartment designs and layouts are indicative only and may change. Gardens do not include any planters or paviors as indicated on the floor plans. The specification of the apartments is the anticipated specification as at the date this brochure was prepared, but may be subject to change in accordance with permitted variances under the apartment sale contracts. Computer generated images and photos are indicative only. All sales remain subject to contract. All information regarding prospective commercial or retail tenants represents current intention only, and the final identity of the tenants may change. Fixtures and furnishings including wall panelling and wall dressings shown in Computer Generated Images and photos are not standard or included in sales. Please consult your sales contract for information. Warden London and Warden are marketing names only and will not necessarily form part of the approved postal address. Neither the agents nor any person in their employ has any authority to make or give any representation, warranty or guarantee (whether written or oral) in respect of or in relation to the development (or any parts thereof). Living Room dimensions are measured from the internal lining of the solid façade panels (not to glazing line), up to the kitchen worktop or opposite partition wall (whichever applies). They are also taken to party walls. Bedroom dimensions are measured between internal lining of the solid façade panels and to the party or partition wall (whichever applies). Where applicable, dimensions are taken to the wardrobe fronts, or an opposite partition wall. In bedrooms with walk-in wardrobes, the length of the room is measured to include the depth of the corridor up to the bathroom entrance door.

W4507 Two Bedroom  
W4607 Internal Area  
78.4 sq m / 844 sq ft  
W4707 Living Area  
5850 x 4600 mm  
Bedroom 1  
3005 x 4365 mm  
Bedroom 2  
2800 x 3425 mm  
Garden  
32.1 sq m / 346 sq ft

◀ Dockside



## Two Bedroom

Internal Area  
78.4 sq m / 844 sq ft  
Living Area  
5850 x 4600 mm  
Bedroom 1  
3005 x 4365 mm  
Bedroom 2  
2800 x 3425 mm  
Garden  
32.1 sq m / 346 sq ft

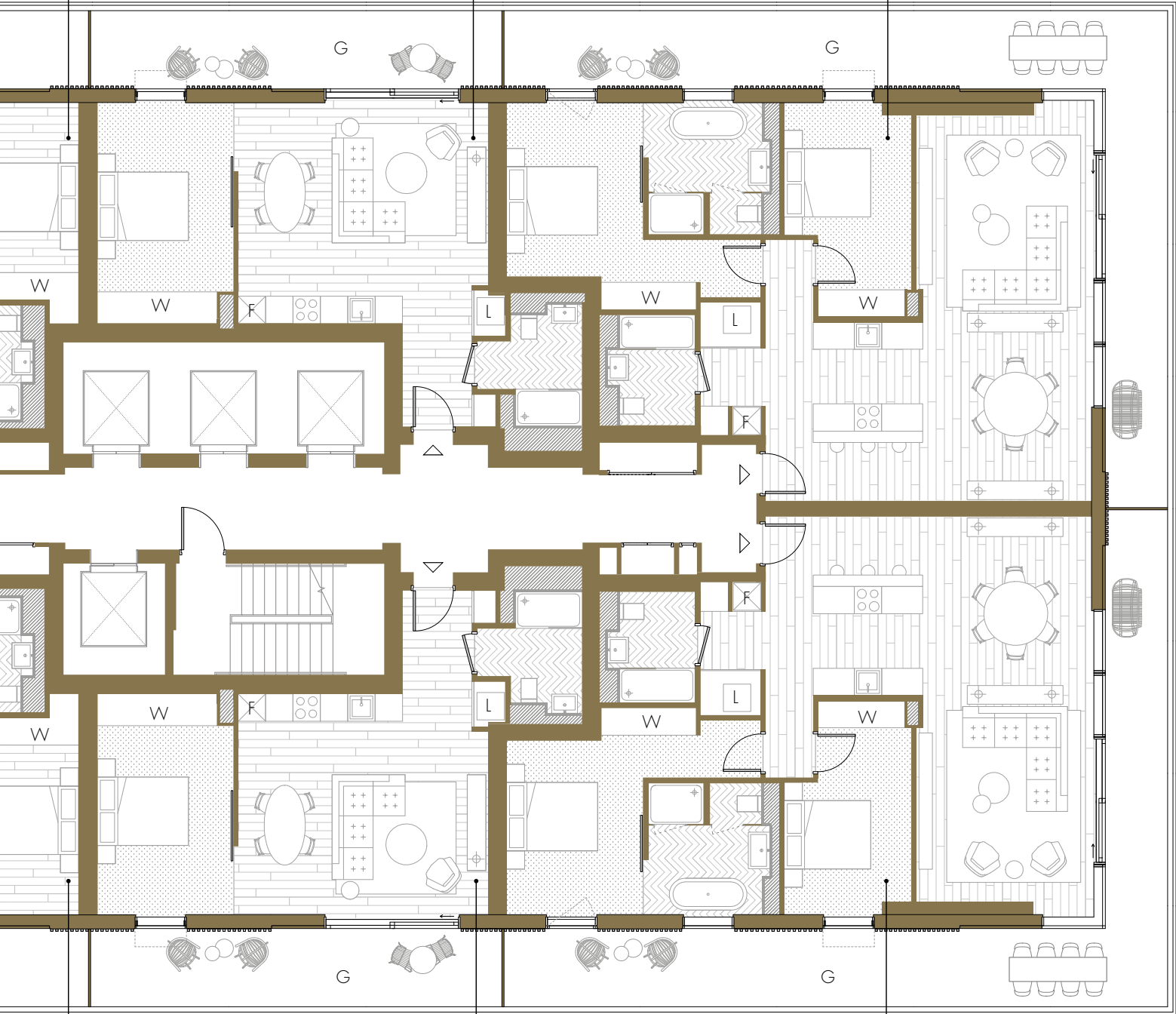
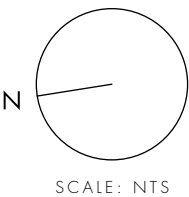
W4506  
W4606  
W4706



W4508 Suite  
W4608 Internal Area  
38.4 sq m / 413 sq ft  
W4708 Living Area  
5650 x 3720 mm  
Garden  
10.1 sq m / 109 sq ft

W4501 One Bedroom  
W4601 Internal Area  
51.8 sq m / 558 sq ft  
W4701 Living Area  
5480 x 4110 mm  
Bedroom 1  
3000 x 4145 mm  
Garden  
15.2 sq m / 164 sq ft

W4502 Two Bedroom  
W4602 Internal Area  
94.7 sq m / 1019 sq ft  
W4702 Living Area  
3700 x 8700 mm  
Bedroom 1  
3000 x 3820 mm  
Bedroom 2  
2800 x 4100 mm  
Garden  
37.2 sq m / 401 sq ft



Marsh Wall ▶

W4505 Suite  
W4605 Internal Area  
38.4 sq m / 413 sq ft  
W4705 Living Area  
5650 x 3720 mm  
Garden  
10.1 sq m / 109 sq ft

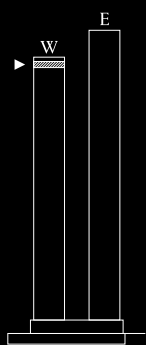
W4504 One Bedroom  
W4604 Internal Area  
51.8 sq m / 558 sq ft  
W4704 Living Area  
5480 x 4110 mm  
Bedroom 1  
3000 x 4145 mm  
Garden  
15.2 sq m / 164 sq ft

W4503 Two Bedroom  
W4603 Internal Area  
94.7 sq m / 1019 sq ft  
W4703 Living Area  
3700 x 8700 mm  
Bedroom 1  
3000 x 3820 mm  
Bedroom 2  
2800 x 4100 mm  
Garden  
37.2 sq m / 401 sq ft

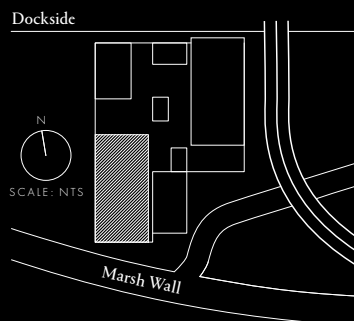
## LEGEND

- W Wardrobe  
F Fridge  
L Laundry  
G Balcony Garden

## POSITION



## LOCATION



## DISCLAIMER

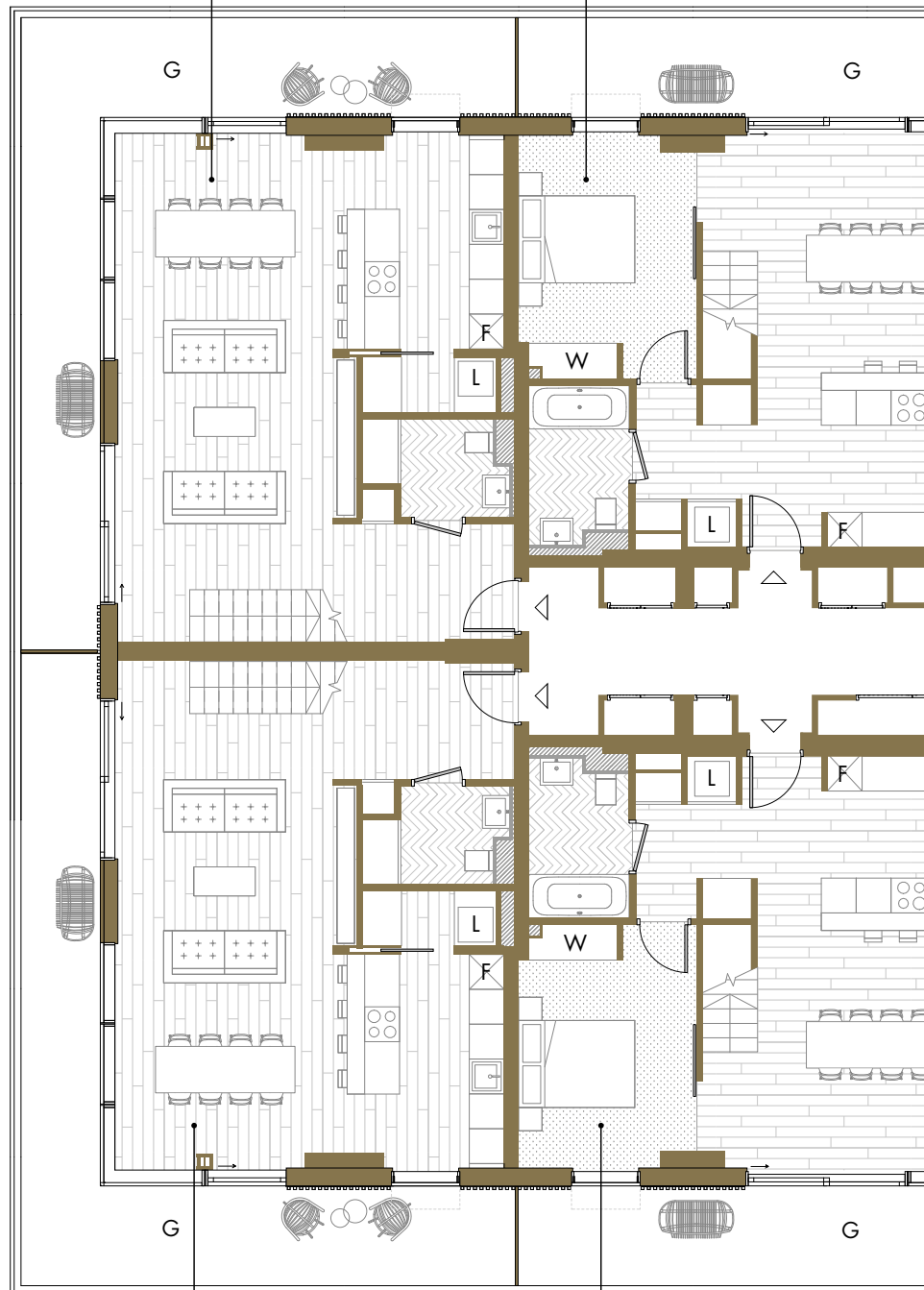
This brochure and the information contained in it does not form part of any contract, and while reasonable effort has been made to ensure accuracy, this cannot be guaranteed and no representation or warranty is made in that regard. Apartment designs and layouts are indicative only and may change. Gardens do not include any planters or paviers as indicated on the floor plans. The specification of the apartments is the anticipated specification as at the date this brochure was prepared, but may be subject to change in accordance with permitted variances under the apartment sale contracts. Computer generated images and photos are indicative only. All sales remain subject to contract. All information regarding prospective commercial or retail tenants represents current intention only, and the final identity of the tenants may change. Fixtures and furnishings including wall panelling and wall dressings shown in Computer Generated Images and photos are not standard or included in sales. Please consult your sales contract for information. Warden London and Warden are marketing names only and will not necessarily form part of the approved postal address. Neither the agents nor any person in their employ has any authority to make or give any representation, warranty or guarantee (whether written or oral) in respect of or in relation to the development (or any parts thereof). Living Room dimensions are measured from the internal lining of the solid façade panels (not to glazing line), up to the kitchen worktop or opposite partition wall (whichever applies). They are also taken to party walls. Bedroom dimensions are measured between internal lining of the solid façade panels and to the party or partition wall (whichever applies). Where applicable, dimensions are taken to the wardrobe fronts, or an opposite partition wall. In bedrooms with walk-in wardrobes, the length of the room is measured to include the depth of the corridor up to the bathroom entrance door.

## The Penthouse Apartments Lower Level

**W4807 Two Bedroom Duplex Penthouse**  
Internal Area  
117.4 sq m / 1264 sq ft  
Living Area  
3695 x 8700 mm  
Garden  
27.0 sq m / 291 sq ft

**W4808 Three Bedroom Duplex Penthouse**  
Internal Area  
148.9 sq m / 1603 sq ft  
Living Area  
8710 x 4100 mm  
Bedroom 1  
3070 x 3585 mm  
Garden  
20.3 sq m / 219 sq ft

◀ Dockside



### Two Bedroom Duplex Penthouse

Internal Area  
117.4 sq m / 1264 sq ft  
Living Area  
3695 x 8700 mm  
Garden  
27.0 sq m / 291 sq ft

W4806

### Three Bedroom Duplex Penthouse

Internal Area  
148.9 sq m / 1603 sq ft  
Living Area  
8710 x 4100 mm  
Bedroom 1  
3070 x 3585  
Garden  
20.3 sq m / 219 sq ft

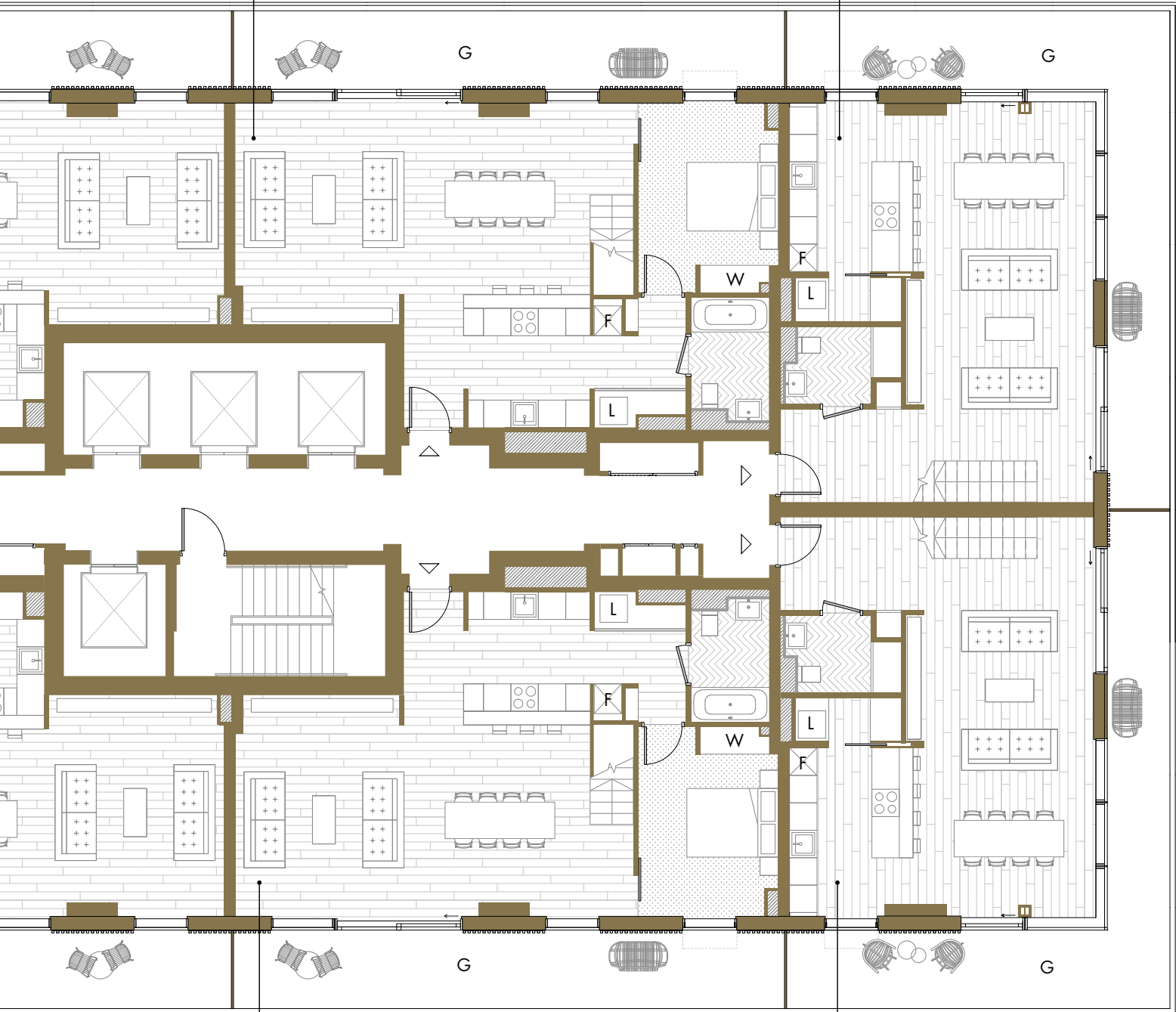
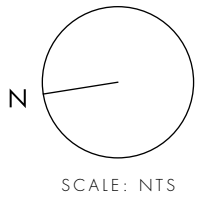
W4805

**W4801 Three Bedroom Duplex Penthouse**

Internal Area  
150.8 sq m / 1623 sq ft  
Living Area  
8710 x 4190 mm  
Bedroom 1  
3070 x 3550 mm  
Garden  
20.3 sq m / 219 sq ft

**W4802 Two Bedroom Duplex Penthouse**

Internal Area  
117.8 sq m / 1268 sq ft  
Living Area  
3695 x 8700 mm  
Garden  
27.0 sq m / 291 sq ft



Marsh Wall ►

**Three Bedroom Duplex Penthouse**

Internal Area  
150.8 sq m / 1623 sq ft  
Living Area  
8710 x 4190 mm  
Bedroom 1  
3070 x 3550 mm  
Garden  
20.3 sq m / 219 sq ft

**W4804**

**Two Bedroom Duplex Penthouse**

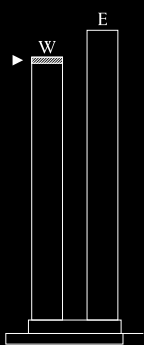
Internal Area  
117.8 sq m / 1268 sq ft  
Living Area  
3695 x 8700 mm  
Garden  
27.0 sq m / 291 sq ft

**W4803**

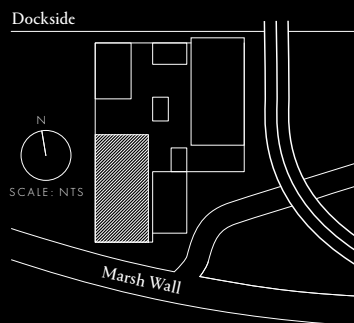
## LEGEND

W Wardrobe  
F Fridge  
L Laundry  
G Balcony Garden

## POSITION



## LOCATION



## DISCLAIMER

This brochure and the information contained in it does not form part of any contract, and while reasonable effort has been made to ensure accuracy, this cannot be guaranteed and no representation or warranty is made in that regard. Apartment designs and layouts are indicative only and may change. Gardens do not include any planters or paviers as indicated on the floor plans. The specification of the apartments is the anticipated specification as at the date this brochure was prepared, but may be subject to change in accordance with permitted variances under the apartment sale contracts. Computer generated images and photos are indicative only. All sales remain subject to contract. All information regarding prospective commercial or retail tenants represents current intention only, and the final identity of the tenants may change. Fixtures and furnishings including wall panelling and wall dressings shown in Computer Generated Images and photos are not standard or included in sales. Please consult your sales contract for information. Warden London and Warden are marketing names only and will not necessarily form part of the approved postal address. Neither the agents nor any person in their employ has any authority to make or give any representation, warranty or guarantee (whether written or oral) in respect of or in relation to the development (or any parts thereof). Living Room dimensions are measured from the internal lining of the solid façade panels (not to glazing line), up to the kitchen worktop or opposite partition wall (whichever applies). They are also taken to party walls. Bedroom dimensions are measured between internal lining of the solid façade panels and to the party or partition wall (whichever applies). Where applicable, dimensions are taken to the wardrobe fronts, or an opposite partition wall. In bedrooms with walk-in wardrobes, the length of the room is measured to include the depth of the corridor up to the bathroom entrance door.

## The Penthouse Apartments Upper Level

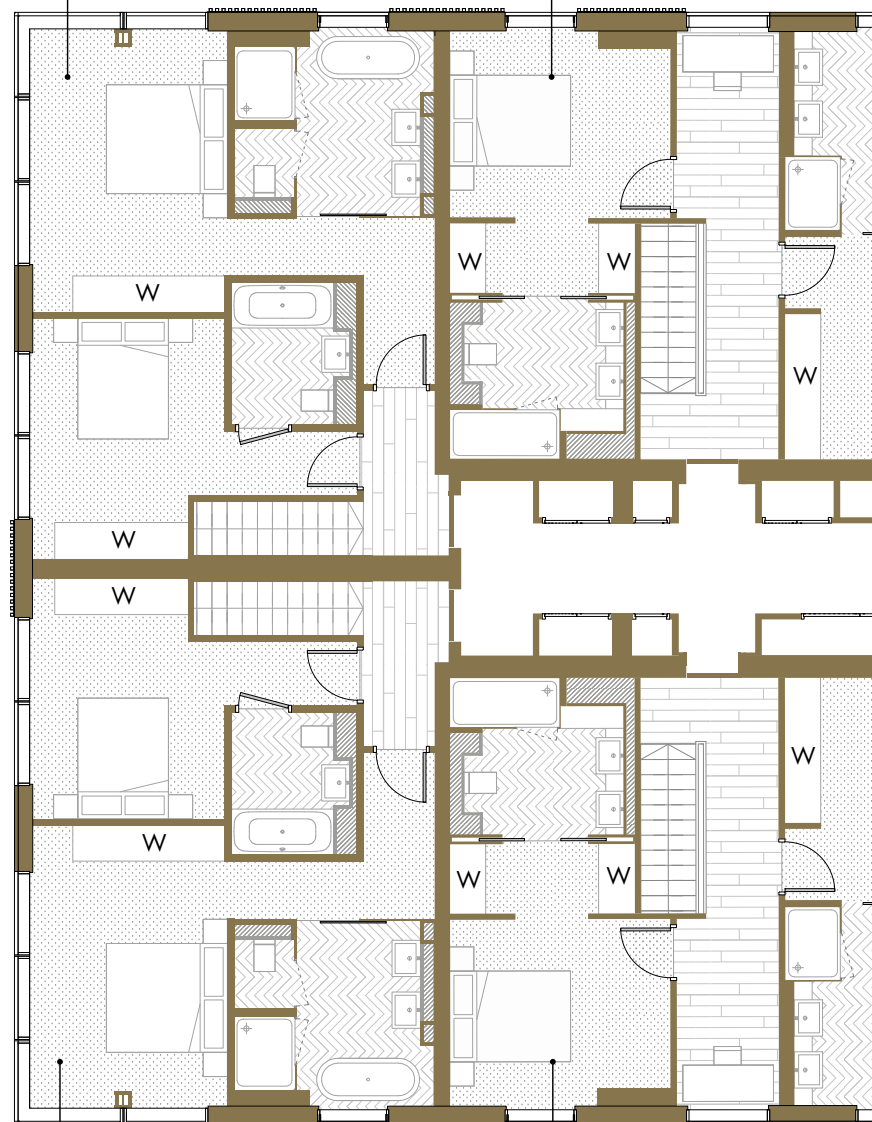
### W4807 Two Bedroom Duplex Penthouse

Internal Area  
117.4 sq m / 1264 sq ft  
Bedroom 1  
3220 x 4060 mm  
Bedroom 2  
3170 x 3380 mm

### W4808 Three Bedroom Duplex Penthouse

Internal Area  
148.9 sq m / 1603 sq ft  
Bedroom 2  
3330 x 4845 mm  
Bedroom 3  
3660 x 4395 mm

◀ Dockside



### Two Bedroom Duplex Penthouse

Internal Area  
117.4 sq m / 1264 sq ft  
Bedroom 1  
3220 x 4060 mm  
Bedroom 2  
3170 x 3380 mm

### Three Bedroom Duplex Penthouse

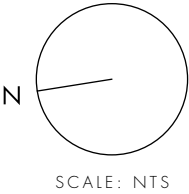
Internal Area  
148.9 sq m / 1603 sq ft  
Bedroom 2  
3330 x 4845 mm  
Bedroom 3  
3660 x 4395 mm

W4801 | Three Bedroom  
Duplex Penthouse

Internal Area  
150.8 sq m/1623 sq ft  
Bedroom 2  
3520 x 4845 mm  
Bedroom 3  
3455 x 4395 mm

W4802 | Two Bedroom  
Duplex Penthouse

Internal Area  
117.8 sq m/ 1268 sq ft  
Bedroom 1  
3220 x 4060 mm  
Bedroom 2  
3170 x 3380 mm



Marsh Wall ►

Three Bedroom  
Duplex Penthouse

Internal Area  
150.8 sq m/ 1623 sq ft  
Bedroom 2  
3520 x 4845 mm  
Bedroom 3  
3455 x 4395 mm

W4804

Two Bedroom  
Duplex Penthouse

Internal Area  
117.8 sq m/ 1268 sq ft  
Bedroom 1  
3220 x 4060 mm  
Bedroom 2  
3170 x 3380 mm

W4803



### Main Structure

Reinforced concrete frame on reinforced concrete piled foundations.

### Building Envelope

Aluminium cladding system including glazed spandrel panels, aluminium rainscreen elements and off-white sandblasted lightweight precast fins and fascia to the podium facades.

### Floors

Reinforced concrete slab with appropriate floor finishes (see flooring).

### Roof

High-performance membrane roofing overlaid with pre-cast paving, planters, washed gravel where applicable.

### Windows

Double-glazed aluminium windows including opening lights, where appropriate, double-glazed aluminium doors to balconies.

### Stairs

In-situ or pre-cast concrete stairs with steel balustrades in common areas.

### Walls

Party walls constructed from metal studwork finished on both sides with sound resistant plasterboard and acoustic insulation between, or structural concrete faced with plasterboard on both sides. Internal walls constructed from metal studwork with plasterboard on each side and acoustic insulation.

### Balcony Gardens

Frameless clear glazed balustrades with artificial grass to the entirety of the balcony.

### Ceilings

Suspended plasterboard painted with white washable emulsion

### Flooring

Smoked oak timber floor to hall, living areas and kitchen. Marble black and white bespoke chevron tile flooring to bathrooms, en-suites and shower rooms. Fitted broadloom carpet to bedrooms.

### Decoration

All internal walls painted with warm white washable emulsion. Skirtings and door frames painted to match walls.

### Kitchens: Apartments

Bespoke black, framed and reeded glass wall cabinet, with custom designed modular base units finished in painted lacquer with dark grey interior. White marble worktops and splashback with under-mounted stainless steel sink and stainless steel finish deck mounted lever tap. Concealed LED lighting to the glazed wall unit. Integrated appliances, include multi-function electric oven, concealed extractor\*, touch control induction hob, fridge freezer, dishwasher and a combined washing machine/tumble dryer located in utility cupboard. \*Kitchens with island units include a feature cylindrical extractor.

### Kitchens: Suites

Bespoke black, framed and reeded glass wall cabinet, with custom designed modular base units finished in painted lacquer with dark grey interior. White marble worktops and splashback with under-mounted stainless steel sink and stainless steel finish deck mounted lever tap. Concealed LED lighting to the glazed wall unit. Integrated appliances, include multi-function electric oven, concealed extractor, touch control induction hob, fridge freezer, dishwasher and a combined washing machine/tumble dryer located in utility cupboard.

### Wardrobes

Integrated wardrobes and storage cupboards with stained oak veneer timber finish, contrasting interior colour and bespoke metal door pulls.

### **Bathrooms**

Fitted with white bath with stainless steel finish thermostatic mixer tap. Feature head shower + separate detachable handset and framed reeded glass shower screen. White ceramic wall-mounted WC with concealed cistern. Custom made, wall-mounted, white composite basin with stainless steel wall-mounted feature tap. Bespoke wall-mounted framed backlit mirror and wall-mounted floating heated towel bars. White natural marble wall tiles and marble black and white bespoke chevron tile flooring.

### **Shower Rooms**

Fitted with white shower tray with feature shower and framed reeded glass shower screen. White ceramic wall-mounted WC with concealed cistern. Custom made, wall-mounted, white composite basin with stainless steel wall-mounted feature tap. Bespoke wall-mounted framed backlit mirror and wall-mounted floating heated towel bars. White natural marble wall tiles and marble black and white bespoke chevron tile flooring.

### **Master En-suite**

Selected master en-suites are fitted with white freestanding composite bath tub, thermostatic floor mounted mixer tap and detachable shower handset. Feature doors of metal frame and reeded glass screen separate WC and shower rooms. White porcelain wall-mounted WC with concealed cistern. Custom made, wall-mounted, white composite basin with stainless steel wall-mounted feature tap. Bespoke wall-mounted framed backlit mirror and wall-mounted floating heated towel bars. White natural marble wall tiles and marble black and white bespoke chevron tile flooring.

### **Heating, Cooling and Hot Water**

Heating and cooling provided by Fan Coil Units. Mechanical Ventilation and Heat Recovery (MVHR) provided by centralised units and associated ceiling ductwork. Individually metered system provides heating and hot water from Wardian London's central plant.

### **Electrics**

Energy efficient down lighters fitted in all rooms, where appropriate. Switch plates and sockets in accordance with IEE regulations. TV/FM points and telephone points for high speed broadband internet access in living room; communal satellite dish with connection points in living room and main bedroom. Smoke/heat detectors fitted as standard. (Residents are responsible for their own connections and related charges for cost of services).

### **Management and Security**

Management and 24 hour security services located in the central estate management office. Audio entry system connected to concierge. CCTV system provided to cover the whole estate.

### **Parking**

Limited basement parking available.

### **Elevators**

Elevators serve all residential floors. Separate elevators from ground to basement levels.

### **Podium Levels and Amenity Spaces**

Podium level areas laid out and finished with a combination of landscape architect designed hard and soft landscaping with feature lighting.

### **Additional Apartment Storage**

Additional secure storage space is available for rent in basement mezzanine level at an additional cost, where items such as golf clubs, skis etc. can be stored. Cycle storage provided at basement mezzanine level.

NOTES

.....









WARDIANLONDON.COM

ECOWORLD    ballymore.  
CREATING TOMORROW & BEYOND

---

A JOINT DEVELOPMENT