

A photograph of a modern lounge area with wicker furniture and arched windows, reflected in a swimming pool. The lounge area features several wicker sofas and armchairs with cushions, some of which have a red and white floral pattern. The walls are a warm, light brown color, and the ceiling is white with recessed lighting. Two large, arched windows with white frames are visible. The swimming pool in the foreground has a blue mosaic tile border and reflects the lounge area and the sky. The text "MOTE HOUSE" is overlaid in white capital letters across the middle of the image.

# MOTE HOUSE



## Own a home you'll be proud of

Our idea of retirement is different. At Audley you own your own home, which means you retain your asset and your highly valued independence.

We look after the exterior maintenance leaving you free to spend your time however you wish. You could visit the Audley Club, with amenities to rival any country house hotel. Should you require extra help in the future, Audley Care can provide as little or as much support as you need.

Owning a home at Mote House gives you a truly independent lifestyle in a beautiful and secure environment. We look forward to showing you around.

Audley Mote House



GOOD MOVE



## Mote House luxury retirement village

Situated in the 450-acre splendour of Mote Park and just minutes away from Maidstone town centre, lies Audley Mote House. At the heart of the village is a stunning Grade II\* listed Georgian mansion that has been beautifully restored and converted into exquisite apartments. It is also home to the Audley Club, which has its own luxury health club, swimming pool, library and The Romney Restaurant.





# TRANQUILITY



## Right on your doorstep

Audley Mote House is a luxury development of 100 cottages and apartments near the village of Bearsted.

Set within the grounds surrounding Mote House lies the rest of the village, including the Walled Garden; a unique location with an attractive selection of cottages, and Gatehouse Lodge; a stunning collection of lodge houses and luxury apartments.



## A unique way of life

Mote Park's name derives from 'moot' or 'mote' in Old English, meaning 'a place of assembly'. The park has an interesting royal background, belonging at one time to King Edward IV's consort, Elizabeth Woodville. Mote House itself dates back to the reign of King George III who is said to have gathered troops there as England prepared to face Napoleon.





Whether you want to be active, exercise and make the most of the local amenities, or simply take it easy, take stock and enjoy a little peace – it's entirely up to you.

### Country and coastline

Mote Park's glorious 30-acre lake is the perfect place to stretch your legs. Home to a variety of water fowl, its picturesque waters are also great for sailing and angling. Go a little further afield and explore Kent's gorgeous coastline – one of England's longest and most varied. Observe abundant and changing coastal wildlife throughout the year and explore an impressive number of Blue Flag beaches with their high water quality and reputation for safety, service and environmental management. As well as breathing in the sea air, you can also wander Kent's famous towns and villages, or enjoy bracing walks such as those around Harrietsham, giving you wonderful views from the heights of the North Downs.

### Historic Maidstone

Take a walk into the historic town of Maidstone and you will discover that it can be traced back through written history to the 10th century. Today, it's the county town of Kent. It has a rich heritage, yet is also a popular destination for entertainment, shopping and dining.

You will find Mote House perfectly situated to give you easy access to local towns and cities via convenient road and rail links. You can enjoy golf at the nearby course in Bearsted or visit Leeds Castle with its exciting history, beautiful gardens and all-year-round events. Plus, London is only an hour away by train, and from nearby Ashford International you can be in Lille via Eurostar in under 60 minutes.



SPACE



LUXURIOUS SURROUNDINGS





UNWIND



COMFORT



QUALITY





WELCOME  
TO THE

# AUDLEY CLUB





RELAX

## The Audley Club - luxury on your doorstep



When you move to one of our luxury villages, you automatically become a member of the Audley Club. It's on your doorstep, part of the village, and yours to use as you please. You can also use the facilities of the Audley Club at any of our other villages.

You will be looked after by our highly trained Audley Club team who have been chosen for their exceptional personal qualities. They provide nothing less than a 'concierge' level of service to ensure you get the most out of your Club membership - whether that's through delivering delicious room service meals, help booking a holiday or whipping up the frothiest cappuccino.

## The Audley Club luxury facilities

There's so much to enjoy at Mote House:

### Swimming pool and relaxation area

Take a dip without worrying about the weather.

### Exercise in the fitness studio

Our qualified staff can advise on the right programme or exercise class for you.

### Time to yourself in the library and lounge

When you want some real peace and quiet, you will find it in the library amongst our huge range of books or sit and relax in our lounge.

Also yours to enjoy at an additional cost:

### Spa therapies in our treatment rooms

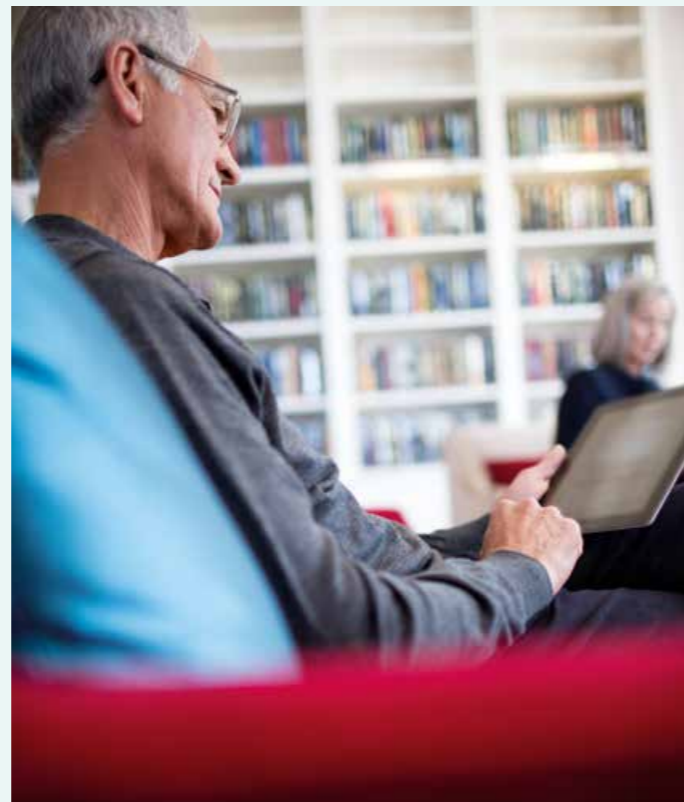
Professional beauticians and therapists are available to offer manicures, pedicures, massages and facials to help you feel pampered and relaxed.

### Hair salon

Your hair appointment will be just a few short steps from your front door with one of the area's top hairdressers.

### Exquisite dining in The Romney Restaurant, bar and bistro

Not only do our chefs use local ingredients to create great menus, but while you dine you can also enjoy stunning views.





A U D L E Y

C A R E

As time moves on and some tasks become less easy, there is no reason why you shouldn't continue to live the life you know, in the home you have made. All you need is a visit from a trusted, friendly face; someone to listen or lend a helping hand when you would appreciate it.



### Care of the highest level

As one of the UK's most respected care providers and a leader in its field, Audley is recognised, registered and regularly audited by the Care Quality Commission (CQC). Which means the carer you invite into your home is rigorously trained and highly qualified, and our standard of care is second to none.

### Safe and secure

Not only do we take care of all the exterior maintenance of your home but we also have CCTV that covers the village. We have staff on call every minute of every day, so if you need anything you can just pick up the phone. This means you can go on holiday or visit relatives for as long as you please, knowing your home is looked after. Within each property there is an intruder, smoke and heat alarm connected to the central monitor alarm. There is also an emergency call system.

And don't forget that your neighbours are looking for the same stress-free life as you, so they fully understand and respect your wishes, as you do theirs.

### How can we help?

Everyone has their own tastes and needs, so our care is made to measure and you only pay for the services you use. Our discreet and friendly staff will help you with as little or as much as you want, including:

A hand with domestic tasks like cooking, cleaning and ironing.

Assistance with getting up and going to bed, whatever the time.

Someone to go shopping with you or for you, or to collect prescriptions.

Help with personal care or eating. Someone to walk the dog or feed the cat.

A little help and company if you are recovering from illness.

Live-in, sleep-in or night care, or simply holiday cover.

Long-term, short-term or emergency care.

Someone to accompany you to appointments or social activities.

IT'S ALL

IN THE

DETAIL



### Beautifully crafted

You will find every one of our luxury properties beautifully laid out and built to a high specification with quality workmanship. They have all been sensibly designed with your future needs in mind and have flexibility built-in. Every layout has been thoroughly thought through right down to the last detail and each one has all the space you need to live comfortably. And should you want to add a few personal touches, upgrades may be available. Speak to our Sales Team to find out more.



We have been building and managing luxury villages for over 15 years but our experience in providing high-quality accommodation and care for older people goes back much further.

BUILDING

BETTER

FUTURES

In 1983, our Chief Executive Nick Sanderson founded a company called Beaumont - which, over time, developed the conventional care home concept into something completely different, the UK's very first luxury retirement villages. Thirty years on, we have grown to be a successful company. Our solid foundations and innovative thinking have attracted major financial backing from companies, including Private Patients Plan, 3i and, most recently, Moorfield Group.



### Growing communities

Willicombe Park in Royal Tunbridge Wells and Hollins Hall in Harrogate, our first retirement villages, opened back in 2000. We are proud to say they are now thriving communities. And thanks to our financial backing, we are also pushing ahead with our plans to build further luxury villages across the UK.



**01622 737 279**

**[motesales@audleyretirement.co.uk](mailto:motesales@audleyretirement.co.uk)**

Audley Mote House, Mote Park  
Nr Bearsted, Kent ME15 8NQ

Audley villages:

**Binswood**, Royal Leamington Spa, Warwickshire. **Chalfont Dene**, Chalfont St Peter, Buckinghamshire. **Clevedon**, Ilkley, Yorkshire. **Flete House**, Ivybridge, Devon. **Hollins Hall**, Harrogate, Yorkshire. **Inglewood**, Kintbury, Berkshire. **St Elphin's Park**, Darley Dale, Derbyshire. **St George's Place**, Edgbaston, Birmingham. **Willicombe Park**, Royal Tunbridge Wells, Kent.

Opening soon:

**Ellerslie**, Malvern, Worcestershire.  
**Redwood**, Failand, Bristol.

[www.audleyretirement.co.uk](http://www.audleyretirement.co.uk)

Images from a variety of Audley villages.  
All images for illustration purposes only.



GOOD MOVE

610152

