



PLOT LOCATORS FOR THE HENLEY

PLEASE SEE OVERLEAF

A HOME WHERE TIME BEGINS...




THE ALEXANDER
A HOME WHERE TIME BEGINS...

FLOOR PLANS

The Alexander



First Floor

TYPE T1 3 BEDROOM APARTMENT (1152ft²)

Plot 76

KITCHEN/LIVING/DINING
8620mm (max) x 6305mm (max)
(28'3" x 20'8")

MASTER BEDROOM
4259mm (max) x 3435mm (max)
(14' x 11'3")

BEDROOM 2
5252mm x 2597mm
(17'3" x 8'6")

BEDROOM 3
3037mm x 2375mm
(10' x 7'10")



Ground Floor

FLOOR PLANS

The Alexander



First Floor

TYPE T2 2 BEDROOM APARTMENT (904ft²)

Plot 77

KITCHEN/LIVING/DINING
6638mm (max) x 6306mm (max)
(21'8" x 20'8")

MASTER BEDROOM
4259mm (max) x 2689mm
(14' x 8'10")

BEDROOM 2
3261mm x 3037mm
(10'8" x 10')



Ground Floor

Floor plans, dimensions and configurations are included for guidance only, may be subject to revision during construction, please refer to current drawings with a Sales Consultant. Dimensions listed are not inclusive of balcony and terrace areas.

FLOOR PLANS

The Alexander

FLOOR PLANS

The Alexander



First Floor

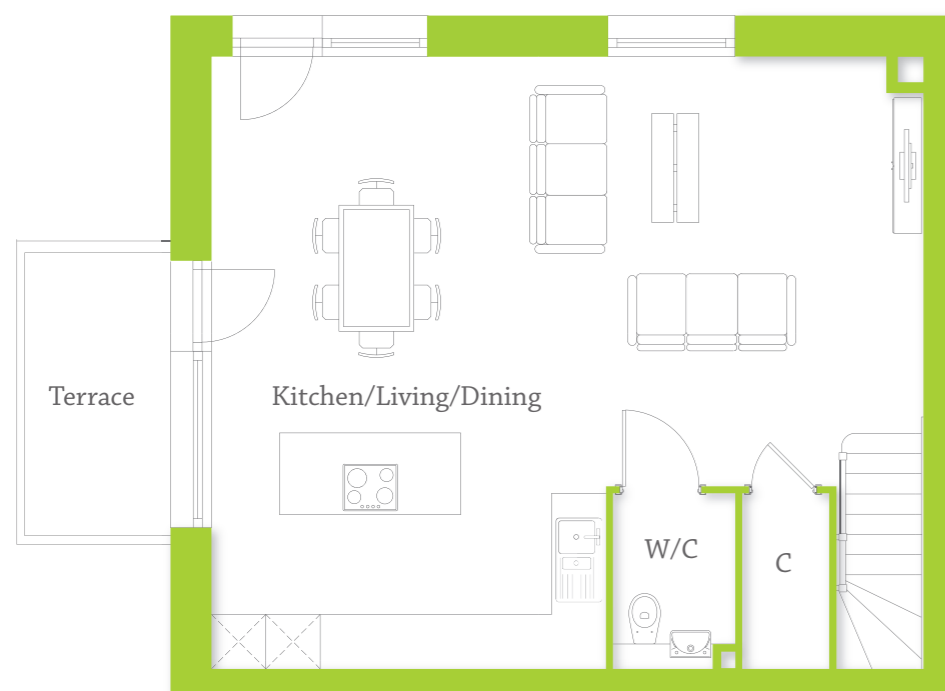
TYPE T3
3 BEDROOM APARTMENT (1141ft²)
 Plot 78

KITCHEN/LIVING/DINING
 7858mm (max) x 6770mm (max)
 (25'9" x 22'3")

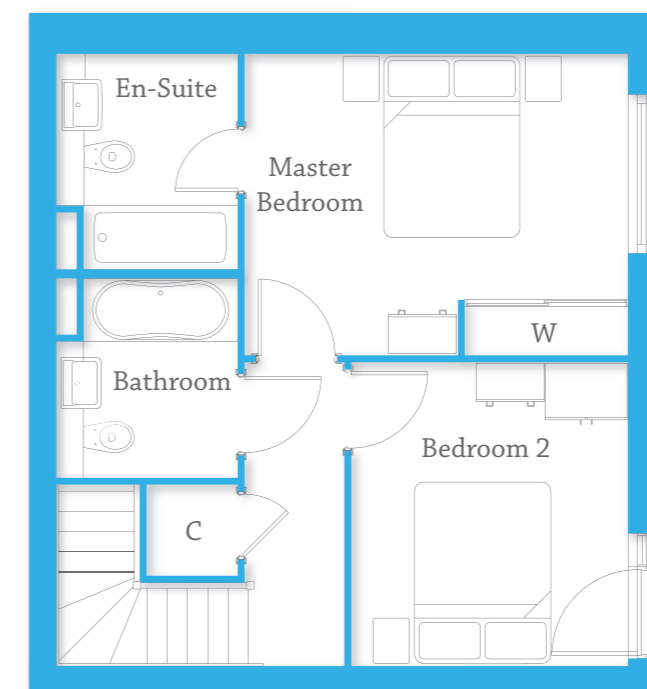
MASTER BEDROOM
 3537mm (max) x 3064mm
 (11'7" x 10'1")

BEDROOM 2
 3416mm x 3158mm
 (11'2" x 10'4")

BEDROOM 3
 3538mm x 2671mm
 (11'7" x 8'9")



Ground Floor



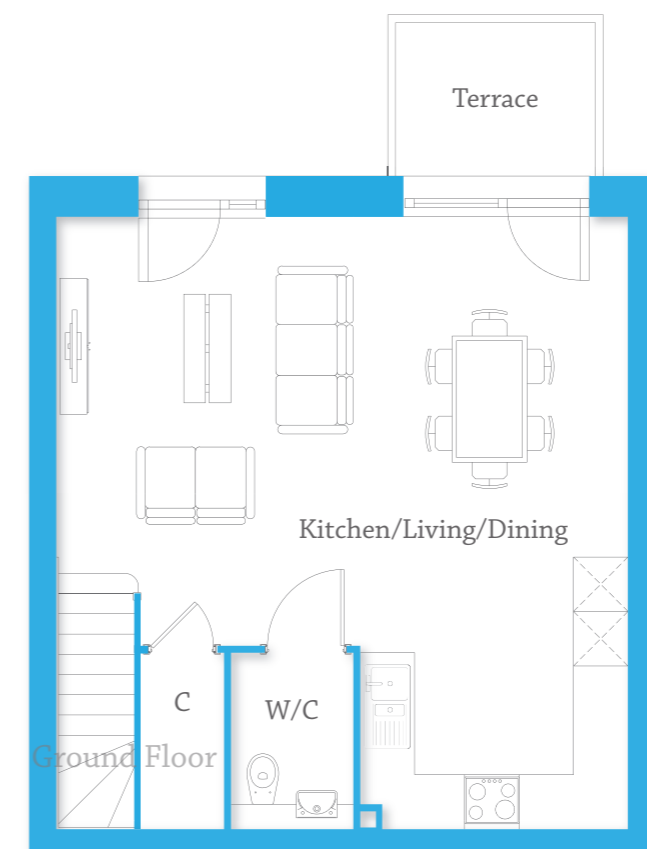
First Floor

TYPE T4
2 BEDROOM APARTMENT (921ft²)
 Plot 79

KITCHEN/LIVING/DINING
 6800mm (max) x 6305mm (max)
 (22'4" x 20'8")

MASTER BEDROOM
 4257mm (max) x 3425mm (max)
 (14' x 11'3")

BEDROOM 2
 3270mm x 3073mm
 (10'9" x 10'1")



Ground Floor

Floor plans, dimensions and configurations are included for guidance only, may be subject to revision during construction, please refer to current drawings with a Sales Consultant. Dimensions listed are not inclusive of balcony and terrace areas.



Combining modern aesthetics and cutting-edge technology, each apartment pushes the boundaries of residential design.

FLOOR PLANS

The Alexander



TYPE T5

1 BEDROOM APARTMENT (572ft²)

Plots 80, 84(h), 91, 96(h), 103 & 108(h)

KITCHEN/LIVING/DINING

6770mm (max) x 4126mm (max) (22'3" x 13'6")

BEDROOM

3925mm (max) x 3550mm (max) (12'11" x 11'8")

Note - Window and balcony positions vary plot to plot. Plot 80 does not have a balcony, please refer to current drawings with a Sales Consultant.

FLOOR PLANS

The Alexander



TYPE T6

2 BEDROOM APARTMENT (753ft²)

Plots 81, 85(h), 86, 92(h), 93, 97(h), 98, 104(h), 105, 109(h) & 110

KITCHEN/LIVING/DINING

6305mm (max) x 4675mm (max) (20'8" x 15'4")

MASTER BEDROOM

4257mm (max) x 3432mm (max) (14' x 11'3")

BEDROOM 2

3275mm x 3100mm (10'9" x 10'2")

Note - Window and balcony positions vary plot to plot. Plot 81 has a terrace.

FLOOR PLANS

The Alexander



TYPE T7

2 BEDROOM APARTMENT (684ft²)

Plot 82

KITCHEN/LIVING/DINING

6770mm (max) x 5093mm (max) (22'3" x 16'9")

MASTER BEDROOM

3763mm (max) x 3167mm (12'4" x 10'5")

BEDROOM 2

3763mm (max) x 2325mm (max) (12'4" x 7'8")

FLOOR PLANS

The Alexander



TYPE T8

3 BEDROOM APARTMENT (1163ft²)

Plots 87, 94, 99, 106 & 111

KITCHEN/LIVING/DINING

6770mm (max) x 6625mm (max) (22'3" x 21'9")

MASTER BEDROOM

3770mm x 3257mm (max) (12'4" x 10'8")

BEDROOM 2

4700mm x 3200mm (max) (15'5" x 10'8")

BEDROOM 3

3500mm x 2700mm (11'6" x 8'10")

Note - Window and balcony positions vary plot to plot, please refer to current drawings with a Sales Consultant.

Floor plans, dimensions and configurations are included for guidance only, may be subject to revision during construction, please refer to current drawings with a Sales Consultant. Dimensions listed are not inclusive of balcony and terrace areas.

FLOOR PLANS

The Alexander



TYPE T9

1 BEDROOM APARTMENT (575ft²)

Plots 88, 89(h), 100, 101(h) & 112

KITCHEN/LIVING/DINING

6305mm (max) x 4569mm (max) (20'8" x 15')

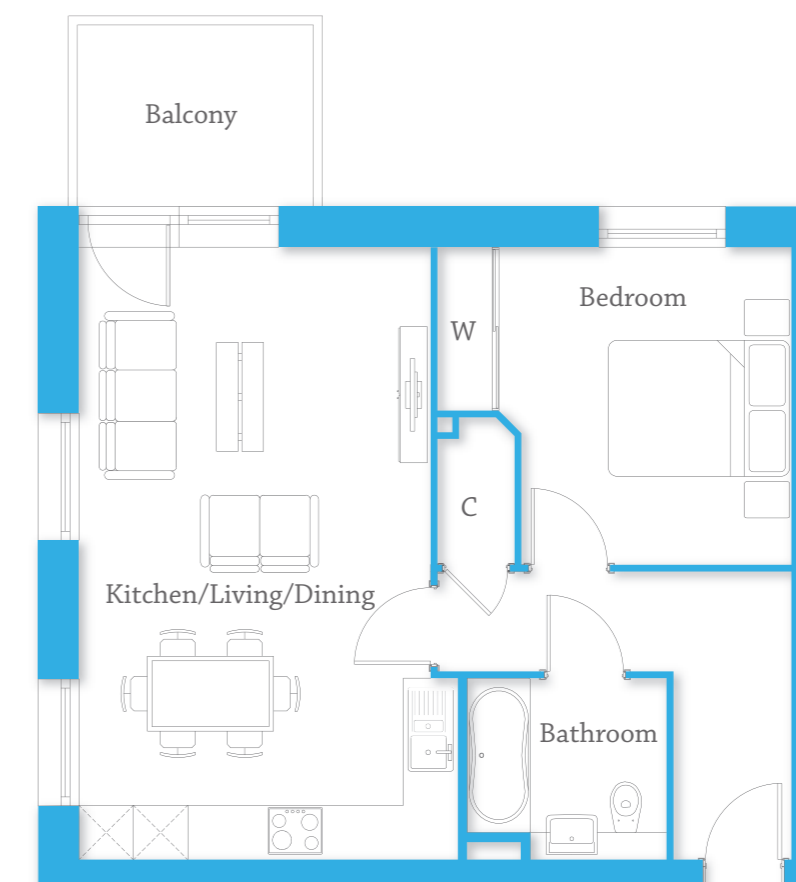
BEDROOM

3844mm (max) x 3085mm (max) (12'7" x 10'1")

Note - Window and balcony positions vary plot to plot, please refer to current drawings with a Sales Consultant.

FLOOR PLANS

The Alexander



TYPE T10

1 BEDROOM APARTMENT (570ft²)

Plots 83, 90, 95, 102 & 107

KITCHEN/LIVING/DINING

6770mm (max) x 4175mm (max) (22'3" x 13'8")

BEDROOM

3525mm (max) x 2996mm (11'7" x 9'10")

Note - Window and balcony positions vary plot to plot, please refer to current drawings with a Sales Consultant.

FLOOR PLANS

The Alexander



TYPE T11A

2 BEDROOM APARTMENT (819ft²)

Plots 113(h), 114, 115(h) & 116

KITCHEN/LIVING/DINING

6518mm (max) x 4469mm (max) (21'5" x 14'8")

MASTER BEDROOM

5645mm (max) x 2764mm (max) (18'6" x 9'1")

BEDROOM 2

4530mm (max) x 2765mm (max) (14'10" x 9'1")

Note - Window positions vary plot to plot, please refer to current drawings with a Sales Consultant.

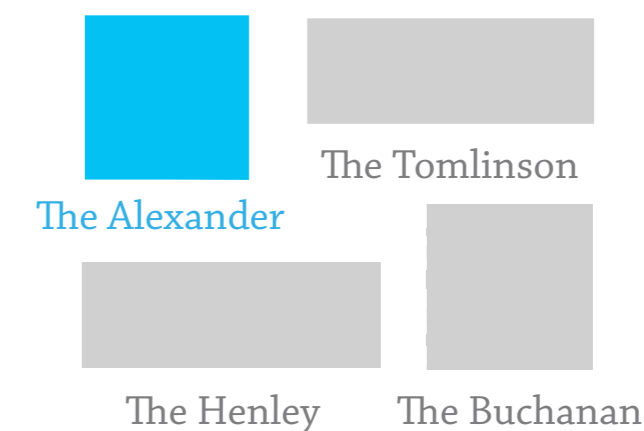
Floor plans, dimensions and configurations are included for guidance only, may be subject to revision during construction, please refer to current drawings with a Sales Consultant. Dimensions listed are not inclusive of balcony and terrace areas.



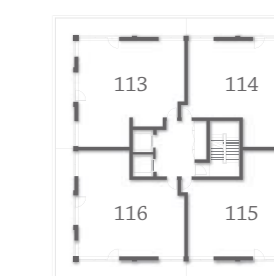
Image of previous Weston Homes development.

PLOT LOCATORS

The Alexander



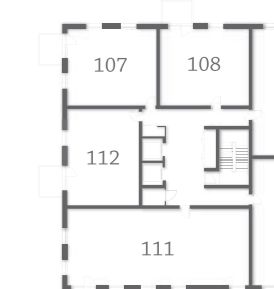
Third Floor



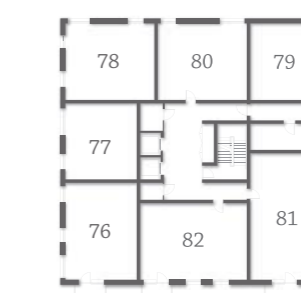
Seventh Floor



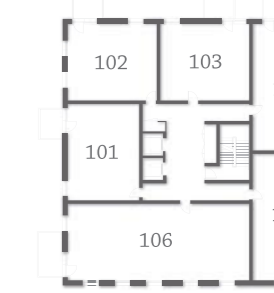
Second Floor



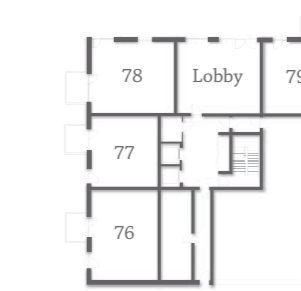
Sixth Floor



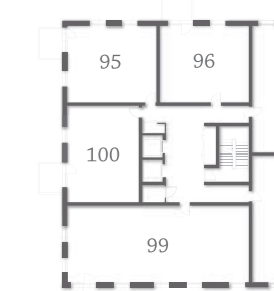
First Floor



Fifth Floor



Ground Floor



Fourth Floor