



Spacious two bedroom houses available with Shared Ownership just minutes from local amenities



Saxon Quarter

The Elmfield

College Drive, Cheltenham
Gloucestershire GL51 8NY



Call **0300 330 0718**
Visit **[sovereignliving.org.uk](https://www.sovereignliving.org.uk)**

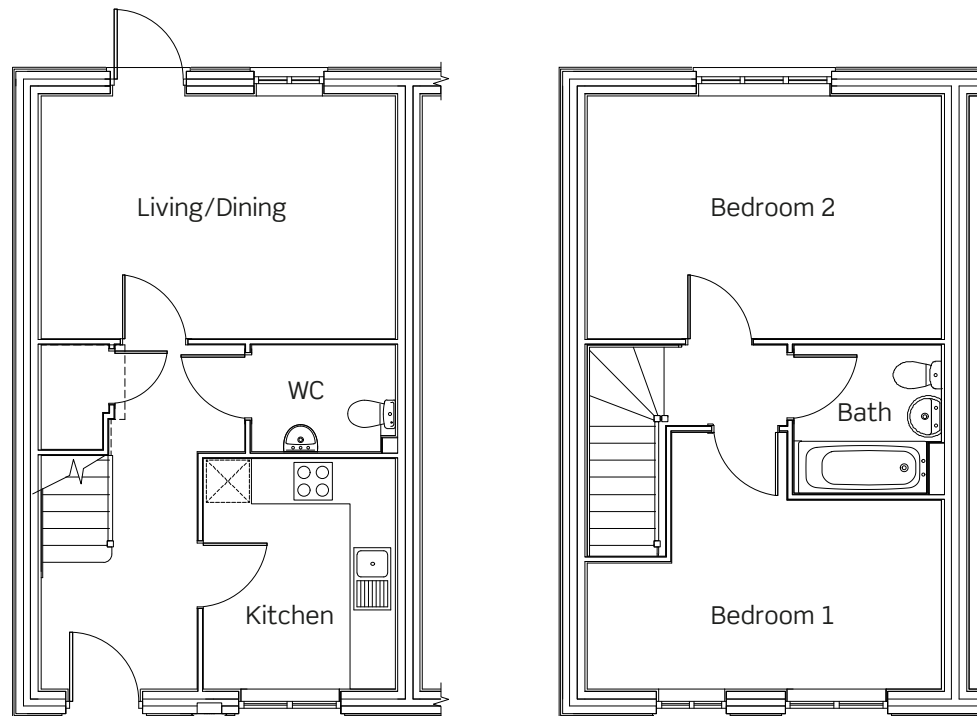
Saxon Quarter The Elmfield

Situated on the former Christ College site, this 90-home site will include a play area and leisure facilities, as well as benefitting from the nearby supermarkets and outstanding schools in the local area.

Plots 55 & 56

These new homes come complete with:

- Fitted kitchen with oven, hob and extractor
- Ground floor cloakroom
- Two parking spaces
- Enclosed rear garden with shed



Plot 56 has a mirrored layout



Saxon Quarter
College Drive
Cheltenham
Gloucestershire
GL51 8NY

Call **0300 330 0718**
Visit **sovereignliving.org.uk**

 Plots 55 & 56
The Elmfield
2 bedroom house



Plot	Property details	Price	40% share	Monthly rent	Monthly service charge	Availability
55	The Elmfield Two bedroom semi-detached house with two allocated parking spaces	£230,000	£92,000	£287.50	£23.63	October 2016
56	The Elmfield Two bedroom semi-detached house with two allocated parking spaces	£235,000	£94,000	£293.75	£23.63	October 2016

Saxon Quarter
Cheltenham

0300 330 0718
living@sovereign.org.uk