

Riverside Park

Fremington
North Devon
EX31 3FZ



Riverside Park is a superb new development offering 2 & 3 bedroom homes for shared ownership, they will be released in phases with the first two homes available now.

Situated in the quayside village of Fremington, the site benefits from a stunning semi-rural location, surrounded by unspoilt countryside.

This is a fantastic opportunity for local people to purchase a brand new home, at a sensible price.

Prices start from **£88,000** for a **40% share**



Zoopla
Smarter property search

www.dchgroup.com

For more information
contact the DCH Sales Team
01752 856 037
sales@dchgroup.com



Zoopla
Smarter property search

www.dchgroup.com

Eligibility criteria. Terms and conditions apply. Prices are subject to change and are based on a 25% share of a 2 bedroom apartment. Speak to our Sales Adviser for further details.

For more information
contact the DCH Sales Team

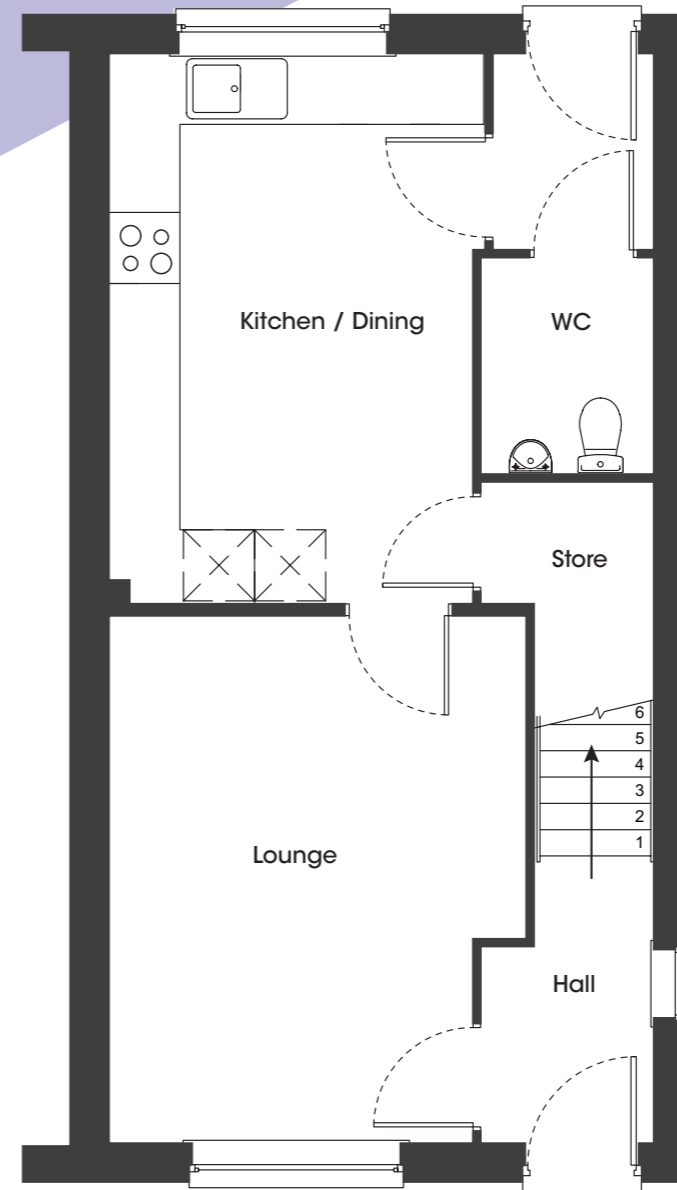
01752 856 037
sales@dchgroup.com

Site Plan

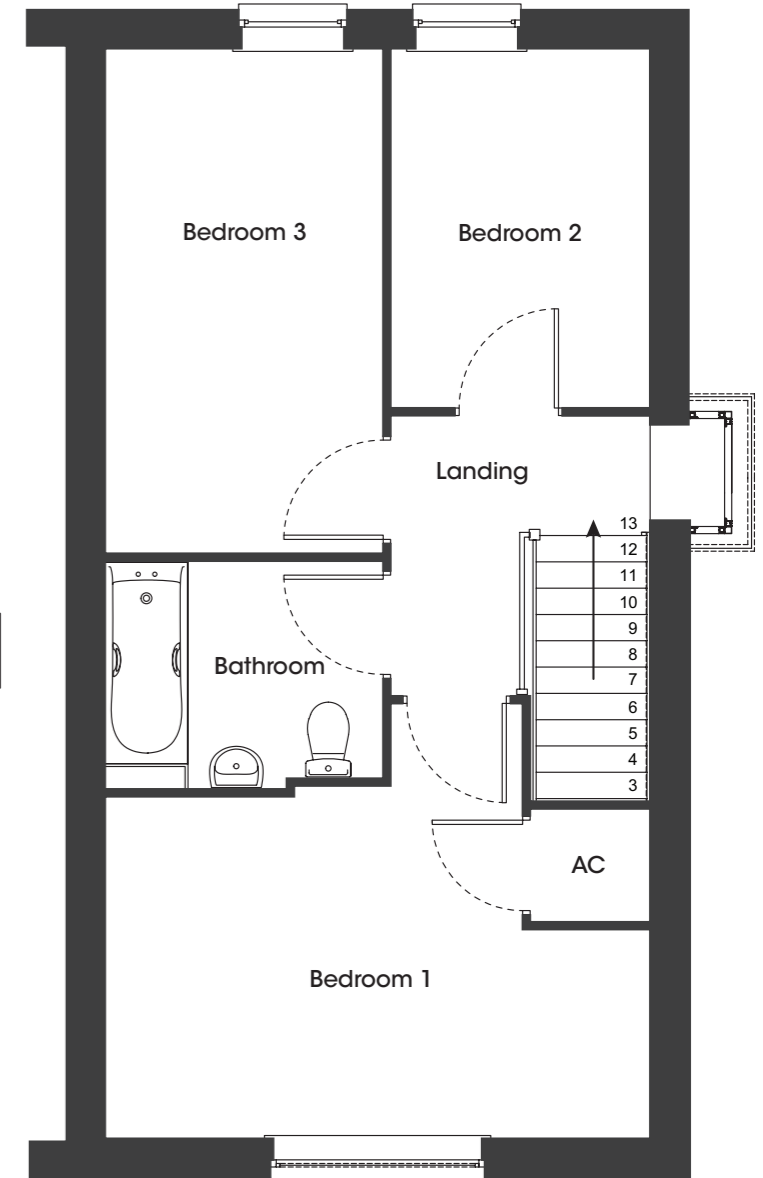


Plots 159 & 170
3 bedroom house

Plots 159 & 170 3 bedroom house



Ground floor



First floor

| Plot | House Type | Shared Ownership sale price (full value) | 40% share | Rent including Building Ins |
|-----------|---------------------------------------|--|-----------|-----------------------------|
| 159 & 170 | 3 bedroom house with 2 parking spaces | £220,000 | £88,000 | £285.41 |

The monthly rent includes buildings insurance, there will be an additional monthly fee for the management and maintenance of communal areas which is to be confirmed.

The prices are correct at the time of print but can be subject to change, speak to a Sales Adviser for further details.

The floorplans shown are for guidance only and are subject to change during construction.