



Home ownership for less

Apartments in Stevenage



Metropolitan
Improving **life** together

For further details or to arrange a viewing:

 **020 3535 2555**  **sixhillshouse.co.uk**

Six Hills House Kings Road Stevenage Hertfordshire SG1 2TP

Welcome to Six Hills House

Ideal Living

Introducing Six Hills House, an exciting new Metropolitan development offering a choice of stylish one, two and three-bedroom apartments to own in this well-connected area of Stevenage.

We are delighted to present 128 modern one and two-bedroom apartments available to own through shared ownership, the affordable way to own. There is also one, one-bedroom apartment and 14 three-bedroom apartments to own outright through private sale.

Six Hills House is within a short walking distance of Stevenage

railway station, which offers access into London King's Cross and St Pancras in little over 20 minutes, these apartments present a rare opportunity for first-time buyers to own their first home affordably, at a development where locals and those currently renting or living with family can buy.





Modern design

Six Hills House is an iconic building, renovated during the last year for residential use and conveniently located at the junction of Six Hills Way and London Road. These attractive homes, developed for Metropolitan by Land Charter Homes, offer high quality fixtures and fittings to suit modern lifestyles.

- Kitchens fitted with a selection of complementary and contrasting doors, worktops and wall units. The worktops are LED lit.
- Kitchens fitted with integrated appliances: a washer dryer, dishwasher, over the hob hood and fridge-freezer.
- Bathrooms fitted with modern white suites and double-ended baths, backlit mirrors and a shaving point.
- Bath and shower rooms are half tiled.
- Ceramic tiles in bathroom.
- Intercom/video entry system.
- Double-glazed windows throughout.
- Timber veneered flooring to bedrooms, living room, kitchen and hall.
- Sky Plus HD satellite connections to living room and master/second bedroom (subject to subscription).



Well connected

Situated a little over 20 minutes away from central London by train, this is an ideal location for commuters and locals alike. Cycleways and green spaces include the landmark Knebworth Country House and Park, and the Great North Way cycle path. Stevenage offers a range of good schooling and is served by the Lister hospital.

The town has excellent rail links to London and is within easy reach of both Luton and Stansted International Airports.

Local area

Stevenage is a town with something to offer everyone. It has a broad range of architectural styles, from the charming Tudor beams of the Old Town to the geometric precision the new town centre. They are surrounded by green spaces, well laid out residential and industrial areas and retail and leisure parks.

There is an abundance of local green space locally and Stevenage boasts over 40km of cycle ways.

The North Hertfordshire College Campus and an Asda Superstore lie opposite. There is a large selection of welcoming pubs, restaurants and boutique shops in the charming Old Town.

The Stevenage Leisure Park and the Roaring Meg Retail and Leisure Park are both in close proximity, and offer a large selection of well loved restaurants, a bowling alley and cinema complex.

Stevenage F.C. offer League Two football entertainment, while the Craig Gordon Theatre hosts cultural highlights, from household name stars of the stage and screen to showcases for local talent.

Immediately to the north of Six Hills House are six Roman barrows (which are classed as a Scheduled Ancient Monument and are protected by law) from which the building takes its name. They form the most complete Roman barrow group in the country.



Shared Ownership

You'll need to meet guideline household income requirements, calculated on an individual basis. You'll also need to pay the mortgage valuation or survey, legal fees, stamp duty (if applicable) and a deposit. We can help you find a lender and solicitor with Shared Ownership experience and expertise.

Each month, you'll make a mortgage payment on the proportion you're buying and pay us a subsidised rent on the remainder. You may also need to pay other monthly costs, including a service charge and ground rent for your home.

With Shared Ownership, you can go on to buy a further share of your new home when you can afford to (known as 'staircasing') so over a period of time, you could go on to own your home outright.

Metropolitan's home ownership service has almost 35 years

experience of providing attractive, new homes to own for those who would otherwise be priced out.

Please note, you cannot buy a Shared Ownership home if you already own a home. If you're an existing home owner we won't be able to allocate you a home unless you have your existing home firmly under offer and are deemed to be in need of housing by your local council. Our eligibility criteria is reviewed continuously and may be subject to change.

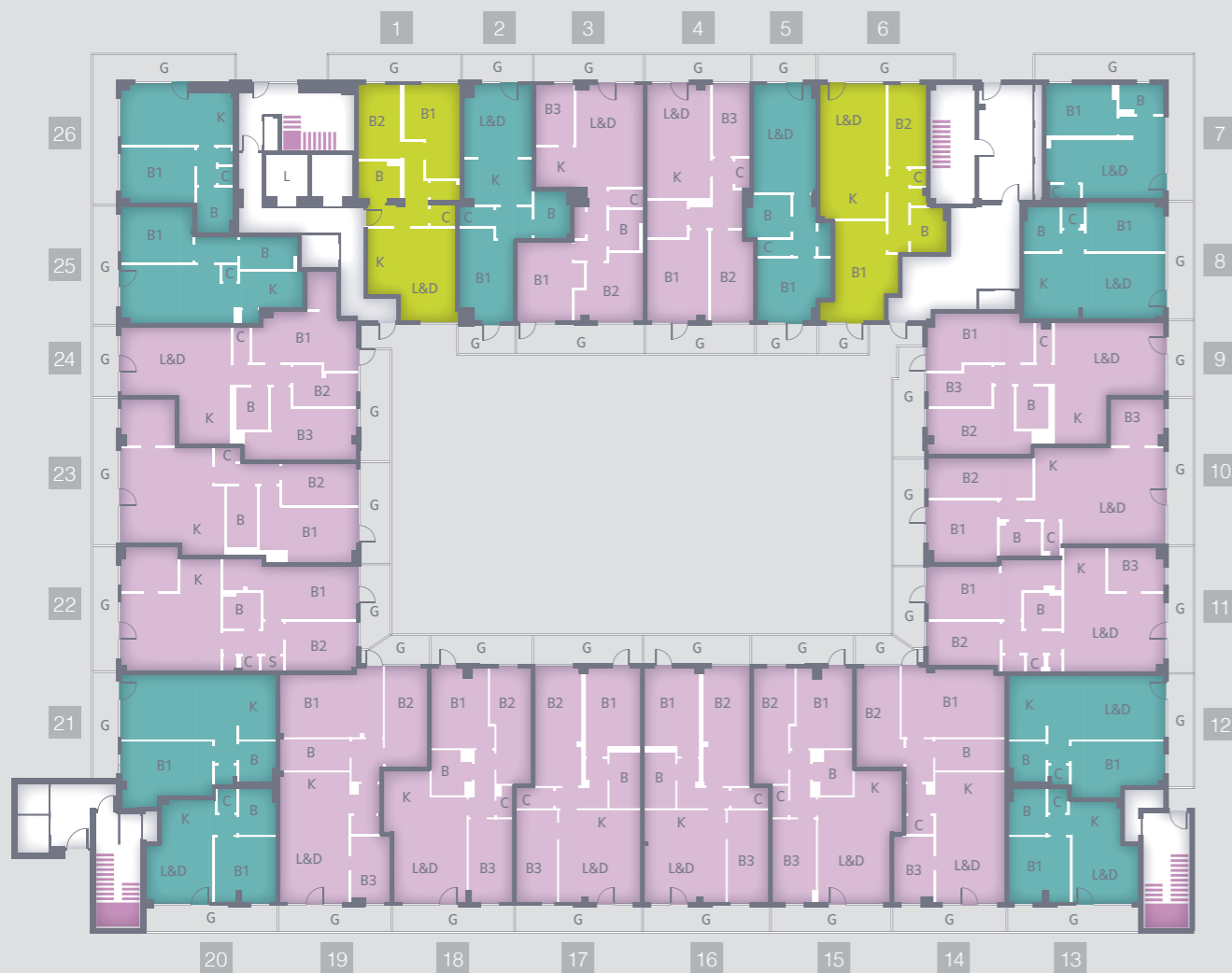


The plans for your new home

Choose from a one, two or three-bedroom home, from ground floor to eighth floor, all finished to a high, contemporary specification.

Ground floor

■	1 bedroom	L&D – Living & Dining
■	2 bedroom	K – Kitchen
■	3 bedroom	B – Bathroom
■	Common/shared area	B1,2,3 – Bedrooms
		C – Hot Water Cylinder
		G – Garden



1 bedroom apartments

Apartment 2 Ground floor

Total area:	44.5 sq m (478 sq ft)
Living space	3.75m x 3.54m (12.3ft x 11.6ft)
Kitchen	3.51m x 2.4m (11.5ft x 7.8ft)
Bedroom 1	4.76m x 2.81m (15.6ft x 9.2ft)
Bathroom	2.46m x 1.94m (8ft x 6.3ft)

Apartment 5 Ground floor

Total area:	65.8 sq m (708 sq ft)
Living space	3.23m x 2.84m (10.5ft x 9.3ft)
Kitchen	3.31m x 2.8m (10.8ft x 9.1ft)
Bedroom 1	3.84m x 3.23m (12.5ft x 10.5ft)
Bathroom	2.35m x 2.23m (7.7ft x 7.3ft)

Apartment 7 Ground floor

Total area:	36 sq m (387 sq ft)
Living space	3.25m x 3.07m (10.6ft x 10ft)
Kitchen	3m x 2.24m (9.8ft x 7.3ft)
Bedroom 1	3.69m x 2.62m (12.1ft x 8.5ft)
Bathroom	2.31m x 1.5m (7.5ft x 4.9ft)

Apartment 8 Ground floor

Total area:	43.5 sq m (468 sq ft)
Living space	3.37m x 4.41m (11ft x 14.4ft)
Kitchen	3.37m x 2.82m (11ft x 9.2ft)
Bedroom 1	4.2m x 2.59m (13.7ft x 8.4ft)
Bathroom	2.35m x 1.92m (7.7ft x 6.2ft)

Apartment 12 Ground floor

Total area:	47.5 sq m (511 sq ft)
Living space	3.34m x 4.84m (10.9ft x 15.8ft)
Kitchen	3.35m x 2m (10.9ft x 6.5ft)
Bedroom 1	4.75m x 2.95m (15.5ft x 9.6ft)
Bathroom	2.08m x 1.85m (6.8ft x 6ft)

Apartment 13 Ground floor

Total area:	35 sq m (376 sq ft)
Living space	3.02m x 3.43m (9.9ft x 11.2ft)
Kitchen	2.68m x 2.3m (8.7ft x 7.5ft)
Bedroom 1	3.37m x 3.16m (11ft x 10.3ft)
Bathroom	2.4m x 1.93m (7.8ft x 6.3ft)

Apartment 20 Ground floor

Total area:	35.6 sq m (383 sq ft)
Living space	3.45m x 3.02m (11.9ft x 9.9ft)
Kitchen	2.78m x 2.4m (9.1ft x 7.8ft)
Bedroom 1	3.38m x 3.15m (11ft x 10.3ft)
Bathroom	2.44m x 1.93m (8ft x 6.3ft)

Apartment 21 Ground floor

Total area:	49.4 sq m (531 sq ft)
Living space	4.81m x 3.34m (15.7ft x 10.9ft)
Kitchen	3.35m x 1.95m (10.9ft x 6.3ft)
Bedroom 1	2.85m x 4.73m (15.5ft x 9.3ft)
Bathroom	2.08m x 1.9m (6.8ft x 6.2ft)

1 bedroom apartments

Apartment 25 Ground floor

Total area:	44.6 sq m (480 sq ft)
Living space	3.03m x 5.97m (19.5ft x 9.9ft)
Kitchen	3.33m x 1.9m (10.9ft x 6.2ft)
Bedroom 1	3.82m x 2.91m (12.5ft x 9.5ft)
Bathroom	3m x 1.6m (9.8ft x 5.2ft)

Apartment 26 Ground floor

Total area:	38.1 sq m (410 sq ft)
Living space	3.27m x 3.63m (10.7ft x 11.9ft)
Kitchen	2.73m x 2.28m (8.9ft x 7.4ft)
Bedroom 1	2.9m x 3.9m (12.7ft x 9.5ft)
Bathroom	2.39m x 1.7m (7.8ft x 5.5ft)

2 bedroom apartments

Apartment 1 Ground floor

Total area:	57.5 sq m (618 sq ft)
Living space	4.78m x 2.84m (15.6ft x 9.3ft)
Kitchen	3.43m x 1.7m (11.2ft x 5.5ft)
Bedroom 1	4.03m x 2.96m (13.2ft x 9.7ft)
Bedroom 2	3.84m x 2.14m (12.5ft x 7ft)
Bathroom	2.14m x 1.92m (7ft x 6.2ft)

Apartment 6 Ground floor

Total area:	61.2 sq m (658 sq ft)
Living space	4.54m x 3.43m (14.8ft x 11.2ft)
Kitchen	3.44m x 2.27m (11.2ft x 7.4ft)
Bedroom 1	3.76m x 2.79m (12.3ft x 9.1ft)
Bedroom 2	4.2m x 2.02m (13.7ft x 6.6ft)
Bathroom	2.39m x 1.9m (7.8ft x 6.2ft)

3 bedroom apartments

Apartment 3 Ground floor

Total area:	66.3 sq m (713 sq ft)
Living space	5.33m x 3.6m (17.4ft x 11.8ft)
Kitchen	2.7m x 2.1m (8.8ft x 6.8ft)
Bedroom 1	4.02m x 2.85m (13.1ft x 9.3ft)
Bedroom 2	3.14m x 2.99m (10.3ft x 9.8ft)
Bedroom 3	3.1m x 2.02m (10.1ft x 6.6ft)
Bathroom	2.13m x 1.8m (6.9ft x 5.9ft)

Apartment 4 Ground floor

Total area:	53.9 sq m (580 sq ft)
Living space	3.85m x 3.34m (12.6ft x 10.9ft)
Kitchen	3.34m x 2.02m (10.9ft x 6.6ft)
Bedroom 1	4.2m x 3.22m (13.7ft x 10.5ft)
Bedroom 2	3.82m x 1.94m (12.5ft x 6.3ft)
Bedroom 3	4.09m x 2.27m (13.4ft x 7.4ft)
Bathroom	2.1m x 1.97m (6.8ft x 6.4ft)

3 bedroom apartments

Apartment 9 Ground floor

Total area:	74.9 sq m (806 sq ft)
Living space	5.65m x 3.76m (18.5ft x 12.3ft)
Kitchen	2.54m x 2.72m (8.3ft x 8.9ft)
Bedroom 1	4.8m x 2.58m (15.7ft x 8.4ft)
Bedroom 2	4.46m x 2.4m (14.6ft x 7.8ft)
Bedroom 3	3.31m x 1.76m (10.8ft x 5.7ft)
Bathroom	2.26m x 1.93m (7.4ft x 6.3ft)

Apartment 10 Ground floor

Total area:	70.2 sq m (755 sq ft)
Living space	4.95m x 4.2m (16.2ft x 13.7ft)
Kitchen	3.6m x 2.55m (11.8ft x 8.3ft)
Bedroom 1	3.2m x 3.57m (10.4ft x 11.7ft)
Bedroom 2	5.42m x 2.6m (17.7ft x 8.5ft)
Bedroom 3	5.42m x 2.6m (17.7ft x 8.5ft)
Bathroom	1.77m x 2.14m (5.8ft x 7ft)

Apartment 11 Ground floor

Total area:	72.2 sq m (777 sq ft)
Living space	4.02m x 5.30m (13.1ft x 17.3ft)
Kitchen	2.18m x 2.8m (7.1ft x 9.1ft)
Bedroom 1	2.8m x 4.85m (9.1ft x 15.9ft)
Bedroom 2	3.65m x 2.3m (11.9ft x 7.5ft)
Bedroom 3	2.9m x 2.3m (9.5ft x 7.5ft)
Bathroom	2.02m x 1.94m (6.6ft x 6.3ft)

Apartment 14 Ground floor

Total area:	78 sq m (839 sq ft)
Living space	3.63m x 4.55m (11.9ft x 14.9ft)
Kitchen	3.66m x 2.1m (12ft x 6.8ft)
Bedroom 1	5.42m x 3.5m (17.7ft x 11.4ft)
Bedroom 2	5.22m x 2.26m (17.1ft x 7.4ft)
Bedroom 3	3.38m x 2.09m (11ft x 6.8ft)
Bathroom	3.63m x 1.65m (11.9ft x 5.4ft)

Apartment 15 Ground floor

Total area:	72.2 sq m (777 sq ft)
Living space	4.4m x 3.73m (14.4ft x 12.2ft)
Kitchen	2.48m x 2.46m (8.1ft x 8ft)
Bedroom 1	4.15m x 2.87m (13.6ft x 9.4ft)
Bedroom 2	6.04m x 2.01m (19.8ft x 6.5ft)
Bedroom 3	4.28m x 2.28m (14ft x 7.4ft)
Bathroom	2.3m x 2m (7.5ft x 6.5ft)

Apartment 16 Ground floor

Total area:	72.5 sq m (780 sq ft)
Living space	4.24m x 2.31m (13.9ft x 7.5ft)
Kitchen	3.2m x 2.45m (10.4ft x 8ft)
Bedroom 1	4.28m x 2.88m (14ft x 9.4ft)
Bedroom 2	6.29m x 2.41m (20.6ft x 7.9ft)
Bedroom 3	4.9m x 2.1m (16ft x 6.8ft)
Bathroom	2.3m x 2.1m (7.5ft x 6.8ft)

3 bedroom apartments

Apartment 17 Ground floor

Total area:	72.5 sq m (780 sq ft)
Living space	4.24m x 2.31m (13.9ft x 7.5ft)
Kitchen	3.2m x 2.45m (10.4ft x 8ft)
Bedroom 1	4.28m x 2.88m (14ft x 9.4ft)
Bedroom 2	6.29m x 2.41m (20.6ft x 7.9ft)
Bedroom 3	4.9m x 2.1m (16ft x 6.8ft)
Bathroom	2.3m x 2.1m (7.5ft x 6.8ft)

Apartment 18 Ground floor

Total area:	72.2 sq m (777 sq ft)
Living space	3.78m x 3.75m (12.4ft x 12.3ft)
Kitchen	2.46m x 2.48m (8ft x 8.1ft)
Bedroom 1	4.05m x 2.98m (13.2ft x 9.7ft)
Bedroom 2	6.01m x 2m (19.7ft x 6.5ft)
Bedroom 3	4.28m x 2.28m (14ft x 7.4ft)
Bathroom	2.35m x 2.11m (7.7ft x 6.9ft)

Apartment 19 Ground floor

Total area:	77.1 sq m (829 sq ft)
Living space	4.72m x 3.66m (15.4ft x 12ft)
Kitchen	3.63m x 2.1m (11.9ft x 6.8ft)
Bedroom 1	5.38m x 3.22m (17.6ft x 10.5ft)
Bedroom 2	5.22m x 2.23m (17.1ft x 7.3ft)
Bedroom 3	3.57m x 2.06m (11.7ft x 6.7ft)
Bathroom	3.63m x 1.65m (11.9ft x 5.4ft)

Apartment 22 Ground floor

Total area:	71.3 sq m (767 sq ft)
Living space	4.02m x 5.29m (13.1ft x 17.3ft)
Kitchen	3.44m x 2.17m (11.2ft x 7.1ft)
Bedroom 1	2.77m x 4.97m (16.3ft x 9ft)
Bedroom 2	2.57m x 3.82m (12.5ft x 8.4ft)
Bedroom 3	2.88m x 2.3m (9.4ft x 7.5ft)
Bathroom	1.93m x 2m (6.5ft x 6.3ft)

Apartment 23 Ground floor




Total area:	70.4 sq m (757 sq ft)
Living space	4.98m x 3.21m (16.3ft x 10.5ft)
Kitchen	3.6m x 2.2m (11.8ft x 7.2ft)
Bedroom 1	5.2m x 2.86m (17ft x 9.3ft)
Bedroom 2	4m x 2.17m (13.1ft x 7.1ft)
Bedroom 3	4m x 2.17m (13.1ft x 7.1ft)
Bathroom	3.16m x 1.62m (10.3ft x 5.3ft)

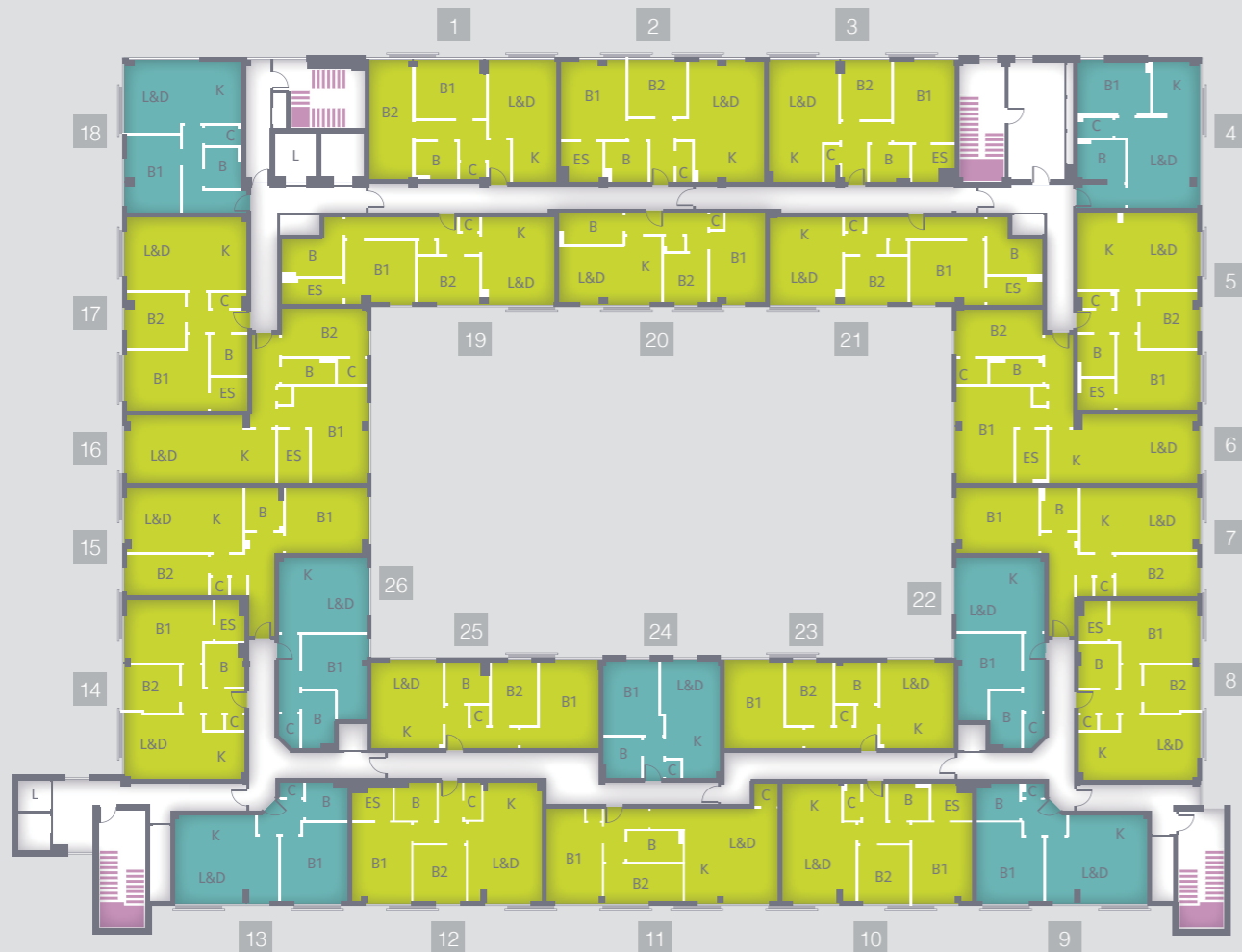
Apartment 24 Ground floor

Total area:	78.5 sq m (844 sq ft)
Living space	3.61m x 5.79m (18.9ft x 11.8ft)
Kitchen	2.79m x 2.94m (9.1ft x 9.6ft)
Bedroom 1	4.88m x 3.34m (16ft x 10.9ft)
Bedroom 2	4.42m x 2.79m (14.5ft x 9.1ft)
Bedroom 3	3.46m x 1.96m (11.3ft x 6.4ft)
Bathroom	2.23m x 1.7m (7.3ft x 5.5ft)



First and second floor

	1 bedroom	L&D – Living & Dining
	2 bedroom	K – Kitchen
	Common/shared area	B – Bathroom
		ES – Ensuite
		B1,2,3 – Bedrooms
		C – Hot Water Cylinder



1 bedroom apartments

Apartment 4 First/second floor

Total area:	44.4 sq m (477 sq ft)
Living space	3.48m x 3.48m (11.4ft x 11.4ft)
Kitchen	2.4m x 2.6m (7.8ft x 8.5ft)
Bedroom 1	3.62m x 2.6m (11.8ft x 8.5ft)
Bathroom	2.04m x 2.48m (6.6ft x 8.1ft)

Apartment 9 First/second floor

Total area:	44 sq m (473 sq ft)
Living space	5.14m x 2.4m (16.8ft x 7.8ft)
Kitchen	4m x 1.95m (13.1ft x 6.3ft)
Bedroom 1	4.16m x 3.41m (13.6ft x 11.1ft)
Bathroom	2.13m x 1.9m (6.9ft x 6.2ft)

Apartment 13 First/second floor

Total area:	43.3 sq m (466 sq ft)
Living space	5.23m x 2.49m (17.1ft x 8.1ft)
Kitchen	4.07m x 1.85m (13.3ft x 6ft)
Bedroom 1	3.25m x 3.39m (10.6ft x 11.1ft)
Bathroom	2.13m x 1.96m (6.9ft x 6.4ft)

Apartment 18 First/second floor

Total area:	44.5 sq m (478 sq ft)
Living space	3.59m x 3.42m (11.7ft x 11.2ft)
Kitchen	3.08m x 1.91m (10.1ft x 6.2ft)
Bedroom 1	3.96m x 2.7m (12.9ft x 8.8ft)
Bathroom	2.1m x 1.81m (6.8ft x 5.9ft)

Apartment 22 First/second floor

Total area:	39.8 sq m (428 sq ft)
Living space	3.81m x 2.57m (12.5ft x 8.4ft)
Kitchen	2.81m x 1.8m (9.2ft x 5.9ft)
Bedroom 1	3.19m x 3.17m (10.4ft x 10.4ft)
Bathroom	2.9m x 1.58m (9.5ft x 5.1ft)

Apartment 24 First/second floor

Total area:	34.8 sq m (374 sq ft)
Living space	2.97m x 2.66m (9.7ft x 8.7ft)
Kitchen	3.14m x 2.75m (10.3ft x 9ft)
Bedroom 1	3.7m x 2.8m (12.1ft x 9.1ft)
Bathroom	2.1m x 1.88m (6.8ft x 6.1ft)

Apartment 26 First/second floor

Total area:	40 sq m (430 sq ft)
Living space	3.78m x 2.53m (12.4ft x 8.3ft)
Kitchen	2.81m x 2.4m (9.2ft x 7.8ft)
Bedroom 1	3.24m x 2.81m (10.6ft x 9.2ft)
Bathroom	2.88m x 1.64m (9.4ft x 5.3ft)

2 bedroom apartments

Apartment 1 First/second floor

Total area:	55.8 sq m (600 sq ft)
Living space	3.42m x 3.86m (11.2ft x 12.6ft)
Kitchen	3.2m x 2.23m (10.4ft x 7.3ft)
Bedroom 1	2.88m x 3.58m (11.7ft x 9.4ft)
Bedroom 2	5.84m x 2.17m (19.1ft x 7.1ft)
Bathroom	1.9m x 2.1m (6.8ft x 6.2ft)

Apartment 2 First/second floor

Total area:	62.8 sq m (675 sq ft)
Living space	3.8m x 3.58m (12.4ft x 11.7ft)
Kitchen	3.54m x 2.16m (11.6ft x 7ft)
Bedroom 1	4.07m x 3.31m (13.3ft x 10.8ft)
Bedroom 2	2.98m x 2.98m (9.7ft x 9.7ft)
Bathroom	2.09m x 2.06m (6.8ft x 6.7ft)
Ensuite	2.09m x 2.06m (6.8ft x 6.7ft)

Apartment 3 First/second floor

Total area:	57.5 sq m (618 sq ft)
Living space	3.67m x 3.57m (12ft x 11.7ft)
Kitchen	3.57m x 2.6m (11.7ft x 8.5ft)
Bedroom 1	4.1m x 3.1m (13.4ft x 10.1ft)
Bedroom 2	2.91m x 2.53m (9.5ft x 8.3ft)
Bathroom	2.1m x 1.9m (6.8ft x 6.2ft)
Ensuite	2.81m x 1.37m (9.2ft x 4.4ft)

Apartment 5 First/second floor

Total area:	61.5 sq m (661 sq ft)
Living space	3.99m x 3.78m (13ft x 12.4ft)
Kitchen	3.99m x 2.3m (13ft x 7.5ft)
Bedroom 1	4.11m x 3m (13.4ft x 9.8ft)
Bedroom 2	2.93m x 2.9m (9.6ft x 9.5ft)
Bathroom	2.12m x 1.92m (6.9ft x 6.2ft)
Ensuite	1.61m x 1.9m (6.2ft x 5.2ft)

Apartment 6 First/second floor

Total area:	70.3 sq m (756 sq ft)
Living space	3.81m x 3.43m (12.5ft x 11.2ft)
Kitchen	4m x 1.6m (13.1ft x 5.2ft)
Bedroom 1	4.83m x 4.13m (15.8ft x 13.5ft)
Bedroom 2	4.3m x 2.34m (14.1ft x 7.6ft)
Bathroom	2.7m x 1.28m (8.8ft x 4.1ft)
Ensuite	2.7m x 1.6m (8.8ft x 5.2ft)

Apartment 7 First/second floor

Total area:	56.6 sq m (609 sq ft)
Living space	3.3m x 3.5m (10.8ft x 11.4ft)
Kitchen	3.3m x 2.38m (10.8ft x 7.8ft)
Bedroom 1	4.12m x 3.3m (13.5ft x 10.8ft)
Bedroom 2	4.09m x 2.1m (13.4ft x 6.8ft)
Bathroom	2.2m x 1.92m (7.2ft x 6.2ft)

Apartment 8 First/second floor

Total area:	54.7 sq m (588 sq ft)
Living space	3.3m x 3.04m (10.8ft x 9.9ft)
Kitchen	3.3m x 2.15m (10.8ft x 7ft)
Bedroom 1	4.41m x 3.21m (14.4ft x 10.5ft)
Bedroom 2	2.67m x 2.33m (8.7ft x 7.6ft)
Bathroom	2.2m x 1.9m (7.2ft x 6.2ft)
Ensuite	2.05m x 1.5m (6.7ft x 4.9ft)

Apartment 10 First/second floor

Total area:	57.6 sq m (620 sq ft)
Living space	3.69m x 2.92m (12.1ft x 9.5ft)
Kitchen	2.97m x 2m (9.7ft x 6.5ft)
Bedroom 1	3.99m x 3.06m (13ft x 10ft)
Bedroom 2	2.8m x 2.6m (9.1ft x 8.5ft)
Bathroom	2.1m x 1.9m (6.8ft x 6.2ft)
Ensuite	2.07m x 1.9m (6.7ft x 6.2ft)

Apartment 11 First/second floor

Total area:	56.9 sq m (612 sq ft)
Living space	4.64m x 2.77m (15.2ft x 9ft)
Kitchen	3.68m x 1.86m (12ft x 6.1ft)
Bedroom 1	4.64m x 2.8m (15.2ft x 9.1ft)
Bedroom 2	3.98m x 1.95m (13ft x 6.3ft)
Bathroom	2.85m x 1.58m (9.3ft x 5.1ft)

Apartment 12 First/second floor

Total area:	57.8 sq m (622 sq ft)
Living space	3.72m x 3.27m (12.2ft x 10.7ft)
Kitchen	3m x 2m (9.8ft x 6.5ft)

Apartment 16 First/second floor

Total area:	70.8 sq m (762 sq ft)
Living space	3.46m x 3.43m (11.3ft x 11.2ft)
Kitchen	4m x 2.01m (13.1ft x 6.5ft)
Bedroom 1	4.83m x 2.8m (15.8ft x 9.1ft)
Bedroom 2	4.28m x 2.47m (14ft x 8.1ft)
Ensuite 1	2.7m x 1.69m (8.8ft x 5.5ft)

Apartment 14 First/second floor

Total area:	54.5 sq m (586 sq ft)
Living space	3.28m x 2.93m (10.7ft x 9.6ft)
Kitchen	2.42m x 2.15m (7.9ft x 7ft)
Bedroom 1	3.95m x 3.16m (12.9ft x 10.3ft)
Bedroom 2	2.59m x 2.45m (8.4ft x 8ft)
Bathroom	2.2m x 1.96m (7.2ft x 6.4ft)
Ensuite	2.1m x 1.5m (6.8ft x 4.9ft)

Apartment 15 First/second floor

Total area:	56.5 sq m (608 sq ft)
Living space	3.52m x 3.3m (12.4ft x 8.3ft)
Kitchen	3.3m x 2.38m (10.8ft x 7.8ft)
Bedroom 1	4.12m x 3.3m (13.5ft x 10.8ft)
Bedroom 2	4.12m x 2.1m (13.5ft x 6.8ft)
Bathroom	2.2m x 1.94m (7.2ft x 6.3ft)

Bedroom 1	3.99m x 3.91m (13ft x 12.8ft)
Bedroom 2	2.8m x 2.68m (9.1ft x 8.7ft)
Bathroom	2.12m x 1.92m (6.9ft x 6.2ft)
Ensuite	2.1m x 2.2m (7.2ft x 6.8ft)

2 bedroom apartments

Apartment 17 First/second floor

Total area:	59.4 sq m (639 sq ft)
Living space	3.71m x 3.24m (12.1ft x 10.6ft)
Kitchen	3.71m x 1.8m (12.1ft x 5.9ft)
Bedroom 1	4.13m x 3.28m (13.5ft x 10.7ft)
Bedroom 2	2.92m x 2.87m (9.5ft x 9.4ft)
Bathroom	2.1m x 1.9m (6.8ft x 6.2ft)
Ensuite	1.9m x 1.66m (6.2ft x 5.4ft)

Apartment 19 First/second floor

Total area:	57.7 sq m (621 sq ft)
Living space	3.72m x 2.69m (12.2ft x 8.8ft)
Kitchen	3.72m x 1.81m (12.2ft x 5.9ft)
Bedroom 1	3.54m x 3.2m (11.6ft x 10.4ft)
Bedroom 2	3.17m x 2.29m (10.4ft x 7.5ft)
Bathroom	3.09m x 2.26m (10.7ft x 7.4ft)
Ensuite	3.1m x 1.3m (10.1ft x 4.2ft)

Apartment 20 First/second floor

Total area:	47.4 sq m (510 sq ft)
Living space	3.3m x 2.87m (10.8ft x 9.4ft)
Kitchen	3.51m x 1.86m (11.5ft x 6.1ft)
Bedroom 1	4.57m x 2.8m (14.9ft x 9.1ft)
Bedroom 2	2.55m x 2.23m (8.3ft x 7.3ft)
Bathroom	3.2m x 1.6m (10.4ft x 5.2ft)

Apartment 21 First/second floor

Total area:	59 sq m (635 sq ft)
Living space	3.71m x 2.64m (12.1ft x 8.6ft)
Kitchen	3.71m x 1.8m (12.1ft x 5.9ft)
Bedroom 1	3.25m x 3.82m (10.6ft x 12.5ft)
Bedroom 2	3.16m x 2.3m (10.3ft x 7.5ft)
Bathroom	2.81m x 2.2m (9.2ft x 7.2ft)
Ensuite	2.12m x 1.9m (6.9ft x 6.2ft)

Apartment 23 First/second floor

Total area:	50.8 sq m (546 sq ft)
Living space	3.68m x 2.36m (12ft x 7.7ft)
Kitchen	3.68m x 1.67m (12ft x 5.4ft)
Bedroom 1	4.35m x 2.96m (14.2ft x 9.7ft)
Bedroom 2	2.49m x 3.24m (10.6ft x 8.1ft)
Bathroom	2.11m x 2.24m (7.3ft x 6.9ft)

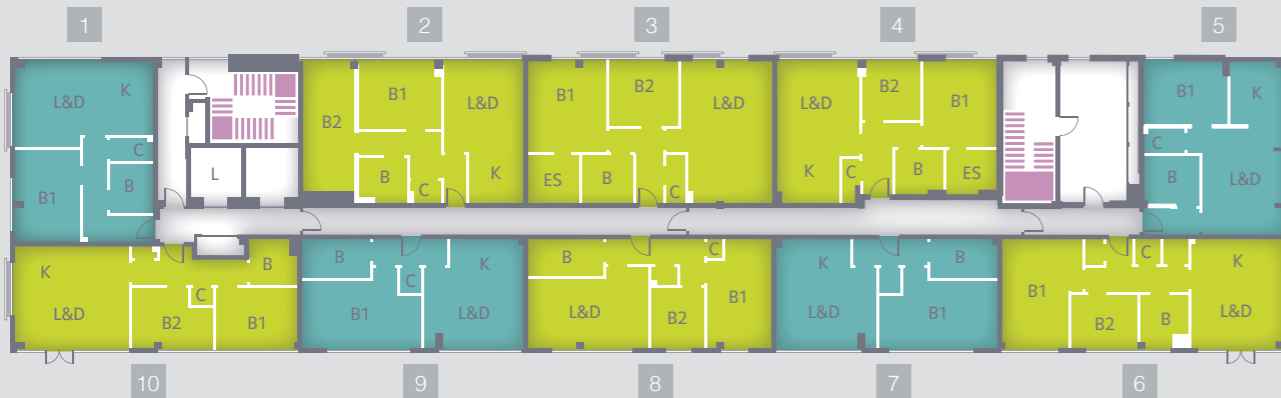
Apartment 25 First/second floor

Total area:	50.8 sq m (546 sq ft)
Living space	3.68m x 2.36m (12ft x 7.7ft)
Kitchen	3.68m x 1.67m (12ft x 5.4ft)
Bedroom 1	4.35m x 2.96m (14.2ft x 9.7ft)
Bedroom 2	2.49m x 3.24m (10.6ft x 8.1ft)
Bathroom	2.11m x 2.24m (7.3ft x 6.9ft)



Third to seventh floor

 1 bedroom	L&D – Living & Dining
 2 bedroom	K – Kitchen
 Common/shared area	B – Bathroom
	B – Ensuite
	B1,2,3 – Bedrooms
	C – Hot Water Cylinder



1 bedroom apartments

Apartment 1 Third to seventh floor

Total area:	45 sq m (484 sq ft)
Living space	3.85m x 3.61m (12.6ft x 11.8ft)
Kitchen	3.17m x 1.92m (10.4ft x 6.2ft)
Bedroom 1	3.88m x 2.79m (12.7ft x 9.1ft)
Bathroom	2.1m x 1.82m (6.8ft x 5.9ft)

Apartment 5 Third to seventh floor

Total area:	44.5 sq m (478 sq ft)
Living space	3.55m x 3.49m (11.6ft x 11.4ft)
Kitchen	2.65m x 2.48m (8.6ft x 8.1ft)
Bedroom 1	3.76m x 2.58m (12.3ft x 8.4ft)
Bathroom	2.39m x 2.04m (7.8ft x 6.6ft)

Apartment 7 Third to seventh floor

Total area:	43.3 sq m (466 sq ft)
Living space	4.27m x 2.73m (14ft x 8.9ft)
Kitchen	3.16 x 1.93m (10.3ft x 6.3ft)
Bedroom 1	5.02m x 2.81m (16.4ft x 9.2ft)
Bathroom	2.93m x 1.68m (9.6ft x 5.5ft)

Apartment 9 Third to seventh floor

Total area:	43.4 sq m (467 sq ft)
Living space	4.24m x 2.7m (13.9ft x 8.8ft)
Kitchen	3.14m x 1.9m (10.3ft x 6.2ft)
Bedroom 1	5.13m x 2.81m (16.8ft x 9.2ft)
Bathroom	2.94m x 1.65m (9.6ft x 5.4ft)

2 bedroom apartments

Apartment 2 Third to seventh floor

Total area:	56 sq m (602 sq ft)
Living space	3.43m x 2.96m (11.2ft x 9.7ft)
Kitchen	3.2m x 2.3m (10.4ft x 7.5ft)
Bedroom 1	3.54m x 2.74m (11.6ft x 8.9ft)
Bedroom 2	5.5m x 2.13m (18ft x 6.9ft)
Bathroom	2.08m x 1.89m (6.8ft x 6.2ft)

Apartment 3 Third to seventh floor

Total area:	63.1 sq m (679 sq ft)
Living space	3.87m x 3.85m (12.6ft x 12.6ft)
Kitchen	3.59m x 2.19m (11.7ft x 7.1ft)
Bedroom 1	3.85m x 3.29m (12.6ft x 10.7ft)
Bedroom 2	2.98m x 2.85m (9.7ft x 9.3ft)
Bathroom	2.21m x 2.09m (7.2ft x 6.8ft)
Ensuite	2.19m x 2.06m (7.1ft x 6.7ft)

2 bedroom apartments

Apartment 4 Third to seventh floor

Total area:	54.4 sq m (585 sq ft)
Living space	3.44m x 3.18m (11.2ft x 10.4ft)
Kitchen	2.65m x 2.6m (8.6ft x 8.5ft)
Bedroom 1	3.65m x 3.05m (11.9ft x 10.1ft)
Bedroom 2	2.52m x 2.45m (8.2ft x 8ft)
Bathroom	2.1m x 1.9m (6.8ft x 6.2ft)
Ensuite	2.04m x 1.87m (6.6ft x 6.1ft)

Apartment 6 Third to seventh floor

Total area:	55.3 sq m (595 sq ft)
Living space	3.97m x 2.52m (13ft x 8.2ft)
Kitchen	3.97m x 1.64m (13ft x 5.3ft)
Bedroom 1	4.6m x 2.75m (15ft x 9ft)
Bedroom 2	2.87m x 2.23m (9.4ft x 9.3ft)
Bathroom	2.14m x 1.99m (7ft x 6.5ft)

Apartment 8 Third to seventh floor

Total area:	48 sq m (516 sq ft)
Living space	3.3m x 2.83m (10.8ft x 9.2ft)
Kitchen	3.57m x 1.32m (11.7ft x 4.3ft)
Bedroom 1	4.59m x 2.8m (15ft x 9.1ft)
Bedroom 2	2.56m x 2.25m (8.3ft x 7.3ft)
Bathroom	3.2m x 1.89m (10.4ft x 6.2ft)

Apartment 10 Third to seventh floor

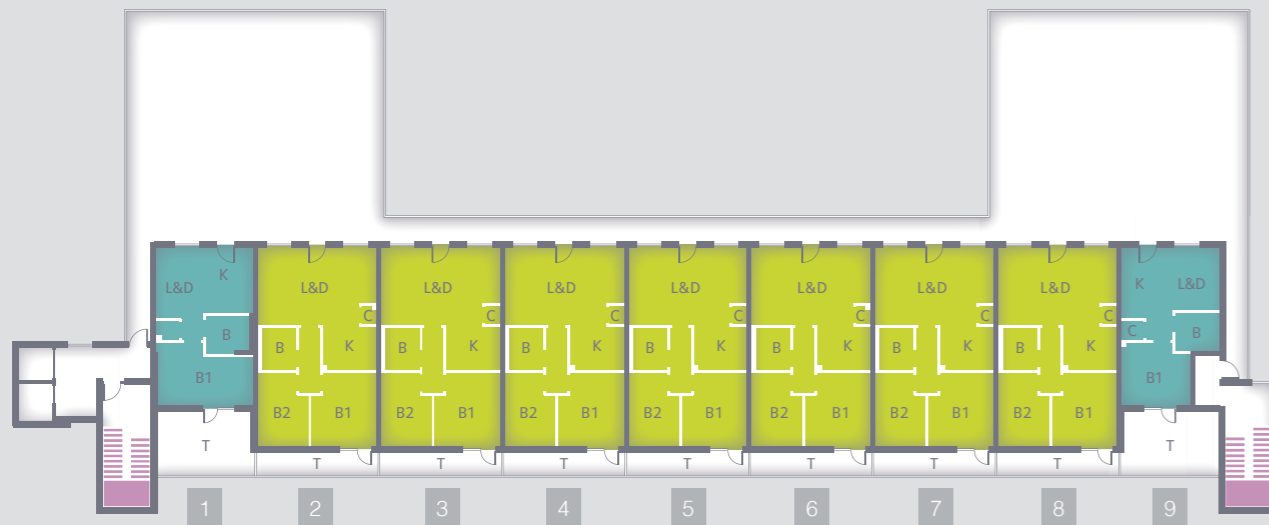
Total area:	50.8 sq m (546 sq ft)
Living space	4.94m x 2.75m (16.2ft x 9ft)
Kitchen	4.84m x 1.58m (15.8ft x 5.1ft)
Bedroom 1	3.48m x 2.53m (11.4ft x 8.3ft)
Bedroom 2	3.5m x 2.53m (11.4ft x 8.3ft)
Bathroom	2.03m x 1.93m (6.6ft x 6.3ft)



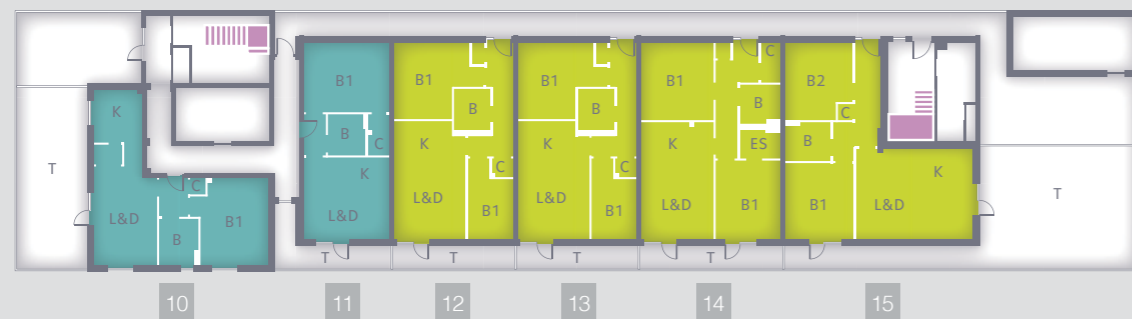
Third and eighth floor

 1 bedroom	L&D – Living & Dining
 2 bedroom	K – Kitchen
 Common/shared area	B – Bathroom
	ES – Ensuite
	B1,2,3 – Bedrooms
	C – Hot Water Cylinder
	T – Private Terrace

Third floor



Eighth floor



1 bedroom apartments

Apartment 1 Third floor

Total area:	35.1 sq m (377 sq ft)
Living space	3.32m x 2.84m (10.8ft x 9.3ft)
Kitchen	3.12m x 1.9m (10.2ft x 6.2ft)
Bedroom 1	4.66m x 2.32m (15.2ft x 7.6ft)
Bathroom	2.28m x 1.87m (7.4ft x 6.1ft)

Apartment 9 Third floor

Total area:	31.7 sq m (341 sq ft)
Living space	2.18m x 2.08m (7.1ft x 6.8ft)
Kitchen	3.35m x 1.62m (10.9ft x 5.3ft)
Bedroom 1	3.31m x 3m (10.8ft x 9.8ft)
Bathroom	2.1m x 1.9m (6.8ft x 6.2ft)

Apartment 10 Eighth floor

Total area:	46.1 sq m (496 sq ft)
Living space	3.23m x 3.03m (10.5ft x 9.9ft)
Kitchen	2.48m x 2.3m (8.1ft x 7.5ft)
Bedroom 1	4.25m x 3.29m (13.9ft x 10.7ft)
Bathroom	2.24m x 1.92m (7.3ft x 6.2ft)

Apartment 11 Eighth floor

Total area:	37.8 sq m (406 sq ft)
Living space	4.18m x 2.19m (13.7ft x 7.1ft)
Kitchen	3.18m x 2m (10.4ft x 6.5ft)
Bedroom 1	4.24m x 3.04m (13.9ft x 9.9ft)
Bathroom	2.02m x 1.84m (6.6ft x 6ft)

2 bedroom apartments

Apartment 2 Third floor

Total area:	53.6 sq m (576 sq ft)
Living space	5.78m x 3.68m (18.9ft x 12ft)
Kitchen	2.64m x 2.2m (8.6ft x 7.2ft)
Bedroom 1	3.26m x 3.37m (10.6ft x 11ft)
Bedroom 2	3.54m x 2.45m (11.6ft x 8ft)
Bathroom	2.1m x 1.73m (6.8ft x 5.6ft)

Apartment 3 Third floor

Total area:	53.6 sq m (576 sq ft)
Living space	5.78m x 3.68m (18.9ft x 12ft)
Kitchen	2.64m x 2.2m (8.6ft x 7.2ft)
Bedroom 1	3.26m x 3.37m (10.6ft x 11ft)
Bedroom 2	3.54m x 2.45m (11.6ft x 8ft)
Bathroom	2.1m x 1.73m (6.8ft x 5.6ft)

2 bedroom apartments

Apartment 4 Third floor

Total area:	53.6 sq m (576 sq ft)
Living space	5.78m x 3.68m (18.9ft x 12ft)
Kitchen	2.64m x 2.2m (8.6ft x 7.2ft)
Bedroom 1	3.26m x 3.37m (10.6ft x 11ft)
Bedroom 2	3.54m x 2.45m (11.6ft x 8ft)
Bathroom	2.1m x 1.73m (6.8ft x 5.6ft)

Apartment 5 Third floor

Total area:	53.6 sq m (576 sq ft)
Living space	5.78m x 3.68m (18.9ft x 12ft)
Kitchen	2.64m x 2.2m (8.6ft x 7.2ft)
Bedroom 1	3.26m x 3.37m (10.6ft x 11ft)
Bedroom 2	3.54m x 2.45m (11.6ft x 8ft)
Bathroom	2.1m x 1.73m (6.8ft x 5.6ft)

Apartment 6 Third floor

Total area:	53.6 sq m (576 sq ft)
Living space	5.78m x 3.68m (18.9ft x 12ft)
Kitchen	2.64m x 2.2m (8.6ft x 7.2ft)
Bedroom 1	3.26m x 3.37m (10.6ft x 11ft)
Bedroom 2	3.54m x 2.45m (11.6ft x 8ft)
Bathroom	2.1m x 1.73m (6.8ft x 5.6ft)

Apartment 7 Third floor

Total area:	53.6 sq m (576 sq ft)
Living space	5.78m x 3.68m (18.9ft x 12ft)
Kitchen	2.64m x 2.2m (8.6ft x 7.2ft)
Bedroom 1	3.26m x 3.37m (10.6ft x 11ft)
Bedroom 2	3.54m x 2.45m (11.6ft x 8ft)
Bathroom	2.1m x 1.73m (6.8ft x 5.6ft)

Apartment 8 Third floor

Total area:	53.6 sq m (576 sq ft)
Living space	5.78m x 3.68m (18.9ft x 12ft)
Kitchen	2.64m x 2.2m (8.6ft x 7.2ft)
Bedroom 1	3.26m x 3.37m (10.6ft x 11ft)
Bedroom 2	3.54m x 2.45m (11.6ft x 8ft)
Bathroom	2.1m x 1.73m (6.8ft x 5.6ft)

Apartment 12 Eighth floor

Total area:	52.2 sq m (561 sq ft)
Living space	3.45m x 2.49m (11.3ft x 8.1ft)
Kitchen	3.48m x 2.42m (11.4ft x 7.9ft)
Bedroom 1	3.63m x 3.39m (11.9ft x 11.1ft)
Bedroom 2	3.53m x 2.23m (11.5ft x 7.3ft)
Bathroom	2m x 1.79m (6.5ft x 5.8ft)

Apartment 13 Eighth floor

Total area:	52.2 sq m (561 sq ft)
Living space	3.45m x 2.49m (11.3ft x 8.1ft)
Kitchen	3.48m x 2.42m (11.4ft x 7.9ft)
Bedroom 1	3.63m x 3.39m (11.9ft x 11.1ft)
Bedroom 2	3.53m x 2.23m (11.5ft x 7.3ft)
Bathroom	2m x 1.79m (6.5ft x 5.8ft)

Apartment 14 Eighth floor

Total area:	60.8 sq m (654 sq ft)
Living space	3.5m x 2.94m (11.4ft x 9.6ft)
Kitchen	3.5m x 2.4m (11.4ft x 10.4ft)
Bedroom 1	3.49m x 3.2m (11.4ft x 11.2ft)
Bedroom 2	3.5m x 3.44m (6.6ft x 6.2ft)
Bathroom	2.03m x 1.9m (6.7ft x 6.2ft)
Ensuite	2.05m x 1.9m (6.7ft x 6.2ft)

Apartment 15 Eighth floor

Total area:	59.4 sq m (639 sq ft)
Living space	5.71m x 2.07m (18.7ft x 6.7ft)
Kitchen	4.65m x 1.97m (15.2ft x 6.4ft)
Bedroom 1	3.35m x 3.34m (10.9ft x 10.9ft)
Bedroom 2	3.44m x 3.28m (11.2ft x 10.7ft)
Bathroom	2.2m x 1.9m (7.2ft x 6.2ft)

Disclaimer:

These brief particulars are intended as a convenient guide to supplement an inspection or survey and do not form, or form part of, any offer or contract. Their accuracy is not guaranteed.

They contain statements of opinion and in some instances we have relied on information supplied by third parties. Metropolitan undertakes continuous product development and products may vary from any information given. Design elements, room dimensions and specification details may change or vary 'as built' without further notice. You should verify the particulars on your visit to the property and the particulars do not obviate the need for a full structural survey and all the appropriate enquiries.

Accordingly, there shall be no liability as a result of any error or omission in the particulars or any information given. Your home is at risk if you do not keep up repayments on a mortgage or any other loan secured on it.

Floor plans correct at time of print but subject to change. Please check with Sales Officer for most up to date version. More up to date floor plans will be added online.

© Metropolitan 2016