

Saxon Meadows

Off Main Road, Kempsey, Worcestershire



Lioncourt Homes

Development Layout

Saxon Meadows, Kempsey

Signature Collection

- The Beech
4 bedroom home
- The Maple
4 bedroom home
- The Birch
4 bedroom home
- The Walnut
4 bedroom home
- The Cedar
4 bedroom home
- The Chestnut
4 bedroom home
- The Oak
4 bedroom home

Lioncourt Homes

- The Hawthorn
2 bedroom home
- The Elm
3 bedroom home
- The Alder
3 bedroom home
- The Ash
3 bedroom home
- The Aspen
3 bedroom home
- Affordable Housing
2, 3 & 4 bedroom homes



Lioncourt Homes

Please note: The site plan is for orientation purposes only and all surfaces, landscaping and layouts should be checked with the Sales Adviser at the time of reservation. Parking arrangements and boundaries to be checked by purchaser prior to reservation

The Elm

3 bedroom home



Kitchen/Dining

4.40m x 2.66m (14'5" x 8'9")

Living Room

3.50m x 4.83m (11'6" x 15'10")

WC

1.93m x 0.94m (6'4" x 3'1")

Bedroom 1

4.02m x 2.68m (13'3" x 8'10")

En-Suite

1.28m x 2.68m (4'3" x 8'10")

Bedroom 2

3.01m x 2.68m (9'11" x 8'10")

Bedroom 3

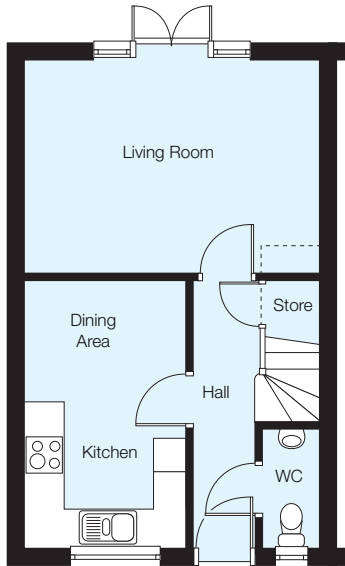
2.93m x 2.07m (9'8" x 6'10")

Bathroom

1.93m x 2.07m (6'4" x 6'10")

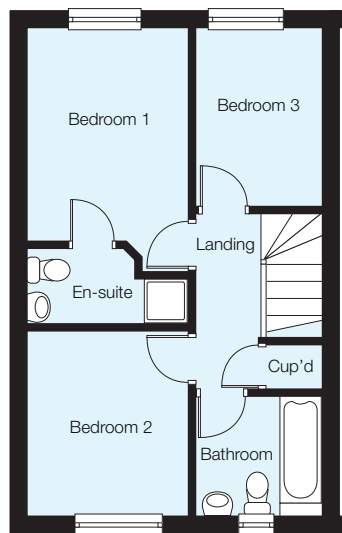
NB: All dimensions are maximum and may vary from plot to plot

The Elm is a traditionally styled three bedroom semi-detached house which offers convenient and well laid out accommodation. The living room opens onto the garden through French doors, ideal for summer evenings. There is an open plan kitchen - dining room, perfect for entertaining. For convenience, there's a downstairs cloakroom and a useful understairs store. The master bedroom has its own en-suite bathroom with shower, washbasin and toilet. There is also a second double bedroom, a third single bedroom and a fully equipped family bathroom.



NB: Selected plots have additional windows to the side elevations. Please ask our Sales Adviser for further details.

Ground Floor



First Floor

Please note:

Illustration and plans show a typical house type. The house type may be built in a range of elevational finishes using a variety of materials. Floor plans and window positions may vary from plot to plot. This is because we operate a policy of continuous improvement and we work within the needs of the Planning Authorities. Please ask your Sales Adviser for precise details of the finish and specifications of your chosen home.



Lioncourt Homes

Lioncourt House, 3 Apex Park, Wainwright Road, Warndon, Worcester, WR4 9FN
Telephone: 01905 755167 Email: info@lioncourthomes.com www.lioncourthomes.com



SM-08.15

The Aspen

3 bedroom home



Kitchen/Dining

3.40m x 5.65m (11'2" x 18'7")

Living Room

4.67m x 3.45m (15'4" x 11'4")

WC

1.82m x 0.92m (6'0" x 3'0")

Bedroom 1

3.95m x 3.47m (13'0" x 11'5")

En-Suite

1.20m x 3.47m (3'11" x 11'5")

Bedroom 2

2.90m x 3.47m (9'6" x 11'5")

Bedroom 3

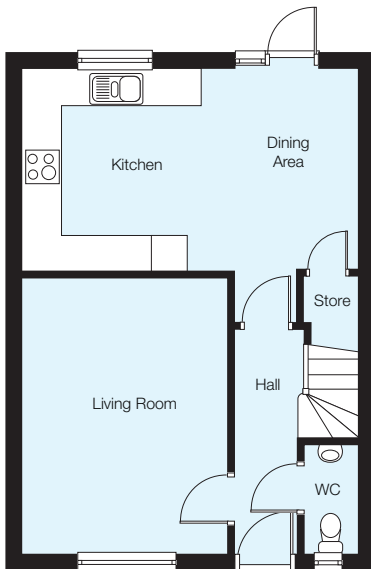
2.40m x 2.83m (7'11" x 9'4")

Bathroom

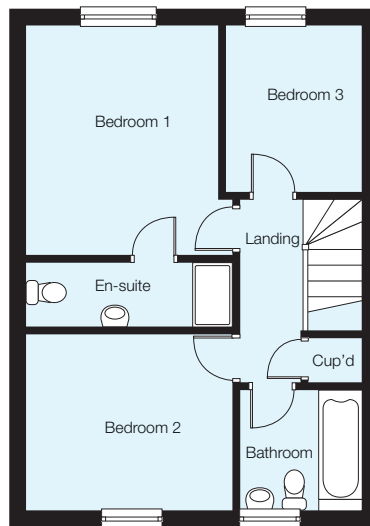
1.88m x 2.08m (6'2" x 6'10")

NB: All dimensions are maximum and may vary from plot to plot

The Aspen is a well proportioned three bedroom house with an intriguing gable fronted design. Design details include wooden barge boarding to the top of the gable end and a canopied porch, which adds to its charm. Inside, a front facing living room and an open plan dining - kitchen with door to the garden, provide practical every day living space. There is also a downstairs cloakroom and a useful understairs store. The master bedroom has generously proportioned en-suite shower room with a larger than average shower and there's a fully equipped family bathroom.



Ground Floor



First Floor

Please note:

Illustration and plans show a typical house type. The house type may be built in a range of elevational finishes using a variety of materials. Floor plans and window positions may vary from plot to plot. This is because we operate a policy of continuous improvement and we work within the needs of the Planning Authorities. Please ask your Sales Adviser for precise details of the finish and specifications of your chosen home.



Lioncourt Homes

Lioncourt House, 3 Apex Park, Wainwright Road, Warndon, Worcester, WR4 9FN
Telephone: 01905 755167 Email: info@lioncourthomes.com www.lioncourthomes.com

SM-08.15



The Hawthorn

2 bedroom home



Kitchen

2.52m x 2.51m (8'4" x 8'3")

Living/Dining

3.83m x 4.70m (12'7" x 15'6")

WC

1.63m x 0.96m (5'4" x 3'2")

Bedroom 1

3.29m x 3.65m (10'10" x 12'0")

En-Suite

1.63m x 1.59m (5'4" x 5'3")

Bedroom 2

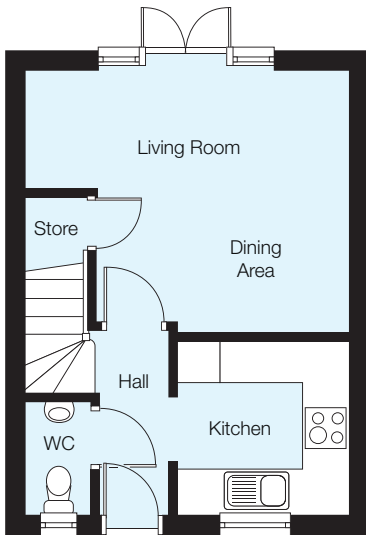
3.06m x 2.68m (10'1" x 8'10")

Bathroom

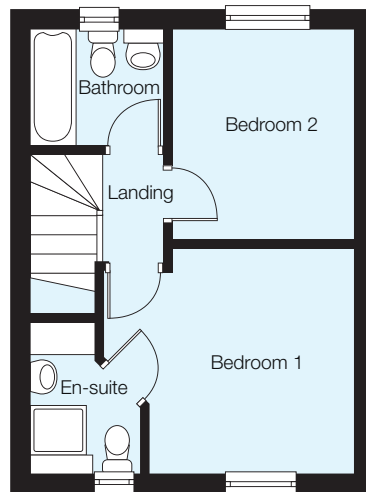
1.70m x 1.93m (5'7" x 6'4")

NB: All dimensions are maximum and may vary from plot to plot

The Hawthorn is a two bedroom semi-detached home that offers a standard of accommodation that you would usually associate with a much larger property. Not only is there a large open plan living - dining room with French doors that open onto the rear garden, but there is also a well equipped kitchen, a downstairs cloakroom and a useful understairs store. Upstairs there are two double bedrooms, with the master bedroom having a fully fitted en-suite shower room. There is, of course also a well equipped family bathroom.



Ground Floor



First Floor

Please note:

Illustration and plans show a typical house type. The house type may be built in a range of elevational finishes using a variety of materials. Floor plans and window positions may vary from plot to plot. This is because we operate a policy of continuous improvement and we work within the needs of the Planning Authorities. Please ask your Sales Adviser for precise details of the finish and specifications of your chosen home.



Lioncourt Homes

Lioncourt House, 3 Apex Park, Wainwright Road, Warndon, Worcester, WR4 9FN
Telephone: 01905 755167 Email: info@lioncourthomes.com www.lioncourthomes.com

SM-08.15



The Ash

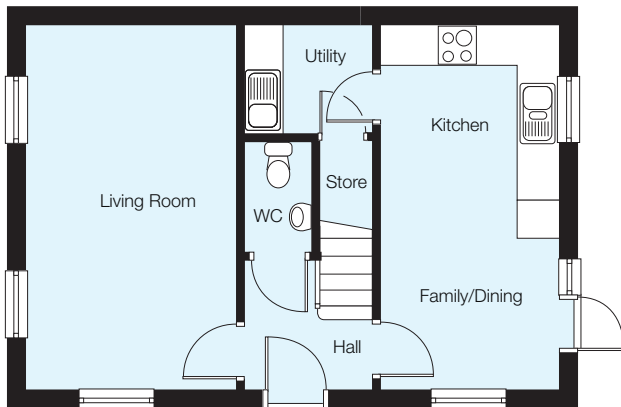
3 bedroom home



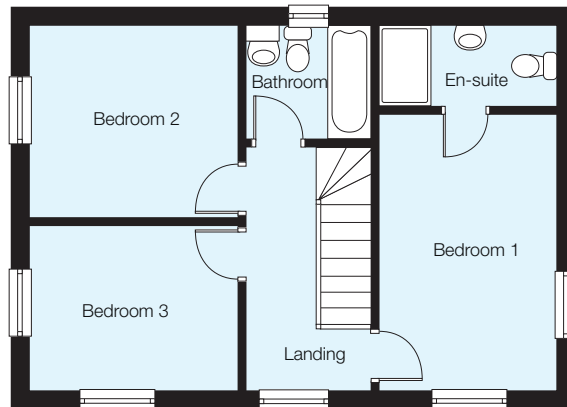
Kitchen/Family	5.65m x 2.76m (18'7" x 9'1")
Living Room	5.65m x 3.22m (18'7" x 10'7")
Utility Room	1.72m x 2.00m (5'8" x 6'7")
WC	1.77m x 1.01m (5'10" x 3'4")
Bedroom 1	4.36m x 2.76m (14'4" x 9'1")
En-Suite	1.20m x 2.76m (3'11" x 9'1")
Bedroom 2	3.08m x 3.27m (10'1" x 10'9")
Bedroom 3	2.48m x 3.27m (8'2" x 10'9")
Bathroom	1.71m x 2.00m (5'7" x 6'7")

NB: All dimensions are maximum and may vary from plot to plot

The Ash is a stylish, wide fronted three bedroom house that makes a really practical family home. There's a front facing living room, an open plan dining - kitchen with a door to the garden and a downstairs cloakroom just off the hall. A separate utility room and a useful understairs store add to the practicality. Upstairs are two double bedrooms and a third single bedroom. The master bedroom has a fully equipped en-suite with a large shower and there is a fully fitted family bathroom.



Ground Floor



First Floor

Please note:

Illustration and plans show a typical house type. The house type may be built in a range of elevational finishes using a variety of materials. Floor plans and window positions may vary from plot to plot. This is because we operate a policy of continuous improvement and we work within the needs of the Planning Authorities. Please ask your Sales Adviser for precise details of the finish and specifications of your chosen home.



Lioncourt Homes

Lioncourt House, 3 Apex Park, Wainwright Road, Warndon, Worcester, WR4 9FN
Telephone: 01905 755167 Email: info@lioncourthomes.com www.lioncourthomes.com

SM-08.15



The Alder

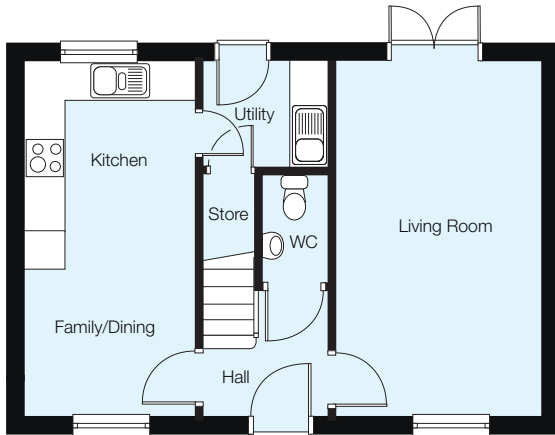
3 bedroom home



Kitchen/Family	5.65m x 2.76m (18'7" x 9'1")
Living Room	5.65m x 3.22m (18'7" x 10'7")
Utility Room	1.72m x 2.00m (5'8" x 6'7")
WC	1.77m x 1.01m (5'10" x 3'4")
Bedroom 1	4.36m x 2.76m (14'4" x 9'1")
En-Suite	1.20m x 2.76m (3'11" x 9'1")
Bedroom 2	3.08m x 3.27m (10'1" x 10'9")
Bedroom 3	2.48m x 3.27m (8'2" x 10'9")
Bathroom	1.71m x 2.00m (5'7" x 6'7")

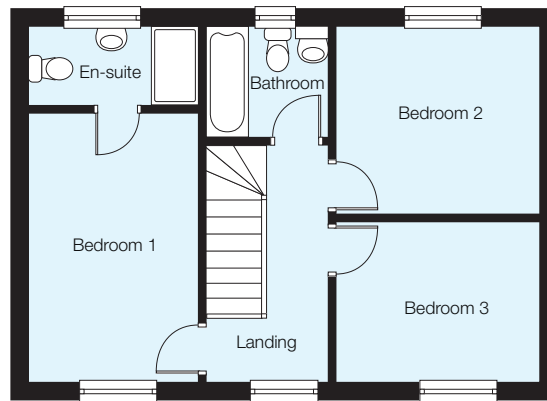
NB: All dimensions are maximum and may vary from plot to plot

The Alder is a wide fronted three bedroom home with a full depth living room that has French doors opening onto the rear garden. The open plan kitchen - dining - family room is the heart of the house and leads into a utility room that offers the added convenience of opening onto the rear garden. There is also downstairs cloakroom and an understairs store. Upstairs are three generously proportioned bedrooms. The master bedroom has its own en-suite shower room with an extra wide shower, wash basin and wc and there is a fully equipped family bathroom.



Ground Floor

NB: Selected plots have additional windows to the side elevations. Please ask our Sales Adviser for further details.



First Floor

Please note:

Illustration and plans show a typical house type. The house type may be built in a range of elevational finishes using a variety of materials. Floor plans and window positions may vary from plot to plot. This is because we operate a policy of continuous improvement and we work within the needs of the Planning Authorities. Please ask your Sales Adviser for precise details of the finish and specifications of your chosen home.

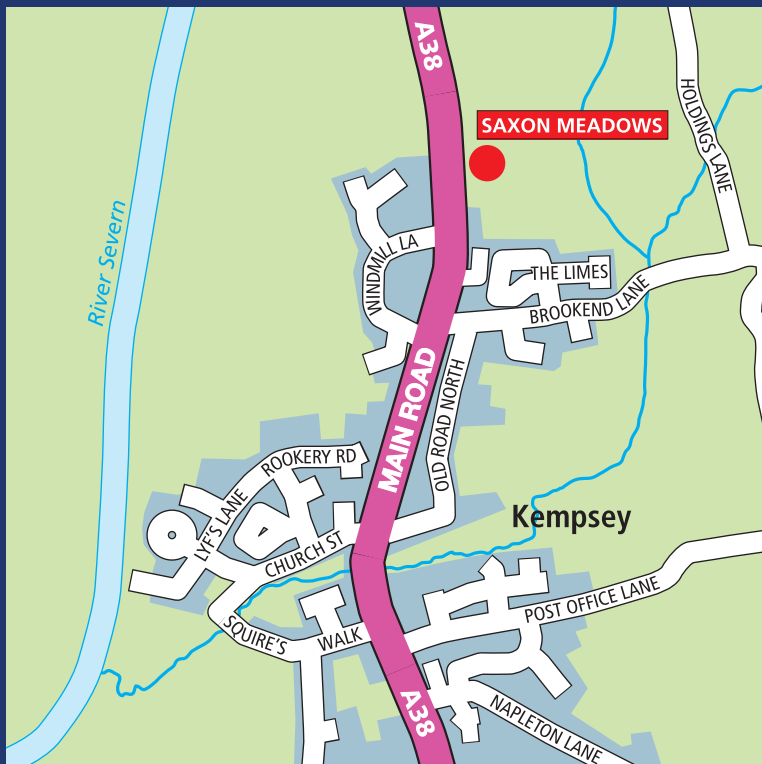
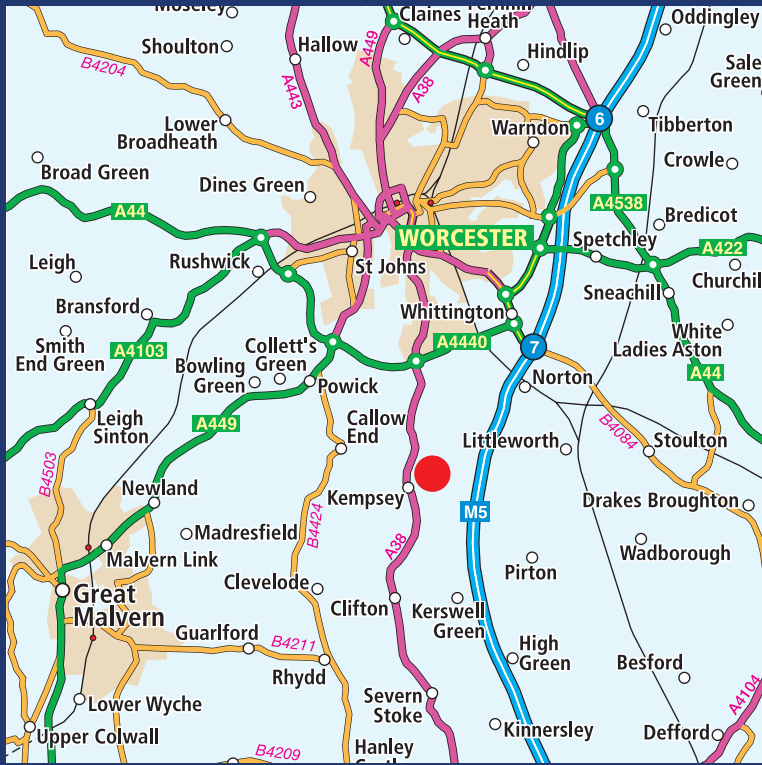


Lioncourt Homes

Lioncourt House, 3 Apex Park, Wainwright Road, Warndon, Worcester, WR4 9FN
Telephone: 01905 755167 Email: info@lioncourthomes.com www.lioncourthomes.com

SM-08.15





Where to find your new home:
 Saxon Meadows, Off Main Road, Kempsey,
 Worcestershire, WR5 3LH
 Telephone: 07701 289539*
 Email: saxonmeadows@lioncourtsales.com



Lioncourt Homes

Lioncourt Homes Limited, Lioncourt House, 3 Apex Park, Wainwright Road, Warndon, Worcester, WR4 9FN
 Telephone: 01905 755167 Email: info@lioncourthomes.com www.lioncourthomes.com

*Call rates may vary, the cost of your call will vary depending on your landline or mobile phone provider

