



# East Street.

Bedminster, Bristol

A range of 2 bedroom  
Shared Ownership apartments.







Bedminster, Bristol



Clifton Suspension Bridge, Bristol

# Discover Bedminster.

**A new collection of contemporary 1 and 2-bedroom Shared Ownership apartments located on East Street, Bristol.**

With an assortment of shops and bars on your doorstep for day-to-day needs and Ideally located just 10 minute walk from Bristol City Centre 66 East Street is the perfect urban retreat for you to work rest and play.

Home to the renowned Upfest street art festival and the second largest area for shopping in the city of Bristol, Bedminster spans East Street, West Street and North Street.

For commuters, Bedminster Station is a short walk away, where funding is in place to reopen a direct line to Portishead and Temple Meads Train Station is just a 10-minute walk away and there are regular bus services into the City Centre and the rest of Bristol.



Bristol

**You'll notice that on most of our property listings we say that a local connection to the area is needed.**

This is because the homes for sale in these areas have been built specifically to help meet the needs of local people who would struggle to get on the housing ladder any otherwise.

The local area connection criteria varies between sites, but generally it's based on:

- Being a resident (or employed within) the area for a number of years (usually between 2 to 5)
- Family connections – for example, parent, grandparent, child, grandchild or adult sibling – who have lived in the area for at least three years.

**Priority will be given to applicants who have a connection to Bristol in that order.**

If you need any more information on Local Area Connection guidelines, please speak to one of our helpful sales consultants.

## Next steps

- Find a Bromford Shared Ownership home on our website
- Check the local area connection
- Get in touch via our website, or by calling 0800 0852 499 and we'll be happy to talk you through the next steps.
- More information at [findahome.bromford.co.uk/shared-ownership](https://findahome.bromford.co.uk/shared-ownership)



# Are you dreaming of owning your own home but think you can't afford it?

**Think again – Shared Ownership can make that dream a reality.**

Shared Ownership is a scheme that allows you to buy a share of your property, usually between 40% and 75%, and pay subsidised rent on the rest.

It's a great way to get on the property ladder and often proves to be more affordable than renting.

There are certain criteria that you need to match to be eligible for Shared Ownership. Find out more at [findahome.bromford.co.uk](http://findahome.bromford.co.uk).





# East Street

Bedminster, Bristol, BS3 4HD



 Block A

 Block C

Homes are split between Shared Ownership and Bromford rent.  
Ask your sales consultant for details

Artist's impression drawn from architect's plans to show the relative position of individual properties. NOT TO SCALE. This is a two dimensional drawing and will not show land contours and gradients, boundary treatments, landscaping or local authority street lighting. Please contact our sales team for more information.

# The Bantock

## Block A



The Bantock two bedroom Shared Ownership apartments has all the sophistication of apartment city life required in vibrant Bristol.

There's a spacious carpeted master bedroom and a second double bedroom which could be used as a home office with high-speed fibre optic broadband, enabling you to work from home with ease. A stylish white bathroom complete with tiling, heated towel rail, shaving point LED lighting and oak effect flooring completes this home.

The apartment block offers fully secure intercom and door entry system and a lift that ensures accessibility to all floors. There's also a secure bike store and recycling and bin store. Once completed there will be communal outdoor space for you to enjoy.

Our main features for these apartments are as follows;

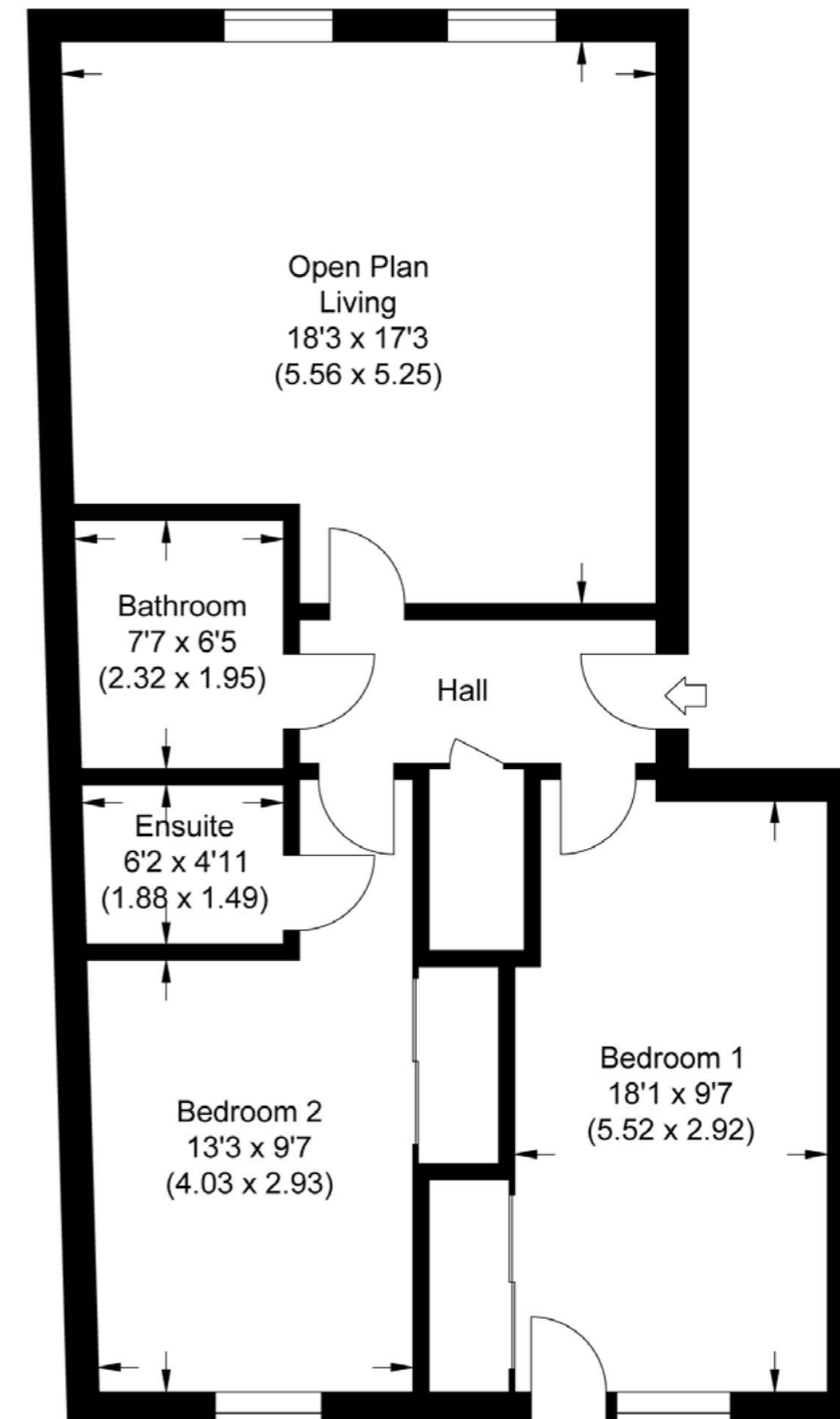
- Energy-efficient apartment
- High-performance insulation throughout
- Open plan living area with Juliet balcony
- Integrated dishwasher
- Stylish bathroom with heated towel rail
- Two double bedroom
- Plenty of useful Storage
- Audio entry system
- High-speed fibre optic broadband
- Secure bike store with keypad access
- Underfloor heating

Computer generated artists impression only. The image shown is for illustrative purposes only. Brick and tile colour, window and door styles, elevational treatments and external landscaping may vary. Please consult our sales team.

# The Dartmoor

## A1 - ground floor

[findahome.bromford.co.uk](http://findahome.bromford.co.uk)  
[sales@bromford.co.uk](mailto:sales@bromford.co.uk)  
0800 0852 499

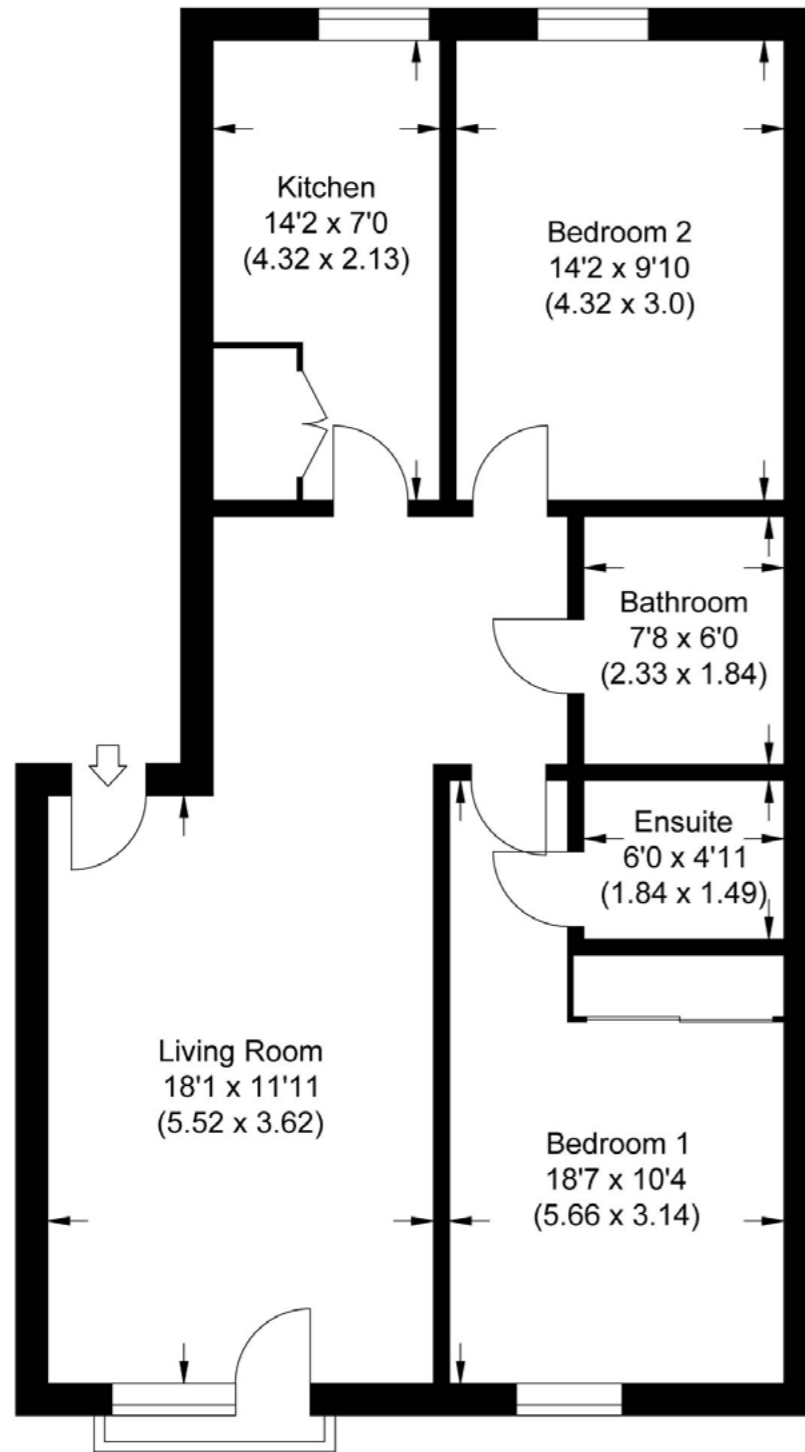


Due to the nature of construction, room sizes may vary and purchasers are advised to satisfy themselves as to their accuracy. These dimensions are not intended to be used for carpet sizes, appliance spaces or items of furniture. Please note that the windows positions may vary, please speak with our Sales Consultants for each individual plot information. For electrical, heating and kitchen specification please contact our sales team.

# The Merrywood

A2 - ground floor

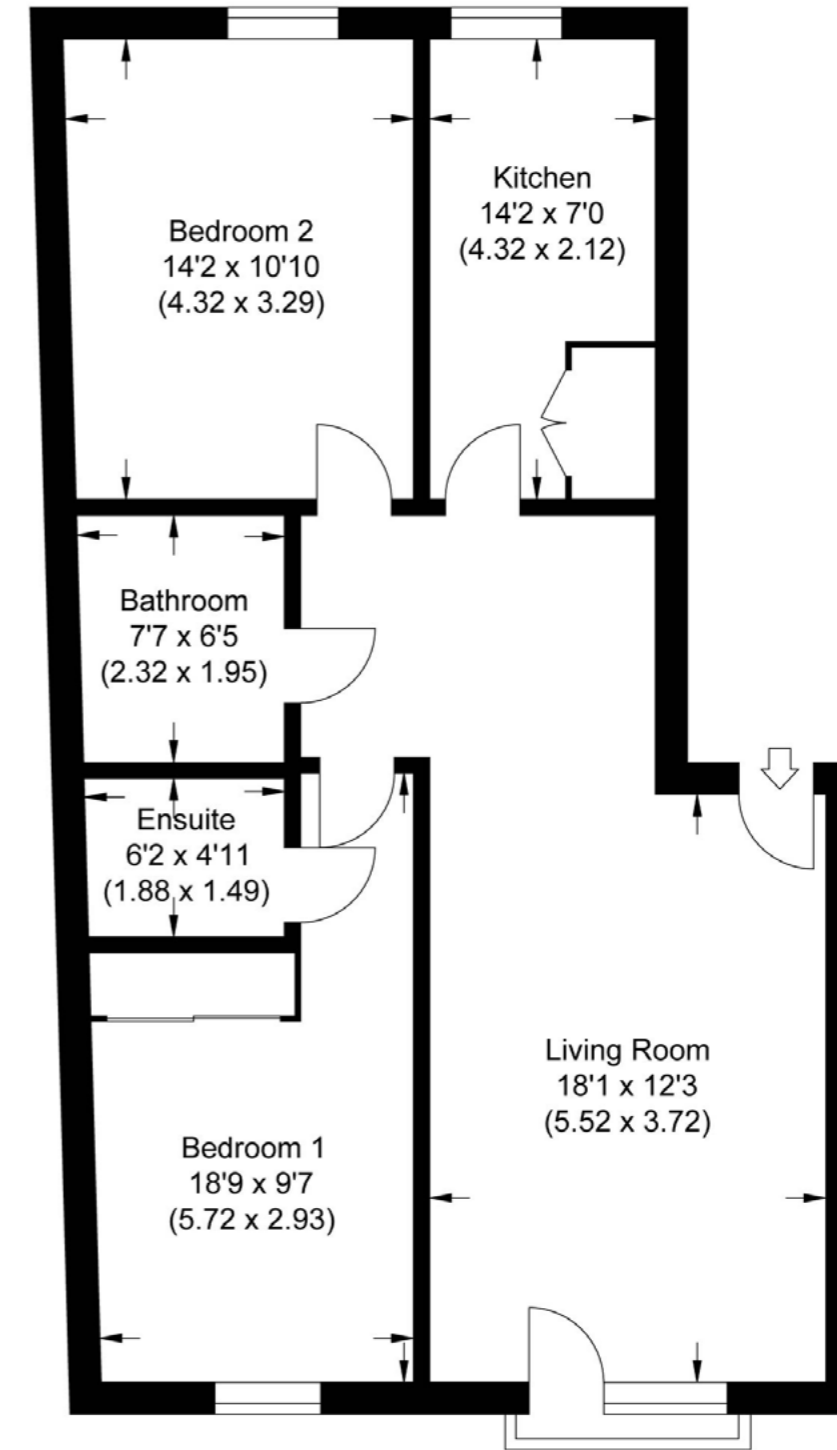
[findahome.bromford.co.uk](http://findahome.bromford.co.uk)  
[sales@bromford.co.uk](mailto:sales@bromford.co.uk)  
0800 0852 499



# The Murray

A3 - first floor

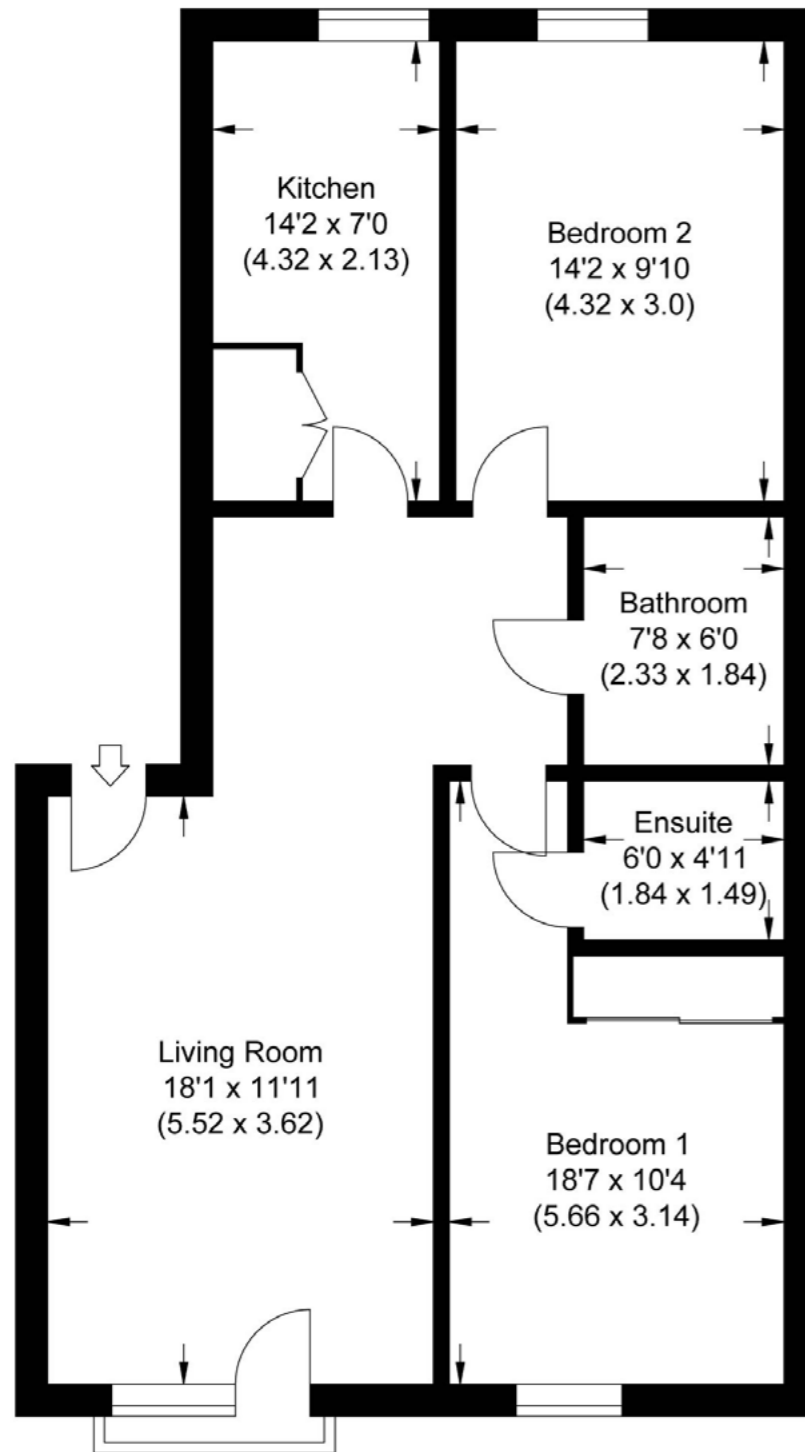
[findahome.bromford.co.uk](http://findahome.bromford.co.uk)  
[sales@bromford.co.uk](mailto:sales@bromford.co.uk)  
0800 0852 499



# The Merrywood

A4 - first floor

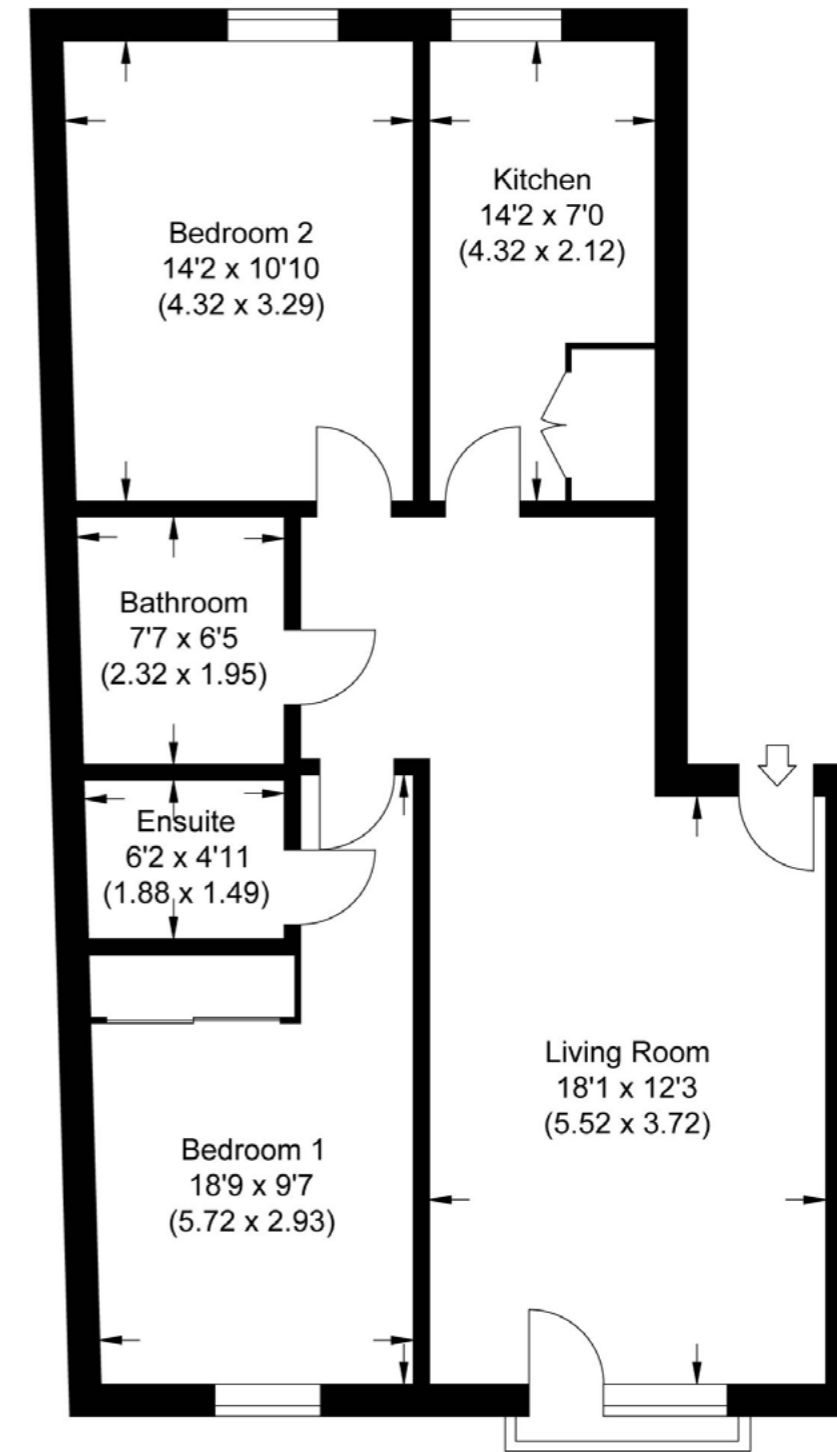
[findahome.bromford.co.uk](http://findahome.bromford.co.uk)  
[sales@bromford.co.uk](mailto:sales@bromford.co.uk)  
0800 0852 499



# The Murray

A5 - second floor

[findahome.bromford.co.uk](http://findahome.bromford.co.uk)  
[sales@bromford.co.uk](mailto:sales@bromford.co.uk)  
0800 0852 499





# The Merrywood

A6 - third floor

[findahome.bromford.co.uk](http://findahome.bromford.co.uk)

[sales@bromford.co.uk](mailto:sales@bromford.co.uk)

0800 0852 499

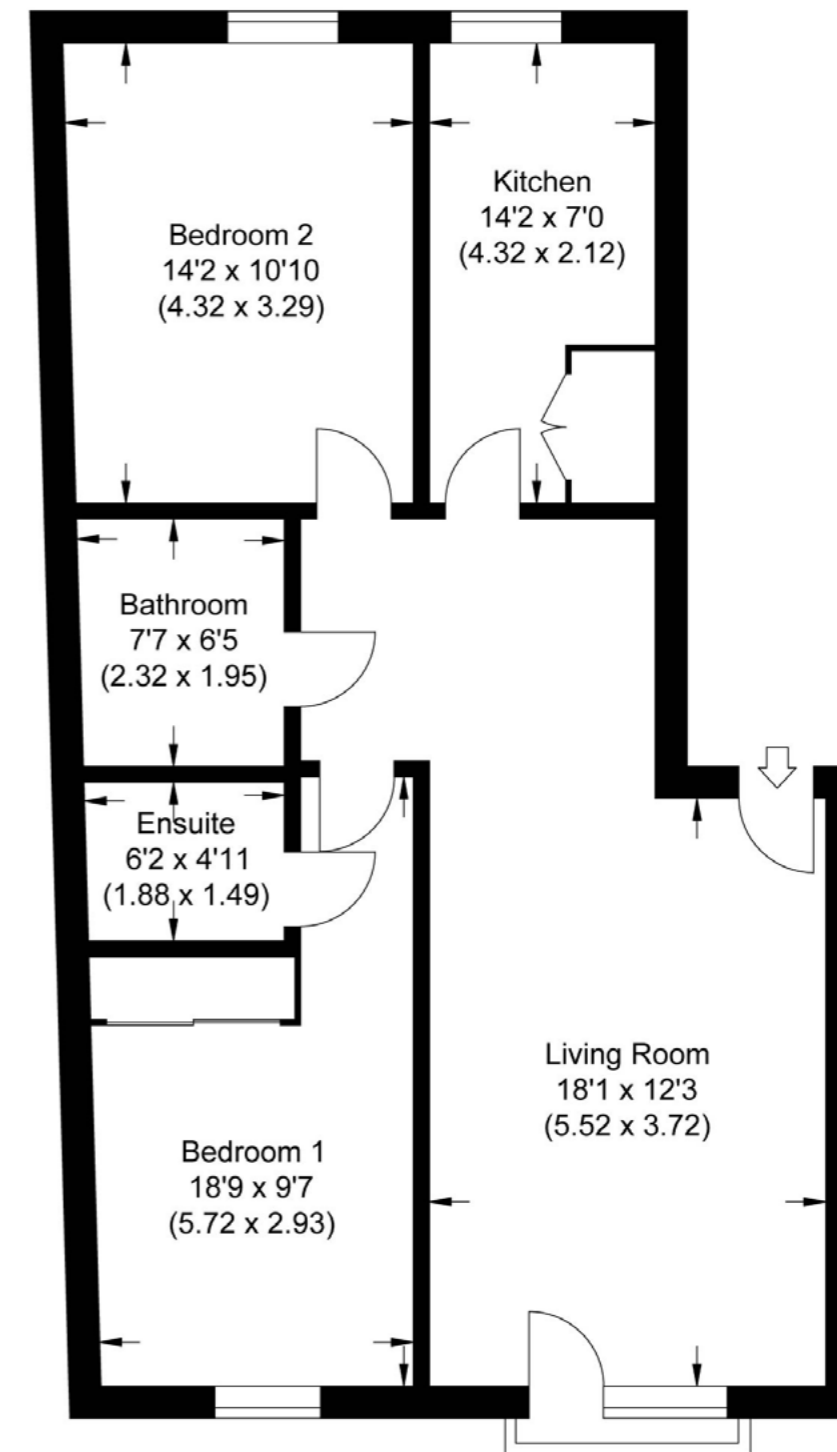
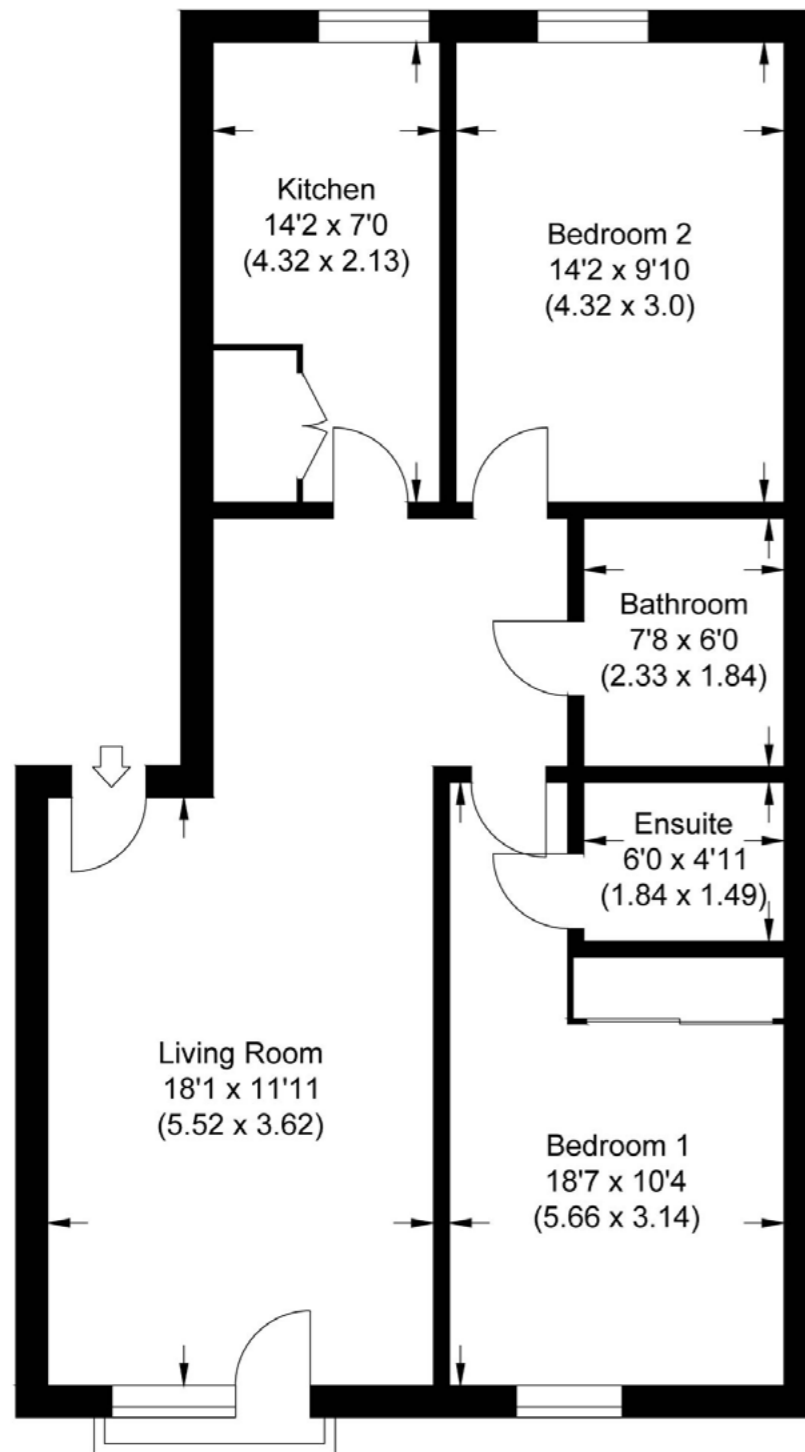
# The Beauley

A7 - third floor

[findahome.bromford.co.uk](http://findahome.bromford.co.uk)

[sales@bromford.co.uk](mailto:sales@bromford.co.uk)

0800 0852 499





# So what happens next?

## Step one

Find a Bromford Shared Ownership home and [make an enquiry](#).

## Step two

Check the local area connection.

## Step three

Carry out an initial affordability assessment with an independent financial advisor. You can choose one from our panel:

[The Mortgage People \(TMP\)](#)

[Mortgage Advice Bureau](#)

## Step four

If you are successful our sales team will be in touch with you regarding your application.

## For more information

The full process is detailed on:

[findahome.bromford.co.uk/  
shared-ownership](https://findahome.bromford.co.uk/shared-ownership)





For almost 60 years we have provided customers with new and affordable homes. We want all of our customers to thrive and believe that with the right homes and someone who believes in their potential, almost anything is possible - with shared ownership helping more people than ever before to realise their dreams of owning their home.



## Want to contact us?

Shannon Way,  
Ashchurch,  
Tewkesbury,  
GL20 8ND

0800 0852 499  
[sales@bromford.co.uk](mailto:sales@bromford.co.uk)  
[findahome.bromford.co.uk](http://findahome.bromford.co.uk)



# Bromford.

**CONSUMER  
CODE FOR  
HOME BUILDERS**  
[www.consumercode.co.uk](http://www.consumercode.co.uk)

**tsj**  
**APPROVED CODE  
TRADING STANDARDS.UK**

Bromford abides by the Consumer Protection from  
Unfair Trading Regulations 2008