

BURDON GREEN

BOGMA HALL FARM, COXHOE, DURHAM DH6 4EN



3 AND 4 BEDROOM HOMES



BARRATT
HOMES

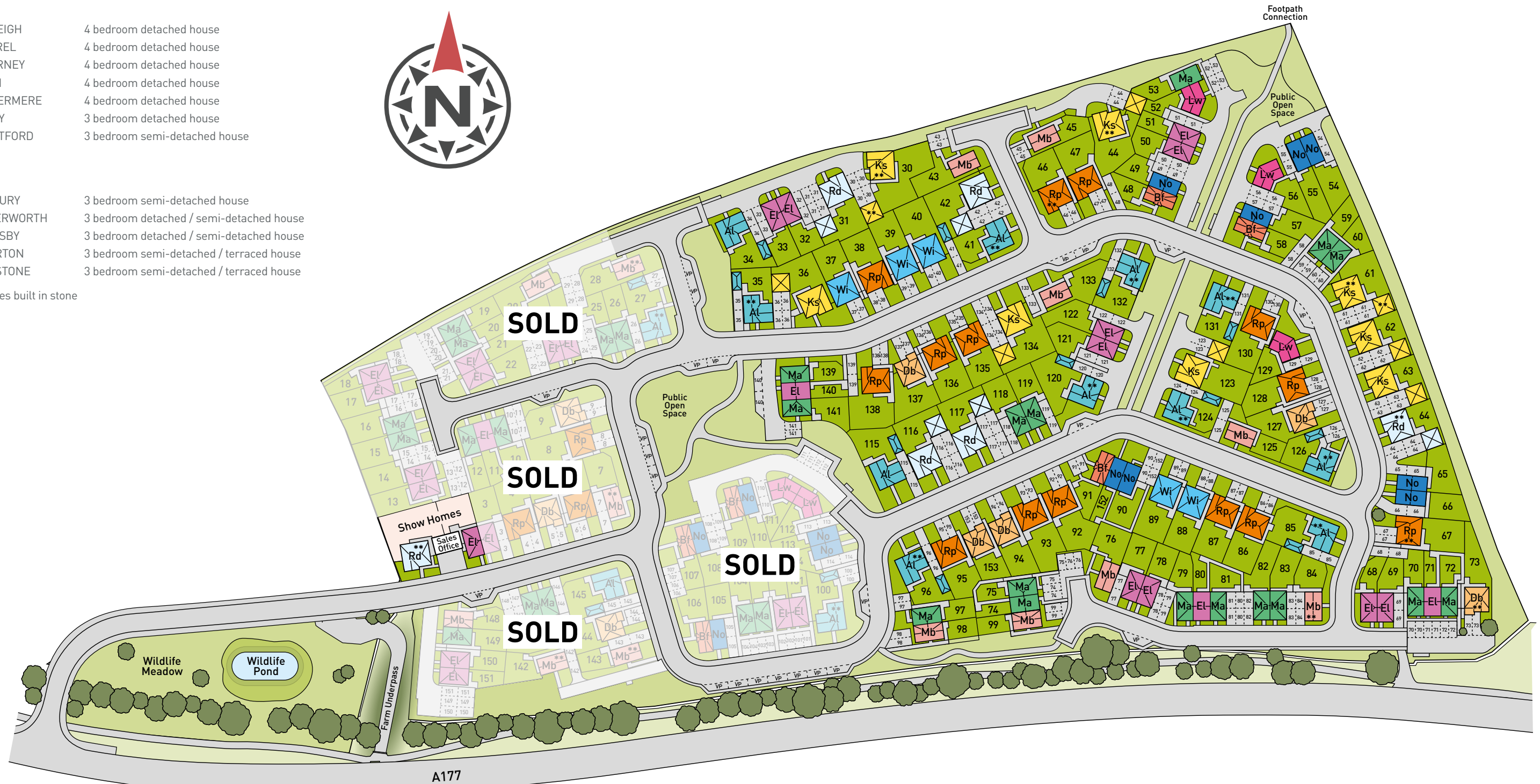
BURDON GREEN

DEVELOPMENT LAYOUT

- Rd RADLEIGH 4 bedroom detached house
- Ks KESTREL 4 bedroom detached house
- Al ALDERNEY 4 bedroom detached house
- Rp RIPON 4 bedroom detached house
- Wi WINDERMERE 4 bedroom detached house
- Db DENBY 3 bedroom detached house
- Bf BRENTFORD 3 bedroom semi-detached house

- No NORBURY 3 bedroom semi-detached house
- Lw LUTTERWORTH 3 bedroom detached / semi-detached house
- Mb MORESBY 3 bedroom detached / semi-detached house
- El ELLERTON 3 bedroom semi-detached / terraced house
- Ma MAIDSTONE 3 bedroom semi-detached / terraced house

** Properties built in stone

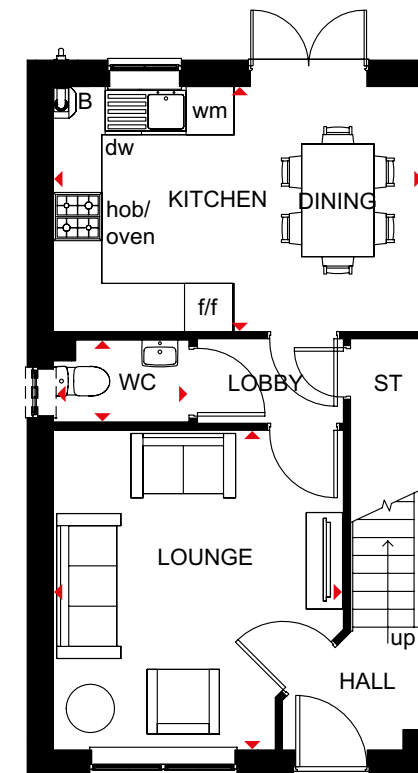


ELLERTON

3 BEDROOM TERRACED HOME



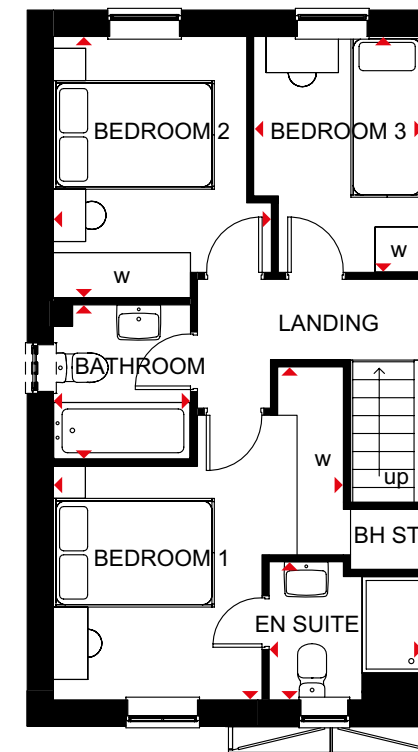
- Bright, practical home, ideal for modern family living
- Large, open-plan kitchen with ample dining space has French doors leading to the rear garden
- Good-sized lounge for all the family to relax in
- Upstairs, the main bedroom has an en suite shower room, and there is a further double bedroom, a single bedroom and a family bathroom



Ground Floor

Lounge	3605 x 3972mm	11'10" x 13'0"
Kitchen/Dining	4598 x 3048mm	15'1" x 10'0"
WC	1703 x 1050mm	5'7" x 3'5"

[Approximate dimensions]



First Floor

Bedroom 1	3605 x 4138mm	11'10" x 13'7"
En Suite	1918 x 1716mm	6'4" x 5'8"
Bedroom 2	2708 x 3250mm	8'11" x 10'8"
Bedroom 3	2109 x 2932mm	6'11" x 9'7"
Bathroom	1703 x 1917mm	5'7" x 6'3"

[Approximate dimensions]

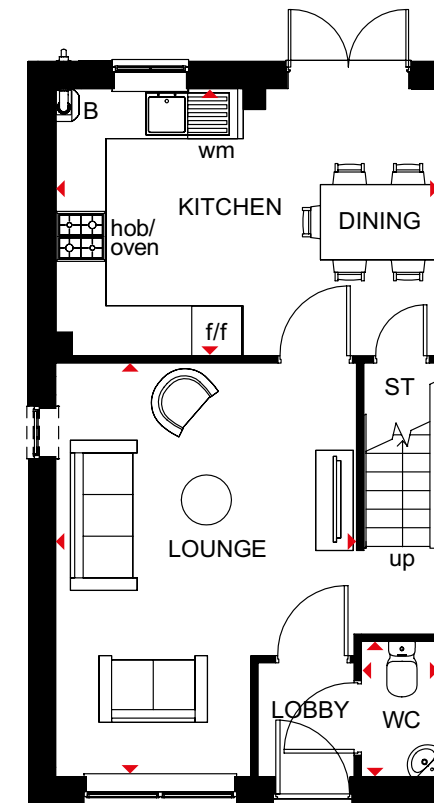
KEY	B	Boiler	wm	Washing machine space	w	Wardrobe space
	ST	Store	f/f	Fridge/freezer space	◀▶	Dimension location
	BH ST	Bulkhead store	dw	Dishwasher space		

MAIDSTONE

3 BEDROOM SEMI-DETACHED/TERRACED HOME



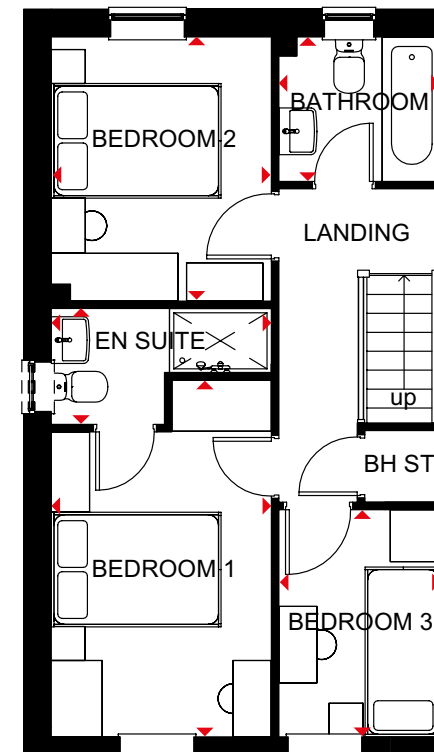
- An ideal family home designed with plenty of space for modern living
- The ground floor comprises a good-sized lounge and an open-plan kitchen with dining area and French doors leading to the garden
- The first floor has two double bedrooms – the generous main bedroom with en suite – a single bedroom and family bathroom



Ground Floor

Lounge	4598 x 4955mm	15'1" x 16'3"
Kitchen/Dining	4598 x 3202mm	15'1" x 10'6"
WC	935 x 1620mm	3'1" x 5'4"

[Approximate dimensions]



First Floor

Bedroom 1	2592 x 4204mm	8'6" x 13'10"
En Suite	2592 x 1365mm	8'6" x 4'6"
Bedroom 2	2592 x 3112mm	8'6" x 10'3"
Bedroom 3	1918 x 2676mm	6'4" x 8'9"
Bathroom	1918 x 1702mm	6'4" x 5'7"

[Approximate dimensions]

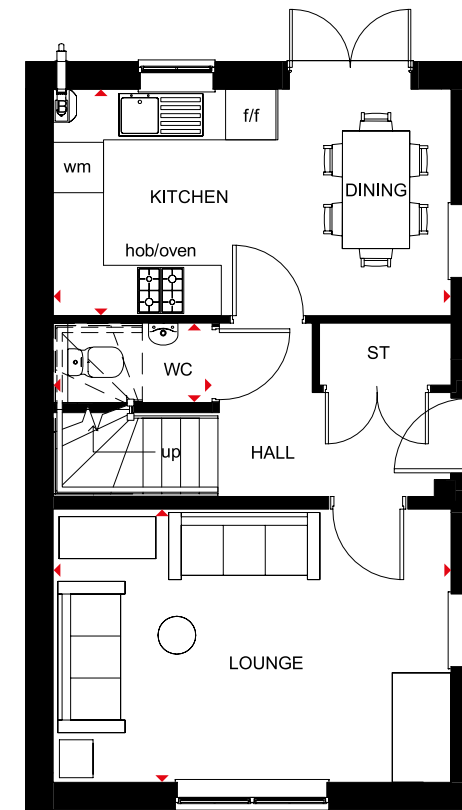
KEY	B	Boiler	wm	Washing machine space
	ST	Store	f/f	Fridge/freezer space
	BH ST	Bulhead store	◀▶	Dimension location

MORESBY

3 BEDROOM DETACHED/SEMI-DETACHED HOME



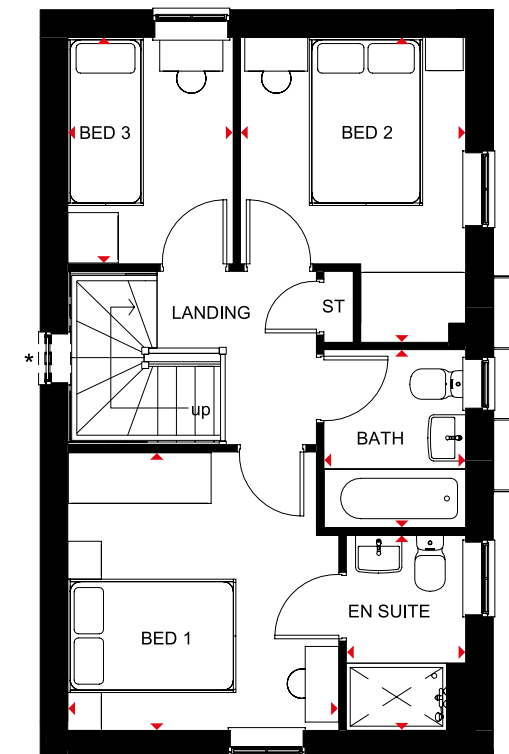
- A bright family home full of light and plenty of space
- The ground floor comprises a dual-aspect lounge and an open-plan kitchen with dining area opening onto the garden
- The first floor accommodates two double bedrooms, the main bedroom with en suite, a single bedroom and family bathroom



Ground Floor

Lounge	4735 x 3250mm	15'6" x 10'8"
Kitchen/Dining	4735 x 2933mm	15'6" x 9'7"
WC	1891 x 945mm	6'2" x 3'1"

(Approximate dimensions)



First Floor

Bedroom 1	3226 x 3312mm	10'7" x 10'10"
En Suite	2322 x 1421mm	7'7" x 4'8"
Bedroom 2	2679 x 3628mm	8'9" x 11'11"
Bedroom 3	2696 x 1968mm	8'10" x 6'5"
Bathroom	2120 x 1688mm	6'11" x 5'6"

(Approximate dimensions)

* Window may be omitted on certain plots. Speak to a Sales Adviser for details on individual plots.

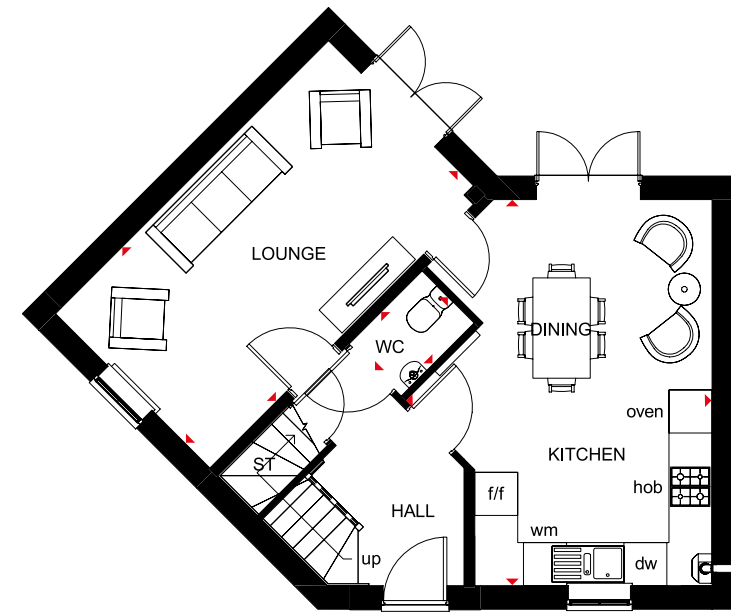
KEY	B	Boiler	f/f	Fridge/freezer space
	ST	Store	◀▶	Dimension location
	wm	Washing machine space		

LUTTERWORTH

3 BEDROOM DETACHED HOME



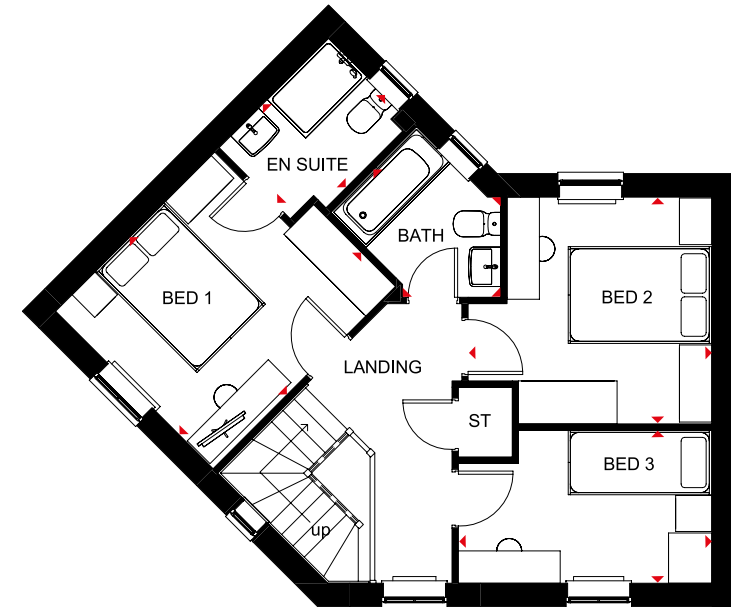
- Great use of a corner plot to create a spacious home
- Bright and flexible areas to enjoy modern-day living
- French doors open onto the rear garden from both the dual-aspect lounge and the open-plan kitchen with dining area
- Galleried landing leads to two double bedrooms – the main with en suite – a single bedroom and the family bathroom



Ground Floor

Lounge	5385 x 3045mm	17'8" x 10'0"
Kitchen/Dining	4274 x 5385mm	14'0" x 17'8"
WC	1028 x 1441mm	3'4" x 4'9"

[Approximate dimensions]



First Floor

Bedroom 1	3107 x 3599mm	10'2" x 11'10"
En Suite	1648 x 2159mm	5'5" x 7'1"
Bedroom 2	3404 x 3163mm	11'2" x 10'5"
Bedroom 3	3540 x 2134mm	11'7" x 7'0"
Bathroom	2519 x 1958mm	8'3" x 6'5"

[Approximate dimensions]

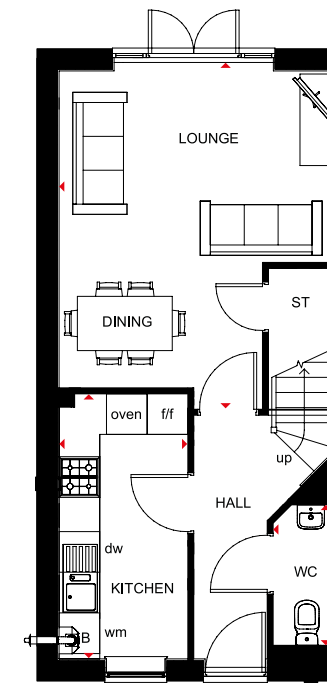
KEY	ST	Store	dw	Dishwasher space
	wm	Washing machine space	◀▶	Dimension location
	f/f	Fridge/freezer space		

NORBURY

3 BEDROOM HOME



- Bright and spacious family home, designed over three floors
- Open-plan lounge with dining area leading to the rear garden through French doors
- Front-aspect, stylish fitted kitchen
- Two double bedrooms and a family bathroom on the first floor
- Large master bedroom with en suite and dressing area takes up the entire top floor

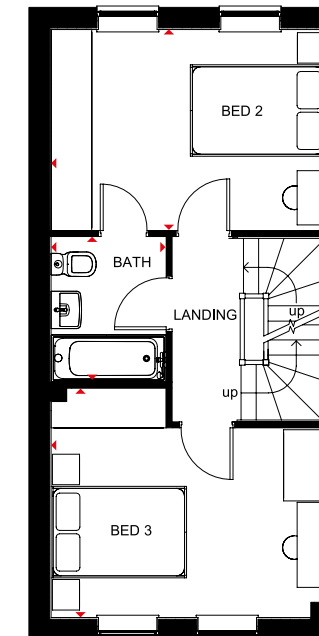


Ground Floor

Lounge/Dining	4056 x 4991mm	13'4" x 16'4"
Kitchen	3910 x 1900mm	12'10" x 6'3"
WC	897 x 2272mm	2'11" x 7'5"

[Approximate dimensions]

* Window may be omitted on certain plots. Speak to a Sales Adviser for details on individual plots.

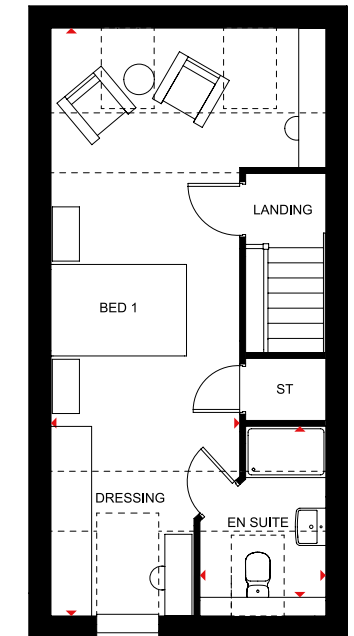


First Floor

Bedroom 2	2965 x 4056mm	9'9" x 13'4"
Bedroom 3	3386 x 4056mm	11'1" x 13'4"
Bathroom	2146 x 1698mm	7'0" x 5'7"

[Approximate dimensions]

* Window may be omitted on certain plots. Speak to a Sales Adviser for details on individual plots.



Second Floor

Bedroom 1/ Dressing	4056 x 8673mm	13'3" x 28'5"
En Suite	1857 x 3101mm	6'1" x 10'2"

[Approximate dimensions]

*Overall floor dimension includes lower ceiling areas.

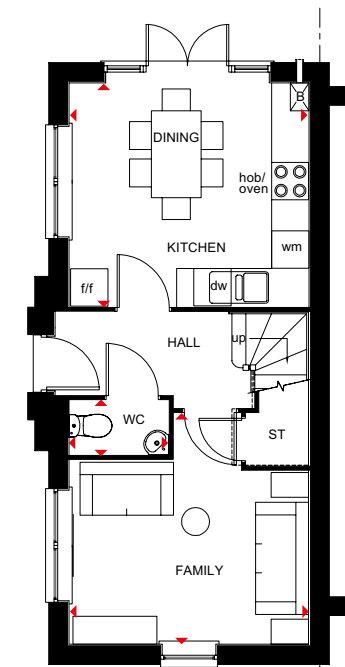
KEY	B	Boiler	f/f	Fridge/freezer space
	ST	Store	dw	Dishwasher space
	wm	Washing machine space	◀▶	Dimension location

BRENTFORD

3 BEDROOM HOME



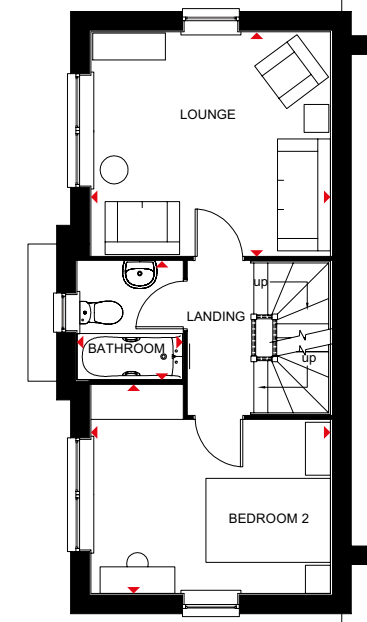
- Bright family home designed over three storeys
- Open-plan kitchen with dining area and French doors to the garden, and a separate family room are on the ground floor
- The first floor has a dual-aspect lounge, one double bedroom and the family bathroom
- Two double bedrooms, the main bedroom with dual-access en suite, are on the top floor



Ground Floor

Kitchen/Dining	3860 x 3597mm	12'8" x 11'10"
Family Room	3860 x 3702mm	12'8" x 12'2"
WC	1601 x 887mm	5'3" x 2'11"

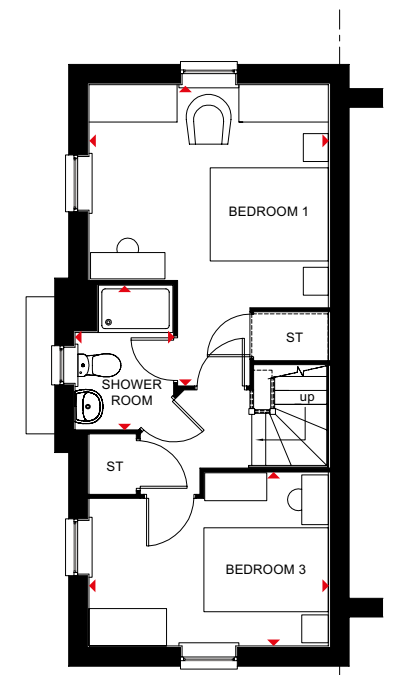
[Approximate dimensions]



First Floor

Lounge	3860 x 3597mm	12'8" x 11'10"
Bedroom 2	3860 x 3313mm	12'8" x 10'10"
Bathroom	1867 x 1701mm	6'2" x 5'7"

[Approximate dimensions]



Second Floor

Bedroom 1	4832 x 3860mm	15'10" x 12'8"
Bedroom 3	3860 x 2800mm	12'8" x 9'2"
Shower Room	2315 x 1576mm	7'7" x 5'2"

[Approximate dimensions]

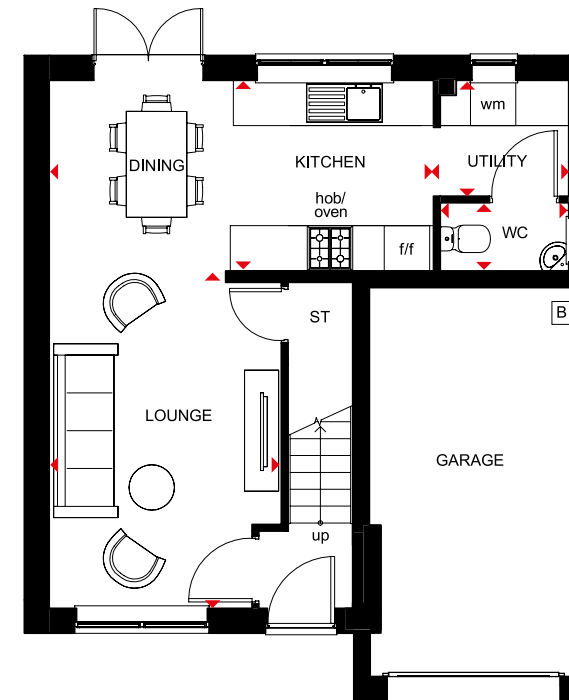
KEY B Boiler
ST Store
wm Washing machine space

f/f Fridge/freezer space
dw Dishwasher space
◀▶ Dimension location

3 BEDROOM DETACHED HOME



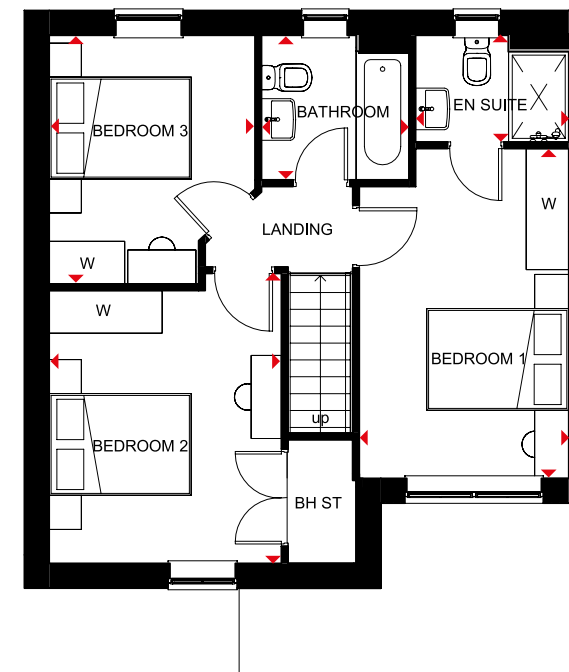
- Free-flowing living space creates a flexible family home
- Large windows and French doors to the rear garden give the open-plan lounge, dining area, kitchen and utility a bright and airy feeling
- Integral garage adds convenience and security
- Upstairs are three double bedrooms – the main bedroom with en suite – and the family bathroom



Ground Floor

Lounge	3072 x 4462mm	10'1" x 14'8"
Kitchen/Dining	5085 x 2523mm	16'8" x 8'3"
Utility	1789 x 1533mm	5'10" x 5'0"
WC	1701 x 903mm	5'7" x 3'0"

[Approximate dimensions]



First Floor

Bedroom 1	2770 x 4361mm	9'1" x 14'4"
En Suite	2026 x 1412mm	6'8" x 4'8"
Bedroom 2	3072 x 3834mm	10'1" x 12'7"
Bedroom 3	2722 x 3289mm	8'11" x 10'9"
Bathroom	1950 x 1913mm	6'5" x 6'3"

[Approximate dimensions]

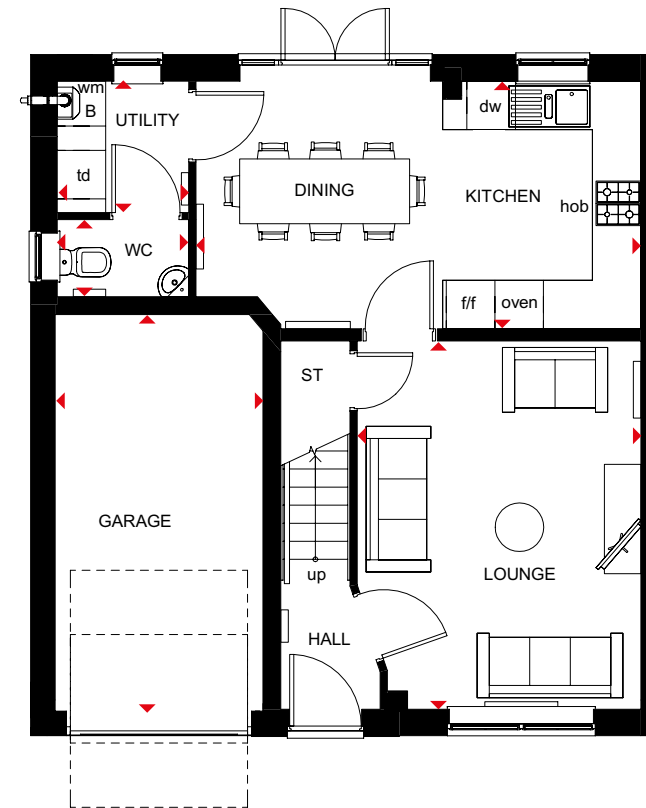
KEY	B	Boiler	f/f	Fridge/freezer space
	ST	Store	w	Wardrobe
	wm	Washing machine space	◀▶	Dimension location

WINDERMERE

4 BEDROOM DETACHED HOME



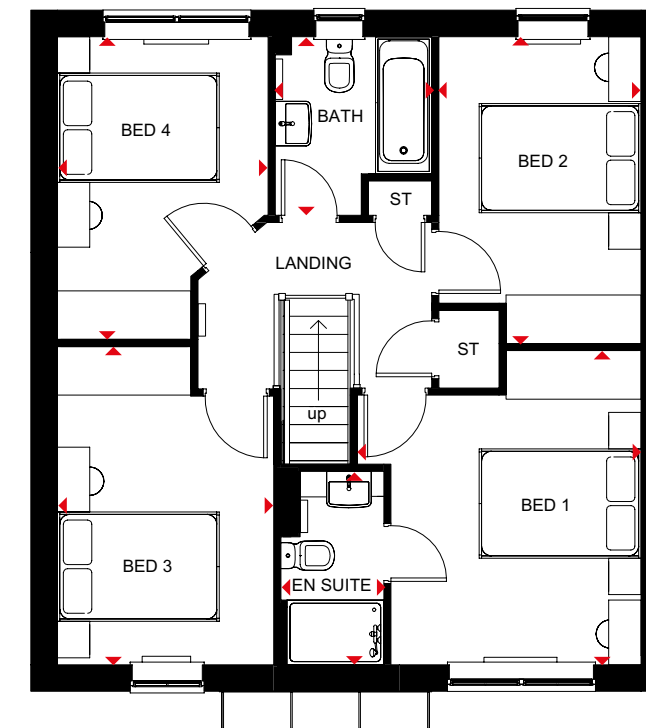
- Light flows into this bright, airy family home through oversized windows, giving a feeling of spaciousness
- The large open-plan kitchen is ideal for modern living with a dining area that has French doors leading to the garden, and a separate utility room
- A spacious lounge is the perfect place for all the family to relax in
- Upstairs are four double bedrooms, the main with en suite, and a family bathroom



Ground Floor

Lounge	3506 x 4548mm	11'6" x 14'11"
Kitchen/Dining	5497 x 3060mm	18'0" x 10'0"
Utility	1627 x 1623mm	5'4" x 5'4"
WC	1627 x 952mm	5'4" x 3'1"
Garage	2568 x 4900mm	8'5" x 16'1"

[Approximate dimensions]



First Floor

Bedroom 1	3506 x 3881mm	11'6" x 12'9"
En Suite	1272 x 2390mm	4'2" x 7'10"
Bedroom 2	2498 x 3791mm	8'2" x 12'5"
Bedroom 3	2675 x 3931mm	8'9" x 12'11"
Bedroom 4	2604 x 3739mm	8'7" x 12'3"
Bathroom	1934 x 2208mm	6'4" x 7'3"

[Approximate dimensions]

KEY	B	Boiler	f/f	Fridge/freezer space	◀▶	Dimension location
	ST	Store	dw	Dishwasher space		
	wm	Washing machine space	td	Tumble dryer space		

RIPON

4 BEDROOM DETACHED HOME



- Bright and spacious four bedroom family home with oversized windows allowing light to flow through
- As well as a generous lounge, the open-plan kitchen with dining area provides room for all the family to enjoy. There is also a separate utility
- Upstairs are four double bedrooms, main with en suite, and a family bathroom



Ground Floor

Lounge	4898 x 3287mm	16'1" x 10'9"
Kitchen/Dining	5259 x 3151mm	17'3" x 10'4"
Utility	1700 x 1602mm	5'7" x 5'3"
WC	976 x 1602mm	3'2" x 5'3"
Garage	5189 x 2657mm	17'0" x 8'9"

[Approximate dimensions]



First Floor

Bedroom 1	4196 x 4068mm	13'9" x 13'4"
En Suite	2011 x 1661mm	6'7" x 5'5"
Bedroom 2	3174 x 3504mm	10'5" x 11'6"
Bedroom 3	2764 x 3774mm	9'1" x 12'5"
Bedroom 4	2888 x 3123mm	9'6" x 10'3"
Bathroom	2046 x 1899mm	6'9" x 6'3"

[Approximate dimensions]

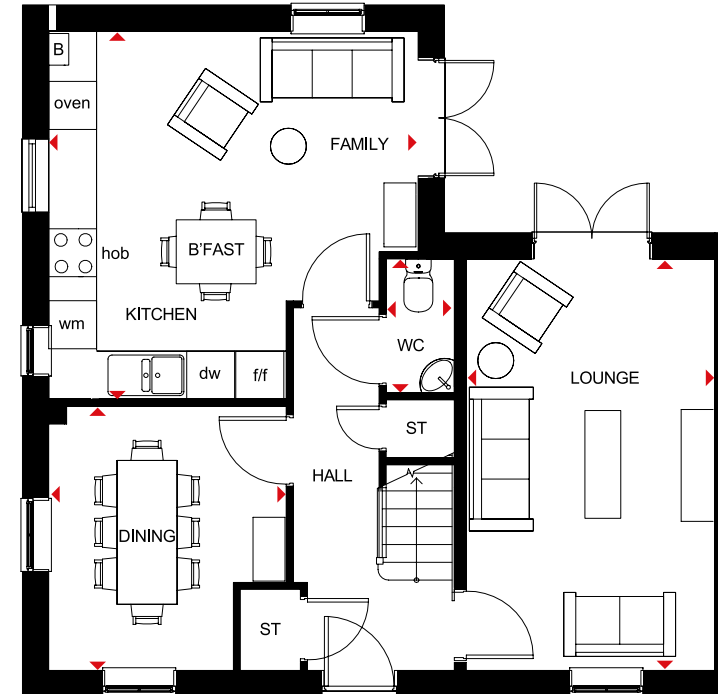
KEY	B Boiler	f/f Fridge/freezer space	◀▶ Dimension location
	ST Store	dw Dishwasher space	
	wm Washing machine space	td Tumble dryer space	

ALDERNEY

4 BEDROOM DETACHED HOME



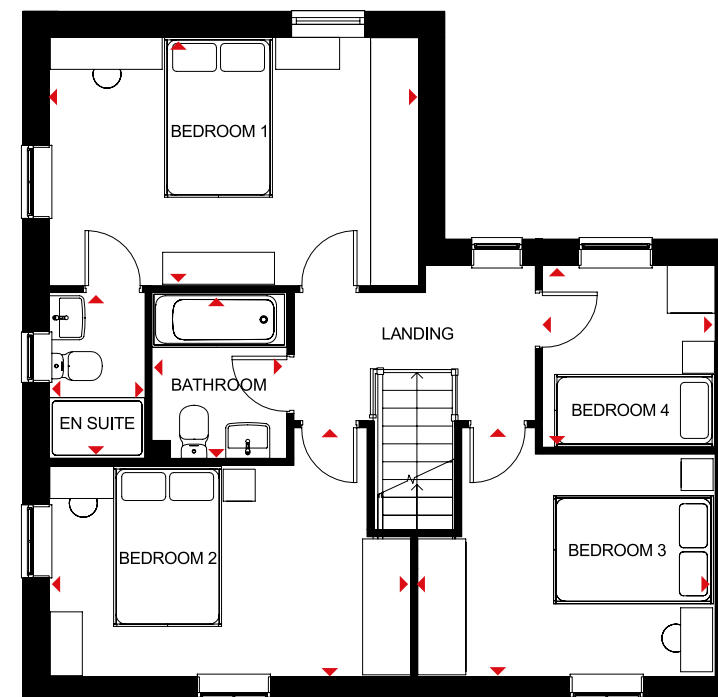
- A large fitted kitchen with family and breakfast areas provides this spacious home with the ideal hub for all the family
- French doors leading to the rear garden from both the kitchen and the separate lounge give it a bright and airy feeling, and there is a separate dual-aspect dining room
- Upstairs are three double bedrooms, the main bedroom with en suite, a single bedroom and a family bathroom



Ground Floor

Lounge	5148 x 3110mm	16'11" x 10'2"
Kitchen/Family/Breakfast	4623 x 4603mm	15'2" x 15'1"
Dining	3307 x 2972mm	10'10" x 9'9"
WC	1675 x 853mm	5'6" x 2'10"

[Approximate dimensions]



First Floor

Bedroom 1	4623 x 3104mm	15'2" x 10'2"
En Suite	2075 x 1191mm	6'10" x 3'11"
Bedroom 2	4523 x 3115mm	14'10" x 10'3"
Bedroom 3	3724 x 3115mm	12'3" x 10'3"
Bedroom 4	2275 x 2163mm	7'6" x 7'1"
Bathroom	2075 x 1702mm	6'10" x 5'7"

[Approximate dimensions]

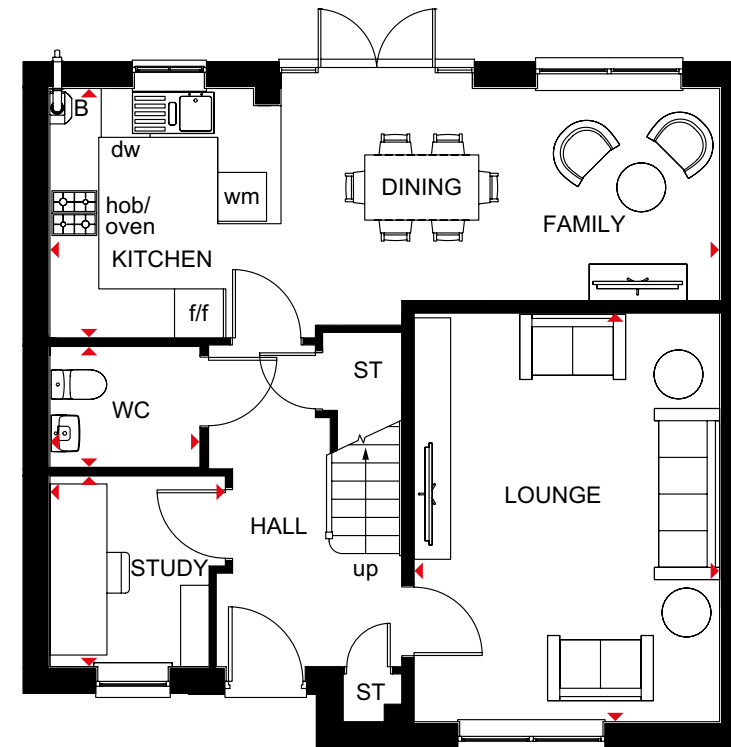
KEY	B	Boiler	f/f	Fridge/freezer space
	ST	Store	dw	Dishwasher space
	wm	Washing machine space	◀▶	Dimension location

KESTREL

4 BEDROOM DETACHED HOME



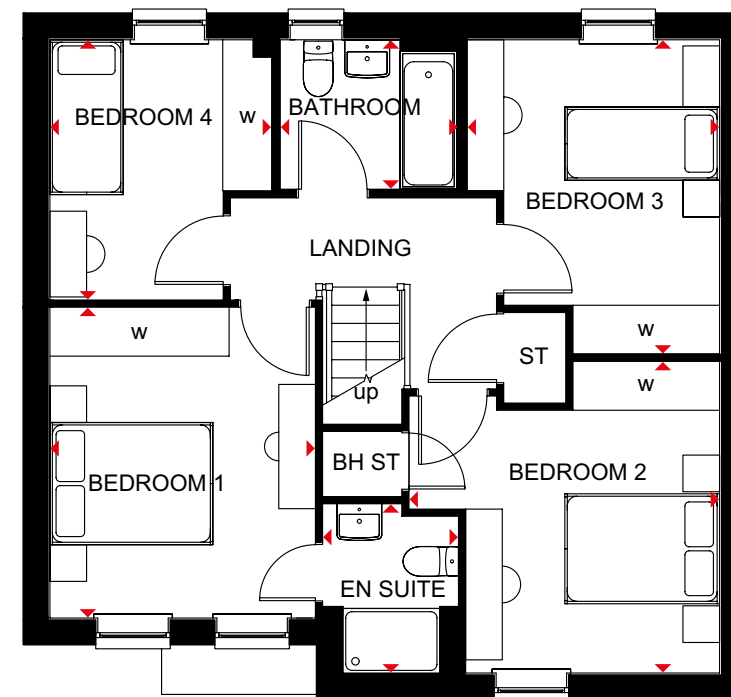
- A bright and airy family home
- The open-plan kitchen dining and family room features French doors leading to the garden
- A spacious lounge, separate study and WC are also on the ground floor
- Upstairs are two double bedrooms, the main bedroom with en suite, two further single bedrooms and a family bathroom



Ground Floor

Lounge	5018 x 3753mm	16'6" x 12'4"
Kitchen/ Family/Dining	3061 x 8223mm	10'1" x 27'0"
Study	2341 x 1955mm	7'8" x 6'5"
WC	1484 x 1842mm	4'10" x 6'1"

[Approximate dimensions]



First Floor

Bedroom 1	3815 x 3260mm	12'6" x 10'8"
En Suite	2075 x 1668mm	6'10" x 5'6"
Bedroom 2	3825 x 3814mm	12'7" x 12'6"
Bedroom 3	3809 x 3100mm	12'6" x 10'2"
Bedroom 4	3194 x 2722mm	10'6" x 8'11"
Bathroom	1834 x 2184mm	6'0" x 7'2"

[Approximate dimensions]

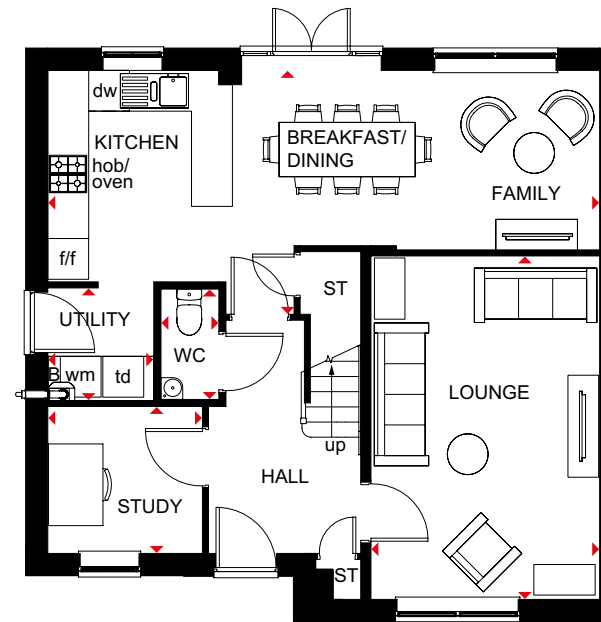
KEY	B Boiler	wm Washing machine space	w Wardrobe space
	ST Store	f/f Fridge/freezer space	◀▶ Dimension location
	BH ST Bulkhead store	dw Dishwasher space	

RADLEIGH

4 BEDROOM DETACHED HOME



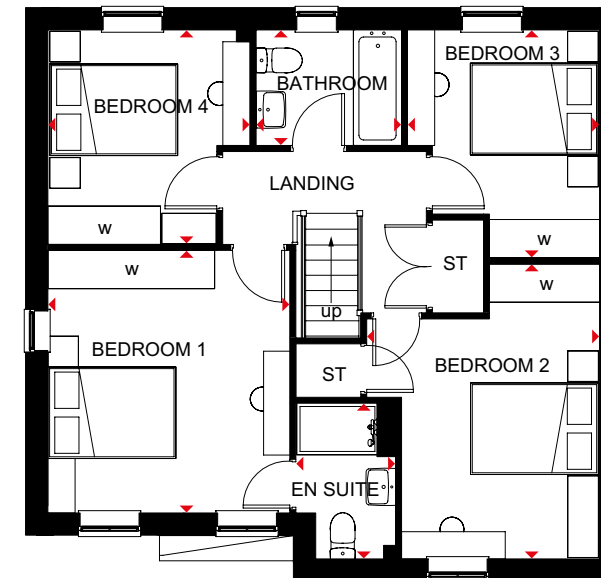
- A bright and airy family home
- The large open-plan kitchen has dining and family areas and French doors leading to the garden. There is also a separate utility room
- A spacious lounge and separate study are also on the ground floor
- Upstairs are four double bedrooms, the main bedroom with en suite shower room, and a family bathroom



Ground Floor

Lounge	3361 x 5046mm	11'0" x 16'7"
Kitchen/ Dining/Family	8110 x 3583mm	26'7" x 11'9"
Utility	1558 x 1655mm	5'1" x 5'5"
Study	2273 x 2158mm	7'5" x 7'1"
WC	884 x 1655mm	2'11" x 5'5"

[Approximate dimensions]



First Floor

Bedroom 1	3570 x 3858mm	11'9" x 12'8"
En Suite	1452 x 2289mm	4'9" x 7'6"
Bedroom 2	3423 x 4335mm	11'3" x 14'3"
Bedroom 3	2824 x 3350mm	9'3" x 11'0"
Bedroom 4	2973 x 3152mm	9'9" x 10'4"
Bathroom	2137 x 1699mm	7'0" x 5'7"

[Approximate dimensions]

KEY	B	Boiler	f/f	Fridge/freezer space	w	Wardrobe space
	ST	Store	dw	Dishwasher space	◀▶	Dimension location
	wm	Washing machine space	td	Tumble dryer space		

CUSTOMER SERVICE BY BARRATT HOMES

BUILDING OUR CUSTOMER SERVICE TO BE THE BEST

At Barratt we are genuinely committed to delivering the highest standards of customer service. The same exacting standards that have helped us win more quality awards than any other major housebuilder also ensure we look after our customers as well as we possibly can.

We believe that solid foundations are as important to a customer relationship as they are to a building. During the planning and design process we go to great lengths to make sure the homes and developments we build are perfectly in tune with the needs and aspirations of their prospective owners.

Our Directors carry out weekly site inspections before, during and after the build process. As your home is built, it is checked at every stage to ensure it reaches the exacting standards we demand.

Our Customer Service Charter lays out our commitments to you and details the care, support and assistance we'll provide you with throughout your purchase and long after you've moved in.

As a result of the outstanding service we provide to our customers, we have been awarded the exceptional accreditation of "5 Star Builder" by the independent Home Builders Federation. 29,000 home buyers across the country took part in the survey and this honour recognises the highest levels of positive recommendation by our customers, as well as the superior build quality of our homes.



5 GREAT REASONS TO BUY WITH BARRATT

1. 5 Stars for Customer Satisfaction

No other major national housebuilder** has been awarded a Home Builders Federation 5 Star Housebuilder accolade every year since 2010. All thanks to positive recommendations by our customers.

2. Building homes for over 5 decades

We've been established for over 5 decades and in that time have built over 300,000 new homes. Our commitment to quality and innovation is shown in the highest standards of design, construction, finish and the customer service we provide.

3. Award winners, time and time again

Our steadfast commitment to quality has ensured that for the tenth year in a row our site managers have picked up more awards than any other housebuilder, winning NHBC Pride in the Job awards for their workmanship and demonstrating our dedication and commitment to building homes of the very highest standard.

4. Creating places where you'll love to live both inside and out

Our light, open-plan properties are really adaptable – every room can suit a variety of lifestyles. Whether you want space for the kids to play or more room to entertain friends, our fantastic range of homes can give you that flexibility.

We also know our customers love green open spaces and we go to great lengths to maintain and enhance the local environment on our developments. In fact, we plant an average of 20 shrubs or trees for each home we build, creating a beautiful and sustainable environment to live in.

5. Our energy efficient homes could save you money

Every home we build is sustainable and energy efficient – minimising their impact on the environment, whilst reducing your energy costs too. Our homes could save you money by being 45% to 55% more energy efficient than a same sized older home – even after it's been modernised. As a result, you could save a staggering £1,312*** per year on your energy bill.

Find out more, talk to one of our Sales Advisers today.



Images may include optional upgrades at additional cost. All information in this document is correct to the best of our knowledge at the time of going to print. Burdon Green is a marketing name only and may not be the designated postal address, which may be determined by The Post Office. *We refers to the Barratt Developments PLC group brands. **We are the only major national housebuilder to be awarded this [key industry] award 10 years running. *Terms, conditions and exclusions apply. See website or local sales centre for details. See our website or speak to one of our Sales Advisers for details. First 2 years covered by Builder Warranty or similar. Years 3-10 covered by NHBC Insurance or similar. Available on virtually all of our developments. Your statutory rights are unaffected. **Refers to the Barratt Developments PLC Group brands. ***Costs based upon the comparison of a new build four-bed detached house built to 2010 regulations vs. Victorian property (upgraded with modern-day improvements). An upgraded Victorian home means one which has the following improvements over original build specification: 200mm loft insulation, double glazing to half of all windows, a 72% efficient (non-condensing) gas boiler and insulated hot water cylinder. Source: Zero Carbon Hub and NHBC Foundation 2012.

NEW HOMES QUALITY CODE

Housebuilders and developers who build new homes will be expected to register with the New Homes Quality Board (NHQB). As long as a housebuilder or developer has followed the correct registration process, including completing the necessary training, introducing a complaints procedure, and following other processes and procedures that are needed to meet the requirements of this New Homes Quality Code (the code), they will become a registered developer.

Registered developers agree to follow the code and the New Homes Ombudsman Service, including accepting the decisions of the New Homes Ombudsman in relation to dealings with customers. If a registered developer does not meet the required standards, or fails to accept and act in line with the decisions of the New Homes Ombudsman, they may have action taken against them, including being removed from the register of registered developers.

The code sets out the requirements that registered developers must meet. The code may be updated from time to time to reflect changes to industry best practice as well as the decisions of the New Homes Ombudsman Service.

All homes built by registered developers must meet building-safety and other regulations. All registered developers should aim to make sure there are no snags or defects in their properties before the keys are handed over to a customer. If there are any snags or defects, these should be put right within the agreed timescales.

WHAT THE CODE COVERS

For the purposes of this code, 'customer' means a person who is buying or intends to buy a new home which they will live in or give to another person. (If a new home is being bought in joint names, 'the customer' includes all the joint customers.) However, the New Homes Quality Board have also started work to consider other groups of customers and what they should be able to expect from a new home. This includes shared owners and people who are buying a new home to let to other people. Any changes the New Homes Quality Board make to the code to reflect the needs of other groups of customers will be developed through consultation, and they will continually assess and review the effectiveness of the code, and any new laws or regulations that apply. Other areas which are not covered by the code are claims for loss of property value or blight (where a property falls in value or becomes difficult to sell because of major public work in the area), personal injury or claims that are not covered by the scheme rules of the New Homes Ombudsman Service.



barratthomes.co.uk

0333 355 8470



Calls to 03 numbers are charged at the same rate as dialling an 01 or 02 number. If your fixed line or mobile service has inclusive minutes to 01/02 numbers, then calls to 03 are counted as part of this inclusive call volume. Non-BT customers and mobile phone users should contact their service providers for information about the cost of calls.