

THE TOWNHOUSE & HOUSE  
COLLECTION

THE SCENE

DEPTFORD. SE14

3 and 4 Bedroom Homes:  
Amersham Vale and Wycombe Street















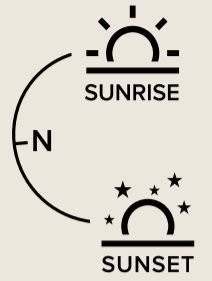






# No 119

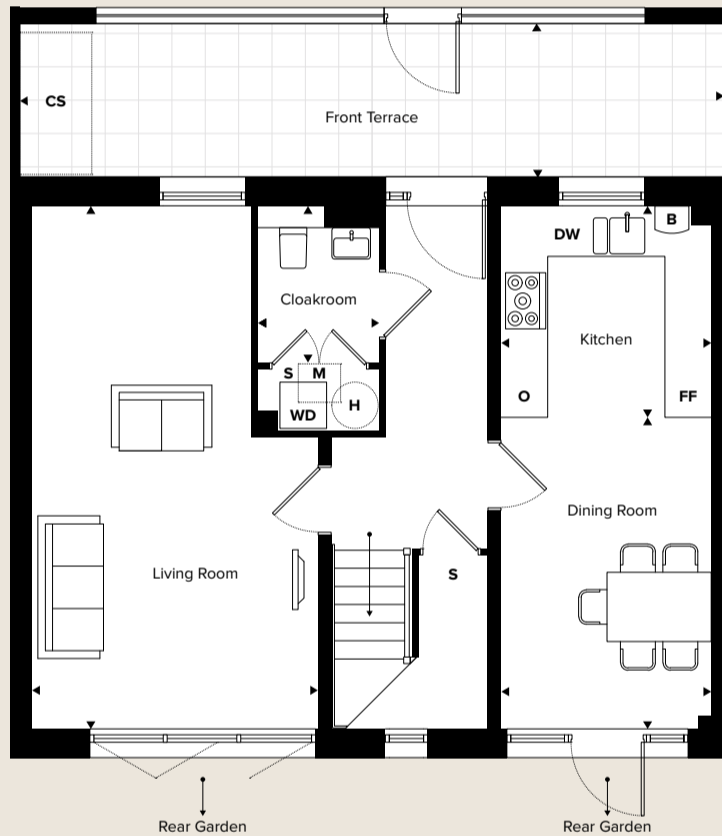
Amersham Vale



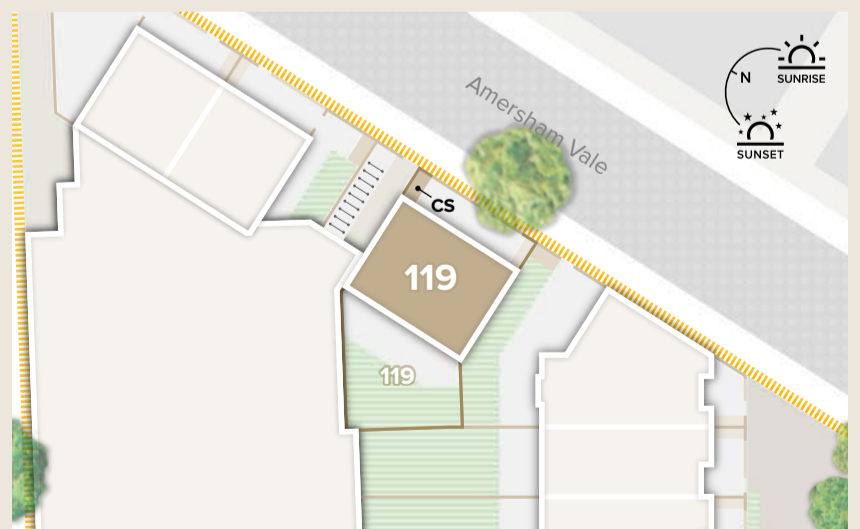
First Floor



Ground Floor



DIMENSIONS	Metric	Imperial
<b>Gross Internal Area</b>	<b>119.3m<sup>2</sup></b>	<b>1284ft<sup>2</sup></b>
Living Room	6.68 x 3.70	21'9" x 12'1"
Kitchen	2.74 x 2.72	9'0" x 8'9"
Dining Room	4.04 x 2.72	13'2" x 8'9"
Master Bedroom	4.48 x 2.72	14'7" x 8'9"
En-Suite	2.71 x 1.52	8'8" x 4'9"
Bedroom 2	3.96 x 3.70	12'9" x 12'1"
Bedroom 3	3.70 x 2.74	12'1" x 8'9"
Bathroom	2.20 x 2.01	7'2" x 6'5"
Cloakroom	2.03 x 1.57	6'6" x 5'1"
Utility Room	1.57 x 0.80	5'1" x 2'6"



DIMENSIONS	Metric	Imperial
<b>Gross Private Amenity Area</b>	<b>76.3m<sup>2</sup></b>	<b>821.3ft<sup>2</sup></b>
Rear Garden	8.07 x 7.15	26'4" x 23'4"
Front Terrace	9.12 x 2.00	29'9" x 6'5"

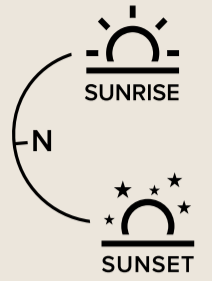
**FLOORPLAN KEY**

WD Washer/Dryer DW Dishwasher FF Fridge Freezer O Oven S Storage W Wardrobe H Hot Water Cylinder B Boiler M Mechanical Ventilation/Heat Recovery CS Cycle Store



# No 117

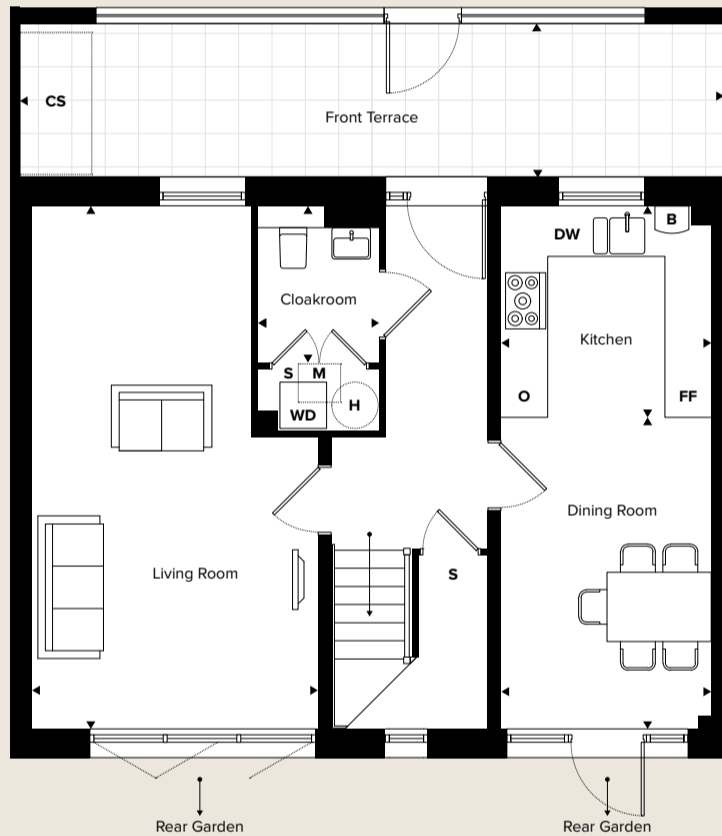
Amersham Vale



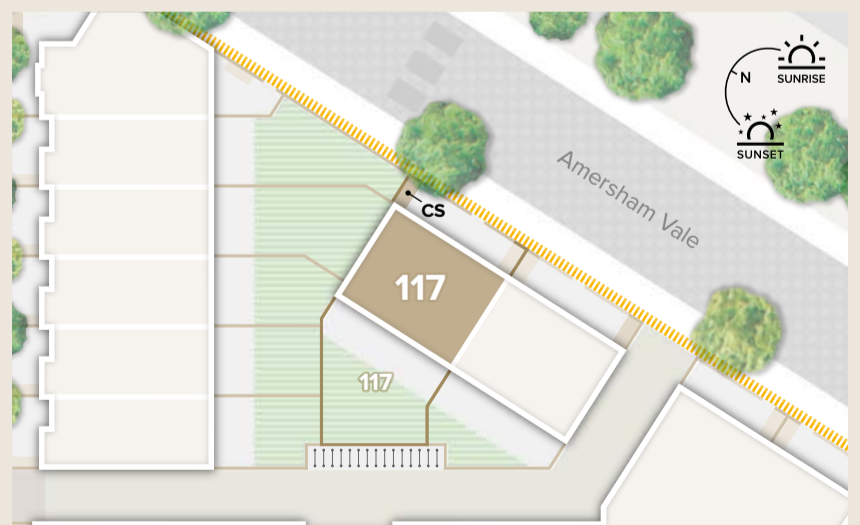
First Floor



Ground Floor



DIMENSIONS	Metric	Imperial
<b>Gross Internal Area</b>	<b>119.3m<sup>2</sup></b>	<b>1284ft<sup>2</sup></b>
Living Room	6.68 x 3.70	21'9" x 12'1"
Kitchen	2.74 x 2.72	9'0" x 8'9"
Dining Room	4.04 x 2.72	13'2" x 8'9"
Master Bedroom	4.48 x 2.72	14'7" x 8'9"
En-Suite	2.71 x 1.52	8'8" x 4'9"
Bedroom 2	3.96 x 3.70	12'9" x 12'1"
Bedroom 3	3.70 x 2.74	12'1" x 8'9"
Bathroom	2.20 x 2.01	7'2" x 6'5"
Cloakroom	2.03 x 1.57	6'6" x 5'1"
Utility Room	1.57 x 0.80	5'1" x 2'6"



DIMENSIONS	Metric	Imperial
<b>Gross Private Amenity Area</b>	<b>90.6m<sup>2</sup></b>	<b>975.2ft<sup>2</sup></b>
Rear Garden	9.95 x 7.14	32'6" x 23'4"
Front Terrace	9.10 x 2.02	29'8" x 6'6"

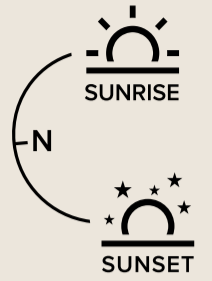
**FLOORPLAN KEY**

WD Washer/Dryer DW Dishwasher FF Fridge Freezer O Oven S Storage W Wardrobe H Hot Water Cylinder B Boiler M Mechanical Ventilation/Heat Recovery CS Cycle Store



# No 115

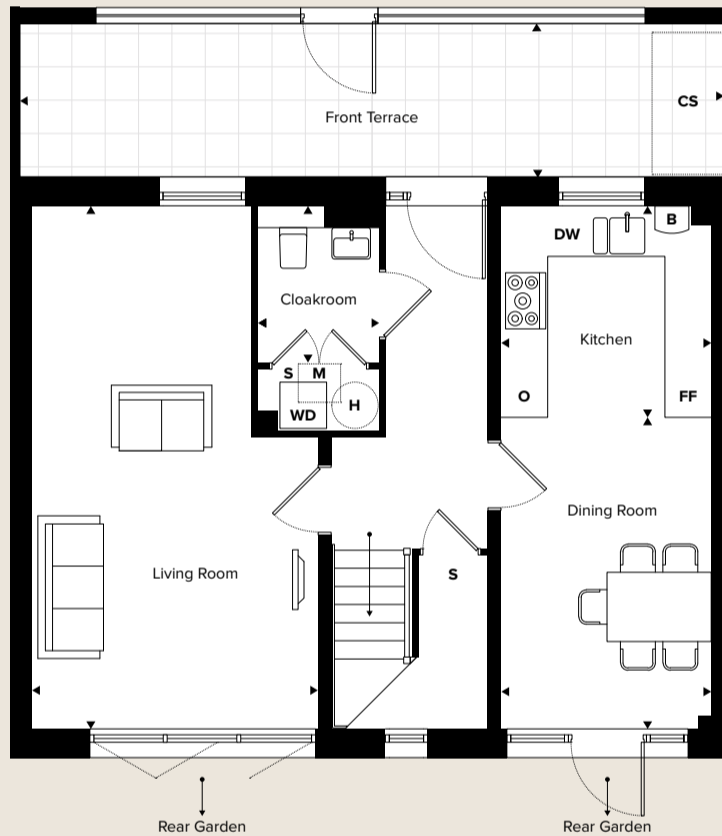
Amersham Vale



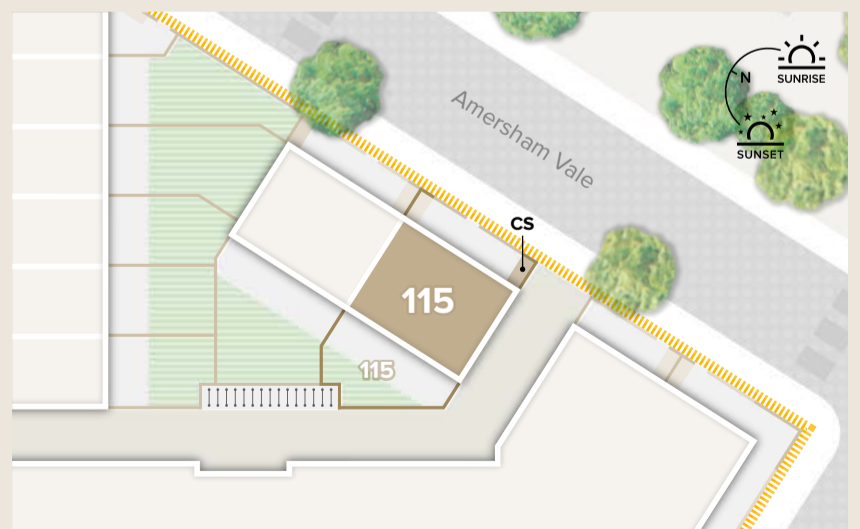
First Floor



Ground Floor



DIMENSIONS	Metric	Imperial
<b>Gross Internal Area</b>	<b>119.3m<sup>2</sup></b>	<b>1284ft<sup>2</sup></b>
Living Room	6.68 x 3.70	21'9" x 12'1"
Kitchen	2.74 x 2.72	9'0" x 8'9"
Dining Room	4.04 x 2.72	13'2" x 8'9"
Master Bedroom	4.48 x 2.72	14'7" x 8'9"
En-Suite	2.71 x 1.52	8'8" x 4'9"
Bedroom 2	3.96 x 3.70	12'9" x 12'1"
Bedroom 3	3.70 x 2.74	12'1" x 8'9"
Bathroom	2.20 x 2.01	7'2" x 6'5"
Cloakroom	2.03 x 1.57	6'6" x 5'1"
Utility Room	1.57 x 0.80	5'1" x 2'6"



DIMENSIONS	Metric	Imperial
<b>Gross Private Amenity Area</b>	<b>56.6m<sup>2</sup></b>	<b>609.2ft<sup>2</sup></b>
Rear Garden	8.97 x 4.21	29'4" x 13'7"
Front Terrace	8.93 x 2.02	29'2" x 6'6"

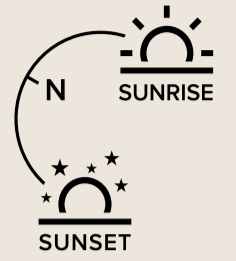
**FLOORPLAN KEY**

WD Washer/Dryer DW Dishwasher FF Fridge Freezer O Oven S Storage W Wardrobe H Hot Water Cylinder B Boiler M Mechanical Ventilation/Heat Recovery CS Cycle Store

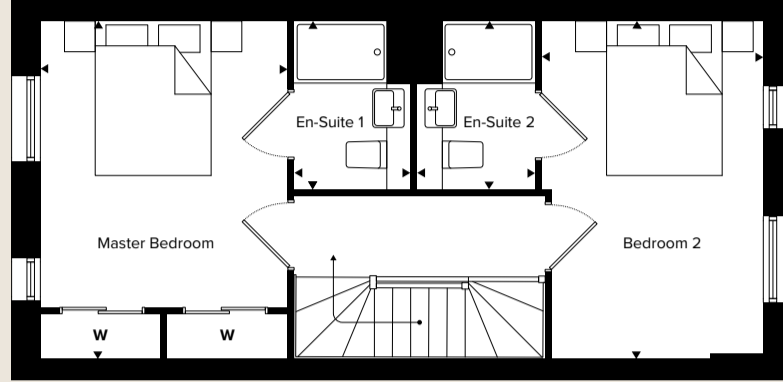


# No 3

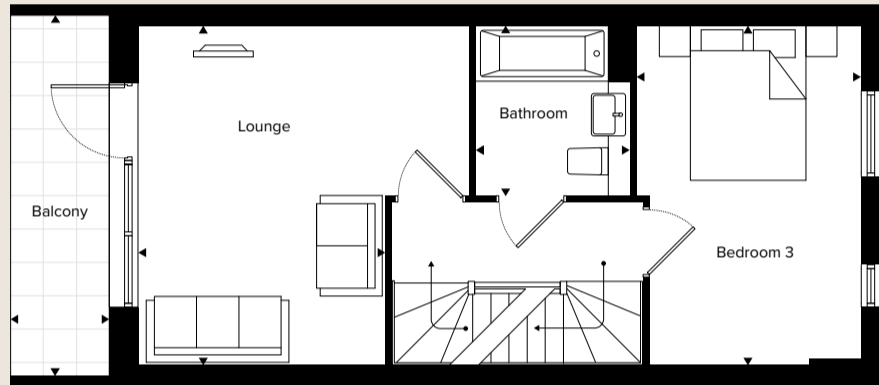
Wycombe Street



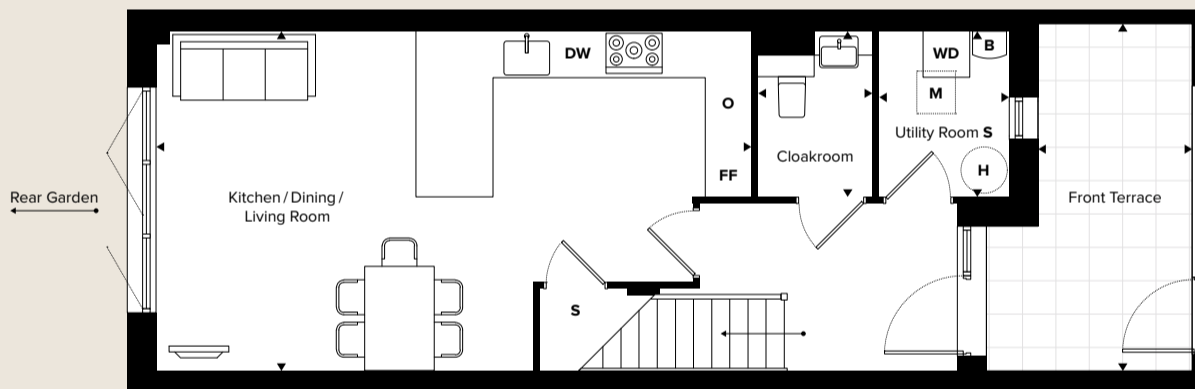
Second Floor



First Floor



Ground Floor



## DIMENSIONS

	Metric	Imperial
<b>Gross Internal Area</b>	<b>119.3m<sup>2</sup></b>	<b>1284ft<sup>2</sup></b>
Kitchen/Dining/Living	7.71 x 4.40	25'3" x 14'4"
Lounge	4.40 x 3.20	14'4" x 10'5"
Master Bedroom	4.40 x 3.20	14'4" x 10'5"
En-Suite 1	2.18 x 1.52	7'1" x 4'9"
Bedroom 2	4.40 x 2.91	14'7" x 9'5"
En-Suite 2	2.18 x 1.52	7'1" x 4'9"
Bedroom 3	4.40 x 2.91	14'7" x 9'5"
Bathroom	2.20 x 1.99	7'2" x 6'5"
Cloakroom	2.15 x 1.50	7'0" x 4'9"
Utility Room (S)	2.15 x 1.68	7'0" x 5'5"
Balcony	4.68 x 1.28	15'3" x 4'2"



DIMENSIONS	Metric	Imperial
<b>Gross Private Amenity Area</b>	<b>73.8m<sup>2</sup></b>	<b>794.4ft<sup>2</sup></b>
Rear Garden	12.21 x 4.66	40'0" x 15'2"
Front Terrace	4.51 x 2.00	14'7" x 6'5"

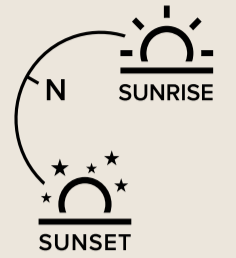
## FLOORPLAN KEY

WD Washer/Dryer DW Dishwasher FF Fridge Freezer O Oven S Storage W Wardrobe H Hot Water Cylinder B Boiler M Mechanical Ventilation/Heat Recovery

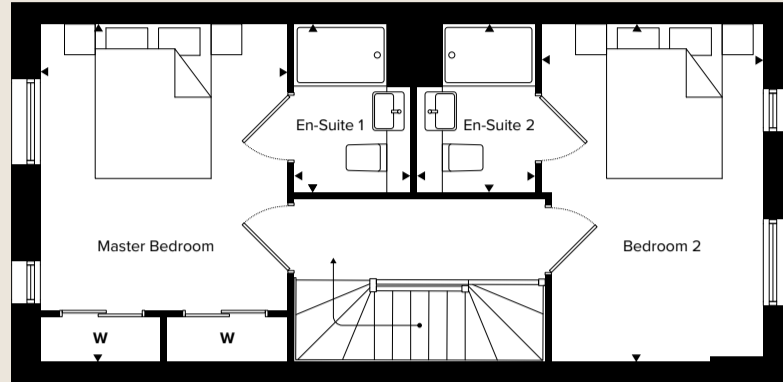


# No 5

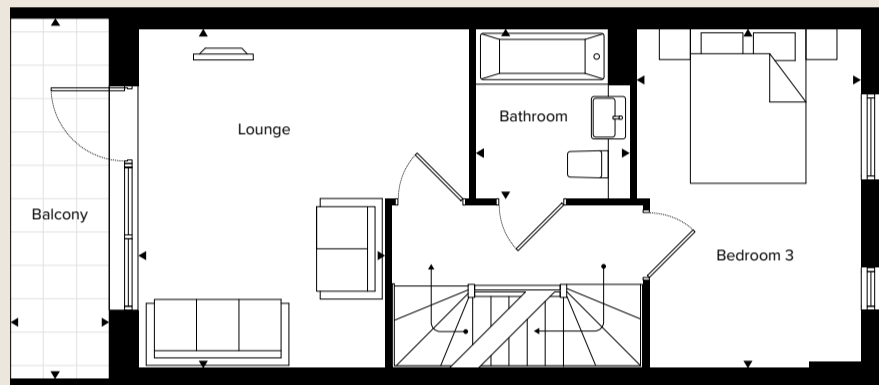
Wycombe Street



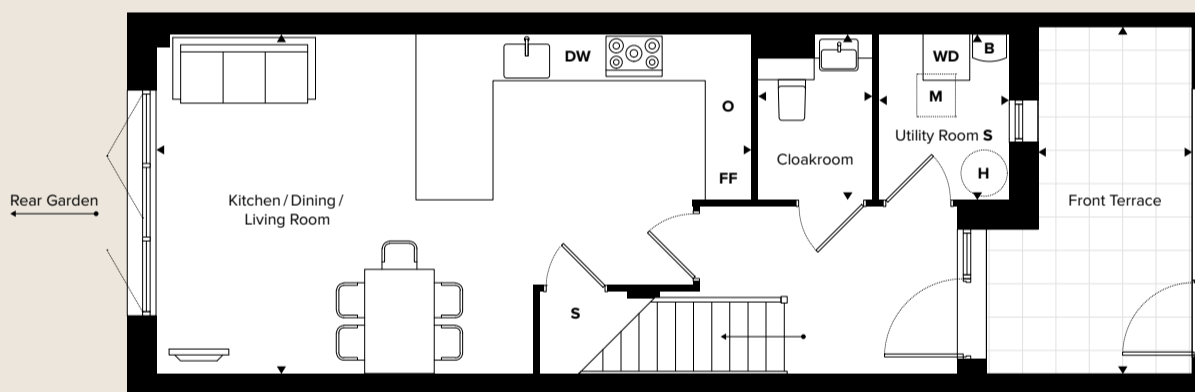
Second Floor



First Floor



Ground Floor



DIMENSIONS	Metric	Imperial
<b>Gross Internal Area</b>	<b>119.3m<sup>2</sup></b>	<b>1284ft<sup>2</sup></b>
Kitchen/Dining/Living	7.71 x 4.40	25'3" x 14'4"
Lounge	4.40 x 3.20	14'4" x 10'5"
Master Bedroom	4.40 x 3.20	14'4" x 10'5"
En-Suite 1	2.18 x 1.52	7'1" x 4'9"
Bedroom 2	4.40 x 2.91	14'7" x 9'5"
En-Suite 2	2.18 x 1.52	7'1" x 4'9"
Bedroom 3	4.40 x 2.91	14'7" x 9'5"
Bathroom	2.20 x 1.99	7'2" x 6'5"
Cloakroom	2.15 x 1.50	7'0" x 4'9"
Utility Room (S)	2.15 x 1.68	7'0" x 5'5"
Balcony	4.68 x 1.28	15'3" x 4'2"



DIMENSIONS	Metric	Imperial
<b>Gross Private Amenity Area</b>	<b>73.9m<sup>2</sup></b>	<b>795.5ft<sup>2</sup></b>
Rear Garden	12.05 x 4.73	39'5" x 15'5"
Front Terrace	4.51 x 2.00	14'7" x 6'5"

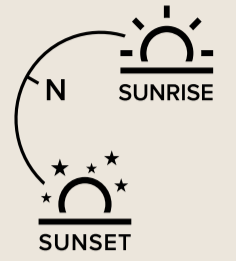
**FLOORPLAN KEY**

WD Washer/Dryer DW Dishwasher FF Fridge Freezer O Oven S Storage W Wardrobe H Hot Water Cylinder B Boiler M Mechanical Ventilation/Heat Recovery

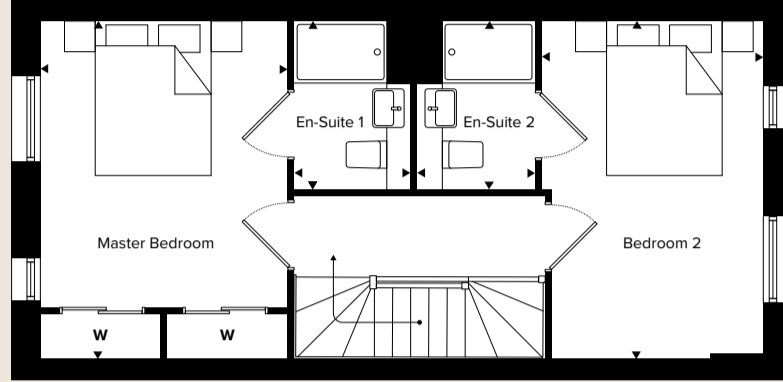


# No 7

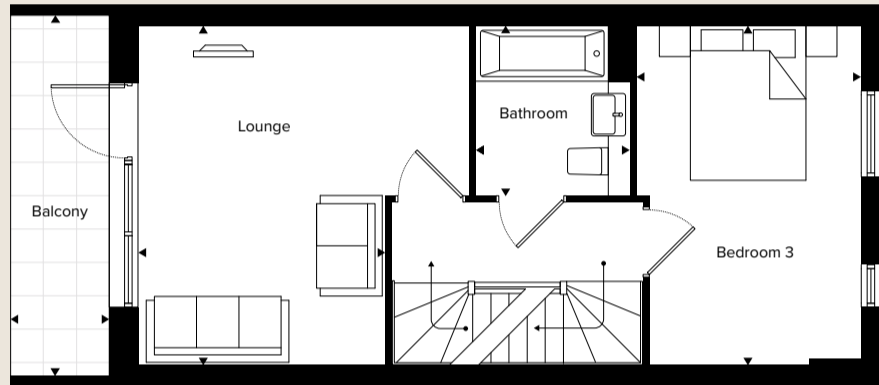
Wycombe Street



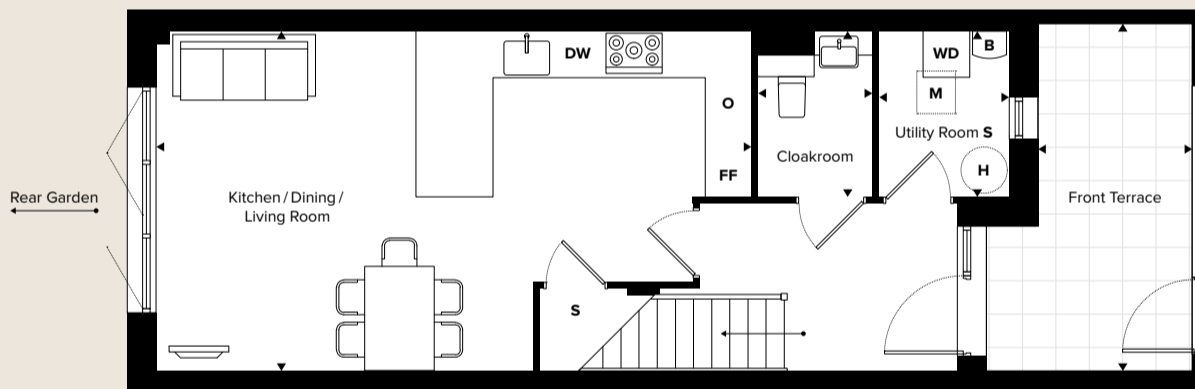
Second Floor



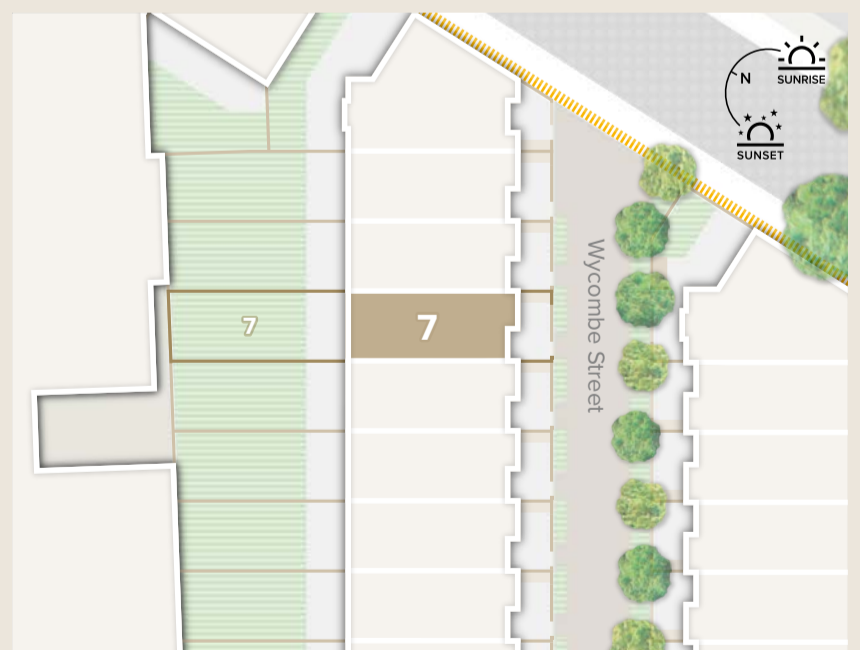
First Floor



Ground Floor



DIMENSIONS	Metric	Imperial
<b>Gross Internal Area</b>	<b>119.3m<sup>2</sup></b>	<b>1284ft<sup>2</sup></b>
Kitchen/Dining/Living	7.71 x 4.40	25'3" x 14'4"
Lounge	4.40 x 3.20	14'4" x 10'5"
Master Bedroom	4.40 x 3.20	14'4" x 10'5"
En-Suite 1	2.18 x 1.52	7'1" x 4'9"
Bedroom 2	4.40 x 2.91	14'7" x 9'5"
En-Suite 2	2.18 x 1.52	7'1" x 4'9"
Bedroom 3	4.40 x 2.91	14'7" x 9'5"
Bathroom	2.20 x 1.99	7'2" x 6'5"
Cloakroom	2.15 x 1.50	7'0" x 4'9"
Utility Room (S)	2.15 x 1.68	7'0" x 5'5"
Balcony	4.68 x 1.28	15'3" x 4'2"



DIMENSIONS	Metric	Imperial
<b>Gross Private Amenity Area</b>	<b>73.0m<sup>2</sup></b>	<b>785.8ft<sup>2</sup></b>
Rear Garden	11.88 x 4.72	38'9" x 15'5"
Front Terrace	4.51 x 2.00	14'7" x 6'5"

**FLOORPLAN KEY**

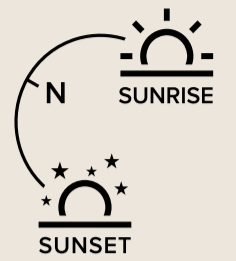
WD Washer/Dryer DW Dishwasher FF Fridge Freezer O Oven S Storage W Wardrobe H Hot Water Cylinder B Boiler M Mechanical Ventilation/Heat Recovery



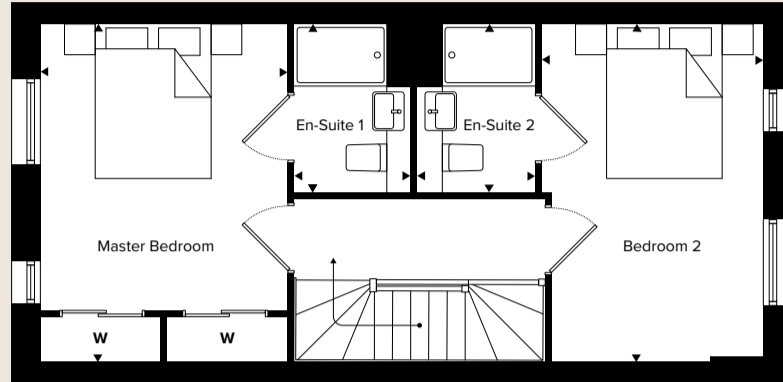


# No 9

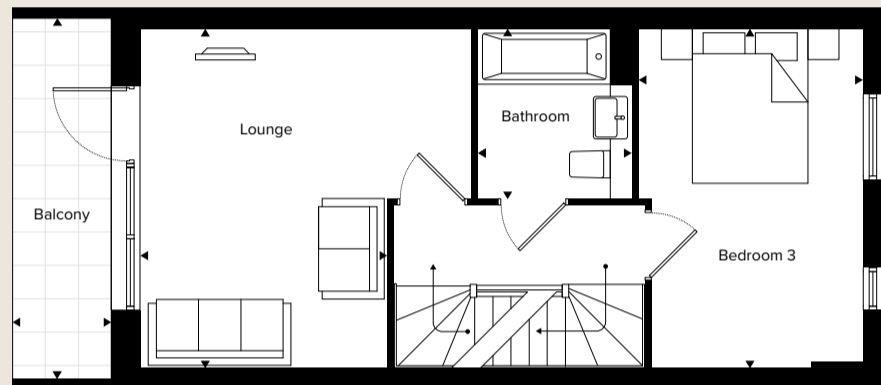
Wycombe Street



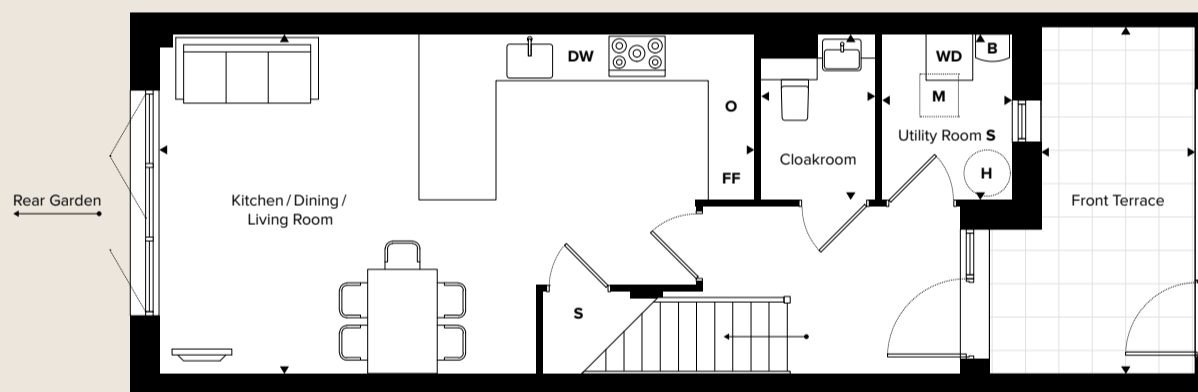
Second Floor



First Floor



Ground Floor



DIMENSIONS	Metric	Imperial
<b>Gross Internal Area</b>	<b>119.3m<sup>2</sup></b>	<b>1284ft<sup>2</sup></b>
Kitchen/Dining/Living	7.71 x 4.40	25'3" x 14'4"
Lounge	4.40 x 3.20	14'4" x 10'5"
Master Bedroom	4.40 x 3.20	14'4" x 10'5"
En-Suite 1	2.18 x 1.52	7'1" x 4'9"
Bedroom 2	4.40 x 2.91	14'7" x 9'5"
En-Suite 2	2.18 x 1.52	7'1" x 4'9"
Bedroom 3	4.40 x 2.91	14'7" x 9'5"
Bathroom	2.20 x 1.99	7'2" x 6'5"
Cloakroom	2.15 x 1.50	7'0" x 4'9"
Utility Room (S)	2.15 x 1.68	7'0" x 5'5"
Balcony	4.68 x 1.28	15'3" x 4'2"



DIMENSIONS	Metric	Imperial
<b>Gross Private Amenity Area</b>	<b>72.3m<sup>2</sup></b>	<b>778.2ft<sup>2</sup></b>
Rear Garden	11.71 x 4.73	38'4" x 15'5"
Front Terrace	4.51 x 2.00	14'7" x 6'5"

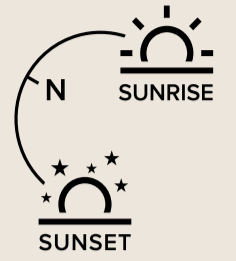
**FLOORPLAN KEY**

WD Washer/Dryer DW Dishwasher FF Fridge Freezer O Oven S Storage W Wardrobe H Hot Water Cylinder B Boiler M Mechanical Ventilation/Heat Recovery

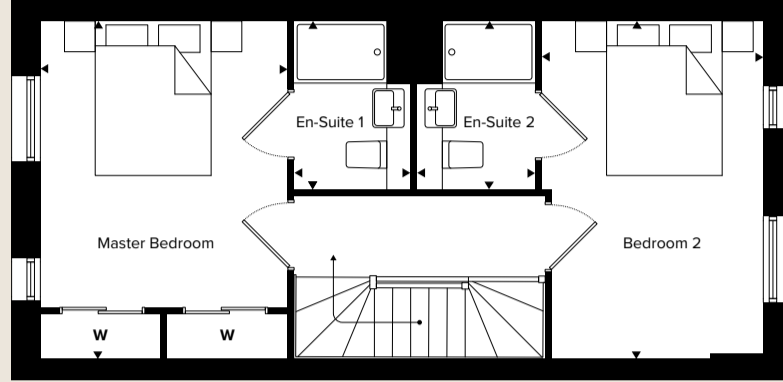


# No 11

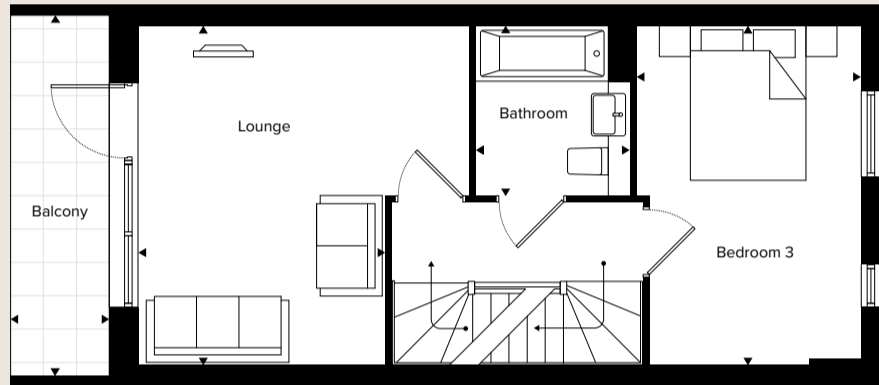
Wycombe Street



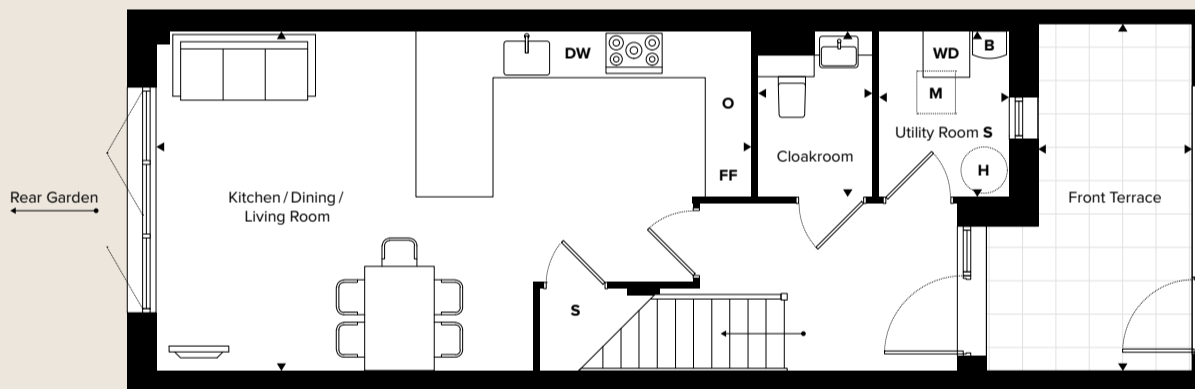
Second Floor



First Floor



Ground Floor



DIMENSIONS	Metric	Imperial
<b>Gross Internal Area</b>	<b>119.3m<sup>2</sup></b>	<b>1284ft<sup>2</sup></b>
Kitchen/Dining/Living	7.71 x 4.40	25'3" x 14'4"
Lounge	4.40 x 3.20	14'4" x 10'5"
Master Bedroom	4.40 x 3.20	14'4" x 10'5"
En-Suite 1	2.18 x 1.52	7'1" x 4'9"
Bedroom 2	4.40 x 2.91	14'7" x 9'5"
En-Suite 2	2.18 x 1.52	7'1" x 4'9"
Bedroom 3	4.40 x 2.91	14'7" x 9'5"
Bathroom	2.20 x 1.99	7'2" x 6'5"
Cloakroom	2.15 x 1.50	7'0" x 4'9"
Utility Room (S)	2.15 x 1.68	7'0" x 5'5"
Balcony	4.68 x 1.28	15'3" x 4'2"



DIMENSIONS	Metric	Imperial
<b>Gross Private Amenity Area</b>	<b>71.4m<sup>2</sup></b>	<b>768.5ft<sup>2</sup></b>
Rear Garden	11.54 x 4.73	37'8" x 15'5"
Front Terrace	4.51 x 2.00	14'7" x 6'5"

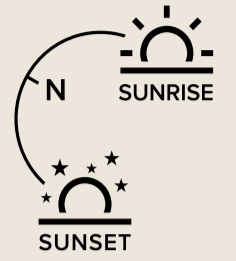
**FLOORPLAN KEY**

WD Washer/Dryer DW Dishwasher FF Fridge Freezer O Oven S Storage W Wardrobe H Hot Water Cylinder B Boiler M Mechanical Ventilation/Heat Recovery

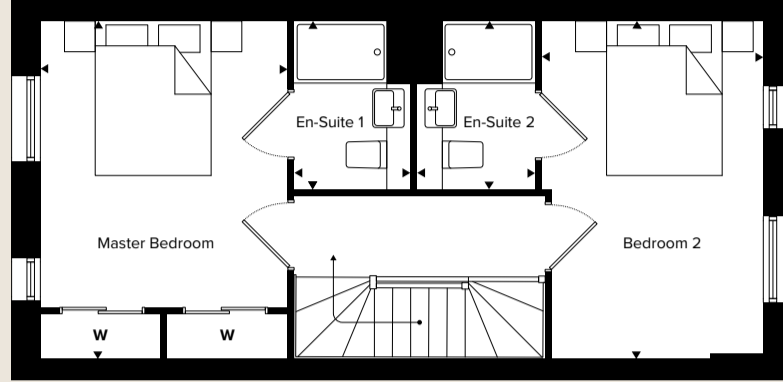


# No 13

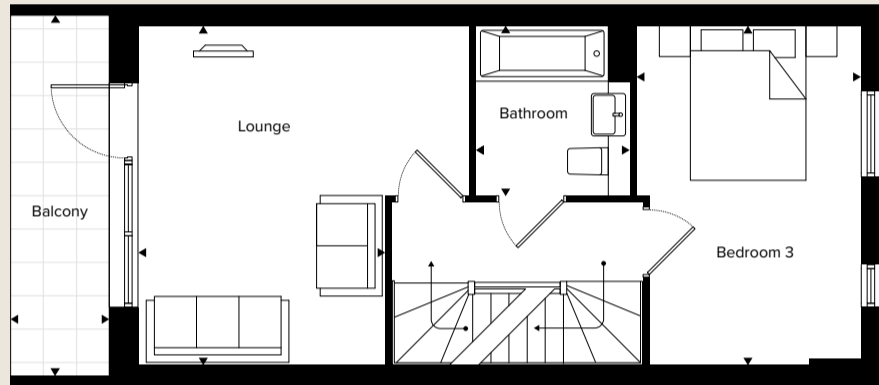
Wycombe Street



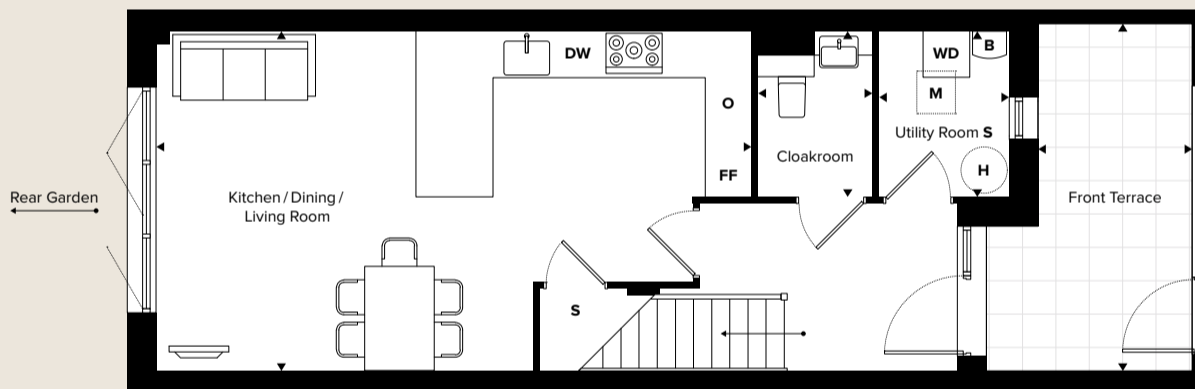
Second Floor



First Floor



Ground Floor



DIMENSIONS	Metric	Imperial
<b>Gross Internal Area</b>	<b>119.3m<sup>2</sup></b>	<b>1284ft<sup>2</sup></b>
Kitchen/Dining/Living	7.71 x 4.40	25'3" x 14'4"
Lounge	4.40 x 3.20	14'4" x 10'5"
Master Bedroom	4.40 x 3.20	14'4" x 10'5"
En-Suite 1	2.18 x 1.52	7'1" x 4'9"
Bedroom 2	4.40 x 2.91	14'7" x 9'5"
En-Suite 2	2.18 x 1.52	7'1" x 4'9"
Bedroom 3	4.40 x 2.91	14'7" x 9'5"
Bathroom	2.20 x 1.99	7'2" x 6'5"
Cloakroom	2.15 x 1.50	7'0" x 4'9"
Utility Room (S)	2.15 x 1.68	7'0" x 5'5"
Balcony	4.68 x 1.28	15'3" x 4'2"



DIMENSIONS	Metric	Imperial
<b>Gross Private Amenity Area</b>	<b>70.7m<sup>2</sup></b>	<b>761.0ft<sup>2</sup></b>
Rear Garden	11.37 x 4.73	37'3" x 15'5"
Front Terrace	4.51 x 2.00	14'7" x 6'5"

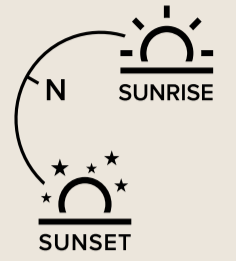
**FLOORPLAN KEY**

WD Washer/Dryer DW Dishwasher FF Fridge Freezer O Oven S Storage W Wardrobe H Hot Water Cylinder B Boiler M Mechanical Ventilation/Heat Recovery

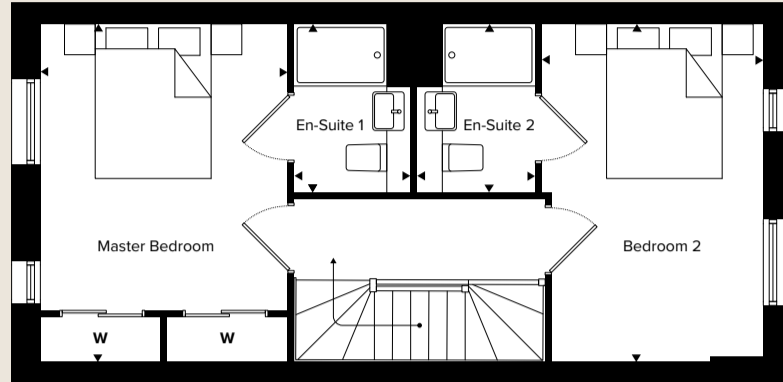


# No 15

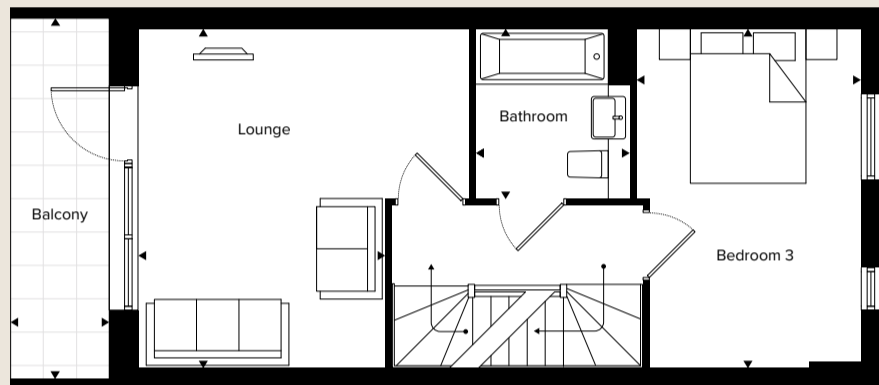
Wycombe Street



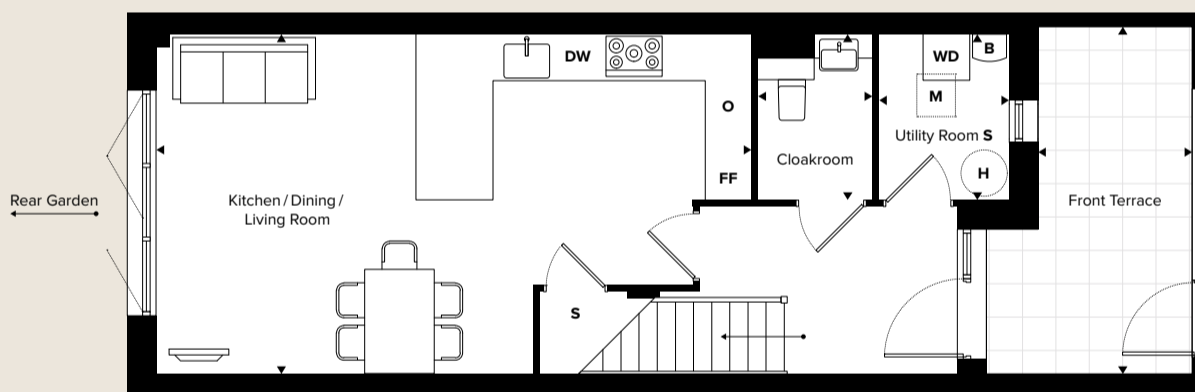
Second Floor



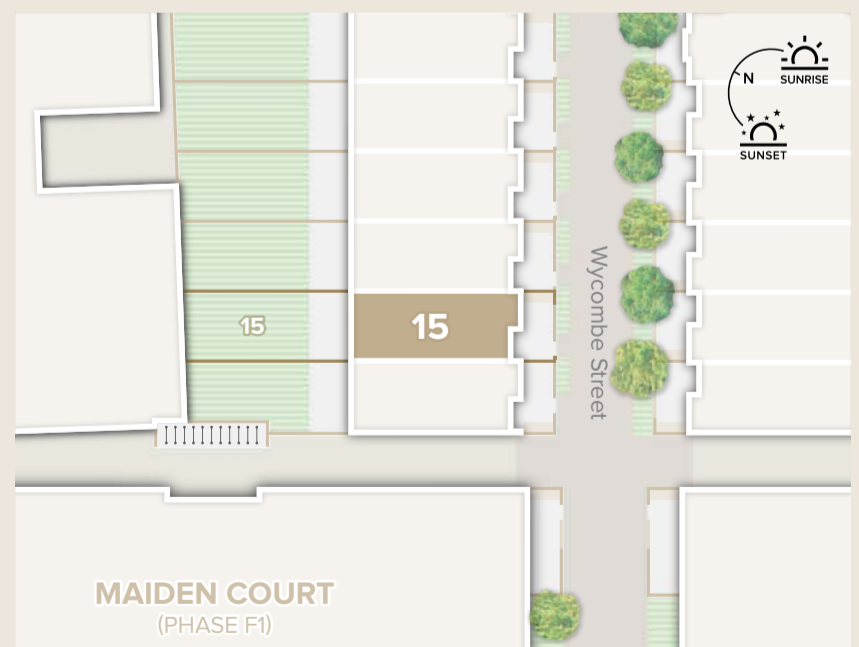
First Floor



Ground Floor



DIMENSIONS	Metric	Imperial
<b>Gross Internal Area</b>	<b>119.3m<sup>2</sup></b>	<b>1284ft<sup>2</sup></b>
Kitchen/Dining/Living	7.71 x 4.40	25'3" x 14'4"
Lounge	4.40 x 3.20	14'4" x 10'5"
Master Bedroom	4.40 x 3.20	14'4" x 10'5"
En-Suite 1	2.18 x 1.52	7'1" x 4'9"
Bedroom 2	4.40 x 2.91	14'7" x 9'5"
En-Suite 2	2.18 x 1.52	7'1" x 4'9"
Bedroom 3	4.40 x 2.91	14'7" x 9'5"
Bathroom	2.20 x 1.99	7'2" x 6'5"
Cloakroom	2.15 x 1.50	7'0" x 4'9"
Utility Room (S)	2.15 x 1.68	7'0" x 5'5"
Balcony	4.68 x 1.28	15'3" x 4'2"



DIMENSIONS	Metric	Imperial
<b>Gross Private Amenity Area</b>	<b>69.9m<sup>2</sup></b>	<b>752.4ft<sup>2</sup></b>
Rear Garden	11.20 x 4.73	36'7" x 15'5"
Front Terrace	4.51 x 2.00	14'7" x 6'5"

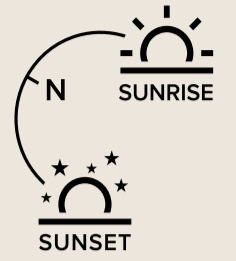
**FLOORPLAN KEY**

WD Washer/Dryer DW Dishwasher FF Fridge Freezer O Oven S Storage W Wardrobe H Hot Water Cylinder B Boiler M Mechanical Ventilation/Heat Recovery

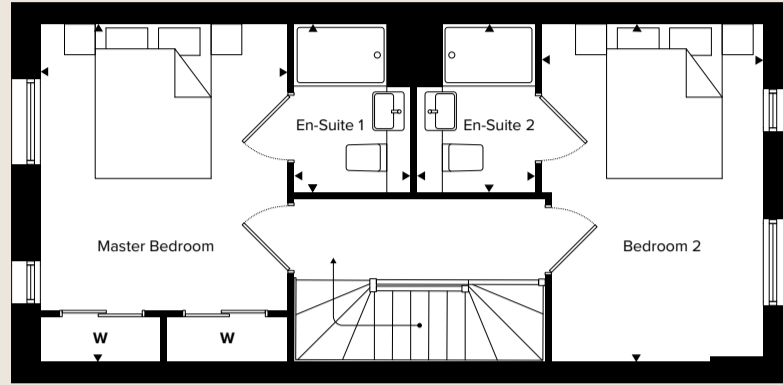


# No 17

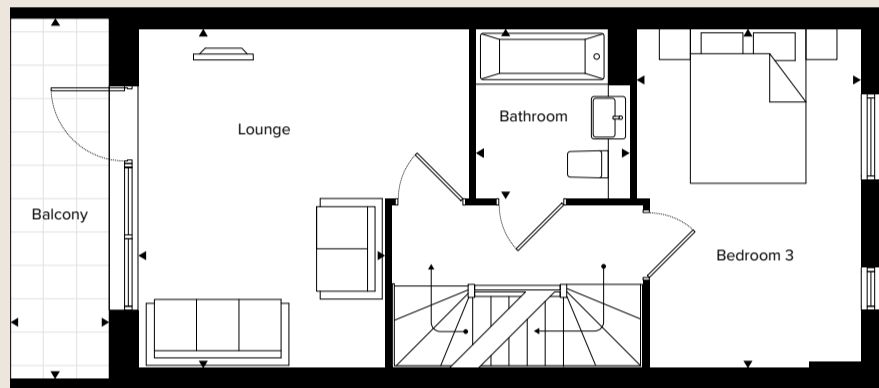
Wycombe Street



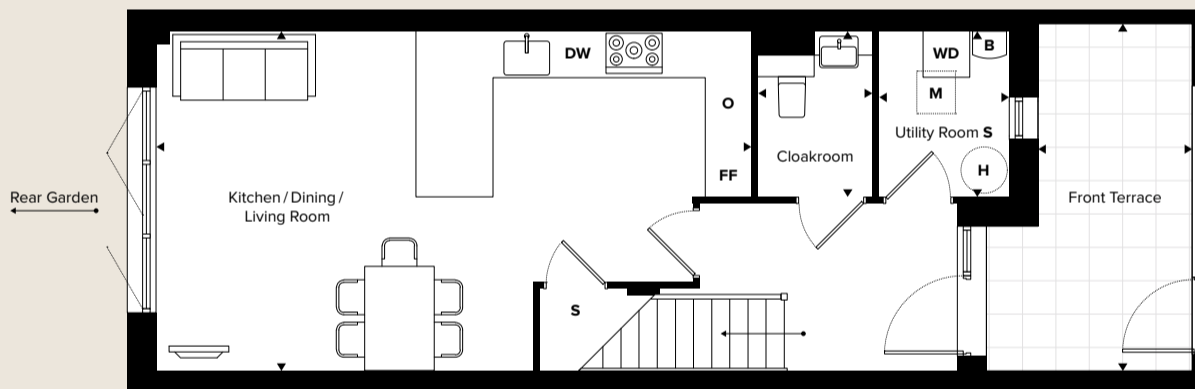
Second Floor



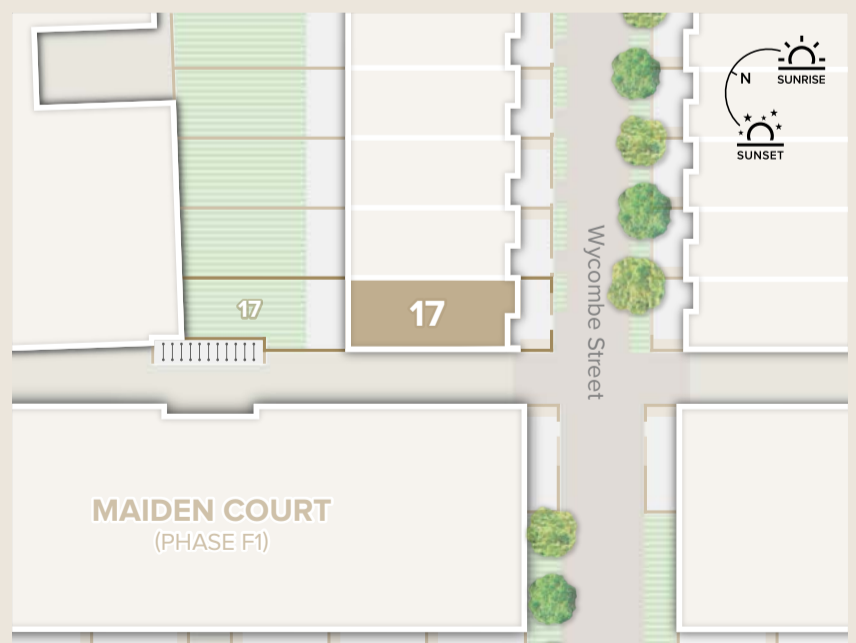
First Floor



Ground Floor



DIMENSIONS	Metric	Imperial
<b>Gross Internal Area</b>	<b>119.3m<sup>2</sup></b>	<b>1284ft<sup>2</sup></b>
Kitchen/Dining/Living	7.71 x 4.40	25'3" x 14'4"
Lounge	4.40 x 3.20	14'4" x 10'5"
Master Bedroom	4.40 x 3.20	14'4" x 10'5"
En-Suite 1	2.18 x 1.52	7'1" x 4'9"
Bedroom 2	4.40 x 2.91	14'7" x 9'5"
En-Suite 2	2.18 x 1.52	7'1" x 4'9"
Bedroom 3	4.40 x 2.91	14'7" x 9'5"
Bathroom	2.20 x 1.99	7'2" x 6'5"
Cloakroom	2.15 x 1.50	7'0" x 4'9"
Utility Room (S)	2.15 x 1.68	7'0" x 5'5"
Balcony	4.68 x 1.28	15'3" x 4'2"



DIMENSIONS	Metric	Imperial
<b>Gross Private Amenity Area</b>	<b>69.0m<sup>2</sup></b>	<b>742.7ft<sup>2</sup></b>
Rear Garden	11.04 x 4.69	36'2" x 15'3"
Front Terrace	4.51 x 2.00	14'7" x 6'5"

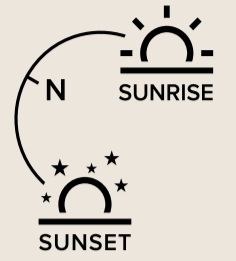
**FLOORPLAN KEY**

WD Washer/Dryer DW Dishwasher FF Fridge Freezer O Oven S Storage W Wardrobe H Hot Water Cylinder B Boiler M Mechanical Ventilation/Heat Recovery

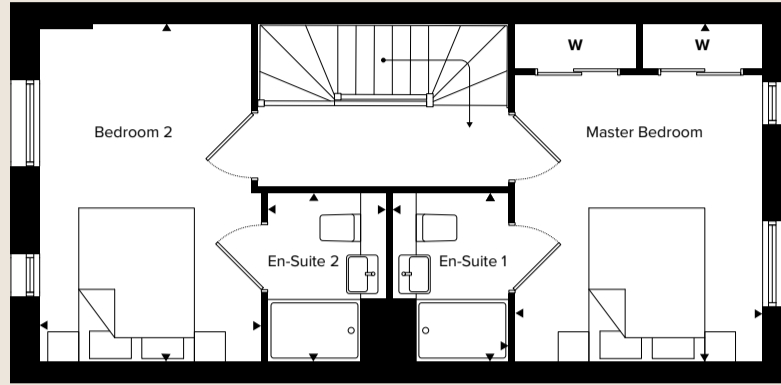


# No 4

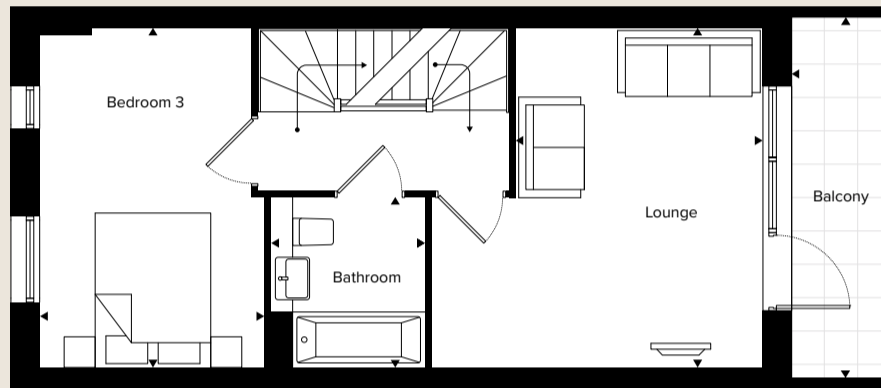
Wycombe Street



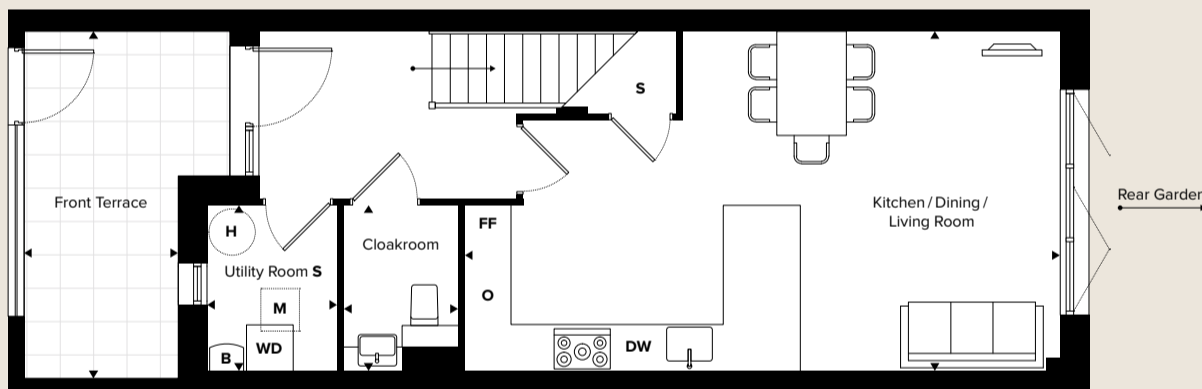
Second Floor



First Floor



Ground Floor



DIMENSIONS	Metric	Imperial
<b>Gross Internal Area</b>	<b>119.3m<sup>2</sup></b>	<b>1284ft<sup>2</sup></b>
Kitchen/Dining/Living	7.71 x 4.40	25'3" x 14'4"
Lounge	4.40 x 3.20	14'4" x 10'5"
Master Bedroom	4.40 x 3.20	14'4" x 10'5"
En-Suite 1	2.18 x 1.52	7'1" x 4'9"
Bedroom 2	4.40 x 2.91	14'7" x 9'5"
En-Suite 2	2.18 x 1.52	7'1" x 4'9"
Bedroom 3	4.40 x 2.91	14'7" x 9'5"
Bathroom	2.20 x 1.99	7'2" x 6'5"
Cloakroom	2.15 x 1.50	7'0" x 4'9"
Utility Room (S)	2.15 x 1.68	7'0" x 5'5"
Balcony	4.68 x 1.28	15'3" x 4'2"



DIMENSIONS	Metric	Imperial
<b>Gross Private Amenity Area</b>	<b>75.2m<sup>2</sup></b>	<b>809.5ft<sup>2</sup></b>
Rear Garden	12.87 x 4.47	42'2" x 14'6"
Front Terrace	4.51 x 2.00	14'7" x 6'5"

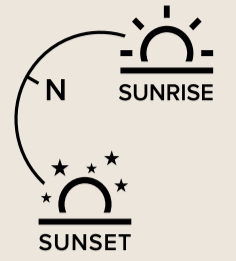
**FLOORPLAN KEY**

WD Washer/Dryer DW Dishwasher FF Fridge Freezer O Oven S Storage W Wardrobe H Hot Water Cylinder B Boiler M Mechanical Ventilation/Heat Recovery

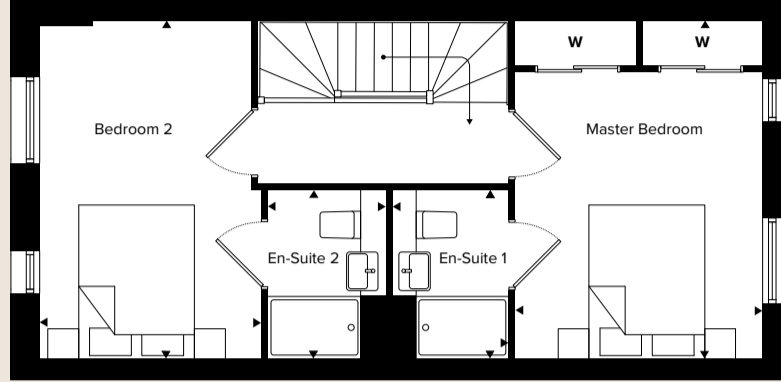


# No 6

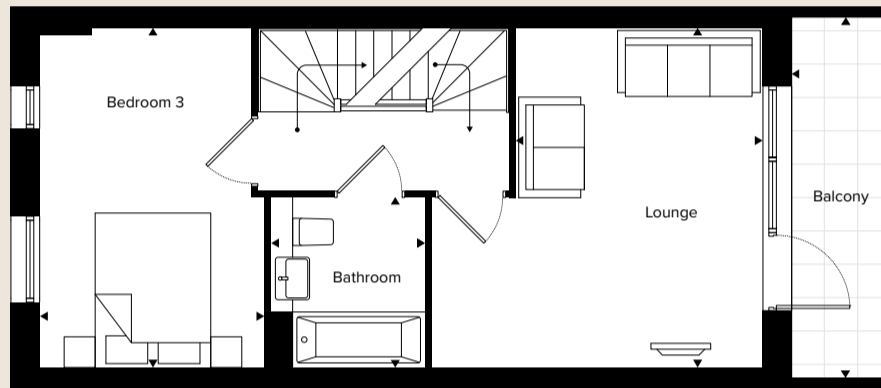
Wycombe Street



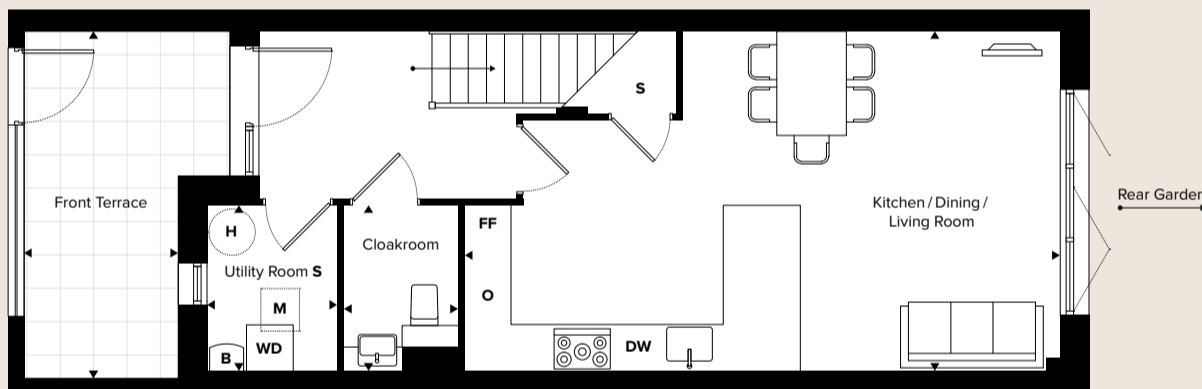
Second Floor



First Floor



Ground Floor



DIMENSIONS	Metric	Imperial
<b>Gross Internal Area</b>	<b>119.3m<sup>2</sup></b>	<b>1284ft<sup>2</sup></b>
Kitchen/Dining/Living	7.71 x 4.40	25'3" x 14'4"
Lounge	4.40 x 3.20	14'4" x 10'5"
Master Bedroom	4.40 x 3.20	14'4" x 10'5"
En-Suite 1	2.18 x 1.52	7'1" x 4'9"
Bedroom 2	4.40 x 2.91	14'7" x 9'5"
En-Suite 2	2.18 x 1.52	7'1" x 4'9"
Bedroom 3	4.40 x 2.91	14'7" x 9'5"
Bathroom	2.20 x 1.99	7'2" x 6'5"
Cloakroom	2.15 x 1.50	7'0" x 4'9"
Utility Room (S)	2.15 x 1.68	7'0" x 5'5"
Balcony	4.68 x 1.28	15'3" x 4'2"



DIMENSIONS	Metric	Imperial
<b>Gross Private Amenity Area</b>	<b>66.0m<sup>2</sup></b>	<b>710.4ft<sup>2</sup></b>
Rear Garden	10.72 x 4.83	35'1" x 15'8"
Front Terrace	4.51 x 2.00	14'7" x 6'5"

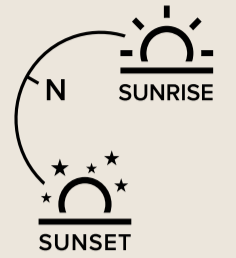
**FLOORPLAN KEY**

WD Washer/Dryer DW Dishwasher FF Fridge Freezer O Oven S Storage W Wardrobe H Hot Water Cylinder B Boiler M Mechanical Ventilation/Heat Recovery

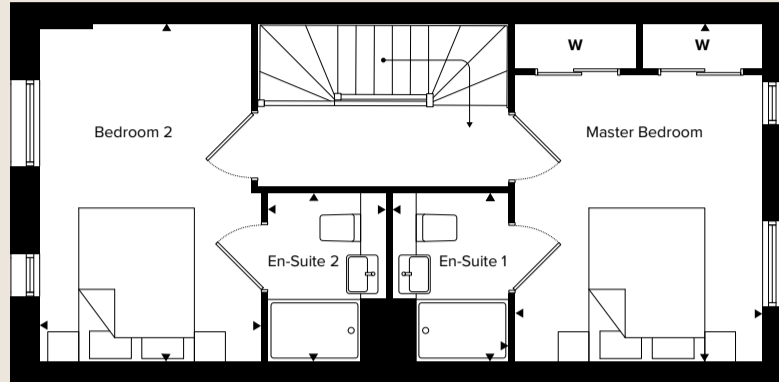


# No 8

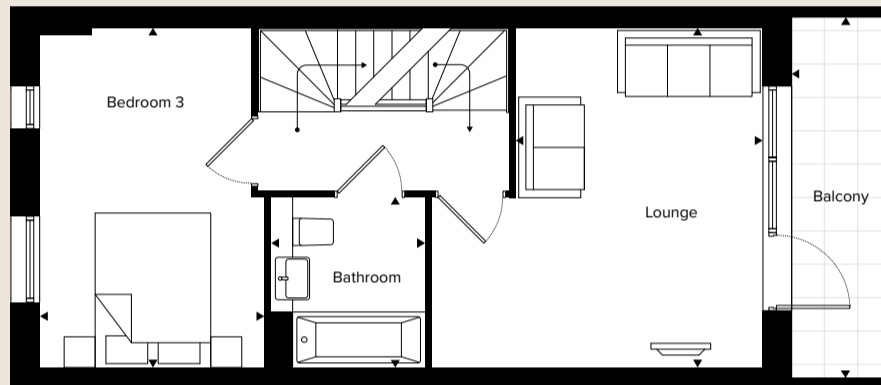
Wycombe Street



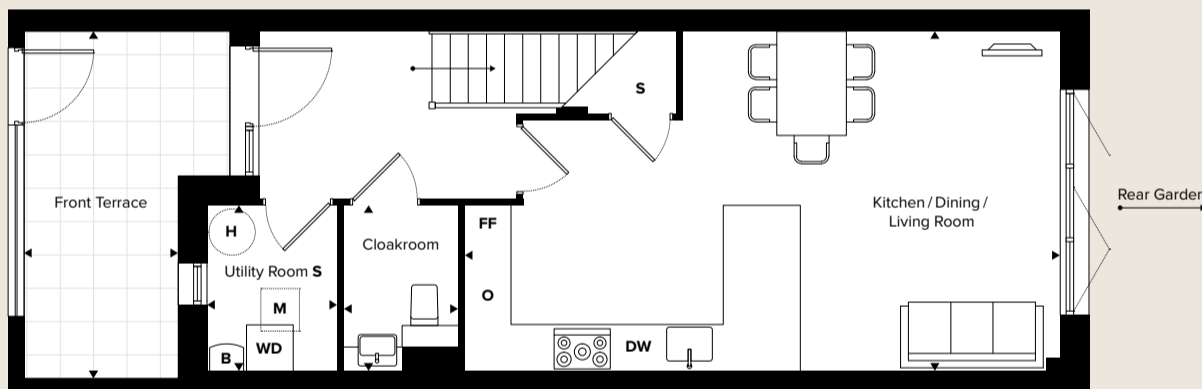
Second Floor



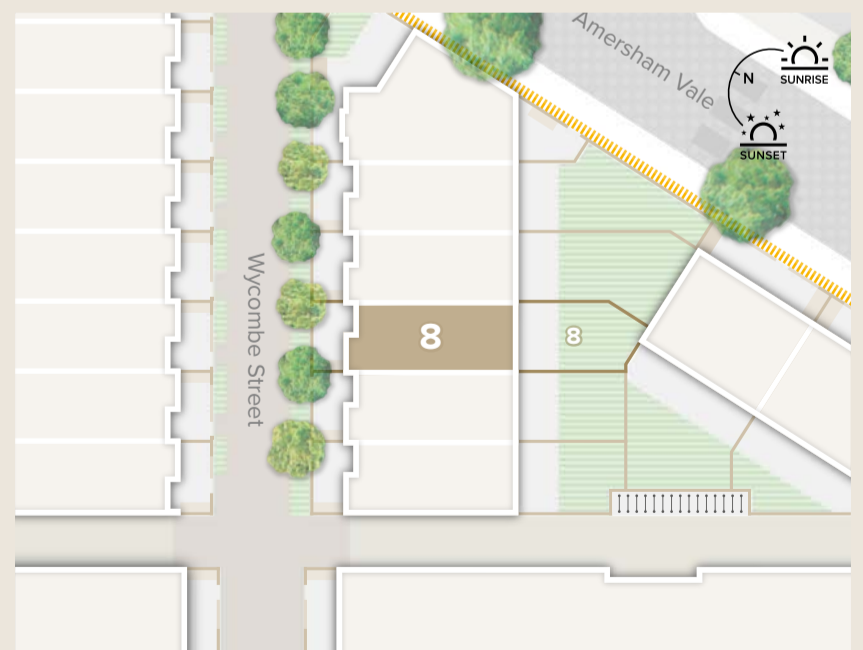
First Floor



Ground Floor



DIMENSIONS	Metric	Imperial
<b>Gross Internal Area</b>	<b>119.3m<sup>2</sup></b>	<b>1284ft<sup>2</sup></b>
Kitchen/Dining/Living	7.71 x 4.40	25'3" x 14'4"
Lounge	4.40 x 3.20	14'4" x 10'5"
Master Bedroom	4.40 x 3.20	14'4" x 10'5"
En-Suite 1	2.18 x 1.52	7'1" x 4'9"
Bedroom 2	4.40 x 2.91	14'7" x 9'5"
En-Suite 2	2.18 x 1.52	7'1" x 4'9"
Bedroom 3	4.40 x 2.91	14'7" x 9'5"
Bathroom	2.20 x 1.99	7'2" x 6'5"
Cloakroom	2.15 x 1.50	7'0" x 4'9"
Utility Room (S)	2.15 x 1.68	7'0" x 5'5"
Balcony	4.68 x 1.28	15'3" x 4'2"



DIMENSIONS	Metric	Imperial
<b>Gross Private Amenity Area</b>	<b>53.3m<sup>2</sup></b>	<b>573.7ft<sup>2</sup></b>
Rear Garden	7.68 x 4.73	25'2" x 15'5"
Front Terrace	4.51 x 2.00	14'7" x 6'5"

**FLOORPLAN KEY**

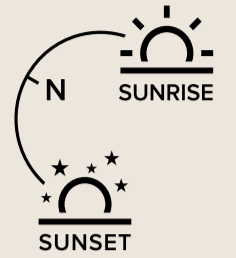
WD Washer/Dryer DW Dishwasher FF Fridge Freezer O Oven S Storage W Wardrobe H Hot Water Cylinder B Boiler M Mechanical Ventilation/Heat Recovery



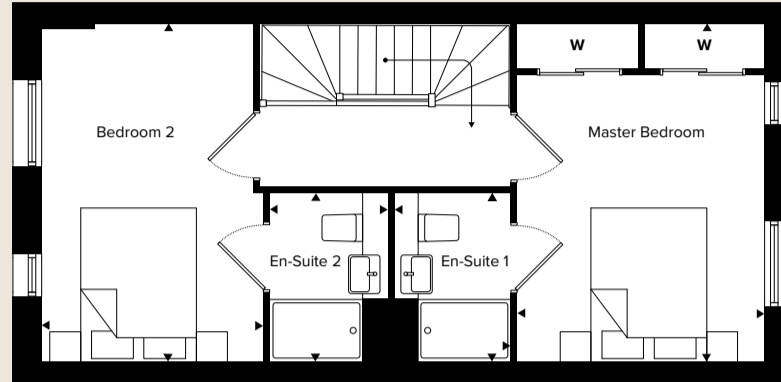


# No 10

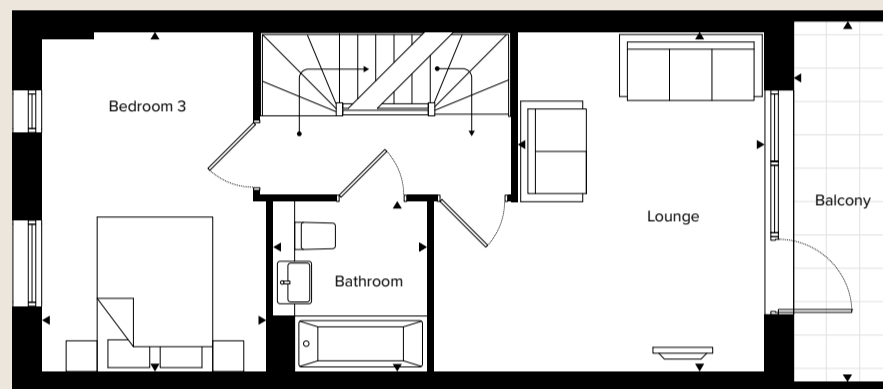
Wycombe Street



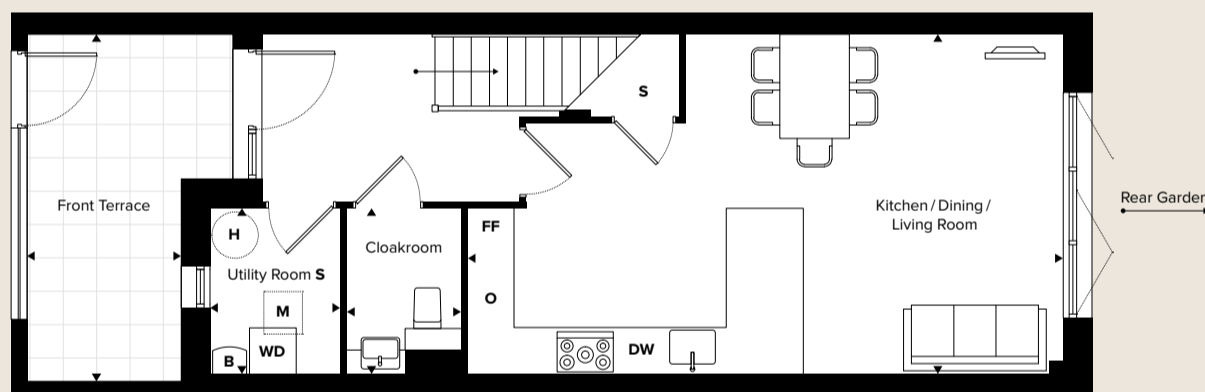
Second Floor



First Floor



Ground Floor



DIMENSIONS	Metric	Imperial
<b>Gross Internal Area</b>	<b>119.3m<sup>2</sup></b>	<b>1284ft<sup>2</sup></b>
Kitchen/Dining/Living	7.71 x 4.40	25'3" x 14'4"
Lounge	4.40 x 3.20	14'4" x 10'5"
Master Bedroom	4.40 x 3.20	14'4" x 10'5"
En-Suite 1	2.18 x 1.52	7'1" x 4'9"
Bedroom 2	4.40 x 2.91	14'7" x 9'5"
En-Suite 2	2.18 x 1.52	7'1" x 4'9"
Bedroom 3	4.40 x 2.91	14'7" x 9'5"
Bathroom	2.20 x 1.99	7'2" x 6'5"
Cloakroom	2.15 x 1.50	7'0" x 4'9"
Utility Room (S)	2.15 x 1.68	7'0" x 5'5"
Balcony	4.68 x 1.28	15'3" x 4'2"



DIMENSIONS	Metric	Imperial
<b>Gross Private Amenity Area</b>	<b>51.4m<sup>2</sup></b>	<b>553.3ft<sup>2</sup></b>
Rear Garden	7.37 x 4.73	24'1" x 15'5"
Front Terrace	4.51 x 2.00	14'7" x 6'5"

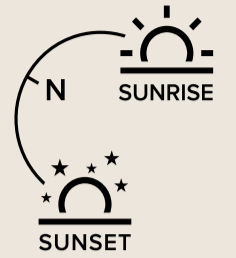
**FLOORPLAN KEY**

WD Washer/Dryer DW Dishwasher FF Fridge Freezer O Oven S Storage W Wardrobe H Hot Water Cylinder B Boiler M Mechanical Ventilation/Heat Recovery

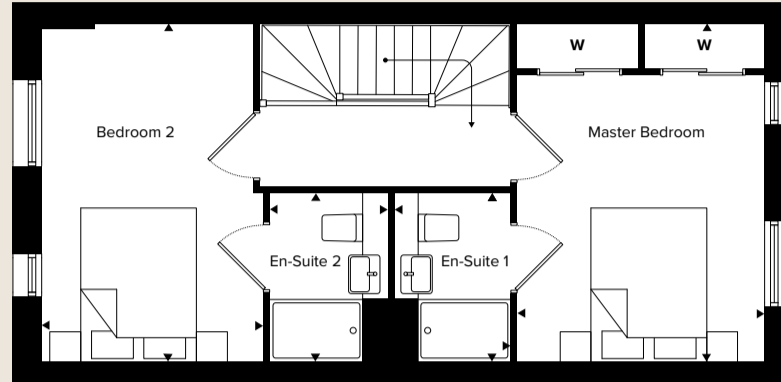


# No 12

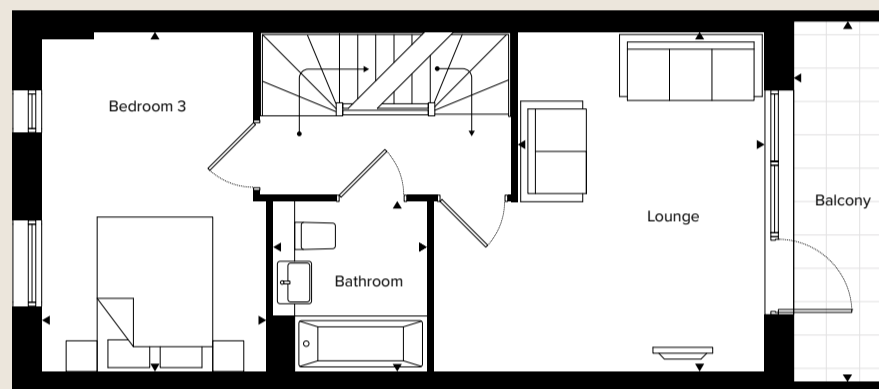
Wycombe Street



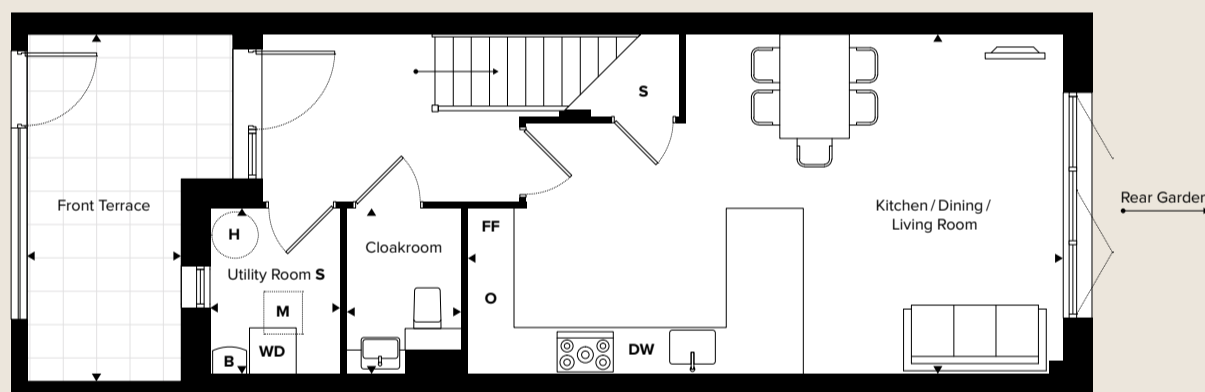
Second Floor



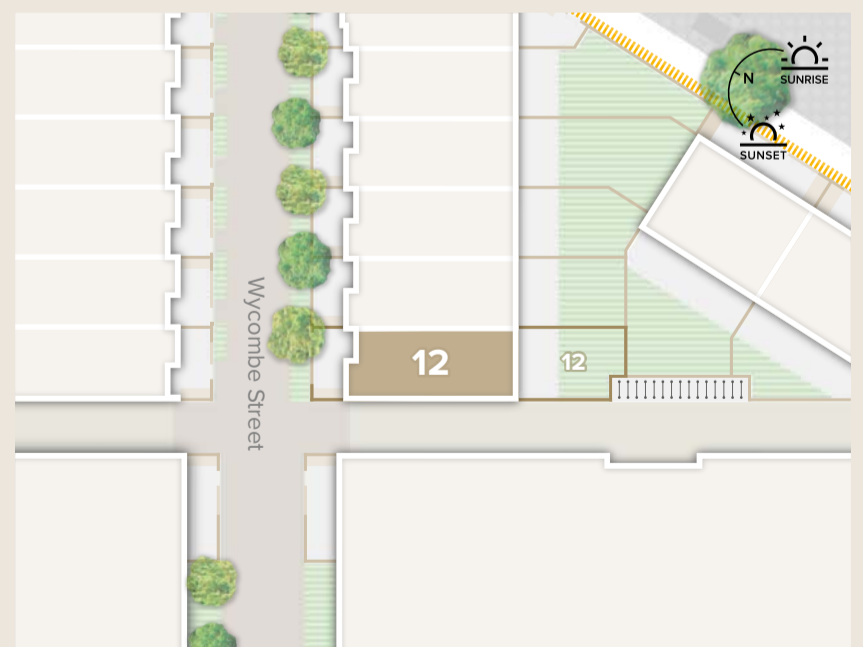
First Floor



Ground Floor



DIMENSIONS	Metric	Imperial
<b>Gross Internal Area</b>	<b>119.3m<sup>2</sup></b>	<b>1284ft<sup>2</sup></b>
Kitchen/Dining/Living	7.71 x 4.40	25'3" x 14'4"
Lounge	4.40 x 3.20	14'4" x 10'5"
Master Bedroom	4.40 x 3.20	14'4" x 10'5"
En-Suite 1	2.18 x 1.52	7'1" x 4'9"
Bedroom 2	4.40 x 2.91	14'7" x 9'5"
En-Suite 2	2.18 x 1.52	7'1" x 4'9"
Bedroom 3	4.40 x 2.91	14'7" x 9'5"
Bathroom	2.20 x 1.99	7'2" x 6'5"
Cloakroom	2.15 x 1.50	7'0" x 4'9"
Utility Room (S)	2.15 x 1.68	7'0" x 5'5"
Balcony	4.68 x 1.28	15'3" x 4'2"



DIMENSIONS	Metric	Imperial
<b>Gross Private Amenity Area</b>	<b>52.5m<sup>2</sup></b>	<b>565.1ft<sup>2</sup></b>
Rear Garden	7.37 x 4.80	24'1" x 15'7"
Front Terrace	4.51 x 2.00	14'7" x 6'5"

**FLOORPLAN KEY**

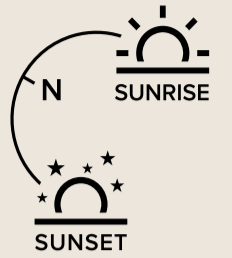
WD Washer/Dryer DW Dishwasher FF Fridge Freezer O Oven S Storage W Wardrobe H Hot Water Cylinder B Boiler M Mechanical Ventilation/Heat Recovery



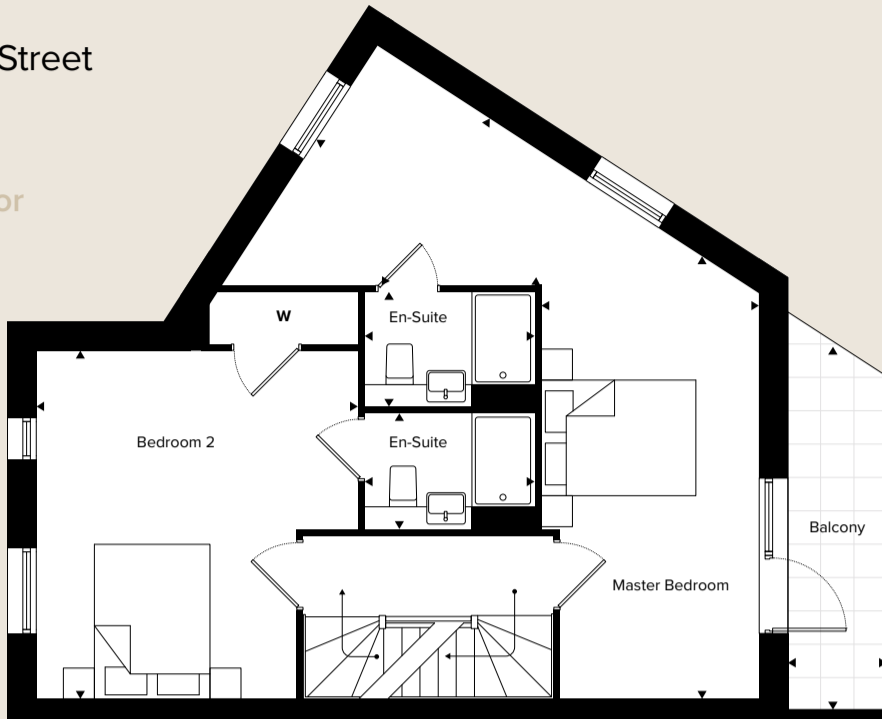


# No 2

Wycombe Street



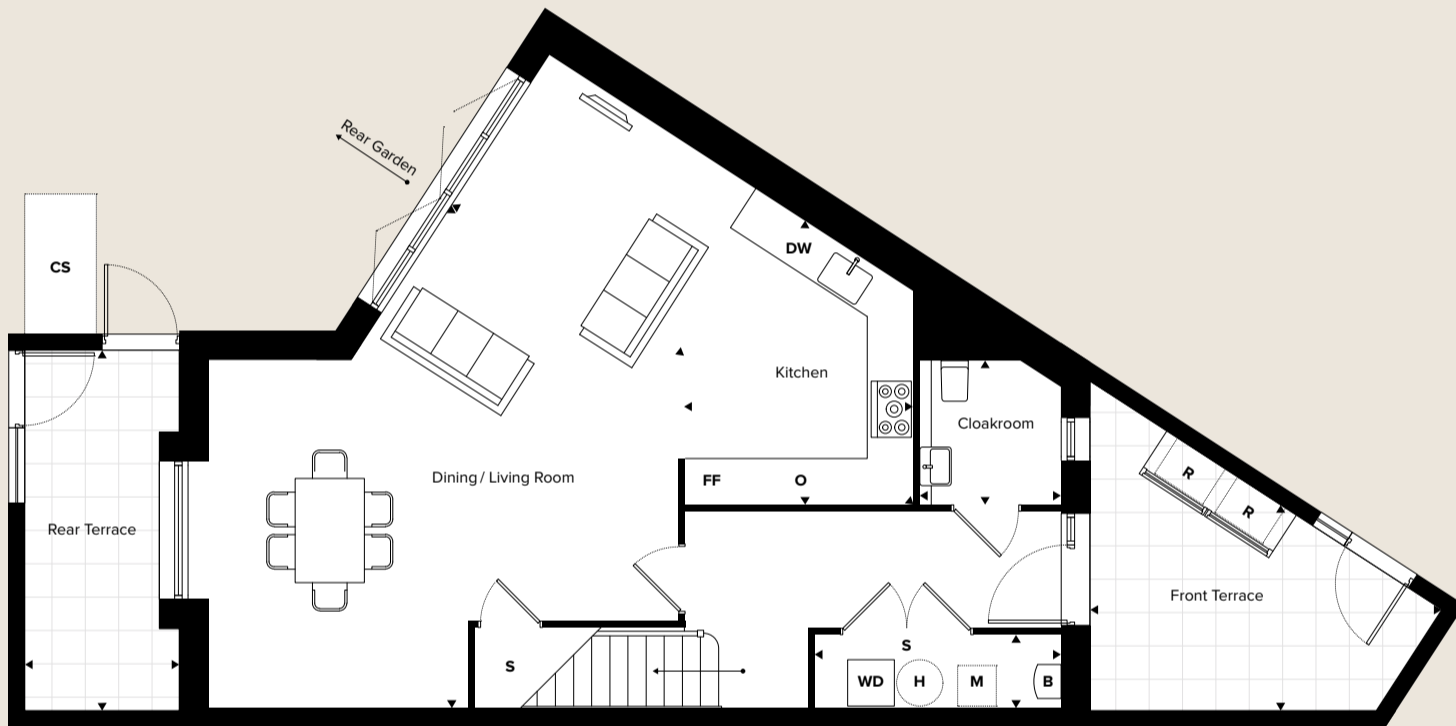
First Floor



Second Floor



Ground Floor



DIMENSIONS	Metric	Imperial
<b>Gross Internal Area</b>	<b>167.7m<sup>2</sup></b>	<b>1805ft<sup>2</sup></b>
Dining/Living	3.59 x 6.52	11'7" x 21'3"
Kitchen	2.98 x 3.69	9'7" x 12'1"
Master Bedroom	5.73 x 2.82	18'8" x 9'2"
En-Suite 1	3.46 x 2.57	11'3" x 8'4"
En-Suite 2	2.20 x 1.49	7'2" x 4'8"
Bedroom 2	4.51 x 4.18	14'7" x 13'7"
En-Suite 2	2.20 x 1.49	7'2" x 4'8"
Bedroom 3	4.51 x 2.92	14'7" x 9'5"
Bedroom 4	4.51 x 4.29	14'7" x 14'0"
Bathroom	2.25 x 2.00	7'3" x 6'5"
Cloakroom	1.87 x 1.83	6'1" x 5'9"
Utility Room	3.19 x 9.54	10'4" x 3'1"



DIMENSIONS	Metric	Imperial
<b>Gross Private Amenity Area</b>	<b>57.8m<sup>2</sup></b>	<b>622.2ft<sup>2</sup></b>
Rear Garden	5.67 x 5.17	18'6" x 16'9"
Rear Terrace	2.00 x 4.67	6'5" x 15'3"
Front Terrace	4.57 x 2.66	14'9" x 8'7"

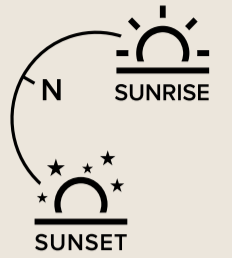
**FLOORPLAN KEY**

WD Washer/Dryer DW Dishwasher FF Fridge Freezer O Oven S Storage W Wardrobe H Hot Water Cylinder B Boiler M Mechanical Ventilation/Heat Recovery CS Cycle Store R Refuse & Recycling



# No 1

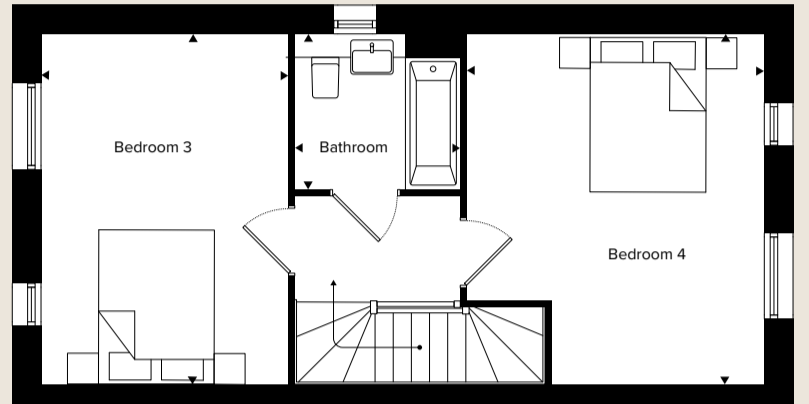
Wycombe Street



First Floor



Second Floor



Ground Floor



DIMENSIONS	Metric	Imperial
<b>Gross Internal Area</b>	<b>176.8m<sup>2</sup></b>	<b>1903ft<sup>2</sup></b>
Kitchen/Dining/Living	7.76 x 6.49	25'4" x 21'2"
Master Bedroom	4.60 x 4.05	15'0" x 13'2"
En-Suite 1	2.14 x 1.76	7'0" x 5'7"
Dressing Room	1.77 x 1.82	5'8" x 5'9"
Bedroom 2	5.13 x 3.24	16'8" x 10'6"
En-Suite 2	2.73 x 2.20	8'9" x 7'2"
Bedroom 3	4.53 x 3.85	14'8" x 12'6"
Bedroom 4	4.53 x 3.20	14'8" x 10'5"
Bathroom	2.15 x 1.99	7'0" x 6'5"
Cloakroom	2.58 x 1.50	8'4" x 4'9"
Utility Room	2.11 x 1.25	6'9" x 4'1"
Balcony	4.64 x 1.28	15'2" x 4'2"



DIMENSIONS	Metric	Imperial
<b>Gross Private Amenity Area</b>	<b>80.1m<sup>2</sup></b>	<b>862.2ft<sup>2</sup></b>
Rear Garden	11.59 x 5.50	38'0" x 18'0"
Front Terrace	4.57 x 2.66	14'9" x 8'7"

**FLOORPLAN KEY**

WD Washer/Dryer DW Dishwasher FF Fridge Freezer O Oven S Storage W Wardrobe H Hot Water Cylinder B Boiler M Mechanical Ventilation/Heat Recovery CS Cycle Store





020 7089 1274

TheScene@peabody.org.uk

*Make every day a work of art*

REGISTER YOUR INTEREST

VIEW PRICES & AVAILABILITY

FIND OUT MORE



DISCLAIMER: Apartment layouts provide approximate measurements only. Furniture within the marketing plans is indicative and for guidance purposes only. Dimensions, which are taken from the indicated points of measurement, are for guidance only and are not intended to be used for carpet sizes, appliance space or items of furniture. Apartment areas are provided as gross internal areas and may vary. Bathroom and kitchen layouts are indicative only and are subject to change. Wardrobe size and position may vary. All private outdoor space dimensions and areas are approximate and may vary. The information contained within this document does not constitute part of any offer, contract or warranty. Whilst the plans have been prepared with all due care for the convenience of the intending purchaser, the information contained herein is a preliminary guide only. Every care has been taken in the preparation of this brochure. The details contained herein are for guidance only and should not be relied upon as exactly describing any of the particular material illustrated or written by any order under the Consumer Protection from Unfair Trading Regulations 2008. This information does not constitute a contract, part of a contract or warranty. The developer operates a programme of continuous product development. Features, internal and external, may vary from time to time and may differ from those shown in the brochure. The Scene is a marketing name and may not form part of the postal address for these properties. Information correct at time of publication, June 2021.

