

# The Meadows

Staplehurst





# The Meadows

Staplehurst

A taste of local life

[bovishomes.co.uk](http://bovishomes.co.uk)

**Bovis  
Homes** 





# Welcome to The Meadows

This vibrant new development in Staplehurst is nestled in the Weald of Kent, yet within easy reach of both the south coast and central London. The Meadows is located in the heart of the village which is home to a selection of local amenities, nurseries and schools.



At The Meadows you can choose from a selection of 2, 3, 4 and 5 bedroom homes, all designed to suit the needs of today's modern lifestyles. So if you're looking for a quality new home in a rural location, with great commuter links to London, your search ends here!

## Getting around

Staplehurst offers great transport links onto the A21, M20 and M25. The local train stations are Staplehurst, which is less than a 10 minute walk and Headcorn, under 5 miles from The Meadows. From here you can get direct trains into London in approximately an hour.

## A trip to the shops

Fresh local produce is available to purchase in both the Henhurst Farm shop and the Staplehurst Nurseries and Frankie's Farmshop. Here you can also take a break and enjoy a light bite in the café.

There are two local convenience stores located in the village for the daily necessities. Also found on the High Street is a florist, butchers, opticians, off licence and a pharmacy.

In nearby Cranbrook you'll find a large range of shops from independent stores to a Co-op. Further afield is Maidstone town centre only 9 miles away which caters for all your retail needs with a number of shopping centres and bustling High Street. Tunbridge Wells is a 30 minute drive away offering boutique and high street stores or Ashford Designer Outlet is 40 minutes away.

## Taking time out

There are an abundance of venues and activities to keep the whole family entertained. Why not visit the Big Cat Sanctuary in Smarden or the Buttercups Sanctuary for Goats in nearby Boughton Monchelsea. The Hop Farm in Paddock Wood offers a selection of attractions for children and hosts events throughout the year. For those thrill seekers out there GoApe at Bedgebury Pinetum or the famous Leeds Castle.

The well known vineyard Hush Heath Estate is only 2 miles away, which produces an award winning pink fizz, and Biddenden, Britain's oldest commercial vineyard, also produces cider and juices from its apples and pears.

Sissinghurst Castle and Gardens is located just over a mile away. Located on the hilltop is All Saints Church, a Grade I listed building built in the 12th and 13th centuries. For local sporting enthusiasts there is the village cricket and tennis club.

## Education

There is an extensive range of schools in the local area. At the heart of the village is Staplehurst Primary School. Also located nearby is the Sutton Valence Preparatory School, Sutton Valence Primary School and Senior School. The renowned Cranbrook School for children ages 11 to 18 is located just over 5 miles from The Meadows



Hush Heath Estate  
Home and Heart of Balfour wines



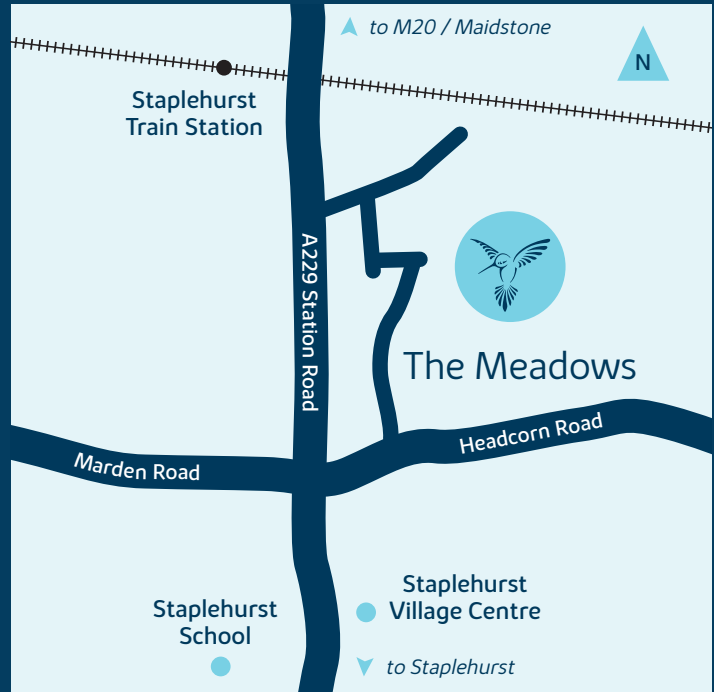
# The Meadows

Headcorn Road,  
Staplehurst TN12 0BS

01580 445013

## From M20

- Leave the M20 at junction 8 signposted A20 Lenham
- At the roundabout, take the 1st exit onto A20 Ashford Road
- At the roundabout, take the 2nd exit onto B2163 Penfold Hill
- Pass the entrance to Leeds Castle
- Turn left onto A274 Maidstone Road
- Continue to follow A274
- Turn right onto New Barn Road
- Continue onto Hawkenbury Road
- Continue onto Headcorn Road
- The Meadows can be found on your right hand side



When you have finished with this leaflet please recycle it.

Cover photograph of Oast House, Staplehurst. Not view from the development. The streetscene shown above has been produced for illustrative purposes only, please check the details of the homes you are interested in with the sales advisor.

Bovis Homes Limited, South East region  
11 Tower View, Kings Hill, West Malling, Kent ME19 4UY. Telephone: 01732 280 400

Produced by the Bovis Homes Graphic Design Department.

ESTFF GD50543 / 08.19

**Bovis  
Homes**





# The Hawthorn

2 bedroom home

[bovishomes.co.uk](http://bovishomes.co.uk)

**Bovis  
Homes** 

# The Hawthorn

## 2 bedroom home

Ground floor	metres	feet / inches
Kitchen	3.73 x 2.92	12' 2" x 9' 6"
Sitting / dining area	4.07 x 4.05	13' 4" x 13' 3"

### First floor

Bedroom 1	4.07 x 2.69	13' 4" x 8' 9"
Bedroom 2	4.07 x 2.82	13' 4" x 9' 3"

### The Hawthorn | X203 01 ESTFF |

This floorplan has been produced for illustrative purposes only. Room sizes shown are between arrow points as indicated on plan. The dimensions have tolerances of + or -50mm and should not be used other than for general guidance. If specific dimensions are required, enquiries should be made to the sales advisor.

\* Windows apply to plot 105 only. Please see sales advisor for further details.

ovn	oven	ffzr	fridge freezer
h	hob	cup'd	cupboard
dw	dishwasher	◀ ▶	measuring points
ws	washing machine space		

Please refer to the sales consultant for specific plot details as the illustrations shown are computer generated impressions of how the property may look so are indicative only. External details or finishes may vary on individual plots and homes may be built in either detached or attached styles depending on the development layout. Exact specifications, window styles and whether a property is left or right handed may differ from plot to plot.

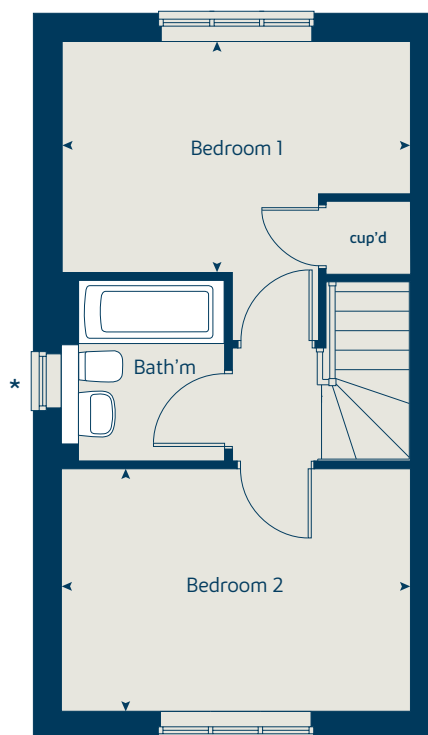
The floorplans shown are not to scale. Measurements are based on the original drawings. Slight variations may occur during construction.

Produced by the Vistry Group Design Studio.

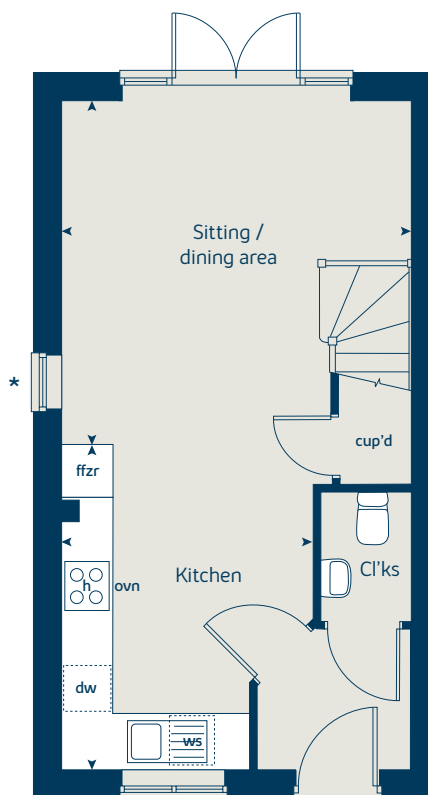
When you have finished with this leaflet please recycle it.

ESTFF GD55790 / 07.20

### First floor



### Ground floor







# The Hazel

3 bedroom home

[bovishomes.co.uk](http://bovishomes.co.uk)

**Bovis  
Homes** 

# The Hazel

## 3 bedroom home

Ground floor	metres	feet / inches
Kitchen / dining room	5.19 x 2.99	17' 0" x 9' 8"
Sitting room	4.18 x 3.66	13' 7" x 12' 0"

### First floor

Bedroom 1	3.54 x 2.97	11' 7" x 9' 8"
Bedroom 2	3.04 x 2.95	9' 10" x 9' 7"
Bedroom 3	3.46 x 2.15	11' 3" x 7' 0"

### The Hazel | X305 P5 ESTFF |

This floorplan has been produced for illustrative purposes only. Room sizes shown are between arrow points as indicated on plan. The dimensions have tolerances of + or -50mm and should not be used other than for general guidance. If specific dimensions are required, enquiries should be made to the sales advisor.

\* Windows apply to selected plots only. Please see sales advisor for further details.

ovn	oven	ldr	larder
h	hob	w	wardrobe
dw	dishwasher	cup'd	cupboard
wm	washing machine	↔	measuring points
ffzr	fridge freezer		

Please refer to the sales consultant for specific plot details as the illustrations shown are computer generated impressions of how the property may look so are indicative only. External details or finishes may vary on individual plots and homes may be built in either detached or attached styles depending on the development layout. Exact specifications, window styles and whether a property is left or right handed may differ from plot to plot.

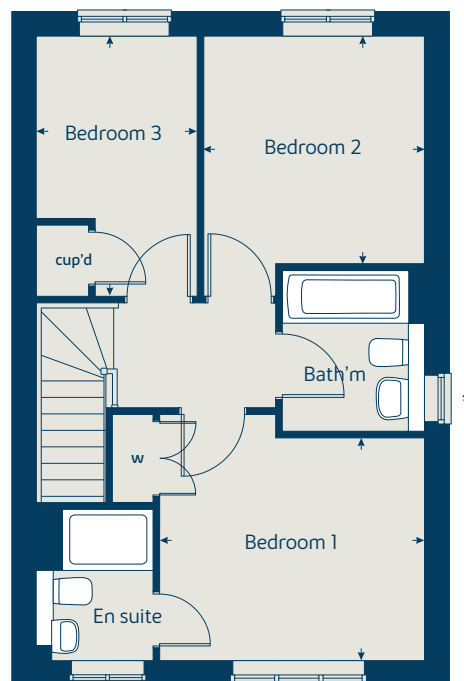
The floorplans shown are not to scale. Measurements are based on the original drawings. Slight variations may occur during construction.

Produced by the Vistry Group Design Studio.

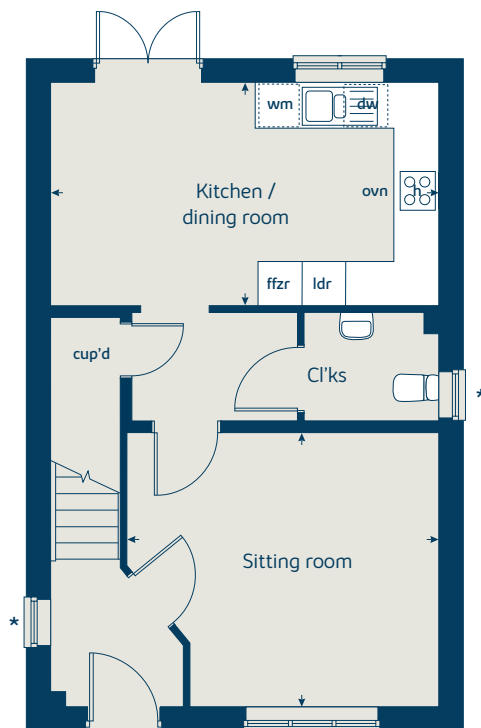
When you have finished with this leaflet please recycle it.

ESTFF GD50543 / 08.19

## First floor



## Ground floor







# The Spruce

3 bedroom home

[bovishomes.co.uk](http://bovishomes.co.uk)

**Bovis  
Homes** 

# The Spruce

## 3 bedroom home

Ground floor	metres	feet / inches
Kitchen	3.23 x 2.69	10' 6" x 8' 9"
Dining area	3.14 x 2.30	10' 3" x 7' 6"
Sitting room	5.53 x 3.32	18' 1" x 10' 10"

First floor	metres	feet / inches
Bedroom 1	3.39 x 3.33	11' 1" x 10' 10"
Bedroom 2	3.61 x 3.18	11' 10" x 10' 5"
Bedroom 3	3.61 x 2.25	11' 10" x 7' 4"

### The Spruce | X307 (IF) P6 ESTFF |

This floorplan has been produced for illustrative purposes only. Room sizes shown are between arrow points as indicated on plan. The dimensions have tolerances of + or -50mm and should not be used other than for general guidance. If specific dimensions are required, enquiries should be made to the sales advisor.

\* Windows apply to selected plots only. Please see sales advisor for further details.

\*\* Utility door applies to selected plots only. Please see sales advisor for further details.

ovn	oven	ffzr	fridge freezer
h	hob	cup'd	cupboard
dw	dishwasher	w	wardrobe
wm	washing machine	↔	measuring points

Please refer to the sales consultant for specific plot details as the illustrations shown are computer generated impressions of how the property may look so are indicative only. External details or finishes may vary on individual plots and homes may be built in either detached or attached styles depending on the development layout. Exact specifications, window styles and whether a property is left or right handed may differ from plot to plot.

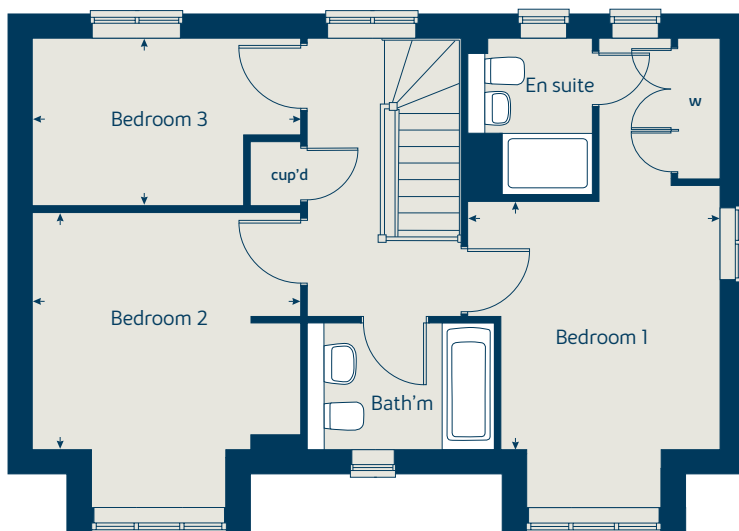
The floorplans shown are not to scale. Measurements are based on the original drawings. Slight variations may occur during construction.

Produced by the Vistry Group Design Studio.

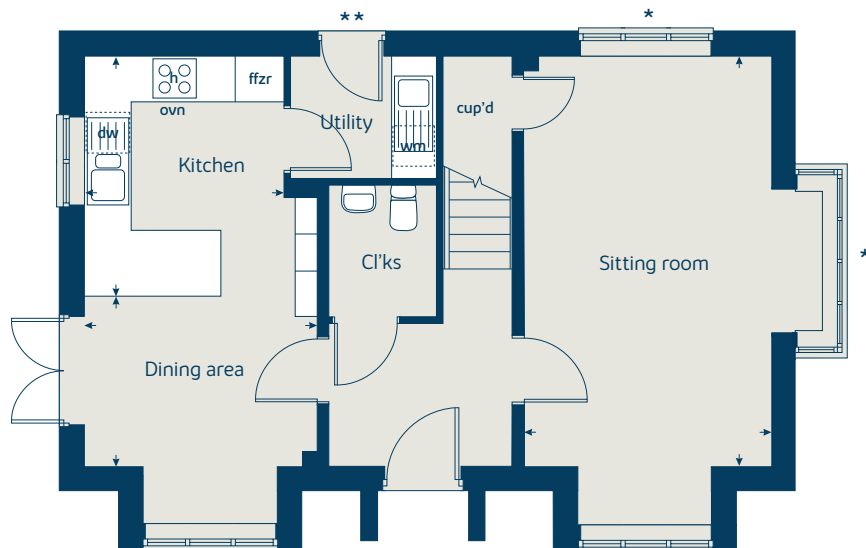
When you have finished with this leaflet please recycle it.

ESTFF GD50543 / 08.19

### First floor



### Ground floor







# The Cypress

3 bedroom home

[bovishomes.co.uk](http://bovishomes.co.uk)

**Bovis  
Homes** 

# The Cypress

## 3 bedroom home

Ground floor	metres	feet / inches
Kitchen / dining area	5.52 x 3.12	18' 1" x 10' 2"
Sitting room	4.33 x 3.40	14' 2" x 11' 1"

### First floor

Bedroom 1	4.09 x 3.28	13' 5" x 10' 9"
Bedroom 2	3.28 x 2.77	10' 9" x 9' 1"
Bedroom 3	3.54 x 2.16	11' 7" x 7' 1"

### The Cypress | X308 (IF) 01 ESTFF |

This floorplan has been produced for illustrative purposes only. Room sizes shown are between arrow points as indicated on plan. The dimensions have tolerances of + or -50mm and should not be used other than for general guidance. If specific dimensions are required, enquiries should be made to the sales advisor.

ovn	oven	ffzr	fridge freezer
h	hob	cup'd	cupboard
dw	dishwasher	w	wardrobe
ws	washing machine space	< >	measuring points

Please refer to the sales consultant for specific plot details as the illustrations shown are computer generated impressions of how the property may look so are indicative only. External details or finishes may vary on individual plots and homes may be built in either detached or attached styles depending on the development layout. Exact specifications, window styles and whether a property is left or right handed may differ from plot to plot.

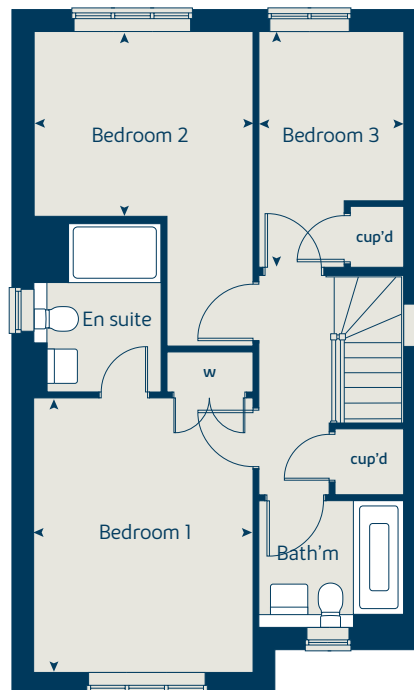
The floorplans shown are not to scale. Measurements are based on the original drawings. Slight variations may occur during construction.

Produced by the Vistry Group Design Studio.

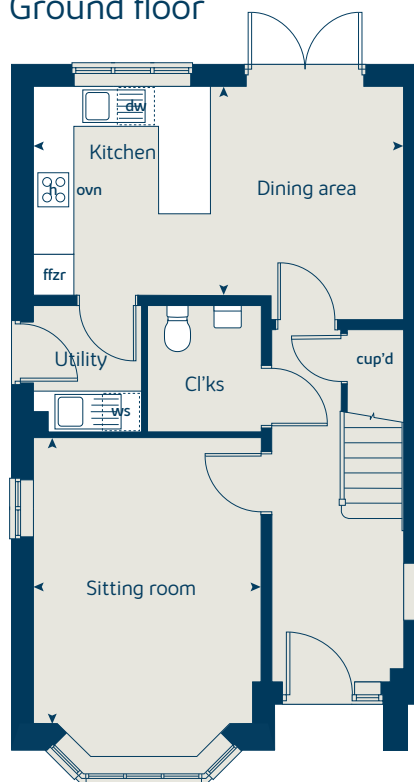
When you have finished with this leaflet please recycle it.

ESTFF GD55790 / 07.20

## First floor



## Ground floor







# The Magnolia

3 bedroom home

[bovishomes.co.uk](http://bovishomes.co.uk)

**Bovis  
Homes** 

# The Magnolia

## 3 bedroom home

Ground floor	metres	feet / inches
Kitchen / dining room	4.74 x 3.37	15' 6" x 11' 0"
Sitting room	3.72 x 3.72	12' 2" x 12' 2"

### First floor

Bedroom 1	3.06 x 2.55	10' 0" x 8' 4"
Bedroom 2	3.00 x 2.55	9' 10" x 8' 4"
Bedroom 3	2.81 x 2.10	9' 2" x 6' 10"

### The Magnolia | X327 01 ESTFF |

This floorplan has been produced for illustrative purposes only. Room sizes shown are between arrow points as indicated on plan. The dimensions have tolerances of + or -50mm and should not be used other than for general guidance. If specific dimensions are required, enquiries should be made to the sales advisor.

ovn	oven	ffzr	fridge freezer
h	hob	ldr	larder
dw	dishwasher	cup'd	cupboard
ws	washing machine space	< >	measuring points

Please refer to the sales consultant for specific plot details as the illustrations shown are computer generated impressions of how the property may look so are indicative only. External details or finishes may vary on individual plots and homes may be built in either detached or attached styles depending on the development layout. Exact specifications, window styles and whether a property is left or right handed may differ from plot to plot.

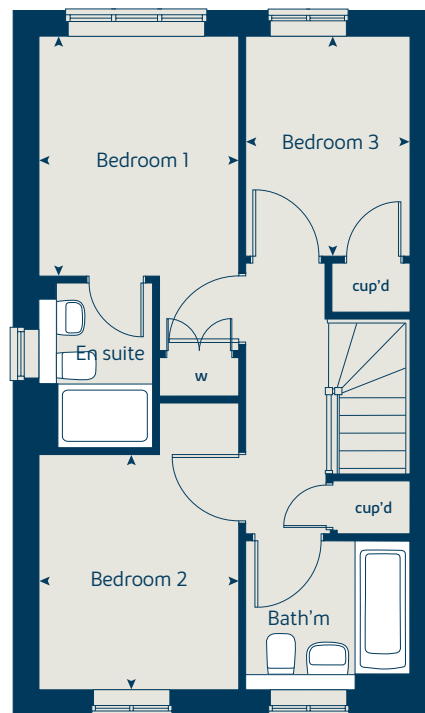
The floorplans shown are not to scale. Measurements are based on the original drawings. Slight variations may occur during construction.

Produced by the Vistry Group Design Studio.

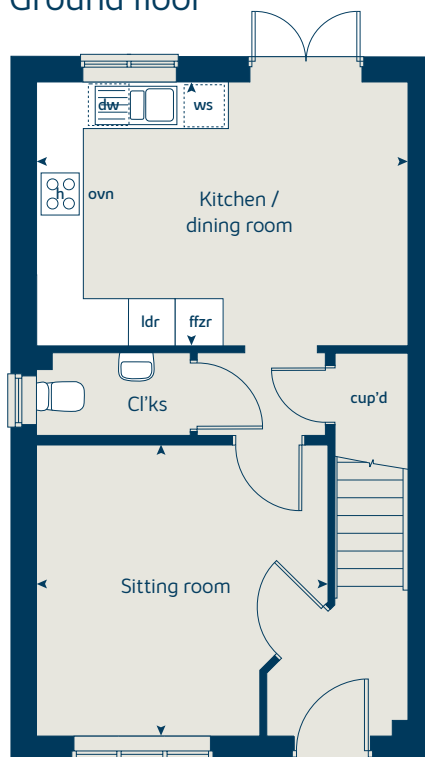
When you have finished with this leaflet please recycle it.

ESTFF GD55790 / 07.20

### First floor



### Ground floor







# The Aspen

4 bedroom home

[bovishomes.co.uk](http://bovishomes.co.uk)

**Bovis  
Homes** 

# The Aspen

## 4 bedroom home

Ground floor	metres	feet / inches
Kitchen / dining area	7.77 x 3.37	25' 6" x 11' 0"
Sitting room	5.04 x 3.39	16' 6" x 11' 1"
Study	2.01 x 2.01	6' 7" x 6' 7"

First floor	metres	feet / inches
Bedroom 1	3.92 x 3.00	12' 8" x 9' 9"
Bedroom 2	3.75 x 3.10	12' 13" x 10' 2"
Bedroom 3	4.07 x 2.45	13' 4" x 8' 0"
Bedroom 4	3.61 x 2.45	11' 10" x 8' 0"

### The Aspen | X414 (IF) P6 ESTFF |

This floorplan has been produced for illustrative purposes only. Room sizes shown are between arrow points as indicated on plan. The dimensions have tolerances of + or -50mm and should not be used other than for general guidance. If specific dimensions are required, enquiries should be made to the sales advisor.

\* Window applies to selected plots only. The position differs from plot to plot. Please see sales advisor for further details.

ovn	oven	ldr	larder
h	hob	w	wardrobe
dw	dishwasher	cup'd	cupboard
wm	washing machine	↔	measuring points
ffzr	fridge freezer		

Please refer to the sales consultant for specific plot details as the illustrations shown are computer generated impressions of how the property may look so are indicative only. External details or finishes may vary on individual plots and homes may be built in either detached or attached styles depending on the development layout. Exact specifications, window styles and whether a property is left or right handed may differ from plot to plot.

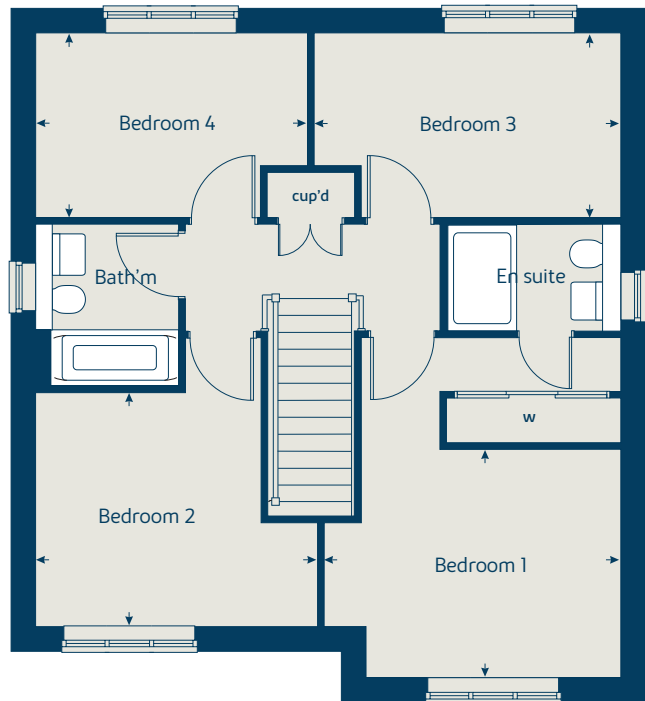
The floorplans shown are not to scale. Measurements are based on the original drawings. Slight variations may occur during construction.

Produced by the Vistry Group Design Studio.

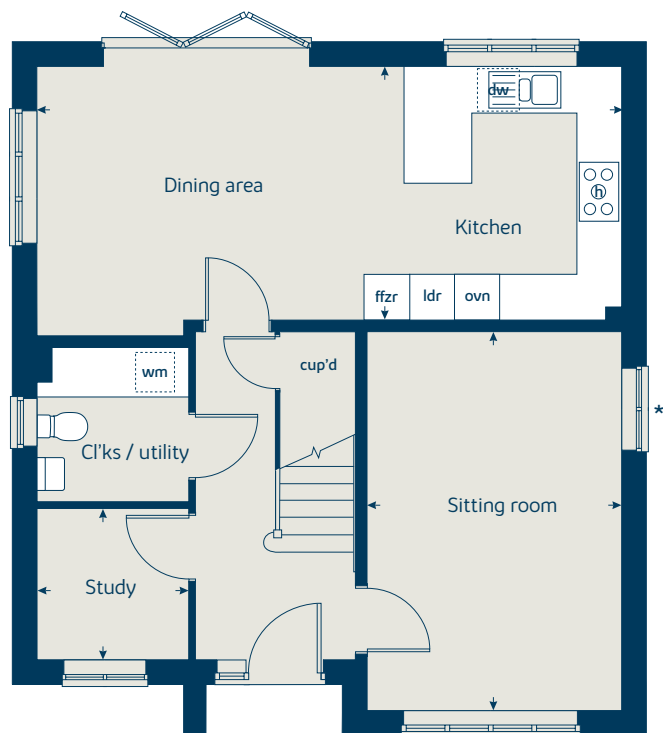
When you have finished with this leaflet please recycle it.

ESTFF GD50543 / 08.19

### First floor



### Ground floor







# The Juniper

4 bedroom home

[bovishomes.co.uk](http://bovishomes.co.uk)

**Bovis  
Homes** 

# The Juniper

## 4 bedroom home

Ground floor	metres	feet / inches
Kitchen / dining / family area	7.21 x 3.51	23' 7" x 11' 6"
Sitting room	4.55 x 3.04	14' 7" x 10' 0"
Study	2.34 x 1.85	7' 8" x 6' 0"

### First floor

Bedroom 1	4.66 x 3.05	15' 3" x 10' 0"
Bedroom 2	2.97 x 2.84	9' 8" x 9' 3"
Bedroom 3	3.60 x 2.38	11' 9" x 7' 9"
Bedroom 4	3.51 x 2.38	11' 6" x 7' 9"

### The Juniper | X412 P4 ESTFF |

This floorplan has been produced for illustrative purposes only. Room sizes shown are between arrow points as indicated on plan. The dimensions have tolerances of + or -50mm and should not be used other than for general guidance. If specific dimensions are required, enquiries should be made to the sales advisor.

ovn	oven	ffzr	fridge freezer
h	hob	w	wardrobe
dw	dishwasher	cup'd	cupboard
wm	washing machine	↔	measuring points
ldr	larder		

Please refer to the sales consultant for specific plot details as the illustrations shown are computer generated impressions of how the property may look so are indicative only. External details or finishes may vary on individual plots and homes may be built in either detached or attached styles depending on the development layout. Exact specifications, window styles and whether a property is left or right handed may differ from plot to plot.

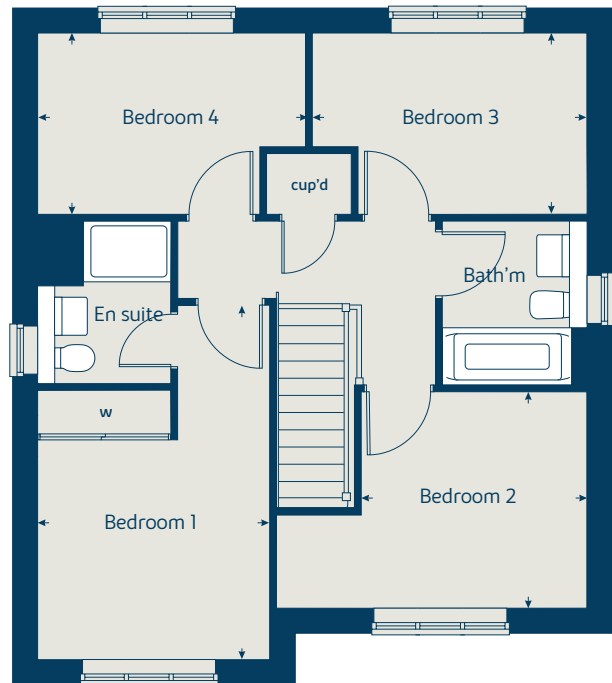
The floorplans shown are not to scale. Measurements are based on the original drawings. Slight variations may occur during construction.

Produced by the Vistry Group Design Studio.

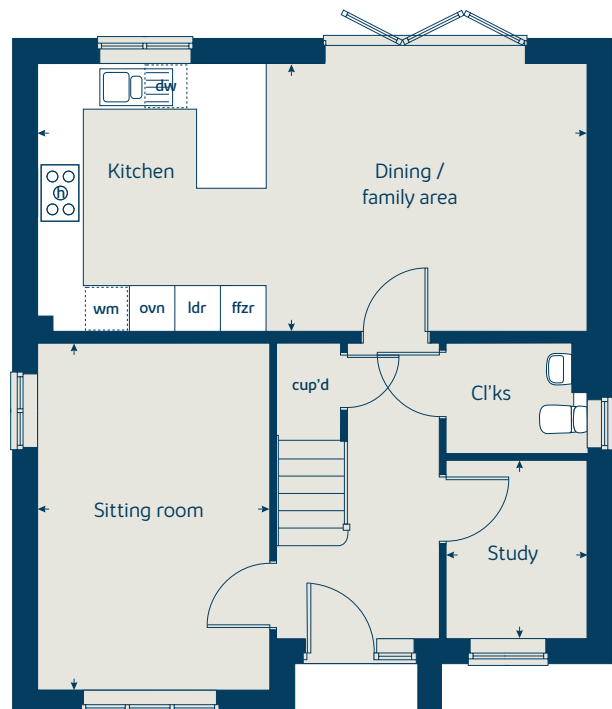
When you have finished with this leaflet please recycle it.

ESTFF GD50543 / 08.19

### First floor



### Ground floor







# The Chestnut

4 bedroom home

[bovishomes.co.uk](http://bovishomes.co.uk)

**Bovis  
Homes** 

# The Chestnut

## 4 bedroom home

Ground floor	metres	feet / inches
Kitchen	4.03 x 3.04	13' 2" x 9' 11"
Dining / family area	4.59 x 2.85	15' 0" x 9' 4"
Sitting room	4.98 x 3.40	16' 4" x 11' 1"
Study	3.40 x 1.81	11' 1" x 5' 11"

### First floor

Bedroom 1	3.24 x 3.00	10' 7" x 9' 8"
Bedroom 2	3.48 x 3.36	11' 5" x 11' 0"
Bedroom 3	3.25 x 2.35	10' 7" x 7' 8"
Bedroom 4	3.42 x 2.34	11' 2" x 7' 8"

### The Chestnut | X413 P5 ESTFF |

This floorplan has been produced for illustrative purposes only. Room sizes shown are between arrow points as indicated on plan. The dimensions have tolerances of + or -50mm and should not be used other than for general guidance. If specific dimensions are required, enquiries should be made to the sales advisor.

ovn	oven	ffzr	fridge freezer
h	hob	w	wardrobe
dw	dishwasher	cup'd	cupboard
wm	washing machine	↔	measuring points
ldr	larder		

Please refer to the sales consultant for specific plot details as the illustrations shown are computer generated impressions of how the property may look so are indicative only. External details or finishes may vary on individual plots and homes may be built in either detached or attached styles depending on the development layout. Exact specifications, window styles and whether a property is left or right handed may differ from plot to plot.

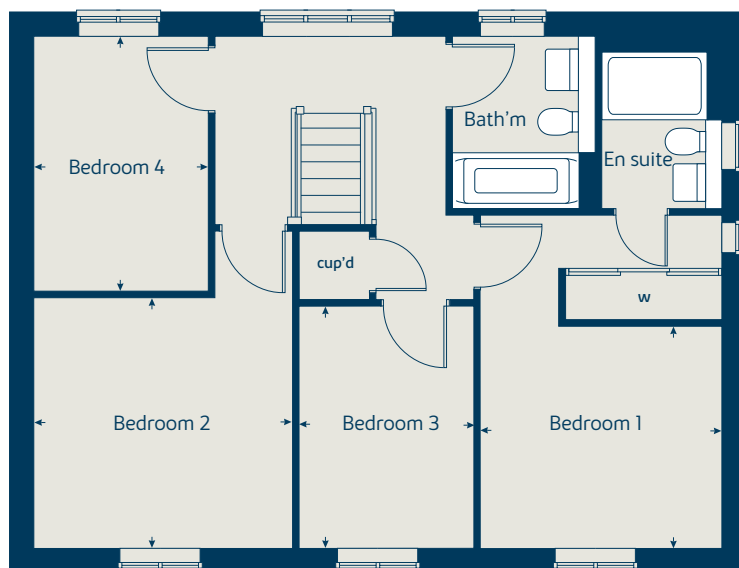
The floorplans shown are not to scale. Measurements are based on the original drawings. Slight variations may occur during construction.

Produced by the Vistry Group Design Studio.

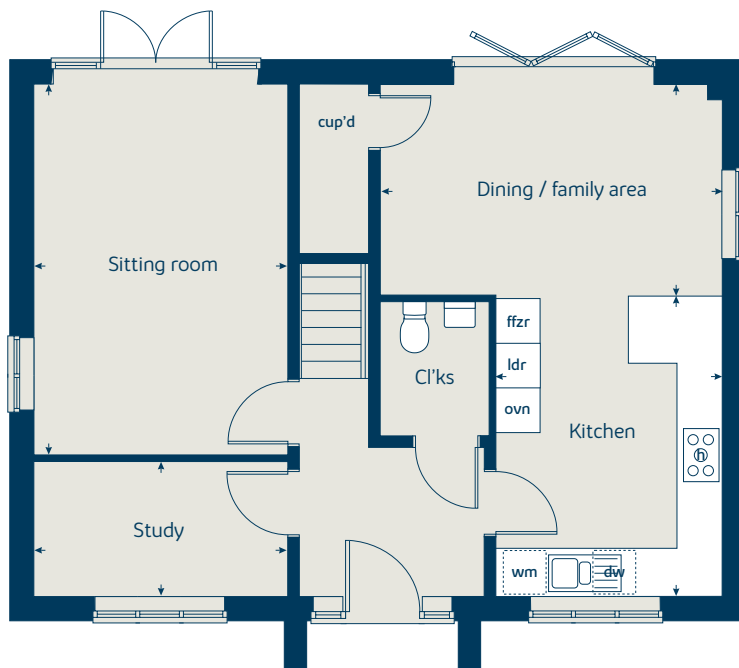
When you have finished with this leaflet please recycle it.

ESTFF GD50543 / 08.19

### First floor



### Ground floor







# The Blackthorn

4 bedroom home

[bovishomes.co.uk](http://bovishomes.co.uk)

**Bovis  
Homes** 

# The Blackthorn

## 4 bedroom home

Ground floor	metres	feet / inches
Kitchen / dining area	7.77 x 3.37	25' 6" x 11' 0"
Sitting room	5.04 x 3.39	16' 6" x 11' 1"
Study	2.68 x 2.01	8' 8" x 6' 6"

### First floor

Bedroom 1	3.94 x 2.98	12' 11" x 9' 9"
Bedroom 2	3.78 x 3.75	12' 4" x 12' 3"
Bedroom 3	4.07 x 2.45	13' 4" x 8' 0"
Bedroom 4	3.61 x 2.45	11' 10" x 8' 0"

### The Blackthorn | SE4040 ESTFF |

This floorplan has been produced for illustrative purposes only. Room sizes shown are between arrow points as indicated on plan. The dimensions have tolerances of + or -50mm and should not be used other than for general guidance. If specific dimensions are required, enquiries should be made to the sales advisor.

\* Window applies to selected plots only. Please see sales advisor for further details.

ovn	oven	ldr	larder
h	hob	w	wardrobe
dw	dishwasher	cup'd	cupboard
wm	washing machine	↔	measuring points
ffzr	fridge freezer		

Please refer to the sales consultant for specific plot details as the illustrations shown are computer generated impressions of how the property may look so are indicative only. External details or finishes may vary on individual plots and homes may be built in either detached or attached styles depending on the development layout. Exact specifications, window styles and whether a property is left or right handed may differ from plot to plot.

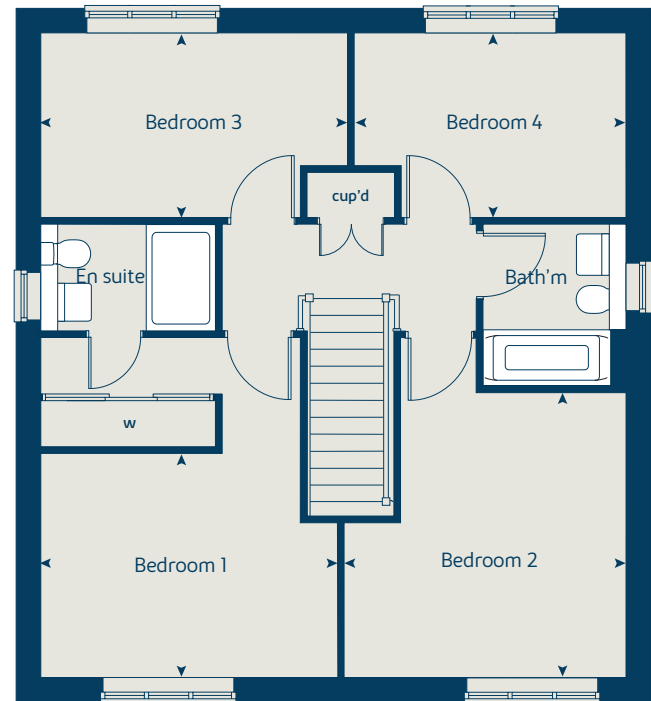
The floorplans shown are not to scale. Measurements are based on the original drawings. Slight variations may occur during construction.

Produced by the Vistry Group Design Studio.

When you have finished with this leaflet please recycle it.

ESTFF GD60084 / 05.21

### First floor



### Ground floor







# The Birch

5 bedroom home

[bovishomes.co.uk](http://bovishomes.co.uk)

**Bovis  
Homes** 

# The Birch

## 5 bedroom home

Ground floor	metres	feet / inches
Kitchen	4.34 x 3.65	14' 3" x 12' 0"
Family / dining area	5.42 x 3.51	17' 9" x 11' 6"
Sitting room	4.17 x 3.61	13' 8" x 11' 10"
Study / dining room	3.41 x 3.00	11' 2" x 9' 10"

First floor	metres	feet / inches
Bedroom 1	3.62 x 3.51	11' 10" x 11' 6"
Bedroom 2	3.92 x 2.90	12' 9" x 9' 6"
Bedroom 3	3.06 x 2.82	10' 0" x 9' 3"
Bedroom 4	2.98 x 2.83	9' 9" x 9' 3"
Bedroom 5	3.00 x 2.83	9' 10" x 9' 3"

### The Birch | XS18 (IF) 01 ESTFF |

This floorplan has been produced for illustrative purposes only. Room sizes shown are between arrow points as indicated on plan. The dimensions have tolerances of + or -50mm and should not be used other than for general guidance. If specific dimensions are required, enquiries should be made to the sales advisor.

ovn	oven	ldr	larder
h	hob	cyl	hot water cylinder
dw	dishwasher	w	wardrobe
ws	washing machine space	cup'd	cupboard
ffzr	fridge freezer	◀ ▶	measuring points

Please refer to the sales consultant for specific plot details as the illustrations shown are computer generated impressions of how the property may look so are indicative only. External details or finishes may vary on individual plots and homes may be built in either detached or attached styles depending on the development layout. Exact specifications, window styles and whether a property is left or right handed may differ from plot to plot.

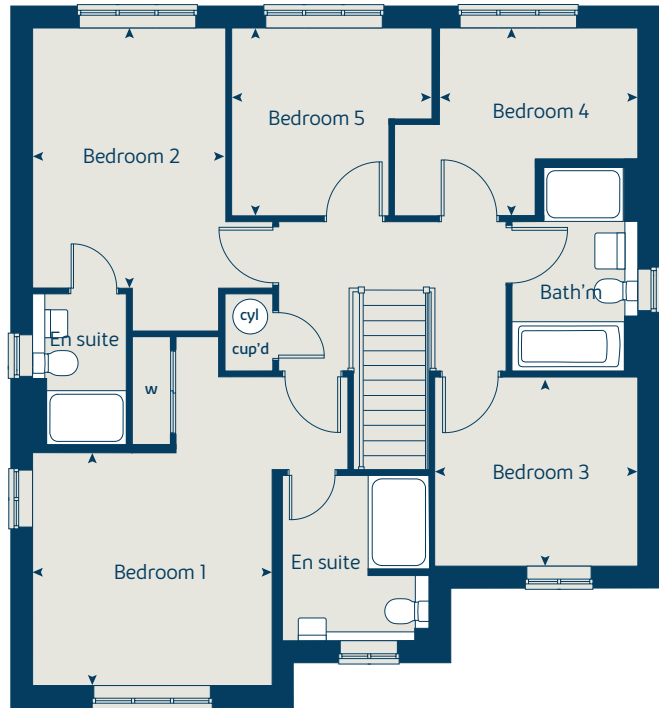
The floorplans shown are not to scale. Measurements are based on the original drawings. Slight variations may occur during construction.

Produced by the Vistry Group Design Studio.

When you have finished with this leaflet please recycle it.

ESTFF GD55790 / 07.20

### First floor



### Ground floor







# The Yew

5 bedroom home

[bovishomes.co.uk](http://bovishomes.co.uk)

**Bovis  
Homes** 

# The Yew

## 5 bedroom home

Ground floor	metres	feet / inches
Kitchen	3.71 x 3.17	12' 2" x 10' 4"
Family / dining area	4.74 x 3.17	15' 6" x 10' 4"
Sitting room	4.70 x 3.17	15' 4" x 10' 4"
Study	3.17 x 1.76	10' 4" x 5' 9"

### First floor

Bedroom 1	4.18 x 3.73	13' 8" x 12' 2"
Bedroom 3	4.20 x 3.23	13' 8" x 10' 7"
Bedroom 5	2.88 x 2.27	9' 5" x 7' 5"

### Second floor

Bedroom 2	5.32 x 3.23	17' 5" x 10' 6"
Bedroom 4	3.73 x 3.12	12' 2" x 10' 3"

### The Yew | X519 (IF) P5 ESTFF |

This floorplan has been produced for illustrative purposes only. Room sizes shown are between arrow points as indicated on plan. The dimensions have tolerances of + or -50mm and should not be used other than for general guidance. If specific dimensions are required, enquiries should be made to the sales advisor.

ovn	oven	ldr	larder
h	hob	w	wardrobe
dw	dishwasher	cup'd	cupboard
wm	washing machine	cyl	hot water cylinder
ffzr	fridge freezer	↔	measuring points

Please refer to the sales consultant for specific plot details as the illustrations shown are computer generated impressions of how the property may look so are indicative only. External details or finishes may vary on individual plots and homes may be built in either detached or attached styles depending on the development layout. Exact specifications, window styles and whether a property is left or right handed may differ from plot to plot.

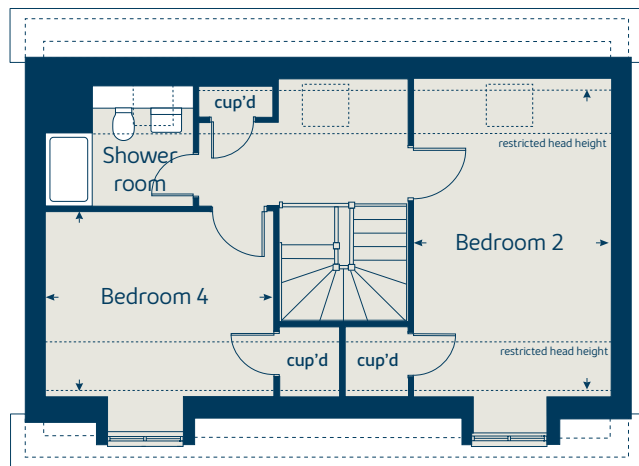
The floorplans shown are not to scale. Measurements are based on the original drawings. Slight variations may occur during construction.

Produced by the Vistry Group Design Studio.

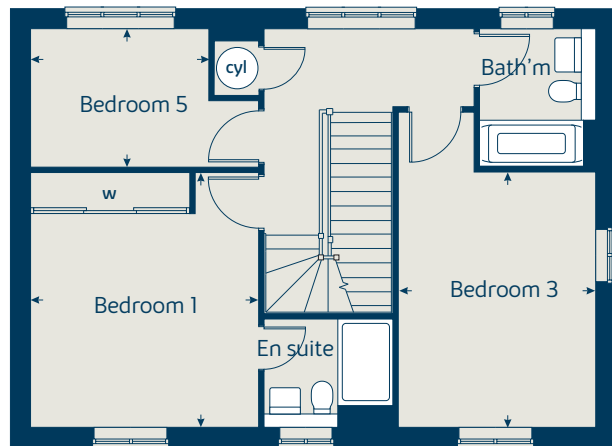
When you have finished with this leaflet please recycle it.

ESTFF GD50543 / 08.19

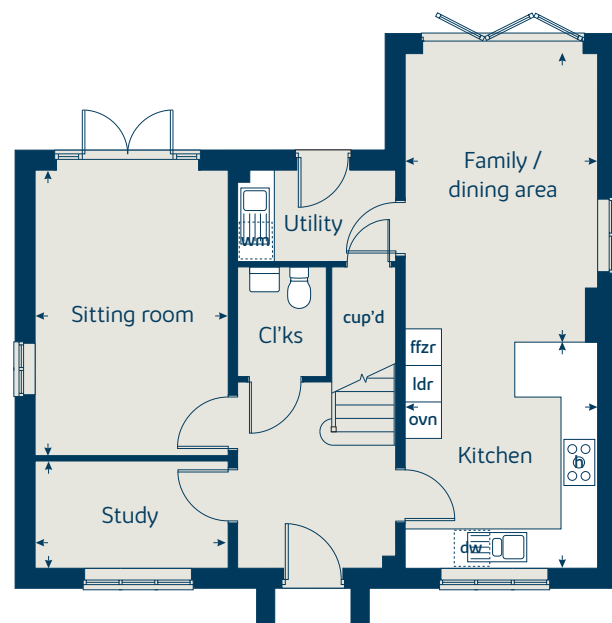
## Second floor



## First floor



## Ground floor







# The Meadows

Staplehurst

Development plan

[bovishomes.co.uk](http://bovishomes.co.uk)

**Bovis  
Homes** 



# The Meadows

Staplehurst



## 2 bedroom home

The Hawthorn

## 3 bedroom home

The Hazel

The Spruce

The Magnolia

The Cypress

## 5 bedroom home

The Yew

The Birch

## 4 bedroom home

The Chestnut

The Aspen

The Juniper

The Blackthorn

Affordable housing

Car port

Pergola

bridge

ditch

visitor parking space

substation

bin collection point



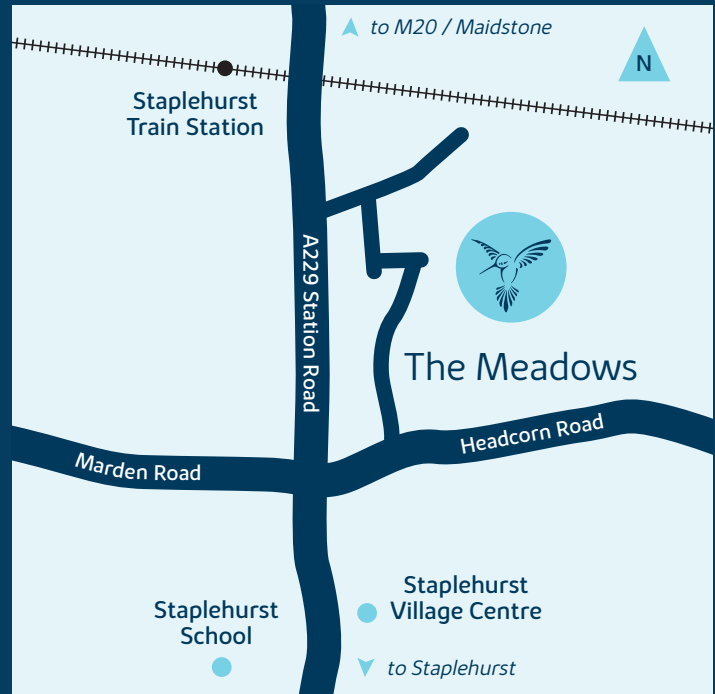
# The Meadows

Headcorn Road,  
Staplehurst TN12 0BS

01580 445013

## From M20

- Leave the M20 at junction 8 signposted A20 Lenham
- At the roundabout, take the 1st exit onto A20 Ashford Road
- At the roundabout, take the 2nd exit onto B2163 Penfold Hill
- Pass the entrance to Leeds Castle
- Turn left onto A274 Maidstone Road
- Continue to follow A274
- Turn right onto New Barn Road
- Continue onto Hawkenbury Road
- Continue onto Headcorn Road
- The Meadows can be found on your right hand side



When you have finished with this leaflet please recycle it.

This plan has been produced for home identification purposes only and may be subject to change. Please check the details of your chosen plot and house type with the sales consultant. Development layout plan correct at time of going to print.

Bovis Homes Limited, Kent region  
11 Tower View, Kings Hill, West Malling, Kent ME19 4UY. Telephone: 01732 280 400

Produced by the Vistry Group Design Studio.  
ESTFF DS00607 / 12.21



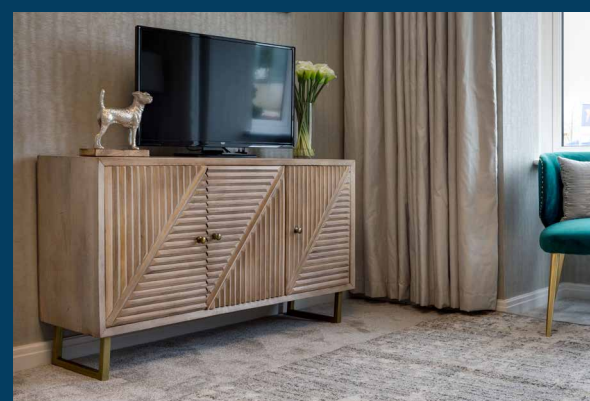
## So much choice...

Part of the excitement of buying a new home is the thrill of being the first person to live in the property and having a brand new contemporary kitchen and modern bathroom. Our premium brand partners ensure that all of our fixtures and fittings comply with the latest Government building regulations and only branded appliances are installed in your new home.

Once you know what specification comes included, you'll have a choice from our specially selected tiles for your kitchen and bathrooms, as well as kitchen worktops and cupboard doors. You can then use the Bovis Homes **Select** brochure to add the finishing touches to your home to make it extra special for you!

From personalising your bathrooms with stunning ceramics, or adding smooth sliding wardrobes to your master bedroom, there are a wide range of additional options and upgrades available.

The availability of items is subject to the stage of build, and can vary by development and house type. Our sales consultants will be happy to provide guidance.



## The Meadows Staplehurst



When you have finished with this leaflet please recycle it.

The specification shown in this leaflet is correct at the time of going to press. Bovis Homes is continually reviewing and updating the specification on all housetypes and therefore reserves the right to change specification details. Photographs depict a typical Bovis Homes interior and may include optional upgrades. For full details regarding current specification and finishes, for the plots you are interested in, please refer to our sales consultant.

Produced by the Vistry Group Design Department.

ESTFF DS00948 / 01.22



Specification

[bovishomes.co.uk](http://bovishomes.co.uk)





# The Meadows

## Staplehurst

Use this guide to see what features are included in your new home. Your sales consultant will be happy to discuss the **Select** range of extras available.



**Kitchen**

2 bedroom  
The Hawthorn

3 bedroom  
The Magnolia  
The Hazel  
The Cypress  
The Spruce

4 bedroom  
The Juniper  
The Chestnut  
The Aspen  
The Blackthorn

5 bedroom  
The Birch  
The Yew

	2 bedroom The Hawthorn	3 bedroom The Magnolia The Hazel The Cypress The Spruce	4 bedroom The Juniper The Chestnut The Aspen The Blackthorn	5 bedroom The Birch The Yew
Choice of Standard fitted kitchen (doors and worktops)*	■	■ ■ ■ ■	■ ■ ■ ■	
Choice of Premium fitted kitchen (doors and worktops)*				■ ■
Stainless steel sink and drainer (single bowl) with chrome mixer tap	■			
Stainless steel sink and drainer (single and a half bowl) with chrome mixer tap		■ ■ ■ ■		
Stainless steel sink and drainer (single bowl) with chrome mixer tap in utility				■ ■
Hob (60cm) with built-in single oven (high level or under), with glass splashback and curved glass chimney hood	■	■ ■ ■ ■		
Hob (75cm) with built-in double oven (high level or under), with glass splashback and curved glass chimney hood			■ ■ ■ ■	
Hob (75cm) with built-in double oven at high level, with glass splashback and stainless steel pyramid chimney hood				■ ■
Pre-wired for under unit lighting option	■	■ ■ ■ ■		
LED under unit flexible strip lighting			■ ■ ■ ■	■ ■
Integrated 50 / 50 fridge freezer	■	■ ■ ■ ■	■ ■ ■ ■	■ ■
Integrated dishwasher	■	■ ■ ■ ■	■ ■ ■ ■	■ ■
Space for washing machine with plumbing and electrics in utility				■ ■
Space for washing machine with plumbing and electrics in kitchen	■	■ ■	■ ■	
Recessed downlighting	■	■ ■ ■ ■	■ ■ ■ ■	■ ■

### Bathrooms and en suite(s)

	2 bedroom The Hawthorn	3 bedroom The Magnolia The Hazel The Cypress The Spruce	4 bedroom The Juniper The Chestnut The Aspen The Blackthorn	5 bedroom The Birch The Yew
Ideal Standard contemporary white sanitary ware suite	■	■ ■ ■ ■	■ ■ ■ ■	■ ■
Ideal Standard close coupled WC to cloakroom	■	■ ■ ■ ■	■ ■ ■ ■	■ ■
Ideal Standard low profile shower tray with glass enclosure		■ ■ ■ ■	■ ■ ■ ■	■ ■
Handheld hair wash attachment		■ ■ ■ ■	■ ■ ■ ■	■ ■
Shower over the bath	■			
En suite to bedroom 1		■ ■ ■ ■	■ ■ ■ ■	■ ■
Choice of Standard Porcelanosa wall tiling (half-height to walls with fitted sanitary ware, and full-height around bath area)*	■			
Choice of Standard Porcelanosa wall tiling (half-height to walls with fitted sanitary ware, half-height over bath, and full-height to shower cubicle)*		■ ■ ■ ■	■ ■ ■ ■	
Choice of Premium Porcelanosa wall tiling (half-height to walls with fitted sanitary ware, half-height over bath, and full-height to shower cubicle)*				■ ■
Choice of Standard Porcelanosa floor tiling	■	■ ■ ■ ■	■ ■ ■ ■	
Choice of Premium Porcelanosa floor tiling				■ ■
Shaver socket / toothbrush charger to bathroom and main en suite	■	■ ■ ■ ■	■ ■ ■ ■	■ ■
White downlighters to bathroom and en suite(s)	■	■ ■ ■ ■	■ ■ ■ ■	■ ■
Chrome towel warmer in bathroom and en suite(s)	■	■ ■ ■ ■	■ ■ ■ ■	■ ■

**Bedrooms**

2 bedroom  
The Hawthorn

3 bedroom  
The Magnolia  
The Hazel  
The Cypress  
The Spruce

4 bedroom  
The Juniper  
The Chestnut  
The Aspen  
The Blackthorn

5 bedroom  
The Birch  
The Yew

	2 bedroom The Hawthorn	3 bedroom The Magnolia The Hazel The Cypress The Spruce	4 bedroom The Juniper The Chestnut The Aspen The Blackthorn	5 bedroom The Birch The Yew
Built-in wardrobe(s) to bedroom 1 (with shelf and rail)		■ ■ ■ ■		
Built-in wardrobe(s) to bedroom 1 with sliding doors (with shelf and rail)			■ ■ ■ ■	■ ■

### Doors and Windows

	2 bedroom The Hawthorn	3 bedroom The Magnolia The Hazel The Cypress The Spruce	4 bedroom The Juniper The Chestnut The Aspen The Blackthorn	5 bedroom The Birch The Yew
Front door with multi-point security locking system and security chain	■	■ ■ ■ ■	■ ■ ■ ■	■ ■
PVCu double glazing to windows	■	■ ■ ■ ■	■ ■ ■ ■	■ ■
Double glazed PVCu French doors	■	■ ■ ■ ■		
Powder coated aluminium double glazed bi-fold doors			■ ■ ■ ■	■ ■
White painted four-panel internal doors with chrome lever handles	■	■ ■ ■ ■	■ ■ ■ ■	■ ■
Paving outside French / bi-fold door and path to garage personnel door (where applicable)	■	■ ■ ■ ■	■ ■ ■ ■	■ ■

### General

	2 bedroom The Hawthorn	3 bedroom The Magnolia The Hazel The Cypress The Spruce	4 bedroom The Juniper The Chestnut The Aspen The Blackthorn	5 bedroom The Birch The Yew
White painted walls and smooth white ceilings	■	■ ■ ■ ■	■ ■ ■ ■	■ ■
Combined usb / double sockets in kitchen and bedroom 1	■	■ ■ ■ ■	■ ■ ■ ■	■ ■
Multi-media point in sitting room	■	■ ■ ■ ■	■ ■ ■ ■	■ ■
TV point to bedroom 1 and family room (where applicable)	■	■ ■ ■ ■	■ ■ ■ ■	■ ■
Master telephone socket (plus to study where shown)	■	■ ■ ■ ■	■ ■ ■ ■	■ ■
Gas central heating with wall mounted combi-boiler, programme selector and room thermostat(s)	■	■ ■ ■ ■	■ ■ ■ ■	
Gas central heating with wall mounted boiler and separate hot water cylinder, programme selector and room thermostat(s)				■ ■
Thermostatic valves to radiators (with the exception of rooms with separate thermostat control)	■	■ ■ ■ ■	■ ■ ■ ■	■ ■
External light to front porch, and wiring for rear door light	■	■ ■ ■ ■	■ ■ ■ ■	■ ■
Mains wired smoke detectors with battery back-up	■	■ ■ ■ ■	■ ■ ■ ■	■ ■
Power and lighting to 'on plot' garage (where applicable)	■	■ ■ ■ ■	■ ■ ■ ■	■ ■
Enclosed rear garden, and garden gate (where applicable)	■	■ ■ ■ ■	■ ■ ■ ■	■ ■
Turf to rear gardens and external tap			■ ■ ■ ■	■ ■
Landscaped front gardens	■	■ ■ ■ ■	■ ■ ■ ■	■ ■
NHBC Buildmark cover	■	■ ■ ■ ■	■ ■ ■ ■	■ ■
First two years' customer service support from Bovis Homes	■	■ ■ ■ ■	■ ■ ■ ■	■ ■

■ Fitted as standard - included in the property  
\* Subject to stage of construction