



# KINGSBOURNE

NANTWICH



A development of 3, 4 and 5 bedroom homes

[dwh.co.uk](http://dwh.co.uk) 0333 3558 480



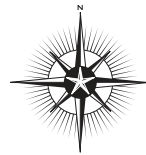
**DAVID WILSON HOMES**  
WHERE QUALITY LIVES

# KINGSBOURNE

The perfect location for those seeking convenience and beauty

You will find a collection of 3, 4 & 5 bedroom homes at our impressive Kingsbourne development in the lovely market town of Nantwich. So if you are searching for your first home, a bigger home or may be something more manageable, come along and have a look.




Everything Nantwich has to offer is within walking distance and the transport links are great for that daily commute. Kingsbourne is situated on the periphery of town, set in rolling Cheshire countryside with unspoiled views and offers country walks in each direction.



## Waterode, Nantwich, Cheshire CW5 5BS


### KEY - Plots 1 - 129

- |  |  |   |   |
|--|--|---|---|
|   | <b>The Chichester/Cherwell</b><br>2 bedroom apartments |    | <b>The Shelbourne</b><br>4 bedroom home |
|   | <b>Kings House</b><br>2 bedroom apartments             |    | <b>The Irving</b><br>4 bedroom home     |
|   | <b>The Wincham</b><br>2 bedroom home                   |    | <b>The Hertford</b><br>4 bedroom home   |
|   | <b>The Stevenson</b><br>2 bedroom home                 |    | <b>The Finsbury</b><br>4 bedroom home   |
|   | <b>The Archford</b><br>3 bedroom home                  |    | <b>The Bradgate</b><br>4 bedroom home   |
|   | <b>The Hadley</b><br>3 bedroom home                    |    | <b>The Avondale</b><br>4 bedroom home   |
|   | <b>The Chamwood</b><br>3 bedroom home                  |    | <b>The Millford</b><br>4 bedroom home   |
|  | <b>The Heske th</b><br>3 bedroom home                  |    | <b>The Mitchell</b><br>4 bedroom home   |
|  |  |   | <b>The Winstone</b><br>4 bedroom home   |
|  |  |  | <b>The Drummond</b><br>4 bedroom home   |
|  |  |  | <b>The Ingleby</b><br>4 bedroom home    |

- |   |                                      |
|---|--------------------------------------|
|   | <b>The Emerson</b><br>5 bedroom home |
|  | <b>The Henley</b><br>5 bedroom home  |
|  | <b>The Formby</b><br>5 bedroom home  |

 **Affordable Homes**

 Plots 46-54 & 56-103 (DWH -5 House Type Range)

 Plots 1-45, 55, 104-149 & 118-129 (DWH -7 House Type Range)



Waterlode, Nantwich, Cheshire CW5 5BS

**KEY - Plots 150 - 211**

- |   |   |   |                                       |
|---|---|---|---------------------------------------|
|    | <b>The Archford</b><br>3 bedroom home   |    | <b>The Avondale</b><br>4 bedroom home |
|    | <b>The Hadley</b><br>3 bedroom home     |    | <b>The Millford</b><br>4 bedroom home |
|    | <b>The Selwood</b><br>3 bedroom home    |    | <b>The Mitchell</b><br>4 bedroom home |
|    | <b>The Kennett</b><br>3 bedroom home    |    | <b>The Winstone</b><br>4 bedroom home |
|    | <b>The Shelbourne</b><br>4 bedroom home |    | <b>The Drummond</b><br>4 bedroom home |
|    | <b>The Ingleby</b><br>4 bedroom home    |    | <b>The Emerson</b><br>5 bedroom home  |
|   | <b>The Hertford</b><br>4 bedroom home   |   | <b>The Henley</b><br>5 bedroom home   |
|  | <b>The Finsbury</b><br>4 bedroom home   |   |                                       |
|  | <b>The Badgate</b><br>4 bedroom home    |  | <b>Affordable Homes</b>               |

 Plots 150 - 211 (Urban Village House Types)



# THE STEVENSON

TWO BEDROOM MID-TERRACED HOME



Individual plots may vary, please speak to the Sales Adviser



An attractive first floor apartment with an integral garage below, The Stevenson provides flexible space for modern living. The spacious open-plan lounge has a dining area while the separate kitchen has room

for a breakfast table. As well as a good-sized master bedroom, there is also a second double bedroom and a bathroom. Windows are featured to the front of this apartment, while the rear has roof lights.



DAVID WILSON HOMES

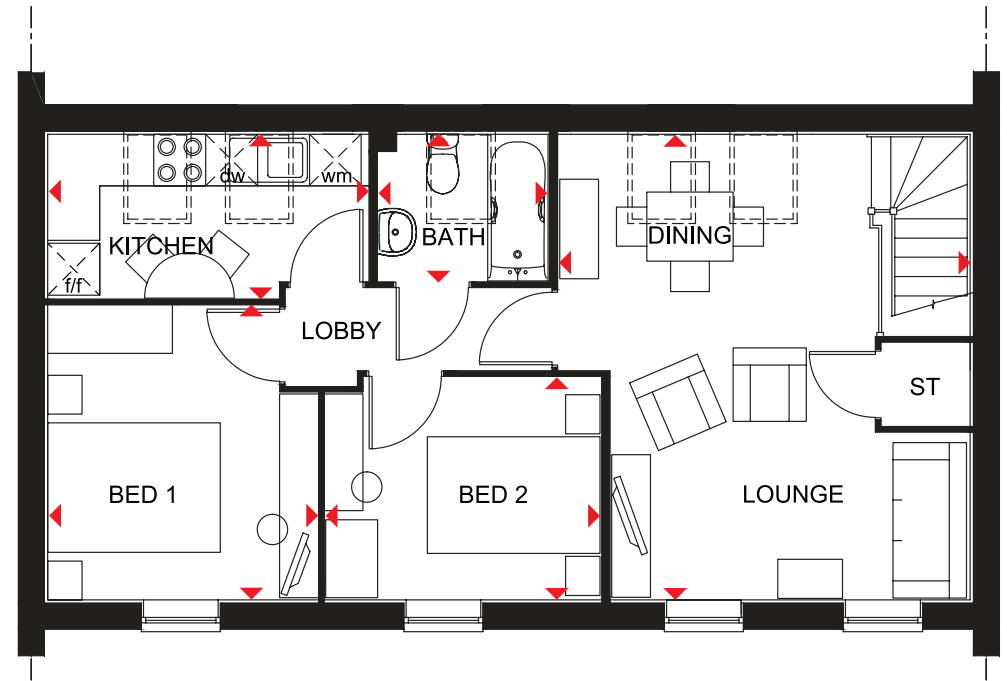
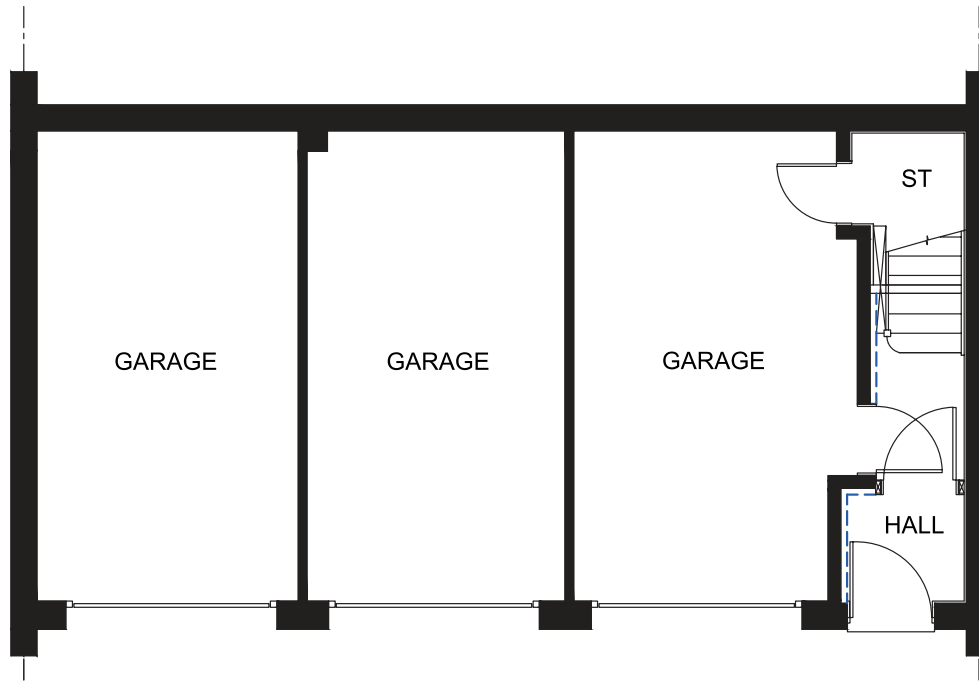
WHERE QUALITY LIVES

# THE STEVENSON

TWO BEDROOM MID-TERRACED HOME

## Key

ST	Store	dw	Dishwasher space
f/f	Fridge/freezer space	◀▶	Dimension location
wm	Washing machine space		



### First Floor

Lounge/Dining	5389 x 4764 mm	17'8" x 15'8"
Kitchen	3709 x 1897 mm	12'2" x 6'3"
Bedroom 1	3403 x 3123 mm	11'2" x 10'3"
Bedroom 2	2573 x 3188 mm	8'5" x 10'5"
Bathroom	1965 x 1699 mm	6'5" x 5'7"

We are on the New Homes Quality Code register of registered developers. "We" refers to the Barratt Developments PLC group brands including Barratt London, Barratt Homes and David Wilson Homes. All images used are for illustrative purposes. These and the dimensions given are illustrative for this house type and individual properties may differ. Please check with your Sales Adviser in respect of individual properties. We give maximum dimensions within each room which includes areas of fixtures and fittings including fitted furniture. These dimensions should not be used for carpet or flooring sizes, appliance spaces or items of furniture. All images, photographs and dimensions are not intended to be relied upon for, nor to form part of, any contract unless specifically incorporated in writing into the contract.

P231-V-7DS00/ SP353990

dwh.co.uk



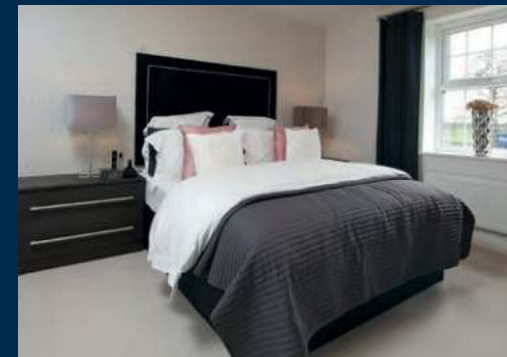
DAVID WILSON HOMES  
WHERE QUALITY LIVES

# THE INGLEBY

FOUR BEDROOM DETACHED HOME



Individual plots may vary, please speak to the Sales Adviser



The sash-style windows of this family home give it a delightfully traditional feel, while inside, the large open-plan kitchen with its dining and family areas is designed very much for modern living. Essential utility space is discreetly tucked away in a corner of the

kitchen and French doors give access to the rear garden. The separate lounge provides a comfortable haven where everyone can relax. Upstairs are two double bedrooms, the master with en suite, two single bedrooms and a family bathroom.



DAVID WILSON HOMES

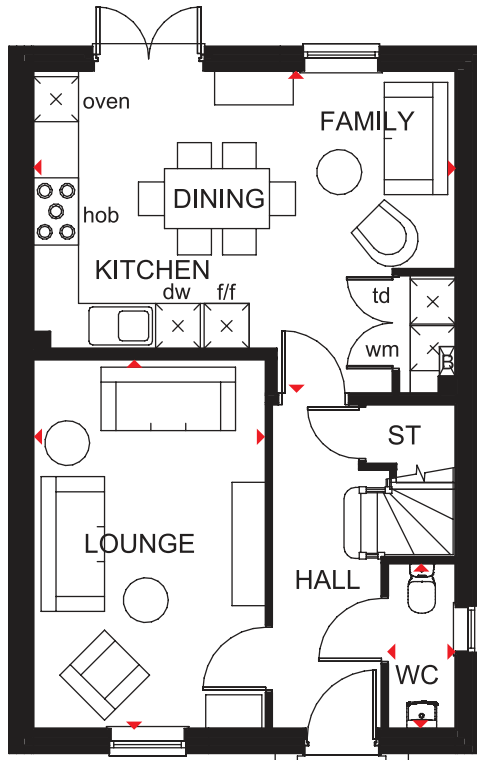
WHERE QUALITY LIVES

# THE INGLEBY

FOUR BEDROOM DETACHED HOME

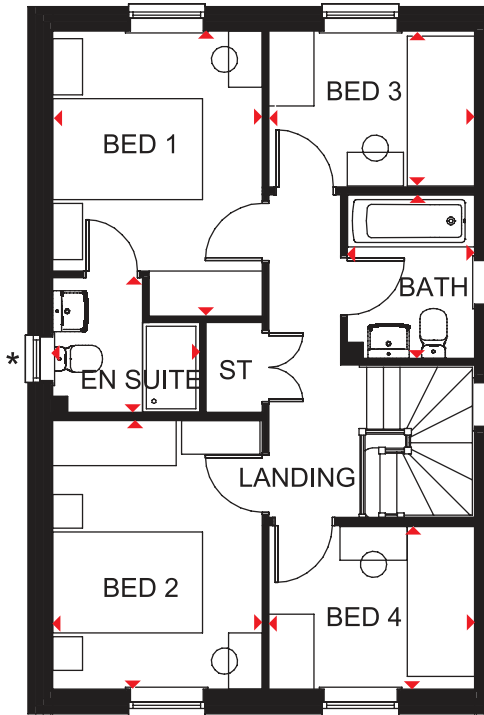
## Key

B	Boiler	wm	Washing machine space	◀▶	Dimension location
ST	Store	dw	Dishwasher space		
f/f	Fridge/freezer space	td	Tumble dryer space		



### Ground Floor

Lounge	4930 x 3100 mm	16'2" x 10'2"
Kitchen/Family/Dining	5635 x 4305 mm	18'6" x 14'1"
WC	2206 x 900 mm	7'3" x 2'11"



### First Floor

Bedroom 1	3802 x 2800 mm	12'6" x 9'2"
En suite	1962 x 1800 mm	6'5" x 5'11"
Bedroom 2	3587 x 2800 mm	11'9" x 9'2"
Bedroom 3	2747 x 2066 mm	9'0" x 6'9"
Bedroom 4	2747 x 2172 mm	9'0" x 7'1"
Bathroom	2179 x 1700 mm	7'2" x 5'7"

\*Window may be omitted on certain plots. Speak to a Sales Adviser for details on individual plots.

We are on the New Homes Quality Code register of registered developers. "We" refers to the Bannatt Developments PLC group brands including Bannatt London, Bannatt Homes and David Wilson Homes. All images used are for illustrative purposes. These and the dimensions given are illustrative for this house type and individual properties may differ. Please check with your Sales Adviser in respect of individual properties. We give maximum dimensions within each room which includes areas of fixtures and fittings including fitted furniture. These dimensions should not be used for carpet or flooring sizes, appliance spaces or items of furniture. All images, photographs and dimensions are not intended to be relied upon for, nor to form part of, any contract unless specifically incorporated in writing into the contract.

DWH 2017 H403--C 7DS00/SP389013





# THE DRUMMOND

FOUR BEDROOM DETACHED HOME



Individual plots may vary, please speak to the Sales Adviser

A generously sized family home with an intelligent use of space, The Drummond is bright and airy. The large open-plan kitchen provides dining space and a family area and has an elegant, full-glazed walk-in bay with French doors leading to the garden.

The spacious bay-fronted lounge, where all the family can relax, the separate utility room and the integral garage complete the ground floor. Upstairs are four double bedrooms, the spacious master with en suite, and a family bathroom with shower.



DAVID WILSON HOMES

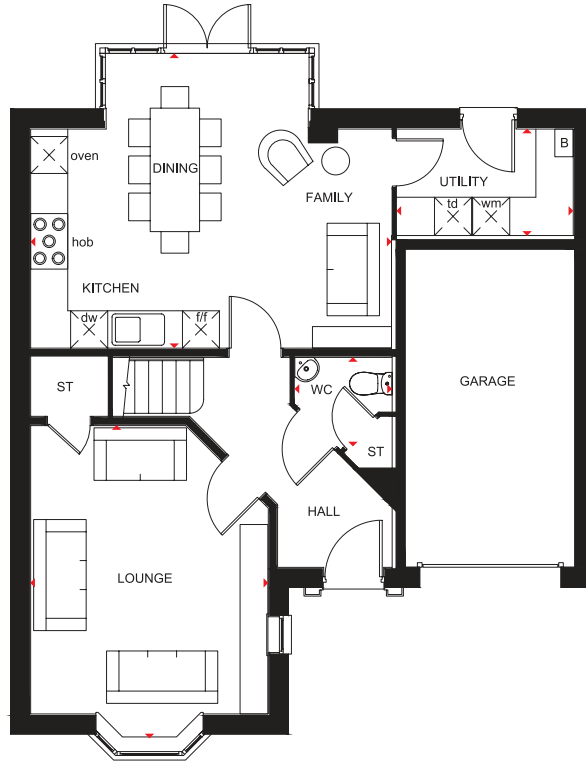
WHERE QUALITY LIVES

# THE DRUMMOND

FOUR BEDROOM DETACHED HOME

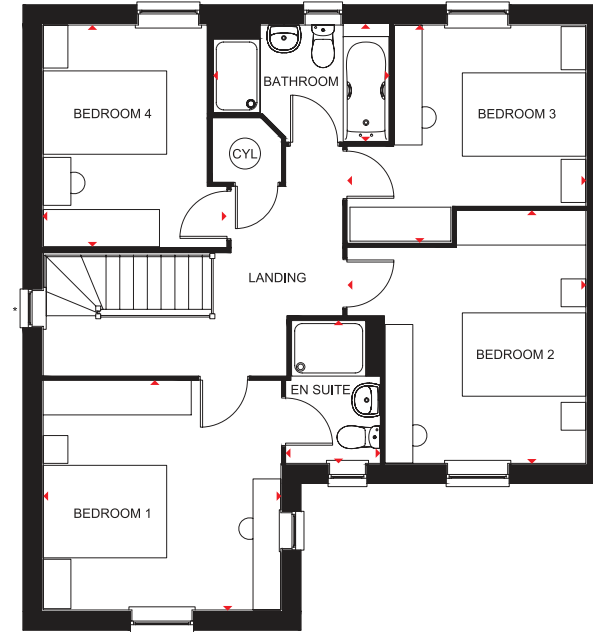
## Key

B	Boiler	f/f	Fridge/freezer space	td	Tumble dryer space
ST	Store	wm	Washing machine space	◀▶	Dimension location
CYL	Cylinder	dw	Dishwasher space		



### Ground Floor

Lounge	5068 x 3850 mm	16'7" x 12'8"
Kitchen/Family/Dining	5845 x 4775 mm	19'2" x 15'8"
Utility	2856 x 1725 mm	9'4" x 5'7"
WC	1570 x 1428 mm	5'2" x 4'8"



### First Floor

Bedroom 1	3850 x 3711 mm	12'7" x 12'2"
En suite	2315 x 1511 mm	7'7" x 4'11"
Bedroom 2	4088 x 3858mm	13'5" x 12'8"
Bedroom 3	3858 x 3525 mm	12'8" x 11'7"
Bedroom 4	3591 x 2966 mm	11'9" x 9'9"
Bathroom	2846 x 1886 mm	9'4" x 6'2"

\*Window may be omitted on certain plots. Speak to a Sales Adviser for details on individual plots.

We are on the New Homes Quality Code register of registered developers. "We" refers to the Bannatt Developments PLC group brands including Bannatt London, Bannatt Homes and David Wilson Homes. All images used are for illustrative purposes. These and the dimensions given are illustrative for this house type and individual properties may differ. Please check with your Sales Adviser in respect of individual properties. We give maximum dimensions within each room which includes areas of fixtures and fittings including fitted furniture. These dimensions should not be used for carpet or flooring sizes, appliance spaces or items of furniture. All images, photographs and dimensions are not intended to be relied upon for, nor to form part of, any contract unless specifically incorporated in writing into the contract.

H408---7DS02 HIPPED/SP416891

dwh.co.uk



DAVID WILSON HOMES  
WHERE QUALITY LIVES

# THE HERTFORD

FOUR BEDROOM DETACHED HOME



Individual plots may vary, please speak to the Sales Adviser

Designed over three floors, The Hertford is a spacious family home. A large open-plan dining area and kitchen – with separate utility – and a beautiful glazed walk-in bay with French doors leading to the garden, provide an abundance of flexible living space. Attractive bay windows in the dining area and the dual-

aspect lounge ensure this home offers a bright welcome. Two double bedrooms, the spacious master with en suite and dressing area, and the family bathroom are on the first floor. Upstairs are a further double bedroom, a single bedroom and a shower room.



DAVID WILSON HOMES

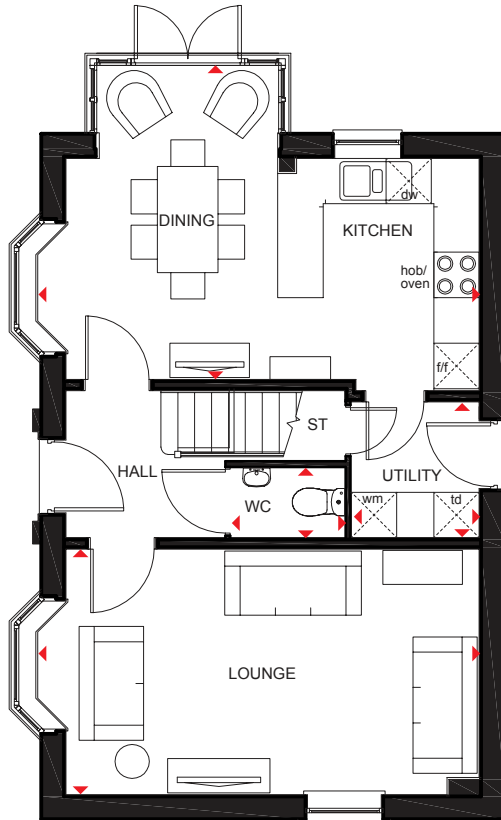
WHERE QUALITY LIVES

# THE HERTFORD

FOUR BEDROOM DETACHED HOME

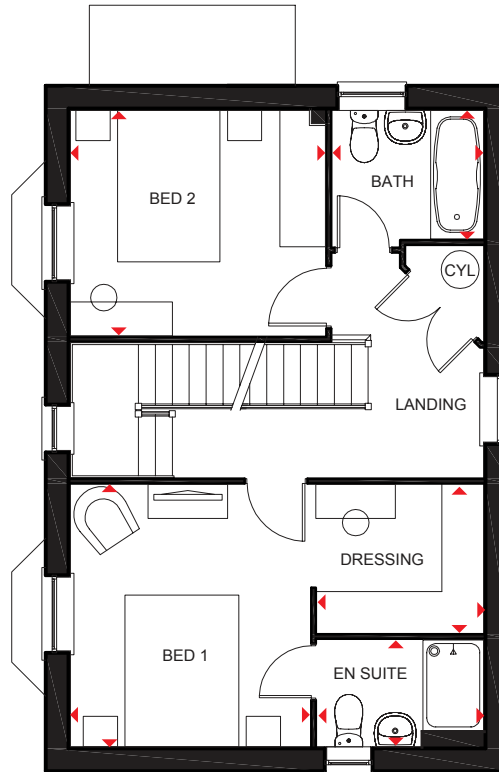
## Key

ST	Store	wm	Washing machine space	◀▶	Dimension location
CYL	Cylinder	dw	Dishwasher space		
f/f	Fridge/freezer space	td	Tumble dryer space		



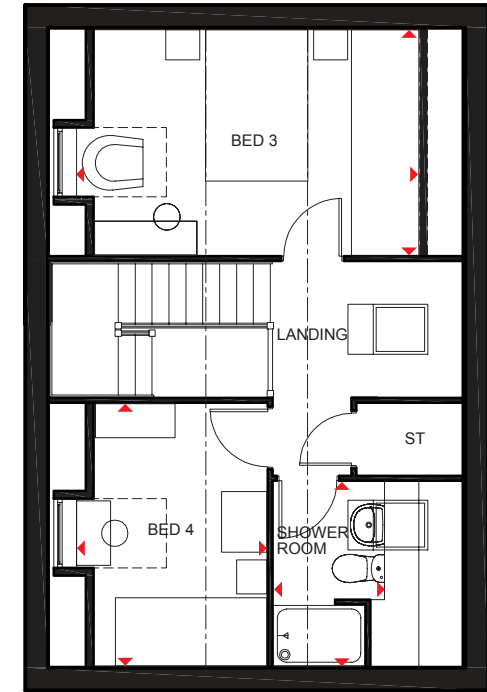
### Ground Floor

Lounge	5852 x 3242 mm	19'2" x 10'7"
Kitchen/Dining	5852 x 4142 mm	19'2" x 13'7"
Utility	1688 x 1791 mm	5'6" x 5'10"
WC	1500 x 920 mm	4'11" x 3'0"



### First Floor

Bed 1	3462 x 3166 mm	11'4" x 10'4"
En suite	2200 x 1410 mm	7'2" x 4'7"
Dressing	2200 x 1963 mm	7'2" x 6'5"
Bed 2	3366 x 2978 mm	11'0" x 9'9"
Bath	2000 x 1700 mm	6'6" x 5'6"



### Second Floor

Bed 3	4540* x 2978 mm	14'10"* x 9'9"
Bed 4	3462 x 2537* mm	11'4" x 8'3"*
Shower room	2432 x 1464* mm	7'11" x 4'9"*

\*Overall floor dimension includes lowered ceiling areas

We are on the New Homes Quality Code register of registered developers. "We" refers to the Bannatt Developments PLC group brands including Bannatt London, Bannatt Homes and David Wilson Homes. All images used are for illustrative purposes. These and the dimensions given are illustrative for this house type and individual properties may differ. Please check with your Sales Adviser in respect of individual properties. We give maximum dimensions within each room which includes areas of fixtures and fittings including fitted furniture. These dimensions should not be used for carpet or flooring sizes, appliance spaces or items of furniture. All images, photographs and dimensions are not intended to be relied upon for, nor to form part of, any contract unless specifically incorporated in writing into the contract.

H470---7DS00 / SP 341684



# THE BRADGATE

FOUR BEDROOM DETACHED HOME



Individual plots may vary, please speak to the Sales Adviser

A home to suit all the family, the Bradgate offers a combination of flexible communal areas and dedicated quiet space. An expansive open-plan kitchen with separate utility has dining and family areas leading to the garden – and extended living space in good weather – via a beautiful walk-in glazed bay with

French doors. A separate study and a lounge with attractive bay window provide room to work and relax in. Four double bedrooms upstairs, the spacious master with en suite, ensure everyone has space of their own. A family bathroom completes this truly superb family home.



DAVID WILSON HOMES

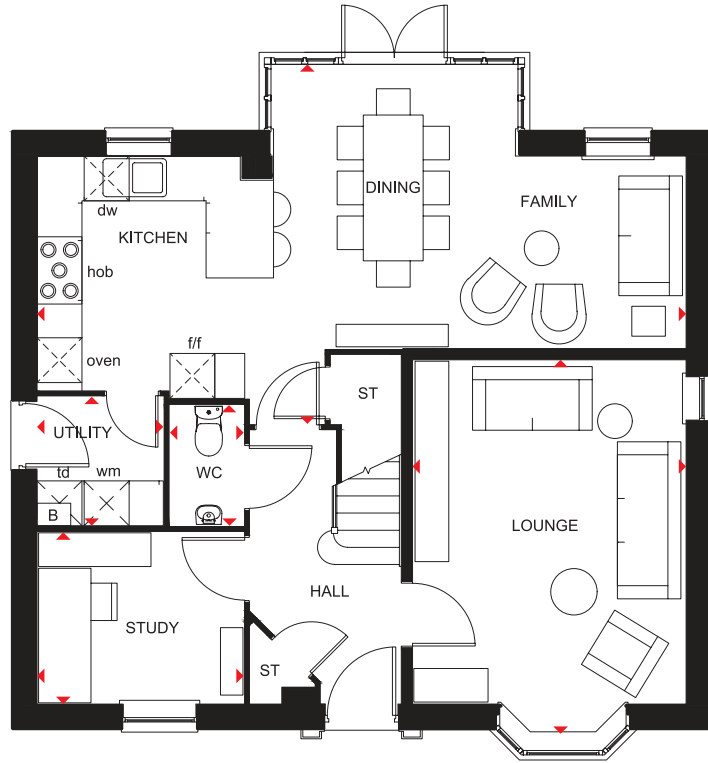
WHERE QUALITY LIVES

# THE BRADGATE

FOUR BEDROOM DETACHED HOME

## Key

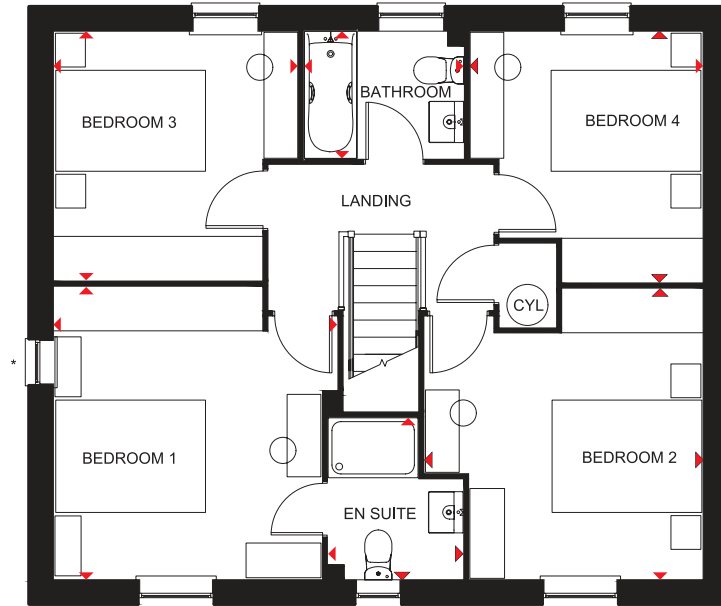
B	Boiler	f/f	Fridge/freezer space	td	Tumble dryer space
ST	Store	wm	Washing machine space	◀▶	Dimension location
CYL	Cylinder	dw	Dishwasher space		



### Ground Floor

Lounge	4999 x 3658 mm	16'4" x 12'0"
Kitchen/Dining/Family	8677 x 4807 mm	28'5" x 15'9"
Study	2762 x 2295 mm	9'1" x 7'6"
Utility	1687 x 1724 mm	5'6" x 5'7"
WC	1614 x 986 mm	5'4" x 3'2"

\*Window may be omitted on certain plots. Speak to a Sales Adviser for details on individual plots.



### First Floor

Bedroom 1	3910 x 3791 mm	12'9" x 12'5"
En suite	2162 x 1799 mm	7'1" x 5'10"
Bedroom 2	3720 x 3885 mm	12'2" x 12'9"
Bedroom 3	3329 x 3263 mm	10'11" x 10'8"
Bedroom 4	3353 x 3112 mm	11'0" x 10'2"
Bathroom	2124 x 1700 mm	6'11" x 5'7"

\*Window may be omitted on certain plots. Speak to a Sales Adviser for details on individual plots.

We are on the New Homes Quality Code register of registered developers. "We" refers to the Barratt Developments PLC group brands including Barratt London, Barratt Homes and David Wilson Homes. All images used are for illustrative purposes. These and the dimensions given are illustrative for this house type and individual properties may differ. Please check with your Sales Adviser in respect of individual properties. We give maximum dimensions within each room which includes areas of fixtures and fittings including fitted furniture. These dimensions should not be used for carpet or flooring sizes, appliance spaces or items of furniture. All images, photographs and dimensions are not intended to be relied upon for, nor to form part of, any contract unless specifically incorporated in writing into the contract.

H417--H7 DS03/SP416917



# THE WINSTONE

FOUR BEDROOM DETACHED HOME



Individual plots may vary, please speak to the Sales Adviser

The Winstone is a truly magnificent detached family home. The elegant central hall leads to the stylish open-plan kitchen with bright breakfast and family areas, and a glazed bay leading to the garden. French doors also open onto the garden from the spacious lounge. The separate dining room, study and utility room

complete the ground floor. Upstairs are four double bedrooms, the beautiful master bedroom with dressing area and full en suite. The second bedroom also has an en suite, and the large bathroom with shower provides for the rest of the family.



DAVID WILSON HOMES

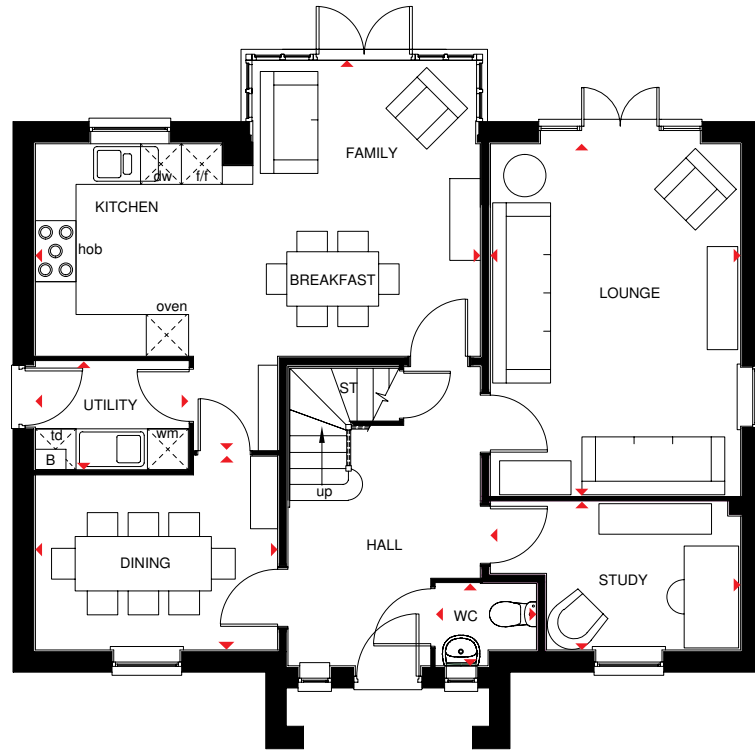
WHERE QUALITY LIVES

# THE WINSTONE

FOUR BEDROOM DETACHED HOME

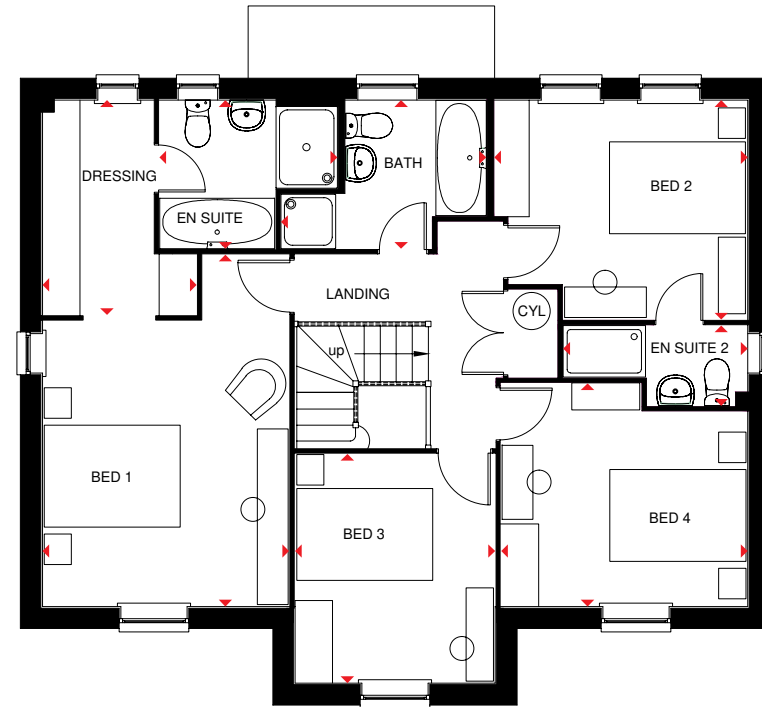
## Key

B	Boiler	f/f	Fridge/freezer space	td	Tumble dryer space
ST	Store	wm	Washing machine space	◀▶	Dimension location
CYL	Cylinder	dw	Dishwasher space		



### Ground Floor

Lounge	5171 x 3675 mm	16'11" x 12'0"
Kitchen/Family/Breakfast	6540 x 5725 mm	21'5" x 18'9"
Dining	3563 x 2851 mm	11'8" x 9'4"
Study	3675 x 2180 mm	12'0" x 7'2"
Utility	2250 x 1591 mm	7'4" x 5'3"
WC	1475 x 1210 mm	4'10" x 4'0"



### First Floor

Bed 1	5169 x 3624 mm	16'11" x 11'10"
Dressing	3155 x 2265 mm	10'4" x 7'5"
En suite 1	2615 x 2182 mm	8'7" x 7'2"
Bed 2	3722 x 3223 mm	12'2" x 10'7"
En suite 2	2710 x 1178 mm	8'11" x 3'10"
Bed 3	3368 x 2940 mm	11'1" x 9'8"
Bed 4	3623 x 3280 mm	11'10" x 10'9"
Bath	3014 x 2182 mm	9'10" x 7'2"

We are on the New Homes Quality Code register of registered developers. "We" refers to the Barratt Developments PLC group brands including Barratt London, Barratt Homes and David Wilson Homes. All images used are for illustrative purposes. These and the dimensions given are illustrative for this house type and individual properties may differ. Please check with your Sales Adviser in respect of individual properties. We give maximum dimensions within each room which includes areas of fixtures and fittings including fitted furniture. These dimensions should not be used for carpet or flooring sizes, appliance spaces or items of furniture. All images, photographs and dimensions are not intended to be relied upon for, nor to form part of, any contract unless specifically incorporated in writing into the contract.



# THE SHELBOURNE

FOUR BEDROOM DETACHED HOME



Individual plots may vary, please speak to the Sales Adviser



This stylishly designed home boasts a beautiful ground floor, featuring an airy kitchen with breakfast and large separate utility room and French doors leading to the rear garden. A separate dining room with its own set of French doors and a

comfortable bay-fronted lounge are also presented downstairs. With just as much attention to detail, the first floor hosts four double bedrooms; the master with dressing area and full en suite, and a family bathroom with separate shower.



DAVID WILSON HOMES

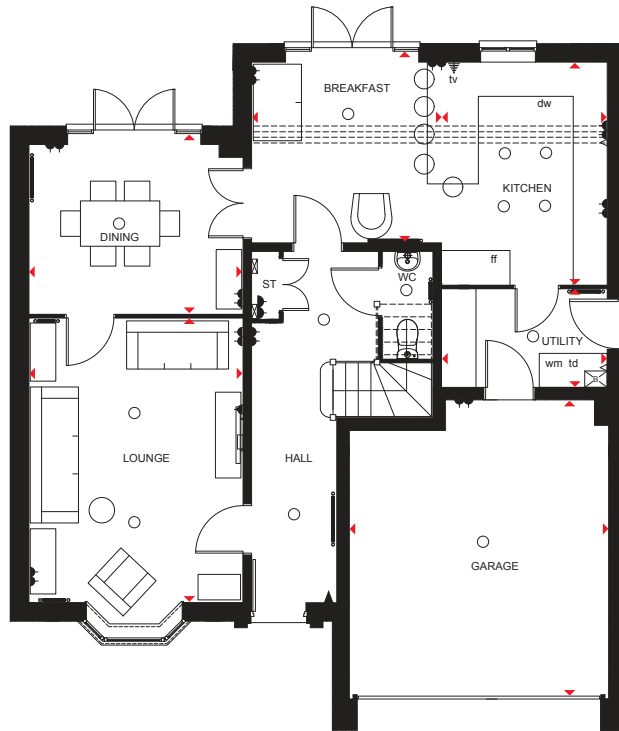
WHERE QUALITY LIVES

# THE SHELBOURNE

FOUR BEDROOM DETACHED HOME

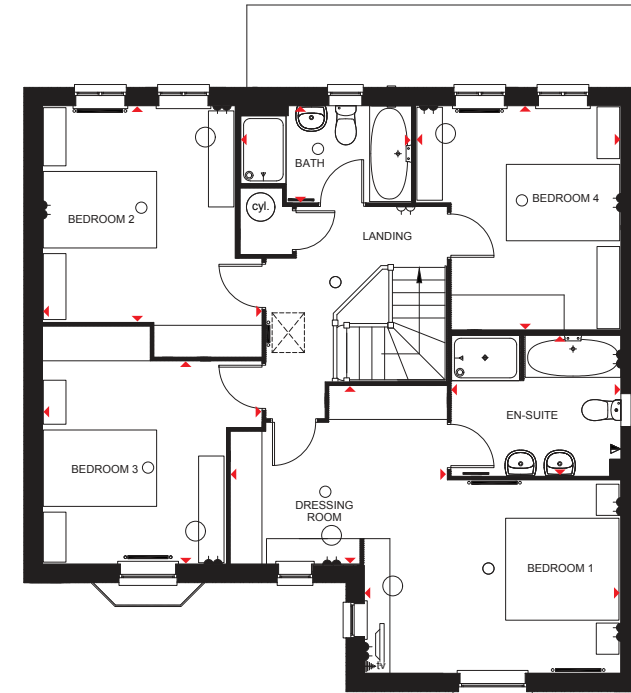
## Key

- Light fitting
- ◀ Telephone outlet point
- Radiator
- B Boiler
- CYL Cylinder
- wm Washing machine space
- td Tumble dryer space
- ◁ Electric socket
- ◁ TV aerial socket
- Towel radiator
- ST Store
- ff Fridge/freezer space
- dw Dishwasher space
- ◀▶ Dimension location



### Ground Floor

Lounge	3783 x 5015 mm	12'5" x 16'5"
Kitchen/Breakfast	6277 x 3925 mm	20'7" x 12'11"
Dining	3783 x 2986 mm	12'5" x 9'10"
Utility	2927 x 1727 mm	9'7" x 5'8"
WC	1890 x 885 mm	6'2" x 2'11"



### First Floor

Bed 1/Dressing	6885 x 5066 mm	22'7" x 16'7"
En suite	2988 x 2400 mm	9'10" x 7'10"
Bed 2	4425 x 3389 mm	14'6" x 11'1"
Bed 3	3236 x 4190 mm	10'7" x 13'9"
Bed 4	3942 x 3611 mm	12'11" x 11'10"
Bath	3010 x 1700 mm	9'11" x 5'7"

We are on the New Homes Quality Code register of registered developers. "We" refers to the Bannatt Developments PLC group brands including Bannatt London, Bannatt Homes and David Wilson Homes. All images used are for illustrative purposes. These and the dimensions given are illustrative for this house type and individual properties may differ. Please check with your Sales Adviser in respect of individual properties. We give maximum dimensions within each room which includes areas of fixtures and fittings including fitted furniture. These dimensions should not be used for carpet or flooring sizes, appliance spaces or items of furniture. All images, photographs and dimensions are not intended to be relied upon for, nor to form part of, any contract unless specifically incorporated in writing into the contract.

SP273257

dwh.co.uk



DAVID WILSON HOMES  
WHERE QUALITY LIVES

# THE EMERSON

FIVE BEDROOM DETACHED HOME



Individual plots may vary, please speak to the Sales Adviser



The exceptionally spacious Emerson radiates comfort and style over three floors. The large kitchen, with separate utility, has breakfast and family areas and access to the garden. The large dual-aspect lounge also leads to the garden via French

doors and there's a separate dining room for more formal entertaining. On the first floor are three double bedrooms, the large master with dressing area and en suite. The top floor has a further double bedroom, a single bedroom and a shower room.



DAVID WILSON HOMES

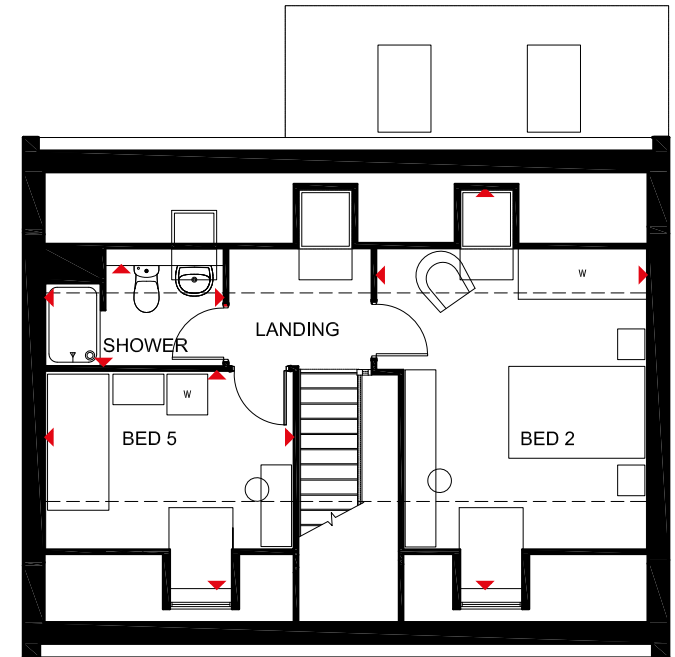
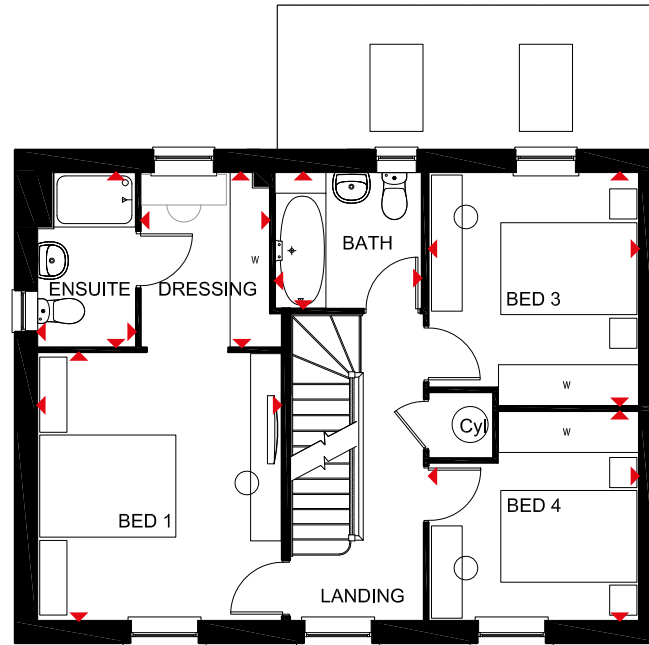
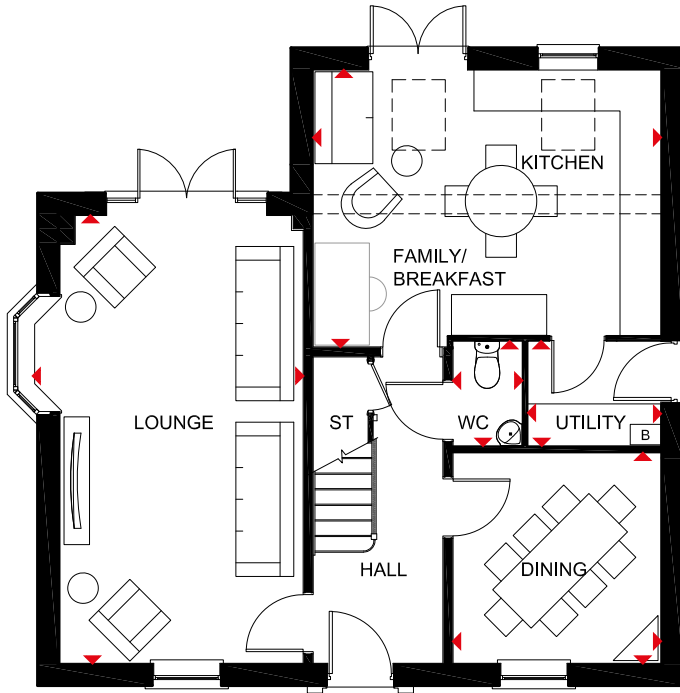
WHERE QUALITY LIVES

# THE EMERSON

FIVE BEDROOM DETACHED HOME

## Key

B	Boiler	f/f	Fridge/freezer space	td	Tumble dryer space
ST	Store	wm	Washing machine space	◀▶	Dimension location
CYL	Cylinder	dw	Dishwasher space		



### Ground Floor

Lounge	6580 x 3970 mm	21' 7" x 13' 0"
Kitchen/Family/Breakfast	5107 x 4067 mm	16' 9" x 13' 4"
Utility	1949 x 1531 mm	6' 5" x 5' 0"
Dining	3089 x 3051 mm	10' 2" x 10' 0"
W.C	1531 x 1012 mm	5' 0" x 3' 4"
Hall	1905 x 4500 mm	6' 3" x 14' 9"

### First Floor

Bed 1	3931 x 3574 mm	12' 11" x 11' 9"
Dressing	2560 x 1879 mm	8' 5" x 6' 2"
En suite	2560 x 1435 mm	8' 5" x 4' 8"
Bed 3	3423 x 3077 mm	11' 3" x 10' 1"
Bed 4	3077 x 3068 mm	10' 1" x 10' 1"
Bath	2141 x 1993 mm	7' 0" x 6' 6"
Landing	1954 x 4500 mm	6' 5" x 14' 9"

### Second Floor

Bed 2	5870* x 3960 mm	19' 3"* x 13' 0"
Bed 5	3633 x 3189 mm	11' 11" x 10' 6"*
Shower Room	2605 x 1470* mm	8' 7" x 4' 10"*
Landing	2092 x 1711 mm	6' 10" x 5' 7"

\*Overall floor dimension includes lowered ceiling areas

We are on the New Homes Quality Code register of registered developers. "We" refers to the Barratt Developments PLC group brands including Barratt London, Barratt Homes and David Wilson Homes. All images used are for illustrative purposes. These and the dimensions given are illustrative for this house type and individual properties may differ. Please check with your Sales Adviser in respect of individual properties. We give maximum dimensions within each room which includes areas of fixtures and fittings including fitted furniture. These dimensions should not be used for carpet or flooring sizes, appliance spaces or items of furniture. All images, photographs and dimensions are not intended to be relied upon for, nor to form part of, any contract unless specifically incorporated in writing into the contract.



# THE AVONDALE

FOUR BEDROOM DETACHED HOME



Individual plots may vary, please speak to the Sales Adviser

This tasteful, double-fronted, detached home, with elegant sash-style windows, provides plenty of flexible living space. The Avondale's generous open-plan kitchen has a dedicated dining area with an attractive bay window, and a separate

utility room. A large, triple-aspect lounge leads to the garden via French doors and a separate study provides quiet space to work. Upstairs are four double bedrooms, the master with en suite, and a family bathroom with bath and shower.



DAVID WILSON HOMES

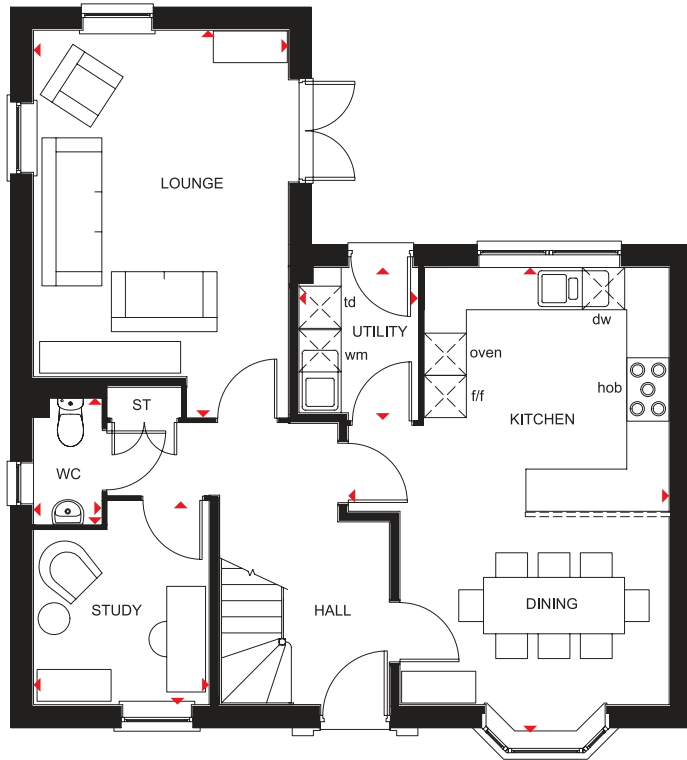
WHERE QUALITY LIVES

# THE AVONDALE

FOUR BEDROOM DETACHED HOME

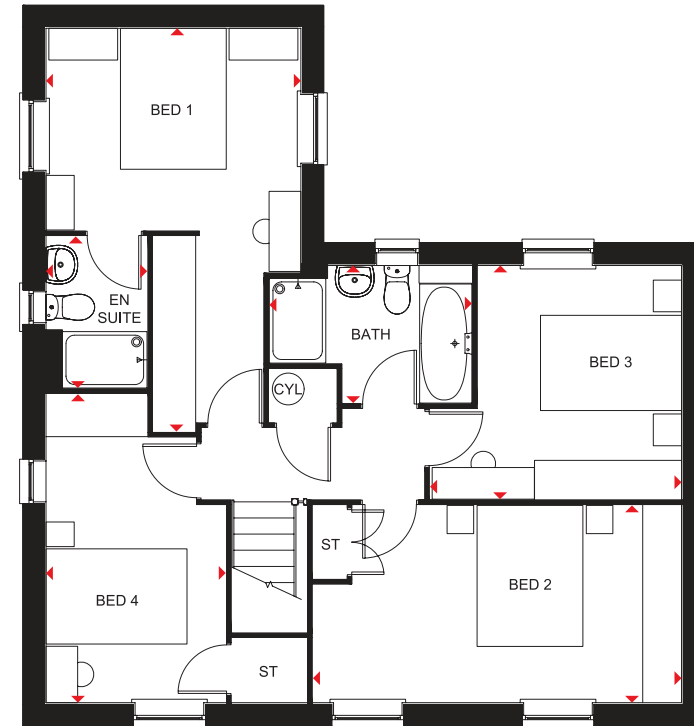
## Key

ST	Store	wm	Washing machine space	◀▶	Dimension location
CYL	Cylinder	dw	Dishwasher space		
f/f	Fridge/freezer space	td	Tumble dryer space		



### Ground Floor

Lounge	5490 x 3615 mm	18'0" x 11'10"
Kitchen/Dining	6600 x 4550 mm	21'7" x 14'11"
Utility	2164 x 1687 mm	7'7" x 5'6"
Study	2885 x 2490 mm	9'5" x 8'2"
WC	1793 x 963 mm	5'10" x 3'1"



### First Floor

Bed 1	5720 x 3615 mm	18'9" x 11'10"
En suite	2151 x 1435 mm	7'0" x 4'8"
Bed 2	5227 x 2800 mm	17'1" x 9'2"
Bed 3	3566 x 3316 mm	11'8" x 10'10"
Bed 4	4376 x 2550 mm	14'4" x 8'4"
Bath	2871 x 1952 mm	9'5" x 6'4"

All images used are for illustrative purposes. These and the dimensions given are illustrative for this house type and individual properties may differ. Please check with your Sales Adviser in respect of individual properties. We give maximum dimensions within each room which includes areas of fixtures and fittings including fitted furniture. These dimensions should not be used for carpet or flooring sizes, appliance spaces or items of furniture. All images, photographs and dimensions are not intended to be relied upon for, nor to form part of, any contract unless specifically incorporated in writing into the contract.

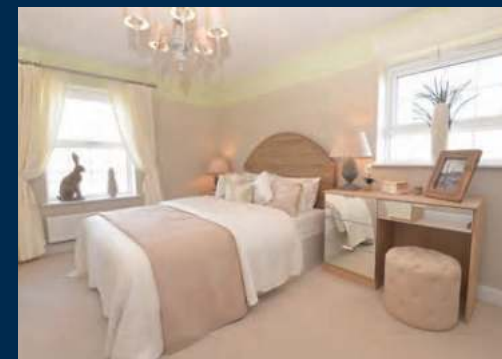


# THE HENLEY

FIVE BEDROOM DETACHED HOME



Individual plots may vary, please speak to the Sales Adviser



The Henley is an incredibly bright and spacious family home with attractive walk-in bay windows in three of the ground floor rooms. Its stylishness is apparent from the moment you step through the front door. The hall leads to a large lounge through elegant double doors, as well as to a separate dining room and an expansive open-plan

kitchen with breakfast area and family space. Both kitchen and lounge lead to the garden via French doors and there is also a separate utility room. The first floor is just as spacious with four double bedrooms, both the large master and Bedroom 2 with en suite. A single bedroom can be used as a study and there is also a family bathroom with shower.



DAVID WILSON HOMES

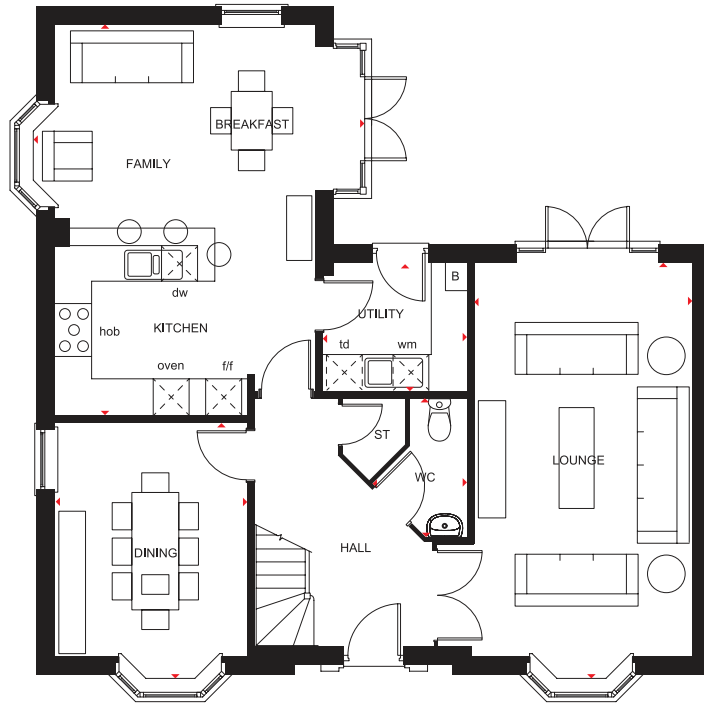
WHERE QUALITY LIVES

# THE HENLEY

FIVE BEDROOM DETACHED HOME

## Key

B	Boiler	f/f	Fridge/freezer space	td	Tumble dryer space
ST	Store	wm	Washing machine space	◀▶	Dimension location
CYL	Cylinder	dw	Dishwasher space		



### Ground Floor

Lounge	7050 x 3675 mm	23'1" x 12'1"
Kitchen/Family/Breakfast	6602 x 5600 mm	21'8" x 18'4"
Dining	4347 x 3225 mm	13'0" x 10'7"
Utility	2437 x 2150 mm	8'0" x 7'0"
WC	2340 x 1600 mm	7'8" x 5'3"



### First Floor

Bed 1	6397 x 4403 mm	21'0" x 14'5"
En suite 1	2610 x 1390 mm	8'7" x 4'7"
Bed 2	3925 x 3286 mm	12'11" x 10'9"
En suite 2	2610 x 1374 mm	8'7" x 4'6"
Bed 3	3733 x 3112 mm	12'3" x 10'2"
Bed 4	3452 x 3211 mm	11'4" x 10'6"
Bed 5/Study	2849 x 2352 mm	9'4" x 7'9"
Bathroom	3023 x 2347 mm	9'11" x 7'8"

We are on the New Homes Quality Code register of registered developers. "We" refers to the Barratt Developments PLC group brands including Barratt London, Barratt Homes and David Wilson Homes. All images used are for illustrative purposes. These and the dimensions given are illustrative for this house type and individual properties may differ. Please check with your Sales Adviser in respect of individual properties. We give maximum dimensions within each room which includes areas of fixtures and fittings including fitted furniture. These dimensions should not be used for carpet or flooring sizes, appliance spaces or items of furniture. All images, photographs and dimensions are not intended to be relied upon for, nor to form part of, any contract unless specifically incorporated in writing into the contract.





# THE FINSBURY

FOUR BEDROOM DETACHED HOME



Individual plots may vary, please speak to the Sales Adviser



An exceptional four bedroom home with flexible living space for your growing family. The quality kitchen with dining area is bright and airy thanks to the French doors that open onto the rear garden. Downstairs there is also a spacious, bay-fronted

lounge. The first floor features three double bedrooms, the generous master with en suite, a single bedroom and a family bathroom. An integral garage adds extra security.



DAVID WILSON HOMES

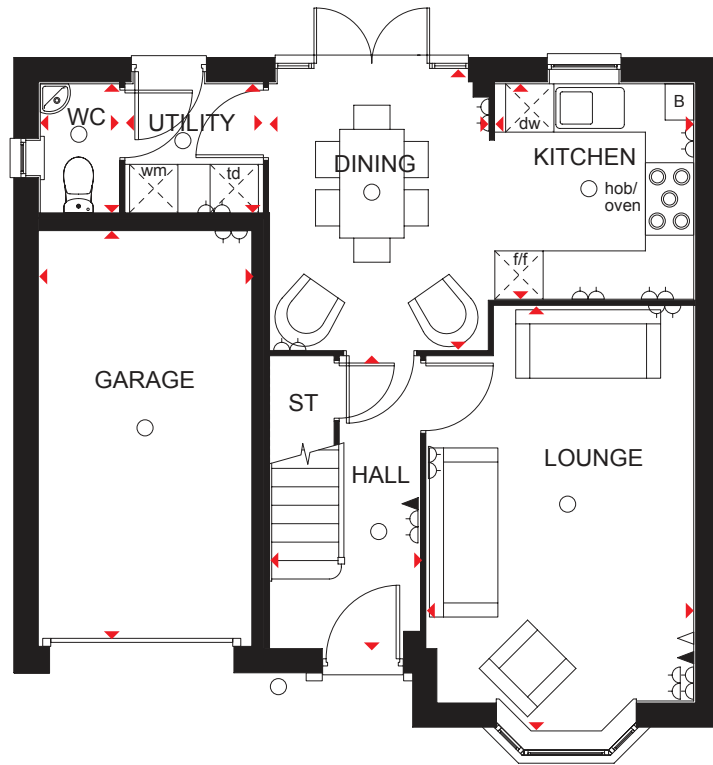
WHERE QUALITY LIVES

# THE FINSBURY

FOUR BEDROOM DETACHED HOME

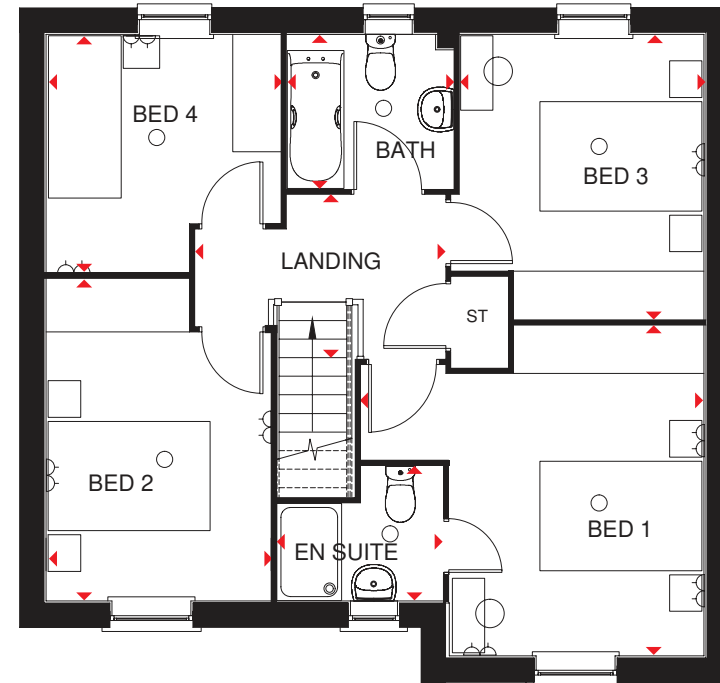
## Key

- Light fitting
- ◀ Telephone outlet point
- B Boiler
- f/f Fridge/freezer space
- dw Dishwasher space
- ◀▶ Dimension location
- ◁ Electric socket
- ◁ T.V. aerial socket
- ST Store
- wm Washing machine space
- td Tumble dryer space



### Ground Floor

Lounge	5273 x 3244 mm	17'2" x 10'10"
Kitchen	2675 x 2461 mm	8'9" x 8'1"
Dining	3301 x 2718 mm	10'10" x 8'11"
Utility	1694 x 1603 mm	5'7" x 5'3"
WC	1603 x 975 mm	5'3" x 3'2"
Garage	5164 x 2652 mm	16'11" x 8'8"



### First Floor

Bed 1	4069 x 4226 mm	13'4" x 13'10"
En suite	2036 x 1662 mm	6'8" x 5'5"
Bed 2	3970 x 2764 mm	13'0" x 9'1"
Bed 3	3509 x 3006 mm	11'6" x 9'10"
Bed 4	2933 x 2887 mm	9'7" x 9'4"
Bathroom	2046 x 1900 mm	6'8" x 6'3"

We are on the New Homes Quality Code register of registered developers. "We" refers to the Bannatt Developments PLC group brands including Bannatt London, Bannatt Homes and David Wilson Homes. All images used are for illustrative purposes. These and the dimensions given are illustrative for this house type and individual properties may differ. Please check with your Sales Adviser in respect of individual properties. We give maximum dimensions within each room which includes areas of fixtures and fittings including fitted furniture. These dimensions should not be used for carpet or flooring sizes, appliance spaces or items of furniture. All images, photographs and dimensions are not intended to be relied upon for, nor to form part of, any contract unless specifically incorporated in writing into the contract.

SP363996

dwh.co.uk



DAVID WILSON HOMES

WHERE QUALITY LIVES