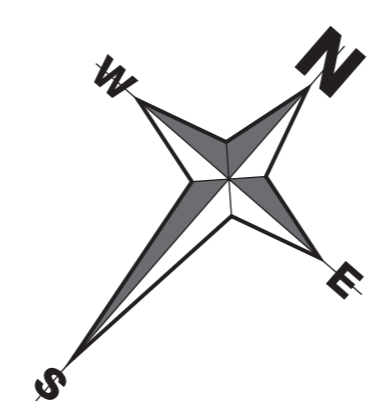




WADDOW  
HEIGHTS

CLITHEROE

Waddington Road, Clitheroe BB7 2JD



-  **Abbeydale**  
3 bedroom detached
-  **Avondale**  
4 bedroom detached
-  **Bradgate**  
4 bedroom detached
-  **Hertford**  
4 bedroom detached
-  **Milford**  
4 bedroom detached
-  **Bayswater**  
4 bedroom detached
  
-  - Stone exterior finish
-  - Render exterior finish
-  - Sales Centre & Show Homes



# THE BAYSWATER

FOUR BEDROOM DETACHED HOME



Individual plots may vary, please speak to the Sales Adviser



The Bayswater is beautifully designed over three floors with an intelligent use of space applied. The expansive open-plan kitchen with dining and family areas has French doors leading to the rear garden. The lounge, with an attractive

bay window, is perfect for all the family to relax in. On the first floor are two double bedrooms, a twin bedroom and the family bathroom. The spacious master bedroom, with en suite and dressing area, takes up the entire second floor.



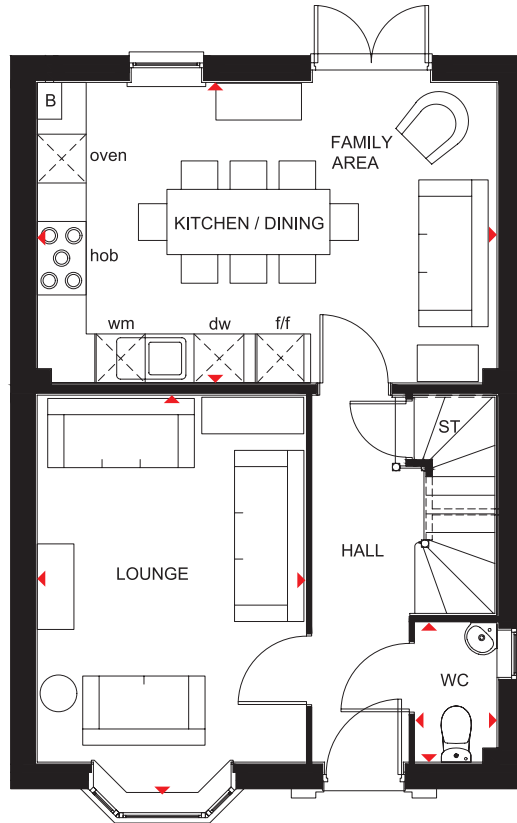
DAVID WILSON HOMES  
WHERE QUALITY LIVES

# THE BAYSWATER

FOUR BEDROOM DETACHED HOME

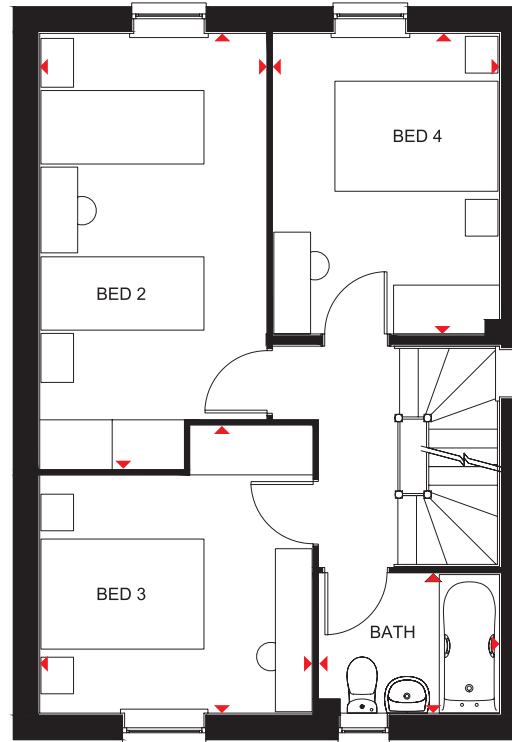
## Key

B	Boiler	wm	Washing machine space	◀▶	Dimension location
ST	Store	dw	Dishwasher space		
f/f	Fridge/freezer space	RL	Roof light		



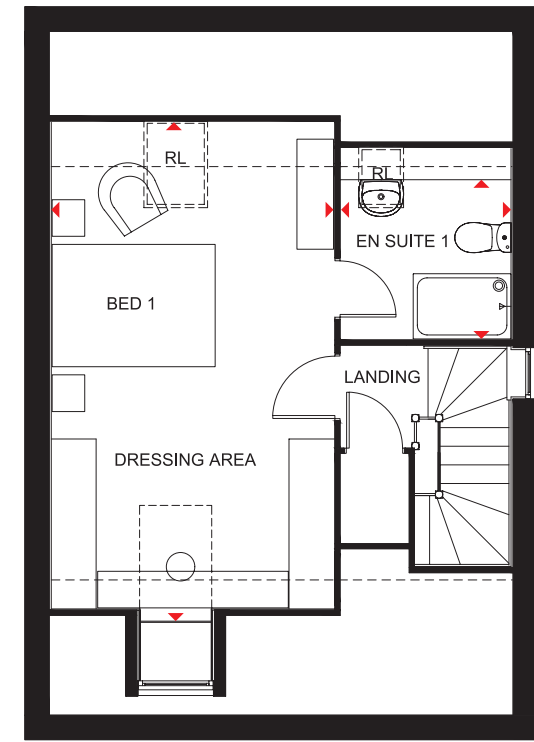
### Ground Floor

Lounge	4900 x 3290 mm	16'1" x 10'10"
Kitchen/Family/Dining	5640 x 3687 mm	18'6" x 12'1"
WC	1712 x 1000 mm	5'7" x 3'3"



### First Floor

Bedroom 2	2773 x 5341 mm	9'1" x 17'6"
Bedroom 3	3341 x 3525 mm	11'0" x 11'7"
Bedroom 4	2776 x 3688 mm	9'1" x 12'1"
Bathroom	2210 x 1712 mm	7'3" x 5'7"



### Second Floor

Bedroom 1/Dressing Area	6120* x 3463 mm	20'1"* x 11'4"
En suite	2085 x 1954* mm	6'10" x 6'5"*

\*Overall floor dimension includes lowered ceiling areas

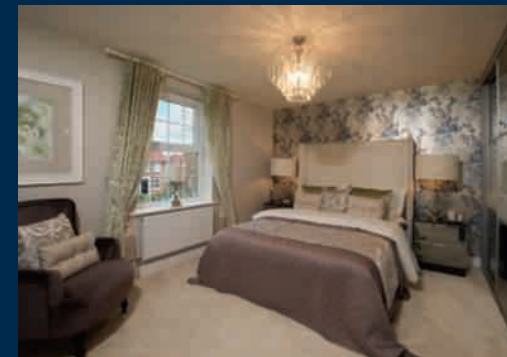
We are on the New Homes Quality Code register of registered developers. "We" refers to the Barratt Developments PLC group brands including Barratt London, Barratt Homes and David Wilson Homes. All images used are for illustrative purposes. These and the dimensions given are illustrative for this house type and individual properties may differ. Please check with your Sales Adviser in respect of individual properties. We give maximum dimensions within each room which includes areas of fixtures and fittings including fitted furniture. These dimensions should not be used for carpet or flooring sizes, appliance spaces or items of furniture. All images, photographs and dimensions are not intended to be relied upon for, nor to form part of, any contract unless specifically incorporated in writing into the contract. H406---7 DS02/SP394962

# THE BRADGATE

FOUR BEDROOM DETACHED HOME



Individual plots may vary, please speak to the Sales Adviser



A home to suit all the family, The Bradgate offers a combination of flexible communal areas and dedicated quiet space. An expansive open-plan kitchen with separate utility has dining and family areas leading to the garden – and extended living space in good weather – via a beautiful walk-in glazed bay with

French doors. A separate study and a lounge with attractive bay window provide room to work and relax in. Four double bedrooms upstairs, the spacious master with en suite, ensure everyone has space of their own. A family bathroom completes this truly superb family home.



DAVID WILSON HOMES  
WHERE QUALITY LIVES

# THE BRADGATE

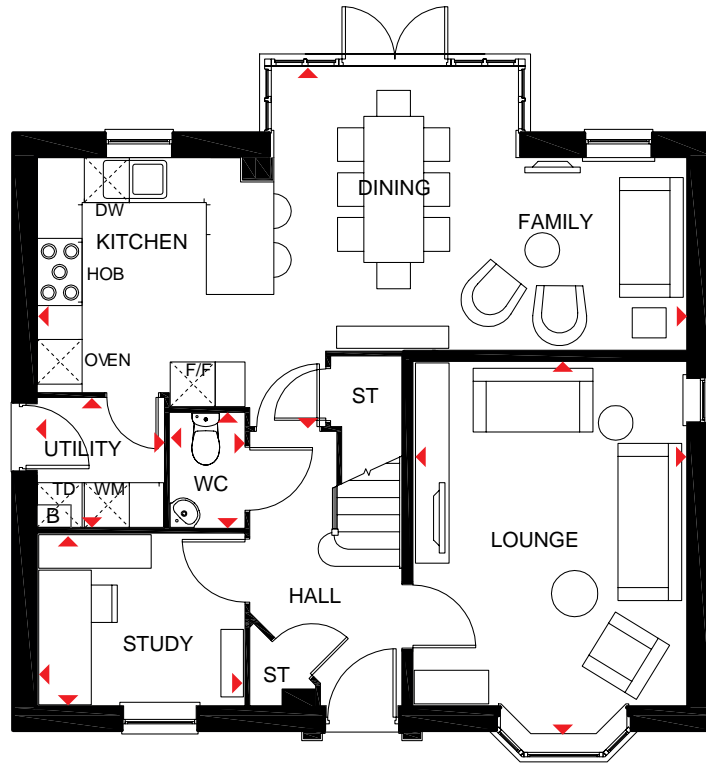
FOUR BEDROOM DETACHED HOME

## Key

B Boiler  
ST Store  
CYL Cylinder

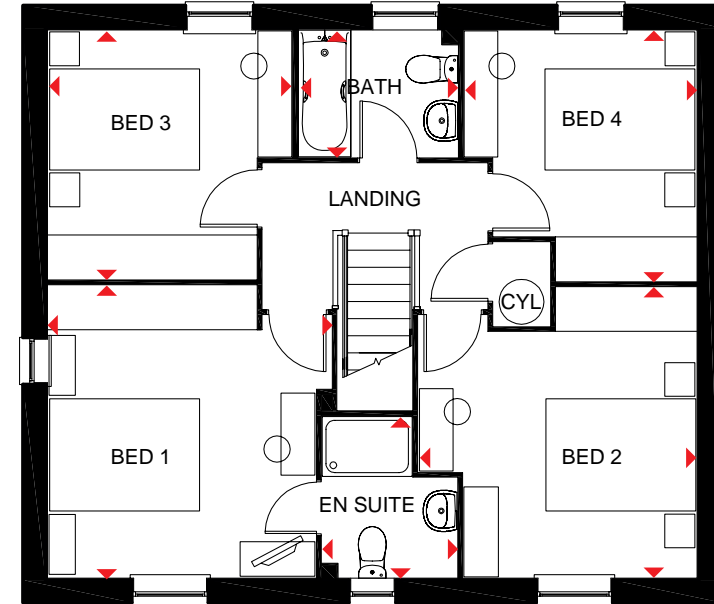
f/f Fridge/freezer space  
wm Washing machine space  
dw Dishwasher space

td Tumble dryer space  
◀▶ Dimension location



### Ground Floor

Lounge	4999 x 3658 mm	16'4" x 12'0"
Kitchen/Dining/Family	8677 x 4807 mm	28'5" x 15'9"
Study	2762 x 2295 mm	9'0" x 7'6"
Utility	1687 x 1724 mm	5'6" x 5'7"
WC	1524 x 986 mm	5'0" x 3'2"



### First Floor

Bed 1	3910 x 3791 mm	12'9" x 12'5"
En suite	2162 x 1799 mm	7'1" x 5'10"
Bed 2	3720 x 3885 mm	12'2" x 12'9"
Bed 3	3329 x 3263 mm	10'11" x 10'8"
Bed 4	3353 x 3112 mm	11'0" x 10'2"
Bath	2124 x 1700 mm	6'11" x 5'7"

We are on the New Homes Quality Code register of registered developers. "We" refers to the Barratt Developments PLC group brands including Barratt London, Barratt Homes and David Wilson Homes. All images used are for illustrative purposes. These and the dimensions given are illustrative for this house type and individual properties may differ. Please check with your Sales Adviser in respect of individual properties. We give maximum dimensions within each room which includes areas of fixtures and fittings including fitted furniture. These dimensions should not be used for carpet or flooring sizes, appliance spaces or items of furniture. All images, photographs and dimensions are not intended to be relied upon for, nor to form part of, any contract unless specifically incorporated in writing into the contract.

H417---7 DS00/SP341702



# THE HERTFORD

FOUR BEDROOM DETACHED HOME



Individual plots may vary, please speak to the Sales Adviser

Designed over three floors, The Hertford is a spacious family home. A large open-plan dining area and kitchen – with separate utility – and a beautiful glazed walk-in bay with French doors leading to the garden, provide an abundance of flexible living space. Attractive bay windows in the dining area and the dual-

aspect lounge ensure this home offers a bright welcome. Two double bedrooms, the spacious master with en suite and dressing area, and the family bathroom are on the first floor. Upstairs are a further double bedroom, a single bedroom and a shower room.



DAVID WILSON HOMES

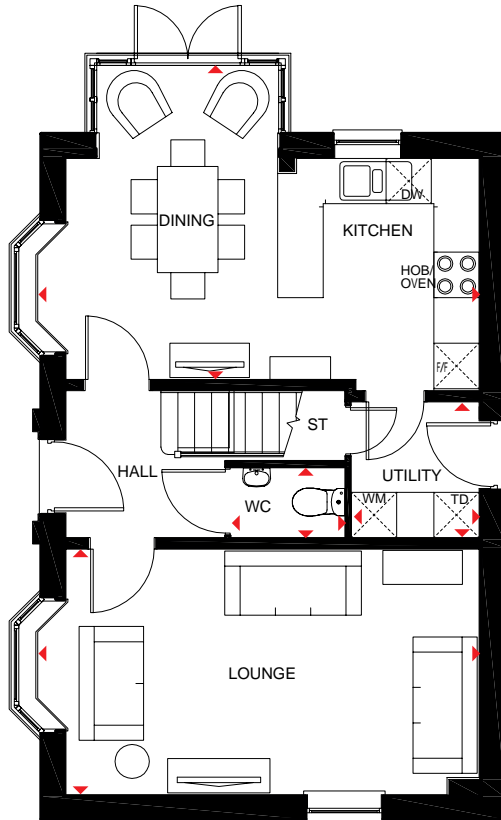
WHERE QUALITY LIVES

# THE HERTFORD

FOUR BEDROOM DETACHED HOME

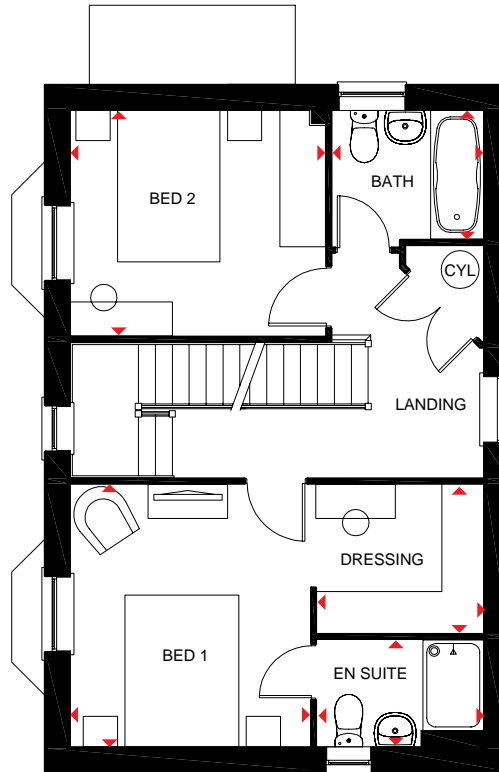
## Key

ST	Store	wm	Washing machine space	◀▶	Dimension location
CYL	Cylinder	dw	Dishwasher space		
f/f	Fridge/freezer space	td	Tumble dryer space		



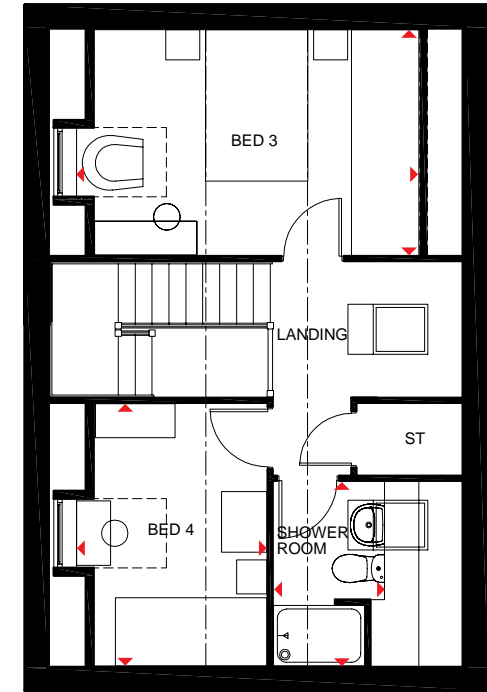
### Ground Floor

Lounge	5852 x 3242 mm	19'2" x 10'7"
Kitchen/Dining	5852 x 4142 mm	19'2" x 13'7"
Utility	1688 x 1791 mm	5'6" x 5'10"
WC	1500 x 920 mm	4'11" x 3'0"



### First Floor

Bed 1	3462 x 3166 mm	11'4" x 10'4"
En suite	2200 x 1410 mm	7'2" x 4'7"
Dressing	2200 x 1963 mm	7'2" x 6'5"
Bed 2	3366 x 2978 mm	11'0" x 9'9"
Bath	2000 x 1700 mm	6'6" x 5'6"



### Second Floor

Bed 3	4540* x 2978 mm	14'10"* x 9'9"
Bed 4	3462 x 2537* mm	11'4" x 8'3"*
Shower room	2432 x 1464* mm	7'11" x 4'9"*

\*Overall floor dimension includes lowered ceiling areas

We are on the New Homes Quality Code register of registered developers. "We" refers to the Barratt Developments PLC group brands including Barratt London, Barratt Homes and David Wilson Homes. All images used are for illustrative purposes. These and the dimensions given are illustrative for this house type and individual properties may differ. Please check with your Sales Adviser in respect of individual properties. We give maximum dimensions within each room which includes areas of fixtures and fittings including fitted furniture. These dimensions should not be used for carpet or flooring sizes, appliance spaces or items of furniture. All images, photographs and dimensions are not intended to be relied upon for, nor to form part of, any contract unless specifically incorporated in writing into the contract. H470--7DS00 / SP 341684

