




**WOODLANDS EDGE**  
BEREWOOD

Creating Better Life Experiences.  
One Home at a Time.

  
Woodland Edge Sales & Marketing Suite  
Berewood, Newlands Avenue, Waterlooville, PO7 3BX

 02394 271 188



LAWRENCE  
THREE  
BEDROOM  
HOME

BLOOR HOMES



A three bedroom detached home with a substantial lounge and an impressive open plan kitchen / dining area with French doors leading to the rear garden. Upstairs boasts three generous bedrooms with the master benefitting from an en suite shower room.

LAWRENCE

A STYLISH THREE BEDROOM  
DETACHED HOME

**LAWRENCE  
THREE  
BEDROOM  
HOME**

**FIRST FLOOR:**

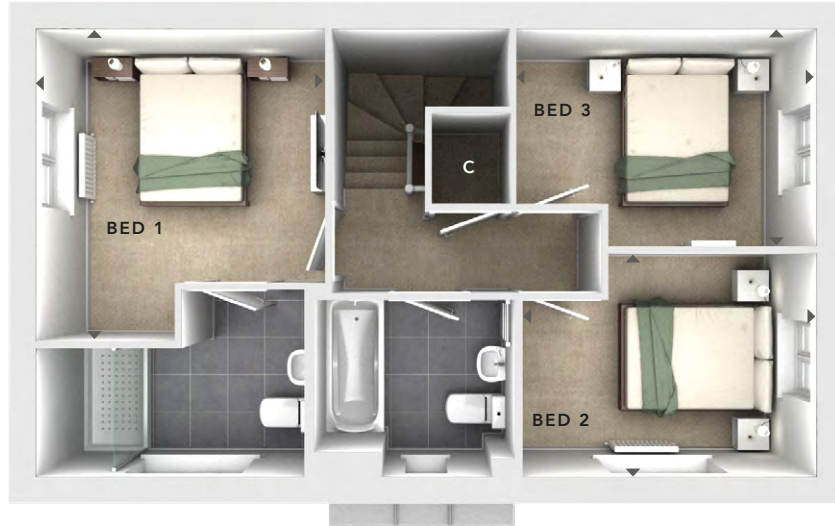
**BEDROOM 1**  
3.21m x 3.48m  
10'6" x 11'5"

**EN SUITE**

**BEDROOM 2**  
3.31m x 2.45m  
10'10" x 8'0"

**BEDROOM 3**  
3.33m x 2.43m  
10'11" x 7'11"

**BATHROOM**



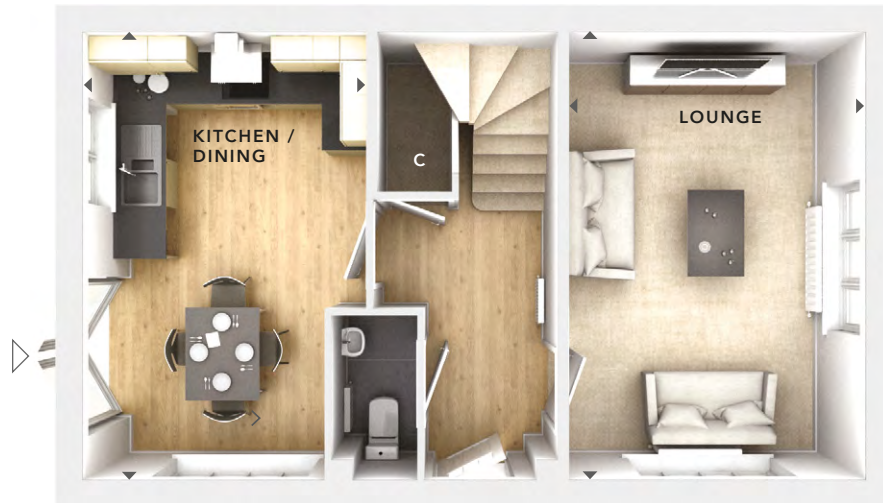
**FIRST  
FLOOR**

**GROUND FLOOR:**

**LOUNGE**  
3.26m x 4.95m  
10'8" x 16'3"

**KITCHEN / DINING**  
3.21m x 4.95m  
10'6" x 16'3"

**CLOAKS**



**GROUND  
FLOOR**

<b>C</b>	- Storage
△	- External Access
◀▶	- Measurement Points
© Bloor Homes • 301R 4.11	



These particulars are intended as a preliminary guide for prospective purchasers and should not be relied upon. The elevational treatment for individual house types shows a typical arrangement. Details of materials and design treatments may vary. Any artist impressions shown are not intended to represent any particular plot. Purchasers are advised to inspect the layout plan to establish the arrangement of the house and surrounding property. Internal layouts show a general arrangement which may vary from plot to plot. Room sizes given are approx. overall finished room sizes and subject to normal building tolerances (ie ± 75mm). In all instances purchasers are advised to inspect plot specific information available from our sales team. Nothing in these particulars or verbal assurance shall form or constitute part of any contract, and are given without any responsibility on behalf of Bloor Homes.



DRAKE  
TWO  
BEDROOM  
HOME

BLOOR HOMES



A two bedroom terraced home with a perfectly proportioned lounge and a stunning open plan kitchen / dining area with a utility, cloakroom and French doors opening onto the rear garden. Upstairs is home to the family bathroom and two spacious double bedrooms with ample room for storage.

DRAKE

A STYLISH TWO BEDROOM  
TERRACED HOME

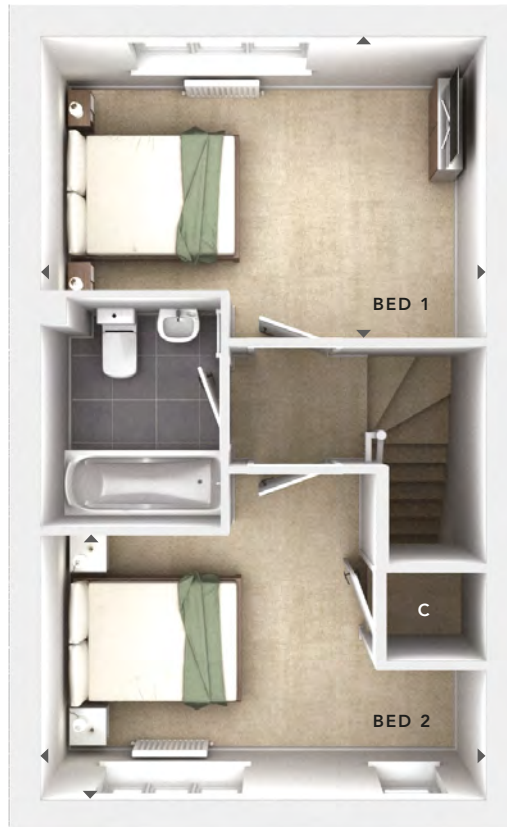
**DRAKE  
TWO  
BEDROOM  
HOME**

**FIRST FLOOR:**

**BEDROOM 1**  
4.22m x 2.86m  
13'10" x 9'4"

**BEDROOM 2**  
4.22m x 2.50m  
13'10" x 8'2"

**BATHROOM**



**GROUND FLOOR:**

**LOUNGE**  
3.10m x 4.17m  
10'2" x 13'8"

**KITCHEN / DINING**  
3.09m x 3.01m  
10'2" x 9'10"

**UTILITY**  
1.05m x 1.70m  
3'5" x 5'7"

**CLOAKS**

**FIRST  
FLOOR**



**GROUND  
FLOOR**

<b>C</b>	- Storage
△	- External Access
◄►	- Measurement Points
© Bloor Homes • 811B 4.5	



These particulars are intended as a preliminary guide for prospective purchasers and should not be relied upon. The elevational treatment for individual house types shows a typical arrangement. Details of materials and design treatments may vary. Any artist impressions shown are not intended to represent any particular plot. Purchasers are advised to inspect the layout plan to establish the arrangement of the house and surrounding property. Internal layouts show a general arrangement which may vary from plot to plot. Room sizes given are approx. overall finished room sizes and subject to normal building tolerances (ie ± 75mm). In all instances purchasers are advised to inspect plot specific information available from our sales team. Nothing in these particulars or verbal assurance shall form or constitute part of any contract, and are given without any responsibility on behalf of Bloor Homes.



**MAKENZIE  
THREE  
BEDROOM  
HOME**

**BLOOR HOMES**



A three bedroom semi-detached family home offering a charming lounge and stunning open plan kitchen / dining area with French doors leading to the rear garden. Downstairs also comprises a convenient utility area and cloakroom. The master suite occupies the whole of the second floor and benefits from an en suite shower room.

**MAKENZIE**

A BEAUTIFUL THREE  
BEDROOM SEMI-DETACHED  
FAMILY HOME

# MAKENZIE THREE BEDROOM HOME

## GROUND FLOOR:

**LOUNGE**  
3.24m x 4.46m  
10'8" x 14'8"

**KITCHEN / DINING**  
3.20m x 3.74m  
10'6" x 12'3"

**UTILITY**  
1.05m x 2.00m  
3'5" x 6'7"

**CLOAKS**

## FIRST FLOOR:

**BEDROOM 2**  
4.32m x 2.84m  
14'2" x 9'4"

**BEDROOM 3**  
2.24m x 3.16m  
7'4" x 10'4"

**BATHROOM**

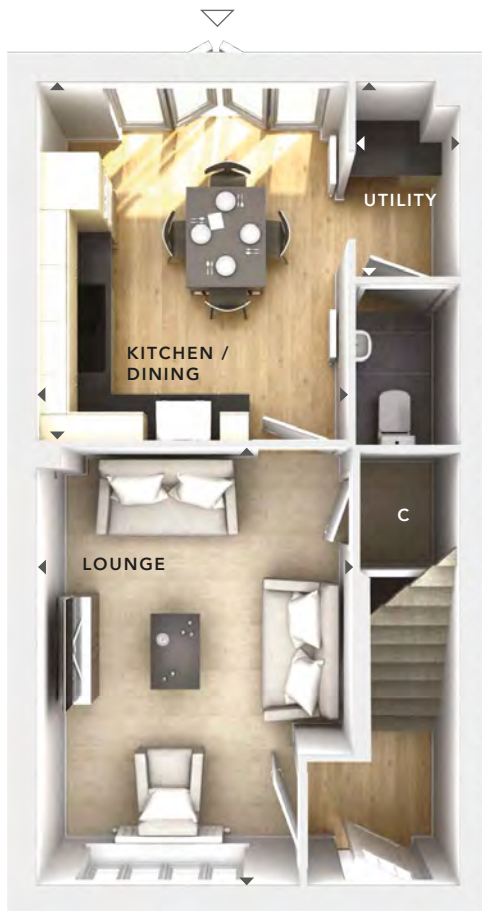
## SECOND FLOOR:

**BEDROOM 1**  
3.21m x 5.55m  
10'6" x 18'3"

**EN SUITE**



SECOND  
FLOOR



GROUND  
FLOOR



FIRST  
FLOOR

- C** - Storage
- △ - External Access
- ◀▶ - Measurement Points

© Bloor Homes • 384B 4.9

**BLOOR HOMES**

These particulars are intended as a preliminary guide for prospective purchasers and should not be relied upon. The elevational treatment for individual house types shows a typical arrangement. Details of materials and design treatments may vary. Any artist impressions shown are not intended to represent any particular plot. Purchasers are advised to inspect the layout plan to establish the arrangement of the house and surrounding property. Internal layouts show a general arrangement which may vary from plot to plot. Room sizes given are approx. overall finished room sizes and subject to normal building tolerances (ie ± 75mm). In all instances purchasers are advised to inspect plot specific information available from our sales team. Nothing in these particulars or verbal assurance shall form or constitute part of any contract, and are given without any responsibility on behalf of Bloor Homes.



MORRIS  
FOUR  
BEDROOM  
HOME

BLOOR HOMES



A four bedroom detached home with spacious lounge and fantastic open plan kitchen / dining area featuring French doors leading to the garden. Downstairs also comprises a utility cupboard and cloakroom. Upstairs, the first floor is home to the family bathroom and three bedrooms. The second floor boasts a generously sized master bedroom featuring fitted wardrobes and an en suite shower room.

MORRIS

A BEAUTIFUL THREE STOREY  
FOUR BEDROOM HOME



# MORRIS FOUR BEDROOM HOME

## GROUND FLOOR:

### LOUNGE

3.36m x 4.61m  
11'0" x 15'2"

### KITCHEN / DINING

6.20m x 3.11m  
20'4" x 10'3"

### UTILITY CUPBOARD

### CLOAKS

## FIRST FLOOR:

### BEDROOM 2

3.78m x 3.15m  
12'5" x 10'4"

### EN SUITE

### BEDROOM 3

3.42m x 3.05m  
11'3" x 10'0"

### BEDROOM 4

2.86m x 2.28m  
9'5" x 7'6"

### BATHROOM

## SECOND FLOOR:

### BEDROOM 1

3.64m x 4.17m  
11'11" x 13'8"

### EN SUITE



SECOND  
FLOOR



GROUND  
FLOOR



FIRST  
FLOOR

- W - Fitted Wardrobes
- C - Storage
- U - Utility Cupboard
- △ - External Access
- ◀▶ - Measurement Points

© Bloor Homes • 477B 4.5

**BLOOR HOMES**

These particulars are intended as a preliminary guide for prospective purchasers and should not be relied upon. The elevational treatment for individual house types shows a typical arrangement. Details of materials and design treatments may vary. Any artist impressions shown are not intended to represent any particular plot. Purchasers are advised to inspect the layout plan to establish the arrangement of the house and surrounding property. Internal layouts show a general arrangement which may vary from plot to plot. Room sizes given are approx. overall finished room sizes and subject to normal building tolerances (ie ± 75mm). In all instances purchasers are advised to inspect plot specific information available from our sales team. Nothing in these particulars or verbal assurance shall form or constitute part of any contract, and are given without any responsibility on behalf of Bloor Homes.

LYTTELTON  
THREE  
BEDROOM  
HOME

BLOOR HOMES



A three bedroom home with a substantial lounge and an impressive open plan kitchen / dining area with French doors leading to the rear garden. Upstairs boasts three bedrooms, the master bedroom benefits from an en suite shower room.

LYTTELTON

A STYLISH THREE  
BEDROOM HOME



**LYTTELTON  
THREE  
BEDROOM  
HOME**

**FIRST FLOOR:**

**BEDROOM 1**  
3.39m x 2.75m  
11'1" x 9'0"

**EN SUITE**

**BEDROOM 2**  
2.63m x 3.28m  
8'7" x 10'9"

**BEDROOM 3**  
2.05m x 3.26m  
6'9" x 10'8"

**BATHROOM**



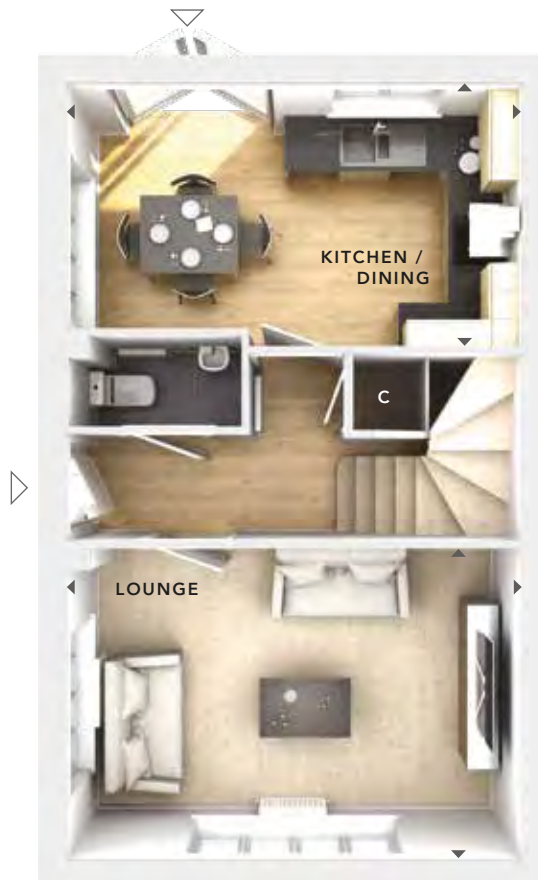
**FIRST  
FLOOR**

**GROUND FLOOR:**

**LOUNGE**  
4.75m x 3.26m  
15'7" x 10'8"

**KITCHEN / DINING**  
4.75m x 2.75m  
15'7" x 9'0"

**CLOAKS**



**GROUND  
FLOOR**

<b>C</b>	- Storage
	- External Access
	- Measurement Points
<b>© Bloor Homes • 818R 4.2</b>	



These particulars are intended as a preliminary guide for prospective purchasers and should not be relied upon. The elevational treatment for individual house types shows a typical arrangement. Details of materials and design treatments may vary. Any artist impressions shown are not intended to represent any particular plot. Purchasers are advised to inspect the layout plan to establish the arrangement of the house and surrounding property. Internal layouts show a general arrangement which may vary from plot to plot. Room sizes given are approx. overall finished room sizes and subject to normal building tolerances (ie ± 75mm). In all instances purchasers are advised to inspect plot specific information available from our sales team. Nothing in these particulars or verbal assurance shall form or constitute part of any contract, and are given without any responsibility on behalf of Bloor Homes.

**PEELE  
FOUR  
BEDROOM  
HOME**

**BLOOR HOMES**



A four bedroom detached home featuring a generously sized lounge, study, an outstanding open plan kitchen / dining / family area with a utility cupboard and French doors opening onto the rear garden. Upstairs is home to four double bedrooms, two with an en suite shower room and the master bedroom complete with fitted wardrobes.

**PEELE**

A BEAUTIFUL FOUR  
BEDROOM FAMILY HOME



**PEELE  
FOUR  
BEDROOM  
HOME**

**FIRST FLOOR:**

**BEDROOM 1**  
2.77m x 3.91m  
9'1" x 12'10"

**EN SUITE**

**BEDROOM 2**  
2.85m x 4.56m  
9'4" x 14'11"

**EN SUITE**

**BEDROOM 3**  
3.50m x 2.98m  
11'6" x 9'9"

**BEDROOM 4**  
3.42m x 2.98m  
11'3" x 9'9"

**BATHROOM**

**GROUND FLOOR:**

**LOUNGE**  
3.81m x 5.24m  
12'6" x 17'2"

**KITCHEN / DINING /  
FAMILY**  
5.59m x 7.62m  
18'4" x 25'0"

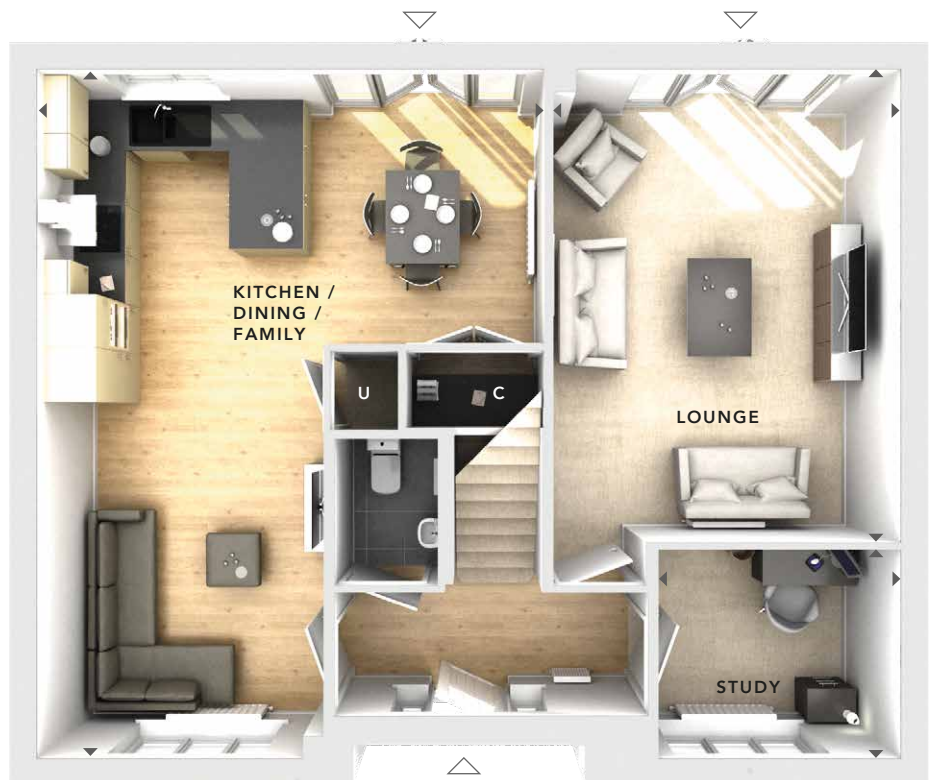
**UTILITY CUPBOARD**

**STUDY**  
2.66m x 2.30m  
8'9" x 7'7"

**CLOAKS**



**FIRST  
FLOOR**



**GROUND  
FLOOR**

- W - Fitted Wardrobes
- C - Storage
- U - Utility Cupboard
- △ - External Access
- ◀▶ - Measurement Points

© Bloor Homes • 482B 4.8

**BLOOR HOMES**

These particulars are intended as a preliminary guide for prospective purchasers and should not be relied upon. The elevational treatment for individual house types shows a typical arrangement. Details of materials and design treatments may vary. Any artist impressions shown are not intended to represent any particular plot. Purchasers are advised to inspect the layout plan to establish the arrangement of the house and surrounding property. Internal layouts show a general arrangement which may vary from plot to plot. Room sizes given are approx. overall finished room sizes and subject to normal building tolerances (ie ± 75mm). In all instances purchasers are advised to inspect plot specific information available from our sales team. Nothing in these particulars or verbal assurance shall form or constitute part of any contract, and are given without any responsibility on behalf of Bloor Homes.

HILLCOTT  
FOUR  
BEDROOM  
HOME

BLOOR HOMES



A four bedroom detached home with spacious lounge and fantastic open plan kitchen / dining and family area featuring a bay window and French doors leading to the rear garden. Upstairs, there are four bedrooms with the master bedroom benefitting from fitted wardrobes and en suite facilities.

HILLCOTT

A STUNNING FOUR BEDROOM  
DETACHED HOME



**HILLCOTT  
FOUR  
BEDROOM  
HOME**

**FIRST FLOOR:**

**BEDROOM 1**  
2.79m x 3.28m  
9'2" x 10'9"

**EN SUITE**

**BEDROOM 2**  
3.81m x 3.18m  
12'6" x 10'5"

**BEDROOM 3**  
2.37m x 3.15m  
7'9" x 10'4"

**BEDROOM 4**  
2.83m x 2.31m  
9'3" x 7'7"

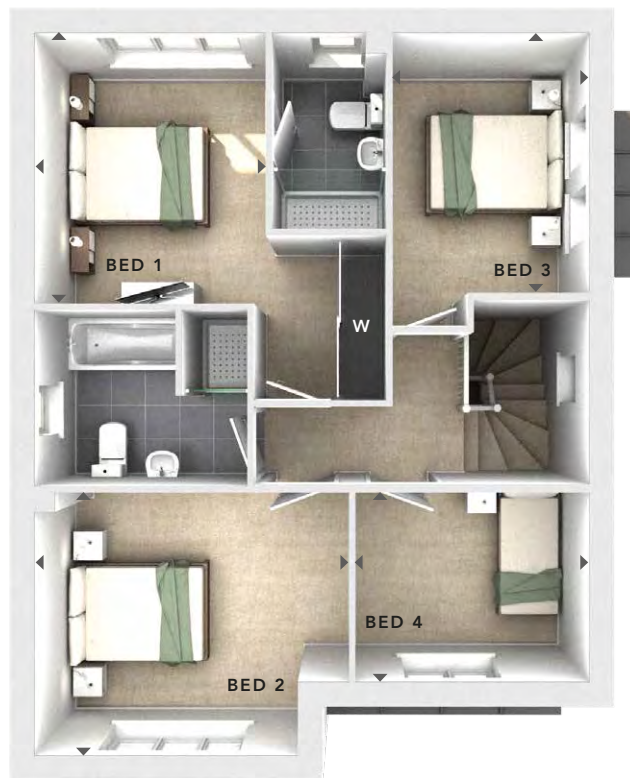
**BATHROOM**

**GROUND FLOOR:**

**LOUNGE**  
3.76m x 4.77m  
12'4" x 15'8"

**KITCHEN / DINING**  
6.71m x 3.85m  
22'0" x 12'8"

**CLOAKS**



**FIRST FLOOR**



**GROUND FLOOR**

W	- Fitted Wardrobes
U	- Utility Cupboard
△	- External Access
◀▶	- Measurement Points
© Bloor Homes • 400R 4.3	



These particulars are intended as a preliminary guide for prospective purchasers and should not be relied upon. The elevational treatment for individual house types shows a typical arrangement. Details of materials and design treatments may vary. Any artist impressions shown are not intended to represent any particular plot. Purchasers are advised to inspect the layout plan to establish the arrangement of the house and surrounding property. Internal layouts show a general arrangement which may vary from plot to plot. Room sizes given are approx. overall finished room sizes and subject to normal building tolerances (i.e. ± 75mm). In all instances purchasers are advised to inspect plot specific information available from our sales team. Nothing in these particulars or verbal assurance shall form or constitute part of any contract, and are given without any responsibility on behalf of Bloor Homes.

SAXONDALE  
THREE  
BEDROOM  
HOME

BLOOR HOMES



A three bedroom detached home with a spacious lounge and fantastic open plan kitchen / dining / family area featuring French doors leading to the rear garden. Upstairs, all bedrooms benefit from an en suite shower room with the master comprising of a bathroom and dressing room.

SAXONDALE

AN OUTSTANDING  
THREE BEDROOM HOME



**SAXONDALE  
THREE  
BEDROOM  
HOME**

**FIRST FLOOR:**

**BEDROOM 1**  
3.76m x 3.89m  
12'4" x 12'8"

**DRESSING AREA**  
3.11m x 1.80m  
10'2" x 5'11"

**EN SUITE**

**BEDROOM 2**  
3.04m x 3.55m  
10'0" x 11'8"

**EN SUITE**

**BEDROOM 3**  
2.86m x 3.36m  
9'4" x 11'0"

**EN SUITE**

**GROUND FLOOR:**

**LOUNGE**  
3.72m x 4.55m  
12'3" x 14'11"

**KITCHEN / DINING**  
9.09m x 3.52m  
29'10" x 11'7"

**CLOAKS**

**GARAGE**



**FIRST FLOOR**



**GROUND FLOOR**

W	- Fitted Wardrobes
C	- Storage
△	- External Access
◀▶	- Measurement Points
© Bloor Homes • 396B 4.7	



These particulars are intended as a preliminary guide for prospective purchasers and should not be relied upon. The elevational treatment for individual house types shows a typical arrangement. Details of materials and design treatments may vary. Any artist impressions shown are not intended to represent any particular plot. Purchasers are advised to inspect the layout plan to establish the arrangement of the house and surrounding property. Internal layouts show a general arrangement which may vary from plot to plot. Room sizes given are approx. overall finished room sizes and subject to normal building tolerances (ie ± 75mm). In all instances purchasers are advised to inspect plot specific information available from our sales team. Nothing in these particulars or verbal assurance shall form or constitute part of any contract, and are given without any responsibility on behalf of Bloor Homes.

HARWOOD  
FOUR  
BEDROOM  
HOME

BLOOR HOMES



A four bedroom detached home comprising a spacious lounge and impressive kitchen / dining / family area with a bay window, both feature beautiful French doors opening onto the rear garden. Downstairs also includes a convenient utility cupboard, study and cloakroom. Upstairs boasts four double bedrooms and the family bathroom, complete with a bath and separate shower enclosure. The master bedroom features fitted wardrobes and an en suite shower room.

HARWOOD

AN OUTSTANDING FOUR  
BEDROOM FAMILY HOME



**HARWOOD  
FOUR  
BEDROOM  
HOME**

**FIRST FLOOR:**

**BEDROOM 1**  
3.73m x 3.01m  
12'3" x 9'10"

**EN SUITE**

**BEDROOM 2**  
3.55m x 3.66m  
11'8" x 12'0"

**BEDROOM 3**  
3.57m x 2.93m  
11'8" x 9'7"

**BEDROOM 4**  
4.36m x 2.72m  
14'4" x 8'11"

**BATHROOM**



**FIRST  
FLOOR**

**GROUND FLOOR:**

**LOUNGE**  
3.59m x 4.79m  
11'9" x 15'8"

**KITCHEN / DINING /  
FAMILY**  
4.26m x 8.05m  
14'0" x 26'5"

**STUDY**  
3.16m x 2.23m  
10'4" x 7'4"

**UTILITY CUPBOARD**

**CLOAKS**



**GROUND  
FLOOR**

W	- Fitted Wardrobes
C	- Storage
U	- Utility Cupboard
△	- External Access
◀▶	- Measurement Points
© Bloor Homes • 481B 4.5	



These particulars are intended as a preliminary guide for prospective purchasers and should not be relied upon. The elevational treatment for individual house types shows a typical arrangement. Details of materials and design treatments may vary. Any artist impressions shown are not intended to represent any particular plot. Purchasers are advised to inspect the layout plan to establish the arrangement of the house and surrounding property. Internal layouts show a general arrangement which may vary from plot to plot. Room sizes given are approx. overall finished room sizes and subject to normal building tolerances (i.e. ± 75mm). In all instances purchasers are advised to inspect plot specific information available from our sales team. Nothing in these particulars or verbal assurance shall form or constitute part of any contract, and are given without any responsibility on behalf of Bloor Homes.

WYATT  
FOUR  
BEDROOM  
HOME

BLOOR HOMES



A four bedroom detached home comprising a spacious lounge with bay window and fantastic open plan kitchen / dining / family area, featuring French doors leading to the rear garden. Downstairs also comprises a utility cupboard and cloakroom. Upstairs, three of the four bedrooms are spacious doubles, with the master bedroom benefitting from fitted wardrobes and an en suite shower room.

WYATT

A SPACIOUS DETACHED FOUR  
BEDROOM FAMILY HOME



**WYATT  
FOUR  
BEDROOM  
HOME**

**FIRST FLOOR:**

**BEDROOM 1**  
2.88m x 3.68m  
9'6" x 12'1"

**EN SUITE**

**BEDROOM 2**  
3.95m x 2.47m  
12'11" x 8'1"

**BEDROOM 3**  
2.61m x 3.15m  
8'7" x 10'4"

**BEDROOM 4**  
3.18m x 2.28m  
10'5" x 7'6"

**BATHROOM**

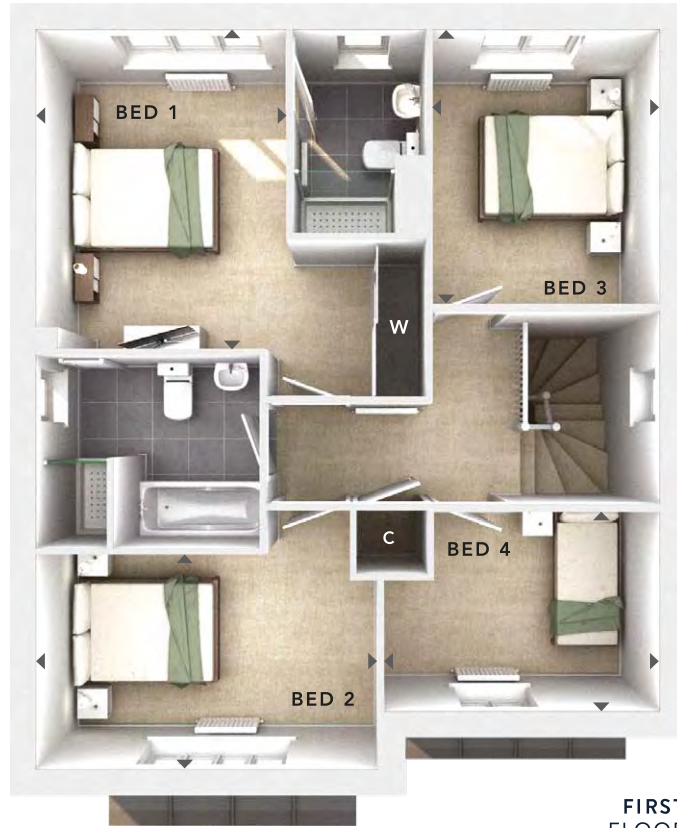
**GROUND FLOOR:**

**LOUNGE**  
4.11m x 4.15m  
13'6" x 13'7"

**KITCHEN / DINING /  
FAMILY**  
7.20m x 4.25m  
23'8" x 13'11"

**UTILITY CUPBOARD**

**CLOAKS**



**FIRST  
FLOOR**



**GROUND  
FLOOR**

W	- Fitted Wardrobes
C	- Storage
U	- Utility Cupboard
△	- External Access
◀▶	- Measurement Points
© Bloor Homes • 476B 4.7	



These particulars are intended as a preliminary guide for prospective purchasers and should not be relied upon. The elevational treatment for individual house types shows a typical arrangement. Details of materials and design treatments may vary. Any artist impressions shown are not intended to represent any particular plot. Purchasers are advised to inspect the layout plan to establish the arrangement of the house and surrounding property. Internal layouts show a general arrangement which may vary from plot to plot. Room sizes given are approx. overall finished room sizes and subject to normal building tolerances (ie ± 75mm). In all instances purchasers are advised to inspect plot specific information available from our sales team. Nothing in these particulars or verbal assurance shall form or constitute part of any contract, and are given without any responsibility on behalf of Bloor Homes.

WOLLATON  
FOUR  
BEDROOM  
HOME

BLOOR HOMES



A four bedroom detached home with spacious lounge and fantastic open plan kitchen / dining and family area featuring a bay window and French doors leading to the rear garden. Upstairs, there are four bedrooms with the master bedroom benefitting from fitted wardrobes and en suite facilities.

WOLLATON

A STUNNING FOUR BEDROOM  
DETACHED HOME



**WOLLATON  
FOUR  
BEDROOM  
HOME**

**FIRST FLOOR:**

**BEDROOM 1**  
2.88m x 3.68m  
9'6" x 12'1"

**EN SUITE**

**BEDROOM 2**  
3.95m x 2.47m  
12'11" x 8'1"

**BEDROOM 3**  
2.61m x 3.15m  
8'7" x 10'4"

**BEDROOM 4**  
3.18m x 2.28m  
10'5" x 7'6"

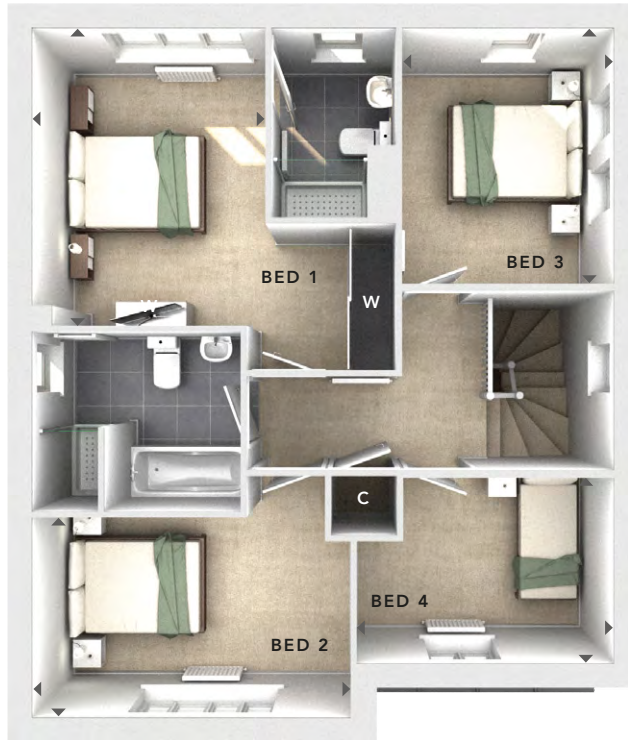
**BATHROOM**

**GROUND FLOOR:**

**LOUNGE**  
4.11m x 4.15m  
13'6" x 13'7"

**KITCHEN / DINING**  
7.20m x 4.25m  
23'8" x 13'11"

**CLOAKS**



**FIRST FLOOR**



**GROUND FLOOR**

<b>C</b>	- Storage
<b>W</b>	- Fitted Wardrobes
<b>U</b>	- Utility Cupboard
△	- External Access
◀▶	- Measurement Points
<b>© Bloor Homes • 401B 4.3</b>	



These particulars are intended as a preliminary guide for prospective purchasers and should not be relied upon. The elevational treatment for individual house types shows a typical arrangement. Details of materials and design treatments may vary. Any artist impressions shown are not intended to represent any particular plot. Purchasers are advised to inspect the layout plan to establish the arrangement of the house and surrounding property. Internal layouts show a general arrangement which may vary from plot to plot. Room sizes given are approx. overall finished room sizes and subject to normal building tolerances (i.e. ± 75mm). In all instances purchasers are advised to inspect plot specific information available from our sales team. Nothing in these particulars or verbal assurance shall form or constitute part of any contract, and are given without any responsibility on behalf of Bloor Homes.

HALLAM  
FOUR  
BEDROOM  
HOME

BLOOR HOMES



A four bedroom detached home featuring a spacious lounge, open plan kitchen / dining / family area with French doors to the rear garden. A utility cupboard and cloakroom complete this floor. Upstairs is home to four bedrooms, two of which are double and the master bedroom boasting fitted wardrobes and an en suite shower room.

HALLAM

A SPACIOUS FOUR  
BEDROOM FAMILY HOME



# HALLAM FOUR BEDROOM HOME

## FIRST FLOOR:

**BEDROOM 1**  
2.58m x 3.15m  
8'5" x 10'4"

## EN SUITE

**BEDROOM 2**  
3.57m x 2.45m  
11'8" x 8'0"

**BEDROOM 3**  
2.03m x 3.15m  
6'8" x 10'4"

**BEDROOM 4**  
2.56m x 2.28m  
8'5" x 7'6"

## BATHROOM

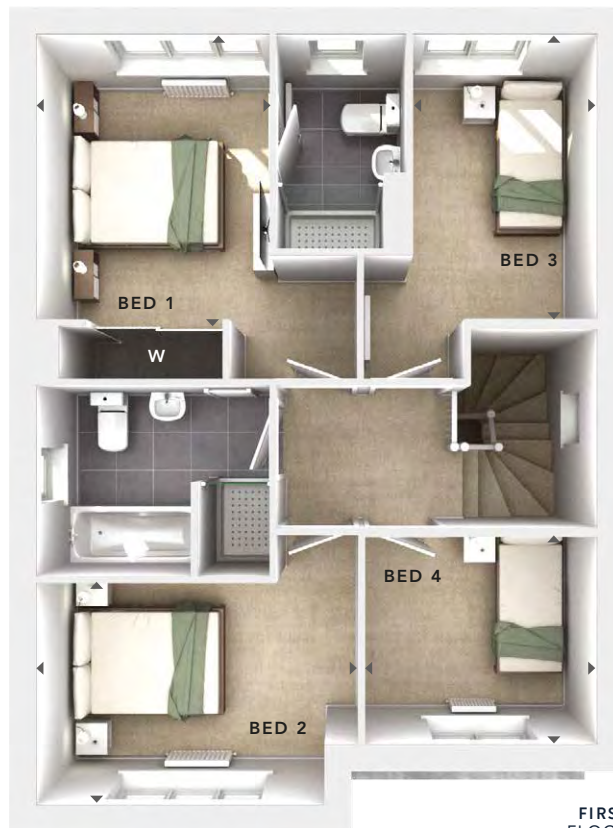
## GROUND FLOOR:

**LOUNGE**  
3.35m x 4.64m  
11'0" x 15'3"

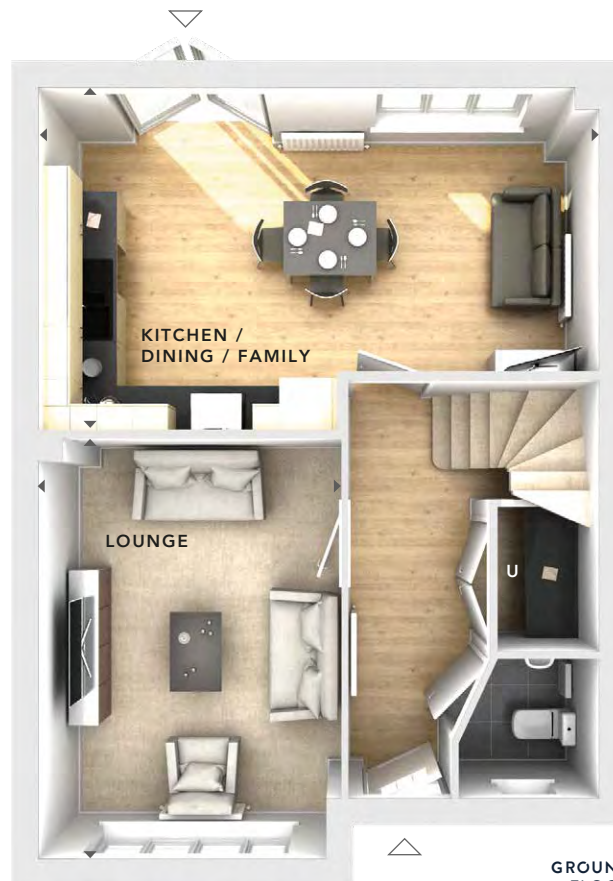
**KITCHEN /  
DINING / FAMILY**  
6.20m x 3.76m  
20'4" x 12'4"

## UTILITY CUPBOARD

## CLOAKS



FIRST  
FLOOR



GROUND  
FLOOR

- W** - Fitted Wardrobes
- U** - Utility Cupboard
- △ - External Access
- ◀▶ - Measurement Points

© Bloor Homes • 470B 4.4

**BLOOR HOMES**

These particulars are intended as a preliminary guide for prospective purchasers and should not be relied upon. The elevational treatment for individual house types shows a typical arrangement. Details of materials and design treatments may vary. Any artist impressions shown are not intended to represent any particular plot. Purchasers are advised to inspect the layout plan to establish the arrangement of the house and surrounding property. Internal layouts show a general arrangement which may vary from plot to plot. Room sizes given are approx. overall finished room sizes and subject to normal building tolerances (ie ± 75mm). In all instances purchasers are advised to inspect plot specific information available from our sales team. Nothing in these particulars or verbal assurance shall form or constitute part of any contract, and are given without any responsibility on behalf of Bloor Homes.

**GROVIER  
THREE  
BEDROOM  
HOME**

**BLOOR HOMES**



A three bedroom semi-detached home with a perfectly proportioned lounge and a stunning open plan kitchen / dining room with a separate utility room, cloakroom and French doors opening onto the rear garden. Upstairs the spacious master suite is complete with an en suite shower room.

**GROVIER**

**A STYLISH THREE BEDROOM  
SEMI-DETACHED HOME**



**GROVIER  
THREE  
BEDROOM  
HOME**

**FIRST FLOOR:**

**BEDROOM 1**  
2.58m x 2.71m  
8'6" x 8'11"

**EN SUITE**

**BEDROOM 2**  
2.58m x 2.43m  
8'6" x 8'0"

**BEDROOM 3**  
1.95m x 2.30m  
6'5" x 7'7"

**BATHROOM**



**GROUND FLOOR:**

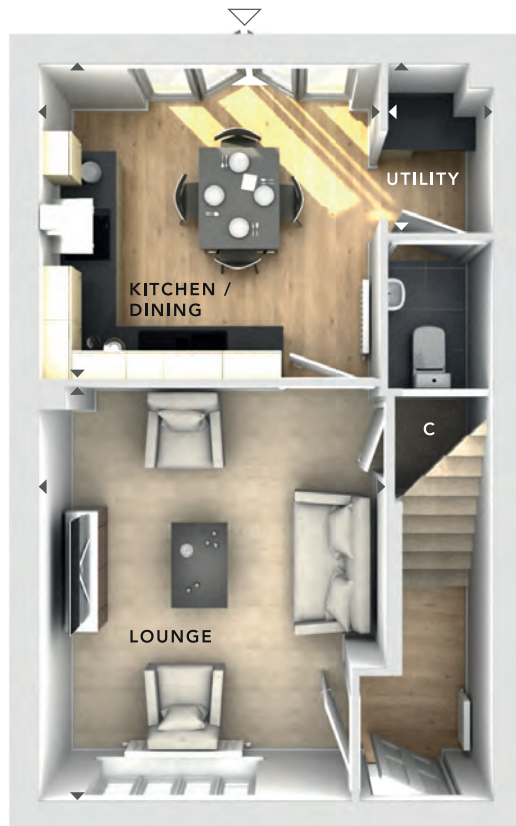
**LOUNGE**  
3.60m x 4.22m  
11'10" x 13'10"

**KITCHEN / DINING**  
3.48m x 3.19m  
11'5" x 10'5"

**UTILITY**  
1.05m x 1.70m  
3'5" x 5'7"

**CLOAKS**

**FIRST  
FLOOR**



**GROUND  
FLOOR**

<b>C</b>	- Storage
△	- External Access
◀▶	- Measurement Points
© Bloor Homes • 389B 4.4	



These particulars are intended as a preliminary guide for prospective purchasers and should not be relied upon. The elevational treatment for individual house types shows a typical arrangement. Details of materials and design treatments may vary. Any artist impressions shown are not intended to represent any particular plot. Purchasers are advised to inspect the layout plan to establish the arrangement of the house and surrounding property. Internal layouts show a general arrangement which may vary from plot to plot. Room sizes given are approx. overall finished room sizes and subject to normal building tolerances (i.e. ± 75mm). In all instances purchasers are advised to inspect plot specific information available from our sales team. Nothing in these particulars or verbal assurance shall form or constitute part of any contract, and are given without any responsibility on behalf of Bloor Homes.

DAWLISH  
FOUR  
BEDROOM  
HOME

BLOOR HOMES



A four bedroom detached home comprising a spacious lounge and impressive kitchen / dining / family area with a bay window, and French doors opening onto the rear garden. Downstairs also includes a utility, study and cloakroom. Upstairs boasts four double bedrooms and the family bathroom, complete with a bath and separate shower enclosure. Bedrooms 1 and 2 feature en-suite shower rooms with the master benefitting from fitted wardrobes.

DAWLISH

AN OUTSTANDING FOUR  
BEDROOM FAMILY HOME



**DAWLISH  
FOUR  
BEDROOM  
HOME**

**FIRST FLOOR:**

**BEDROOM 1**  
3.56m x 4.06m  
11'8" x 13'4"

**EN SUITE**

**BEDROOM 2**  
3.14m x 2.69m  
10'4" x 8'10"

**EN SUITE**

**BEDROOM 3**  
3.30m x 3.98m  
10'10" x 13'0"

**BEDROOM 4**  
3.23m x 3.39m  
10'7" x 11'2"

**BATHROOM**

**GROUND FLOOR:**

**LOUNGE**  
3.48m x 4.78m  
11'5" x 15'8"

**KITCHEN / DINING /  
FAMILY**  
9.07m x 3.95m  
29'9" x 13'0"

**STUDY**  
3.14m x 2.15m  
10'3" x 7'1"

**UTILITY CUPBOARD**  
1.99m x 1.89m  
6'6" x 6'2"

**CLOAKS**



**FIRST  
FLOOR**



**GROUND  
FLOOR**

W	- Fitted Wardrobes
C	- Storage
△	- External Access
◀▶	- Measurement Points
© Bloor Homes • 496R 4.3	



These particulars are intended as a preliminary guide for prospective purchasers and should not be relied upon. The elevational treatment for individual house types shows a typical arrangement. Details of materials and design treatments may vary. Any artist impressions shown are not intended to represent any particular plot. Purchasers are advised to inspect the layout plan to establish the arrangement of the house and surrounding property. Internal layouts show a general arrangement which may vary from plot to plot. Room sizes given are approx. overall finished room sizes and subject to normal building tolerances (i.e. ± 75mm). In all instances purchasers are advised to inspect plot specific information available from our sales team. Nothing in these particulars or verbal assurance shall form or constitute part of any contract, and are given without any responsibility on behalf of Bloor Homes.



**Bloor Homes**  
Ashby Road  
Measham  
Derbyshire  
DE12 7JP

hq@bloorhomes.com  
www.bloorhomes.com