



CALDER RISE

COTTAM

dwh.co.uk





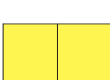

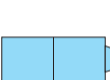







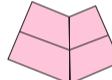
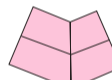









DAVID WILSON HOMES

WHERE QUALITY LIVES

Cottam Way, Cottam, Preston PR4 0RA

KEY

-  **The Archford**
3 bedroom home
 -  **The Fairway**
3 bedroom home
 -  **The Hadley**
3 bedroom home
 -  **The Kennett**
3 bedroom home
 -  **The Ingleby**
4 bedroom home
 -  **The Millford**
4 bedroom home
 -  **The Kirkdale**
4 bedroom home
 -  **The Herford**
4 bedroom home
 -  **The Bradgate**
4 bedroom home
 -  **The Avondale**
4 bedroom home
 -  **The Holden**
4 bedroom home
-
-  **Low Cost Homes**
 -  **The Atkinson**
3 bedroom home
 -  **The Heather**
3 bedroom home
 -  **The Critchley**
2 bedroom home
 -  **The Williams**
2 bedroom home
 -  **The Wilford**
2 bedroom home
 -  **The Chichester**
2 bedroom apartment
 -  **The Cherwell**
2 bedroom apartment

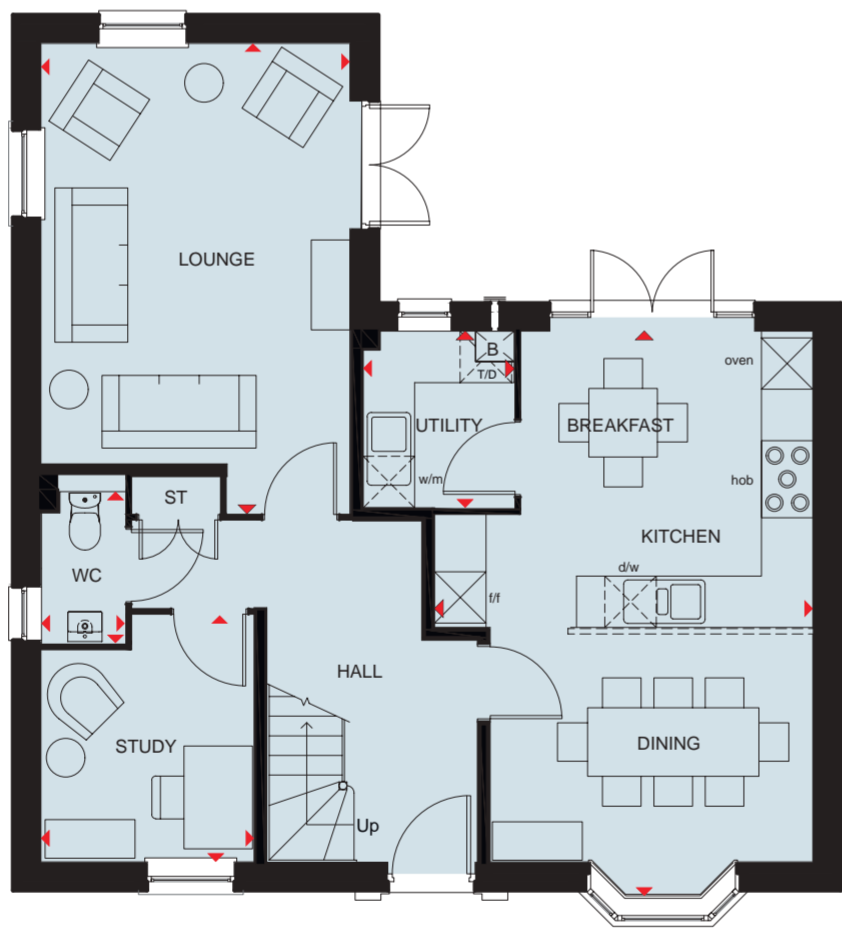
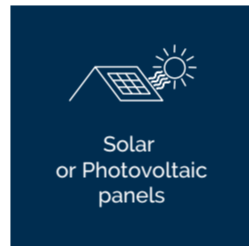
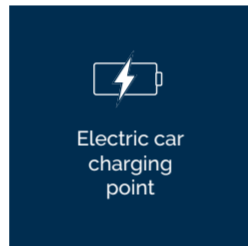
-  FOR SALE
-  RESERVED
-  CONDITIONALLY EXCHANGED
-  UNCONDITIONALLY EXCHANGED
-  LEGALLY COMPLETED

 Marketing Suite & Show Homes



THE AVONDALE

FOUR BEDROOM HOME



Ground Floor

Lounge	5488 x 3605 mm	18'0" x 11'10"
Kitchen/Breakfast/Dining	6590 x 4415 mm	21'7" x 14'6"
Utility	2060 x 1761 mm	6'9" x 5'9"
Study	2878 x 2488 mm	9'5" x 8'2"
WC	1768 x 975 mm	5'10" x 3'2"

First Floor

Bedroom 1	5585 x 3605 mm	18'3" x 11'10"
Ensuite	2222 x 1433 mm	7'3" x 4'8"
Bedroom 2	5225 x 2792 mm	17'1" x 9'2"
Bedroom 3	3563 x 3308 mm	11'8" x 10'10"
Bedroom 4	3853 x 2547 mm	12'7" x 8'4"
Bathroom	2871 x 1927 mm	9'5" x 6'4"

Key

B	Boiler	f/f	Fridge/freezer space	wm	Washing machine space	W	Wardrobe space
ST	Store	dw	Dishwasher space	td	Tumble dryer space	↔	Dimension location



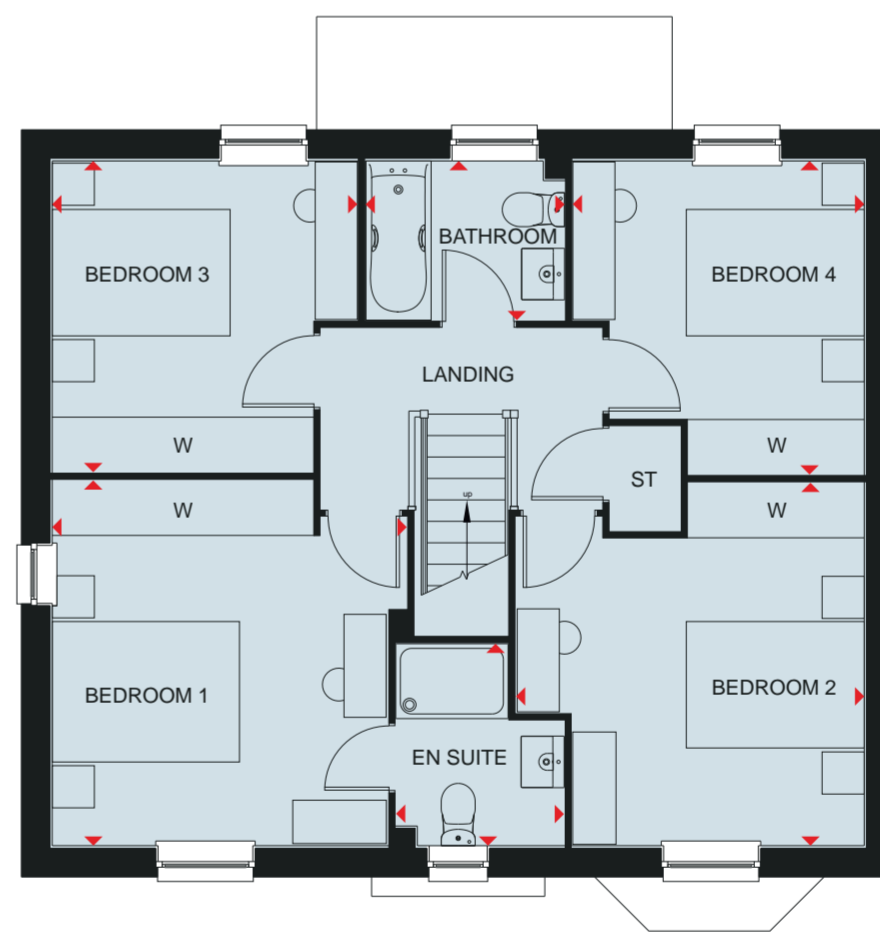
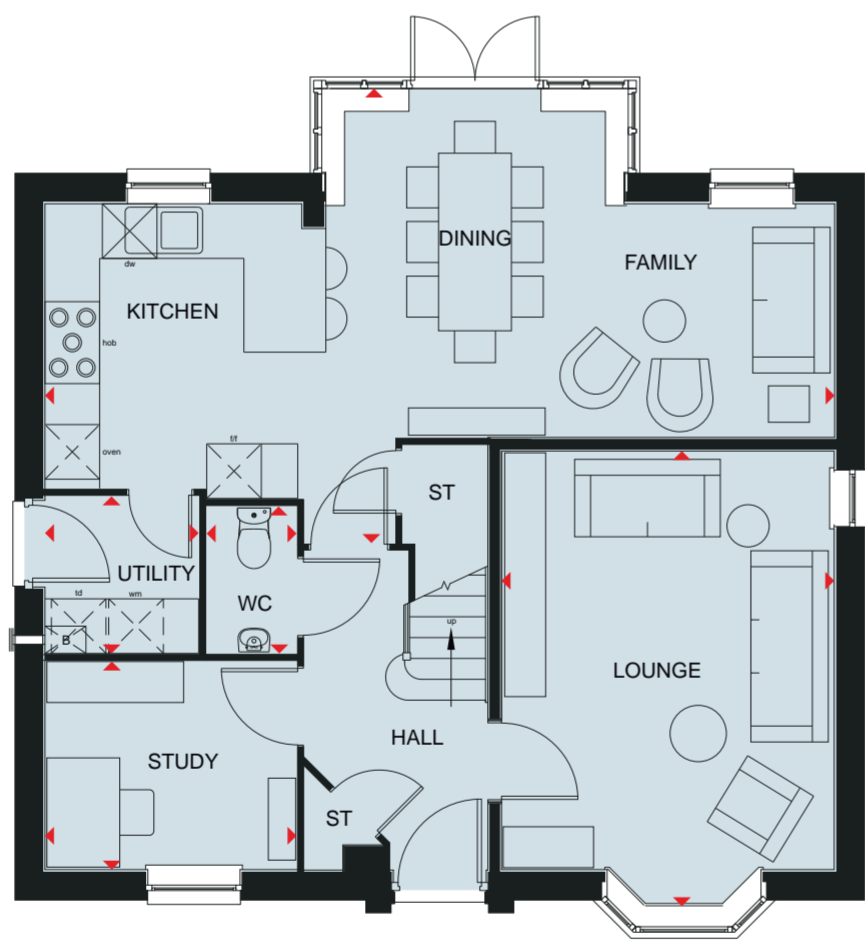
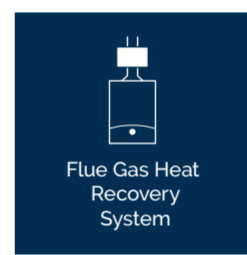
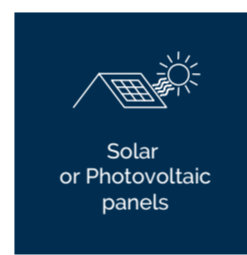
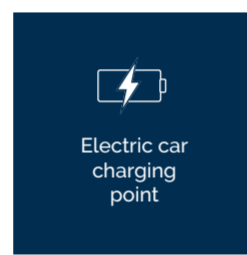
Scan here for more details



DAVID WILSON HOMES

THE BRADGATE

FOUR BEDROOM DETACHED HOME



Ground Floor

Lounge	4994 x 3653 mm	16'5" x 12'0"
Kitchen/Dining/Family	8673 x 4992 mm	28'5" x 16'5"
Study	2762 x 2285 mm	9'1" x 7'6"
Utility	1688 x 1725 mm	5'6" x 5'8"
WC	1614 x 987 mm	5'4" x 3'3"

* Window may be omitted on certain plots. Speak to a Sales Adviser for details on individual plots.

First Floor

Bedroom 1	3901 x 3786 mm	12'10" x 12'5"
En Suite	2157 x 1700 mm	7'1" x 5'11"
Bedroom 2	3720 x 3876 mm	12'2" x 12'9"
Bedroom 3	3324 x 3259 mm	10'11" x 10'8"
Bedroom 4	3349 x 3113 mm	11'0" x 10'3"
Bathroom	2125 x 1700 mm	7'0" x 5'7"

Key

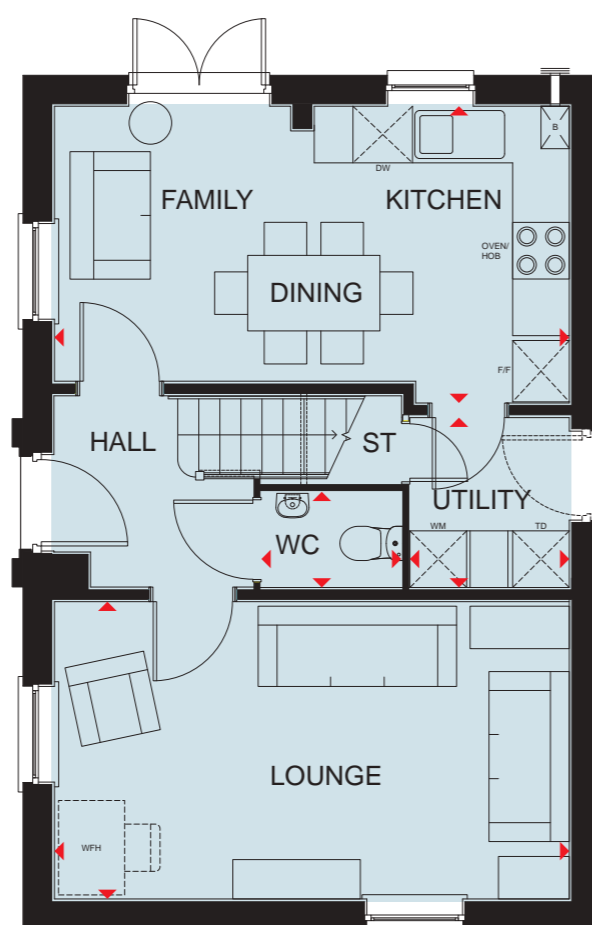
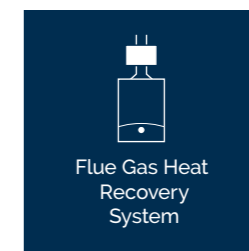
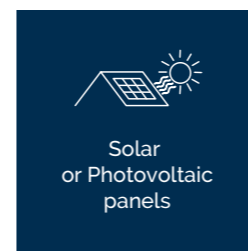
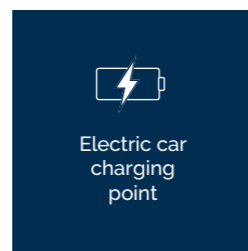
B	Boiler	dw	Dishwasher space	wm	Washing machine space	W	Wardrobe space
ST	Store	f/f	Fridge/freezer space	td	Tumble dryer space	↔	Dimension location



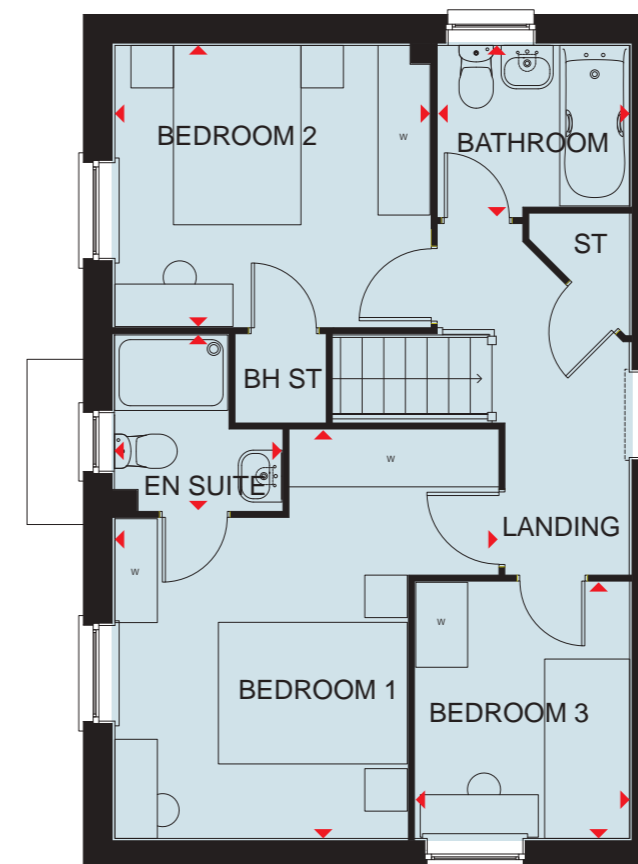
DAVID WILSON HOMES

HADLEY

THREE BEDROOM END OR DETACHED HOME



Ground Floor		
Lounge	5450 x 3148 mm	17'11" x 10'4"
Kitchen/Family/Dining	5450 x 3143 mm	17'11" x 10'4"
Utility	1799 x 1688 mm	5'11" x 5'6"
WC	1480 x 1014 mm	4'10" x 3'4"



First Floor		
Bedroom 1	4324 x 4053 mm	14'2" x 13'3"
En Suite	1856 x 1771 mm	6'1" x 5'9"
Bedroom 2	3336 x 2978 mm	11'3" x 9'9"
Bedroom 3	2713 x 2265 mm	8'11" x 7'5"
Bathroom	2025 x 1811 mm	6'8" x 6'0"

Key

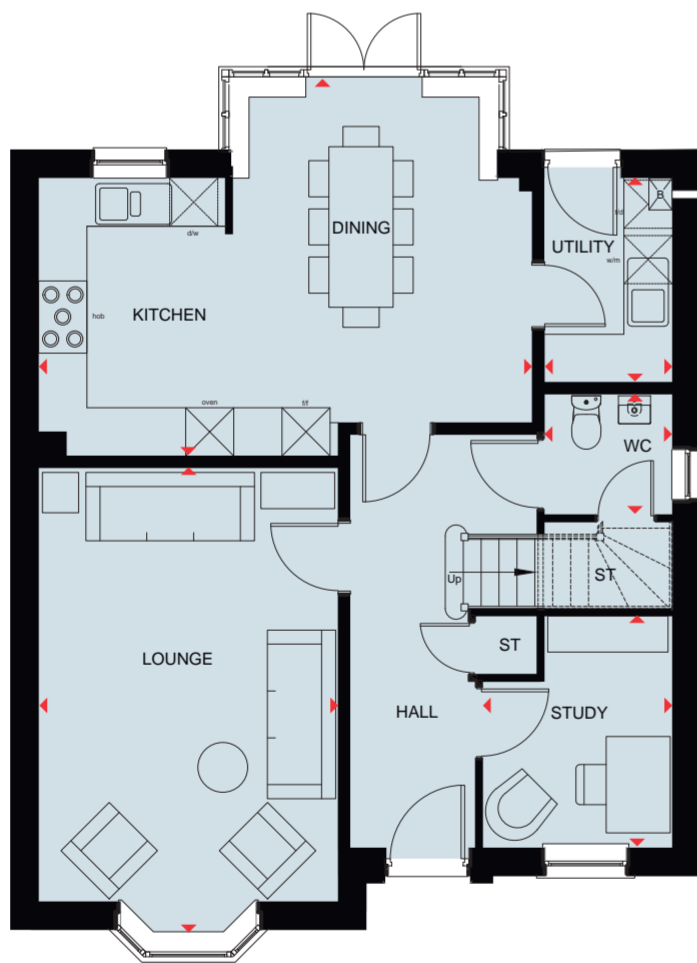
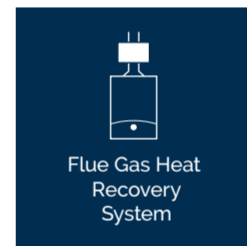
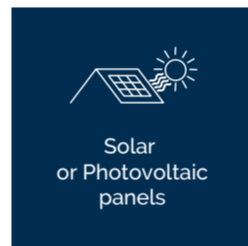
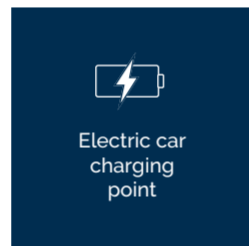
B	Boiler	wm	Washing machine space	dw	Dishwasher space	W	Wardrobe space	◀▶	Dimension location
ST	Store	f/f	Fridge/freezer space	TD	Tumble dryer	WFH	Working from home space		



DAVID WILSON HOMES

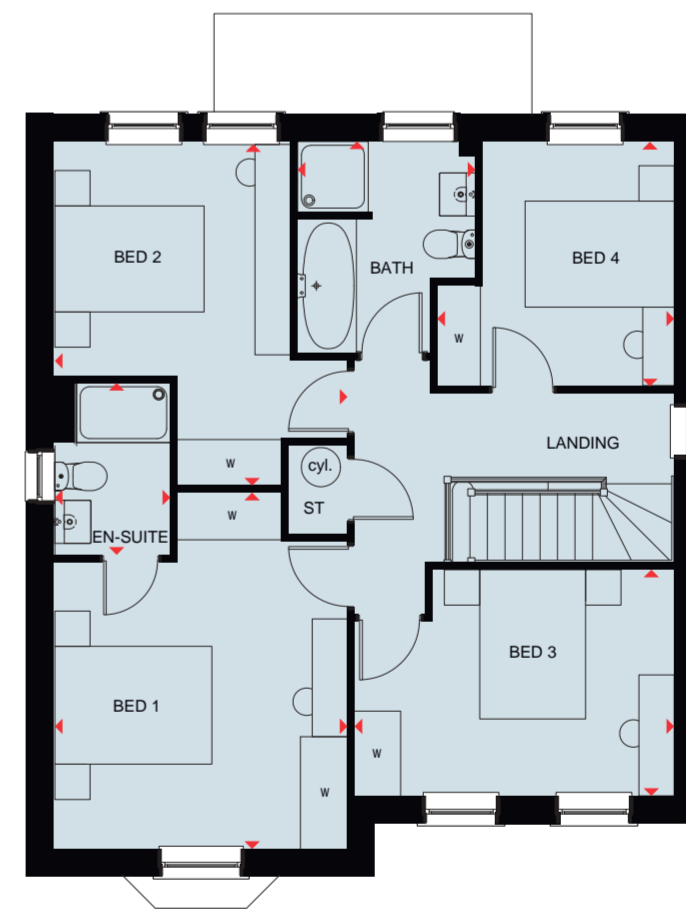
HOLDEN

FOUR BEDROOM DETACHED HOME



Ground Floor

Lounge	5797 x 3723 mm	19'0" x 12'3"
Kitchen/Dining	6142 x 4685 mm	20'2" x 15'4"
Study	2881 x 2361 mm	9'6" x 7'9"
Utility	2545 x 1588 mm	8'4" x 5'3"
WC	1498 x 1588 mm	4'11" x 5'3"



First Floor

Bedroom 1	4538 x 3728 mm	14'11" x 12'3"
En Suite	2190 x 1471 mm	7'2" x 4'10"
Bedroom 2	4379 x 3728 mm	14'4" x 12'3"
Bedroom 3	4073 x 2881 mm	13'4" x 9'5"
Bedroom 4	3115 x 3043 mm	10'3" x 10'0"
Bathroom	2689 x 2266 mm	8'10" x 7'5"

Key

B Boiler	W Wardrobe space	wm Washing machine space	CYL Cylinder	◀▶ Dimension location
ST Store	f/f Fridge/freezer space	dw Dishwasher space	td Tumble dryer	



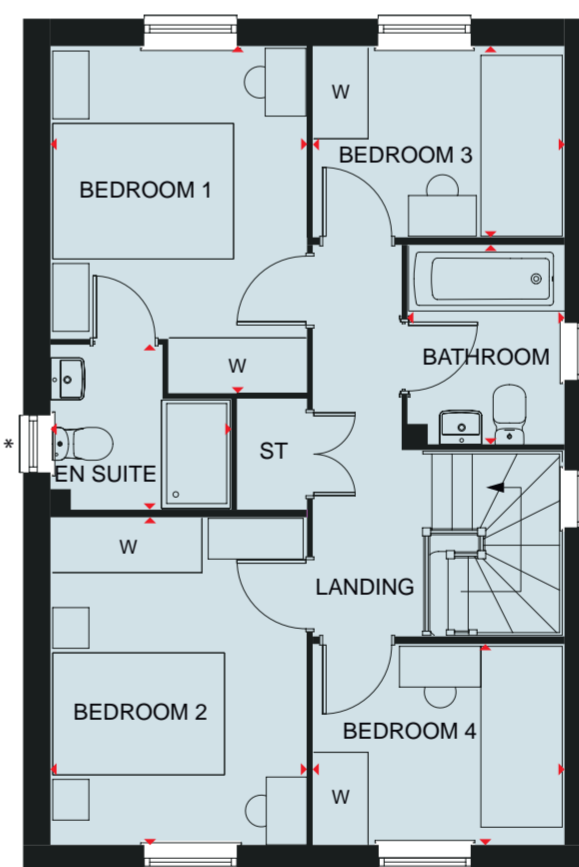
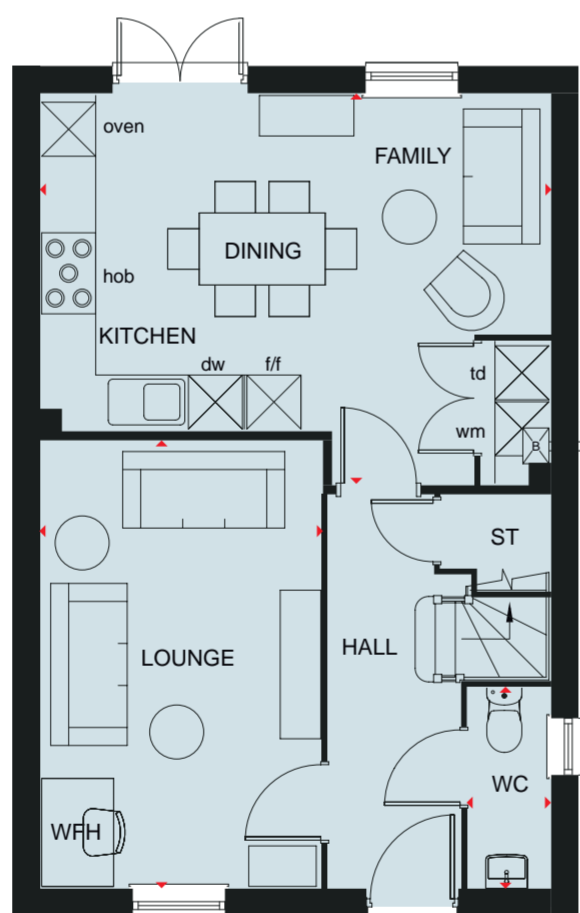
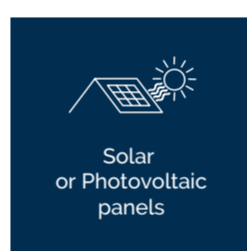
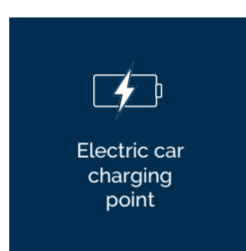
Scan here for more details



DAVID WILSON HOMES

INGLEBY

FOUR BEDROOM HOME



Ground Floor

Lounge	4925 x 3095 mm	16'2" x 10'2"
Kitchen/Family/Dining	5365 x 4295 mm	18'6" x 14'1"
WC	2206 x 900 mm	7'3" x 2'11"

First Floor

Bedroom 1	3797 x 2800 mm	12'6" x 9'2"
En suite	1962 x 1800 mm	6'5" x 5'11"
Bedroom 2	3587 x 2800 mm	11'9" x 9'2"
Bedroom 3	2747 x 2073 mm	9'0" x 6'9"
Bedroom 4	2747 x 2181 mm	9'0" x 7'1"
Bathroom	2179 x 1700 mm	7'2" x 5'7"

Key

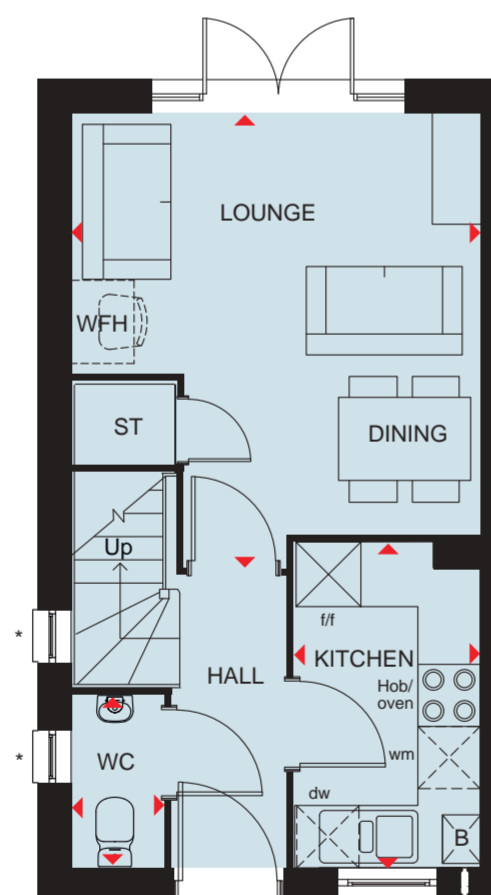
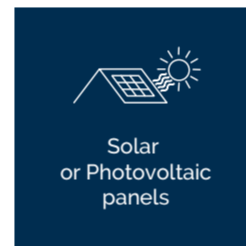
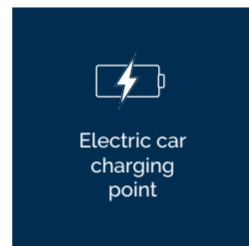
B	Boiler	wm	Washing machine space	f/f	Fridge freezer space	WFH	Working from home space	◀▶	Dimension location
ST	Store	dw	Dishwasher space	td	Tumble dryer space	W	Wardrobe space		



DAVID WILSON HOMES

THE WILFORD

TWO BEDROOM HOME



Ground Floor

Lounge/Dining	4357 x 3923 mm	14'4" x 12'10"
Kitchen	3083 x 1780 mm	10'1" x 5'10"
WC	1615 x 880 mm	5'4" x 2'11"

* Window may be omitted on certain plots.
Speak to a Sales Adviser for details on individual plans.



First Floor

Bedroom 1	3923 x 2487 mm	12'10" x 8'2"
Bedroom 2	3923 x 2926 mm	12'10" x 9'7"
Bathroom	1897 x 1695 mm	6'3" x 5'7"

Key

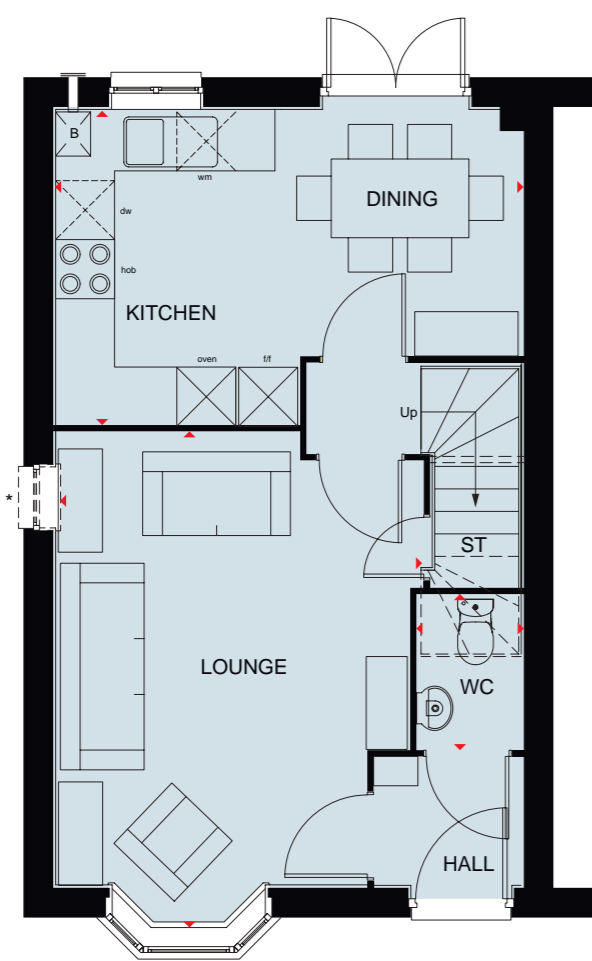
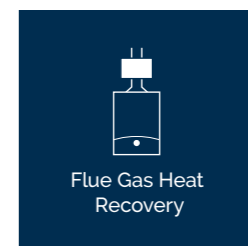
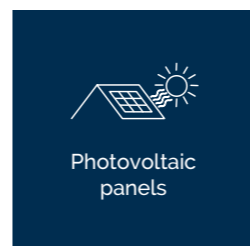
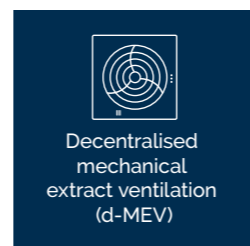
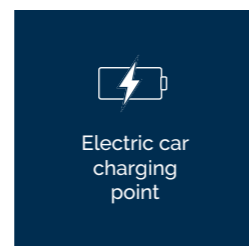
B	Boiler	wm	Washing machine space	f/f	Fridge freezer space	WFH	Working from home space
ST	Store	dw	Dishwasher space	W	Wardrobe space	◀▶	Dimension location



DAVID WILSON HOMES

KENNETT

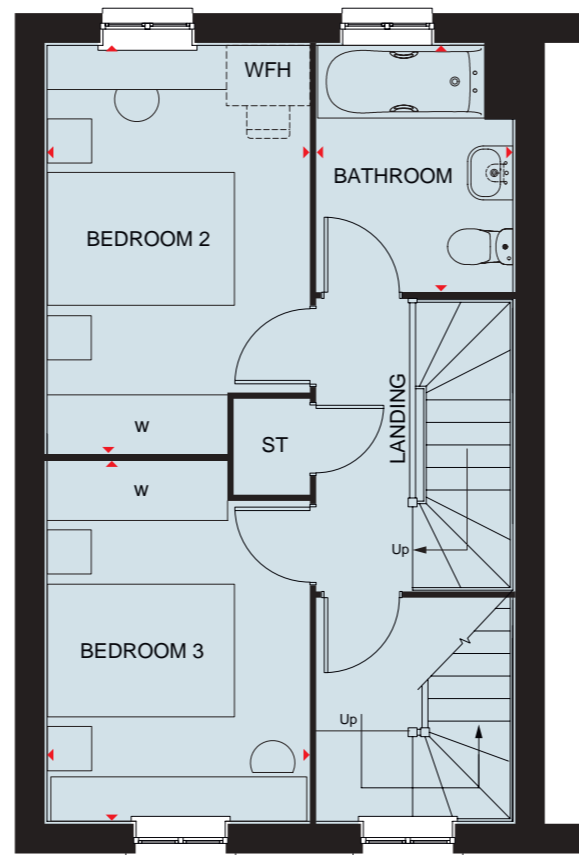
THREE BEDROOM HOME



Ground Floor

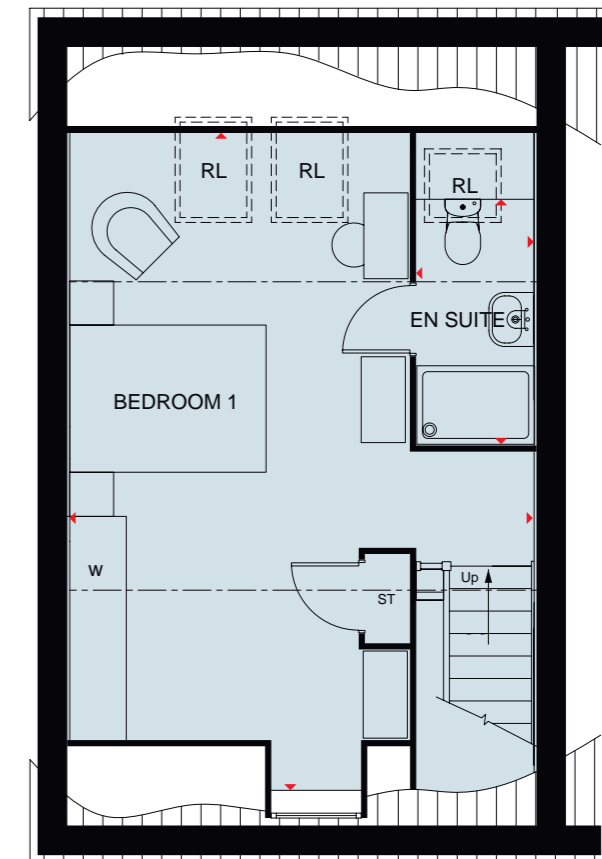
Lounge	4994 x 3727 mm	16'5" x 12'3"
Kitchen/Dining	4726 x 3195mm	15'6" x 10'6"
WC	1562 x 1038 mm	5'1" x 3'5"

* Refer to Sales Adviser



First Floor

Bedroom 2	4141 x 2657 mm	13'7" x 8'9"
Bedroom 3	3656 x 2658 mm	12'0" x 8'9"
Bathroom	2496 x 1986 mm	8'2" x 6'6"



Second Floor

Bedroom 1	6681 x 4731 * mm	21'11" * x 15'6"
En suite	2496 * x 1190 mm	8'2" * x 3'11"

* Overall floor dimension includes lowered ceiling areas

Key

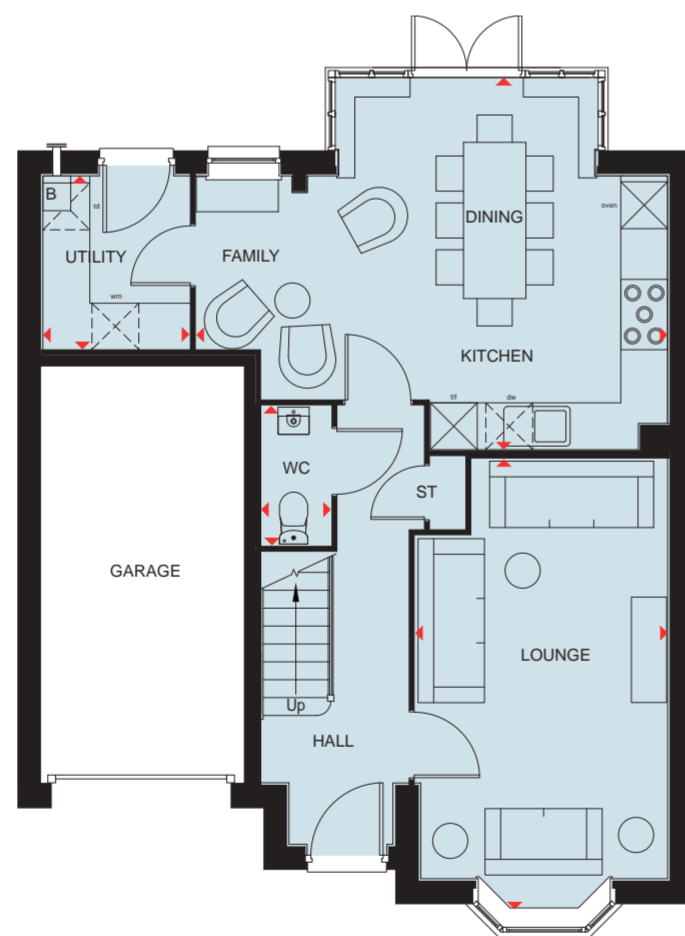
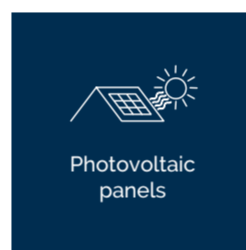
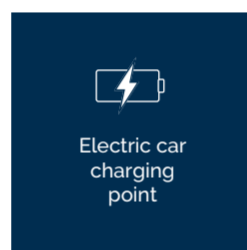
B	Boiler	f/f	Fridge freezer space	wm	Washing machine space	WFH	Working from home space	◀▶	Dimension location
ST	Store	dw	Dishwasher space	w	Wardrobe space	RL	Rooflight		



DAVID WILSON HOMES

MILLFORD

FOUR BEDROOM HOME



Ground Floor

Lounge	5767 x 3235 mm	18'11" x 10'7"
Kitchen/Family/Dining	6037 x 4735 mm	19'10" x 15'6"
Utility	2225 x 1877 mm	7'3" x 6'2"
WC	1786 x 895 mm	5'10" x 2'11"



First Floor

Bedroom 1	5195 x 3818 mm	17'0" x 12'6"
En Suite	2235 x 1924 mm	7'4" x 6'4"
Bedroom 2	4156 x 2707 mm	13'8" x 8'10"
Bedroom 3	4051 x 3365 mm	13'4" x 11'0"
Bedroom 4	3522 x 3124 mm	11'7" x 10'3"
Bathroom	2913 x 1950 mm	9'7" x 6'5"

Key

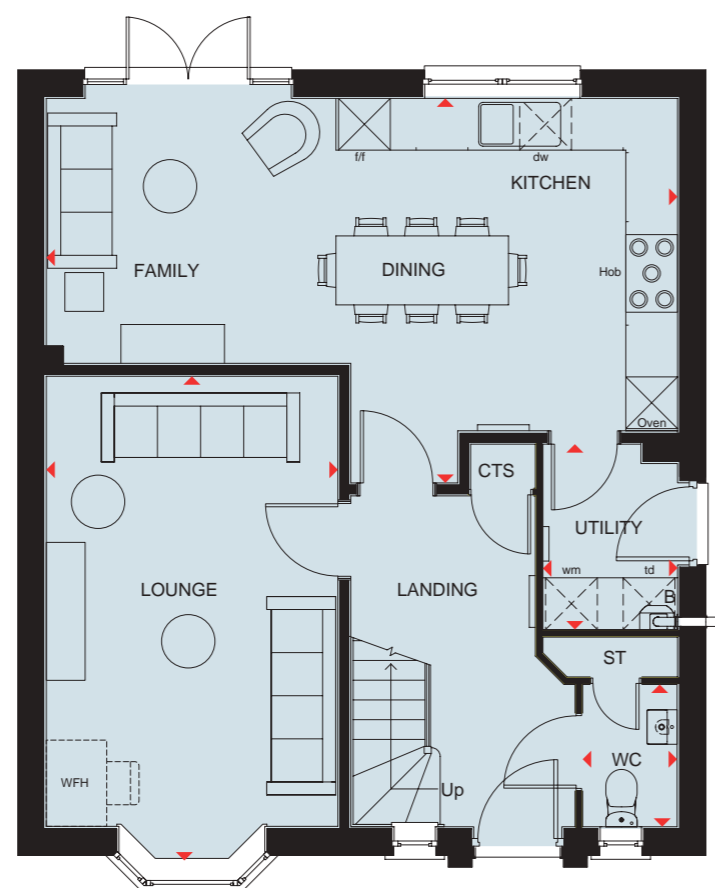
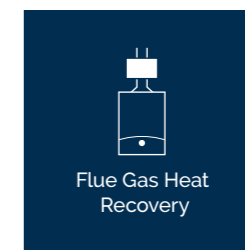
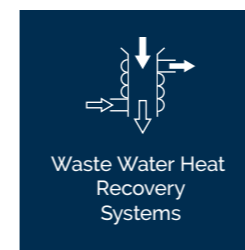
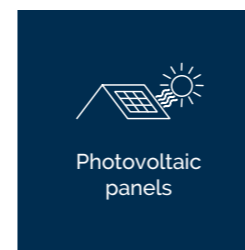
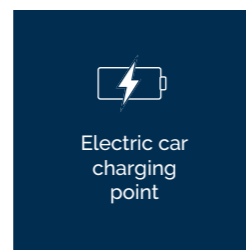
B	Boiler	wm	Washing machine space	f/f	Fridge freezer space	WFH	Working from home space	◀▶	Dimension location
ST	Store	dw	Dishwasher space	td	Tumble dryer space	W	Wardrobe space		



DAVID WILSON HOMES

KIRKDALE

FOUR BEDROOM DETACHED HOME



Ground Floor		
Lounge	3380 x 5617 mm	11'1" x 18'5"
Kitchen/Family/Dining	7318 x 4460 mm	24'0" x 14'8"
Utility	1561 x 2150 mm	5'1" x 7'1"
WC	1095 x 1650 mm	3'7" x 5'5"



First Floor		
Bedroom 1	3885 x 4119 mm	12'9" x 13'6"
En Suite	1425 x 2300 mm	4'8" x 7'7"
Bedroom 2	3350 x 4119 mm	11'0" x 13'6"
Bedroom 3	3447 x 3043 mm	11'4" x 10'0"
Bedroom 4	2725 x 3643 mm	8'11" x 12'0"
Bathroom	1987 x 2010 mm	6'6" x 6'7"

Key

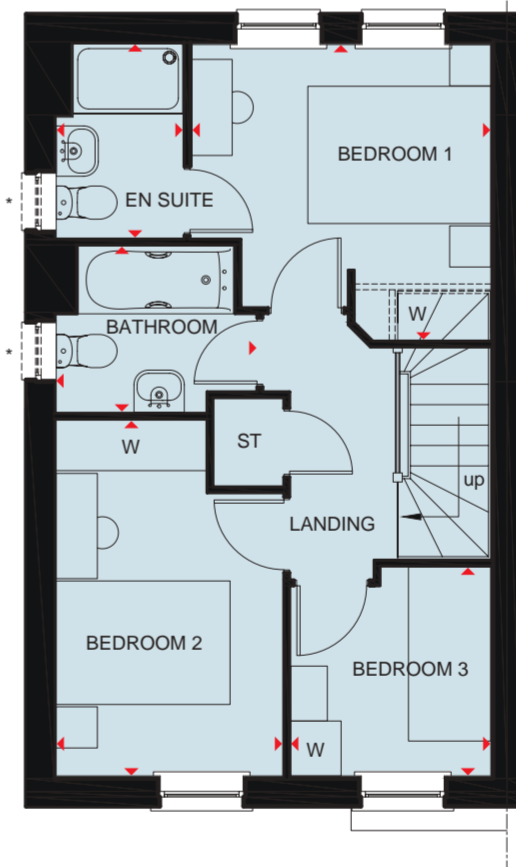
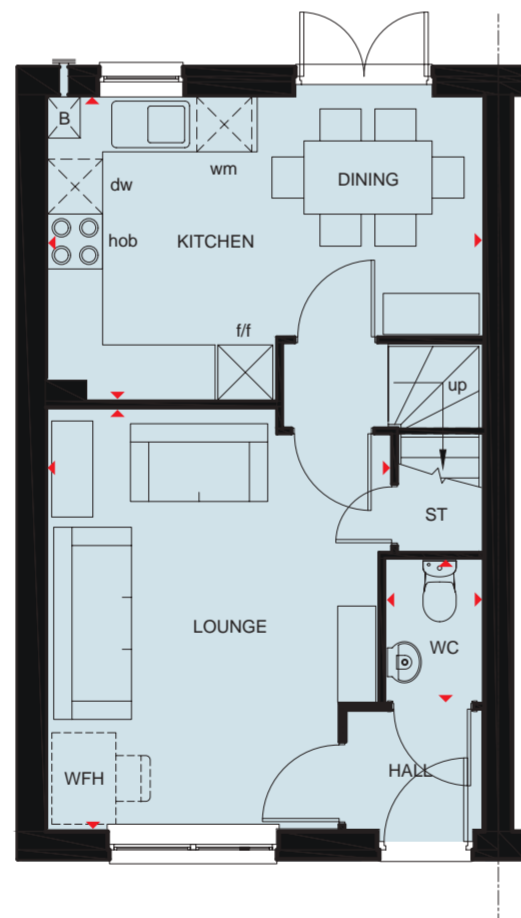
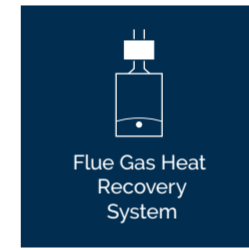
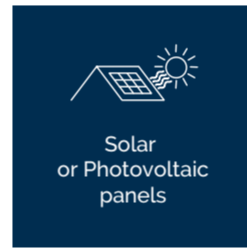
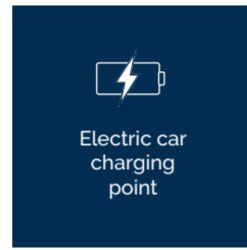
B	Boiler	BH ST	Bulkhead Store	dw	Dishwasher space	td	Tumble dryer space	W	Wardrobe space
ST	Store	wm	Washing machine space	f/f	Fridge freezer space	WFH	Working from home space	◀▶	Dimension location



DAVID WILSON HOMES

THE ARCHFORD

THREE BEDROOM TERRACED HOME



* optional window refer to sales advisor for individual plots

Ground Floor		
Lounge	4599 x 3746 mm	15'1" x 12'3"
Kitchen/Dining	4745 x 3310 mm	15'7" x 10'10"
WC	1561 x 1054 mm	5'1" x 3'5"

First Floor		
Bedroom 1	3277 x 3229 mm	10'9" x 10'7"
En suite	2119 x 1385 mm	6'11" x 4'7"
Bedroom 2	3887 x 2475 mm	12'9" x 8'1"
Bedroom 3	2281 x 2186 mm	7'6" x 7'2"
Bathroom	2181 x 1815 mm	7'2" x 5'11"

Key

B	Boiler	wm	Washing machine space	dw	Dishwasher space	W	Wardrobe space
ST	Store	f/f	Fridge/freezer space	WFH	Working from home space	◀▶	Dimension location



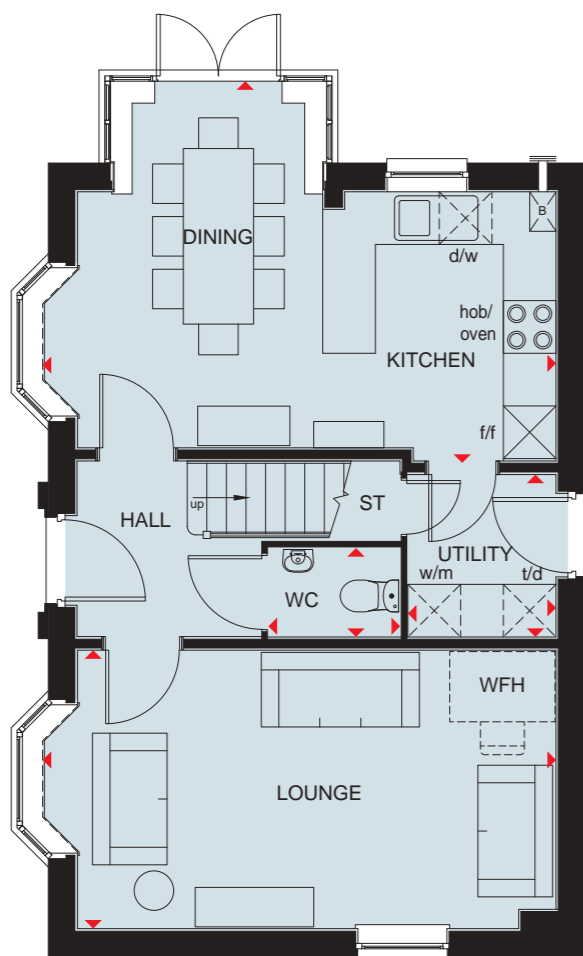
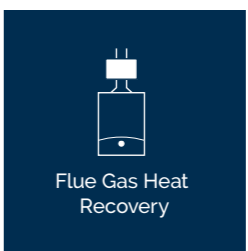
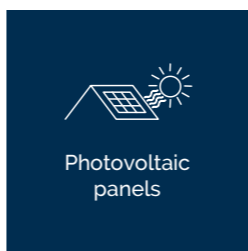
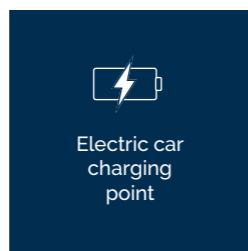
Scan here for more details



DAVID WILSON HOMES

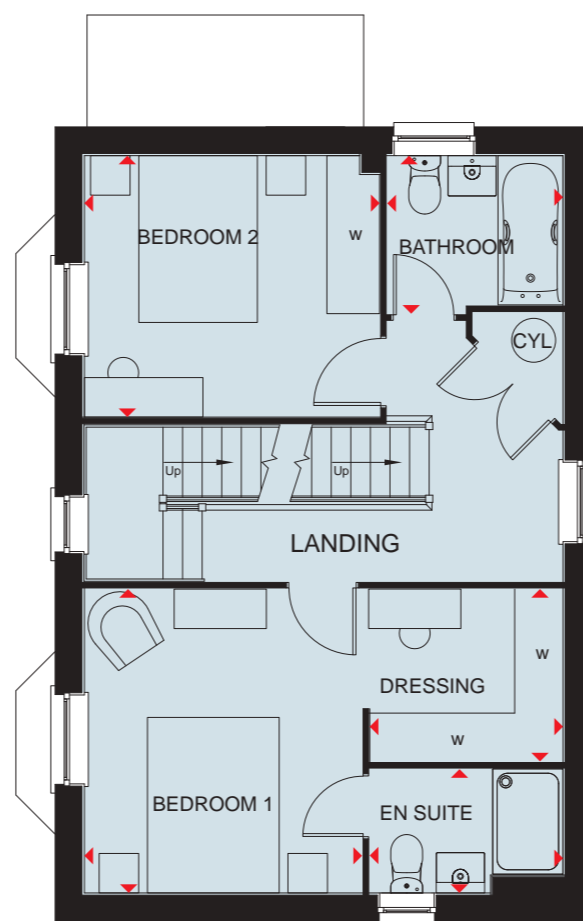
HERTFORD

FOUR BEDROOM HOME



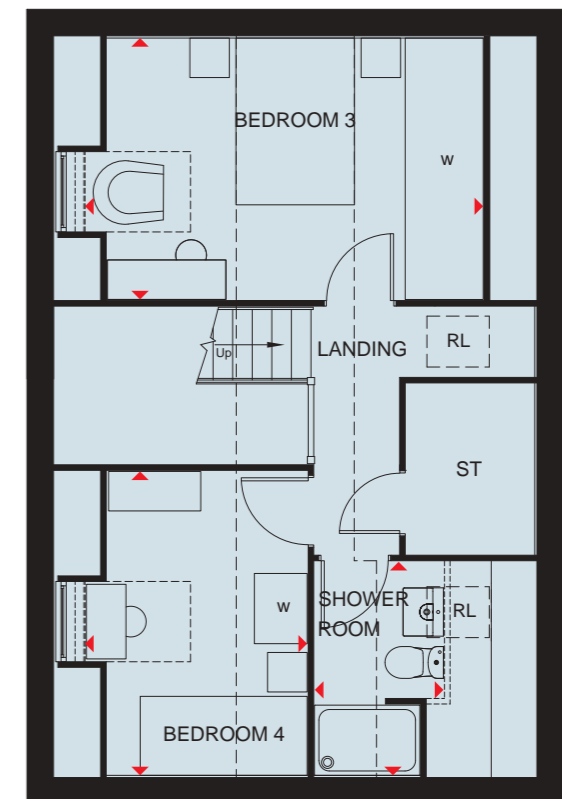
Ground Floor

Lounge	5847 x 3173 mm	19'2" x 10'5"
Kitchen/Dining	5847 x 4177mm	19'2" x 13'8"
Utility	1850 x 1687mm	6'1" x 5'6"
WC	1500 x 1014 mm	4'11" x 3'4"



First Floor

Bedroom 1	3463 x 3162 mm	11'4" x 10'4"
En suite	2201 x 1411 mm	7'3" x 4'8"
Dressing room	2201 x 1964 mm	7'3" x 6'5"
Bedroom 2	3362 x 2979 mm	11'0" x 9'9"
Bathroom	2000 x 1801 mm	6'7" x 5'11"



Second Floor

Bedroom 3	4534* x 2979 mm	14'11"* x 9'9"
Bedroom 4	3463 x 2529* mm	11'4" x 8'4"*
Shower room	2433 x 1464* mm	8'0" x 4'10"*

* Overall floor dimension includes lowered ceiling areas

Key

B	Boiler	CYL	Cylinder	d/w	Dishwasher space	t/d	Tumble dryer space	w	Wardrobe space
ST	Store	f/f	Fridge freezer space	w/m	Washing machine space	WFH	Working from home space	◀▶	Dimension location



DAVID WILSON HOMES