

NEW
AVENUE

OAKWOOD N14

Blackthorn
HOUSE

**1, 2 & 3 BEDROOM
APARTMENTS**

HOMES 167, 168, 169, 170, 171, 172,
173, 174, 175, 176, 177, 178, 179, 180,
181, 182, 183, 184, 185, 186, 187, 188,
189, 190, 191, 192, 193, 194, 195, 196,
197, 198, 199, 200, 201 & 202

N

NEW AVENUE



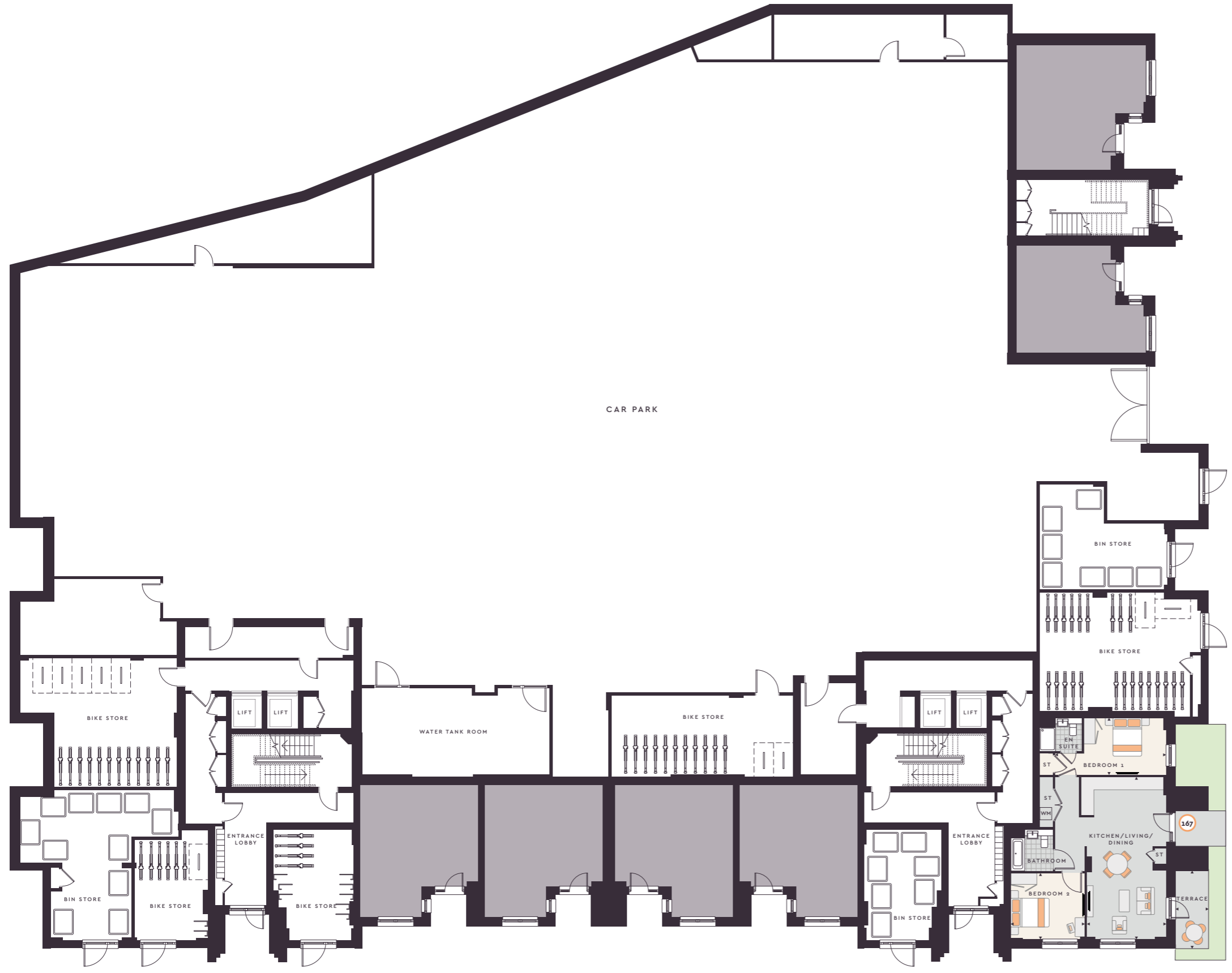
N

NEW AVENUE



Blackthorn HOUSE

Marketing SUITE



HOME 167
2 BEDROOM APARTMENT
Kitchen/Living/Dining
 8.25m x 4.04m | 27'1" x 13'3"
Bedroom 1
 5.64m x 2.89m | 18'6" x 9'6"
Bedroom 2
 3.75m x 3.37m | 12'4" x 11'1"
Terrace
 3.94m x 1.67m | 12'11" x 5'6"
Total Area
 80.01 sq. m. | 861.22 sq. ft.



Key:
 ST – Storage WM – Washing Machine
 ● 2 Bedroom

Layouts provide approximate measurements only. Dimensions, which are taken from the indicated points of measurement, are for guidance only and are not intended to be used for carpet sizes, appliance space or items of furniture. Apartment areas are provided as gross internal areas and may vary. Bathroom and kitchen layouts are indicative only and are subject to change. Apartment layout sizes may vary slightly from one another depending on the floor level – please refer to the price list or the Sales Team for more details. The information contained within this document does not constitute part of any offer, contract or warranty. Whilst the plans have been prepared with all due care for the convenience of the intending purchaser, the information contained herein is a preliminary guide only.

HOME 168
2 BEDROOM APARTMENT

Kitchen/Living/Dining	7.89m x 3.61m		25'11" x 11'10"
Bedroom 1	5.05m x 3.25m		16'7" x 10'8"
Bedroom 2	3.59m x 3.84m		12'7" x 11'9"
Terrace	3.20m x 1.93m		10'6" x 6'4"
Total Area	78.91 sq. m.		849.38 sq. ft.

HOME 169
2 BEDROOM APARTMENT

Kitchen/Living/Dining	8.13m x 3.39m		26'8" x 11'1"
Bedroom 1	5.88m x 2.77m		19'4" x 9'1"
Bedroom 2	3.84m x 3.02m		12'7" x 9'11"
Balcony	3.20m x 2.24m		10'6" x 7'4"
Total Area	75.60 sq. m.		813.75 sq. ft.

HOME 170
2 BEDROOM APARTMENT

Kitchen/Living/Dining	8.13m x 3.39m		26'8" x 11'1"
Bedroom 1	5.88m x 2.77m		19'4" x 9'1"
Bedroom 2	3.84m x 3.02m		12'7" x 9'11"
Balcony	3.20m x 2.24m		10'6" x 7'4"
Total Area	75.60 sq. m.		813.75 sq. ft.

HOME 171
2 BEDROOM APARTMENT

Kitchen/Living/Dining	7.38m x 3.32m		24'2" x 10'11"
Bedroom 1	5.63m x 3.35m		18'6" x 11'0"
Bedroom 2	4.21m x 2.75m		13'10" x 9'0"
Terrace	5.95m x 2.16m		19'6" x 7'1"
Total Area	75.82 sq. m.		816.11 sq. ft.

HOME 172
1 BEDROOM APARTMENT

Kitchen/Living/Dining	6.71m x 4.06m		22'0" x 13'4"
Bedroom	3.80m x 3.35m		13'6" x 11'0"
Terrace	6.83m x 2.16m		22'5" x 7'1"
Total Area	50.25 sq. m.		540.88 sq. ft.



Key:
ST – Storage WM – Washing Machine
○ 1 Bedroom ● 2 Bedroom

Layouts provide approximate measurements only. Dimensions, which are taken from the indicated points of measurement, are for guidance only and are not intended to be used for carpet sizes, appliance space or items of furniture. Apartment areas are provided as gross internal areas and may vary. Bathroom and kitchen layouts are indicative only and are subject to change. Apartment layout sizes may vary slightly from one another depending on the floor level – please refer to the price list or the Sales Team for more details. The information contained within this document does not constitute part of any offer, contract or warranty. Whilst the plans have been prepared with all due care for the convenience of the intending purchaser, the information contained herein is a preliminary guide only.

HOME 173
2 BEDROOM APARTMENT

Kitchen/Living/Dining
8.99m x 4.56m | 29'6" x 15'0"
Bedroom 1
5.44m x 3.13m | 17'10" x 10'3"
Bedroom 2
4.34m x 2.75m | 14'3" x 9'0"
Balcony
5.57m x 1.54m | 18'3" x 5'1"
Total Area
73.87 sq. m. | 795.13 sq. ft.

HOME 174
1 BEDROOM APARTMENT

Kitchen/Living/Dining
7.98m x 3.13m | 26'2" x 10'3"
Bedroom
6.18m x 2.75m | 20'3" x 9'0"
Balcony
4.87m x 1.54m | 16'0" x 5'0"
Total Area
54.06 sq. m. | 581.89 sq. ft.

HOME 175
2 BEDROOM APARTMENT

Kitchen/Living/Dining
7.89m x 3.61m | 25'10" x 11'10"
Bedroom 1
5.05m x 3.25m | 16'7" x 10'8"
Bedroom 2
3.59m x 3.84m | 12'7" x 11'9"
Terrace
3.16m x 2.22m | 10'4" x 7'4"
Total Area
78.91 sq. m. | 849.38 sq. ft.

HOME 176
2 BEDROOM APARTMENT

Kitchen/Living/Dining
8.13m x 3.39m | 26'8" x 11'1"
Bedroom 1
5.88m x 2.77m | 19'4" x 9'1"
Bedroom 2
3.84m x 3.02m | 12'7" x 9'11"
Balcony
3.20m x 2.24m | 10'6" x 7'4"
Total Area
75.60 sq. m. | 813.75 sq. ft.

HOME 177
2 BEDROOM APARTMENT

Kitchen/Living/Dining
8.13m x 3.39m | 26'8" x 11'1"
Bedroom 1
5.88m x 2.77m | 19'4" x 9'1"
Bedroom 2
3.84m x 3.02m | 12'7" x 9'11"
Balcony
3.20m x 2.24m | 10'6" x 7'4"
Total Area
75.60 sq. m. | 813.75 sq. ft.

HOME 178
2 BEDROOM APARTMENT

Kitchen/Living/Dining
7.38m x 3.32m | 24'3" x 10'11"
Bedroom 1
5.63m x 3.35m | 18'6" x 11'0"
Bedroom 2
4.21m x 2.75m | 13'10" x 9'0"
Balcony
5.52m x 1.51m | 18'1" x 4'11"
Total Area
75.82 sq. m. | 816.11 sq. ft.

HOME 179
1 BEDROOM APARTMENT

Kitchen/Living/Dining
6.71m x 4.06m | 22'0" x 13'4"
Bedroom
4.46m x 3.35m | 14'7" x 11'0"
Balcony
3.47m x 1.54m | 11'5" x 5'0"
Total Area
50.25 sq. m. | 540.88 sq. ft.



Key:
ST – Storage WM – Washing Machine
○ 1 Bedroom ● 2 Bedroom

Layouts provide approximate measurements only. Dimensions, which are taken from the indicated points of measurement, are for guidance only and are not intended to be used for carpet sizes, appliance space or items of furniture. Apartment areas are provided as gross internal areas and may vary. Bathroom and kitchen layouts are indicative only and are subject to change. Apartment layout sizes may vary slightly from one another depending on the floor level – please refer to the price list or the Sales Team for more details. The information contained within this document does not constitute part of any offer, contract or warranty. Whilst the plans have been prepared with all due care for the convenience of the intending purchaser, the information contained herein is a preliminary guide only.

HOME 180
2 BEDROOM APARTMENT

Kitchen/Living/Dining	8.99m x 4.56m		29'6" x 15'0"
Bedroom 1	5.44m x 3.13m		17'10" x 10'3"
Bedroom 2	4.34m x 2.75m		14'3" x 9'0"
Balcony	5.57m x 1.54m		18'3" x 5'0"
Total Area	73.87 sq. m.		795.13 sq. ft.

HOME 181
1 BEDROOM APARTMENT

Kitchen/Living/Dining	7.98m x 3.13m		26'2" x 10'3"
Bedroom	6.18m x 2.75m		20'3" x 9'0"
Balcony	4.87m x 1.54m		16'0" x 5'0"
Total Area	54.06 sq. m.		581.89 sq. ft.

HOME 182
2 BEDROOM APARTMENT

Kitchen/Living/Dining	7.89m x 3.61m		25'10" x 11'10"
Bedroom 1	5.05m x 3.25m		16'7" x 10'8"
Bedroom 2	3.59m x 3.84m		12'7" x 11'9"
Terrace	3.16m x 2.22m		10'4" x 7'4"
Total Area	78.91 sq. m.		849.38 sq. ft.

HOME 183
2 BEDROOM APARTMENT

Kitchen/Living/Dining	8.13m x 3.39m		26'8" x 11'1"
Bedroom 1	5.88m x 2.77m		19'4" x 9'1"
Bedroom 2	3.84m x 3.02m		12'7" x 9'11"
Balcony	3.20m x 2.24m		10'6" x 7'4"
Total Area	75.60 sq. m.		813.75 sq. ft.

HOME 184
2 BEDROOM APARTMENT

Kitchen/Living/Dining	8.13m x 3.39m		26'8" x 11'1"
Bedroom 1	5.88m x 2.77m		19'4" x 9'1"
Bedroom 2	3.84m x 3.02m		12'7" x 9'11"
Balcony	3.20m x 2.24m		10'6" x 7'4"
Total Area	75.60 sq. m.		813.75 sq. ft.

HOME 185
2 BEDROOM APARTMENT

Kitchen/Living/Dining	7.38m x 3.32m		24'3" x 10'11"
Bedroom 1	5.63m x 3.35m		18'6" x 11'0"
Bedroom 2	4.21m x 2.75m		13'10" x 9'0"
Balcony	5.52m x 1.51m		18'1" x 4'11"
Total Area	75.82 sq. m.		816.11 sq. ft.

HOME 186
1 BEDROOM APARTMENT

Kitchen/Living/Dining	6.71m x 4.06m		22'0" x 13'4"
Bedroom	4.46m x 3.35m		14'7" x 11'0"
Balcony	3.47m x 1.54m		11'5" x 5'0"
Total Area	50.25 sq. m.		540.88 sq. ft.



Key:
ST – Storage WM – Washing Machine
○ 1 Bedroom ● 2 Bedroom

Layouts provide approximate measurements only. Dimensions, which are taken from the indicated points of measurement, are for guidance only and are not intended to be used for carpet sizes, appliance space or items of furniture. Apartment areas are provided as gross internal areas and may vary. Bathroom and kitchen layouts are indicative only and are subject to change. Apartment layout sizes may vary slightly from one another depending on the floor level – please refer to the price list or the Sales Team for more details. The information contained within this document does not constitute part of any offer, contract or warranty. Whilst the plans have been prepared with all due care for the convenience of the intending purchaser, the information contained herein is a preliminary guide only.

HOME 187
3 BEDROOM APARTMENT

Kitchen/Living/Dining	8.89m x 5.72m		29'2" x 18'9"
Bedroom 1	3.90m x 3.35m		12'10" x 11'0"
Bedroom 2	3.74m x 3.27m		12'3" x 10'9"
Bedroom 3	3.74m x 3.11m		12'3" x 10'2"
Balcony	3.47m x 1.54m		11'5" x 5'0"
Roof Terrace	12.45m x 1.83m		40'10" x 6'0"
Total Area	104.49 sq. m.		1,124.72 sq. ft.

HOME 188
2 BEDROOM APARTMENT

Kitchen/Living/Dining	7.89m x 3.61m		25'10" x 11'10"
Bedroom 1	5.05m x 3.25m		16'7" x 10'8"
Bedroom 2	3.59m x 3.84m		12'7" x 11'9"
Terrace	3.16m x 2.22m		10'4" x 7'4"
Total Area	78.91 sq. m.		849.38 sq. ft.

HOME 189
2 BEDROOM APARTMENT

Kitchen/Living/Dining	8.13m x 3.39m		26'8" x 11'1"
Bedroom 1	5.88m x 2.77m		19'4" x 9'1"
Bedroom 2	3.84m x 3.02m		12'7" x 9'11"
Balcony	3.20m x 2.24m		10'6" x 7'4"
Total Area	75.60 sq. m.		813.75 sq. ft.

HOME 190
2 BEDROOM APARTMENT

Kitchen/Living/Dining	8.13m x 3.39m		26'8" x 11'1"
Bedroom 1	5.88m x 2.77m		19'4" x 9'1"
Bedroom 2	3.84m x 3.02m		12'7" x 9'11"
Balcony	3.20m x 2.24m		10'6" x 7'4"
Total Area	75.60 sq. m.		813.75 sq. ft.

HOME 191
2 BEDROOM APARTMENT

Kitchen/Living/Dining	7.38m x 3.32m		24'3" x 10'11"
Bedroom 1	5.63m x 3.35m		18'6" x 11'0"
Bedroom 2	4.21m x 2.75m		13'10" x 9'0"
Balcony	5.52m x 1.51m		18'1" x 4'11"
Total Area	75.82 sq. m.		816.11 sq. ft.

HOME 192
1 BEDROOM APARTMENT

Kitchen/Living/Dining	6.71m x 4.06m		22'0" x 13'4"
Bedroom	4.46m x 3.35m		14'7" x 11'0"
Balcony	3.47m x 1.54m		11'5" x 5'0"
Total Area	50.25 sq. m.		540.88 sq. ft.



Key:
ST – Storage WM – Washing Machine
○ 1 Bedroom ● 2 Bedroom ● 3 Bedroom

Layouts provide approximate measurements only. Dimensions, which are taken from the indicated points of measurement, are for guidance only and are not intended to be used for carpet sizes, appliance space or items of furniture. Apartment areas are provided as gross internal areas and may vary. Bathroom and kitchen layouts are indicative only and are subject to change. Apartment layout sizes may vary slightly from one another depending on the floor level – please refer to the price list or the Sales Team for more details. The information contained within this document does not constitute part of any offer, contract or warranty. Whilst the plans have been prepared with all due care for the convenience of the intending purchaser, the information contained herein is a preliminary guide only.

HOME 193
2 BEDROOM APARTMENT

Kitchen/Living/Dining	7.89m x 3.61m		25'10" x 11'10"
Bedroom 1	5.05m x 3.25m		16'7" x 10'8"
Bedroom 2	3.59m x 3.84m		12'7" x 11'9"
Terrace	3.16m x 2.22m		10'4" x 7'4"
Total Area	78.91 sq. m.		849.38 sq. ft.

HOME 194
2 BEDROOM APARTMENT

Kitchen/Living/Dining	8.13m x 3.39m		26'8" x 11'1"
Bedroom 1	5.88m x 2.77m		19'4" x 9'1"
Bedroom 2	3.84m x 3.02m		12'7" x 9'11"
Balcony	3.20m x 2.24m		10'6" x 7'4"
Total Area	75.60 sq. m.		813.75 sq. ft.

HOME 195
2 BEDROOM APARTMENT

Kitchen/Living/Dining	8.13m x 3.39m		26'8" x 11'1"
Bedroom 1	5.88m x 2.77m		19'4" x 9'1"
Bedroom 2	3.84m x 3.02m		12'7" x 9'11"
Balcony	3.20m x 2.24m		10'6" x 7'4"
Total Area	75.60 sq. m.		813.75 sq. ft.

HOME 196
2 BEDROOM APARTMENT

Kitchen/Living/Dining	7.38m x 3.32m		24'2" x 10'11"
Bedroom 1	5.63m x 3.35m		18'6" x 11'0"
Bedroom 2	4.21m x 2.75m		13'10" x 9'0"
Balcony	5.52m x 1.51m		18'1" x 4'11"
Total Area	75.82 sq. m.		816.11 sq. ft.

HOME 197
1 BEDROOM APARTMENT

Kitchen/Living/Dining	6.71m x 4.06m		22'0" x 13'4"
Bedroom	4.46m x 3.35m		14'7" x 11'0"
Balcony	3.47m x 1.54m		11'5" x 5'0"
Total Area	50.25 sq. m.		540.88 sq. ft.



Key:
ST – Storage WM – Washing Machine
○ 1 Bedroom ● 2 Bedroom

Layouts provide approximate measurements only. Dimensions, which are taken from the indicated points of measurement, are for guidance only and are not intended to be used for carpet sizes, appliance space or items of furniture. Apartment areas are provided as gross internal areas and may vary. Bathroom and kitchen layouts are indicative only and are subject to change. Apartment layout sizes may vary slightly from one another depending on the floor level – please refer to the price list or the Sales Team for more details. The information contained within this document does not constitute part of any offer, contract or warranty. Whilst the plans have been prepared with all due care for the convenience of the intending purchaser, the information contained herein is a preliminary guide only.

HOME 198
2 BEDROOM APARTMENT

Kitchen/Living/Dining	7.89m x 3.61m		25'10" x 11'10"
Bedroom 1	5.05m x 3.25m		16'7" x 10'8"
Bedroom 2	3.59m x 3.84m		12'7" x 11'9"
Terrace	3.16m x 2.22m		10'4" x 7'4"
Total Area	78.91 sq. m.		849.38 sq. ft.

HOME 199
2 BEDROOM APARTMENT

Kitchen/Living/Dining	8.13m x 3.39m		26'8" x 11'1"
Bedroom 1	5.88m x 2.77m		19'4" x 9'1"
Bedroom 2	3.84m x 3.02m		12'7" x 9'11"
Balcony	3.20m x 2.24m		10'6" x 7'4"
Total Area	75.60 sq. m.		813.75 sq. ft.

HOME 200
2 BEDROOM APARTMENT

Kitchen/Living/Dining	8.13m x 3.39m		26'8" x 11'1"
Bedroom 1	5.88m x 2.77m		19'4" x 9'1"
Bedroom 2	3.84m x 3.02m		12'7" x 9'11"
Balcony	3.20m x 2.24m		10'6" x 7'4"
Total Area	75.60 sq. m.		813.75 sq. ft.

HOME 201
2 BEDROOM APARTMENT

Kitchen/Living/Dining	7.38m x 3.32m		24'2" x 10'11"
Bedroom 1	5.63m x 3.35m		18'6" x 11'0"
Bedroom 2	4.21m x 2.75m		13'10" x 9'0"
Balcony	5.52m x 1.51m		18'1" x 4'11"
Total Area	75.82 sq. m.		816.11 sq. ft.

HOME 202
1 BEDROOM APARTMENT

Kitchen/Living/Dining	6.71m x 4.06m		22'0" x 13'4"
Bedroom	4.46m x 3.35m		14'7" x 11'0"
Balcony	3.47m x 1.54m		11'5" x 5'0"
Total Area	50.25 sq. m.		540.88 sq. ft.



Key:
ST – Storage WM – Washing Machine
○ 1 Bedroom ● 2 Bedroom

Layouts provide approximate measurements only. Dimensions, which are taken from the indicated points of measurement, are for guidance only and are not intended to be used for carpet sizes, appliance space or items of furniture. Apartment areas are provided as gross internal areas and may vary. Bathroom and kitchen layouts are indicative only and are subject to change. Apartment layout sizes may vary slightly from one another depending on the floor level – please refer to the price list or the Sales Team for more details. The information contained within this document does not constitute part of any offer, contract or warranty. Whilst the plans have been prepared with all due care for the convenience of the intending purchaser, the information contained herein is a preliminary guide only.

NEW AVENUE

OAKWOOD N14



020 4571 9522

www.newavenue-oakwood.co.uk

Avenue Road, Oakwood, London N14 4DG



COUNTRYSIDE

Places People Love