



BARRATT
— HOMES —

Saxon View

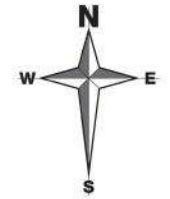
Queen Elizabeth Road, Nuneaton, CV10 9BS

SAXON VIEW

DEVELOPMENT LAYOUT

KEY

- ALVERTON 2 bedroom home
- RICHMOND 2 bedroom home
- ALVECOTE 3 bedroom home
- BRENTFORD 3 bedroom home
- SUFFOLK 3 bedroom home
- SUTTON 3 bedroom home
- BUCHANAN 3 bedroom home
- MORESBY 3 bedroom home
- ARBURY 3 bedroom home
- ENNERDALE 3 bedroom home
- MAIDSTONE 3 bedroom home
- NORBURY 3 bedroom home
- KINGSVILLE 4 bedroom home
- LAND OWNED BY LOCAL AUTHORITY
- RETAINING WALL OVER 1.2M
- RETAINING WALL UNDER 1.2M



- For Sale
- Reserved
- Exchanged
- Completed

barrathomes.co.uk



Development layouts and landscaping are not intended to form part of any contract or warranty unless specifically incorporated in writing into the contract. Images and development layouts are for illustrative purposes and should be used for general guidance only. Development layouts including parking arrangements, may change to reflect changes in planning permission and are not intended to form part of any contract or warranty unless specifically incorporated in writing. Please speak to your solicitor to whom full details of any planning consents including layout plans will be available. Saxon View is a marketing name only and may not be the designated postal address, which may be determined by The Post Office.

BDW001661/AUG22

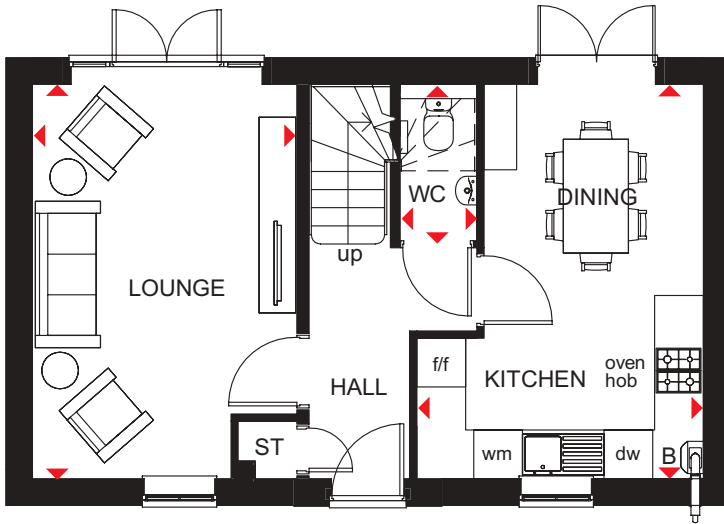
BUCHANAN

3 BEDROOM DETACHED HOME



- A three bedroom home offering open-plan kitchen and dining area with French doors opening onto the rear garden
- Well-proportioned lounge with French doors leading to the garden
- First floor features two double bedrooms with en suite to main bedroom, single bedroom and family bathroom

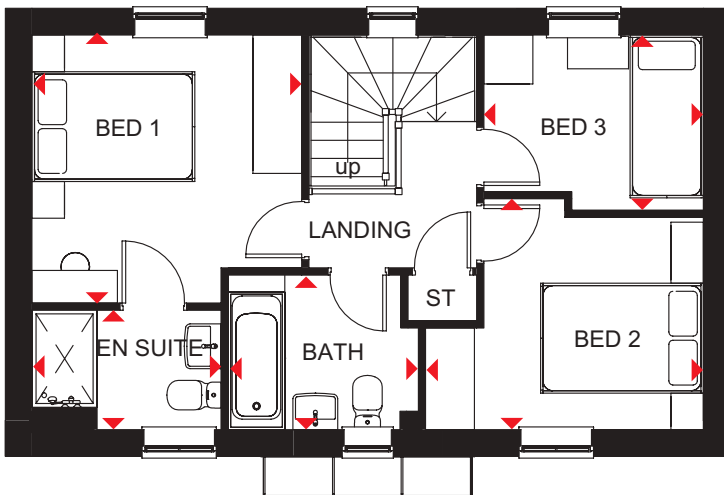




Ground Floor

| | | |
|----------------|---------------|----------------|
| Lounge | 4848 x 3250mm | 15'11" x 10'8" |
| Kitchen/Dining | 3521 x 4848mm | 11'7" x 15'11" |
| WC | 1921 x 943mm | 6'4" x 3'1" |

(Approximate dimensions)



First Floor

| | | |
|-----------|---------------|-----------------|
| Bedroom 1 | 3312 x 3292mm | 10'10" x 10'10" |
| En Suite | 2322 x 1468mm | 7'7" x 4'10" |
| Bedroom 2 | 3413 x 2836mm | 11'2" x 9'4" |
| Bedroom 3 | 2696 x 2150mm | 8'10" x 7'1" |
| Bathroom | 2335 x 1900mm | 7'8" x 6'3" |

(Approximate dimensions)

| | | | | |
|------------|----|-----------------------|-----|----------------------|
| KEY | B | Boiler | f/f | Fridge/freezer space |
| | ST | Store | dw | Dishwasher space |
| | wm | Washing machine space | ◀▶ | Dimension location |

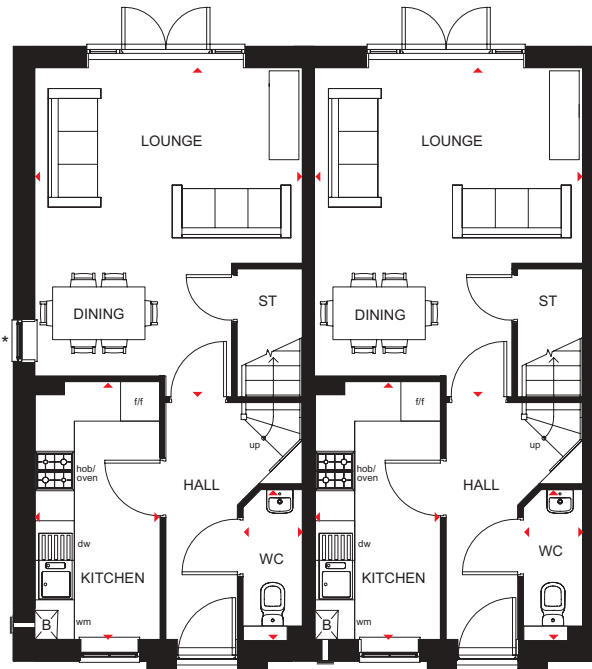
NORBURY

3 BEDROOM TERRACED HOME



- Spacious 2½ storey, three bedroom home featuring open-plan lounge and dining room with French doors opening onto the rear garden
- Stylish kitchen comes with quality units and appliances in a range of finishes
- First floor has two double bedrooms and dual-access family bathroom
- The impressive main bedroom is located on the second floor and features dressing area and en suite shower room



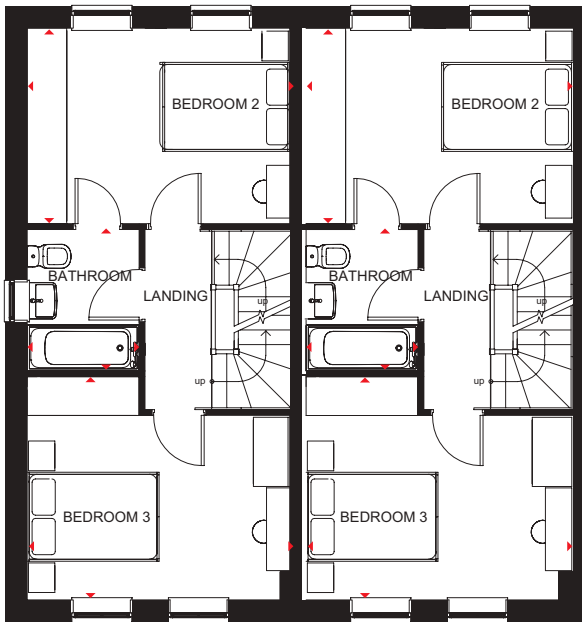


Ground Floor

| | | |
|---------------|---------------|---------------|
| Lounge/Dining | 4056 x 4991mm | 13'4" x 16'4" |
| Kitchen | 3910 x 1900mm | 12'10" x 6'3" |
| WC | 897 x 2272mm | 2'11" x 7'5" |

(Approximate dimensions)

* Window may be omitted on certain plots. Speak to a Sales Adviser for details on individual plots.



First Floor

| | | |
|-----------|---------------|---------------|
| Bedroom 2 | 2965 x 4056mm | 9'9" x 13'4" |
| Bedroom 3 | 3386 x 4056mm | 11'1" x 13'4" |
| Bathroom | 2146 x 1698mm | 7'0" x 5'7" |

(Approximate dimensions)

* Window may be omitted on certain plots. Speak to a Sales Adviser for details on individual plots.



Second Floor

| | | |
|-----------------------------|----------------|---------------|
| Bedroom 1/ Dressing Area | 4056 x 8673mm* | 13'4" x 28'5" |
| En Suite | 1858 x 2799mm* | 6'1" x 9'2" |

(Approximate dimensions)

*Overall floor dimension includes lower ceiling areas.

| | | | | |
|------------|----|-----------------------|-----|----------------------|
| KEY | B | Boiler | f/f | Fridge/freezer space |
| | ST | Store | dw | Dishwasher space |
| | wm | Washing machine space | ◀▶ | Dimension location |

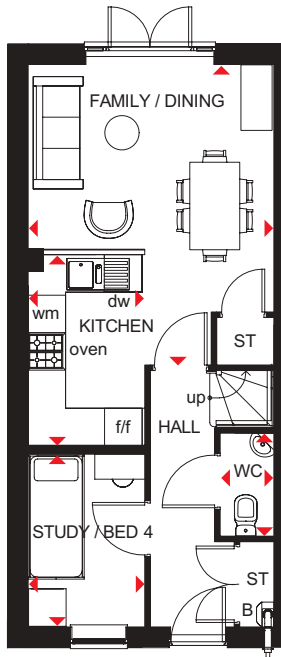
KINGSVILLE

4 BEDROOM TERRACED HOME



- An ideal family home designed over three floors
- A generous open-plan kitchen with dining and family areas, and a fourth bedroom/study are on the ground floor
- On the first floor oversized windows fill the lounge and main bedroom with light, giving them a bright and airy feeling, and the bedroom has an en suite
- The second floor offers a further double bedroom, a single bedroom and a family bathroom

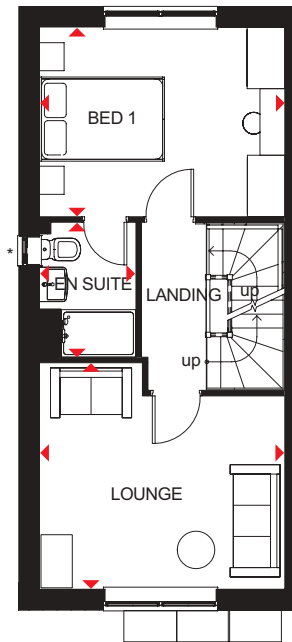




Ground Floor

| | | |
|---------------|---------------|-----------------|
| Family/Dining | 3936 x 4820mm | 12'11" x 15'10" |
| Kitchen | 1866 x 3060mm | 6'1" x 10'0" |
| Study/Bed 4 | 1866 x 2749mm | 6'1" x 9'0" |
| WC | 861 x 1649mm | 2'10" x 5'5" |

(Approximate dimensions)

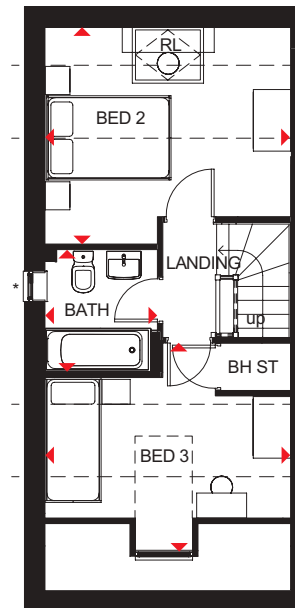


First Floor

| | | |
|-----------|---------------|-----------------|
| Lounge | 3936 x 3630mm | 12'11" x 11'11" |
| Bedroom 1 | 3936 x 3042mm | 12'11" x 10'0" |
| En Suite | 1551 x 2163mm | 5'1" x 7'1" |

(Approximate dimensions)

* Window may be omitted on certain plots. Speak to a Sales Adviser for details on individual plots.



Second Floor

| | | |
|-----------|---------------|-----------------|
| Bedroom 2 | 3936 x 3508mm | 12'11" x 11'6" |
| Bedroom 3 | 3936 x 3325mm | 12'11" x 10'11" |
| Bathroom | 1761 x 1963mm | 5'9" x 6'5" |

(Approximate dimensions)

* Window may be omitted on certain plots. Speak to a Sales Adviser for details on individual plots.

* Overall floor dimension includes lower ceiling areas.

| | | | | | | |
|------------|-------|----------------|-----|-----------------------|----|--------------------|
| KEY | B | Boiler | wm | Washing machine space | RL | Roof light |
| | ST | Store | f/f | Fridge/freezer space | ◀▶ | Dimension location |
| | BH ST | Bulkhead Store | dw | Dishwasher space | | |



BARRATT
— HOMES —

Saxon View

Queen Elizabeth Road, Nuneaton, CV10 9BS

Call **033 3355 8478**
to book an appointment