

# ALEXANDER WHARF

LONDON  
DOCK  
E1

# LONDON DOCK E1

**London Dock is redefining contemporary city living at the heart of the capital.**

London's leading developer, St George, is transforming this historic location, moments from Tower Bridge, the Tower of London, St Katharine Docks and the City.

Celebrating a rich past whilst creating a new destination, London Dock is set to unlock an exciting new future in E1.

# LONDON DOCK E1







Computer-generated images are indicative only



“Alexander Wharf reflects London Dock's rich architectural heritage. Its multi-level form offers spectacular views across Gauging Square and reveals new vistas across the capital.”

*Andrew Taylor, Architect, Patel Taylor*

# ALEXANDER WHARF

**Designed by world renowned architects, Patel Taylor, Alexander Wharf is the shimmering new landmark for London Dock, with its bold, reflective façades maximising the feeling of space and light.**

Overlooking the spectacular Gauging Square – the centrepiece of London Dock – the terraces and balconies of Alexander Wharf make the very best of its position at the heart of this unique development.





Computer-generated images are indicative only





Computer-generated images are indicative only.



## A STYLISH ENTRANCE

**With exquisite interior designed entrance lobbies and corridors, Alexander Wharf sets a new benchmark, with distinctive design and quality materials throughout.**

The stylish Entrance Lobby, with relaxing seating area, creates the perfect welcome. Dual lifts lead to all floors, where the interior design continues throughout the individual corridors, creating a seamless journey to your apartment.

# THE APARTMENTS

The apartments at London Dock offer the opportunity to live at the heart of London's most vibrant new destination.

Inspired by the heritage of the area, the chic design combines stylish interiors and technologies, creating exceptional spaces for living, relaxing and entertaining.



## Sleek and sophisticated

The open plan living spaces are flooded with light, complemented by fine detail and craftsmanship.

Computer-generated images are indicative only





**The heart of the home**  
Bespoke kitchens with integrated appliances and subtle lighting are the ideal spaces for formal or relaxed entertaining.

Computer-generated images are indicative only





Computer-generated images are indicative only

**Calming and elegant**  
Unwind in a tranquil retreat, designed with your comfort in mind. Stylish and meticulously finished, the bedrooms form the perfect place to relax.



Computer-generated images are indicative only



**A space to unwind**  
Featuring light stone or marble, bathrooms at London Dock offer a spa-like atmosphere, designed with your comfort in mind.





### Outdoor living

Enjoy breakfast in the morning sun overlooking the capital, gather with friends for brunch or relax with a drink at twilight, as the capital is transformed into a glittering sea of lights.





“The design draws inspiration from the luxury goods of the day that passed through the docks, from silks and wools, to tea and wine.”

*Fouad Qebrawi, Interior Architect, 1508 London*

## INTERIOR DESIGN

**London Dock was a destination for the most refined cargo from around the world. Reflecting its illustrious history, the interior design has woven a tapestry rich in textures, materials and colours.**

St George appointed leading interior architect, 1508 London, to create a seamless transition between the exterior and interiors. Their inspirational designs reflect the architectural and landscaping palette, drawing on its past as a trading post in luxury goods – from silks, woods and wools, to teas, coffee, rum and fine wine.





# SETTING NEW STANDARDS

**The apartment designs at London Dock take inspiration from the diverse imports and exports that passed through its gates, with colours, textures and materials combining to produce crisp, clean interiors.**

Choose from three stylish palettes – Fresco, with its glistening fresh tints, Chiaro, offering light natural tones, or Ricco, featuring rich greys and browns.



FRESCO

Stylish and alluring, subtle greys are accentuated by a shimmering oyster grey composite stone worktop, offset by delicate white lacquer joinery with carefully chosen fittings.



CHIARO

Natural oak flooring is complemented by a light beige palette, producing subtle warm overtones. Bedrooms feature elegant light grey wardrobes, with chic polished chrome and ceramic tiles to bathrooms.



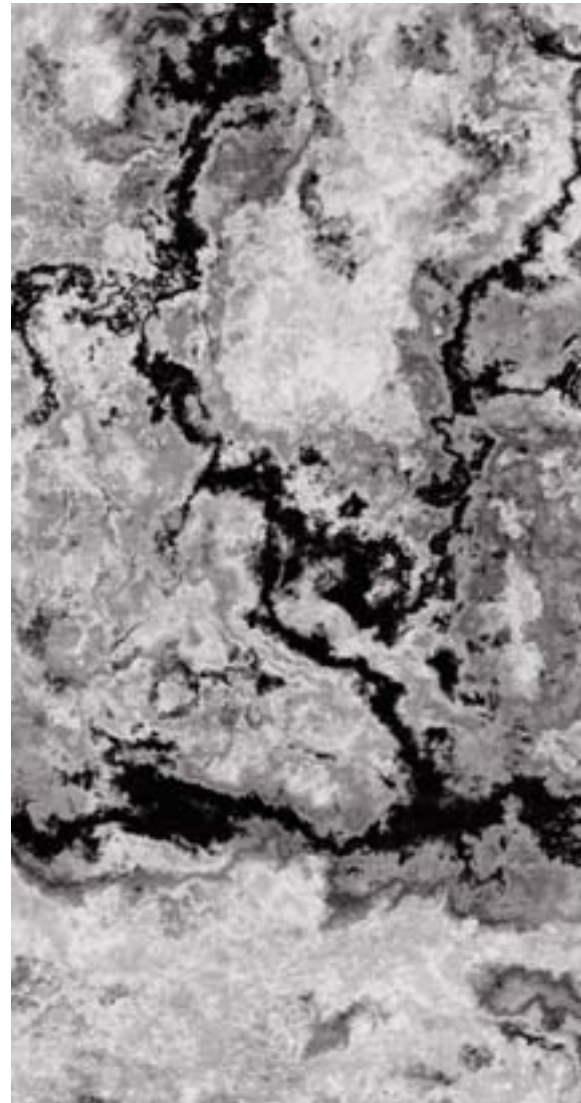
RICCO

Soft tonal greys and dark browns work in unison to create a refined palette. Beautiful silver-grey oak flooring provides a delicate contrast to the plush wool carpet of the bedrooms.

## PREMIER FINISHES

**The Premier apartments at London Dock bring further levels of quality and style, with materials and finishes reflecting the Docks' history.**

Three exquisite interior design palettes have been created - Notturmo, with contrasts of light and dark, Aurora, capturing the warmth of the morning sun, or Argento, a sophisticated combination of soft silvers and greys.



**NOTTURNO**

A seamless juxtaposition of light and dark tones, white oak flooring complemented by dark grey marble and white lacquer joinery in the kitchen. In the bathrooms, polished marble is accented by bright nickel taps to create an alluring feature element.



**AURORA**

Warm and welcoming, subtle combinations of grey and beige emanate timeless elegance and style, reminiscent of a sunrise over the River Thames. Carefully chosen accents including stitched internal wardrobe details add a subtle finishing touch.



**ARGENTO**

The embodiment of contemporary grandeur, immerse yourself in a spectrum of soft silvers and greys. A striking veined marble worktop provides the focal point of the kitchen, while bright nickel fittings accentuate the spa-like bathrooms.





## TECHNOLOGY AT YOUR FINGERTIPS

**At London Dock, technology will enhance your lifestyle, seamlessly integrated into your apartment.**

Available from the moment you move in, every apartment features a 1 year subscription to Sky, providing WiFi broadband access and satellite television, which can be enjoyed on your wide screen HD TV in the Living Room or any of your WiFi enabled devices. USB power sockets are also positioned throughout for your convenience.\*

Apartments are equipped with electronic dimmer controls to the Master Bedroom and Living Room, allowing light levels to be adjusted to suit the occasion, with mood lighting to Bathrooms.

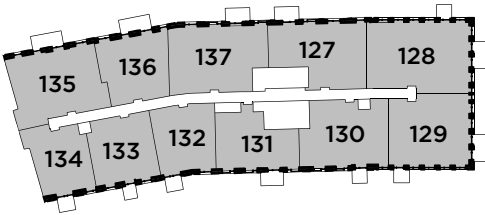
The 2 and 3 bedroom Premier specification apartments also include an audio system allowing music to be streamed directly to the Master Bedroom and En Suite, as well as fully customisable mood lighting to the Master Bedroom and Bathrooms. Use your iPad to control your environment, adjusting heating, cooling, light and sound, wherever you are, at home or away.

\*Please liaise with the Sales Consultants for further details

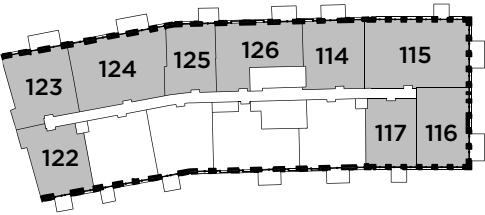
APARTMENT LOCATOR

1 AND 2 BED APARTMENTS

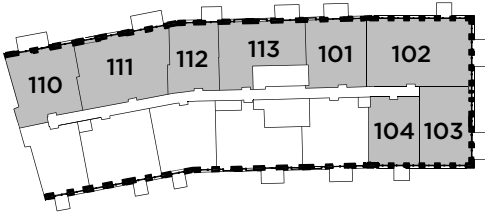
2 AND 3 BED PREMIER APARTMENTS



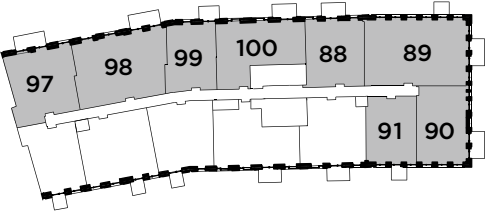
FOURTH FLOOR



THIRD FLOOR



SECOND FLOOR



FIRST FLOOR

APARTMENT SCHEDULE

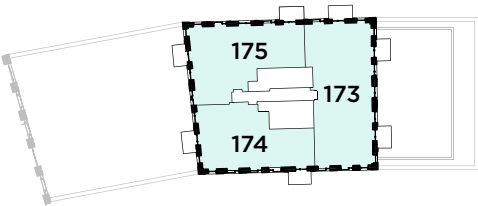
| APARTMENT | BEDROOMS                      | FLOOR | PAGE |
|-----------|-------------------------------|-------|------|
| 88        | 1 BEDROOM APARTMENT           | 1     | 37   |
| 89        | 2 BEDROOM APARTMENT           | 1     | 56   |
| 90        | 1 BEDROOM APARTMENT           | 1     | 38   |
| 91        | 1 BEDROOM MANHATTAN APARTMENT | 1     | 32   |
| 97        | 1 BEDROOM APARTMENT           | 1     | 39   |
| 98        | 2 BEDROOM APARTMENT           | 1     | 57   |
| 99        | 1 BEDROOM MANHATTAN APARTMENT | 1     | 33   |
| 100       | 1 BEDROOM APARTMENT           | 1     | 40   |
| 101       | 1 BEDROOM APARTMENT           | 2     | 37   |
| 102       | 2 BEDROOM APARTMENT           | 2     | 58   |
| 103       | 1 BEDROOM APARTMENT           | 2     | 41   |
| 104       | 1 BEDROOM MANHATTAN APARTMENT | 2     | 32   |
| 110       | 1 BEDROOM APARTMENT           | 2     | 39   |
| 111       | 2 BEDROOM APARTMENT           | 2     | 57   |
| 112       | 1 BEDROOM MANHATTAN APARTMENT | 2     | 33   |
| 113       | 1 BEDROOM APARTMENT           | 2     | 40   |
| 114       | 1 BEDROOM APARTMENT           | 3     | 42   |
| 115       | 2 BEDROOM APARTMENT           | 3     | 59   |
| 116       | 1 BEDROOM APARTMENT           | 3     | 43   |
| 117       | 1 BEDROOM MANHATTAN APARTMENT | 3     | 32   |
| 122       | 1 BEDROOM MANHATTAN APARTMENT | 3     | 34   |
| 123       | 1 BEDROOM APARTMENT           | 3     | 44   |
| 124       | 2 BEDROOM APARTMENT           | 3     | 60   |
| 125       | 1 BEDROOM MANHATTAN APARTMENT | 3     | 33   |
| 126       | 1 BEDROOM APARTMENT           | 3     | 40   |
| 127       | 2 BEDROOM APARTMENT           | 4     | 61   |
| 128       | 2 BEDROOM APARTMENT           | 4     | 62   |
| 129       | 2 BEDROOM APARTMENT           | 4     | 63   |
| 130       | 2 BEDROOM APARTMENT           | 4     | 64   |
| 131       | 1 BEDROOM APARTMENT           | 4     | 45   |
| 132       | 1 BEDROOM APARTMENT           | 4     | 46   |
| 133       | 1 BEDROOM APARTMENT           | 4     | 47   |
| 134       | 1 BEDROOM MANHATTAN APARTMENT | 4     | 35   |
| 135       | 2 BEDROOM APARTMENT           | 4     | 65   |
| 136       | 1 BEDROOM APARTMENT           | 4     | 48   |
| 137       | 2 BEDROOM APARTMENT           | 4     | 66   |



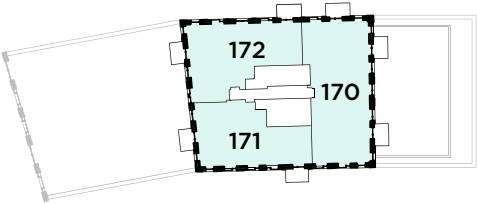
APARTMENT LOCATOR

1 AND 2 BED APARTMENTS

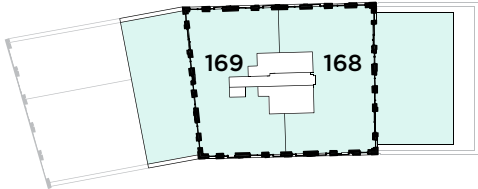
2 AND 3 BED PREMIER APARTMENTS



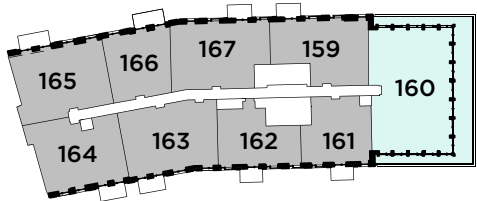
TENTH FLOOR



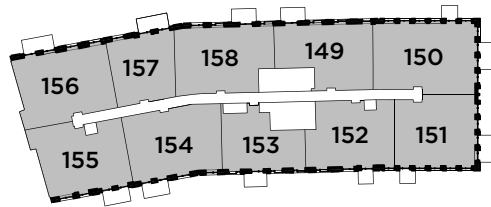
NINTH FLOOR



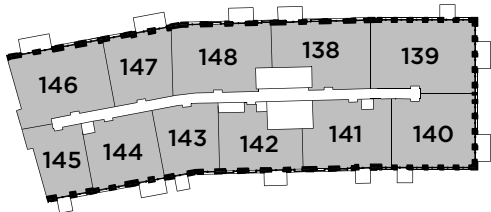
EIGHTH FLOOR



SEVENTH FLOOR



SIXTH FLOOR



FIFTH FLOOR

APARTMENT SCHEDULE

| APARTMENT | BEDROOMS                      | FLOOR | PAGE  |
|-----------|-------------------------------|-------|-------|
| 138       | 2 BEDROOM APARTMENT           | 5     | 67    |
| 139       | 2 BEDROOM APARTMENT           | 5     | 62    |
| 140       | 2 BEDROOM APARTMENT           | 5     | 63    |
| 141       | 2 BEDROOM APARTMENT           | 5     | 64    |
| 142       | 1 BEDROOM APARTMENT           | 5     | 45    |
| 143       | 1 BEDROOM APARTMENT           | 5     | 49    |
| 144       | 1 BEDROOM APARTMENT           | 5     | 50    |
| 145       | 1 BEDROOM MANHATTAN APARTMENT | 5     | 36    |
| 146       | 2 BEDROOM APARTMENT           | 5     | 68    |
| 147       | 1 BEDROOM APARTMENT           | 5     | 51    |
| 148       | 2 BEDROOM APARTMENT           | 5     | 66    |
| 149       | 2 BEDROOM APARTMENT           | 6     | 69    |
| 150       | 2 BEDROOM APARTMENT           | 6     | 62    |
| 151       | 2 BEDROOM APARTMENT           | 6     | 63    |
| 152       | 2 BEDROOM APARTMENT           | 6     | 70    |
| 153       | 1 BEDROOM APARTMENT           | 6     | 52    |
| 154       | 2 BEDROOM APARTMENT           | 6     | 71    |
| 155       | 2 BEDROOM APARTMENT           | 6     | 72    |
| 156       | 2 BEDROOM APARTMENT           | 6     | 73    |
| 157       | 1 BEDROOM APARTMENT           | 6     | 51    |
| 158       | 2 BEDROOM APARTMENT           | 6     | 74    |
| 159       | 2 BEDROOM APARTMENT           | 7     | 75    |
| 160       | 3 BEDROOM PREMIER APARTMENT   | 7     | 86-87 |
| 161       | 1 BEDROOM APARTMENT           | 7     | 53    |
| 162       | 1 BEDROOM APARTMENT           | 7     | 54    |
| 163       | 2 BEDROOM APARTMENT           | 7     | 71    |
| 164       | 2 BEDROOM APARTMENT           | 7     | 76    |
| 165       | 2 BEDROOM APARTMENT           | 7     | 73    |
| 166       | 1 BEDROOM APARTMENT           | 7     | 51    |
| 167       | 2 BEDROOM APARTMENT           | 7     | 77    |
| 168       | 3 BEDROOM PREMIER APARTMENT   | 8     | 88-89 |
| 169       | 3 BEDROOM PREMIER APARTMENT   | 8     | 90-91 |
| 170       | 3 BEDROOM PREMIER APARTMENT   | 9     | 92-93 |
| 171       | 2 BEDROOM PREMIER APARTMENT   | 9     | 80-81 |
| 172       | 2 BEDROOM PREMIER APARTMENT   | 9     | 82-83 |
| 173       | 3 BEDROOM PREMIER APARTMENT   | 10    | 92-93 |
| 174       | 2 BEDROOM PREMIER APARTMENT   | 10    | 80-81 |
| 175       | 2 BEDROOM PREMIER APARTMENT   | 10    | 84-85 |

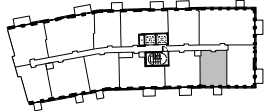
ONE BEDROOM MANHATTAN APARTMENT



|           |    |     |     |
|-----------|----|-----|-----|
| APARTMENT | 91 | 104 | 117 |
| FLOOR     | 01 | 02  | 03  |

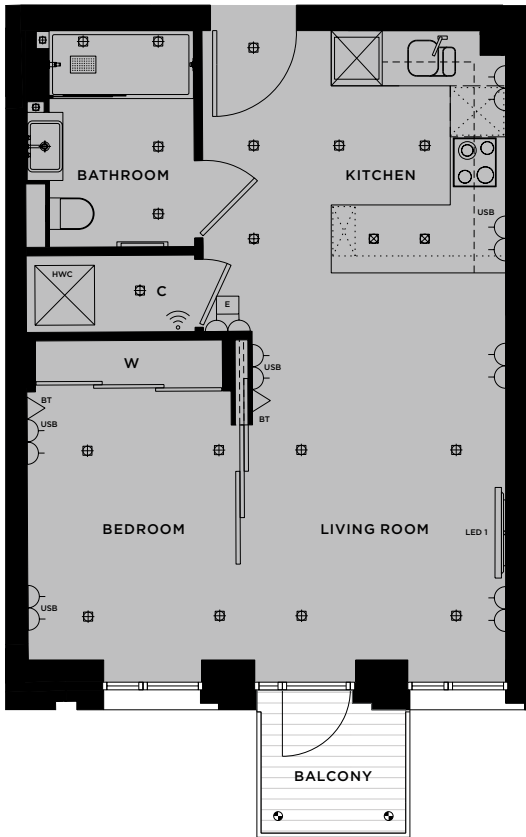


WEST ELEVATION



FLOORPLATE

|             |                 |               |
|-------------|-----------------|---------------|
| LIVING ROOM | 4.55m x 2.98m   | 15'0" x 9'9"  |
| KITCHEN     | 2.85m x 3.57m   | 9'4" x 11'9"  |
| BEDROOM     | 3.15m x 2.39m   | 10'4" x 7'10" |
| BALCONY     | 3m <sup>2</sup> | 30 sq ft      |



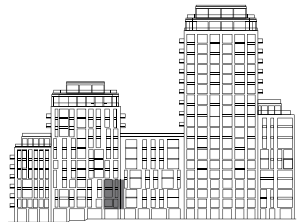
VIEWS WEST



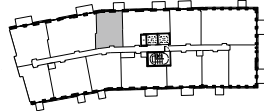
ONE BEDROOM MANHATTAN APARTMENT



|           |    |     |     |
|-----------|----|-----|-----|
| APARTMENT | 99 | 112 | 125 |
| FLOOR     | 01 | 02  | 03  |



EAST ELEVATION



FLOORPLATE

|             |                 |              |
|-------------|-----------------|--------------|
| LIVING ROOM | 4.55m x 2.66m   | 15'0" x 8'9" |
| KITCHEN     | 2.85m x 3.67m   | 9'4" x 12'0" |
| BEDROOM     | 3.15m x 2.55m   | 10'4" x 8'6" |
| BALCONY     | 4m <sup>2</sup> | 40 sq ft     |



VIEWS EAST OVER GAUGING SQUARE

KEY

|  |                         |  |   |  |  |  |  |
|--|-------------------------|--|---|--|--|--|--|
|  | WiFi Router and Sky box |  | Double Socket                                 |  | Kitchen / utility appliance below worktop  |  | 46" LED / HD TV mounted 1.4m from floor with 13A socket and cable duct to Sky+HD, TV / FM, BT and 2 x 13A double sockets below |
|  | Door entry system       |  | TV / FM, 2 x 13A double sockets and RF return |  | External Floor Light                       |  | TV mounting point 1.4m from floor with 13A socket and cable duct to Sky+HD, TV / FM, BT and 2 x 13A double sockets below       |
|  | BT / Home Network point |  | Hot Water Cylinder                            |  | Feature Downlight                          |  | Cupboard   |
|  | Single Socket           |  | Tall Kitchen unit                             |  | Recessed Downlight                         |  | Wardrobe   |
|  | USB Socket              |  | Fridge / Freezer                              |  | Heated wall with towel rail and robe hooks |  |  |

Floorplans shown for London Dock are for approximate measurements only. Exact layouts and sizes may vary. All measurements may vary within a tolerance of 5%. The dimensions are not intended to be used for carpet sizes, appliance sizes or items of furniture. Floorplate relates to lowest level apartment of that type.



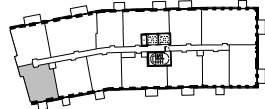
ONE BEDROOM MANHATTAN APARTMENT



|           |     |
|-----------|-----|
| APARTMENT | 122 |
| FLOOR     | 03  |

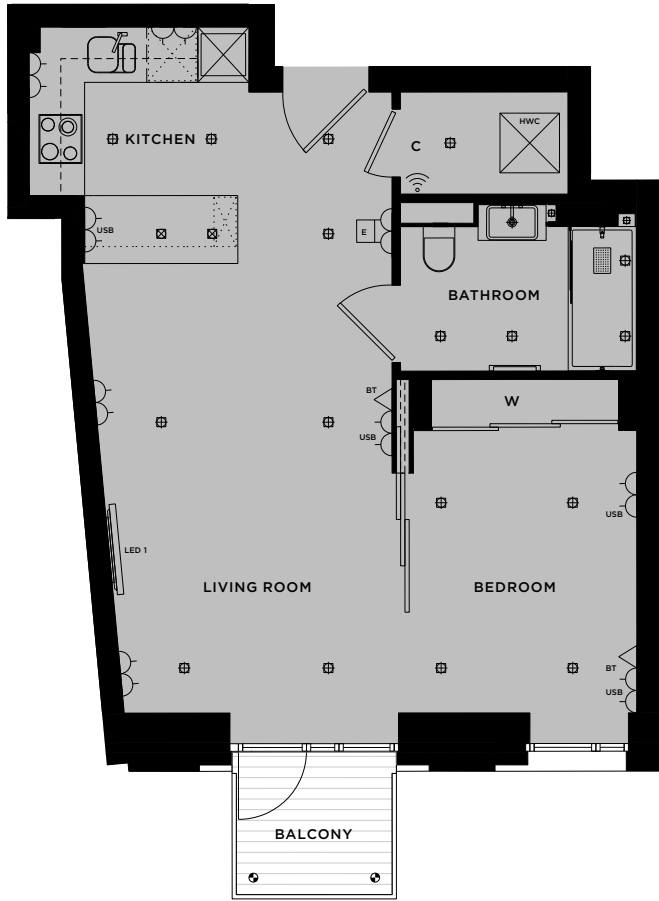


WEST ELEVATION



FLOORPLATE

|             |                 |               |
|-------------|-----------------|---------------|
| LIVING ROOM | 5.29m x 3.64m   | 17'4" x 12'0" |
| KITCHEN     | 2.78m x 3.61m   | 9'1" x 11'10" |
| BEDROOM     | 3.32m x 2.63m   | 11'0" x 8'7"  |
| BALCONY     | 3m <sup>2</sup> | 33 sq ft      |



VIEWS WEST



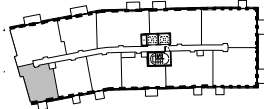
ONE BEDROOM MANHATTAN APARTMENT



|           |     |
|-----------|-----|
| APARTMENT | 134 |
| FLOOR     | 04  |

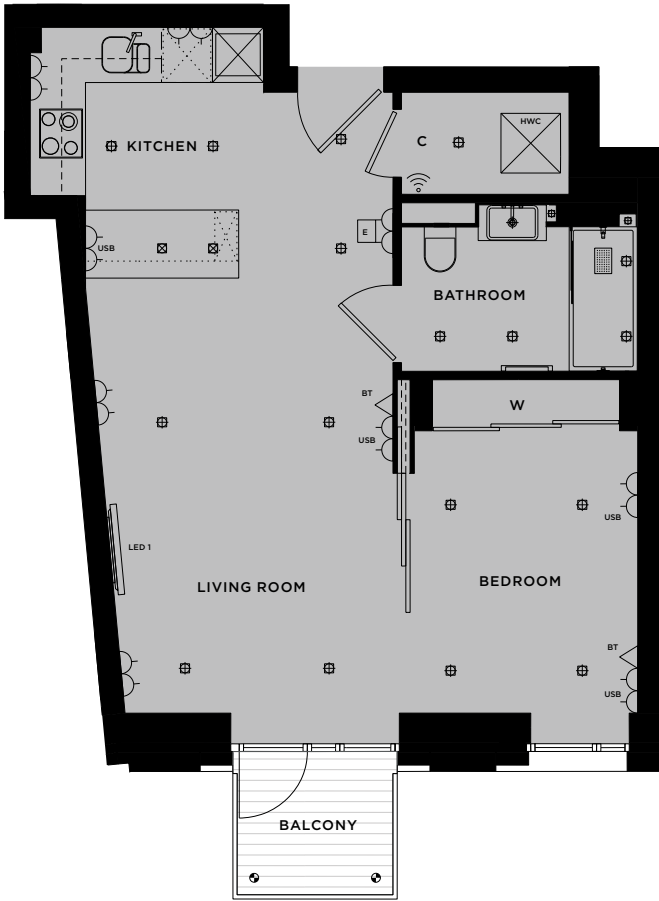


WEST ELEVATION



FLOORPLATE

|             |                 |                |
|-------------|-----------------|----------------|
| LIVING ROOM | 5.12m x 3.61m   | 16'9" x 11'10" |
| KITCHEN     | 2.95m x 3.61m   | 9'8" x 11'10"  |
| BEDROOM     | 3.32m x 2.63m   | 11'0" x 8'7"   |
| BALCONY     | 3m <sup>2</sup> | 33 sq ft       |



VIEWS WEST



KEY

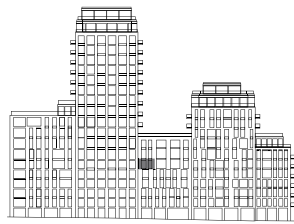
|  |                         |  |   |  |  |
|--|-------------------------|--|---|--|--|
|  | WiFi Router and Sky box |  | Double Socket                                 |  | Kitchen / utility appliance below worktop  |
|  | Door entry system       |  | TV / FM, 2 x 13A double sockets and RF return |  | External Floor Light   |
|  | BT / Home Network point |  | Hot Water Cylinder                            |  | Feature Downlight  |
|  | Single Socket           |  | Tall Kitchen unit                             |  | Recessed Downlight   |
|  | USB Socket              |  | Fridge / Freezer                              |  | Heated wall with towel rail and robe hooks   |
|  |                         |  |   |  | 46" LED / HD TV mounted 1.4m from floor with 13A socket and cable duct to Sky+HD, TV / FM, BT and 2 x 13A double sockets below |
|  |                         |  |   |  | TV mounting point 1.4m from floor with 13A socket and cable duct to Sky+HD, TV / FM, BT and 2 x 13A double sockets below       |
|  |                         |  |   |  | Cupboard   |
|  |                         |  |   |  | Wardrobe   |

Floorplans shown for London Dock are for approximate measurements only. Exact layouts and sizes may vary. All measurements may vary within a tolerance of 5%. The dimensions are not intended to be used for carpet sizes, appliance sizes or items of furniture. Floorplate relates to lowest level apartment of that type.

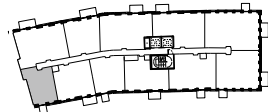
ONE BEDROOM MANHATTAN APARTMENT



|           |     |
|-----------|-----|
| APARTMENT | 145 |
| FLOOR     | 05  |

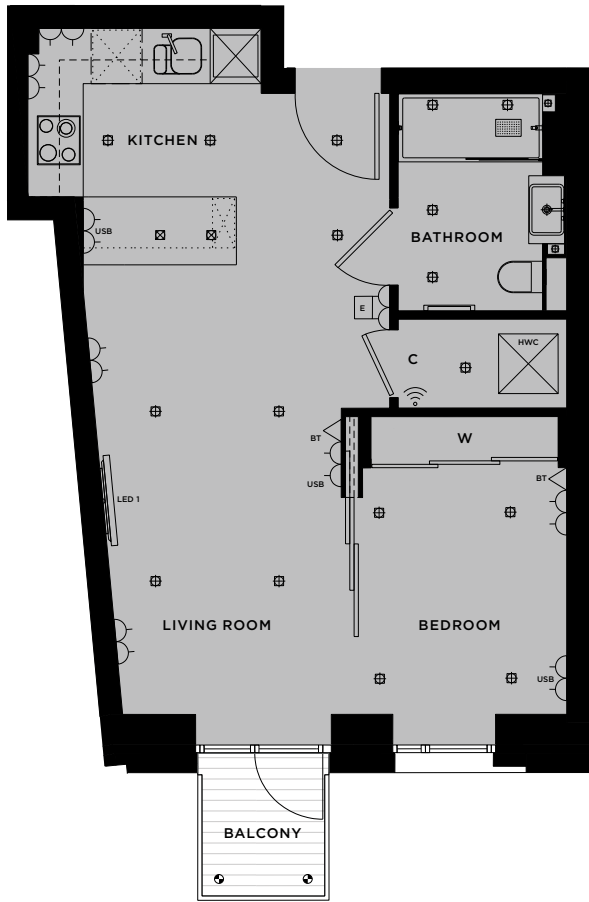


WEST ELEVATION



FLOORPLATE

|             |                 |               |
|-------------|-----------------|---------------|
| LIVING ROOM | 5.29m x 3.03m   | 17'4" x 10'0" |
| KITCHEN     | 2.78m x 3.60m   | 9'1" x 11'10" |
| BEDROOM     | 2.90m x 2.40m   | 9'6" x 7'10"  |
| BALCONY     | 2m <sup>2</sup> | 26 sq ft      |



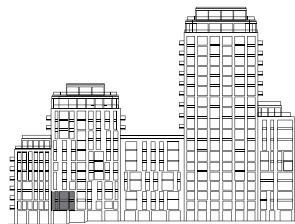
VIEWS WEST



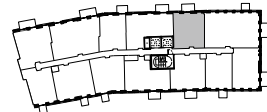
ONE BEDROOM APARTMENT



|           |    |     |
|-----------|----|-----|
| APARTMENT | 88 | 101 |
| FLOOR     | 01 | 02  |

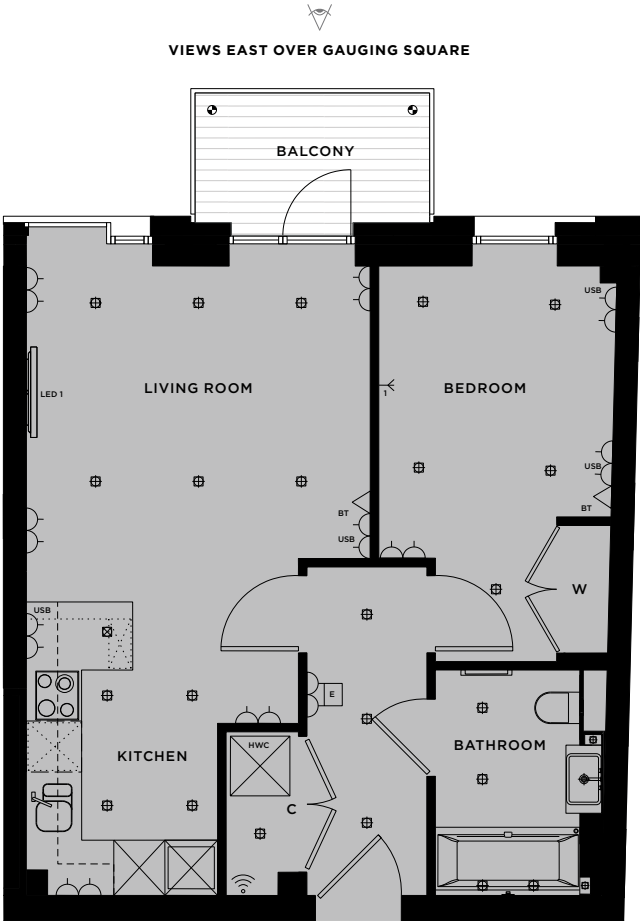


EAST ELEVATION



FLOORPLATE

|             |                 |               |
|-------------|-----------------|---------------|
| LIVING ROOM | 3.95m x 4.04m   | 13'0" x 13'3" |
| KITCHEN     | 3.45m x 3.20m   | 11'4" x 10'6" |
| BEDROOM     | 3.44m x 2.80m   | 11'3" x 9'2"  |
| BALCONY     | 4m <sup>2</sup> | 48 sq ft      |



VIEWS EAST OVER GAUGING SQUARE



KEY

- WiFi Router and Sky box
- Door entry system
- BT / Home Network point
- Single Socket
- USB Socket
- Double Socket
- TV / FM, 2 x 13A double sockets and RF return
- Hot Water Cylinder
- Tall Kitchen unit
- Fridge / Freezer
- Kitchen / utility appliance below worktop
- External Floor Light
- Feature Downlight
- Recessed Downlight
- Heated wall with towel rail and robe hooks
- 46" LED / HD TV mounted 1.4m from floor with 13A socket and cable duct to Sky+HD, TV / FM, BT and 2 x 13A double sockets below
- TV mounting point 1.4m from floor with 13A socket and cable duct to Sky+HD, TV / FM, BT and 2 x 13A double sockets below
- Cupboard
- Wardrobe

Floorplans shown for London Dock are for approximate measurements only. Exact layouts and sizes may vary. All measurements may vary within a tolerance of 5%. The dimensions are not intended to be used for carpet sizes, appliance sizes or items of furniture. Floorplate relates to lowest level apartment of that type.



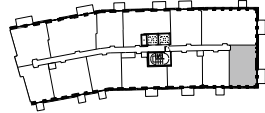
ONE BEDROOM APARTMENT



|           |    |
|-----------|----|
| APARTMENT | 90 |
| FLOOR     | 01 |

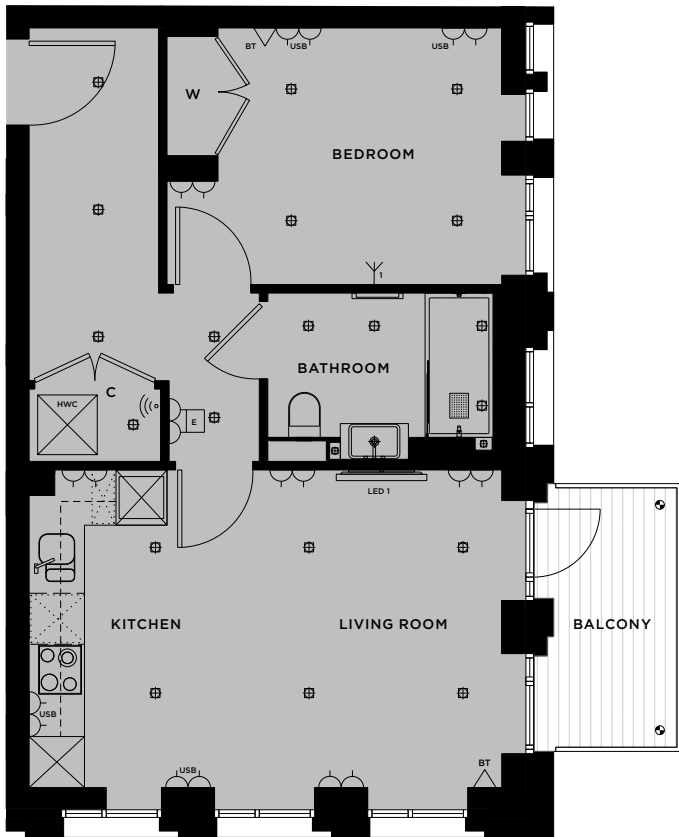


WEST ELEVATION



FLOORPLATE

|             |                 |               |
|-------------|-----------------|---------------|
| LIVING ROOM | 3.74m x 3.94m   | 12'3" x 13'0" |
| KITCHEN     | 3.74m x 1.62m   | 12'3" x 5'4"  |
| BEDROOM     | 3.02m x 3.34m   | 10'0" x 11'0" |
| BALCONY     | 5m <sup>2</sup> | 53 sq ft      |



VIEWS SOUTH

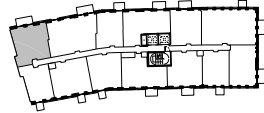
ONE BEDROOM APARTMENT



|           |    |     |
|-----------|----|-----|
| APARTMENT | 97 | 110 |
| FLOOR     | 01 | 02  |

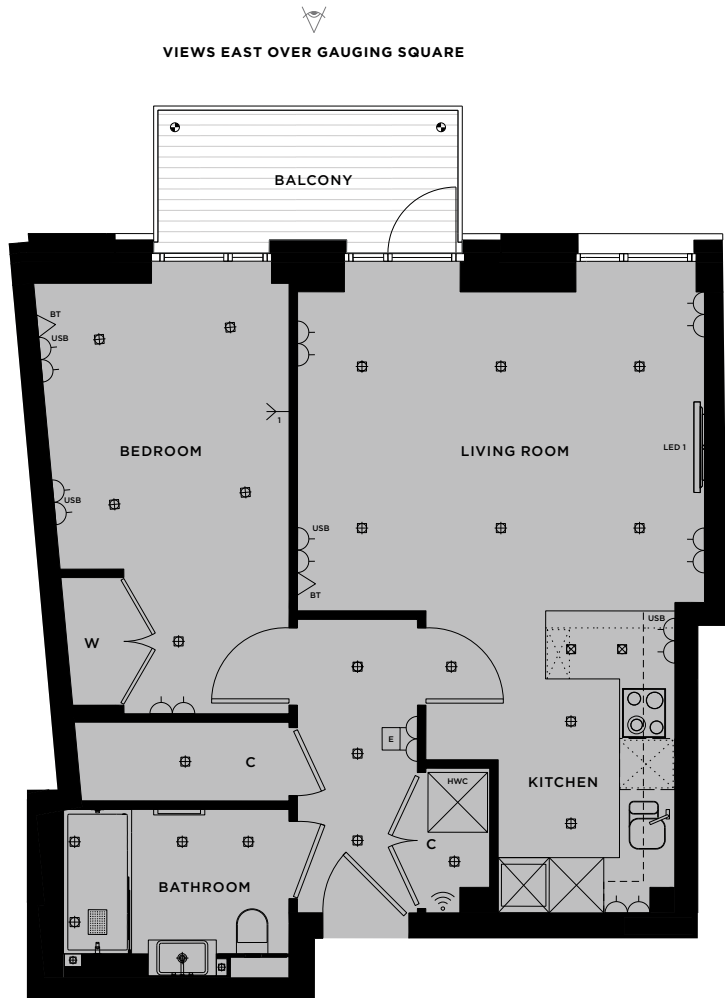


EAST ELEVATION



FLOORPLATE

|             |                 |               |
|-------------|-----------------|---------------|
| LIVING ROOM | 3.75m x 4.78m   | 12'4" x 15'8" |
| KITCHEN     | 3.55m x 2.93m   | 11'8" x 9'7"  |
| BEDROOM     | 5.06m x 3.00m   | 16'7" x 9'10" |
| BALCONY     | 6m <sup>2</sup> | 62 sq ft      |



VIEWS EAST OVER GAUGING SQUARE

KEY

- WiFi Router and Sky box

Door entry system

BT / Home Network point

Single Socket

USB Socket
- Double Socket

TV / FM, 2 x 13A double sockets and RF return

Hot Water Cylinder

Tall Kitchen unit

Fridge / Freezer
- Kitchen / utility appliance below worktop

External Floor Light

Feature Downlight

Recessed Downlight

Heated wall with towel rail and robe hooks
- 46" LED / HD TV mounted 1.4m from floor with 13A socket and cable duct to Sky+HD, TV / FM, BT and 2 x 13A double sockets below

TV mounting point 1.4m from floor with 13A socket and cable duct to Sky+HD, TV / FM, BT and 2 x 13A double sockets below

Cupboard

Wardrobe

Floorplans shown for London Dock are for approximate measurements only. Exact layouts and sizes may vary. All measurements may vary within a tolerance of 5%. The dimensions are not intended to be used for carpet sizes, appliance sizes or items of furniture. Floorplate relates to lowest level apartment of that type.

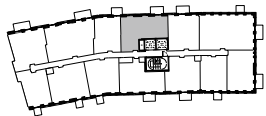
ONE BEDROOM APARTMENT



|           |     |     |     |
|-----------|-----|-----|-----|
| APARTMENT | 100 | 113 | 126 |
| FLOOR     | 01  | 02  | 03  |



EAST ELEVATION

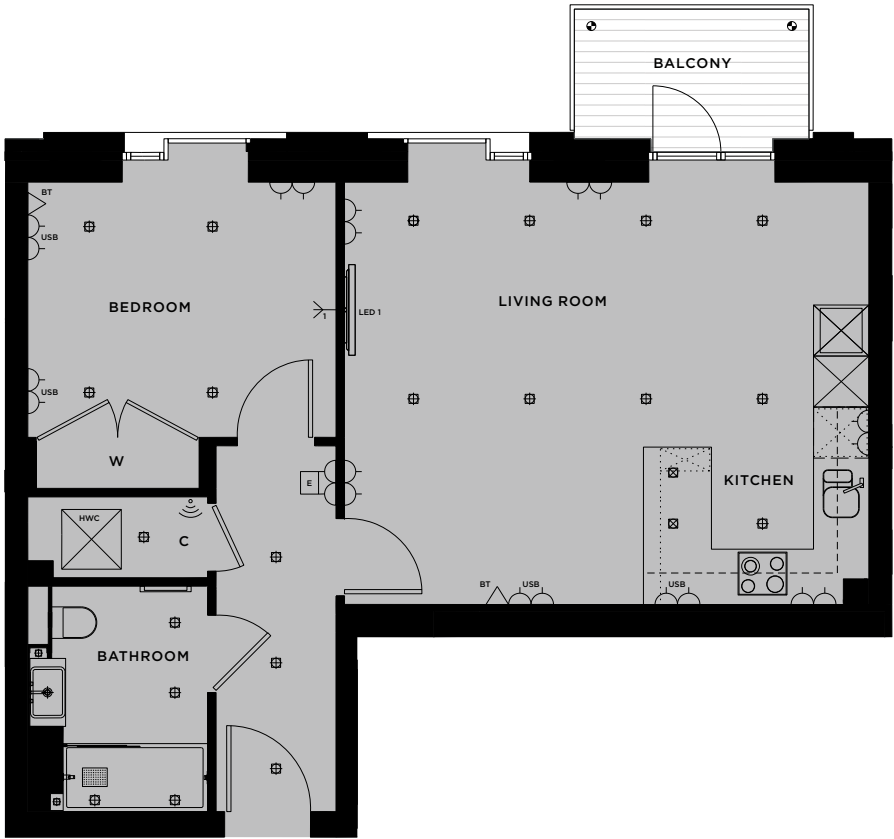


FLOORPLATE

|             |                 |               |
|-------------|-----------------|---------------|
| LIVING ROOM | 4.97m x 3.51m   | 16'3" x 11'6" |
| KITCHEN     | 4.97m x 2.65m   | 16'3" x 8'8"  |
| BEDROOM     | 3.00m x 3.62m   | 9'10" x 12'0" |
| BALCONY     | 4m <sup>2</sup> | 48 sq ft      |



VIEWS EAST OVER GAUGING SQUARE



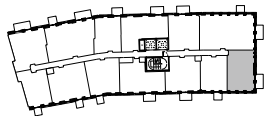
ONE BEDROOM APARTMENT



|           |     |
|-----------|-----|
| APARTMENT | 103 |
| FLOOR     | 02  |

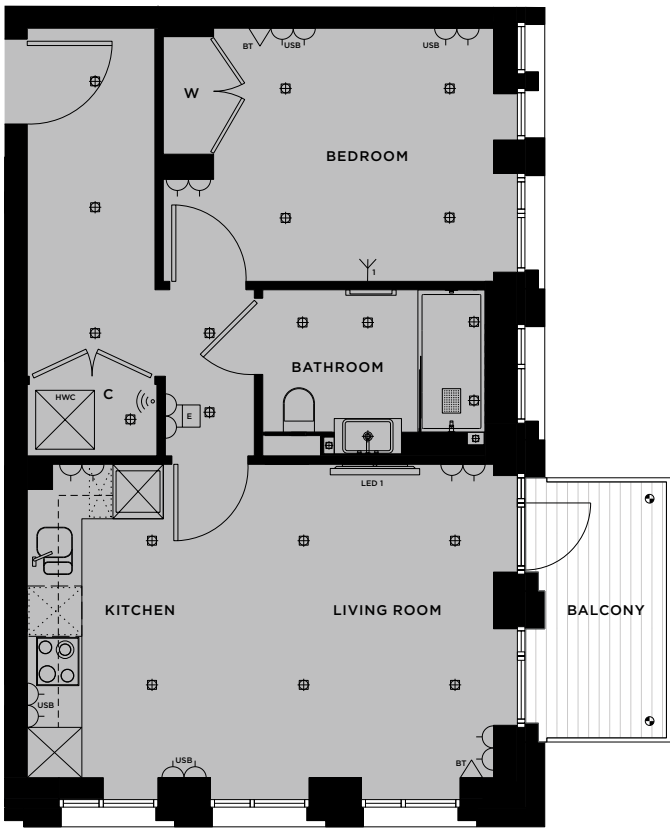


WEST ELEVATION



FLOORPLATE

|             |                 |               |
|-------------|-----------------|---------------|
| LIVING ROOM | 3.74m x 3.94m   | 12'3" x 13'0" |
| KITCHEN     | 3.74m x 1.62m   | 12'3" x 5'4"  |
| BEDROOM     | 3.02m x 3.34m   | 10'0" x 11'0" |
| BALCONY     | 5m <sup>2</sup> | 53 sq ft      |



VIEWS SOUTH

KEY

|  |                         |  |   |  |  |  |  |
|--|-------------------------|--|---|--|--|--|--|
|  | WiFi Router and Sky box |  | Double Socket                                 |  | Kitchen / utility appliance below worktop  |  | 46" LED / HD TV mounted 1.4m from floor with 13A socket and cable duct to Sky+HD, TV / FM, BT and 2 x 13A double sockets below |
|  | Door entry system       |  | TV / FM, 2 x 13A double sockets and RF return |  | External Floor Light                       |  | TV mounting point 1.4m from floor with 13A socket and cable duct to Sky+HD, TV / FM, BT and 2 x 13A double sockets below       |
|  | BT / Home Network point |  | Hot Water Cylinder                            |  | Feature Downlight                          |  | Cupboard   |
|  | Single Socket           |  | Tall Kitchen unit                             |  | Recessed Downlight                         |  | Wardrobe   |
|  | USB Socket              |  | Fridge / Freezer                              |  | Heated wall with towel rail and robe hooks |  |  |

Floorplans shown for London Dock are for approximate measurements only. Exact layouts and sizes may vary. All measurements may vary within a tolerance of 5%. The dimensions are not intended to be used for carpet sizes, appliance sizes or items of furniture. Floorplate relates to lowest level apartment of that type.



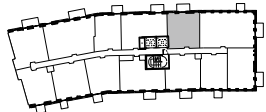
ONE BEDROOM APARTMENT



|           |     |
|-----------|-----|
| APARTMENT | 114 |
| FLOOR     | 03  |



EAST ELEVATION

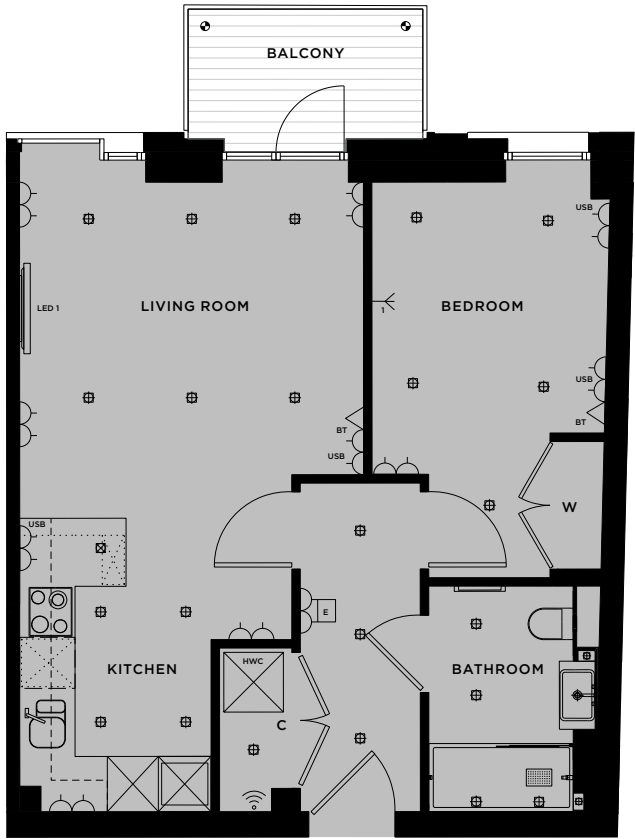


FLOORPLATE

|             |                 |               |
|-------------|-----------------|---------------|
| LIVING ROOM | 3.95m x 4.04m   | 13'0" x 13'3" |
| KITCHEN     | 3.45m x 3.20m   | 11'4" x 10'6" |
| BEDROOM     | 3.44m x 2.80m   | 11'3" x 9'2"  |
| BALCONY     | 4m <sup>2</sup> | 48 sq ft      |



VIEWS EAST OVER GAUGING SQUARE



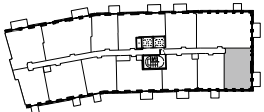
ONE BEDROOM APARTMENT



|           |     |
|-----------|-----|
| APARTMENT | 116 |
| FLOOR     | 03  |



WEST ELEVATION

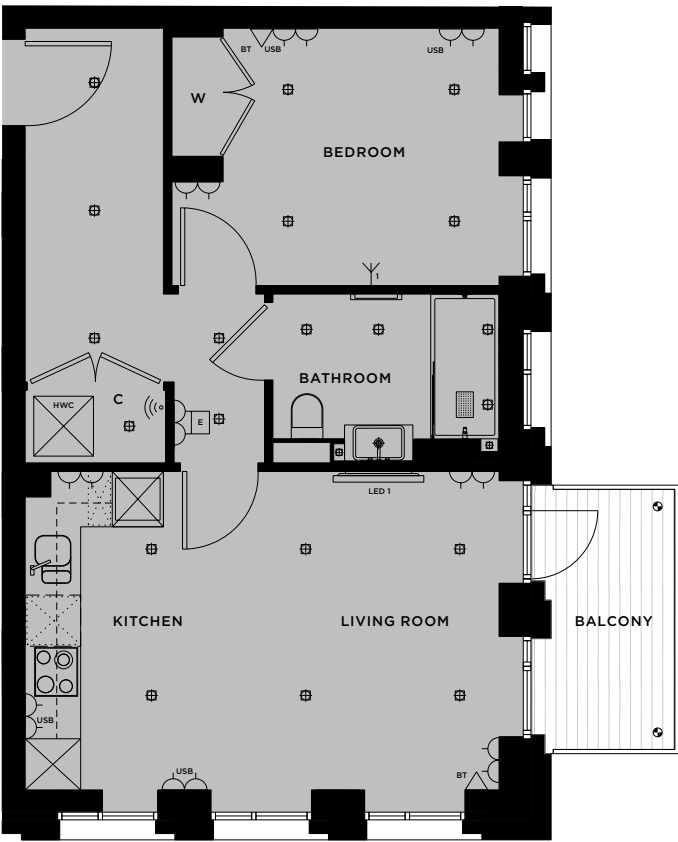


FLOORPLATE

|             |                 |               |
|-------------|-----------------|---------------|
| LIVING ROOM | 3.74m x 3.94m   | 12'3" x 13'0" |
| KITCHEN     | 3.74m x 1.62m   | 12'3" x 5'4"  |
| BEDROOM     | 3.02m x 3.24m   | 10'0" x 10'7" |
| BALCONY     | 5m <sup>2</sup> | 53 sq ft      |



VIEWS SOUTH



KEY

|  |                         |  |   |  |  |  |  |
|--|-------------------------|--|---|--|--|--|--|
|  | WiFi Router and Sky box |  | Double Socket                                 |  | Kitchen / utility appliance below worktop  |  | 46" LED / HD TV mounted 1.4m from floor with 13A socket and cable duct to Sky+HD, TV / FM, BT and 2 x 13A double sockets below |
|  | Door entry system       |  | TV / FM, 2 x 13A double sockets and RF return |  | External Floor Light                       |  | TV mounting point 1.4m from floor with 13A socket and cable duct to Sky+HD, TV / FM, BT and 2 x 13A double sockets below       |
|  | BT / Home Network point |  | Hot Water Cylinder                            |  | Feature Downlight                          |  | Cupboard   |
|  | Single Socket           |  | Tall Kitchen unit                             |  | Recessed Downlight                         |  | Wardrobe   |
|  | USB Socket              |  | Fridge / Freezer                              |  | Heated wall with towel rail and robe hooks |  |  |

Floorplans shown for London Dock are for approximate measurements only. Exact layouts and sizes may vary. All measurements may vary within a tolerance of 5%. The dimensions are not intended to be used for carpet sizes, appliance sizes or items of furniture. Floorplate relates to lowest level apartment of that type.

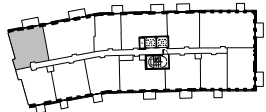
ONE BEDROOM APARTMENT



|           |     |
|-----------|-----|
| APARTMENT | 123 |
| FLOOR     | 03  |



EAST ELEVATION

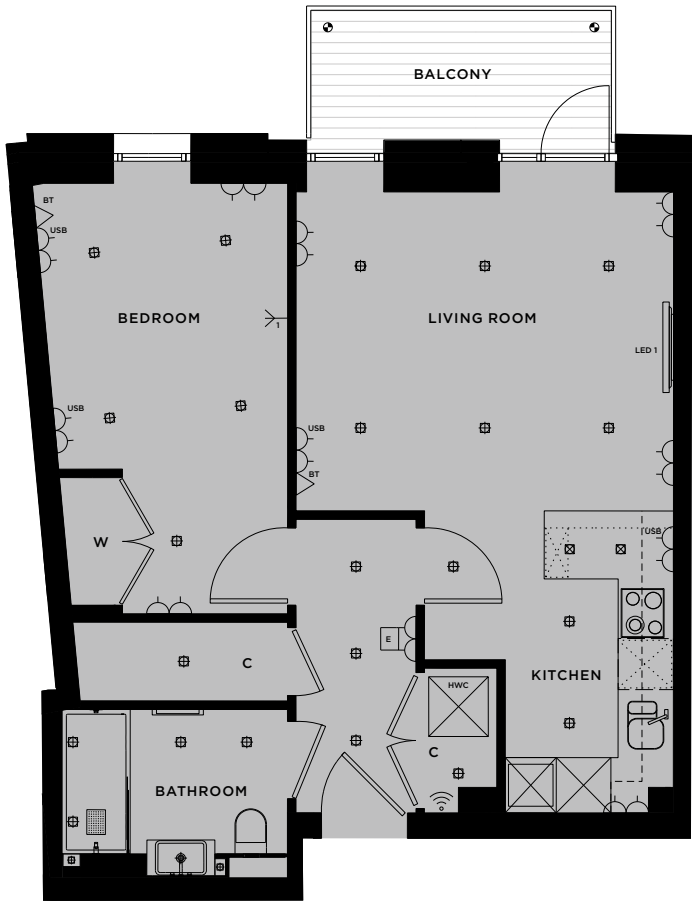


FLOORPLATE

|             |                 |               |
|-------------|-----------------|---------------|
| LIVING ROOM | 3.75m x 4.44m   | 12'4" x 14'7" |
| KITCHEN     | 3.55m x 2.93m   | 11'8" x 9'7"  |
| BEDROOM     | 5.06m x 3.00m   | 16'7" x 9'10" |
| BALCONY     | 6m <sup>2</sup> | 62 sq ft      |



VIEWS EAST OVER GAUGING SQUARE



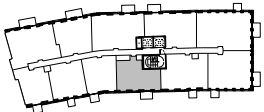
ONE BEDROOM APARTMENT



|           |     |     |
|-----------|-----|-----|
| APARTMENT | 131 | 142 |
| FLOOR     | 04  | 05  |



WEST ELEVATION



FLOORPLATE

|             |                 |               |
|-------------|-----------------|---------------|
| LIVING ROOM | 4.43m x 3.80m   | 14'6" x 12'6" |
| KITCHEN     | 4.43m x 2.65m   | 14'6" x 8'8"  |
| BEDROOM     | 4.45m x 2.90m   | 14'7" x 9'6"  |
| BALCONY     | 4m <sup>2</sup> | 44 sq ft      |



VIEWS WEST



KEY

|  |                         |  |   |  |  |
|--|-------------------------|--|---|--|--|
|  | WiFi Router and Sky box |  | Double Socket                                 |  | Kitchen / utility appliance below worktop  |
|  | Door entry system       |  | TV / FM, 2 x 13A double sockets and RF return |  | External Floor Light   |
|  | BT / Home Network point |  | Hot Water Cylinder                            |  | Feature Downlight  |
|  | Single Socket           |  | Tall Kitchen unit                             |  | Recessed Downlight   |
|  | USB Socket              |  | Fridge / Freezer                              |  | Heated wall with towel rail and robe hooks   |
|  |                         |  |   |  | 46" LED / HD TV mounted 1.4m from floor with 13A socket and cable duct to Sky+HD, TV / FM, BT and 2 x 13A double sockets below |
|  |                         |  |   |  | TV mounting point 1.4m from floor with 13A socket and cable duct to Sky+HD, TV / FM, BT and 2 x 13A double sockets below       |
|  |                         |  |   |  | Cupboard   |
|  |                         |  |   |  | Wardrobe   |

Floorplans shown for London Dock are for approximate measurements only. Exact layouts and sizes may vary. All measurements may vary within a tolerance of 5%. The dimensions are not intended to be used for carpet sizes, appliance sizes or items of furniture. Floorplate relates to lowest level apartment of that type.

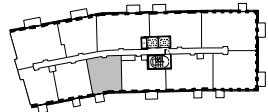
ONE BEDROOM APARTMENT



|           |     |
|-----------|-----|
| APARTMENT | 132 |
| FLOOR     | 04  |



WEST ELEVATION



FLOORPLATE

|             |                 |                |
|-------------|-----------------|----------------|
| LIVING ROOM | 4.35m x 3.90m   | 14'3" x 12'10" |
| KITCHEN     | 3.05m x 2.83m   | 10'0" x 9'3"   |
| BEDROOM     | 3.52m x 2.91m   | 11'7" x 9'7"   |
| BALCONY     | 3m <sup>2</sup> | 33 sq ft       |



VIEWS WEST



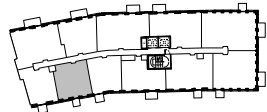
ONE BEDROOM APARTMENT



|           |     |
|-----------|-----|
| APARTMENT | 133 |
| FLOOR     | 04  |

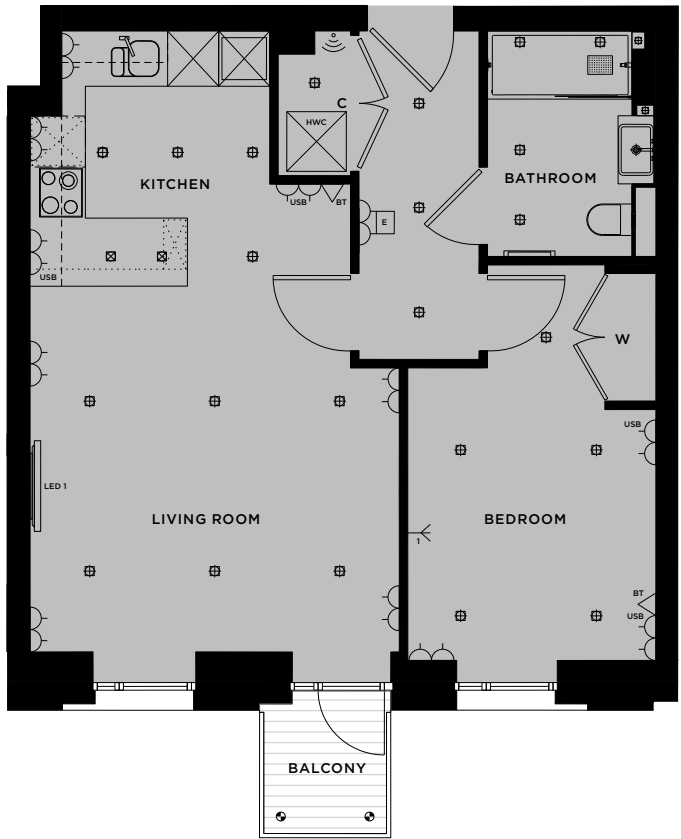


WEST ELEVATION



FLOORPLATE

|             |                 |               |
|-------------|-----------------|---------------|
| LIVING ROOM | 4.30m x 4.34m   | 14'1" x 14'3" |
| KITCHEN     | 3.00m x 2.82m   | 9'10" x 9'3"  |
| BEDROOM     | 3.44m x 2.92m   | 11'3" x 9'7"  |
| BALCONY     | 2m <sup>2</sup> | 26 sq ft      |



VIEWS WEST



KEY

|  |                         |  |   |  |  |
|--|-------------------------|--|---|--|--|
|  | WiFi Router and Sky box |  | Double Socket                                 |  | Kitchen / utility appliance below worktop  |
|  | Door entry system       |  | TV / FM, 2 x 13A double sockets and RF return |  | External Floor Light   |
|  | BT / Home Network point |  | Hot Water Cylinder                            |  | Feature Downlight  |
|  | Single Socket           |  | Tall Kitchen unit                             |  | Recessed Downlight   |
|  | USB Socket              |  | Fridge / Freezer                              |  | Heated wall with towel rail and robe hooks   |
|  |                         |  |   |  | 46" LED / HD TV mounted 1.4m from floor with 13A socket and cable duct to Sky+HD, TV / FM, BT and 2 x 13A double sockets below |
|  |                         |  |   |  | TV mounting point 1.4m from floor with 13A socket and cable duct to Sky+HD, TV / FM, BT and 2 x 13A double sockets below       |
|  |                         |  |   |  | Cupboard   |
|  |                         |  |   |  | Wardrobe   |

Floorplans shown for London Dock are for approximate measurements only. Exact layouts and sizes may vary. All measurements may vary within a tolerance of 5%. The dimensions are not intended to be used for carpet sizes, appliance sizes or items of furniture. Floorplate relates to lowest level apartment of that type.



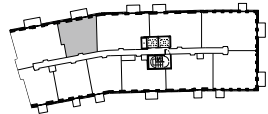
ONE BEDROOM APARTMENT



|           |     |
|-----------|-----|
| APARTMENT | 136 |
| FLOOR     | 04  |



EAST ELEVATION

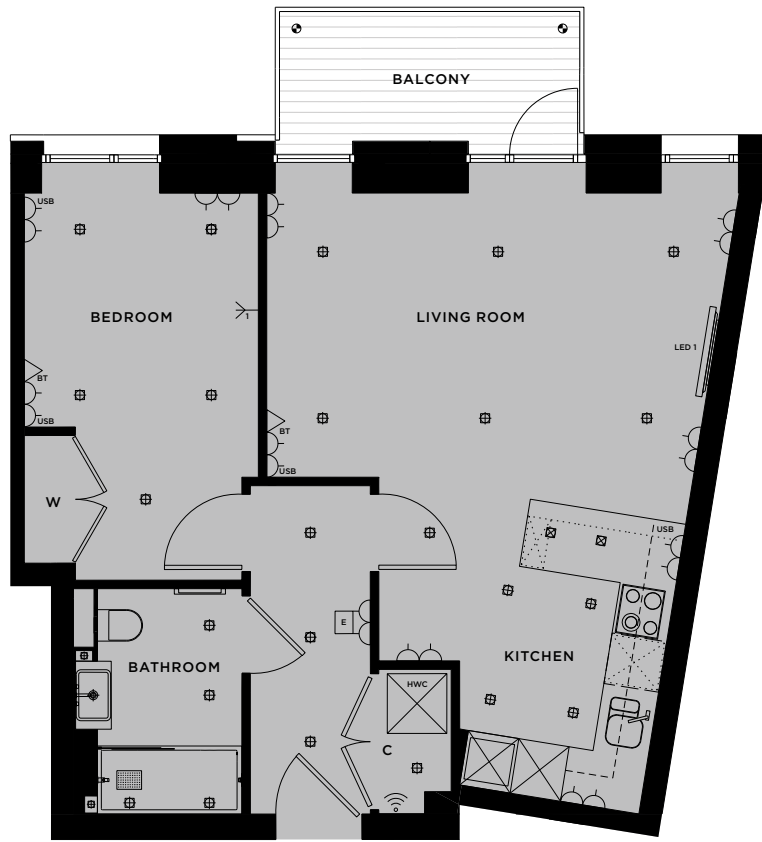


FLOORPLATE

|             |                 |               |
|-------------|-----------------|---------------|
| LIVING ROOM | 3.95m x 5.55m   | 13'0" x 18'3" |
| KITCHEN     | 3.45m x 3.65m   | 11'4" x 12'0" |
| BEDROOM     | 4.55m x 2.75m   | 15'0" x 9'0"  |
| BALCONY     | 6m <sup>2</sup> | 62 sq ft      |



VIEWS EAST OVER GAUGING SQUARE



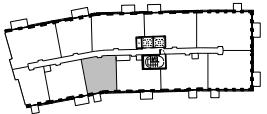
ONE BEDROOM APARTMENT



|           |     |
|-----------|-----|
| APARTMENT | 143 |
| FLOOR     | 05  |

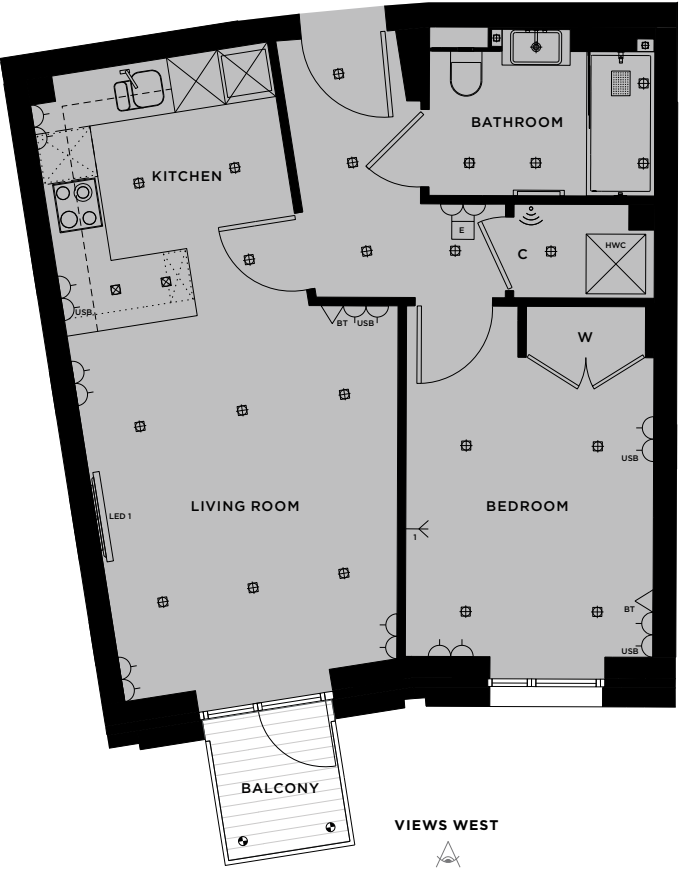


WEST ELEVATION



FLOORPLATE

|             |                 |                |
|-------------|-----------------|----------------|
| LIVING ROOM | 4.55m x 3.90m   | 15'0" x 12'10" |
| KITCHEN     | 2.85m x 2.87m   | 9'4" x 9'6"    |
| BEDROOM     | 3.52m x 2.91m   | 11'7" x 9'7"   |
| BALCONY     | 2m <sup>2</sup> | 26 sq ft       |



VIEWS WEST

KEY

|  |                         |  |   |  |  |  |  |
|--|-------------------------|--|---|--|--|--|--|
|  | WiFi Router and Sky box |  | Double Socket                                 |  | Kitchen / utility appliance below worktop  |  | 46" LED / HD TV mounted 1.4m from floor with 13A socket and cable duct to Sky+HD, TV / FM, BT and 2 x 13A double sockets below |
|  | Door entry system       |  | TV / FM, 2 x 13A double sockets and RF return |  | External Floor Light                       |  | TV mounting point 1.4m from floor with 13A socket and cable duct to Sky+HD, TV / FM, BT and 2 x 13A double sockets below       |
|  | BT / Home Network point |  | Hot Water Cylinder                            |  | Feature Downlight                          |  | Cupboard   |
|  | Single Socket           |  | Tall Kitchen unit                             |  | Recessed Downlight                         |  | Wardrobe   |
|  | USB Socket              |  | Fridge / Freezer                              |  | Heated wall with towel rail and robe hooks |  |  |

Floorplans shown for London Dock are for approximate measurements only. Exact layouts and sizes may vary. All measurements may vary within a tolerance of 5%. The dimensions are not intended to be used for carpet sizes, appliance sizes or items of furniture. Floorplate relates to lowest level apartment of that type.

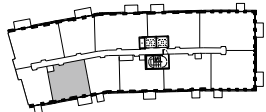
ONE BEDROOM APARTMENT



|           |     |
|-----------|-----|
| APARTMENT | 144 |
| FLOOR     | 05  |

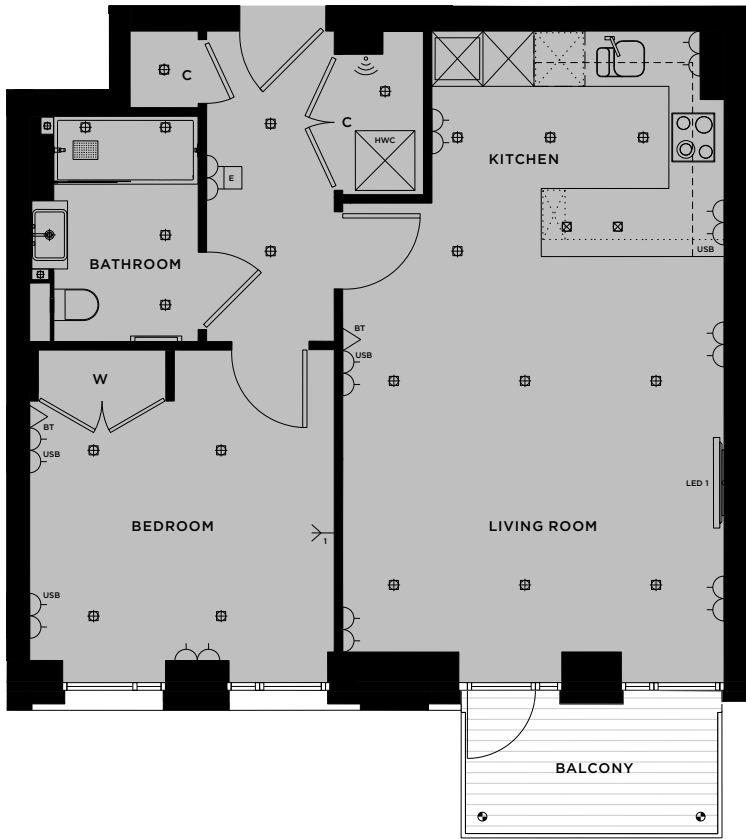


WEST ELEVATION



FLOORPLATE

|             |                 |               |
|-------------|-----------------|---------------|
| LIVING ROOM | 4.65m x 4.48m   | 15'3" x 14'9" |
| KITCHEN     | 2.65m x 3.44m   | 8'8" x 11'3"  |
| BEDROOM     | 3.65m x 3.58m   | 12'0" x 11'9" |
| BALCONY     | 5m <sup>2</sup> | 53 sq ft      |



VIEWS WEST



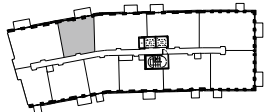
ONE BEDROOM APARTMENT



|           |     |     |     |
|-----------|-----|-----|-----|
| APARTMENT | 147 | 157 | 166 |
| FLOOR     | 05  | 06  | 07  |

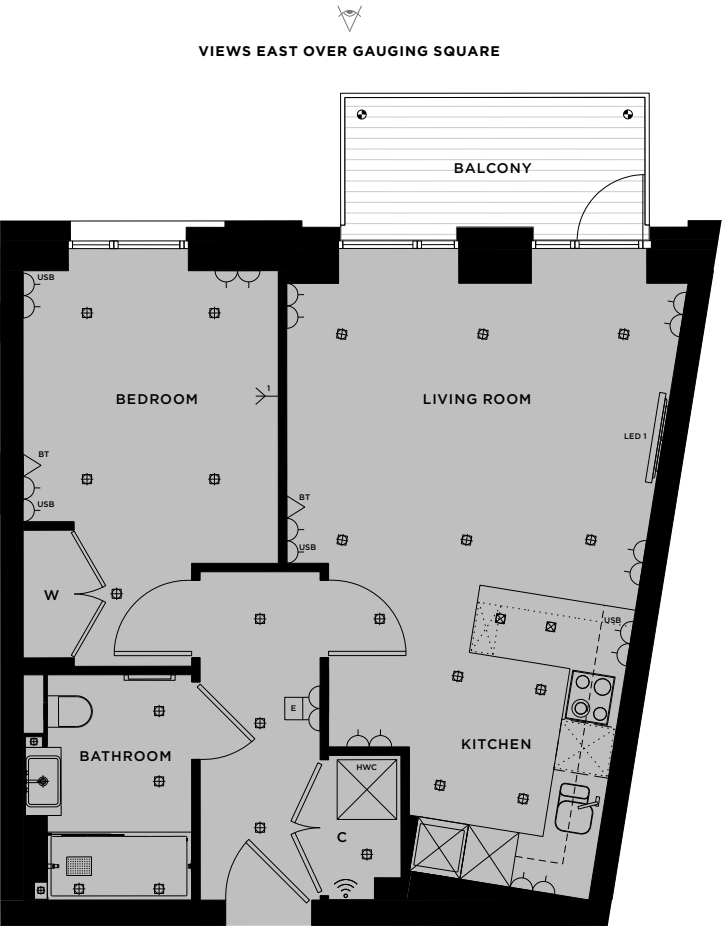


EAST ELEVATION



FLOORPLATE

|             |                 |               |
|-------------|-----------------|---------------|
| LIVING ROOM | 3.90m x 4.74m   | 12'9" x 15'7" |
| KITCHEN     | 3.45m x 3.65m   | 11'4" x 12'0" |
| BEDROOM     | 3.44m x 3.00m   | 11'3" x 9'10" |
| BALCONY     | 6m <sup>2</sup> | 62 sq ft      |



VIEWS EAST OVER GAUGING SQUARE



KEY

|  |                         |  |   |  |  |  |  |
|--|-------------------------|--|---|--|--|--|--|
|  | WiFi Router and Sky box |  | Double Socket                                 |  | Kitchen / utility appliance below worktop  |  | 46" LED / HD TV mounted 1.4m from floor with 13A socket and cable duct to Sky+HD, TV / FM, BT and 2 x 13A double sockets below |
|  | Door entry system       |  | TV / FM, 2 x 13A double sockets and RF return |  | External Floor Light                       |  | TV mounting point 1.4m from floor with 13A socket and cable duct to Sky+HD, TV / FM, BT and 2 x 13A double sockets below       |
|  | BT / Home Network point |  | Hot Water Cylinder                            |  | Feature Downlight                          |  | Cupboard   |
|  | Single Socket           |  | Tall Kitchen unit                             |  | Recessed Downlight                         |  | Wardrobe   |
|  | USB Socket              |  | Fridge / Freezer                              |  | Heated wall with towel rail and robe hooks |  |  |

Floorplans shown for London Dock are for approximate measurements only. Exact layouts and sizes may vary. All measurements may vary within a tolerance of 5%. The dimensions are not intended to be used for carpet sizes, appliance sizes or items of furniture. Floorplate relates to lowest level apartment of that type.

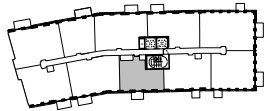
ONE BEDROOM APARTMENT



|           |     |
|-----------|-----|
| APARTMENT | 153 |
| FLOOR     | 06  |



WEST ELEVATION



FLOORPLATE

|             |                 |               |
|-------------|-----------------|---------------|
| LIVING ROOM | 4.43m x 3.80m   | 14'6" x 12'6" |
| KITCHEN     | 4.43m x 2.65m   | 14'6" x 8'8"  |
| BEDROOM     | 4.45m x 2.90m   | 14'7" x 9'6"  |
| BALCONY     | 4m <sup>2</sup> | 44 sq ft      |



VIEWS WEST



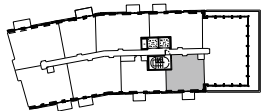
ONE BEDROOM APARTMENT



|           |     |
|-----------|-----|
| APARTMENT | 161 |
| FLOOR     | 07  |



WEST ELEVATION



FLOORPLATE

|             |                 |               |
|-------------|-----------------|---------------|
| LIVING ROOM | 3.23m x 4.64m   | 10'7" x 15'3" |
| KITCHEN     | 2.95m x 3.14m   | 9'8" x 10'4"  |
| BEDROOM     | 4.65m x 3.00m   | 15'3" x 9'10" |
| BALCONY     | 4m <sup>2</sup> | 44 sq ft      |



VIEWS WEST



KEY

|  |                         |  |   |  |  |
|--|-------------------------|--|---|--|--|
|  | WiFi Router and Sky box |  | Double Socket                                 |  | Kitchen / utility appliance below worktop  |
|  | Door entry system       |  | TV / FM, 2 x 13A double sockets and RF return |  | External Floor Light   |
|  | BT / Home Network point |  | Hot Water Cylinder                            |  | Feature Downlight  |
|  | Single Socket           |  | Tall Kitchen unit                             |  | Recessed Downlight   |
|  | USB Socket              |  | Fridge / Freezer                              |  | Heated wall with towel rail and robe hooks   |
|  |                         |  |   |  | Cupboard   |
|  |                         |  |   |  | Wardrobe   |
|  |                         |  |   |  | 46" LED / HD TV mounted 1.4m from floor with 13A socket and cable duct to Sky+HD, TV / FM, BT and 2 x 13A double sockets below |
|  |                         |  |   |  | TV mounting point 1.4m from floor with 13A socket and cable duct to Sky+HD, TV / FM, BT and 2 x 13A double sockets below       |

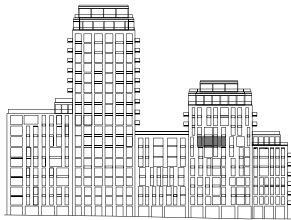
Floorplans shown for London Dock are for approximate measurements only. Exact layouts and sizes may vary. All measurements may vary within a tolerance of 5%. The dimensions are not intended to be used for carpet sizes, appliance sizes or items of furniture. Floorplate relates to lowest level apartment of that type.



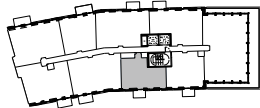
ONE BEDROOM APARTMENT



|           |     |
|-----------|-----|
| APARTMENT | 162 |
| FLOOR     | 07  |



WEST ELEVATION



FLOORPLATE

|             |                 |               |
|-------------|-----------------|---------------|
| LIVING ROOM | 4.43m x 3.80m   | 14'6" x 12'6" |
| KITCHEN     | 4.43m x 2.65m   | 14'6" x 8'8"  |
| BEDROOM     | 4.45m x 2.90m   | 14'7" x 9'6"  |
| BALCONY     | 4m <sup>2</sup> | 44 sq ft      |



VIEWS WEST



KEY

- WiFi Router and Sky box

Door entry system

BT / Home Network point

Single Socket

USB Socket
- Double Socket

TV / FM, 2 x 13A double sockets and RF return

Hot Water Cylinder

Tall Kitchen unit

Fridge / Freezer
- Kitchen / utility appliance below worktop

External Floor Light

Feature Downlight

Recessed Downlight

Heated wall with towel rail and robe hooks
- 46" LED / HD TV mounted 1.4m from floor with 13A socket and cable duct to Sky+HD, TV / FM, BT and 2 x 13A double sockets below

TV mounting point 1.4m from floor with 13A socket and cable duct to Sky+HD, TV / FM, BT and 2 x 13A double sockets below

Cupboard

Wardrobe

Floorplans shown for London Dock are for approximate measurements only. Exact layouts and sizes may vary. All measurements may vary within a tolerance of 5%. The dimensions are not intended to be used for carpet sizes, appliance sizes or items of furniture. Floorplate relates to lowest level apartment of that type.



Computer-generated images are indicative only

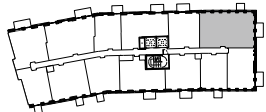
TWO BEDROOM APARTMENT



|           |    |
|-----------|----|
| APARTMENT | 89 |
| FLOOR     | 01 |



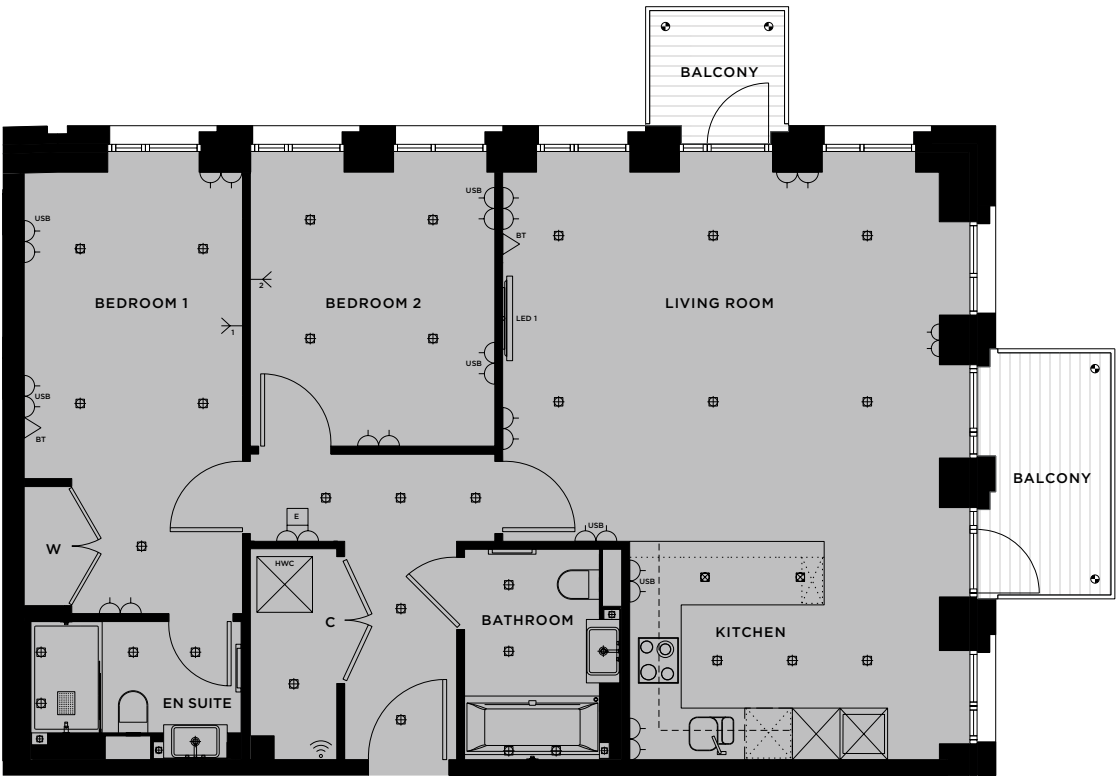
EAST ELEVATION



FLOORPLATE

|             |                 |               |
|-------------|-----------------|---------------|
| LIVING ROOM | 4.65m x 5.50m   | 15'3" x 18'1" |
| KITCHEN     | 2.75m x 3.90m   | 9'0" x 12'10" |
| BEDROOM 1   | 5.56m x 2.75m   | 18'3" x 9'0"  |
| BEDROOM 2   | 3.45m x 3.08m   | 11'4" x 10'1" |
| BALCONIES   | 8m <sup>2</sup> | 83 sq ft      |

VIEWS EAST OVER GAUGING SQUARE



VIEWS SOUTH

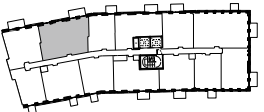
TWO BEDROOM APARTMENT



|           |    |     |
|-----------|----|-----|
| APARTMENT | 98 | 111 |
| FLOOR     | 01 | 02  |



EAST ELEVATION



FLOORPLATE

|             |                 |               |
|-------------|-----------------|---------------|
| LIVING ROOM | 4.40m x 5.03m   | 14'6" x 16'6" |
| KITCHEN     | 3.05m x 4.08m   | 10'0" x 13'4" |
| BEDROOM 1   | 4.55m x 2.90m   | 15'0" x 9'6"  |
| BEDROOM 2   | 4.12m x 2.90m   | 13'6" x 9'6"  |
| BALCONY     | 6m <sup>2</sup> | 62 sq ft      |

VIEWS EAST OVER GAUGING SQUARE



KEY

- WiFi Router and Sky box
- Door entry system
- BT / Home Network point
- Single Socket
- USB Socket
- Double Socket
- TV / FM, 2 x 13A double sockets and RF return
- Hot Water Cylinder
- Tall Kitchen unit
- Fridge / Freezer
- Kitchen / utility appliance below worktop
- External Floor Light
- Feature Downlight
- Recessed Downlight
- Heated wall with towel rail and robe hooks
- 46" LED / HD TV mounted 1.4m from floor with 13A socket and cable duct to Sky+HD, TV / FM, BT and 2 x 13A double sockets below
- TV mounting point 1.4m from floor with 13A socket and cable duct to Sky+HD, TV / FM, BT and 2 x 13A double sockets below
- Cupboard
- Wardrobe

Floorplans shown for London Dock are for approximate measurements only. Exact layouts and sizes may vary. All measurements may vary within a tolerance of 5%. The dimensions are not intended to be used for carpet sizes, appliance sizes or items of furniture. Floorplate relates to lowest level apartment of that type.

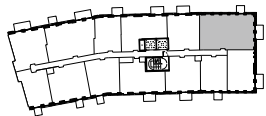
TWO BEDROOM APARTMENT



|           |     |
|-----------|-----|
| APARTMENT | 102 |
| FLOOR     | 02  |



EAST ELEVATION

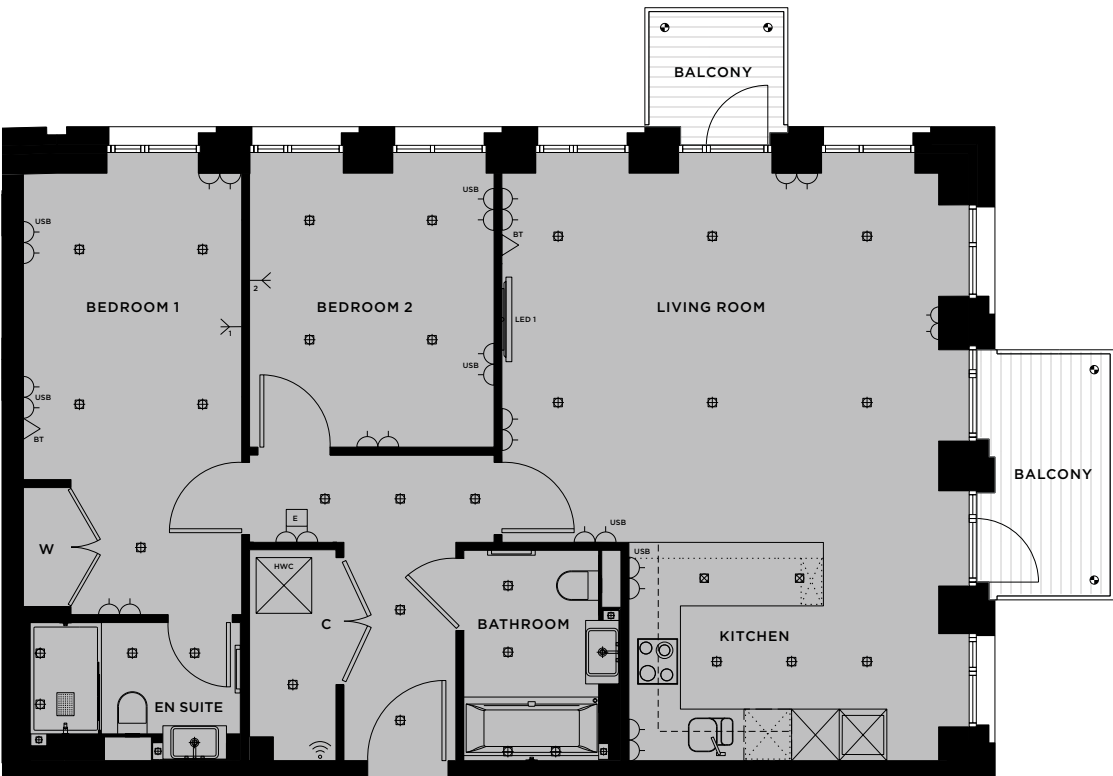


FLOORPLATE

|             |                 |               |
|-------------|-----------------|---------------|
| LIVING ROOM | 4.65m x 5.50m   | 15'3" x 18'1" |
| KITCHEN     | 2.75m x 3.90m   | 9'0" x 12'10" |
| BEDROOM 1   | 5.56m x 2.75m   | 18'3" x 9'0"  |
| BEDROOM 2   | 3.45m x 3.08m   | 11'4" x 10'1" |
| BALCONIES   | 8m <sup>2</sup> | 83 sq ft      |



VIEWS EAST OVER GAUGING SQUARE



VIEWS SOUTH

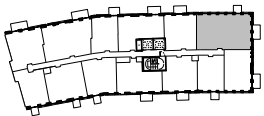
TWO BEDROOM APARTMENT



|           |     |
|-----------|-----|
| APARTMENT | 115 |
| FLOOR     | 03  |



EAST ELEVATION

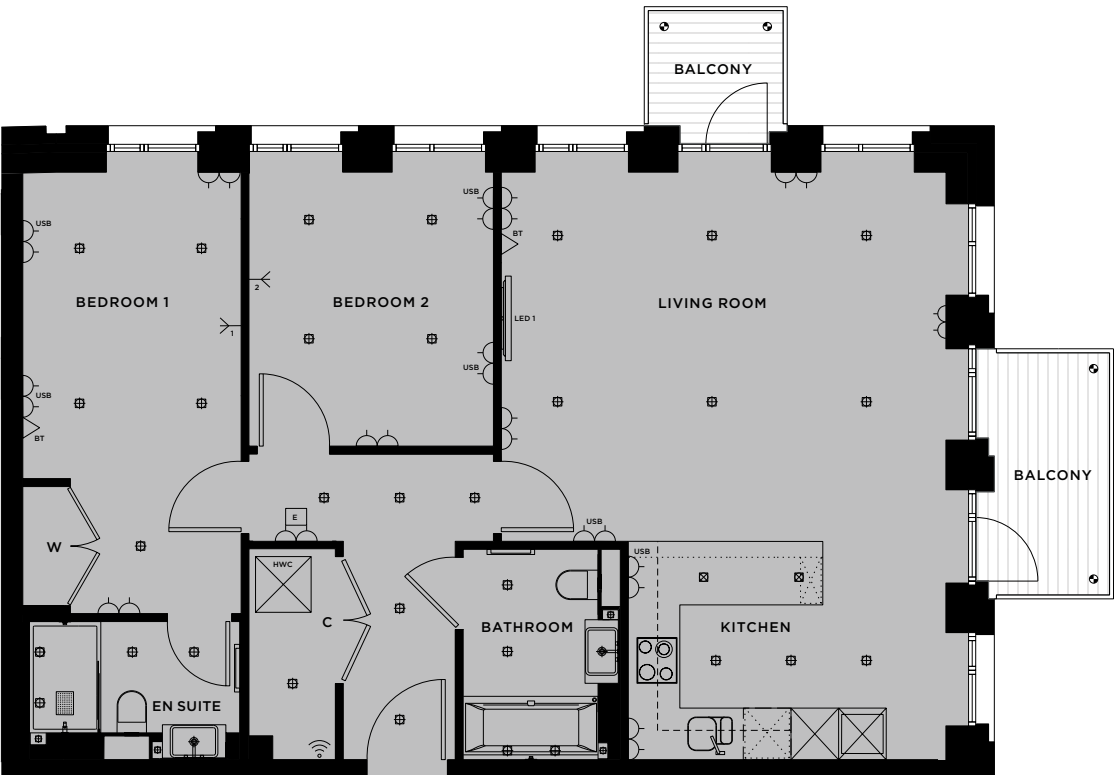


FLOORPLATE

|             |                 |               |
|-------------|-----------------|---------------|
| LIVING ROOM | 4.65m x 5.60m   | 15'3" x 18'4" |
| KITCHEN     | 2.75m x 4.00m   | 9'0" x 13'2"  |
| BEDROOM 1   | 5.56m x 2.75m   | 18'3" x 9'0"  |
| BEDROOM 2   | 3.45m x 3.08m   | 11'4" x 10'1" |
| BALCONIES   | 8m <sup>2</sup> | 83 sq ft      |



VIEWS EAST OVER GAUGING SQUARE



VIEWS SOUTH

KEY

|  |                         |  |   |  |  |  |  |
|--|-------------------------|--|---|--|--|--|--|
|  | WiFi Router and Sky box |  | Double Socket                                 |  | Kitchen / utility appliance below worktop  |  | 46" LED / HD TV mounted 1.4m from floor with 13A socket and cable duct to Sky+HD, TV / FM, BT and 2 x 13A double sockets below |
|  | Door entry system       |  | TV / FM, 2 x 13A double sockets and RF return |  | External Floor Light                       |  | TV mounting point 1.4m from floor with 13A socket and cable duct to Sky+HD, TV / FM, BT and 2 x 13A double sockets below       |
|  | BT / Home Network point |  | Hot Water Cylinder                            |  | Feature Downlight                          |  | Cupboard   |
|  | Single Socket           |  | Tall Kitchen unit                             |  | Recessed Downlight                         |  | Wardrobe   |
|  | USB Socket              |  | Fridge / Freezer                              |  | Heated wall with towel rail and robe hooks |  |  |

Floorplans shown for London Dock are for approximate measurements only. Exact layouts and sizes may vary. All measurements may vary within a tolerance of 5%. The dimensions are not intended to be used for carpet sizes, appliance sizes or items of furniture. Floorplate relates to lowest level apartment of that type.



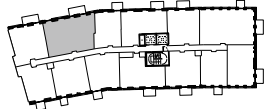
TWO BEDROOM APARTMENT



|           |     |
|-----------|-----|
| APARTMENT | 124 |
| FLOOR     | 03  |



EAST ELEVATION



FLOORPLATE

|             |                 |               |
|-------------|-----------------|---------------|
| LIVING ROOM | 4.34m x 5.53m   | 14'3" x 18'2" |
| KITCHEN     | 3.05m x 3.12m   | 10'0" x 10'3" |
| BEDROOM 1   | 4.02m x 2.90m   | 13'2" x 9'6"  |
| BEDROOM 2   | 4.12m x 2.75m   | 13'6" x 9'0"  |
| BALCONY     | 6m <sup>2</sup> | 62 sq ft      |



VIEWS EAST OVER GAUGING SQUARE



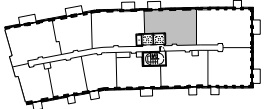
TWO BEDROOM APARTMENT



|           |     |
|-----------|-----|
| APARTMENT | 127 |
| FLOOR     | 04  |



EAST ELEVATION



FLOORPLATE

|             |                 |              |
|-------------|-----------------|--------------|
| LIVING ROOM | 4.97m x 2.88m   | 16'3" x 9'6" |
| KITCHEN     | 4.97m x 2.65m   | 16'3" x 8'8" |
| BEDROOM 1   | 4.65m x 2.80m   | 15'3" x 9'2" |
| BEDROOM 2   | 3.45m x 2.75m   | 11'4" x 9'0" |
| BALCONY     | 4m <sup>2</sup> | 48 sq ft     |



VIEWS EAST OVER GAUGING SQUARE



KEY

|  |                         |  |   |  |  |  |  |
|--|-------------------------|--|---|--|--|--|--|
|  | WiFi Router and Sky box |  | Double Socket                                 |  | Kitchen / utility appliance below worktop  |  | 46" LED / HD TV mounted 1.4m from floor with 13A socket and cable duct to Sky+HD, TV / FM, BT and 2 x 13A double sockets below |
|  | Door entry system       |  | TV / FM, 2 x 13A double sockets and RF return |  | External Floor Light                       |  | TV mounting point 1.4m from floor with 13A socket and cable duct to Sky+HD, TV / FM, BT and 2 x 13A double sockets below       |
|  | BT / Home Network point |  | Hot Water Cylinder                            |  | Feature Downlight                          |  | Cupboard   |
|  | Single Socket           |  | Tall Kitchen unit                             |  | Recessed Downlight                         |  | Wardrobe   |
|  | USB Socket              |  | Fridge / Freezer                              |  | Heated wall with towel rail and robe hooks |  |  |

Floorplans shown for London Dock are for approximate measurements only. Exact layouts and sizes may vary. All measurements may vary within a tolerance of 5%. The dimensions are not intended to be used for carpet sizes, appliance sizes or items of furniture. Floorplate relates to lowest level apartment of that type.

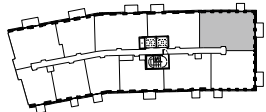
TWO BEDROOM APARTMENT



|           |     |     |     |
|-----------|-----|-----|-----|
| APARTMENT | 128 | 139 | 150 |
| FLOOR     | 04  | 05  | 06  |



EAST ELEVATION

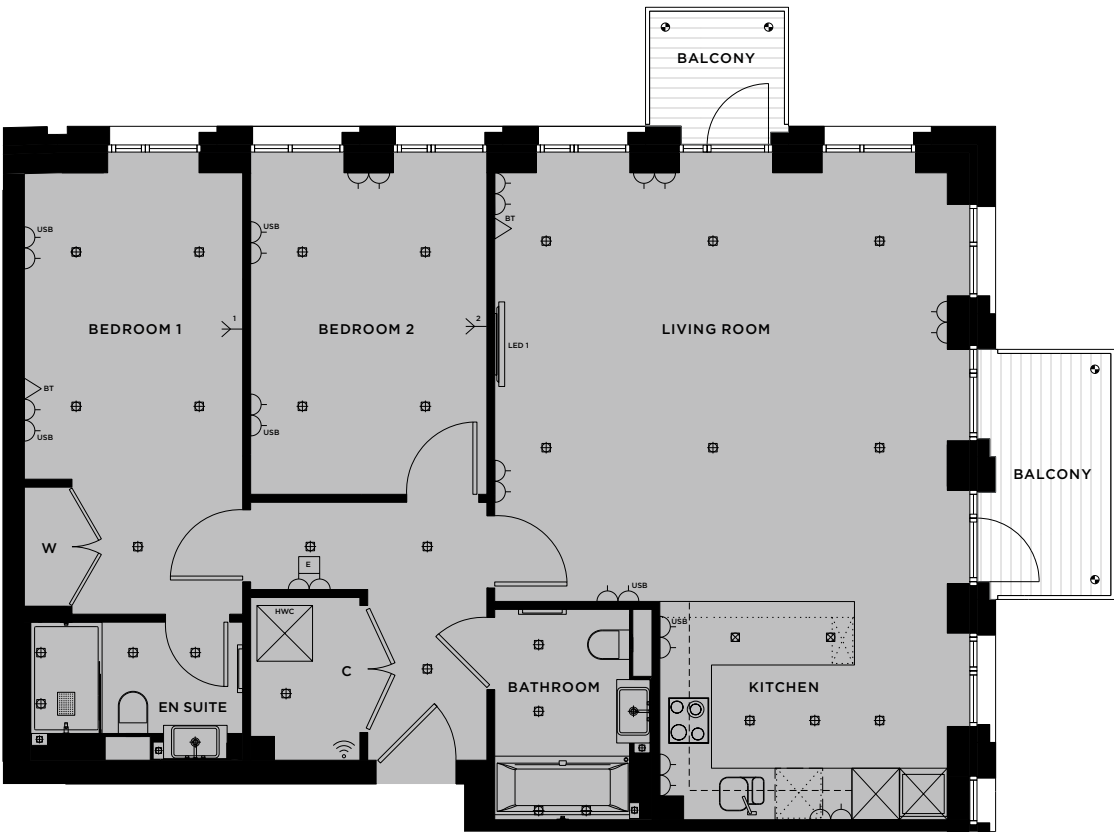


FLOORPLATE

|             |                 |               |
|-------------|-----------------|---------------|
| LIVING ROOM | 5.40m x 5.70m   | 17'9" x 18'8" |
| KITCHEN     | 2.75m x 3.62m   | 9'0" x 12'0"  |
| BEDROOM 1   | 5.56m x 2.75m   | 18'3" x 9'0"  |
| BEDROOM 2   | 4.05m x 2.98m   | 13'3" x 9'9"  |
| BALCONIES   | 8m <sup>2</sup> | 83 sq ft      |



VIEWS EAST OVER GAUGING SQUARE



VIEWS SOUTH

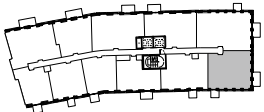
TWO BEDROOM APARTMENT



|           |     |     |     |
|-----------|-----|-----|-----|
| APARTMENT | 129 | 140 | 151 |
| FLOOR     | 04  | 05  | 06  |

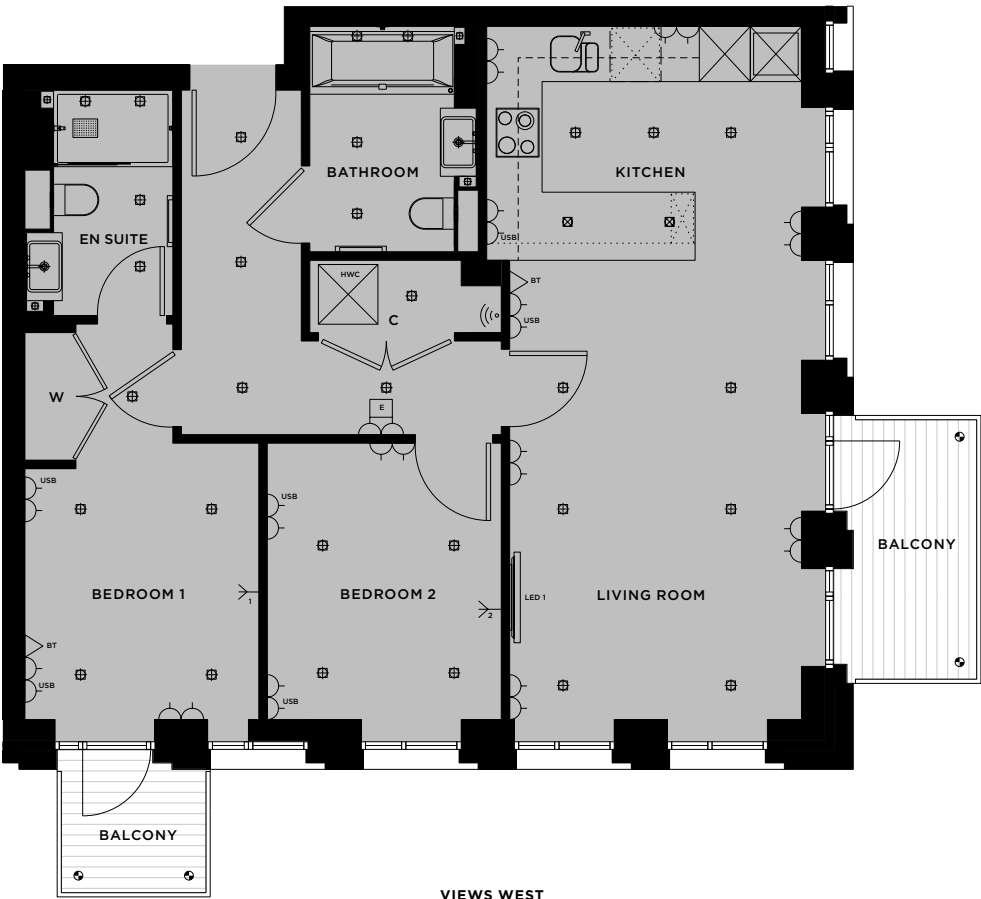


WEST ELEVATION



FLOORPLATE

|             |                 |               |
|-------------|-----------------|---------------|
| LIVING ROOM | 5.40m x 3.43m   | 17'9" x 11'3" |
| KITCHEN     | 2.75m x 3.70m   | 9'0" x 12'2"  |
| BEDROOM 1   | 3.25m x 2.75m   | 10'8" x 9'0"  |
| BEDROOM 2   | 3.25m x 2.75m   | 10'8" x 9'0"  |
| BALCONIES   | 8m <sup>2</sup> | 83 sq ft      |



VIEWS SOUTH



VIEWS WEST

KEY

|  |                         |  |   |  |  |  |  |
|--|-------------------------|--|---|--|--|--|--|
|  | WiFi Router and Sky box |  | Double Socket                                 |  | Kitchen / utility appliance below worktop  |  | 46" LED / HD TV mounted 1.4m from floor with 13A socket and cable duct to Sky+HD, TV / FM, BT and 2 x 13A double sockets below |
|  | Door entry system       |  | TV / FM, 2 x 13A double sockets and RF return |  | External Floor Light                       |  | TV mounting point 1.4m from floor with 13A socket and cable duct to Sky+HD, TV / FM, BT and 2 x 13A double sockets below       |
|  | BT / Home Network point |  | Hot Water Cylinder                            |  | Feature Downlight                          |  | Cupboard   |
|  | Single Socket           |  | Tall Kitchen unit                             |  | Recessed Downlight                         |  | Wardrobe   |
|  | USB Socket              |  | Fridge / Freezer                              |  | Heated wall with towel rail and robe hooks |  |  |

Floorplans shown for London Dock are for approximate measurements only. Exact layouts and sizes may vary. All measurements may vary within a tolerance of 5%. The dimensions are not intended to be used for carpet sizes, appliance sizes or items of furniture. Floorplate relates to lowest level apartment of that type.

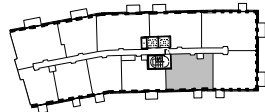
TWO BEDROOM APARTMENT



|           |     |     |
|-----------|-----|-----|
| APARTMENT | 130 | 141 |
| FLOOR     | 04  | 05  |



WEST ELEVATION



FLOORPLATE

|             |                 |               |
|-------------|-----------------|---------------|
| LIVING ROOM | 3.86m x 4.38m   | 12'8" x 14'4" |
| KITCHEN     | 3.45m x 2.81m   | 11'4" x 9'3"  |
| BEDROOM 1   | 3.83m x 2.87m   | 12'7" x 9'3"  |
| BEDROOM 2   | 3.45m x 2.75m   | 11'4" x 9'0"  |
| BALCONY     | 3m <sup>2</sup> | 30 sq ft      |



VIEWS WEST



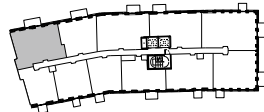
TWO BEDROOM APARTMENT



|           |     |
|-----------|-----|
| APARTMENT | 135 |
| FLOOR     | 04  |



EAST ELEVATION



FLOORPLATE

|             |                 |               |
|-------------|-----------------|---------------|
| LIVING ROOM | 5.52m x 4.56m   | 18'1" x 15'0" |
| KITCHEN     | 2.65m x 4.38m   | 8'8" x 14'4"  |
| BEDROOM 1   | 3.00m x 2.90m   | 9'10" x 9'6"  |
| BEDROOM 2   | 3.35m x 2.75m   | 11'0" x 9'0"  |
| BALCONY     | 6m <sup>2</sup> | 62 sq ft      |



VIEWS EAST OVER GAUGING SQUARE



KEY

|  |                         |  |   |  |  |  |  |
|--|-------------------------|--|---|--|--|--|--|
|  | WiFi Router and Sky box |  | Double Socket                                 |  | Kitchen / utility appliance below worktop  |  | 46" LED / HD TV mounted 1.4m from floor with 13A socket and cable duct to Sky+HD, TV / FM, BT and 2 x 13A double sockets below |
|  | Door entry system       |  | TV / FM, 2 x 13A double sockets and RF return |  | External Floor Light                       |  | TV mounting point 1.4m from floor with 13A socket and cable duct to Sky+HD, TV / FM, BT and 2 x 13A double sockets below       |
|  | BT / Home Network point |  | Hot Water Cylinder                            |  | Feature Downlight                          |  | Cupboard   |
|  | Single Socket           |  | Tall Kitchen unit                             |  | Recessed Downlight                         |  | Wardrobe   |
|  | USB Socket              |  | Fridge / Freezer                              |  | Heated wall with towel rail and robe hooks |  |  |

Floorplans shown for London Dock are for approximate measurements only. Exact layouts and sizes may vary. All measurements may vary within a tolerance of 5%. The dimensions are not intended to be used for carpet sizes, appliance sizes or items of furniture. Floorplate relates to lowest level apartment of that type.



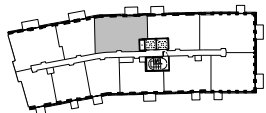
TWO BEDROOM APARTMENT



|           |     |     |
|-----------|-----|-----|
| APARTMENT | 137 | 148 |
| FLOOR     | 04  | 05  |



EAST ELEVATION



FLOORPLATE

|             |                 |               |
|-------------|-----------------|---------------|
| LIVING ROOM | 4.97m x 5.15m   | 16'3" x 17'0" |
| KITCHEN     | 2.75m x 2.81m   | 9'0" x 9'2"   |
| BEDROOM 1   | 4.65m x 3.26m   | 15'3" x 10'8" |
| BEDROOM 2   | 3.45m x 2.75m   | 11'4" x 9'0"  |
| BALCONY     | 4m <sup>2</sup> | 48 sq ft      |



VIEWS EAST OVER GAUGING SQUARE



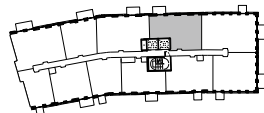
TWO BEDROOM APARTMENT



|           |     |
|-----------|-----|
| APARTMENT | 138 |
| FLOOR     | 05  |



EAST ELEVATION



FLOORPLATE

|             |                 |              |
|-------------|-----------------|--------------|
| LIVING ROOM | 4.97m x 2.88m   | 16'3" x 9'6" |
| KITCHEN     | 4.97m x 2.65m   | 16'3" x 8'8" |
| BEDROOM 1   | 4.65m x 2.80m   | 15'3" x 9'2" |
| BEDROOM 2   | 3.45m x 2.75m   | 11'4" x 9'0" |
| BALCONY     | 4m <sup>2</sup> | 48 sq ft     |



VIEWS EAST OVER GAUGING SQUARE



KEY

|  |                         |  |   |  |  |  |  |
|--|-------------------------|--|---|--|--|--|--|
|  | WiFi Router and Sky box |  | Double Socket                                 |  | Kitchen / utility appliance below worktop  |  | 46" LED / HD TV mounted 1.4m from floor with 13A socket and cable duct to Sky+HD, TV / FM, BT and 2 x 13A double sockets below |
|  | Door entry system       |  | TV / FM, 2 x 13A double sockets and RF return |  | External Floor Light                       |  | TV mounting point 1.4m from floor with 13A socket and cable duct to Sky+HD, TV / FM, BT and 2 x 13A double sockets below       |
|  | BT / Home Network point |  | Hot Water Cylinder                            |  | Feature Downlight                          |  | Cupboard   |
|  | Single Socket           |  | Tall Kitchen unit                             |  | Recessed Downlight                         |  | Wardrobe   |
|  | USB Socket              |  | Fridge / Freezer                              |  | Heated wall with towel rail and robe hooks |  |  |

Floorplans shown for London Dock are for approximate measurements only. Exact layouts and sizes may vary. All measurements may vary within a tolerance of 5%. The dimensions are not intended to be used for carpet sizes, appliance sizes or items of furniture. Floorplate relates to lowest level apartment of that type.

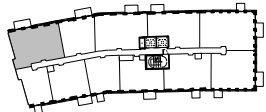
TWO BEDROOM APARTMENT



|           |     |
|-----------|-----|
| APARTMENT | 146 |
| FLOOR     | 05  |



EAST ELEVATION



FLOORPLATE

|             |                 |               |
|-------------|-----------------|---------------|
| LIVING ROOM | 5.51m x 5.17m   | 18'1" x 17'0" |
| KITCHEN     | 2.65m x 4.20m   | 8'8" x 13'9"  |
| BEDROOM 1   | 4.56m x 2.90m   | 15'0" x 9'6"  |
| BEDROOM 2   | 3.35m x 2.75m   | 11'0" x 9'0"  |
| BALCONY     | 6m <sup>2</sup> | 62 sq ft      |



VIEWS EAST OVER GAUGING SQUARE



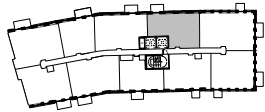
TWO BEDROOM APARTMENT



|           |     |
|-----------|-----|
| APARTMENT | 149 |
| FLOOR     | 06  |



EAST ELEVATION



FLOORPLATE

|             |                 |              |
|-------------|-----------------|--------------|
| LIVING ROOM | 4.97m x 2.88m   | 16'3" x 9'6" |
| KITCHEN     | 4.97m x 2.65m   | 16'3" x 8'8" |
| BEDROOM 1   | 4.65m x 2.80m   | 15'3" x 9'2" |
| BEDROOM 2   | 3.45m x 2.75m   | 11'4" x 9'0" |
| BALCONY     | 4m <sup>2</sup> | 48 sq ft     |



VIEWS EAST OVER GAUGING SQUARE



KEY

|  |                         |  |   |  |  |  |  |
|--|-------------------------|--|---|--|--|--|--|
|  | WiFi Router and Sky box |  | Double Socket                                 |  | Kitchen / utility appliance below worktop  |  | 46" LED / HD TV mounted 1.4m from floor with 13A socket and cable duct to Sky+HD, TV / FM, BT and 2 x 13A double sockets below |
|  | Door entry system       |  | TV / FM, 2 x 13A double sockets and RF return |  | External Floor Light                       |  | TV mounting point 1.4m from floor with 13A socket and cable duct to Sky+HD, TV / FM, BT and 2 x 13A double sockets below       |
|  | BT / Home Network point |  | Hot Water Cylinder                            |  | Feature Downlight                          |  | Cupboard   |
|  | Single Socket           |  | Tall Kitchen unit                             |  | Recessed Downlight                         |  | Wardrobe   |
|  | USB Socket              |  | Fridge / Freezer                              |  | Heated wall with towel rail and robe hooks |  |  |

Floorplans shown for London Dock are for approximate measurements only. Exact layouts and sizes may vary. All measurements may vary within a tolerance of 5%. The dimensions are not intended to be used for carpet sizes, appliance sizes or items of furniture. Floorplate relates to lowest level apartment of that type.

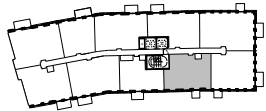
TWO BEDROOM APARTMENT



|           |     |
|-----------|-----|
| APARTMENT | 152 |
| FLOOR     | 06  |



WEST ELEVATION



FLOORPLATE

|             |                 |               |
|-------------|-----------------|---------------|
| LIVING ROOM | 3.86m x 4.38m   | 12'8" x 14'4" |
| KITCHEN     | 3.45m x 2.81m   | 11'4" x 9'3"  |
| BEDROOM 1   | 3.83m x 2.83m   | 12'7" x 9'3"  |
| BEDROOM 2   | 3.45m x 2.75m   | 11'4" x 9'0"  |
| BALCONY     | 3m <sup>2</sup> | 30 sq ft      |



VIEWS WEST



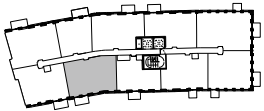
TWO BEDROOM APARTMENT



|           |     |     |
|-----------|-----|-----|
| APARTMENT | 154 | 163 |
| FLOOR     | 06  | 07  |



WEST ELEVATION



FLOORPLATE

|             |                 |               |
|-------------|-----------------|---------------|
| LIVING ROOM | 4.75m x 4.65m   | 15'7" x 15'3" |
| KITCHEN     | 2.65m x 3.17m   | 8'8" x 10'6"  |
| BEDROOM 1   | 5.27m x 3.25m   | 17'4" x 10'8" |
| BEDROOM 2   | 4.05m x 2.75m   | 13'3" x 9'0"  |
| BALCONY     | 5m <sup>2</sup> | 53 sq ft      |



VIEWS WEST



KEY

|  |                         |  |   |  |  |
|--|-------------------------|--|---|--|--|
|  | WiFi Router and Sky box |  | Double Socket                                 |  | Kitchen / utility appliance below worktop  |
|  | Door entry system       |  | TV / FM, 2 x 13A double sockets and RF return |  | External Floor Light   |
|  | BT / Home Network point |  | Hot Water Cylinder                            |  | Feature Downlight  |
|  | Single Socket           |  | Tall Kitchen unit                             |  | Recessed Downlight   |
|  | USB Socket              |  | Fridge / Freezer                              |  | Heated wall with towel rail and robe hooks   |
|  |                         |  |   |  | 46" LED / HD TV mounted 1.4m from floor with 13A socket and cable duct to Sky+HD, TV / FM, BT and 2 x 13A double sockets below |
|  |                         |  |   |  | TV mounting point 1.4m from floor with 13A socket and cable duct to Sky+HD, TV / FM, BT and 2 x 13A double sockets below       |
|  |                         |  |   |  | Cupboard   |
|  |                         |  |   |  | Wardrobe   |

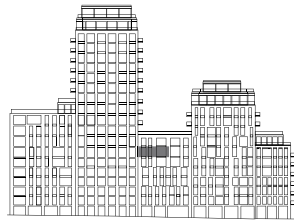
Floorplans shown for London Dock are for approximate measurements only. Exact layouts and sizes may vary. All measurements may vary within a tolerance of 5%. The dimensions are not intended to be used for carpet sizes, appliance sizes or items of furniture. Floorplate relates to lowest level apartment of that type.



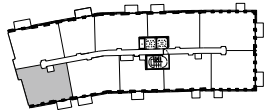
TWO BEDROOM APARTMENT



|           |     |
|-----------|-----|
| APARTMENT | 155 |
| FLOOR     | 06  |



WEST ELEVATION



FLOORPLATE

|             |                 |               |
|-------------|-----------------|---------------|
| LIVING ROOM | 4.35m x 4.14m   | 14'3" x 13'7" |
| KITCHEN     | 2.95m x 3.37m   | 9'8" x 11'1"  |
| BEDROOM 1   | 5.32m x 2.97m   | 17'6" x 9'9"  |
| BEDROOM 2   | 3.35m x 2.75m   | 11'0" x 9'0"  |
| BALCONY     | 5m <sup>2</sup> | 53 sq ft      |



VIEWS WEST



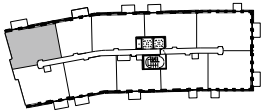
TWO BEDROOM APARTMENT



|           |     |     |
|-----------|-----|-----|
| APARTMENT | 156 | 165 |
| FLOOR     | 06  | 07  |



EAST ELEVATION



FLOORPLATE

|             |                 |               |
|-------------|-----------------|---------------|
| LIVING ROOM | 5.54m x 5.17m   | 18'2" x 17'0" |
| KITCHEN     | 2.65m x 4.20m   | 8'8" x 13'9"  |
| BEDROOM 1   | 4.56m x 2.90m   | 15'0" x 9'6"  |
| BEDROOM 2   | 3.35m x 2.75m   | 11'0" x 9'0"  |
| BALCONY     | 6m <sup>2</sup> | 62 sq ft      |



VIEWS EAST OVER GAUGING SQUARE



KEY

|  |                         |  |   |  |  |  |  |
|--|-------------------------|--|---|--|--|--|--|
|  | WiFi Router and Sky box |  | Double Socket                                 |  | Kitchen / utility appliance below worktop  |  | 46" LED / HD TV mounted 1.4m from floor with 13A socket and cable duct to Sky+HD, TV / FM, BT and 2 x 13A double sockets below |
|  | Door entry system       |  | TV / FM, 2 x 13A double sockets and RF return |  | External Floor Light                       |  | TV mounting point 1.4m from floor with 13A socket and cable duct to Sky+HD, TV / FM, BT and 2 x 13A double sockets below       |
|  | BT / Home Network point |  | Hot Water Cylinder                            |  | Feature Downlight                          |  | Cupboard   |
|  | Single Socket           |  | Tall Kitchen unit                             |  | Recessed Downlight                         |  | Wardrobe   |
|  | USB Socket              |  | Fridge / Freezer                              |  | Heated wall with towel rail and robe hooks |  |  |

Floorplans shown for London Dock are for approximate measurements only. Exact layouts and sizes may vary. All measurements may vary within a tolerance of 5%. The dimensions are not intended to be used for carpet sizes, appliance sizes or items of furniture. Floorplate relates to lowest level apartment of that type.

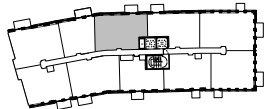
TWO BEDROOM APARTMENT



|           |     |
|-----------|-----|
| APARTMENT | 158 |
| FLOOR     | 06  |



EAST ELEVATION



FLOORPLATE

|             |                 |               |
|-------------|-----------------|---------------|
| LIVING ROOM | 4.97m x 5.17m   | 16'3" x 17'0" |
| KITCHEN     | 2.75m x 2.81m   | 9'0" x 9'2"   |
| BEDROOM 1   | 4.65m x 3.24m   | 15'3" x 10'7" |
| BEDROOM 2   | 3.45m x 2.75m   | 11'4" x 9'0"  |
| BALCONY     | 4m <sup>2</sup> | 48 sq ft      |



VIEWS EAST OVER GAUGING SQUARE



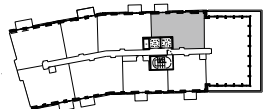
TWO BEDROOM APARTMENT



|           |     |
|-----------|-----|
| APARTMENT | 159 |
| FLOOR     | 07  |



EAST ELEVATION



FLOORPLATE

|             |                 |              |
|-------------|-----------------|--------------|
| LIVING ROOM | 4.97m x 2.88m   | 16'3" x 9'6" |
| KITCHEN     | 4.97m x 2.65m   | 16'3" x 8'8" |
| BEDROOM 1   | 4.65m x 2.80m   | 15'3" x 9'2" |
| BEDROOM 2   | 3.45m x 2.75m   | 11'4" x 9'0" |
| BALCONY     | 4m <sup>2</sup> | 48 sq ft     |



VIEWS EAST OVER GAUGING SQUARE



KEY

|  |                         |  |   |  |  |  |  |
|--|-------------------------|--|---|--|--|--|--|
|  | WiFi Router and Sky box |  | Double Socket                                 |  | Kitchen / utility appliance below worktop  |  | 46" LED / HD TV mounted 1.4m from floor with 13A socket and cable duct to Sky+HD, TV / FM, BT and 2 x 13A double sockets below |
|  | Door entry system       |  | TV / FM, 2 x 13A double sockets and RF return |  | External Floor Light                       |  | TV mounting point 1.4m from floor with 13A socket and cable duct to Sky+HD, TV / FM, BT and 2 x 13A double sockets below       |
|  | BT / Home Network point |  | Hot Water Cylinder                            |  | Feature Downlight                          |  | Cupboard   |
|  | Single Socket           |  | Tall Kitchen unit                             |  | Recessed Downlight                         |  | Wardrobe   |
|  | USB Socket              |  | Fridge / Freezer                              |  | Heated wall with towel rail and robe hooks |  |  |

Floorplans shown for London Dock are for approximate measurements only. Exact layouts and sizes may vary. All measurements may vary within a tolerance of 5%. The dimensions are not intended to be used for carpet sizes, appliance sizes or items of furniture. Floorplate relates to lowest level apartment of that type.

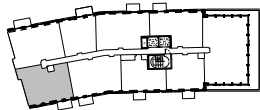
TWO BEDROOM APARTMENT



|           |     |
|-----------|-----|
| APARTMENT | 164 |
| FLOOR     | 07  |



WEST ELEVATION



FLOORPLATE

|             |                 |               |
|-------------|-----------------|---------------|
| LIVING ROOM | 4.35m x 4.14m   | 14'3" x 13'7" |
| KITCHEN     | 2.95m x 3.37m   | 9'8" x 11'1"  |
| BEDROOM 1   | 5.32m x 2.97m   | 17'6" x 9'9"  |
| BEDROOM 2   | 3.35m x 2.75m   | 11'0" x 9'0"  |
| BALCONY     | 5m <sup>2</sup> | 53 sq ft      |



VIEWS WEST



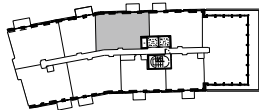
TWO BEDROOM APARTMENT



|           |     |
|-----------|-----|
| APARTMENT | 167 |
| FLOOR     | 07  |



EAST ELEVATION



FLOORPLATE

|             |                 |               |
|-------------|-----------------|---------------|
| LIVING ROOM | 4.97m x 5.17m   | 16'3" x 17'0" |
| KITCHEN     | 2.75m x 2.81m   | 9'0" x 9'2"   |
| BEDROOM 1   | 4.65m x 3.24m   | 15'3" x 10'7" |
| BEDROOM 2   | 3.45m x 2.75m   | 11'4" x 9'0"  |
| BALCONY     | 4m <sup>2</sup> | 48 sq ft      |



VIEWS EAST OVER GAUGING SQUARE



KEY

|  |                         |  |   |  |  |  |  |
|--|-------------------------|--|---|--|--|--|--|
|  | WiFi Router and Sky box |  | Double Socket                                 |  | Kitchen / utility appliance below worktop  |  | 46" LED / HD TV mounted 1.4m from floor with 13A socket and cable duct to Sky+HD, TV / FM, BT and 2 x 13A double sockets below |
|  | Door entry system       |  | TV / FM, 2 x 13A double sockets and RF return |  | External Floor Light                       |  | TV mounting point 1.4m from floor with 13A socket and cable duct to Sky+HD, TV / FM, BT and 2 x 13A double sockets below       |
|  | BT / Home Network point |  | Hot Water Cylinder                            |  | Feature Downlight                          |  | Cupboard   |
|  | Single Socket           |  | Tall Kitchen unit                             |  | Recessed Downlight                         |  | Wardrobe   |
|  | USB Socket              |  | Fridge / Freezer                              |  | Heated wall with towel rail and robe hooks |  |  |

Floorplans shown for London Dock are for approximate measurements only. Exact layouts and sizes may vary. All measurements may vary within a tolerance of 5%. The dimensions are not intended to be used for carpet sizes, appliance sizes or items of furniture. Floorplate relates to lowest level apartment of that type.





Computer-generated images are indicative only

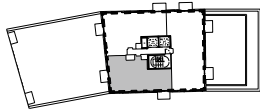
TWO BEDROOM PREMIER APARTMENT



|           |     |     |
|-----------|-----|-----|
| APARTMENT | 171 | 174 |
| FLOOR     | 09  | 10  |



WEST ELEVATION



FLOORPLATE

|             |                 |               |
|-------------|-----------------|---------------|
| LIVING ROOM | 4.48m x 4.58m   | 14'8" x 15'0" |
| KITCHEN     | 4.48m x 2.85m   | 14'8" x 9'4"  |
| BEDROOM 1   | 4.39m x 2.90m   | 14'6" x 9'6"  |
| BEDROOM 2   | 3.25m x 2.75m   | 10'8" x 9'0"  |
| BALCONIES   | 8m <sup>2</sup> | 86 sq ft      |



VIEWS NORTH



VIEWS WEST

KEY

- Door entry system
- BT / Home Network point
- Heated wall with Towel Rail and robe hooks
- Pop-Up Socket
- Pop-Up Socket with USB
- Single Socket
- USB Socket
- External tap
- WiFi Router and Sky box
- Double Socket
- External Double Socket
- Floor Sockets
- TV / FM, 2 x 13A double sockets and RF return
- Hot Water Cylinder
- Tall Kitchen unit
- Fridge / Freezer
- Kitchen / utility appliance below worktop
- External Floor Light
- Feature Downlight
- Recessed Downlight
- Kitchen Feature Pendant
- Speaker
- Provision for pendant light fitting
- 55" LED / HD TV mounted 1.4m from floor with 13A socket and cable duct to Sky+HD, TV / FM, BT and 2 x 13A double sockets below
- TV mounting point 1.4m from floor with 13A socket and cable duct to Sky+HD, TV / FM, BT and 2 x 13A double sockets below
- Cupboard
- Wardrobe

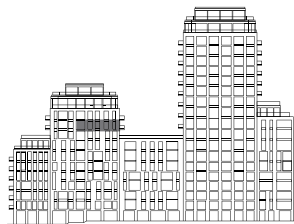
Floorplans shown for London Dock are for approximate measurements only. Exact layouts and sizes may vary. All measurements may vary within a tolerance of 5%. The dimensions are not intended to be used for carpet sizes, appliance sizes or items of furniture. Floorplate relates to lowest level apartment of that type.



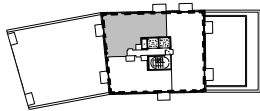
TWO BEDROOM PREMIER APARTMENT



|           |     |
|-----------|-----|
| APARTMENT | 172 |
| FLOOR     | 09  |



EAST ELEVATION



FLOORPLATE

VIEWS EAST OVER GAUGING SQUARE

|             |                 |                |
|-------------|-----------------|----------------|
| LIVING ROOM | 6.30m x 4.84m   | 20'8" x 15'10" |
| KITCHEN     | 2.76m x 4.10m   | 9'1" x 13'6"   |
| BEDROOM 1   | 3.18m x 3.08m   | 10'6" x 10'1"  |
| BEDROOM 2   | 3.23m x 2.75m   | 10'7" x 9'0"   |
| BALCONIES   | 8m <sup>2</sup> | 90 sq ft       |

VIEWS NORTH



KEY

- Door entry system
- BT / Home Network point
- Heated wall with Towel Rail and robe hooks
- Pop-Up Socket
- Pop-Up Socket with USB
- Single Socket
- USB Socket
- External tap
- WiFi Router and Sky box
- Double Socket
- External Double Socket
- Floor Sockets
- TV / FM, 2 x 13A double sockets and RF return
- Hot Water Cylinder
- Tall Kitchen unit
- Fridge / Freezer
- Kitchen / utility appliance below worktop
- External Floor Light
- Feature Downlight
- Recessed Downlight
- Kitchen Feature Pendant
- Speaker
- Provision for pendant light fitting
- 55" LED / HD TV mounted 1.4m from floor with 13A socket and cable duct to Sky+HD, TV / FM, BT and 2 x 13A double sockets below
- TV mounting point 1.4m from floor with 13A socket and cable duct to Sky+HD, TV / FM, BT and 2 x 13A double sockets below
- Cupboard
- Wardrobe

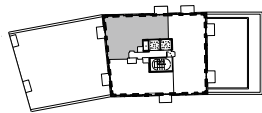
Floorplans shown for London Dock are for approximate measurements only. Exact layouts and sizes may vary. All measurements may vary within a tolerance of 5%. The dimensions are not intended to be used for carpet sizes, appliance sizes or items of furniture. Floorplate relates to lowest level apartment of that type.



TWO BEDROOM PREMIER APARTMENT



EAST ELEVATION



FLOORPLATE

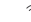


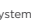
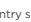



VIEWS EAST OVER GAUGING SQUARE

VIEWS NORTH



|             |                 |                |
|-------------|-----------------|----------------|
| LIVING ROOM | 6.30m x 4.84m   | 20'8" x 15'10" |
| KITCHEN     | 2.76m x 4.10m   | 9'1" x 13'6"   |
| BEDROOM 1   | 3.18m x 3.08m   | 10'6" x 10'1"  |
| BEDROOM 2   | 3.23m x 2.75m   | 10'7" x 9'0"   |
| BALCONIES   | 8m <sup>2</sup> | 90 sq ft       |

KEY

- 

Door entry system

BT / Home Network point

Heated wall with Towel Rail and robe hooks



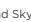
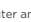

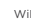

Pop-Up Socket

Pop-Up Socket with USB

Single Socket

USB Socket

External tap



WiFi Router and Sky box

Double Socket



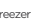




External Double Socket

Floor Sockets

TV / FM, 2 x 13A double sockets and RF return

Hot Water Cylinder

Tall Kitchen unit



Fridge / Freezer

Kitchen / utility appliance below worktop






External Floor Light

Feature Downlight

Recessed Downlight

Kitchen Feature Pendant

Speaker



Provision for pendant light fitting

55" LED / HD TV mounted 1.4m from floor with 13A socket and cable duct to Sky+HD, TV / FM, BT and 2 x 13A double sockets below

TV mounting point 1.4m from floor with 13A socket and cable duct to Sky+HD, TV / FM, BT and 2 x 13A double sockets below

Cupboard

Wardrobe

Floorplans shown for London Dock are for approximate measurements only. Exact layouts and sizes may vary. All measurements may vary within a tolerance of 5%. The dimensions are not intended to be used for carpet sizes, appliance sizes or items of furniture. Floorplate relates to lowest level apartment of that type.

FLOORPLANS

ALEXANDER WHARF

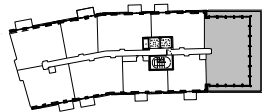
85

LONDON DOCK E1

THREE BEDROOM PREMIER APARTMENT



EAST ELEVATION



FLOORPLATE



|           |     |
|-----------|-----|
| APARTMENT | 160 |
| FLOOR     | 07  |

|             |                  |                |
|-------------|------------------|----------------|
| LIVING ROOM | 4.78m x 6.65m    | 15'8" x 21'10" |
| KITCHEN     | 4.57m x 2.85m    | 15'0" x 9'4"   |
| BEDROOM 1   | 4.27m x 3.40m    | 14'0" x 11'2"  |
| BEDROOM 2   | 3.41m x 3.61m    | 11'2" x 11'10" |
| BEDROOM 3   | 3.11m x 3.79m    | 10'2" x 12'6"  |
| TERRACE     | 52m <sup>2</sup> | 556 sq ft      |



VIEWS WEST



VIEWS EAST OVER GAUGING SQUARE

VIEWS SOUTH



KEY

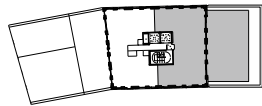
- Door entry system
- BT / Home Network point
- Heated wall with Towel Rail and robe hooks
- Pop-Up Socket
- Pop-Up Socket with USB
- Single Socket
- USB Socket
- External tap
- WiFi Router and Sky box
- Double Socket
- External Double Socket
- Floor Sockets
- TV / FM, 2 x 13A double sockets and RF return
- Hot Water Cylinder
- Tall Kitchen unit
- Fridge / Freezer
- Kitchen / utility appliance below worktop
- External Floor Light
- Feature Downlight
- Recessed Downlight
- Kitchen Feature Pendant
- Speaker
- Provision for pendant light fitting
- 55" LED / HD TV mounted 1.4m from floor with 13A socket and cable duct to Sky+HD, TV / FM, BT and 2 x 13A double sockets below
- TV mounting point 1.4m from floor with 13A socket and cable duct to Sky+HD, TV / FM, BT and 2 x 13A double sockets below
- Cupboard
- Wardrobe

Floorplans shown for London Dock are for approximate measurements only. Exact layouts and sizes may vary. All measurements may vary within a tolerance of 5%. The dimensions are not intended to be used for carpet sizes, appliance sizes or items of furniture. Floorplate relates to lowest level apartment of that type.

THREE BEDROOM PREMIER APARTMENT



EAST ELEVATION

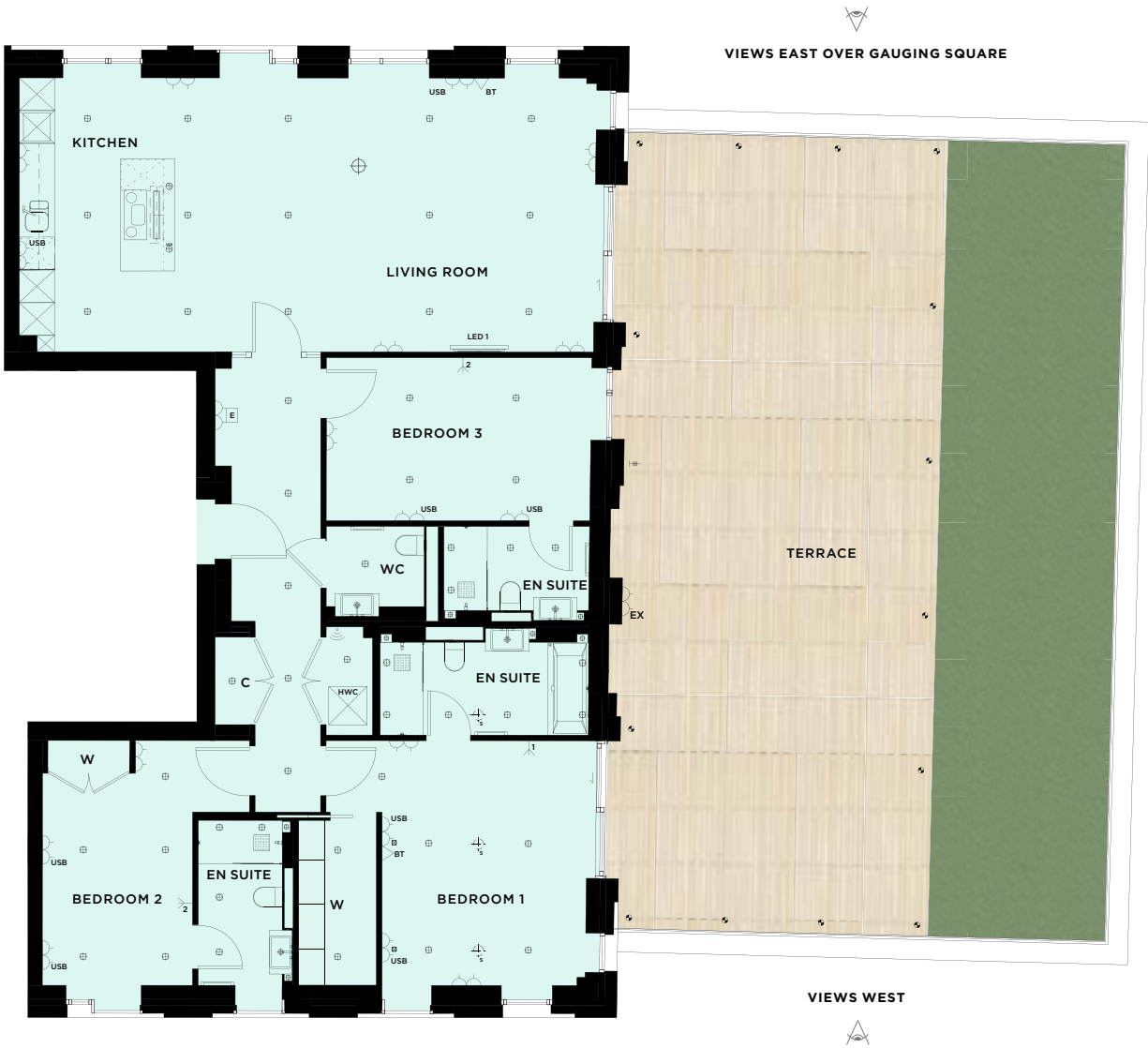


FLOORPLATE



|           |     |
|-----------|-----|
| APARTMENT | 168 |
| FLOOR     | 08  |

|             |                   |               |
|-------------|-------------------|---------------|
| LIVING ROOM | 5.02m x 7.72m     | 16'6" x 25'4" |
| KITCHEN     | 5.02m x 2.85m     | 16'6" x 9'4"  |
| BEDROOM 1   | 4.48m x 3.72m     | 14'8" x 12'2" |
| BEDROOM 2   | 4.48m x 2.75m     | 14'8" x 9'0"  |
| BEDROOM 3   | 2.99m x 4.86m     | 9'10" x 16'0" |
| TERRACE     | 129m <sup>2</sup> | 1383 sq ft    |



KEY

- Door entry system

BT / Home Network point

Heated wall with Towel Rail and robe hooks

Pop-Up Socket

Pop-Up Socket with USB

Single Socket

USB Socket

External tap
- WiFi Router and Sky box

Double Socket

External Double Socket

Floor Sockets

TV / FM, 2 x 13A double sockets and RF return

Hot Water Cylinder

Tall Kitchen unit
- Fridge / Freezer

Kitchen / utility appliance below worktop

External Floor Light

Feature Downlight

Recessed Downlight

Kitchen Feature Pendant

Speaker
- Provision for pendant light fitting

55" LED / HD TV mounted 1.4m from floor with 13A socket and cable duct to Sky+HD, TV / FM, BT and 2 x 13A double sockets below

TV mounting point 1.4m from floor with 13A socket and cable duct to Sky+HD, TV / FM, BT and 2 x 13A double sockets below

Cupboard

Wardrobe

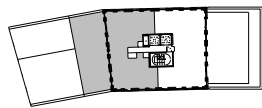
Floorplans shown for London Dock are for approximate measurements only. Exact layouts and sizes may vary. All measurements may vary within a tolerance of 5%. The dimensions are not intended to be used for carpet sizes, appliance sizes or items of furniture. Floorplate relates to lowest level apartment of that type.



THREE BEDROOM PREMIER APARTMENT



EAST ELEVATION



FLOORPLATE

VIEWS EAST OVER GAUGING SQUARE



VIEWS WEST

KEY

- Door entry system
- BT / Home Network point
- Heated wall with Towel Rail and robe hooks
- Pop-Up Socket
- Pop-Up Socket with USB
- Single Socket
- USB Socket
- External tap
- WiFi Router and Sky box
- Double Socket
- External Double Socket
- Floor Sockets
- TV / FM, 2 x 13A double sockets and RF return
- Hot Water Cylinder
- Tall Kitchen unit
- Fridge / Freezer
- Kitchen / utility appliance below worktop
- External Floor Light
- Feature Downlight
- Recessed Downlight
- Kitchen Feature Pendant
- Speaker
- Provision for pendant light fitting
- 55" LED / HD TV mounted 1.4m from floor with 13A socket and cable duct to Sky+HD, TV / FM, BT and 2 x 13A double sockets below
- TV mounting point 1.4m from floor with 13A socket and cable duct to Sky+HD, TV / FM, BT and 2 x 13A double sockets below
- Cupboard
- Wardrobe

|           |     |
|-----------|-----|
| APARTMENT | 169 |
| FLOOR     | 08  |

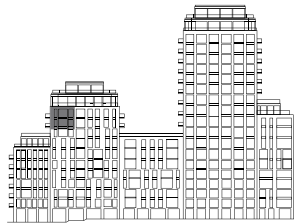
|             |                   |               |
|-------------|-------------------|---------------|
| LIVING ROOM | 5.03m x 7.71m     | 16'6" x 25'3" |
| KITCHEN     | 5.02m x 2.85m     | 16'6" x 9'4"  |
| BEDROOM 1   | 3.00m x 4.75m     | 9'10" x 15'7" |
| BEDROOM 2   | 3.88m x 3.20m     | 12'9" x 10'6" |
| BEDROOM 3   | 2.95m x 2.98m     | 9'8" x 9'9"   |
| TERRACE     | 151m <sup>2</sup> | 1628 sq ft    |

Floorplans shown for London Dock are for approximate measurements only. Exact layouts and sizes may vary. All measurements may vary within a tolerance of 5%. The dimensions are not intended to be used for carpet sizes, appliance sizes or items of furniture. Floorplate relates to lowest level apartment of that type.

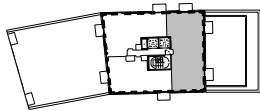
THREE BEDROOM PREMIER APARTMENT



|           |     |     |
|-----------|-----|-----|
| APARTMENT | 170 | 173 |
| FLOOR     | 09  | 10  |



EAST ELEVATION



FLOORPLATE

|             |                  |               |
|-------------|------------------|---------------|
| LIVING ROOM | 6.20m x 4.68m    | 20'4" x 15'4" |
| KITCHEN     | 4.57m x 2.85m    | 15'0" x 9'4"  |
| BEDROOM 1   | 4.70m x 3.85m    | 15'6" x 12'8" |
| BEDROOM 2   | 3.25m x 2.75m    | 10'8" x 9'0"  |
| BEDROOM 3   | 2.75m x 3.64m    | 9'0" x 12'0"  |
| BALCONIES   | 13m <sup>2</sup> | 138 sq ft     |



KEY

|  |  |  |   |  |   |  |  |
|--|--|--|---|--|---|--|--|
|  | Door entry system                          |  | WiFi Router and Sky box                       |  | Fridge / Freezer                          |  | Provision for pendant light fitting  |
|  | BT / Home Network point                    |  | Double Socket                                 |  | Kitchen / utility appliance below worktop |  | 55" LED / HD TV mounted 1.4m from floor with 13A socket and cable duct to Sky+HD, TV / FM, BT and 2 x 13A double sockets below |
|  | Heated wall with Towel Rail and robe hooks |  | External Double Socket                        |  | External Floor Light                      |  | TV mounting point 1.4m from floor with 13A socket and cable duct to Sky+HD, TV / FM, BT and 2 x 13A double sockets below       |
|  | Pop-Up Socket                              |  | Floor Sockets                                 |  | Feature Downlight                         |  | Cupboard   |
|  | Pop-Up Socket with USB                     |  | TV / FM, 2 x 13A double sockets and RF return |  | Recessed Downlight                        |  | Wardrobe   |
|  | Single Socket                              |  | Hot Water Cylinder                            |  | Kitchen Feature Pendant                   |  |  |
|  | USB Socket                                 |  | Tall Kitchen unit                             |  | Speaker                                   |  |  |
|  | External tap                               |  |   |  |   |  |  |

Floorplans shown for London Dock are for approximate measurements only. Exact layouts and sizes may vary. All measurements may vary within a tolerance of 5%. The dimensions are not intended to be used for carpet sizes, appliance sizes or items of furniture. Floorplate relates to lowest level apartment of that type.

## SPECIFICATION MANHATTAN, ONE AND TWO BEDROOM APARTMENTS

### GENERAL SPECIFICATION

- Air conditioning to Living Room and Bedrooms<sup>1</sup>
- Balconies / Terraces to all apartments
- Full height entrance door
- Brushed stainless steel ironmongery
- Aluminium powder coated double glazed external patio doors and windows
- Engineered timber flooring to Living Room, Kitchen and Hallway
- Carpet to Bedrooms
- Cupboard with integrated storage, coats rail and washer / dryer<sup>2</sup>
- Bespoke wardrobe with stitched faux leather internal detail to Master Bedroom in Manhattan, 1 and 2 Bedroom Apartments
- Ten year warranty from date of legal completion
- 2 year St George warranty
- 999 year lease from 4th July 1989

Computer-generated images are indicative only



### KITCHEN

- Bespoke fitted Kitchens with pan drawers and corner carousel<sup>2</sup>
- Composite stone Kitchen worktop and splashback
- Stainless steel 1 ½ bowl recessed sink with waste disposal
- Integrated Siemens fan assisted electric oven, induction hob and extractor fan
- Integrated Siemens microwave
- Integrated Siemens dishwasher
- Integrated Siemens full height fridge/freezer
- Integrated wine cooler
- Feature LED lighting above and below high level cupboards
- Concealed refuse and recycling facility

### BATHROOM

- Villeroy and Boch bath, WC and basin
- Heated wall panel with chrome robe hooks and towel rails
- Interior designed composite stone vanity unit
- Overhead chrome shower and hand shower to shower enclosure<sup>2</sup>
- Clear glass sliding shower screen<sup>2</sup>
- Wall mounted chrome taps
- Wall hung WC with soft closing toilet seat
- Demisting illuminated wall mirror
- Porcelain or ceramic wall and floor tiles
- Underfloor heating

### ELECTRICAL

- Wall mounted 46" LED / HD TV to Living Room
- Sky TV, line rental and broadband<sup>3</sup>
- Living Room and Master Bedroom Sky+ HD, IR receiver wired to Sky box located in Hallway Cupboard. ArabSat, NileSat and Hot Bird enabled<sup>4</sup>
- Master Bedroom wired for Sky multiroom
- TV point to remaining Bedrooms with return feed from the Living Room entertainment system
- Telephone points to Living Room and Master Bedroom
- Mood lighting control to Bathrooms
- Electronic dimmer control to Living Room and Master Bedroom
- External floor lighting to Balconies and Terraces
- USB charging points to Living Room, Kitchen and Bedrooms

Your attention is drawn to the fact that it may not be possible to provide the branded products as referred to in the specification. In such cases, a similar alternative will be provided. St George reserves the right to make these changes as required.

A number of choices and options are available to personalise your home. Choices and options are subject to timeframes, availability and change. Computer-generated images are indicative only.

1. The air conditioning system is designed to provide an ambient temperature within the apartment for the majority of external temperatures. This may not be achieved in extreme temperature conditions
2. Where applicable
3. 1 year pre-paid Sky Triple Play subscription to include Sky basic Entertainment Pack, Broadband Lite, Talk Weekends and Sky Rental. Sky+ HD box and router provided. Terms and conditions apply, please liaise with the Sales Consultants for further details
4. Subject to future connection by purchaser





## PREMIER SPECIFICATION TWO AND THREE BEDROOM APARTMENTS

### GENERAL SPECIFICATION

- Air conditioning to Living Room and Bedrooms<sup>1</sup>
- Balconies / Terraces to all apartments
- Full height doors throughout
- Antique bronze ironmongery
- Feature illuminated curtain recess
- Aluminium powder coated double glazed external patio doors and windows
- Engineered timber flooring to Living Room, Kitchen and Hallway
- Carpet to Bedrooms
- Cupboard with integrated storage, coats rail and washer / dryer<sup>2</sup>
- Bespoke wardrobe with stitched faux leather internal drawers to Master Bedroom in 2 Bedroom Apartments, and also to Bedroom 2 in 3 Bedroom Apartments
- Ten year warranty from date of legal completion
- 2 year St George warranty
- 999 year lease from 4th July 1989

Computer-generated images are indicative only



#### KITCHEN

- Bespoke fitted Kitchens with pan drawers, corner carousel and island unit<sup>2</sup>
- Marble Kitchen worktop and splashback<sup>3</sup>
- Stainless steel 1 ½ bowl recessed sink with waste disposal
- Instant hot water tap
- Integrated Miele fan assisted electric oven, steam oven and warming drawer
- Integrated Miele induction hob
- Integrated down draft extractor fan
- Integrated Miele Nespresso coffee machine
- Integrated Miele combination microwave
- Integrated Miele dishwasher
- Integrated Miele full height fridge/freezer
- Integrated Miele wine cooler
- Feature LED lighting below and above high level cupboards
- Concealed refuse and recycling facility

#### BATHROOMS

- Villeroy and Boch bath, WC and basin
- Heated wall panel with nickel robe hooks and towel rails
- Interior designed stone vanity unit<sup>3</sup>
- Overhead nickel rain shower and hand shower to shower enclosure
- Nickel hand shower set into bath
- Clear glass sliding shower screen<sup>2</sup>
- Wall mounted nickel taps
- Wall hung WC with soft closing toilet seat
- Demisting illuminated mirror
- Under floor heating

#### ELECTRICAL

- Integrated touch screen controlled audio visual, air conditioning, lighting and access control with visual link to concierge
- iPad to wirelessly control audio visual, air conditioning and lighting
- Integrated ceiling speakers to Master Bedroom and En Suite
- Telephone / Home Network points to Living Room and Master Bedroom
- Wall mounted 55" LED / HD TV with sound bar to Living Room
- Sky TV, line rental and broadband<sup>4</sup>
- Living Room and Master Bedroom Sky+ HD, IR receiver wired to Sky box located in Hallway Cupboard. ArabSat, NileSat and Hot Bird enabled<sup>5</sup>
- Additional TV point to Bedroom 2 and 3, with return feed from the Living Room entertainment system
- Mood lighting control to Living Room, Master Bedroom and Bathrooms, with dimmable lighting control to further Bedrooms

- Antique bronze high level sockets and switches
- White LED downlighters with feature inlay
- Pendant light fitting over Kitchen island unit
- External floor lighting to Balconies and Terraces<sup>2</sup>
- USB charging points to Living Room, Kitchen and Bedrooms
- Pre-wiring for pendant light to Living Room / Dining Room
- Feature lighting within window dressing reveal
- Pre-wiring for automated window dressing to Living Room and Master Bedroom

#### TERRACES

- Exterior designed Terrace, with decking, faux grass, plants and planters, lighting, external power and tap<sup>2</sup>





Computer-generated images are indicative only

# HOTEL-STYLE FACILITIES

London Dock offers the very best of capital living, combining architecture and design with premium hotel-style facilities. At its heart is The Club, a private residents' club, with an exceptional Health and Fitness Suite, complimented by a dedicated Concierge service and managed underground parking.

## RESIDENTS' FACILITIES

- Exclusive access to the Health and Fitness Suite with Swimming Pool, Sauna, Steam Room, Treatment Room, Gymnasium, Screening Room, Virtual Golf Suite and Squash Court<sup>6</sup>
- Landscaped courtyards, squares, promenade and water features
- Interior designed entrance lobbies, lifts and corridors

## TRANSPORT

- Car parking, motorcycle and cycle storage facility available in underground car park<sup>7</sup>
- Electric vehicle charging point<sup>7</sup>

## SECURITY

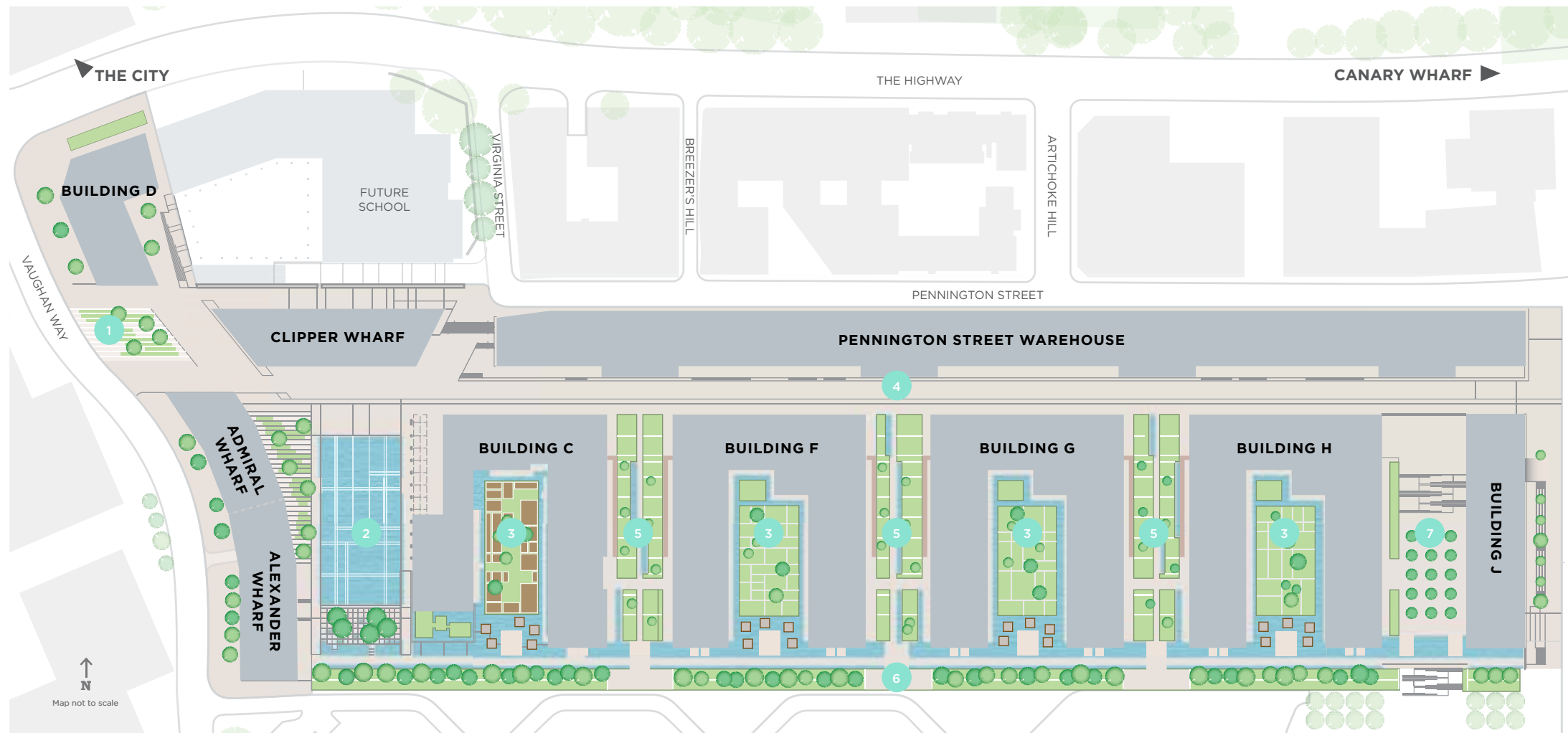
- Multi-point high security door locking system to entrance door with spy-hole
- 24 hour Concierge<sup>6</sup>
- CCTV security system to car park, Entrance Lobby and development<sup>6</sup>

Your attention is drawn to the fact that it may not be possible to provide the branded products as referred to in the specification. In such cases, a similar alternative will be provided. St George reserves the right to make these changes as required.

A number of choices and options are available to personalise your home. Choices and options are subject to timeframes, availability and change. Computer-generated images are indicative only.

1. The air conditioning system is designed to provide an ambient temperature within the apartment for the majority of external temperatures. This may not be achieved in extreme temperature conditions
2. Where applicable
3. Marble and stone are natural products and are therefore subject to natural variation
4. 1 year pre-paid Sky Triple Play subscription to include Sky basic

- Entertainment Pack, Broadband Lite, Talk Weekends and Sky Rental. Sky+ HD box and router provided. Terms and conditions apply, please liaise with the Sales Consultants for further details
5. Subject to future connection by purchaser
  6. Payable via the service charge. Phased in over the course of the development
  7. Subject to additional cost and availability



- 1 ARRIVAL SQUARE
- 2 GAUGING SQUARE
- 3 WATER GARDENS
- 4 QUAYSIDE
- 5 MARKET GARDENS
- 6 PROMENADE
- 7 MARKET SQUARE

## THE MASTERPLAN



ARRIVAL SQUARE



GAUGING SQUARE



ALEXANDER WHARF



ADMIRAL WHARF

St George and architects Patel Taylor, renowned for key London projects such as the Olympic Village, Putney Wharf and Greenwich Peninsula, have produced a new future for London Dock – apartments and penthouses, stunning landscaped open spaces, water gardens, leafy boulevards, shops, bars and restaurants.

The historic Pennington Street Warehouse will be restored, with plans to create a cultural centre and Gauging Square, at the heart of London Dock, will reflect the industrial scale of its past.





Computer-generated images are indicative only

# DESIGNED FOR LIFE

Buying a home is one of the most important decisions you will ever make. The qualities that make St George different mean that you can choose a new home from us with complete confidence. When you buy a home from St George you can be safe in the knowledge that it is built to very high standards of design and quality, has low environmental impact and that you will enjoy an exceptional customer experience.

### CUSTOMER SERVICE IS OUR PRIORITY

We place the highest priority on customer service and will manage the whole moving process for you. Our Customer Service teams will contact you shortly after you complete, to ensure that everything in your new home is absolutely to your liking. Our homes also benefit from a ten year warranty, the first two years of which are covered by St George.

### GREEN LIVING AND SUSTAINABLE DEVELOPMENT IS TOP OF OUR AGENDA

As a company, we are committed to reducing energy, water and waste on our construction sites, in our offices and in the homes that we build. Almost all of our developments are built on brownfield land and we always take care to protect and enhance biodiversity and natural habitats. Our homes include features to encourage sustainable living such as dual-flush WCs, recycling bins and energy efficient white goods.

### QUALITY IS AT THE HEART OF EVERYTHING WE DO

At St George, quality takes precedence, from choosing the right location and style of home, to the construction processes we practice, the materials we use and the specifications we put into our homes. For extra peace of mind, in addition to the 10 year warranty all new homes receive, St George operates a 2 year policy with dedicated Customer Service teams on hand 24 hours a day to deal with enquiries quickly and effectively.

### UNPARALLELED CHOICE OF HOMES IN THE MOST SOUGHT AFTER LOCATIONS

As one of the UK's leading house builders, we are able to offer our customers an unrivalled choice of property location, size and type. From city penthouses to country retreats, modern studio apartments to traditional family homes, you will find the perfect home to match your requirements. Our homes are also built in some of Britain's most desirable locations from market towns and rural villages to major towns and cities, and countryside to the coast – we build in the locations you want to live.

### A COMMITMENT TO CREATING SUSTAINABLE COMMUNITIES

St George's homes and developments are not just built for today. They are designed to enhance the neighbourhoods in which they are located permanently. We achieve this through our commitment to excellence in design, sensitive landscaping, sympathetic restoration, and impeccable standards of sustainability. We aim to address the needs not only of our customers but their neighbours and the broader community of which they are a part. It is a long-term view: we want to create exceptional places for people to live, work and relax in, and build communities that will thrive today and for years to come.



Proud to be members of the Berkeley Group of companies







# OUR VISION

Over the years the Berkeley Group has won many prestigious awards for the quality, design and sustainability of our developments. Our Vision strategy is designed to raise our standards higher still, and means that you are buying a home from a sustainable business that takes its responsibilities towards the environment, its workforce and the communities in which it works, very seriously.

Our Vision commitments:

AN EXCEPTIONAL CUSTOMER EXPERIENCE

Every customer benefits from our Berkeley Customer Satisfaction Commitment, with dedicated sales teams to provide exceptional service throughout the buying process, and Customer Service teams look after your needs after you have moved in.

GREENER, MORE ECONOMICAL HOMES

Our new homes are designed to use 26% less water and their CO<sub>2</sub> emissions are 76% lower than an average home\*, saving you significant amounts on your utility bills. We provide recycling bins in every home, space to set up a home office and a safe place to store bicycles.

CREATING SUSTAINABLE COMMUNITIES

We make sure the homes and places we create are safe and secure. Our homes are also adaptable to meet the changing needs of individuals and families. We reduce the impact of the construction process on the local community by ensuring all of our sites are registered with the Considerate Constructors Scheme.

A COMMITMENT TO THE FUTURE

We set targets to reduce water use and CO<sub>2</sub> emissions associated with our construction and business operations. We also aim to reuse or recycle a high proportion of our construction, demolition and excavation waste.

# THE BERKELEY FOUNDATION

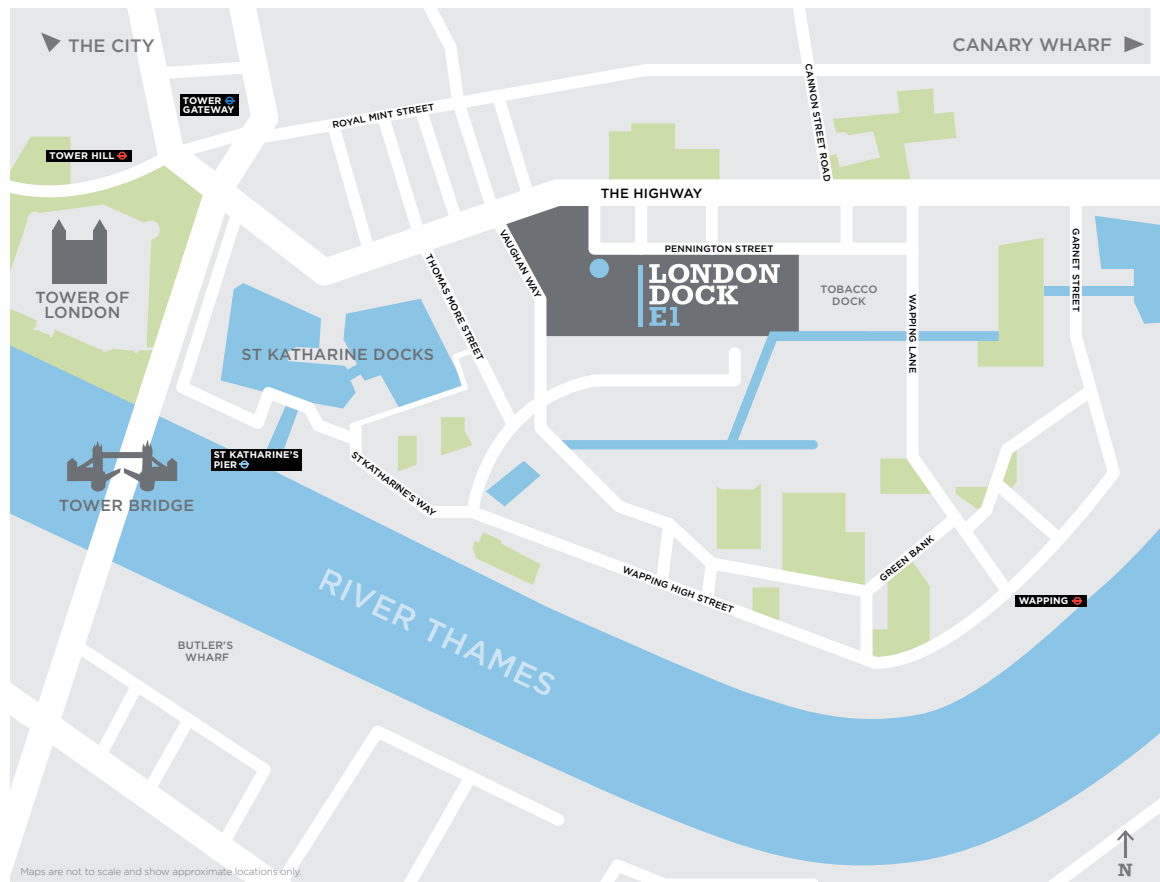
Berkeley takes social responsibility very seriously. In 2011 we set up The Berkeley Foundation, with the aim of supporting Britain's young people and their communities.

We do this through a number of partner charities that tackle some of the most pressing social problems affecting young people today, including homelessness and unemployment. The money raised comes part from the Berkeley Group, and also through the tireless and inventive efforts of our staff.

We have set a goal for The Berkeley Foundation to invest £10 million over the next five years to support young people and their communities. Every penny will be spent on charitable activities and worthy causes to ensure that maximum benefit is achieved.



\* Savings vary in every home. Figures based on a typical 3 bed Berkeley home achieving Code for Sustainable Homes Level 3. For further details contact: sustainability@berkeleygroup.co.uk  
Some features are only applicable to specific developments. Please ask sales negotiator for further information.



# CONTACT

## London Dock Show Apartments and Marketing Suite

Pennington Street, London E1W 2AD

### Opening hours

Monday – Friday 10am – 8pm

Saturday – Sunday 10am – 6pm

**Telephone** +44 (0)20 7971 7880

**Email** [enquiries@londondock.co.uk](mailto:enquiries@londondock.co.uk)

**Website** [www.londondock.co.uk](http://www.londondock.co.uk)

The information in this document is indicative and is intended to act as a guide only as to the finished product. Accordingly, due to St George policy of continuous improvement, the finished product may vary from the information provided. These particulars should not be relied upon as statements of fact or representations and applicants must satisfy themselves by inspection or otherwise as to their correctness. This information does not constitute a contract or warranty. The dimensions given on plans are subject to minor variations and are not intended to be used for carpet sizes, appliance sizes or items of furniture. London Dock is a marketing name and will not necessarily form part of the approved postal address. Applicants are advised to contact St George to ascertain the availability of any particular property. R331/30CA/0714



Proud to be a member of the  
Berkeley Group of companies



# LONDON DOCK E1

**Discover London Dock – a hidden treasure at the heart of the capital.**

London Dock is the most anticipated new development by leading London developer, St George. Situated just moments from Tower Bridge, the Tower of London, St Katharine Docks and the City, this exciting new destination offers a range of exclusive apartments and penthouses with hotel-style residents' facilities, as well as beautifully landscaped open spaces, shops, bars and restaurants.

**[www.londondock.co.uk](http://www.londondock.co.uk)**