



Stunning two  
bedroom houses  
just two miles  
from Didcot



# Greenwood Meadows

The Upton

Grove Road, Harwell,  
Oxfordshire OX11 0EE



Call **0300 330 0718**  
Visit **[sovereignliving.org.uk](http://sovereignliving.org.uk)**

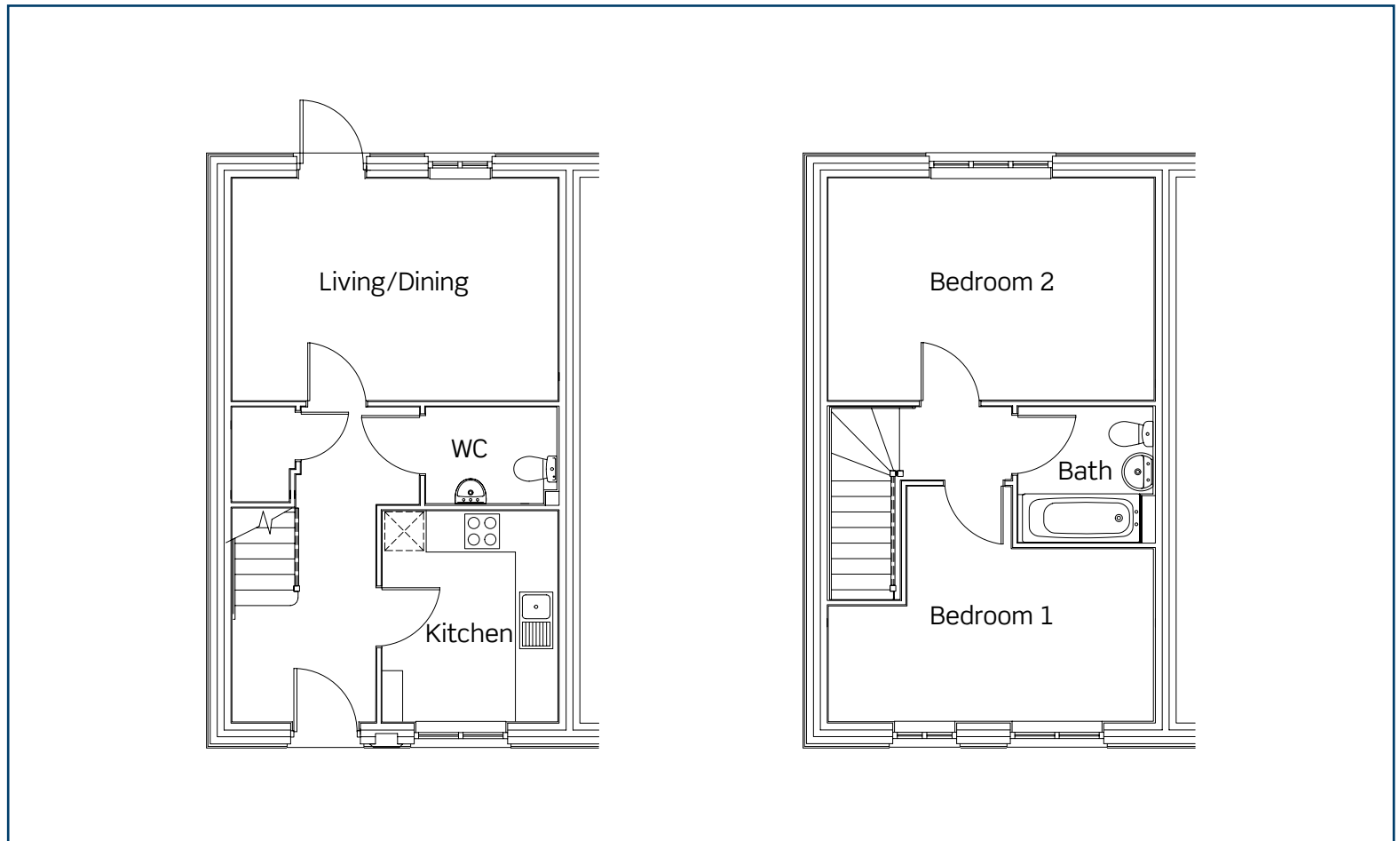
## Greenwood Meadows The Upton

Our new homes in Harwell are surrounded by charming rural villages, beautiful countryside and peaceful waterways, whilst also offering easy access to the A34, M4 and M40.

### Plots 34 & 61 - 65

All new homes come complete with:

- Fitted kitchen with oven, hob and extractor fan
- Spacious living area
- Ground floor cloakroom
- Allocated parking spaces





A stunning three bedroom house just two miles from Didcot



# Greenwood Meadows

## The Milton

Grove Road, Harwell,  
Oxfordshire OX11 0EE



Call **0300 330 0718**  
Visit **[sovereignliving.org.uk](https://www.sovereignliving.org.uk)**

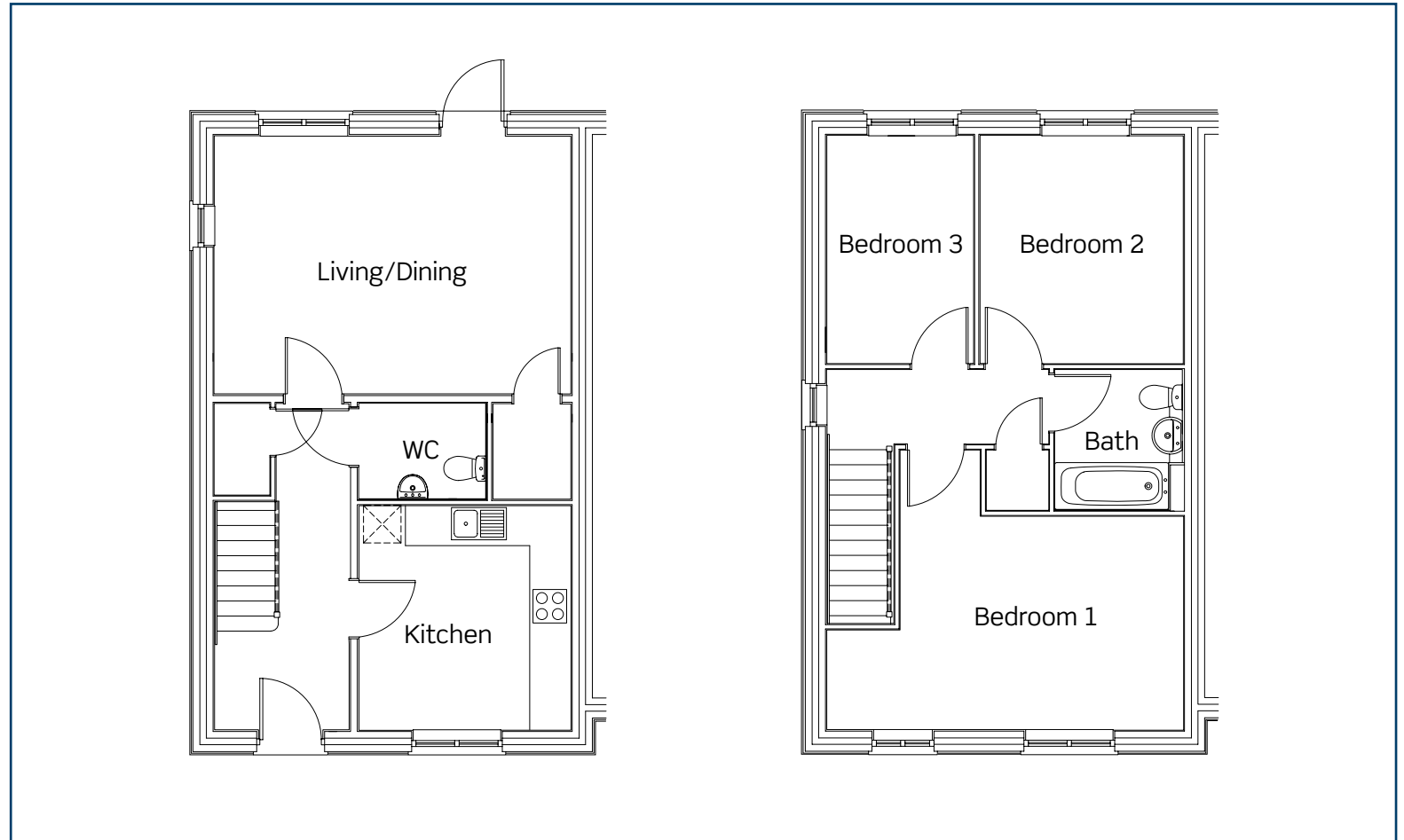
## Greenwood Meadows The Milton

Our new homes in Harwell are surrounded by charming rural villages, beautiful countryside and peaceful waterways, whilst also offering easy access to the A34, M4 and M40.

### Plot 35

All new homes come complete with:

- Fitted kitchen with oven, hob and extractor fan
- Spacious living area
- Ground floor cloakroom
- Allocated parking spaces



Greenwood  
Meadows  
Grove Road, Harwell,  
Oxfordshire OX11 0EE

Call **0300 330 0718**  
Visit **sovereignliving.org.uk**

 Plots 34 & 61 - 65  
The Upton  
2 bedroom house

 Plot 35  
The Milton  
3 bedroom house



Plot	Property details	Price	40% share	Monthly rent	Monthly service charge	Availability
34	The Upton Two bedroom mid-terrace house	£230,000	£92,000	£287.50	£30.62	Sept/Oct 2015
35	The Milton Three bedroom end-terrace house	£295,000	£118,000	£368.75	£30.62	Sept/Oct 2015

**Greenwood Meadows  
Harwell**

**0300 330 0718  
living@sovereign.org.uk**