



LATHERAM HOUSE

CHELTENHAM



LATHERAM HOUSE

Venturing towards the South West, our new development of homes for you to enjoy your retirement in are perfectly situated on the edge of the charming Cotswolds. Cheltenham is a town rich in history and culture. Built on mineral springs, its rise to fame began in the 18th Century where it soon became the holiday spa town to be seen in.

This rich history of health and wellbeing inspired the homes and community of Latheram House, putting great importance on natural light, green spaces and communal areas. Friends, neighbours and family can feel just as at home as our new homeowners.

We welcome you to enjoy your later living with us here in Cheltenham, a place to live, love and enjoy your retirement.

A handwritten signature in black ink, appearing to read 'M. Gill', positioned above the printed name.

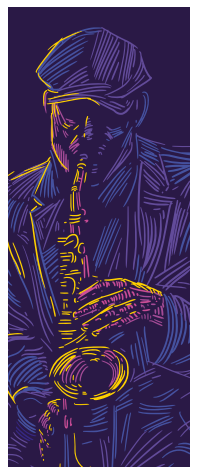
Mike Gill

Regional Managing Director



NATURAL HARMONY

The balance of urban life within one of England's Areas of Outstanding Natural Beauty creates a natural harmony in which to live. From long drives in the country and a spot of rambling, to shopping at John Lewis or enjoying a whisky in one of the many bars and restaurants. You have the best of both worlds on your doorstep.



CREATIVITY AND CULTURE

Cheltenham is home to a plethora of things to see and do.

Whether you like a traditional afternoon tea at the much loved Boston Tea Party Café, or your tastes are more adventurous and open to delving into Michelin star delights. Complete the evening by attending one of the many jazz, science or literary festivals that run throughout the year.

Aside from the pull of this cultural hub, you will have an impressive array of shops on your doorstep, both high street stores and independent boutiques. Discover numerous delicatessens offering a wide choice of artisan breads, meats and cheese, perfect for those intimate gatherings and cosy nights in.

For your day-to-day essentials, there's a pharmacy, bank, barber's and convenience store all within a short walk.

HERITAGE
AT HOME





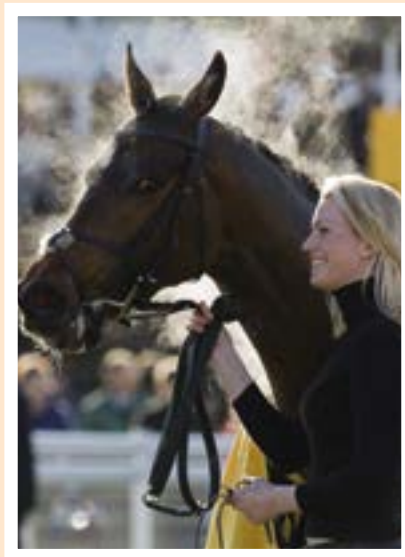
VINTAGE TRAVEL

Take a ride on the Gloucestershire Warwickshire
Railway where steam and heritage diesel trains
take magnificent journeys with wonderful views
of the nearby sleepy hamlets and villages,
with outstanding outlooks across to
the Malvern Hills and beyond.





HEART RACING



If you enjoy a day at the races, The Gold Cup is one of the most prestigious meets in the National Hunt calendar, which is held during the Cheltenham Festival every March. Prepare yourself for the crowd's famous Cheltenham roar as the tape is lifted on the first race of the season – it most certainly needs to be experienced first-hand.



DESIGNED
FOR LIVING

The concept behind Latheram House was to provide a symbiotic harmony of both traditional and modern homes that provides light, space and comfort. The external areas and landscaping have been carefully considered to provide a reflective and tranquil oasis nestled within the bustle of the surrounding urban environment.

Sallyanne George
DEVELOPMENT MANAGER



PERFECT FOR YOU

**A remarkable development of 67 apartments
and 2 cottages designed for social connection.**

Each home has been thoughtfully designed to complement their brick façades and stone detailing of nearby red architecture. The architects perfectly understood the needs of our customers, helping us to craft a considered environment that instantly becomes home.

A WARM WELCOME

Wellbeing is at the heart of the Pegasus philosophy. Latheram House has been expertly designed to nurture comfort, contentment and wellness.

Light-filled spacious living areas, materials and colours evoke calmness and tranquillity, while evenings feel cosy and warm.

With the knowledge that good social relationships are the foundation of wellbeing, we have designed Latheram House with community in mind.





COMMUNITY LIVING

Beyond the sanctuary of your own home is a range of shared amenities creating opportunities to make strong bonds.

The warm and relaxing shared lounge encourages owners to get together over a game, a cup of tea or a glass of wine. Owners also have access to a well-equipped social kitchen which allows the preparation of snacks, light meals and drinks. These can then be enjoyed in the light-filled lounge, or al fresco on the terrace where spirited surroundings invite great conversation.



THE INSIDE STORY

Every detail of the homes have been finished to the highest of standards, and we will help you make the space your own with our complimentary SmoothMove service.

When your home is full, the dedicated guest suite will be available to book for extra friends and family, so you can have everyone under the same roof.





LIVING SPACE

These bright and modern rooms are designed to maximise space whilst creating a homely and inviting environment. With glass doors opening out onto the balconies, you will always benefit from natural light.

BEDROOMS

The spacious bedrooms are bright and airy, with large windows that let in a surplus of natural light. Many of our master bedrooms come with built-in wardrobes for clutter-free storage.



KITCHEN

The contemporary kitchens are fitted with composite stone worktops and integrated appliances. With many apartments offering open plan living space.

BALCONIES

The balconies have painted steel handrails and composite decking. Many balconies overlook the beautiful gardens and courtyards, and are a perfect place to enjoy reading the daily newspaper.





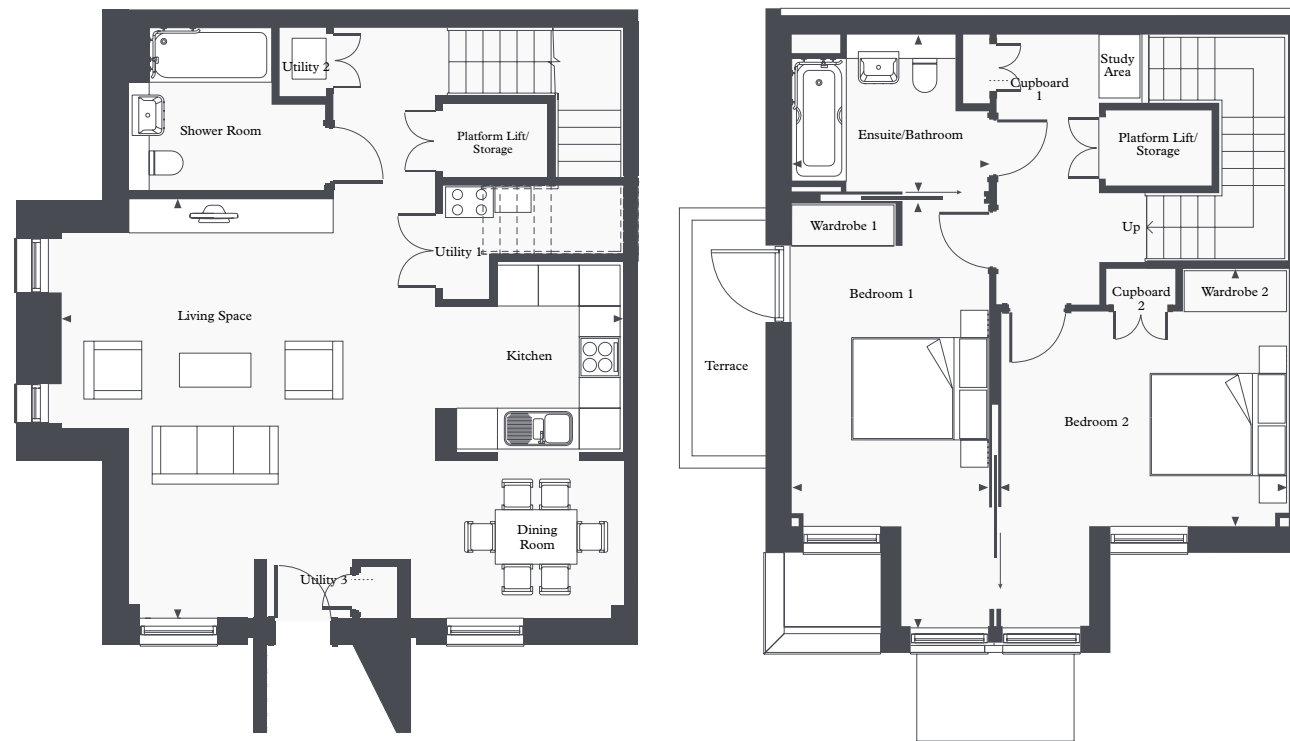
SHARING MOMENTS

We recognise wellbeing goes much further than a trip to the spa or going to the gym, it's about enjoying good company in a welcoming, convivial environment.

As well as its superb living spaces, life at Latheram House also offers access to outdoor spaces including a central courtyard complete with ponds and gardens.

It provides the perfect space for you to enjoy a leisurely stroll with neighbours or watch the grandchildren play, while you benefit from the fresh air.

TYPICAL
TWO BEDROOM
 COTTAGE



COTTAGE AREA - 1,335 SQ. FT - 124 SQ. M

**LIVING/KITCHEN/
 DINING**
 27ft 1in x 20ft 2in

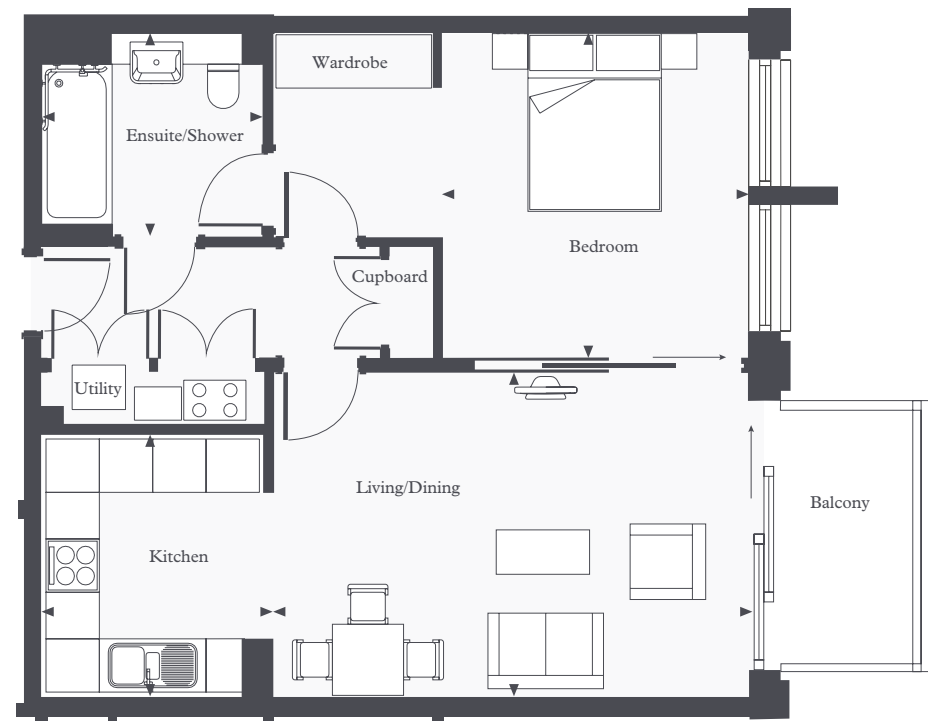
BEDROOM 1
 9ft 6in x 20ft 6in

BEDROOM 2
 14ft x 12ft 5in

BATHROOM
 7ft 10in x 7ft 7in



LATHERAM NORTH
ONE BEDROOM
 HOME



APARTMENT AREA – 646 SQ. FT – 60 SQ. M

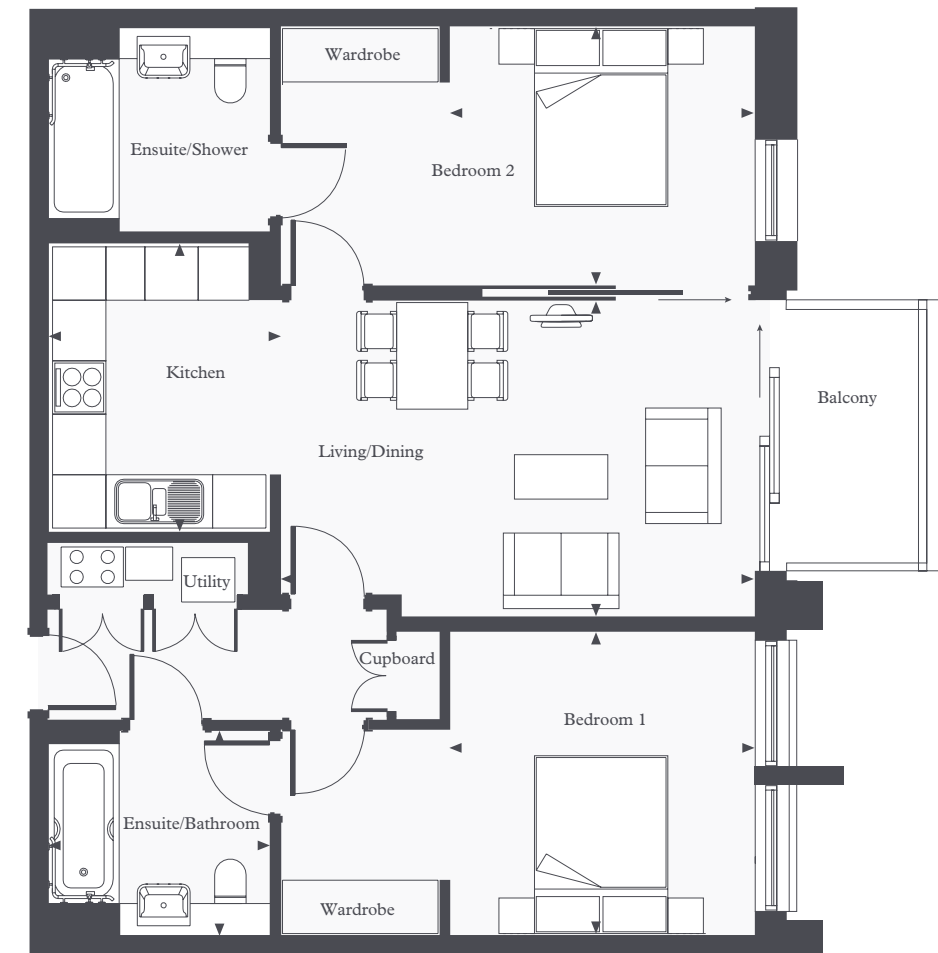
LIVING/DINING
 17ft 6in x 12ft

BEDROOM
 17ft 6in x 12ft

KITCHEN
 9ft 8in x 8ft 7in

ENSUITE/SHOWER
 17ft 6in x 12ft

LATHERAM NORTH
TWO BEDROOM
 HOME



APARTMENT AREA – 883 SQ. FT – 82 SQ. M

LIVING/DINING
 17ft 6in x 11ft 9in

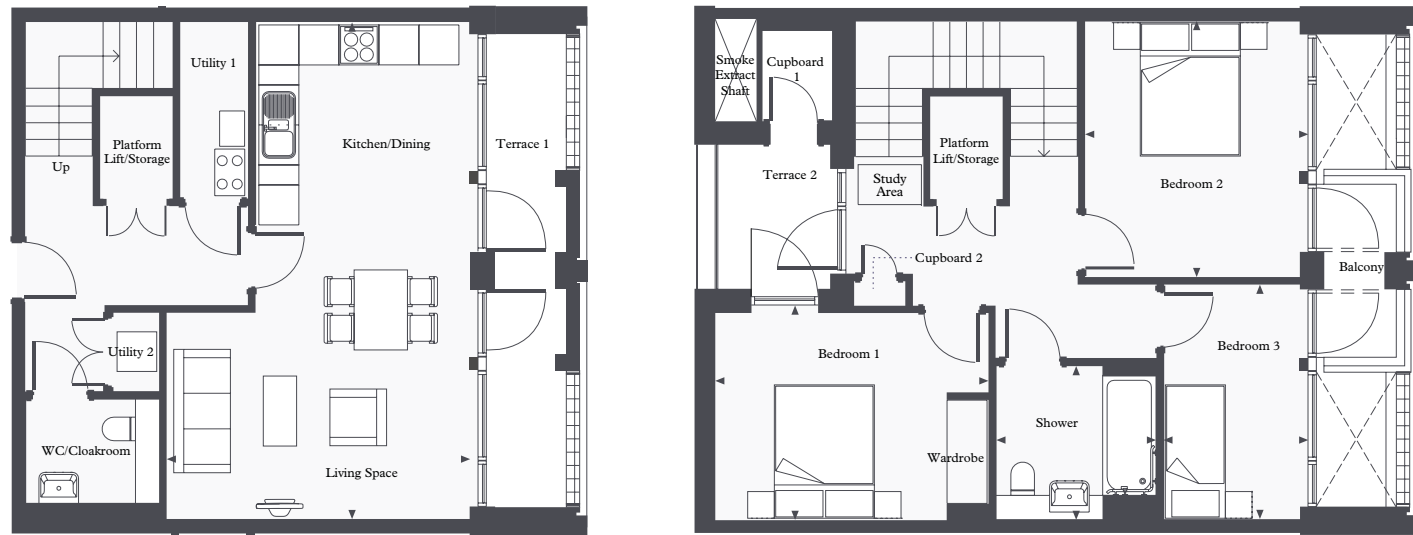
BEDROOM 1
 17ft 6in x 11ft 3in

BEDROOM 2
 17ft 6in x 9ft 9in

KITCHEN
 10ft 8in x 8ft 7in

ENSUITE/BATHROOM
 8ft 2in x 7ft 7in

LATHERAM NORTH
THREE BEDROOM
 HOME



APARTMENT AREA – 1,173 SQ. FT – 109 SQ. M

**LIVING/KITCHEN/
 DINING**
 14ft 11in x 24ft 6in

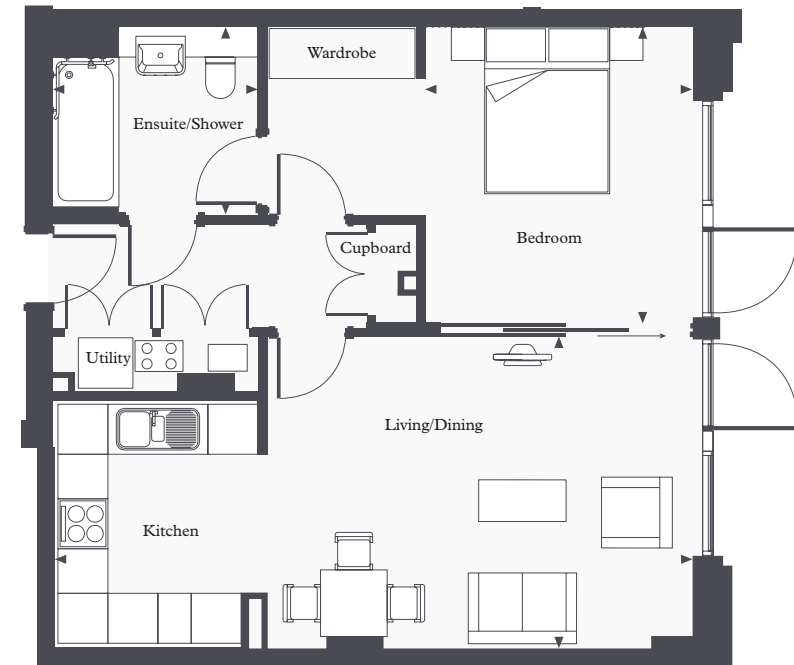
BEDROOM 1
 13ft 6in x 10ft 2in

BEDROOM 2
 10ft 7in x 12ft 7in

BEDROOM 3
 6ft 9in x 11ft 7in

SHOWER
 7ft 10in x 7ft 7in

LATHERAM SOUTH
ONE BEDROOM
 HOME



APARTMENT AREA – 624 SQ. FT – 58 SQ. M

**LIVING/KITCHEN/
 DINING**
 25ft 2in x 12ft 3in

BEDROOM
 11ft 10in x 10ft 6in

ENSUITE/SHOWER
 7ft 5in x 8ft 1in

LATHERAM SOUTH
TWO BEDROOM
 HOME



APARTMENT AREA – 904 SQ. FT – 84 SQ. M

**LIVING/KITCHEN/
 DINING**
 24ft 1in x 14ft 3in

BEDROOM 1
 18ft 9in x 12ft 10in

BEDROOM 2
 14ft 8in x 9ft 8in

BATHROOM
 8ft x 7ft 7in



OUR ASSURANCE
TO YOU

We at Pegasus are responsible for taking care of all the external building maintenance, buildings insurance and communal utility bills. We also ensure all the shared areas are meticulously cleaned and maintained.

Our dedicated team of friendly and approachable concierges and hosts work to ensure the support provided is always tailored to owners' needs. The Property Management team make regular visits to developments and conduct annual service-charge meetings, all with complete transparency. We strive to deliver the highest standard of service to owners' and believe passionately that transparency is fundamental to maintaining owners' peace of mind.



THE PEGASUS P R O M I S E

GETTING TO KNOW YOU PERSONALLY

We recognise that everyone is an individual, and are committed to listening and understanding our owners' needs, so that we can provide an outstanding service.

TAKING CARE OF TOMORROW THROUGH SUSTAINABILITY

We are committed to the wellbeing both of our owners' and the environment, and find that the two often go hand-in-hand. We take the time to explain the sustainability credentials and features of new homes, helping customers to live there healthily and sustainably.

CARING ABOUT THE LEGACY WE LEAVE BEHIND

When someone purchases a Pegasus home, they are contributing to a growing story that creates lasting value for themselves and the community. We are changing the way later living developments are created, for the better.

TAKING RESPONSIBILITY FOR OUR OWNERS' NEEDS

Every one of us at Pegasus is personally responsible for fulfilling the needs of our owners'. This means that when an owner contacts us, the person who receives the call is responsible for answering all their questions.

ACKNOWLEDGING AND REWARDING CUSTOMER LOYALTY

We believe that by listening well and providing an outstanding service, our customers will recommend us to their friends. When they do, we reciprocate with genuine appreciation.

CARING ABOUT OUR NEIGHBOURS

Pegasus is part of the Lifestory Group, creating homes for customers at every stage of their lives. We are committed to understanding the communities in which we work, so we can enhance neighbourhoods and benefit everyone.



PegasusLife
Properties of Character



PegasusLife

Properties of Character

01242 312198

Latheram House, Clarence Street,
Cheltenham, Gloucestershire, GL50 3PL

Part of **Lifestory**

Important Notice: These details are intended to give a general indication of the proposed development and floor layouts and are believed to be correct at the time of printing. Lifestory Group Limited and its subsidiary and associated companies with the Lifestory Group reserve the right to make any changes thought necessary to the development, individual specifications or floor layouts at any time. The content of this brochure does not constitute an offer or form any contract or an inducement of any such contract. All dimensions scaled from architect's drawings. Final dimensions may vary slightly.

Lifestory Group Limited: Compliant With The Consumer Code For New Homes.