

TEN DEGREES

CROYDON

We're elevating the rental experience

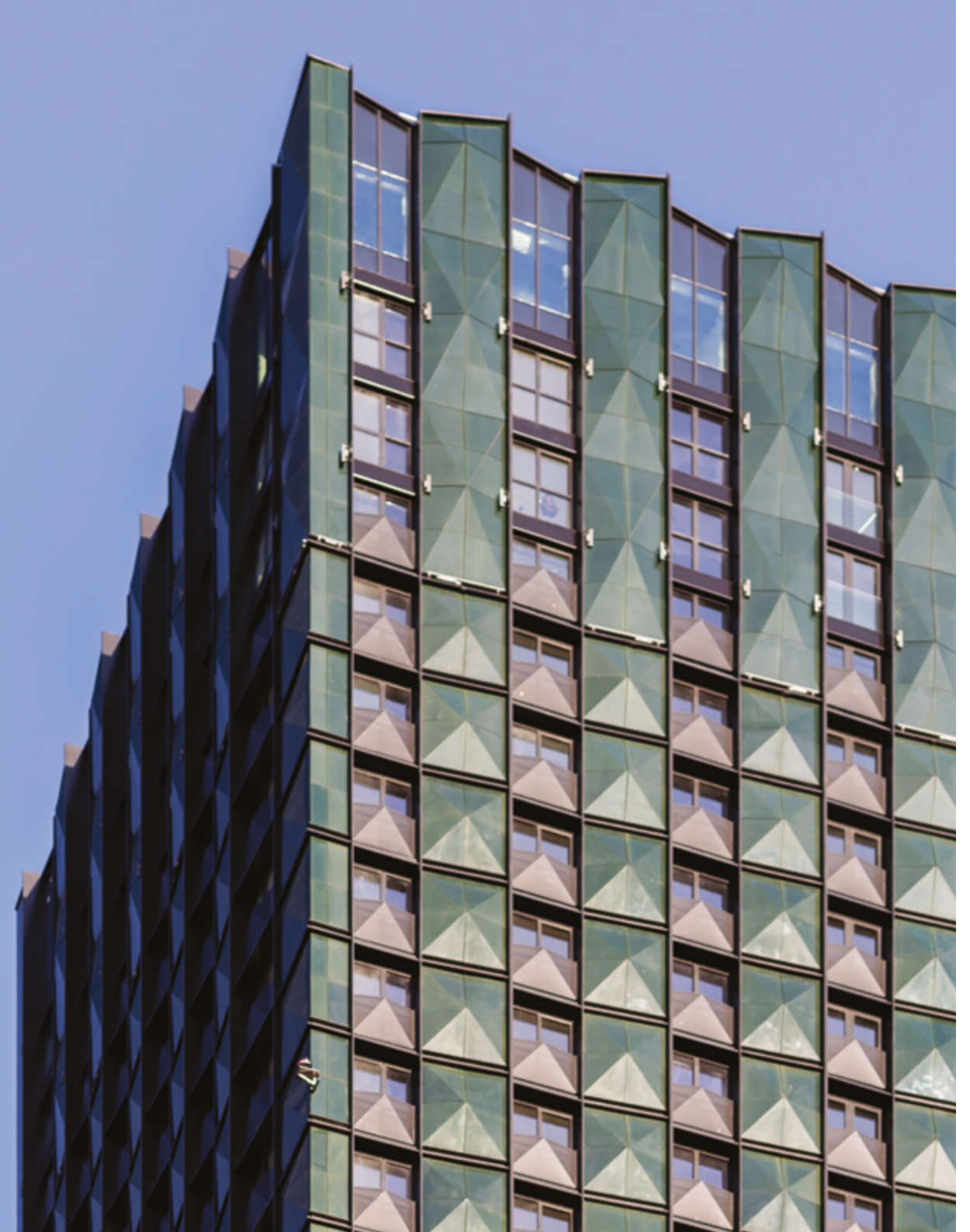
LIVE IN CROYDON'S TALLEST BUILDING.

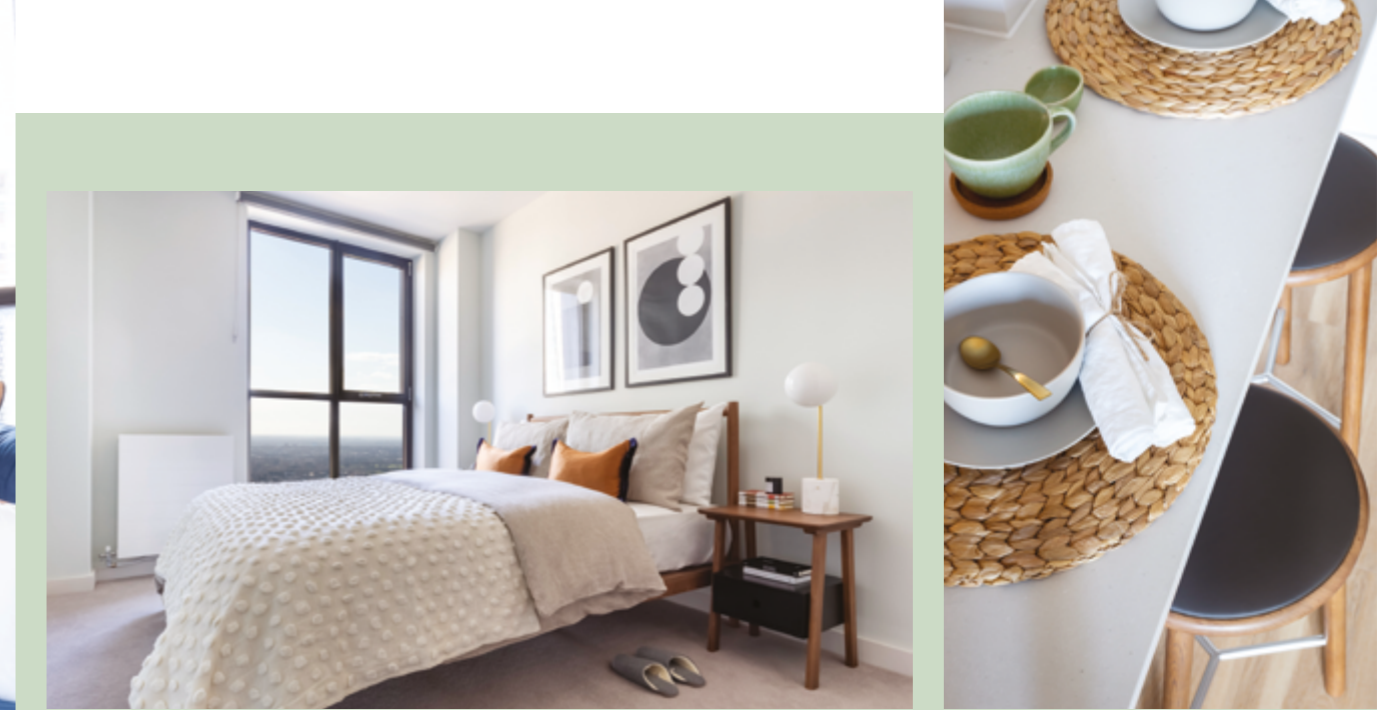
It's 44 floors of premium living, but more than that it's a place to call home.

Living here is as much about your community, as it is about you. A home that extends to countless spaces to work and play, including

a sky lounge, screening room and flexible workspaces.

Ten Degrees is managed by Greystar, so expect regular events that surprise and delight and an onsite team that help you get the most out of the local area and your new home.





Apartments. With more on top

Apartments to rent, with South London at your feet. Designed to the highest specification, complete with bespoke furniture, SMEG appliances, built in wardrobes and city views. Got furniture? No problem, choose unfurnished.



ONE BED



TWO BED



THREE BED



Naturally, premium living has its perks

Take in treadmill views at the rooftop gym, work from home in style in our co-working spaces or invite the group over for popcorn in

the cinema room. We're pet friendly too - even down to the pet spa on the ground floor.

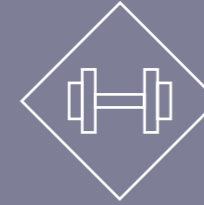
44
FLOORS OF
PREMIUM
LIVING



AMENITIES INCLUDE:



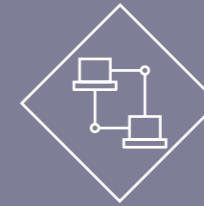
24/7 ON-SITE
TEAM



ROOFTOP
GYM



SKY
LOUNGE



FLEXIBLE
WORKSPACE



RESIDENT
EVENTS



PET
SPA



SCREENING
ROOM



GARDEN
TERRACE



South London living that's **connected**

WELCOME TO CROYDON. YOU'LL FIND US OPPOSITE
BOXPARK AND EAST CROYDON STATION.

Central
London

15
MINUTES

15
MINUTES

Gatwick

40
MINUTES

Brighton



Ready to live the high life?

100% OF OUR RESIDENTS WOULD RECOMMEND US*

Ten Degrees is managed by Greystar and we're a team you can trust. Don't just take our word for it either, read what our residents have to

say about our other properties on Homeviews and become part of a like-minded community.



* Based on a 2019 survey of Greystar UK residents, 100% of those who completed the survey would recommend us



TEN DEGREES

100A George St,
Croydon, CR0 1GP

Tendegreescroydon.co.uk

  @tendegreescroydon

CGI images of the amenity spaces included in this brochure are for indicative purposes only