

Shared Ownership

THE ACER
APARTMENTS

AT

WHITE
CITY
LIVING

Studio, 1 & 2 bedroom apartments



Welcome to
THE ACER APARTMENTS *at White City Living*

Community	6
Lifestyle	8
Local Area	10
Connections	12
Specification	14
Site Plan	16
Floorplans	18
Shared Ownership	40
About Legal & General	44
How to find us	46



A home at The Acer Apartments makes it possible for you to enjoy city living that's as exclusive as the London hotspots you'll find on your doorstep. Just minutes from some of the capital's greatest shopping, arts, entertainment and education, this stunning collection of apartments has been designed and built to the highest specification by St James, part of the Berkeley Group, and made accessible through Shared Ownership by Legal & General Affordable Homes. Take your dream of owning a space in the city to a whole new level.

THE ACER APARTMENTS

WHITE CITY LIVING



WELCOME TO THE *community*

The Acer Apartments are located within the spectacular White City Living development, which, in itself, forms a tight community at the heart of this sought-after area. While each apartment's interior has been designed to offer the perfect personal space, just as much time and effort has been spent creating a remarkable selection of shared spaces for everyone to enjoy. The result is a relaxed and welcoming environment.

Take a walk under the railway arches to discover all that Westfield has to offer, including Amazon's new store, which sells items that website users rate 4 stars and above.

that's local

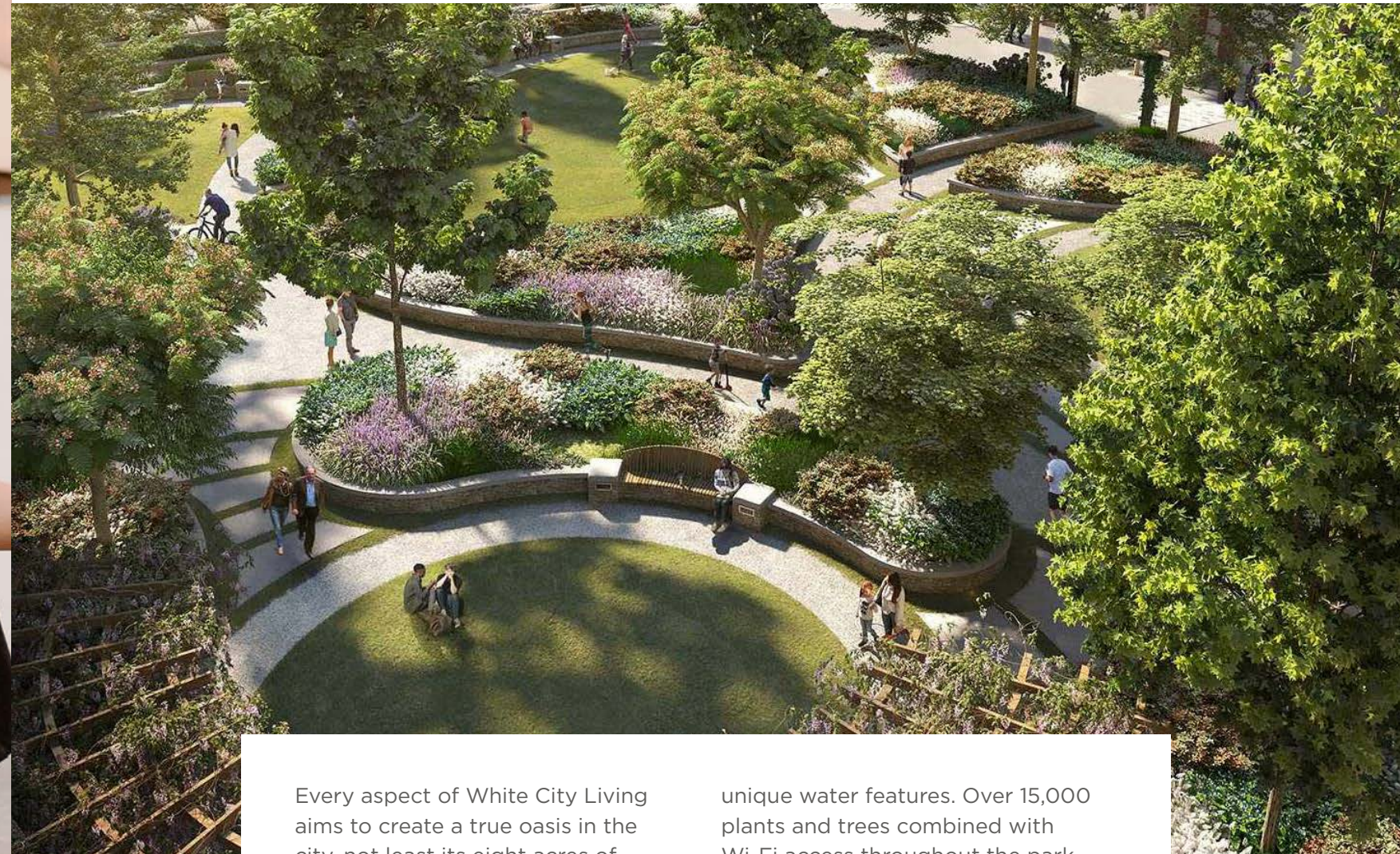


EMBRACE
CITY

life



THE PLACE TO LOSE *yourself*



Every aspect of White City Living aims to create a true oasis in the city, not least its eight acres of extraordinary parks and gardens. These expertly crafted outdoor spaces achieve absolute serenity and make the perfect place to unwind.

Reflect on a busy week in the oriental water gardens, find your perfect escape in the six-acre public park or let your stresses trickle away to the relaxing sound of one of many

unique water features. Over 15,000 plants and trees combined with Wi-Fi access throughout the park makes it possible to strike the ultimate work/life balance.

As a resident of White City Living you will have access to the dedicated Residents' App where you can interact with the concierge and find general information about the development and things going on in the community.

BE A PRODUCT *of your surroundings*



To say there's a lot going on in White City would be an understatement. It's currently one of the most exciting places to be in London – and for good reason.

An obvious attraction is Westfield London, the largest shopping centre in Europe offering nearly 400 stores, cafés and restaurants, 20 cinema screens, bowling and mini golf.

The neighbouring BBC Studios brings unbeatable talent to the area. This is reflected in a thriving arts and entertainment scene, including independent film at Electric Cinema, endless inspiration at the Design Museum and a hive of collaborative creativity at White City House, one of the latest additions to the Soho Works members' club.

Nearby Holland Park is the perfect place to unwind, with its 54 acres of beautiful gardens and natural woodland.

MAKE THE
MOST OF
YOUR *everyday*

Better connected living

It could be the bright lights of the West End, the irresistible charm of Notting Hill or the exclusive glamour of Bond Street. Whatever side of London you love, the choice of travel options puts it all within easy reach.

The Car Club provides an alternative via its user-friendly app, offering affordable trips which include fuel, insurance, and London Congestion Charge. You'll also have peace of mind, with reliable 24/7 breakdown cover and customer support.



Tube

CENTRAL LINE - WHITE CITY STATION

Shepherd's Bush	2 min
Notting Hill Gate	5 min
Bond Street	12 min
Oxford Circus	13 min
Bank	22 min
London Liverpool St	24 min
Stratford	33 min

HAMMERSMITH & CITY LINE - WOOD LANE STATION

Ladbroke Grove	3 min
Hammersmith	5 min
Paddington	8 min
Baker Street	13 min
Euston Square	17 min
Farringdon	22 min
Whitechapel	35 min

White City Bus Station

ROUTES:	STOPS INCLUDE:
31	Holland Park, Notting Hill Gate & Camden Town Station
49	The Design Museum & Kensington Palace
148	Marble Arch, Hyde Park Corner, Parliament Square & Imperial War Museum
207	Ealing Broadway Station & Bond Street
228	Willesden Junction Station & Central Middlesex Hospital
237	Stamford Brook Station & Kew Bridge Station
260	Acton Main Line Station & Golders Green Station
316	Latimer Road Station
607	Uxbridge Station

Walk

Bluebird Café	2 min
Westfield London	3 min
Endo at the Rotunda (Above Electric Cinema)	4 min
White City Bus Station	5 min
Troubadour Theatre	5 min
Butterscotch Bakery	7 min
Bush Theatre	10 min
O2 Shepherd's Bush Empire	12 min

Cycle

Portobello Rd	12 min
Design Museum	12 min
Hammersmith Embankment	14 min
Kensington High St	15 min
Hyde Park	20 min
Victoria & Albert Museum	21 min
Knightsbridge	23 min

Map not to scale. Journey times are taken from tfl.gov.uk and google.co.uk/maps and are approximate only. Tube lines only show a selection of stations on each line. Distances are taken from google.co.uk/maps and are approximate only. Bus information taken from tfl.gov.uk/bus/stop/490003375AP/white-city-bus-station.

IT'S ALL
IN THE

details

KITCHEN

- Contemporary Euro Cucina handleless white kitchen with grey laminate worktop and upstand
- Under-unit lighting to wall cabinets
- Stainless steel 1.5 bowl sink with chrome mixer tap
- Stainless steel splashback to hob
- Induction hob, stainless steel single oven and integrated cooker hood
- Integrated washing machine, dishwasher* and fridge/freezer

BATHROOM

- Twyfords contemporary white sanitaryware
- White bath with thermostatic shower and glass screen
- Chrome mixer tap to basin
- White brick effect wall tiling
- Chrome electric heated towel rail
- Mirror above vanity area

SHOWER ROOM

- Twyfords contemporary white sanitaryware
- White shower tray with thermostatic shower valve and glass enclosure
- Chrome mixer tap to basin
- White brick effect wall tiling
- Chrome electric heated towel rail
- Mirror above vanity area

FLOORING

- Karndean wood effect flooring to hall and kitchen/living/dining area
- Floor tiles to bathroom and shower room
- Carpet to bedrooms

*Some apartments have a slimline dishwasher, please clarify with a Sales Consultant. **Selected apartments have white sockets and switches, please clarify with a Sales Consultant.

Specification correct at time of broadcast, but is subject to change without notice. Unless specifically incorporated in writing into the sales contract the specification is not intended to form part of any contract or warranty.

GENERAL

- Aluminium framed full height double glazed windows
- Ceilings painted matt white, walls painted in Dusted Moss
- Architraves and skirtings painted satin white
- Roller blinds to all windows
- Flush white internal doors with lever on rose chrome door furniture
- Heating and hot water provided via District heating system. Heat Interface Unit (HIU) within each apartment registers usage. Heating provided by white contemporary radiators
- Letter boxes to apartment front doors
- NHBC 10-year warranty and 1-year St James' warranty

ELECTRICAL

- Video entry system
- White LED downlights to living room, bathroom and shower room
- Pendant lighting to bedrooms
- Chrome sockets and switches throughout**
- TV point to living room
- Superfast broadband provision via Hyperoptic. Subject to purchaser subscription
- Sprinkler system and heat detector
- Shaver socket to bathroom and shower room

COMMUNAL AREAS

- Lifts to all floors
- Carpet to lobby and corridors
- Landscaped gardens at ground level and communal roof terrace on Level 15
- Cycle storage

CONCIERGE & ESTATE MANAGEMENT

- Access to 24-hour concierge
- 24-hour estate management and security
- Access to White City Residents' App



SITE PLAN

A PLACE FULL OF CHARACTER



- Floors 1–12: Rented Apartments by Legal & General Affordable Homes and Optivo
- Floors 13–22: Shared Ownership Apartments by Legal & General Affordable Homes
- St James apartments
- Extra Care Rented Apartments for Over 55 by Notting Hill Genesis

The development layout does not show details of gradients of land, boundary treatments, local authority street lighting or landscaping. It is our intention to build in accordance with this layout. However, there may be occasions when the house designs, boundaries, landscaping and positions of roads and footpaths change as the development proceeds. Please speak to a Sales Consultant for more details.

Floor 13



STUDIO

129

Kitchen/Living/Dining Area
5.59m × 3.00m 18'4" × 9'10"

Bedroom
4.39m × 2.19m 14'5" × 7'2"

Total Area
38.9 sq. m. 419 sq. ft.

131

Kitchen/Living/Dining Area
6.95m × 2.10m 22'10" × 6'11"

Bedroom
3.70m × 2.12m 12'2" × 7'0"

Total Area
37.1 sq. m. 399 sq. ft.

132

Kitchen/Living/Dining Area
5.42m × 3.05m 17'10" × 10'0"

Bedroom
4.19m × 2.19m 13'9" × 7'2"

Total Area
37 sq. m. 398 sq. ft.

1 BEDROOM

120

Kitchen/Living/Dining Area
6.72m × 4.00m 22'1" × 13'2"

Bedroom
4.84m × 2.97m 15'11" × 9'9"

Total Area
54.9 sq. m. 591 sq. ft.

121

Kitchen/Living/Dining Area
7.43m × 4.44m 24'5" × 14'7"

Bedroom
5.24m × 2.92m 17'2" × 9'7"

Total Area
57.1 sq. m. 615 sq. ft.

1 BEDROOM

122

Kitchen/Living/Dining Area
7.43m × 4.44m 24'5" × 14'7"

Bedroom
5.24m × 2.89m 17'2" × 9'6"

Total Area
57.1 sq. m. 615 sq. ft.

124

Kitchen/Living/Dining Area
7.06m × 3.57m 23'2" × 11'9"

Bedroom
4.75m × 2.73m 15'7" × 9'0"

Total Area
50 sq. m. 574 sq. ft.

127

Kitchen/Living/Dining Area
7.34m × 3.86m 24'1" × 12'8"

Bedroom
5.02m × 2.73m 16'6" × 8'11"

Total Area
50 sq. m. 538 sq. ft.

128

Kitchen/Living/Dining Area
6.55m × 3.59m 21'6" × 11'10"

Bedroom
5.02m × 3.18m 16'6" × 10'5"

Total Area
50.1 sq. m. 539 sq. ft.

133

Kitchen/Living/Dining Area
6.36m × 3.50m 20'11" × 11'6"

Bedroom
3.76m × 3.72m 12'4" × 12'2"

Total Area
50 sq. m. 538 sq. ft.

2 BEDROOM

119

Kitchen/Living/Dining Area
5.05m × 4.16m 16'7" × 13'8"

Bedroom 1
5.21m × 2.72m 17'1" × 8'11"

Bedroom 2
3.60m × 2.37m 11'10" × 7'9"

Total Area
65.1 sq. m. 701 sq. ft.

123

Kitchen/Living/Dining Area
8.33m × 5.04m 27'4" × 16'7"

Bedroom 1
4.92m × 2.75m 16'2" × 9'1"

Bedroom 2
3.62m × 2.17m 11'11" × 7'1"

Total Area
62 sq. m. 667 sq. ft.

125

Kitchen/Living/Dining Area
7.83m × 3.17m 25'8" × 10'5"

Bedroom 1
4.92m × 2.79m 16'2" × 9'2"

Bedroom 2
3.69m × 2.14m 12'2" × 7'0"

Total Area
63.8 sq. m. 687 sq. ft.

126

Kitchen/Living/Dining Area
7.34m × 3.96m 24'1" × 13'0"

Bedroom 1
4.42m × 2.97m 14'6" × 9'9"

Bedroom 2
3.44m × 2.42m 11'4" × 7'11"

Total Area
70.4 sq. m. 758 sq. ft.

130

Kitchen/Living/Dining Area
8.27m × 3.15m 27'2" × 10'4"

Bedroom 1
4.09m × 3.32m 13'5" × 10'11"

Bedroom 2
3.18m × 2.59m 10'6" × 8'6"

Total Area
61.4 sq. m. 661 sq. ft.



St – Store

The floorplans provided are intended to only give a general indication of the proposed floor layout and are not drawn to scale. Measurements are given to the widest point, are approximate and given as a guide only. Unless specifically incorporated in writing into the sales contract the specification is not intended to form part of any contract or warranty.

Floor 14



STUDIO

144

Kitchen/Living/Dining Area
5.59m × 3.00m 18'4" × 9'10"

Bedroom
4.39m × 2.19m 14'5" × 7'2"

Total Area
38.9 sq. m. 419 sq. ft.

146

Kitchen/Living/Dining Area
6.95m × 2.10m 22'10" × 6'11"

Bedroom
3.70m × 2.12m 12'2" × 7'0"

Total Area
37.1 sq. m. 399 sq. ft.

147

Kitchen/Living/Dining Area
5.42m × 3.05m 17'10" × 10'0"

Bedroom
4.19m × 2.19m 13'9" × 7'2"

Total Area
37 sq. m. 398 sq. ft.

1 BEDROOM

135

Kitchen/Living/Dining Area
6.72m × 4.00m 22'1" × 13'2"

Bedroom
4.84m × 2.97m 15'11" × 9'9"

Total Area
54.9 sq. m. 591 sq. ft.

136

Kitchen/Living/Dining Area
8.24m × 3.79m 27'1" × 12'5"

Bedroom
4.67m × 3.57m 15'4" × 11'9"

Total Area
57.1 sq. m. 615 sq. ft.

1 BEDROOM

137

Kitchen/Living/Dining Area
8.24m × 3.79m 27'1" × 12'5"

Bedroom
4.67m × 2.97m 15'4" × 9'9"

Total Area
57.1 sq. m. 615 sq. ft.

139

Kitchen/Living/Dining Area
7.06m × 3.57m 23'2" × 11'9"

Bedroom
4.75m × 2.73m 15'7" × 9'0"

Total Area
53.3 sq. m. 574 sq. ft.

142

Kitchen/Living/Dining Area
7.35m × 3.86m 24'1" × 12'8"

Bedroom
5.02m × 2.72m 16'6" × 8'11"

Total Area
50 sq. m. 538 sq. ft.

143

Kitchen/Living/Dining Area
6.55m × 3.59m 21'6" × 11'10"

Bedroom
5.02m × 3.18m 16'6" × 10'5"

Total Area
50.1 sq. m. 539 sq. ft.

148

Kitchen/Living/Dining Area
6.36m × 3.50m 20'11" × 11'6"

Bedroom
3.76m × 3.72m 12'4" × 12'2"

Total Area
50 sq. m. 538 sq. ft.

2 BEDROOM

134

Kitchen/Living/Dining Area
5.05m × 4.16m 16'7" × 13'8"

Bedroom 1
5.21m × 2.72m 17'1" × 8'11"

Bedroom 2
3.60m × 2.37m 11'10" × 7'9"

Total Area
65.1 sq. m. 701 sq. ft.

138

Kitchen/Living/Dining Area
8.33m × 2.74m 27'4" × 9'0"

Bedroom 1
4.92m × 2.75m 16'2" × 9'1"

Bedroom 2
3.62m × 2.17m 11'11" × 7'1"

Total Area
62 sq. m. 667 sq. ft.

140

Kitchen/Living/Dining Area
7.83m × 3.17m 25'8" × 10'5"

Bedroom 1
4.92m × 2.79m 16'2" × 9'2"

Bedroom 2
3.69m × 2.14m 12'2" × 7'0"

Total Area
63.8 sq. m. 687 sq. ft.

141

Kitchen/Living/Dining Area
7.34m × 3.96m 24'1" × 13'0"

Bedroom 1
4.42m × 2.97m 14'6" × 9'9"

Bedroom 2
3.44m × 2.42m 11'4" × 7'11"

Total Area
70.4 sq. m. 758 sq. ft.

145

Kitchen/Living/Dining Area
8.27m × 2.95m 27'2" × 9'8"

Bedroom 1
4.06m × 3.19m 13'4" × 10'6"

Bedroom 2
3.18m × 2.59m 10'6" × 8'6"

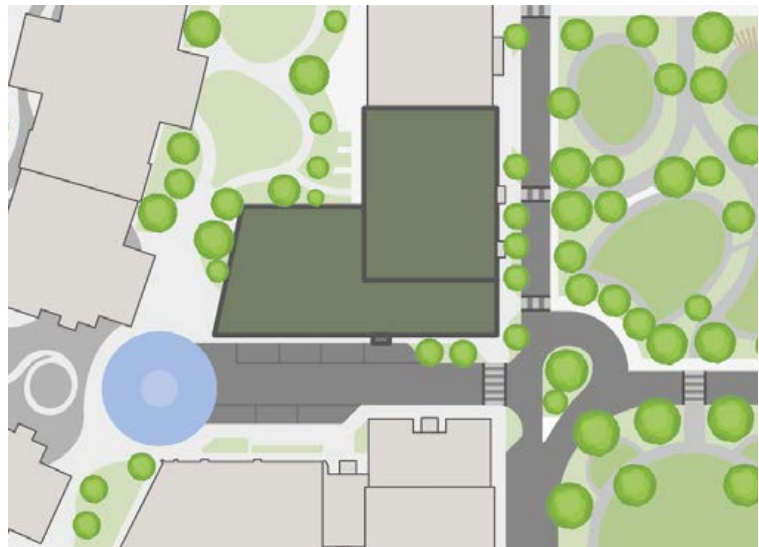
Total Area
61.4 sq. m. 661 sq. ft.



St – Store

The floorplans provided are intended to only give a general indication of the proposed floor layout and are not drawn to scale. Measurements are given to the widest point, are approximate and given as a guide only. Unless specifically incorporated in writing into the sales contract the specification is not intended to form part of any contract or warranty.

Floor 15



STUDIO

149

Kitchen/Living/Dining Area
7.83m × 3.49m 25'8" × 11'6"
Bedroom
4.80m × 2.45m 15'9" × 8'1"
Total Area
40.4 sq. m. 435 sq. ft.

150

Kitchen/Living/Dining Area
7.83m × 2.58m 25'8" × 8'6"
Bedroom
4.75m × 2.21m 15'7" × 7'3"
Total Area
37.2 sq. m. 400 sq. ft.

151

Kitchen/Living/Dining Area
7.83m × 2.71m 25'8" × 8'11"
Bedroom
5.81m × 2.20m 19'1" × 7'3"
Total Area
40.2 sq. m. 433 sq. ft.

1 BEDROOM

152

Kitchen/Living/Dining Area
8.24m × 3.79m 27'1" × 12'5"
Bedroom
4.67m × 3.57m 15'4" × 11'9"
Total Area
57.1 sq. m. 615 sq. ft.

153

Kitchen/Living/Dining Area
8.24m × 3.79m 27'1" × 12'5"
Bedroom
4.67m × 3.57m 15'4" × 11'9"
Total Area
57.1 sq. m. 615 sq. ft.

155

Kitchen/Living/Dining Area
7.06m × 3.57m 23'2" × 11'9"
Bedroom
4.75m × 2.73m 15'7" × 9'0"
Total Area
53.3 sq. m. 574 sq. ft.

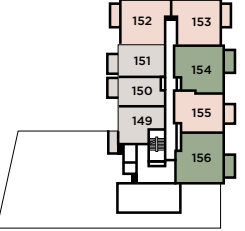
2 BEDROOM

154

Kitchen/Living/Dining Area
8.33m × 5.04m 27'4" × 16'7"
Bedroom 1
4.92m × 2.75m 16'2" × 9'1"
Bedroom 2
3.62m × 2.17m 11'11" × 7'1"
Total Area
62 sq. m. 667 sq. ft.

156

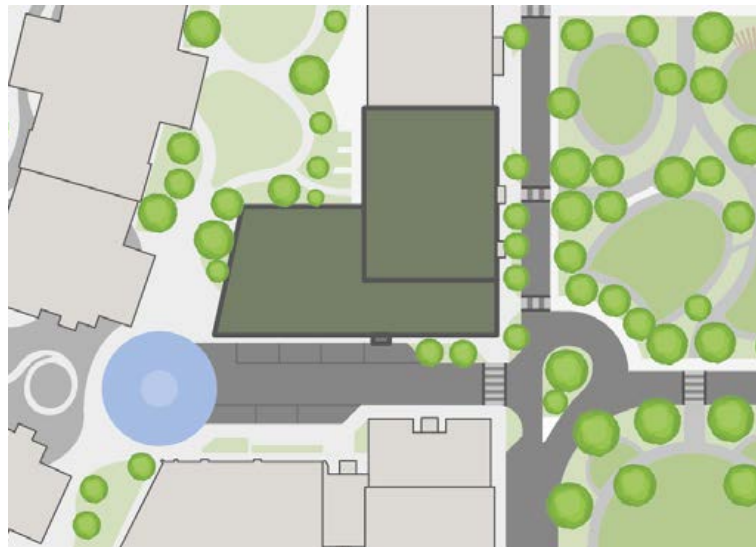
Kitchen/Living/Dining Area
7.83m × 3.04m 25'8" × 10'0"
Bedroom 1
4.92m × 2.88m 16'2" × 9'5"
Bedroom 2
3.59m × 2.17m 11'10" × 7'2"
Total Area
66.3 sq. m. 714 sq. ft.



St – Store
– NatureMat

The floorplans provided are intended to only give a general indication of the proposed floor layout and are not drawn to scale. Measurements are given to the widest point, are approximate and given as a guide only. Unless specifically incorporated in writing into the sales contract the specification is not intended to form part of any contract or warranty.

Floor 16



STUDIO

157

Kitchen/Living/Dining Area
7.83m × 3.49m 25'8" × 11'6"

Bedroom
4.80m × 2.45m 15'9" × 8'1"

Total Area
40.4 sq. m. 435 sq. ft.

158

Kitchen/Living/Dining Area
7.83m × 2.71m 25'8" × 8'11"

Bedroom
5.81m × 2.20m 19'1" × 7'3"

Total Area
37.2 sq. m. 400 sq. ft.

159

Kitchen/Living/Dining Area
7.83m × 2.71m 25'8" × 8'11"

Bedroom
5.81m × 2.20m 19'1" × 7'3"

Total Area
40.2 sq. m. 422 sq. ft.

1 BEDROOM

160

Kitchen/Living/Dining Area
8.24m × 3.79m 27'1" × 12'5"

Bedroom
4.67m × 3.57m 15'4" × 11'9"

Total Area
57.1 sq. m. 615 sq. ft.

161

Kitchen/Living/Dining Area
8.24m × 3.79m 27'1" × 12'5"

Bedroom
4.67m × 3.54m 15'4" × 11'7"

Total Area
57.1 sq. m. 615 sq. ft.

163

Kitchen/Living/Dining Area
6.78m × 3.57m 22'3" × 11'9"

Bedroom
4.52m × 2.73m 14'10" × 9'0"

Total Area
53.3 sq. m. 574 sq. ft.

2 BEDROOM

162

Kitchen/Living/Dining Area
8.33m × 5.04m 27'4" × 16'7"

Bedroom 1
4.92m × 2.75m 16'2" × 9'1"

Bedroom 2
3.62m × 2.17m 11'11" × 7'1"

Total Area
62 sq. m. 667 sq. ft.

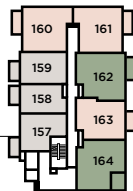
164

Kitchen/Living/Dining Area
5.65m × 4.21m 18'6" × 13'10"

Bedroom 1
4.92m × 2.72m 16'2" × 8'11"

Bedroom 2
3.65m × 2.58m 12'0" × 8'6"

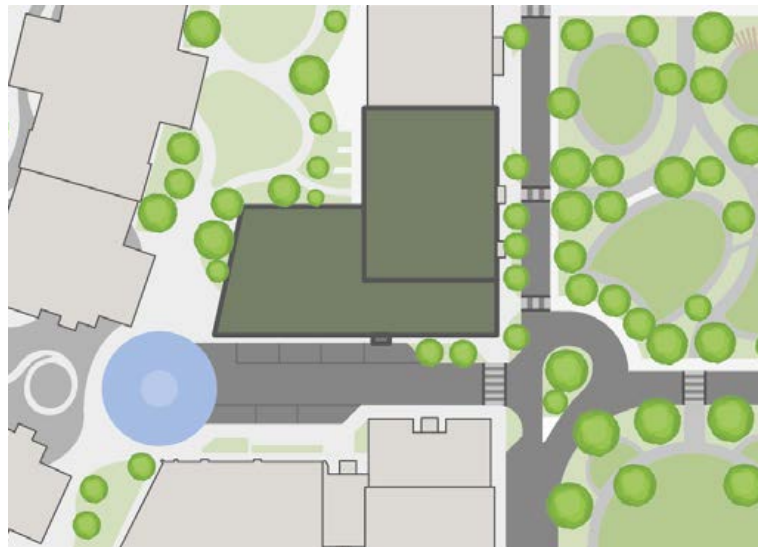
Total Area
61.6 sq. m. 663 sq. ft.



St - Store

The floorplans provided are intended to only give a general indication of the proposed floor layout and are not drawn to scale. Measurements are given to the widest point, are approximate and given as a guide only. Unless specifically incorporated in writing into the sales contract the specification is not intended to form part of any contract or warranty.

Floor 17



STUDIO

165

Kitchen/Living/Dining Area
7.83m × 3.49m 25'8" × 11'8"

Bedroom
4.80m × 2.45m 15'9" × 8'1"

Total Area
40.4 sq. m. 435 sq. ft.

166

Kitchen/Living/Dining Area
7.83m × 2.58m 19'1" × 8'6"

Bedroom
4.75m × 2.21m 15'7" × 7'3"

Total Area
37.2 sq. m. 400 sq. ft.

167

Kitchen/Living/Dining Area
7.83m × 2.71m 25'8" × 8'11"

Bedroom
5.81m × 2.20m 19'1" × 7'3"

Total Area
40.2 sq. m. 433 sq. ft.

1 BEDROOM

168

Kitchen/Living/Dining Area
8.24m × 3.99m 27'1" × 13'1"

Bedroom
4.67m × 3.57m 15'4" × 11'9"

Total Area
57.1 sq. m. 615 sq. ft.

169

Kitchen/Living/Dining Area
8.24m × 3.99m 27'1" × 13'1"

Bedroom
4.67m × 3.54m 15'4" × 11'7"

Total Area
57.1 sq. m. 615 sq. ft.

171

Kitchen/Living/Dining Area
7.06m × 5.13m 23'2" × 16'10"

Bedroom
4.75m × 2.73m 15'7" × 9'0"

Total Area
53.3 sq. m. 574 sq. ft.

2 BEDROOM

170

Kitchen/Living/Dining Area
8.33m × 5.04m 27'4" × 16'7"

Bedroom 1
4.92m × 2.75m 16'2" × 9'1"

Bedroom 2
3.62m × 2.17m 11'11" × 7'1"

Total Area
62 sq. m. 667 sq. ft.

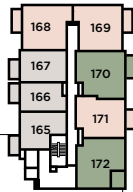
172

Kitchen/Living/Dining Area
5.63m × 4.20m 18'6" × 13'10"

Bedroom 1
4.92m × 2.72m 16'2" × 8'11"

Bedroom 2
3.65m × 2.58m 12'0" × 8'6"

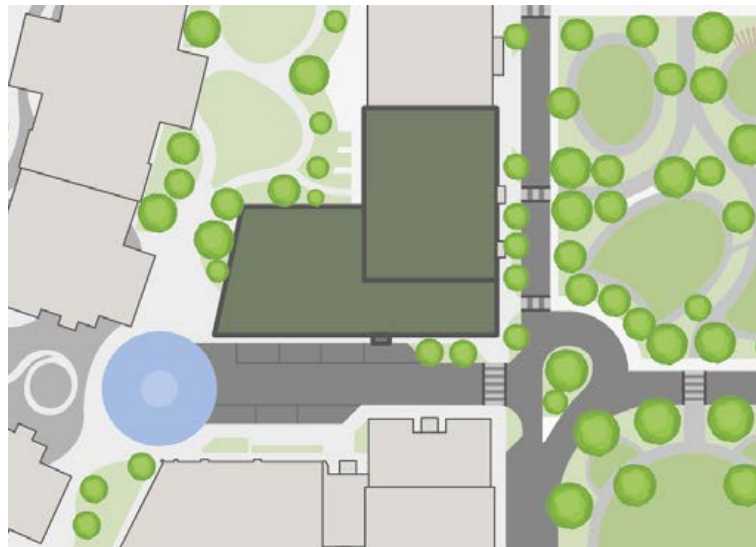
Total Area
61.6 sq. m. 663 sq. ft.



St - Store

The floorplans provided are intended to only give a general indication of the proposed floor layout and are not drawn to scale. Measurements are given to the widest point, are approximate and given as a guide only. Unless specifically incorporated in writing into the sales contract the specification is not intended to form part of any contract or warranty.

Floor 18



STUDIO

173

Kitchen/Living/Dining Area
7.86m × 3.52m 25'10" × 11'7"

Bedroom
4.83m × 2.48m 15'10" × 8'2"

Total Area
40.4 sq. m. 435 sq. ft.

179

Kitchen/Living/Dining Area
5.14m × 3.30m 16'11" × 10'10"

Bedroom
4.39m × 2.00m 14'5" × 6'7"

Total Area
37.9 sq. m. 408 sq. ft.

174

Kitchen/Living/Dining Area
7.86m × 2.61m 25'10" × 8'7"

Bedroom
4.78m × 2.24m 15'9" × 7'5"

Total Area
37.2 sq. m. 400 sq. ft.

180

Kitchen/Living/Dining Area
4.56m × 3.51m 15'0" × 11'6"

Bedroom
4.28m × 2.11m 14'1" × 6'11"

Total Area
37 sq. m. 398 sq. ft.

175

Kitchen/Living/Dining Area
7.86m × 2.74m 25'10" × 9'0"

Bedroom
5.84m × 2.23m 19'2" × 7'4"

Total Area
40.2 sq. m. 433 sq. ft.

1 BEDROOM

176

Kitchen/Living/Dining Area
8.27m × 3.82m 27'2" × 12'7"

Bedroom
4.70m × 3.60m 15'5" × 11'10"

Total Area
57.1 sq. m. 615 sq. ft.

178

Kitchen/Living/Dining Area
8.36m × 2.80m 27'5" × 9'2"

Bedroom
4.55m × 2.75m 14'11" × 9'0"

Total Area
51.3 sq. m. 552 sq. ft.

177

Kitchen/Living/Dining Area
8.27m × 3.82m 27'2" × 12'7"

Bedroom
4.70m × 3.57m 15'5" × 11'9"

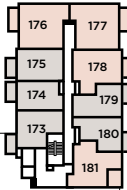
Total Area
57.1 sq. m. 615 sq. ft.

181

Kitchen/Living/Dining Area
6.78m × 3.45m 22'3" × 11'4"

Bedroom
4.43m × 2.86m 14'7" × 9'5"

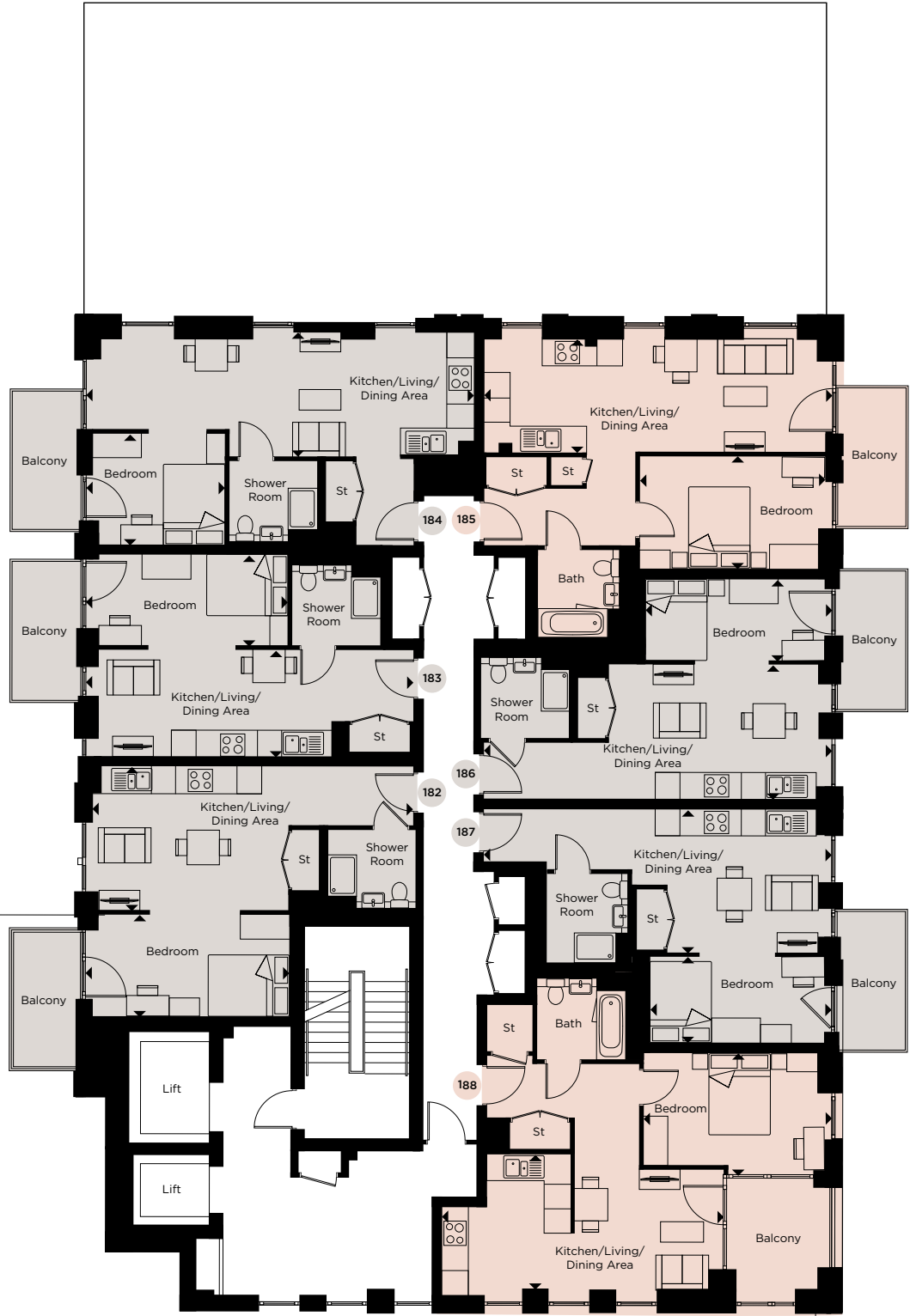
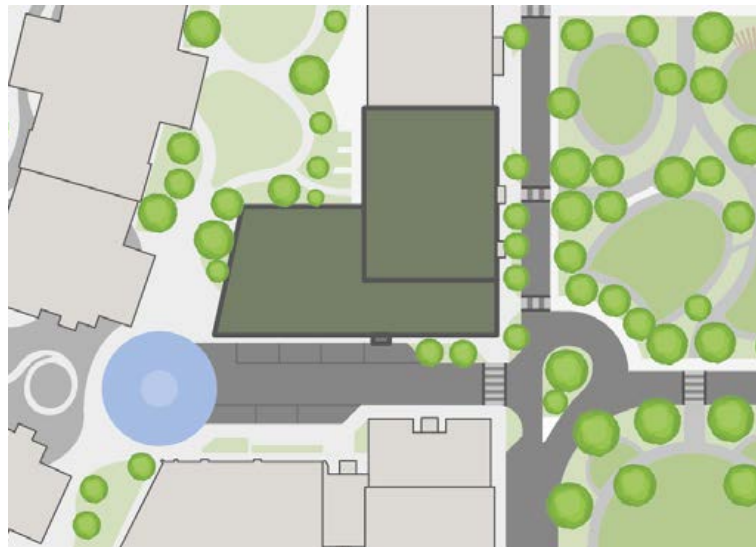
Total Area
50.6 sq. m. 545 sq. ft.



St – Store

The floorplans provided are intended to only give a general indication of the proposed floor layout and are not drawn to scale. Measurements are given to the widest point, are approximate and given as a guide only. Unless specifically incorporated in writing into the sales contract the specification is not intended to form part of any contract or warranty.

Floor 19



STUDIO

182

Kitchen/Living/Dining Area
7.83m × 3.49m 25'8" × 11'6"

Bedroom
4.80m × 2.45m 15'9" × 8'1"

Total Area
40.4 sq. m. 435 sq. ft.

186

Kitchen/Living/Dining Area
5.11m × 3.27m 16'9" × 10'9"

Bedroom
4.36m × 1.97m 14'4" × 6'6"

Total Area
37.9 sq. m. 408 sq. ft.

183

Kitchen/Living/Dining Area
7.68m × 2.58m 25'2" × 6'6"

Bedroom
4.60m × 2.21m 15'1" × 7'3"

Total Area
37.2 sq. m. 400 sq. ft.

187

Kitchen/Living/Dining Area
4.48m × 3.48m 14'9" × 11'5"

Bedroom
4.25m × 2.08m 13'11" × 6'10"

Total Area
37 sq. m. 398 sq. ft.

184

Kitchen/Living/Dining Area
9.30m × 3.02m 30'6" × 9'11"

Bedroom
3.21m × 2.71m 10'7" × 8'11"

Total Area
45.5 sq. m. 490 sq. ft.

1 BEDROOM

185

Kitchen/Living/Dining Area
8.33m × 2.76m 27'4" × 9'1"

Bedroom
4.51m × 2.72m 14'10" × 8'11"

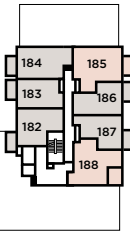
Total Area
51.9 sq. m. 559 sq. ft.

188

Kitchen/Living/Dining Area
6.75m × 3.26m 22'2" × 10'9"

Bedroom
4.40m × 2.83m 14'5" × 9'4"

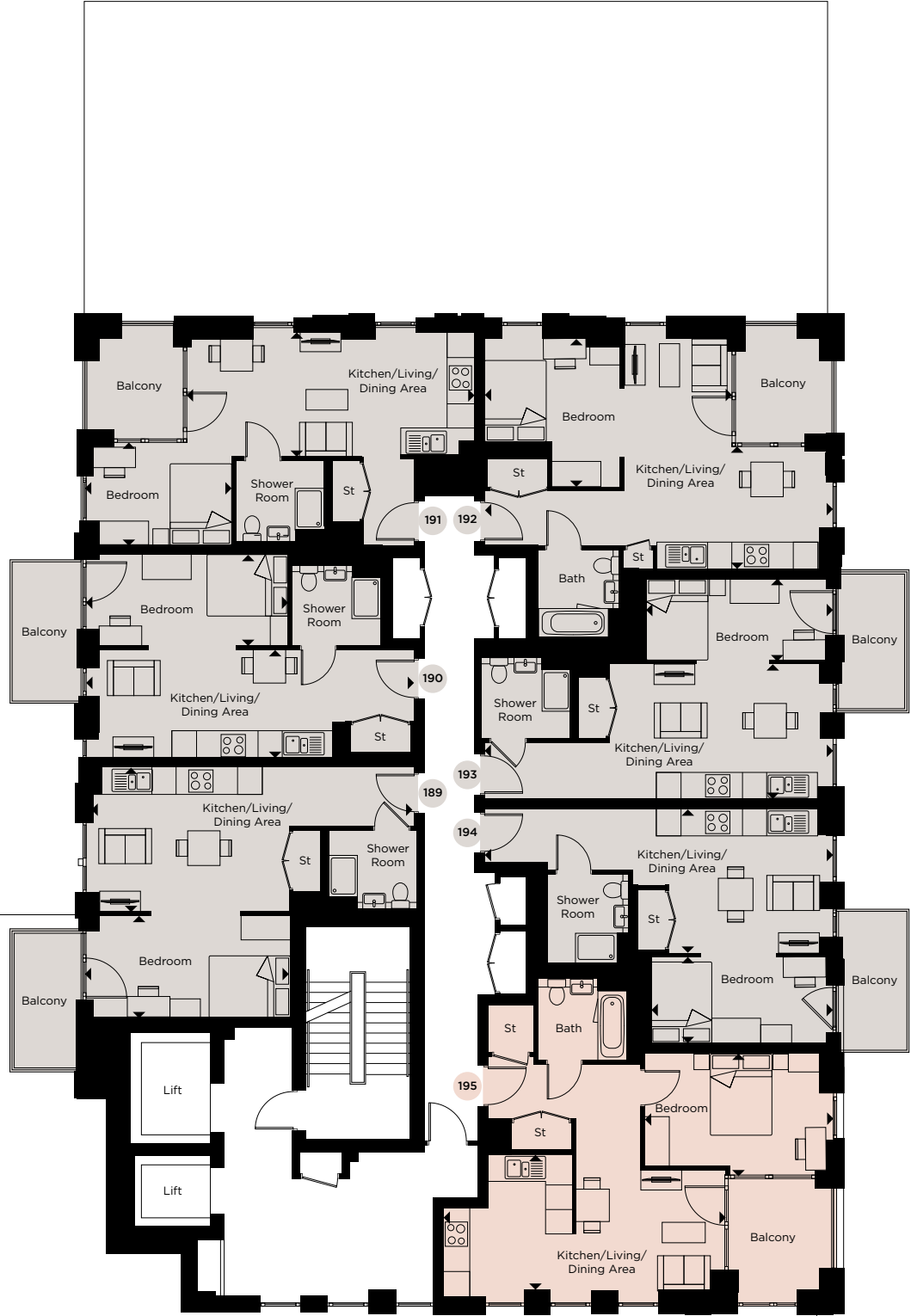
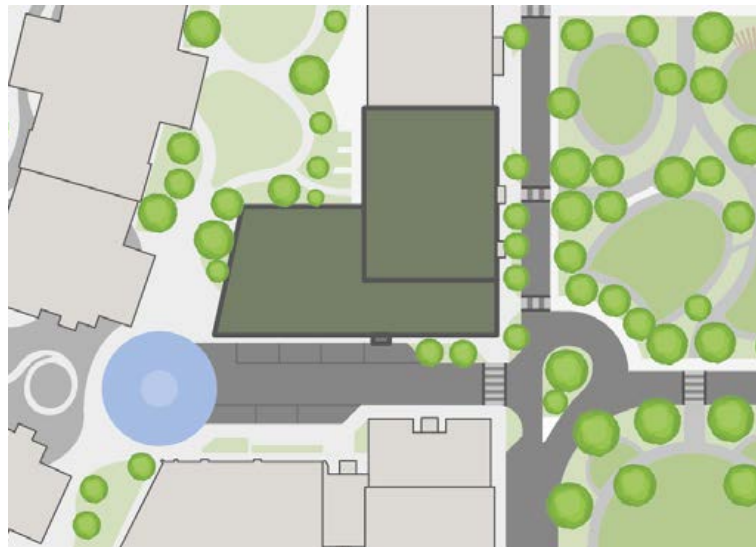
Total Area
50.6 sq. m. 545 sq. ft.



St - Store

The floorplans provided are intended to only give a general indication of the proposed floor layout and are not drawn to scale. Measurements are given to the widest point, are approximate and given as a guide only. Unless specifically incorporated in writing into the sales contract the specification is not intended to form part of any contract or warranty.

Floor 20



STUDIO

189

Kitchen/Living/Dining Area
7.83m × 3.49m 25'8" × 8'11"

Bedroom
4.80m × 2.45m 15'9" × 8'1"

Total Area
40.4 sq. m. 435 sq. ft.

192

Kitchen/Living/Dining Area
5.61m × 4.90m 18'5" × 16'1"

Bedroom
3.58m × 3.31m 11'9" × 10'10"

Total Area
44.4 sq. m. 478 sq. ft.

190

Kitchen/Living/Dining Area
7.68m × 2.58m 25'2" × 8'6"

Bedroom
4.60m × 2.21m 15'1" × 7'3"

Total Area
37.2 sq. m. 400 sq. ft.

193

Kitchen/Living/Dining Area
5.11m × 3.27m 16'9" × 10'9"

Bedroom
4.36m × 1.97m 14'4" × 6'6"

Total Area
37.9 sq. m. 408 sq. ft.

191

Kitchen/Living/Dining Area
6.89m × 3.02m 22'7" × 7'3"

Bedroom
3.38m × 2.37m 11'1" × 7'9"

Total Area
38.5 sq. m. 414 sq. ft.

194

Kitchen/Living/Dining Area
4.48m × 3.48m 14'9" × 11'5"

Bedroom
4.25m × 2.08m 13'11" × 6'10"

Total Area
37 sq. m. 398 sq. ft.

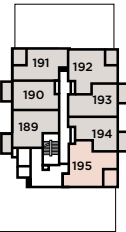
1 BEDROOM

195

Kitchen/Living/Dining Area
6.75m × 3.26m 22'2" × 10'9"

Bedroom
4.40m × 2.83m 14'5" × 9'4"

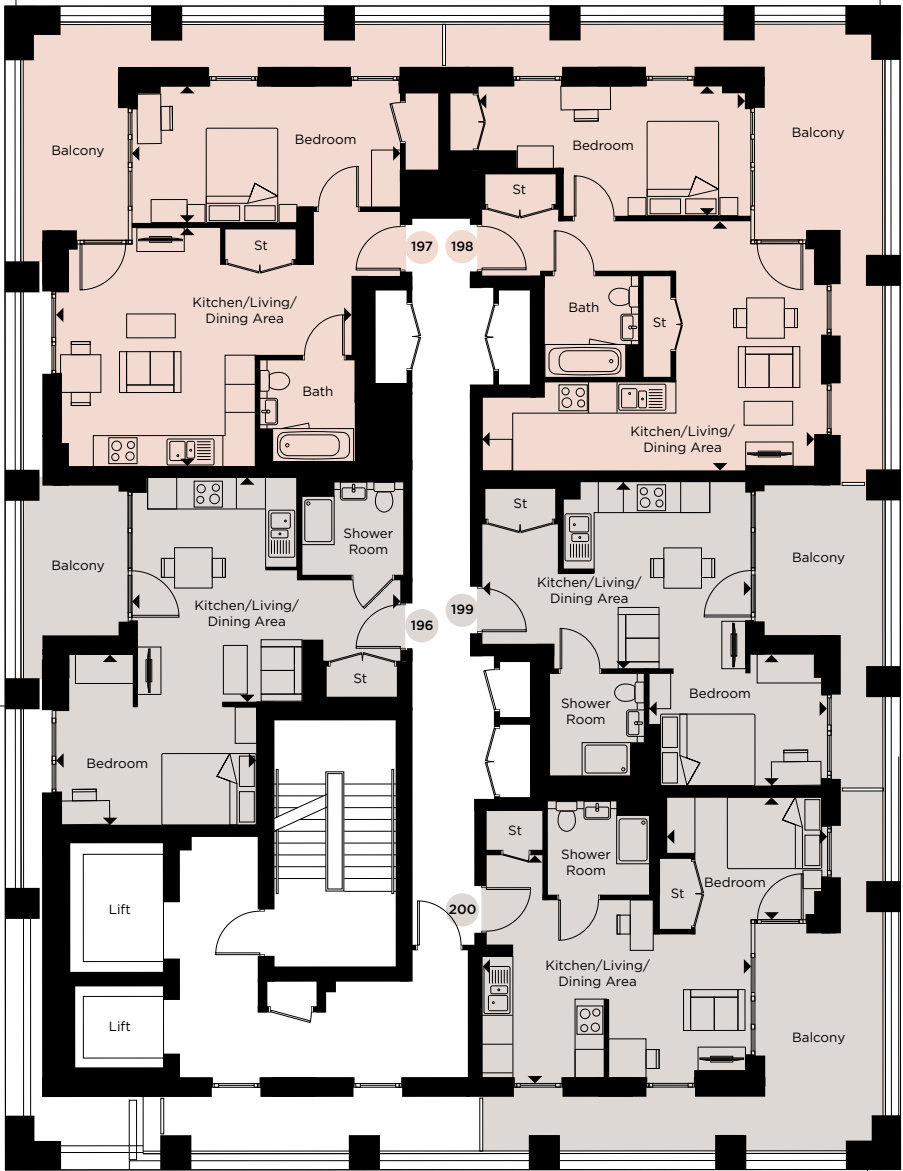
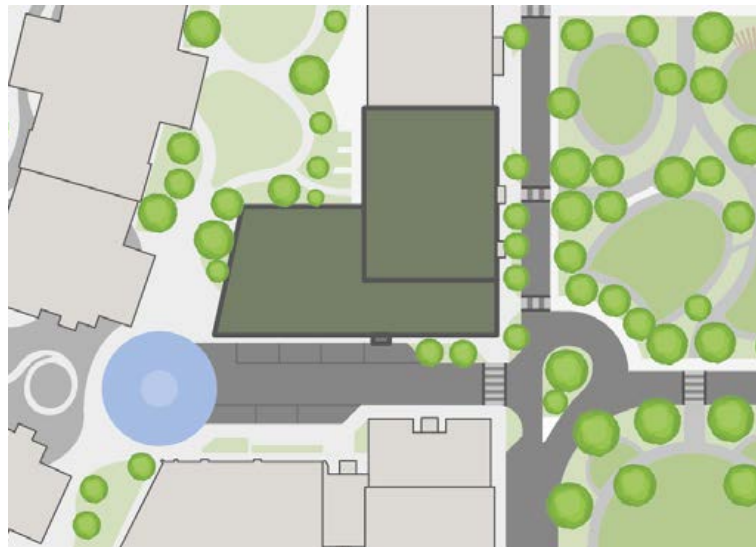
Total Area
50.6 sq. m. 545 sq. ft.



St - Store

The floorplans provided are intended to only give a general indication of the proposed floor layout and are not drawn to scale. Measurements are given to the widest point, are approximate and given as a guide only. Unless specifically incorporated in writing into the sales contract the specification is not intended to form part of any contract or warranty.

Floor 21



STUDIO

196

Kitchen/Living/Dining Area
4.68m × 3.32m 15'4" × 10'11"

Bedroom
4.07m × 3.53m 13'4" × 11'7"

Total Area
38.7 sq. m. 417 sq. ft.

199

Kitchen/Living/Dining Area
3.90m × 3.80m 12'10" × 11'7"

Bedroom
3.60m × 2.75m 11'10" × 9'1"

Total Area
37 sq. m. 398 sq. ft.

200

Kitchen/Living/Dining Area
5.53m × 3.70m 18'2" × 12'2"

Bedroom
3.23m × 2.42m 10'7" × 7'11"

Total Area
37 sq. m. 398 sq. ft.

1 BEDROOM

197

Kitchen/Living/Dining Area
5.00m × 4.06m 16'5" × 13'4"

Bedroom
5.50m × 2.85m 18'1" × 9'4"

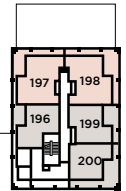
Total Area
52.1 sq. m. 561 sq. ft.

198

Kitchen/Living/Dining Area
7.12m × 5.22m 23'4" × 17'2"

Bedroom
6.30m × 2.72m 20'8" × 8'11"

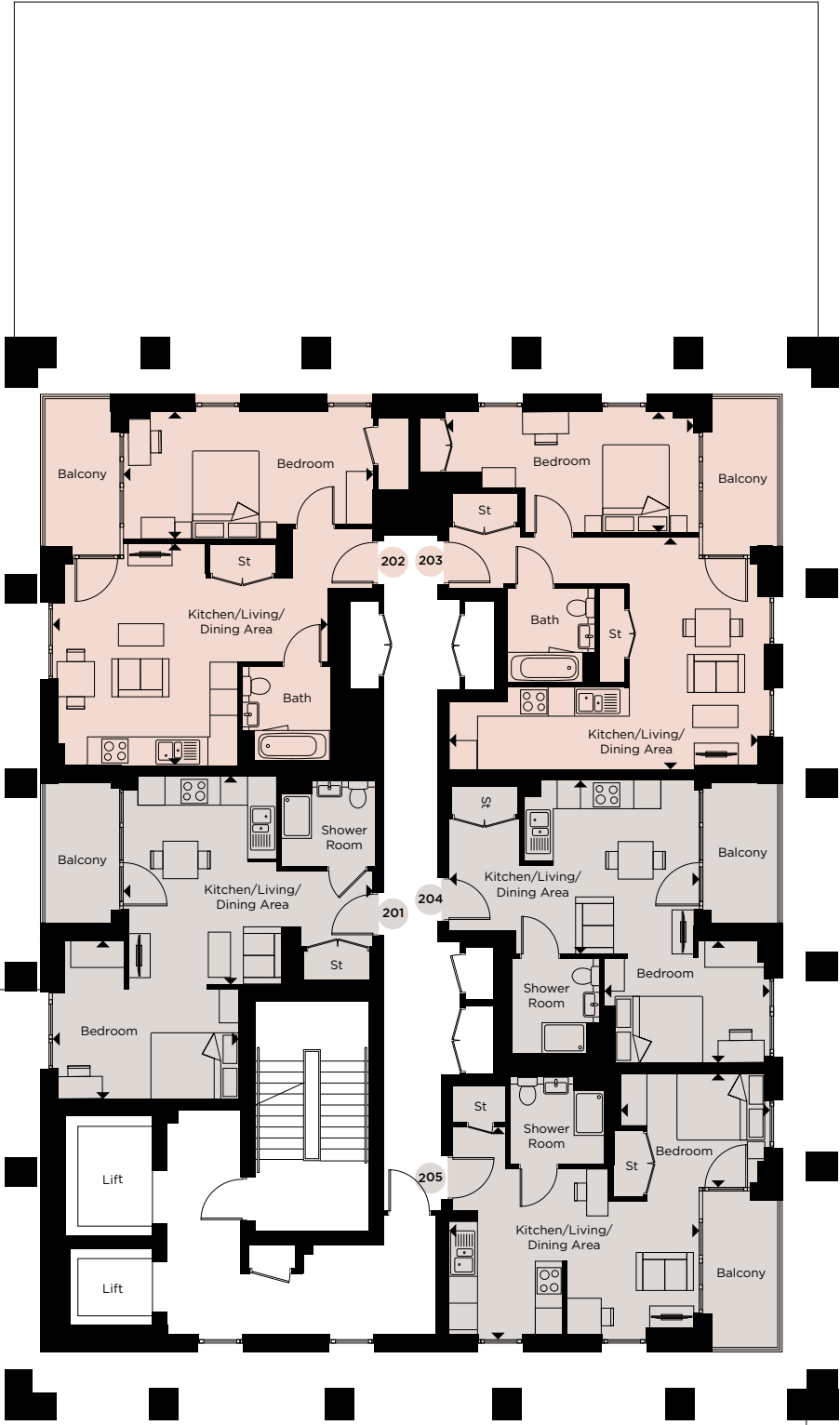
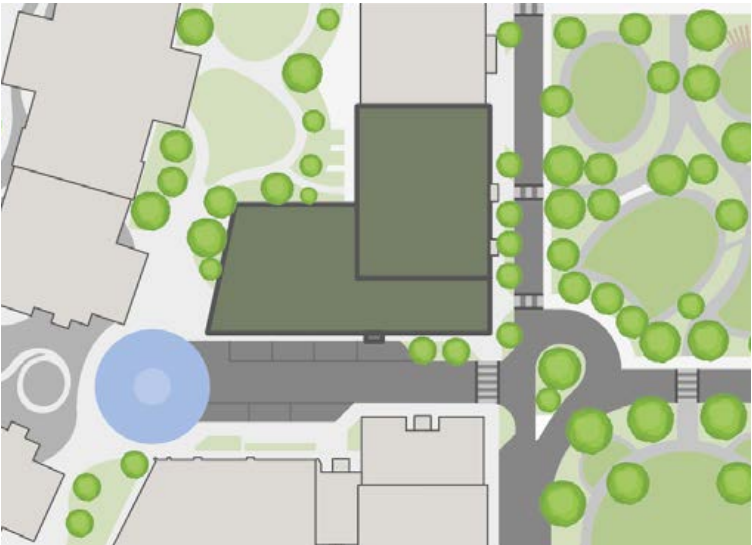
Total Area
50.6 sq. m. 545 sq. ft.



St - Store

The floorplans provided are intended to only give a general indication of the proposed floor layout and are not drawn to scale. Measurements are given to the widest point, are approximate and given as a guide only. Unless specifically incorporated in writing into the sales contract the specification is not intended to form part of any contract or warranty.

Floor 22



STUDIO

201

Kitchen/Living/Dining Area
4.68m × 3.85m 15'4" × 12'8"

Bedroom
4.03m × 3.53m 13'3" × 11'7"

Total Area
38.7 sq. m. 417 sq. ft.

204

Kitchen/Living/Dining Area
3.90m × 3.80m 12'10" × 12'6"

Bedroom
3.60m × 2.72m 12'10" × 8'11"

Total Area
37 sq. m. 398 sq. ft.

205

Kitchen/Living/Dining Area
5.44m × 3.70m 17'10" × 12'2"

Bedroom
2.62m × 2.42m 8'7" × 7'11"

Total Area
37 sq. m. 398 sq. ft.

1 BEDROOM

202

Kitchen/Living/Dining Area
5.00m × 4.06m 16'5" × 13'4"

Bedroom
5.50m × 2.85m 18'1" × 9'4"

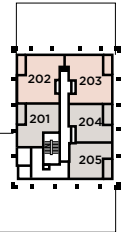
Total Area
52.1 sq. m. 561 sq. ft.

203

Kitchen/Living/Dining Area
7.12m × 5.22m 23'5" × 17'2"

Bedroom
6.18m × 2.73m 20'4" × 8'11"

Total Area
50.6 sq. m. 545 sq. ft.



St - Store

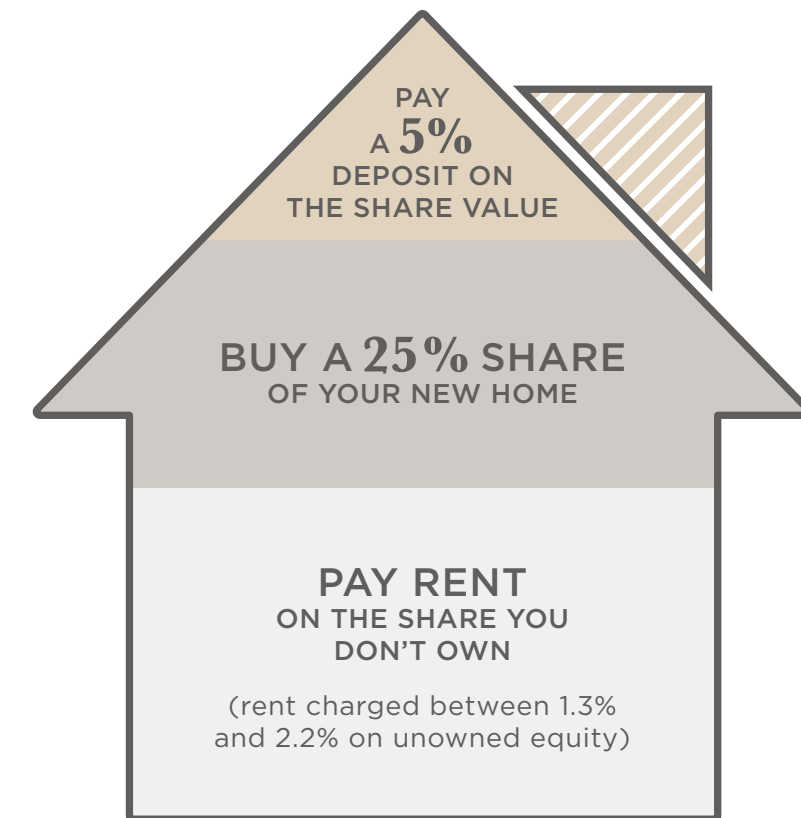
The floorplans provided are intended to only give a general indication of the proposed floor layout and are not drawn to scale. Measurements are given to the widest point, are approximate and given as a guide only. Unless specifically incorporated in writing into the sales contract the specification is not intended to form part of any contract or warranty.

YOUR STEP ONTO
THE PROPERTY
LADDER WITH

Shared Ownership

This home ownership scheme allows you to buy an initial share in your home and rent the remaining share. Over time, you can then buy more shares in your home until you own the full 100%.

How Shared Ownership Works



EXAMPLE BREAKDOWN OF A STUDIO APARTMENT

FULL MARKET VALUE

£505,000

PAY A 5%
DEPOSIT ON THE
SHARE VALUE

£6,313

BUY A 25% SHARE
OF YOUR NEW
HOME

£126,250

PAY SUBSIDISED
RENT ON THE SHARE
YOU DON'T OWN

£694

PER MONTH

FAQs:

Q: How does Shared Ownership work?

The Shared Ownership scheme is simple. You buy an initial share of between 25% and 75% of the home's full value and pay a subsidised rent on the remainder. You may purchase further shares (up to 100%) as your circumstances change, should you choose to.

Q: Do I need to live or work in the area?

Priority will be given to people who live or work in the London Borough of Hammersmith and Fulham for a period following release. Thereafter you do not need to live or work in the Borough to be able to purchase a home.

Q: How do I know what percentage I can purchase?

You can purchase any share from 25% to 75% of the initial purchase price. You will be asked to speak to a financial advisor to assess what share you can buy that is both affordable and sustainable.

Q: Will I need a deposit?

Yes, you still need a deposit, but only on the percentage of the property you are buying. Mortgage deposits can often be from 5% of the share value.

Q: Is it cheaper than renting?

Shared Ownership can be cheaper than renting privately as the mortgage cost and low rent usually add up to less than the equivalent rental payments to a landlord.

Q: What if I already have a home?

If you already own a property you would need to have confirmed the sale of your home when you apply to buy via Shared Ownership. Your application would be assessed based on your housing need for you to be considered for Shared Ownership.

Q: Can I buy a property on my own?

You can also use Shared Ownership to buy alone or with another person as long as your joint incomes don't exceed the maximum earnings bracket.

Q: How is the rent calculated?

On the share you don't own, we charge a rent of between 1.3% and 2.2%, depending on which apartment you choose. Our Sales Consultant and your financial advisor can give you further details based on your specific circumstances.

YOU BOUGHT:

25%

SHARE OF YOUR
NEW HOME

YOUR DEPOSIT:

5%

DEPOSIT ON THE
SHARE VALUE

Q: Can I buy additional shares in the property?

Yes, you can. This is known as "staircasing". When you buy more shares in your home, your home is revalued and you buy the shares at the current market value, at the time you are buying the shares. You can staircase up to 100%.

Q: Can I rent out my property?

You cannot grant an assured shorthold tenancy on a Shared Ownership property. If you want to get a lodger you can, however, you need to be able to afford to purchase the home without any assistance.

Q: Will I have to pay Stamp Duty?

When you buy a share in one of our homes you will have to pay a Stamp Duty Land Tax (SDLT). We advise you consult your Solicitor as to the amount payable at the point of your legal completion.

There are two ways to pay on a newly built (new Lease) property. Making a

one-off payment based on the total market value of the property or paying any SDLT due in stages. If you decide to make a one-off payment upfront this is known as making a "market value election". If you choose to pay SDLT in stages then you pay SDLT on the initial purchase amount. Should you choose to pay SDLT in stages, you will not have to make any further payments until you own more than an 80% share of the property.

Q: What if I want to sell my property?

When you want to sell your Shared Ownership home, Legal & General Affordable Homes has a time period specified within your lease to offer the property to another eligible shared owner. If we are unable to source a suitable purchaser in this time, you can put the property on the open market.

Q: How will I pay my rent?

Legal & General has appointed a Management Provider, Optivo, to manage your rental account and will collect the rent on our behalf. They will be in touch with more information nearer the time of completion.

Q: Who will manage my property and the communal areas of the building?

Our Management Provider, Optivo, will manage your property. They are your first point of contact for any queries about your home. They will collect rent and service charges, and help you if you want to staircase or sell. They will also oversee the work of Rendall & Rittner, who have been appointed by Berkeley Homes to carry out the management and maintenance of the building and communal areas, on behalf of all White City Living residents.

Q: What is the length of the lease?

The lease is for 250 years.

Q: Can I decorate and make improvements to my home?

Yes, you don't need our permission for decorating or simple repairs, however, you would need to get permission for larger works to ensure it does not affect the structure of the building.

Get in touch

Contact our sales team

T: 020 3925 9050

landgah.com/acer-apartments

Our friendly sales team will be able to assist you in selecting and reserving your new home.



ABOUT US

There is a shortage of affordable housing in the UK, especially in places where people prefer to live. The high level of deposit required to buy a home outright means many people can't afford to access a new home and are stuck renting.

Legal & General Affordable Homes was created to make a real difference to the number of affordable homes available in England.

Our purpose is to increase the supply of affordable housing by investing long-term institutional capital to build more affordable homes for those that need them.

We are a subsidiary of Legal & General Capital who invest in key sectors where there has previously been a shortage of investment and innovation. Our sister companies, such as CALA Homes and Legal & General Modular Homes are testament to the commitment Legal & General are making to housing provision, innovation and environmental sustainability in the UK.

We look forward to welcoming you as a Legal & General customer and helping you build your future at The Acer Apartments.

1

Quality

We aim to bring you the best possible experience in every aspect of your new home. That's in location, design, specification, environment and, above all, value.

2

Customer Service

We're committed to providing first-class customer service, from the moment you first speak with us to when you open the door of your new home in one of our developments.

3

Sustainability

We work to minimise the environmental impact of what we do. That means reducing carbon emissions, using renewable materials and following sustainable design and building processes.

How to find us

We are located on Fountain Park Way, which is a 2-minute walk from White City or Wood Lane tube stations along Wood Lane.

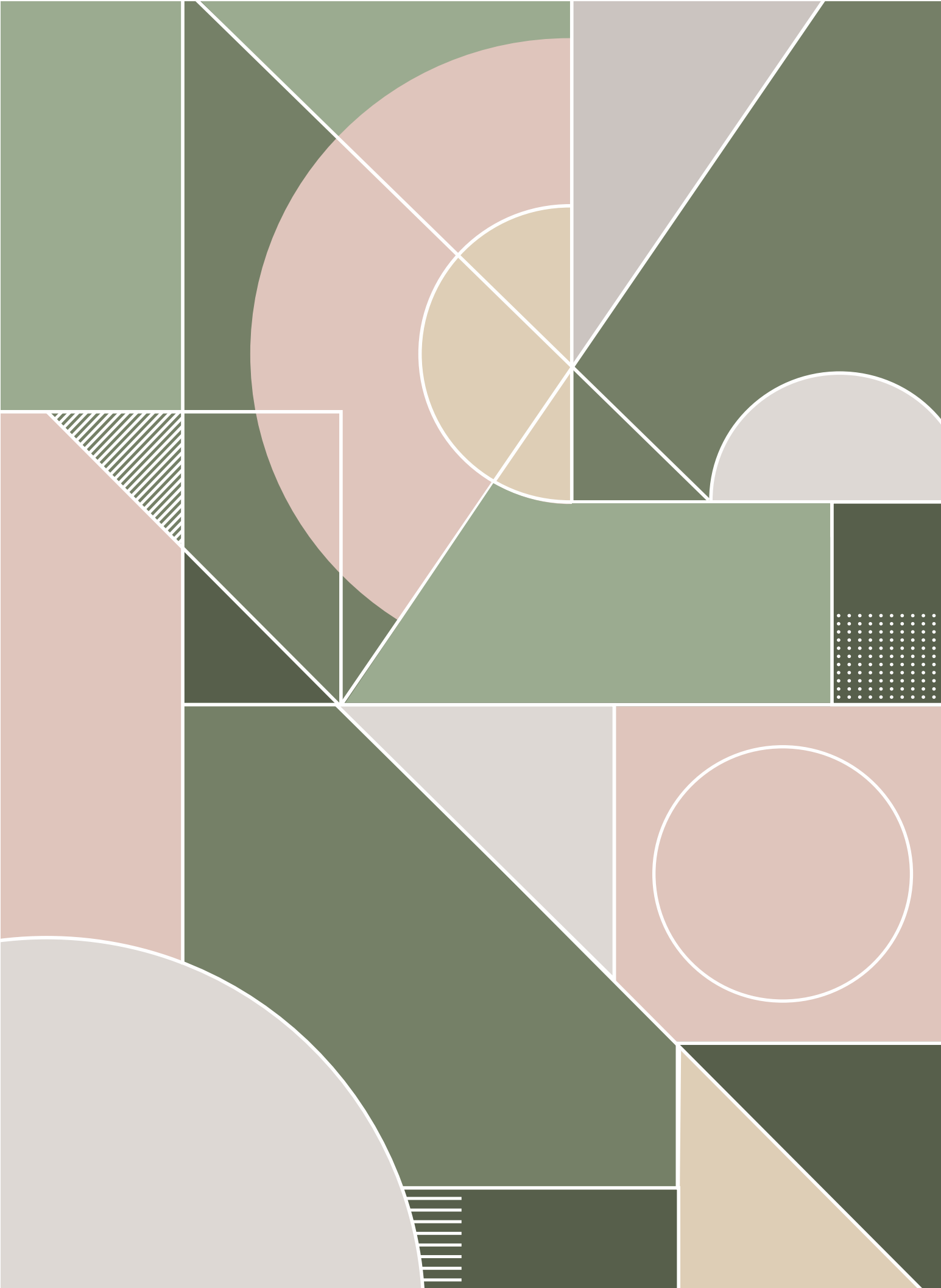
The Acer Apartments at White City Living

T: 020 3925 9050

landgah.com/acer-apartments



Legal & General Affordable Homes terms and conditions apply. All content within this document is indicative only. Legal & General Affordable Homes reserves the right to make any changes at any time. Please speak to a member of our Sales Team for up-to-date information when reserving your new home. Information is correct at the time of going to broadcast. Maps not to scale. Journey times are taken from [google.co.uk/maps](https://www.google.co.uk/maps) and [tfl.gov.uk](https://www.tfl.gov.uk) and are approximate only. Distances are taken from [google.co.uk/maps](https://www.google.co.uk/maps) and are approximate only. Shared Ownership - Terms and conditions apply. This scheme is subject to status and fitting criteria. Minimum and maximum share values will apply and rent is payable on the unsold share. February 2022.



THE ACER APARTMENTS

AT

WHITE
CITY
LIVING

The Acer Apartments, 54 Wood Lane, London W12 7RQ

Tel: 020 3925 9050

landgah.com/acer-apartments

