



ANTHOLOGY STRATFORD MILL

A guide to your new
Home and Neighbourhood



CONTENTS

Welcome to Stratford Mill	04
Built from London	06
Welcome to London	08
At a glance	10
Welcome to Stratford	12
Eating & drinking	14
Schools & education	16
Sports & activites	18
Entertainment & culture	20
Out & about	22
Getting around	24
Transport	26
Stratford's finest	28
The history of the area	30
Stratford Regeneration Masterplan	32
Anthology Stratford Mill	34
The homes	38
Lounge & balcony	40
Kitchen	42
Master bedroom & en-suite	44
Entrance & hallway	46
Bedroom	47
Bathroom	48
Specification	50
Did you know?	52
Our promise	53
Contact	54



Photography of an Anthology show apartment



This image is for illustrative purposes only

Welcome to Stratford Mill

A note from Anthology's
(Part of Lifestory) Chris Powell

Welcome to the next chapter from Lifestory. We are excited to be creating another development of Anthology new homes in Stratford that will form a key part of the wider regeneration of this area.

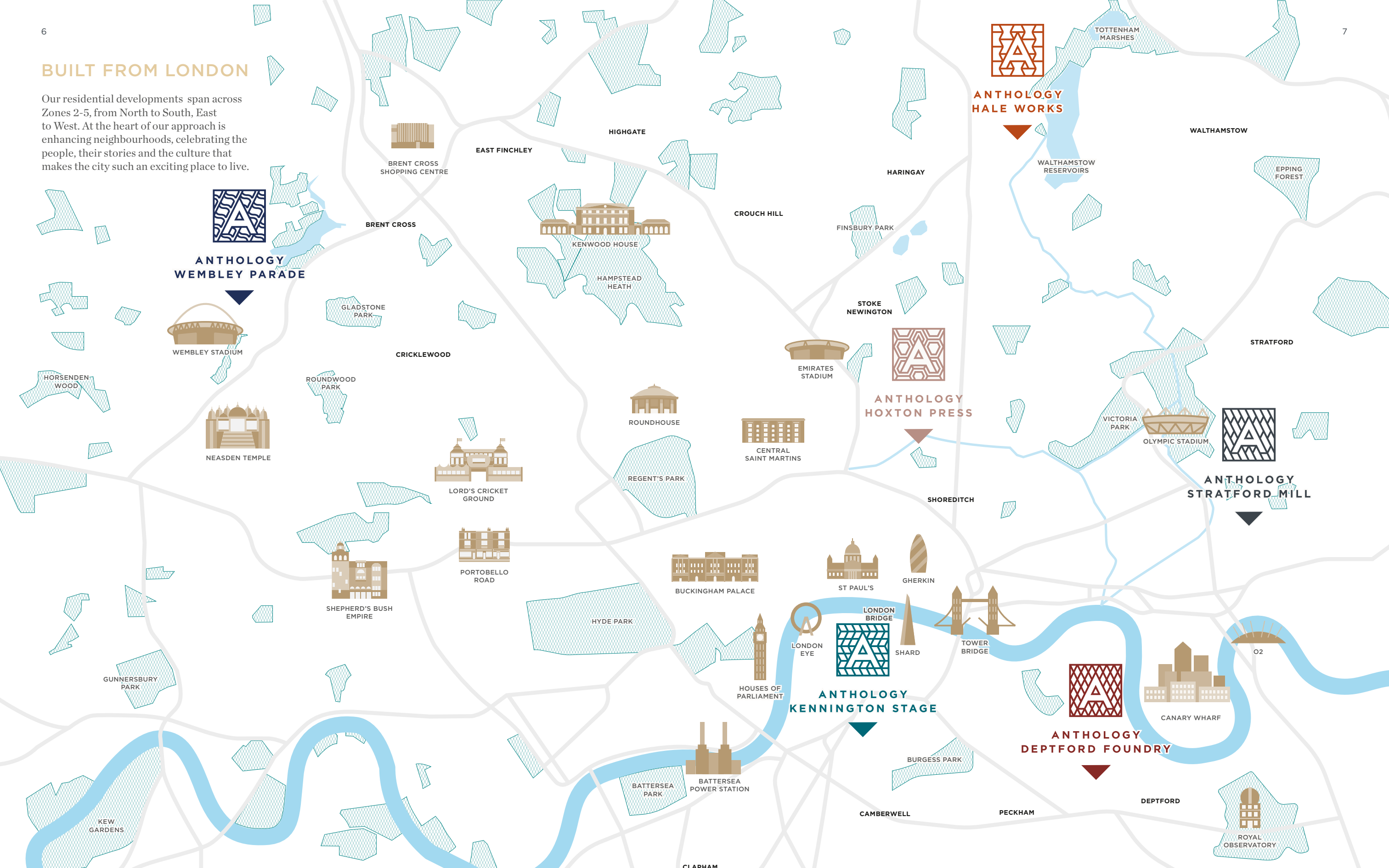
Stratford Mill will become a new neighbourhood in East London, located on the canal and close to the Queen Elizabeth Olympic Park. Our back garden is a vastly transformed space comprising waterways,

landscaped parkland, leisure, shopping, frequent and fast rail links and sporting facilities originally created for the London 2012 Olympic Games. A brand-new destination for London is emerging with world-class culture, sport and education at its heart.

Chris Powell
Regional Operations Director, Lifestory

BUILT FROM LONDON

Our residential developments span across Zones 2-5, from North to South, East to West. At the heart of our approach is enhancing neighbourhoods, celebrating the people, their stories and the culture that makes the city such an exciting place to live.





King's Cross / St Pancras



Southbank Centre

WELCOME TO LONDON

London is an open place that continues to attract people from around the world and of all backgrounds. It is the contrasts and combinations that make this city the exciting place it is. The multicultural population leaves its traces all over the ever changing cityscape and its diversity is visible in buildings and landmarks, both old and new. At Lifestory, we celebrate this spirit of change. We value the legacy created in the past and hope to write our own history today for future generations to carry on.



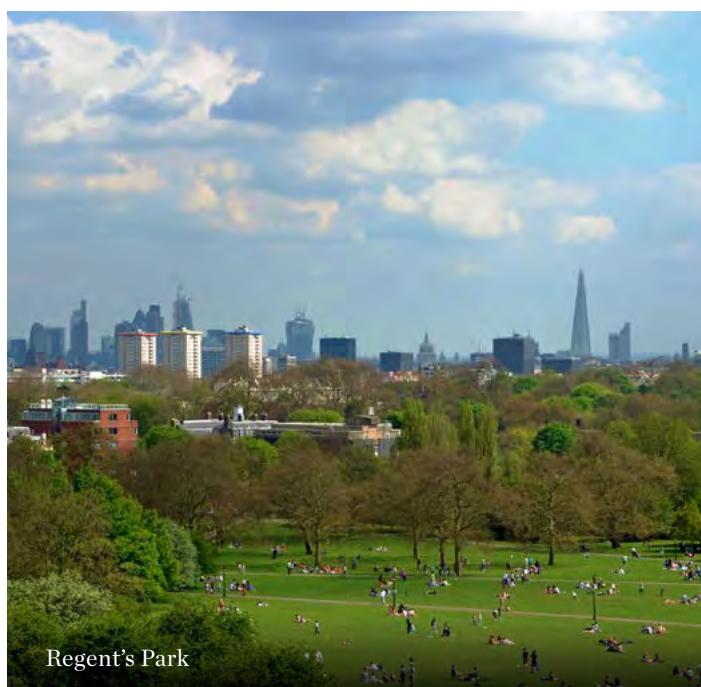
View of Cityscape



Regent Street



Houses of Parliament



Regent's Park



Buckingham Palace



Paddington Station

The grand and the quaint, the modern and the traditional, the quiet and the vibrant. London tells tales of past and future at every corner.

AT A GLANCE

In the heart of one of East London’s most vibrant and international neighbourhoods, Anthology Stratford Mill forms part of an outstanding regeneration project created by the legacy of the Olympic Games. Set amongst a thriving local community, the rest of the city is within easy reach thanks to frequent and fast rail links into Canary Wharf, the City, West End and Europe from nearby Stratford and Stratford International stations.



WELCOME TO
STRATFORD

Since its transformation for the London 2012 Olympics, Stratford has made its name as East London’s new centre for retail, dining, culture, and of course sports. Surrounded by landscaped parks and waterways, you will find world class sporting and leisure facilities each with their own striking contemporary architecture, from the wave shaped roof of the Aquatics Centre to the winding coils ArcelorMittal Orbit.

Shoppers flock to Westfield Stratford City, the largest urban shopping and leisure destination in Europe, while independent restaurants, breweries and theatres provide the backdrop for dining and entertainment.



London Stadium



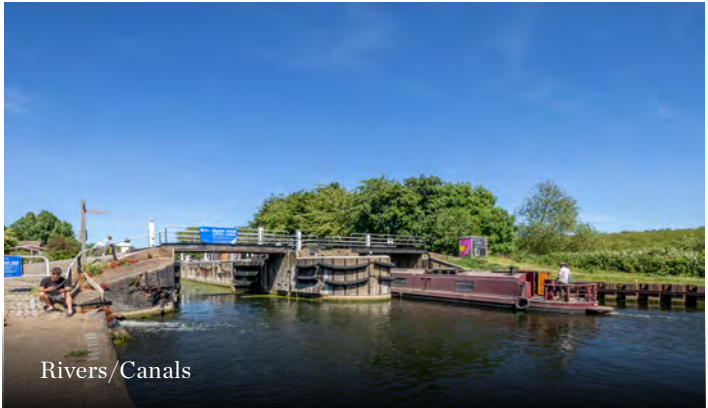
Westfield



Number 90 Bar & Kitchen



Crate Brewery & Pizzeria



Rivers/Canals



London Aquatic Centre



Formans Riverside



Signorelli



Pitch



Mexicasa



Sawmill Cafe and Restaurant



EATING & DRINKING

Stratford is home to an array of international dining options from Mexican or Modern European to Thai and seasonal British menus. Take a stroll to canal-side bar and restaurant Number 90 to enjoy great locally sourced dishes and infused cocktails. Their events programme also celebrates local and international music, art, comedy, film and theatre.

If fish is your thing then look no further than Forman’s Fish Island, renowned for its London Cure smoked salmon crafted in their smokehouse. Located just 100 metres away from the London Stadium, the view is the perfect backdrop to your meal.



Smarty Pants Day Nursery



Manor Park Primary School



Sarah Bonnell School



SCHOOLS & EDUCATION

Stratford offers highly rated education providers across every stage of learning.

For little ones, Smarty Pants Day Nursery has been running for over 23 years and was rated Outstanding by Ofsted in June 2017. Baby Sensory Iflord & Stratford offers award winning classes to introduce babies to a world of sensory exploration and learning.

Manor Primary School sits within the top 3% of schools in England and is a top 10 school in Newham for pupil progress. Ranelagh Primary School is one of the founding schools of The Tapscott Learning Trust, focused on providing the best possible quality education and the needs of the local community. Carpenters Primary School and Gainsborough Primary School are also well-regarded, inclusive schools in the area.

Currently situated in one of Stratford's landmark mills is East London Science School, a secondary school committed to providing an academic education for all, regardless of background or ability. Sarah Bonnell School is one of the longest running girls schools in England. Eastlea Community School is a community school with excellent study facilities for secondary students.

There are a wide range of colleges and sixth form colleges in the area, including London Academy of Excellence, vocational college Newham Training and Education Centre and the Building Crafts Academy.

University Square Stratford is a major new university campus in partnership with Birkbeck, University of London and the University of East London. The University of East London Stratford Campus is based in and around University House, a Grade II* listed building.



University Square of Stratford



SPORTS & ACTIVITIES

For sporting, athletic and aquatic facilities and fun activities, Stratford is unrivalled. Developed for the London 2012 Olympic and Paralympic games, the world class facilities in the Queen Elizabeth Olympic Park include the London Aquatics centre housing not one but two Olympic sized pools, a range of diving boards, platforms and pools alongside a state of the art gym, a café and creche.

The London Marathon Community Track is the home to a number of athletics clubs and football clubs, offering floodlit track and field facilities and a full sized 11-a-side grass football pitch. The striking Copper Box Arena is a flexible indoor venue whether you want to keep fit at the gym, join a group exercise class or take part in activities in the state-of-the-art sports hall.

Whether you want to learn to cycle or fancy putting your cycling speed to the test, head to the Lee Valley VeloPark where everyone, from beginners to elite riders, is able to ride the track at this iconic venue.

For something a little more laid-back, head to The ArcelorMittal Orbit. Not only is it a sculpture created by world famous artist Anish Kapoor for the 2012 games, it has also been transformed to contain the world’s tallest and longest tunnel slide.



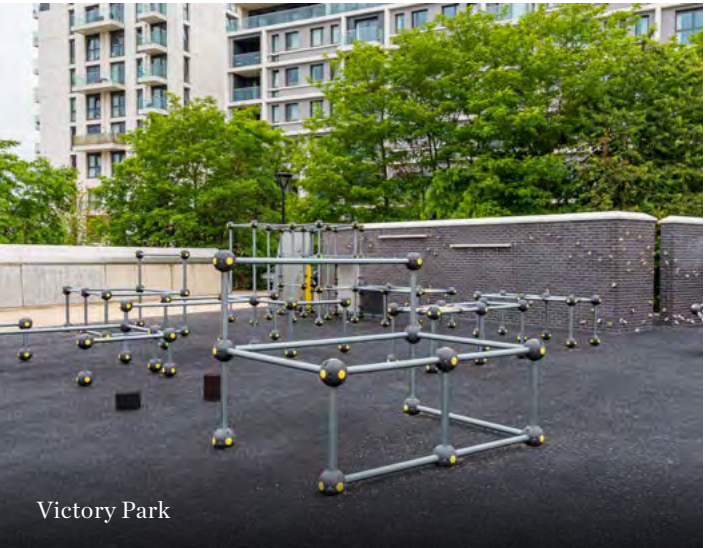
London Aquatic Centre



Lee Valley VeloPark



Arcelormitaal Orbit



Victory Park



London Marathon community Track



ENTERTAINMENT
& CULTURE

There is plenty to keep you entertained in Stratford, whether you enjoy theatre, film or history, or are looking for a playground for kids (or adults!).

Dating back to 1884, Theatre Royal Stratford East is steeped in stage history. Today it showcases new writing and ethnically diverse plays. The theatre works closely with the Refugees and the Arts Initiative, which supports professional artists who are seeking or have been granted refuge in the UK. Even when there is not a performance on, visitors are welcome to stop by the bar and enjoy the Caribbean dishes on offer.

To explore storytelling with little ones, Discover is the UK's first story centre for children aged 0-11 and their families. Their aim is to create a love of language, literature and stories through creative play spaces designed to inspire children's curiosity and imagination. Dedicated Story Builders guide children and families through the space and encourage them to create their own stories.

Tumbling Bay playground has a vast array of activities for kids including rock pools, sandpits, treehouses, wobbly bridges, slides and swings. Next door, the Timber Lodge community centre and cafe offers parents and kids a chance to relax and revive with a range of fresh, home-cooked food and drinks.

For the ultimate adult adventure playground, head to Roof East where players can curl, bowl or shuffle board in six action-packed gaming lanes, batting cages and crazy golf. If that is too high octane, then why not relax into some rooftop yoga, or kick back at a film screening while making the most of the bars and street food stalls.



The Mill House



Theatre Royal Stratford East



Roof East



Tumbling Bay Playground



Discover Childrens Story Centre



OUT & ABOUT

Stratford’s unique mix of green parks and calm waterways with leisure, retail and gyms mean it is perfect for exploring on foot. Take a walk through the Queen Elizabeth Olympic Park following the River Lea, City Mill River or Waterworks River to admire the world-famous contemporary architecture of the sporting facilities from a different angle every time.

There are plenty of other parks to explore in the area including Victoria Park, Stratford Park, Grove Hall Park and Wetlands Walk. If the weather calls for inside activities you can also keep fit at Gymbox Stratford, Anytime Fitness Stratford and Crossfit 1971.

Whether you are in search of some retail therapy or grocery shopping, Westfield Shopping Centre, Tesco Superstore, Waitrose and Morrisons are all handy nearby amenities.

If you fancy exploring further afield then Stratford has a number of stations to start your journey; read on to find out more.



Queen Elizabeth Olympic Park



The River Lea



Victoria Park



Green Spaces

Getting Around

With excellent transport links it is easy to get from Stratford to most places in London. Pudding Mill Lane station is a 2 minute walk away from Stratford Mill which has connections to Canary Wharf and Lewisham via the DLR line. Stratford station is a 20 minute walk away, with direct connections to London Bridge, Liverpool Street, Bank and London City Airport via the Central, Jubilee, DLR Lines.

For more information on the local area, please visit our [website](#).



TRAIN

PUDDING MILL LANE STATION Stratford <i>2 Minutes</i> Canary Wharf <i>11 Minutes</i> Lewisham <i>11 Minutes</i>	STRATFORD - JUBILEE LINE Canary Wharf <i>10 Minutes</i> London Bridge <i>16 Minutes</i> Waterloo <i>20 Minutes</i> Green Park <i>22 Minutes</i> Baker Street <i>27 Minutes</i>	STRATFORD - CENTRAL LINE Liverpool Street <i>9 Minutes</i> Bank <i>11 minutes</i> St Paul's <i>13 minutes</i> Holburn <i>16 minutes</i> Oxford Circus <i>19 minutes</i>	STRATFORD - LONDON OVERGROUND Hackney Wick <i>4 Minutes</i> Dalston Kingsland <i>10 Minutes</i> Highbury & Islington <i>14 Minutes</i> Camden Road <i>20 Minutes</i>
STRATFORD - DLR Canary Wharf <i>13 Minutes</i> London City Airport <i>14 Minutes</i>	STRATFORD INTERNATIONAL - NATIONAL RAIL St Pancras International <i>7 Minutes</i>	ELIZABETH LINE - CROSSRAIL* Liverpool Street <i>7 Minutes</i> Canary Wharf <i>8 minutes</i> Farringdon <i>10 minutes</i> Bond Street <i>15 minutes</i> Paddington <i>18 minutes</i> Heathrow T5 <i>48 minutes</i> Heathrow T4 <i>49 minutes</i>	

Source: Citymapper
*qualification when open



TRANSPORT

Stratford Mill has three stations within walking distance.

The closest is Pudding Mill Station which is directly linked to Stratford and Canary Wharf via the DLR line.

Nearby, Stratford station is connected to the Central, Jubilee, DLR, and London Overground lines, providing fast access to a wide variety of stations including London Bridge, Green Park, Bank and Oxford Circus. Once open, it will also benefit from the Elizabeth Line with high speed services into central London.

Trains from Stratford International station bring you to St Pancras International in just under 10 minutes.

The M25 is close by if you are driving, and TFL buses from Marshgate Lane provide day and night connections to nearby stations and amenities.

For more information on the local area, please visit our [interactive map](#).



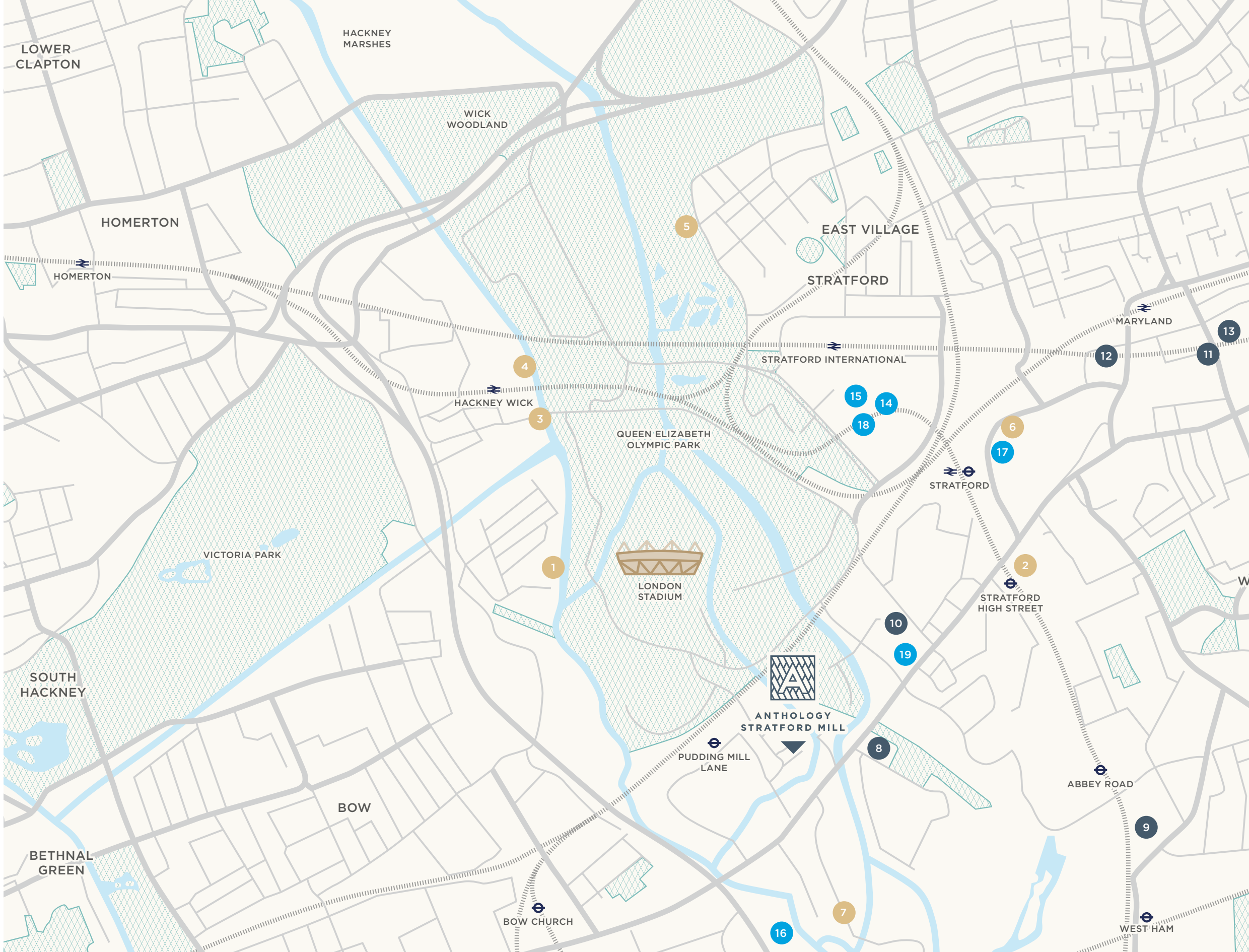
Whether you are looking for world class sporting facilities, local history, theatre performances, a day out for children, an outstanding school, the largest urban shopping destination in Europe, or to sample international cuisine, our neighbourhood has it. Here is just a sample of what the local area has to offer:

- 1 FORMANS
- 2 PITCH
- 3 CRATE BREWERY & PIZZERIA
- 4 90 BAR & KITCHEN
- 5 TUMBLING BAY PLAYGROUND
- 6 THEATRE ROYAL STRATFORD EAST
- 7 THE MILL HOUSE

- 8 SMARTY PANTS DAY NURSERY
- 9 MANOR PRIMARY SCHOOL
- 10 CARPENTERS PRIMARY SCHOOL
- 11 SARAH BONNELL SCHOOL
- 12 UNIVERSITY SQUARE STRATFORD
- 13 UNIVERSITY EAST LONDON

- 14 WESTFIELD SHOPPING CENTRE
- 15 WAITROSE
- 16 TESCO SUESTORE
- 17 STRATFORD SHOPPING CENTRE
- 18 GYMBOX
- 19 ANYTIME FITNESS STRATFORD

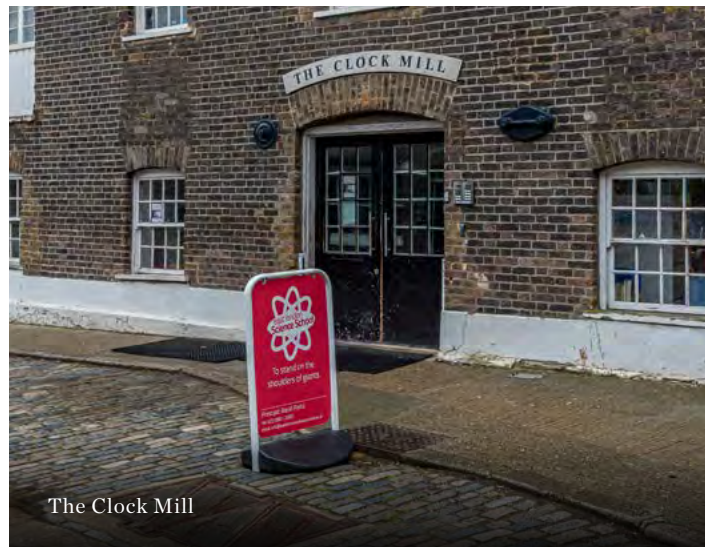
Maps are not to scale and show approximate locations only.



THE HISTORY OF THE AREA

The name Anthology Stratford Mill takes inspiration from the area's rich industrial history. Originally an agricultural community surrounded by marshlands, Stratford rapidly grew to be a hub for merchants and traders, noted for potato production. Taking advantage of the flowing waterways around Stratford, historically there have been many mills in the area from smelting works to glassblowing and windmills.

Today, the Three Mills area brings together history, culture and education. At the heart of the area is 3 Mills Studios, the largest film studio in central London. Next door you'll find the Grade 1 listed House Mill, originally built in 1776, it is the largest existing tidal mill in the world; visitors can join guided tours on Sundays to find out more about East London's industrial history. Finally, the Clock Mill is currently used as the temporary site of East London Science School.



The Clock Mill



House Mill

STRATFORD
REGENERATION
MASTERPLAN

Stratford is fast becoming the capital’s most desirable place to work, live and socialise, with the 2012 London Olympics claim that its most enduring legacy would be “the regeneration of an entire community for the direct benefit of everyone who lives there”.

Since the 2012 Olympic games and substantial investment in the area, there has been a shift in Stratford’s focus from industry and railways to more of a cultural and commercial hub. Today it is home to some of the country’s best sporting facilities, including London’s Aquatic Centre, the Velodrome and London’s biggest shopping centre, Westfield Stratford; as well as exciting residential developments including East Village, Glasshouse Gardens and Sugar House Island.

A £1.1 billion waterside cultural quarter due to open in 2023 is being developed with a mix of cultural, scientific and education institutions, green spaces and homes.



VISION

The 2012 Olympic legacy has turned East London into the fastest-growing area in the South East, according to London Mayor Sadiq Khan; with the boom in new jobs expected to continue to 2030. Approximately 3,000 homes will be built across Stratford Waterfront, Pudding Mill and Rick Roberts Way over the next 12 years.

East Bank at the Park is set to create 2,500 jobs and £1.5 billion of economic investment. The Legacy Corporation’s mission remains to use the opportunity of the London 2012 Games and the creation of Queen Elizabeth Olympic Park to change the lives of people in East London by developing an inspiring and innovative place where people want to live, work and visit.

Four new schools have been built to provide the much-needed infrastructure to support these new neighbourhoods.

The area is set to become a new cultural powerhouse with notable institutions including: London College of Fashion, University College London, the BBC, Sadler’s Wells Theatre, the V&A Museum and the American Smithsonian Institution set to open at the East Bank from 2023.

With frequent and fast rail links into Canary Wharf, the City, West End and Europe on our doorstep, along with good road networks and an International airport so close by, you will have one of the best-connected homes in London.

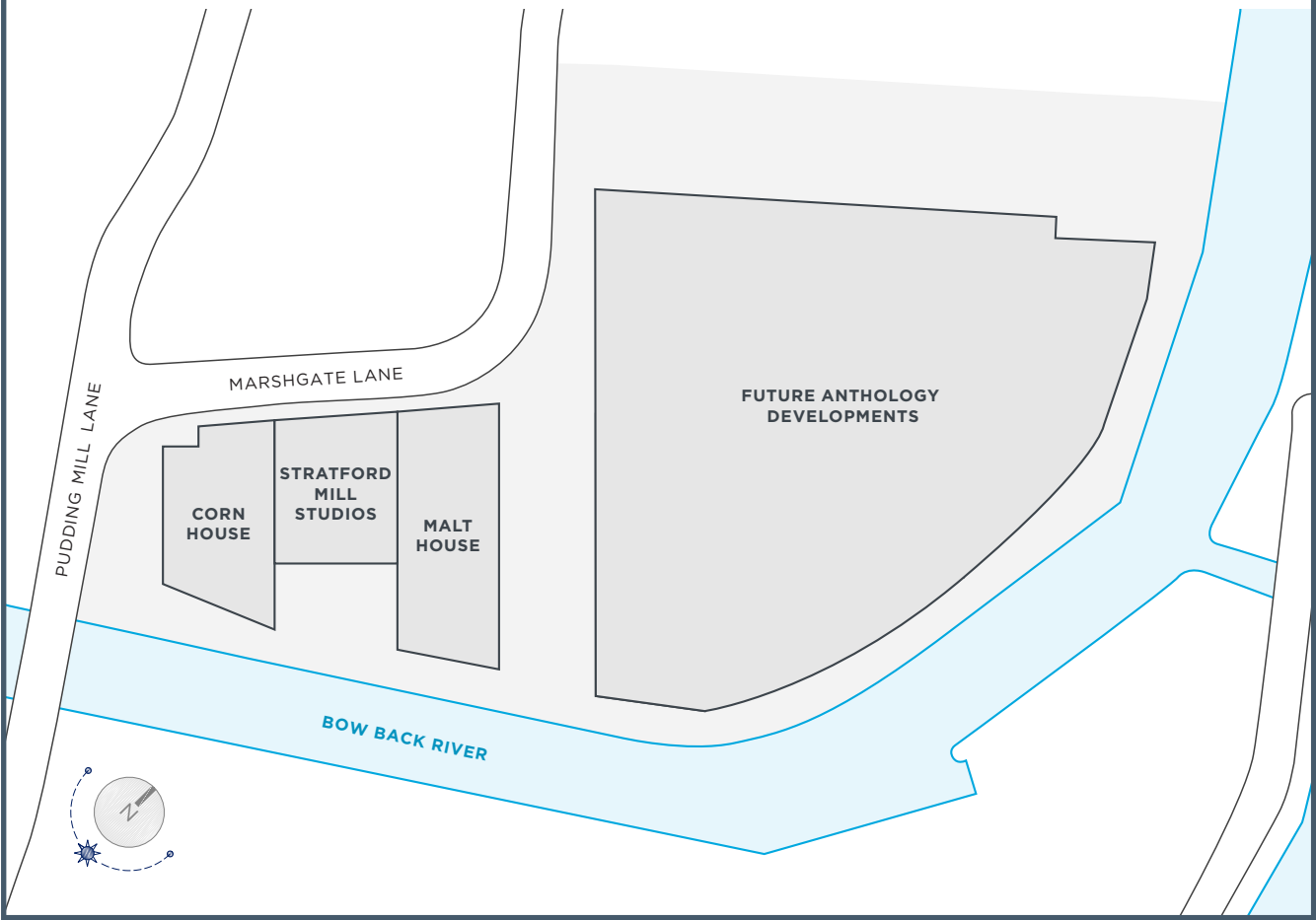
Anthology Stratford Mill

Located on Marshgate Lane, Phase 1 of Stratford Mill includes two buildings and a commercial space, Stratford Mill Studios.

Comprising of one, two and three bedrooms, there will be 75 homes in total, all featuring balconies.

Situated on the fourth floor you will find a roof garden with views overlooking the Bow Back River as well as the Olympic Park.

↑
⊖ PUDDING MILL LANE
2 MINS



Photography of an Anthology show apartment



This image is for illustrative purposes only

THE HOMES

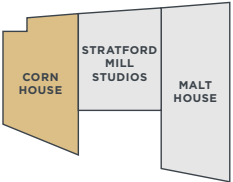
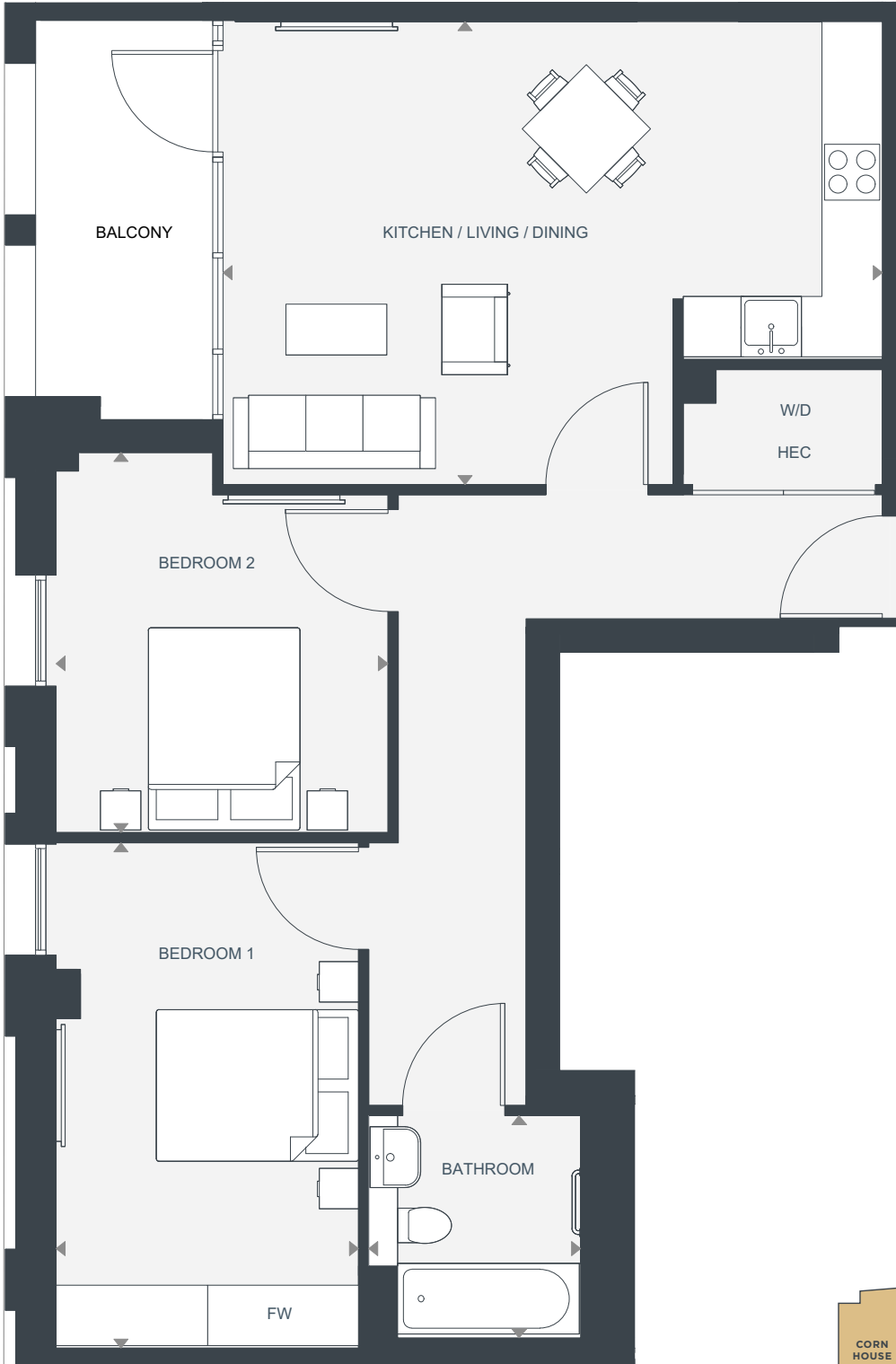
In our homes you will find generous, well thought out and contemporary spaces designed to take away daily stresses so you can focus on the important things.

Walk into a typical Stratford Mill two-bedroom home and you will discover a master bedroom, second bedroom and a spacious, open plan kitchen and living area that leads onto the balcony.

With plenty of integrated storage, clutter can be kept to a minimum.

KEY

- FW FITTED WARDROBE
- W/D WASHER/DRYER (INCLUDED)
- HEC HEATING, ELECTRICAL COMPONENTS

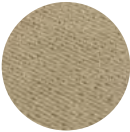


DIMENSIONS

TOTAL AREA	75.8 sq m / 816 sq ft
LIVING/DINING/KITCHEN	6525mm x 4850mm
MASTER BEDROOM	4995mm x 2990mm
BEDROOM 2	3760mm x 3280mm
BATHROOM	2200mm x 2100mm
BALCONY	5.63 sq m / 60 sq ft



KITCHEN, LOUNGE & HALL
Karndean limed cotton
oak vinyl flooring



BEDROOMS
Fitted broadloom carpets



BATHROOMS
Large format porcelain tiles

This image is for illustrative purposes only and accurate as of March 2021

LOUNGE & BALCONY

Each home at Stratford Mill offers a large private balcony with views of the Olympic Park, canal or communal areas, adjoining your lounge, to create a fluid space perfect for entertaining and open-plan living. Complete with a 5 amp lighting circuit, 2.5m ceilings and full-height doors, our homes have a light and airy feel which is perfect for hosting family and friends.

Photography of an Anthology show apartment





KITCHEN

Tailored to each home, the kitchens feature contemporary handleless joinery highlighted with under-cabinet LED lighting. Each comes fully fitted with a composite stone worktop and modern Siemens appliances including an integrated induction hob, oven, extractor fan, fridge-freezer and dishwasher.

Photography of an Anthology show apartment



MASTER BEDROOM & EN-SUITE

The bedrooms offer a cosy retreat with fitted carpets, a 2.5m ceiling and bespoke full height wardrobes that incorporate LED illumination, hanging rails and shelving to provide plenty of storage space.

Selected two bedroom apartments also offer fully tiled ensuites fitted with contemporary suites and a walk-in shower.

Photography of an Anthology show apartment



ENTRANCE & HALLWAY

Stepping from the carpeted communal areas, you are welcomed into your home through the hallway with luxury Karndean vinyl flooring and utility cupboards with electrics and a washer-dryer.

Photography of an Anthology show apartment



BEDROOM

Stratford Mill's two and three bedroom homes provide additional bedroom(s) offering a welcoming retreat with fitted carpets and enough space for wardrobes and a double bed.

Photography of an Anthology show apartment

BATHROOM

Lined with timeless large format porcelain floor and wall tiles, bathrooms include LED downlighting and an enamelled white steel bath perfect to unwind in. Suites are finished with contemporary white sanitaryware, a wall-mounted vanity cupboard with mirrored doors and shelving, and a chrome plated heated towel rail.

Photography of an Anthology show apartment



SPECIFICATION

KITCHEN

- Contemporary matt lacquer contemporary handle-less kitchen with soft close doors and cupboards
- Composite stone worktop and splash/back
- Under cabinet low energy LED feature lighting
- Integrated 4-ring flush induction hob with integrated self-circulating extractor fan by Siemens
- Integrated fan-assisted oven by Siemens
- Integrated dishwasher by Siemens
- Integrated fridge/freezer by Siemens
- Brushed stainless steel finish sink
- Integrated recycling bins

BATHROOM

- Enamelled white steel bath with fixed shower head and separate handheld shower
- Dark wood laminate bath panel
- Thermostatic wall mounted chrome bath/shower control
- Contemporary style basin and taps
- Composite stone vanity top
- Soft close dual flush WC
- Mirrored dark wood laminate cabinet and shelving unit
- Chrome plated heated towel rail
- Large format porcelain floor and wall tiles
- Shaver socket
- LED down lights

EN-SUITE

- Selected 2 bedroom apartments only
- Walk-in shower with glass screen and shower head
- Thermostatic wall mounted chrome shower control
- Contemporary style basin and taps
- Composite stone vanity top
- Soft close dual flush WC

- Mirrored dark wood laminate cabinet and shelving unit
- Chrome plated heated towel rail
- Large format porcelain floor and wall tiles
- Shaver socket
- Illuminated niche within shower

HALLWAYS

- Utility cupboard with heating and electrical components and washer dryer
- Karndeans luxury vinyl flooring

EXTERNAL FINISHES

- Private balconies and terraces
- Communal landscaped roof garden on fourth floor for exclusive use by Stratford Mill residents

INTERIOR FINISHES

- Karndeans luxury vinyl flooring to kitchen and living areas
- Fitted carpets in bedrooms
- Full height fitted wardrobes to master bedroom
- Double glazed floor to ceiling aluminium windows throughout
- Double glazed hinged door to balcony
- Contemporary brushed stainless steel door ironmongery throughout
- Matt white painted walls and ceilings
- Skirting and architraves in satin white finish
- Full height white painted interior doors
- 2.5m ceilings in living rooms and bedrooms

ELECTRICAL

- Terrestrial TV aerial socket in living room and bedrooms
- Pre-wired for BT and broadband

- Pre-wired for Sky with HD TV points to living room and bedrooms (subject to subscription taken out by purchaser)
- Freeview and DAB radio services also available
- BT phone line & data points to living room
- Centrally provided district heating and hot water with individual metering to each apartment
- Radiators throughout
- 13 amp power supply throughout
- 5 amp lighting circuit to living rooms
- Low energy downlights throughout
- LED lighting below kitchen cabinets
- White electrical sockets throughout
- Brushed steel electrical face plates in kitchen

SECURITY & SAFETY

- Centralised smoke extract system to all communal corridors
- Sprinkler system
- Mains powered smoke detectors with battery back-up
- Multi point locking apartment doors
- Video entry phone system
- Double glazed entrance doors to main entrance with fob access

COMMUNAL AREAS

- Large format tiling to ground floor entrance
- Carpet in hallways
- Painted ceilings and walls throughout
- Painted skirting and architraves in satin white finish
- Lift access to all residential floors
- Refuse store in basement
- Secure cycle storage in basement



Photography of an Anthology show apartment

DID YOU KNOW?

DEVELOPMENT NAME

Anthology Stratford Mill Phase 1

DEVELOPMENT ADDRESS

Marshgate Lane
Stratford
London

POSTCODE

E15 2NH

A DEVELOPMENT BY

Lifestory Group

We are a passionate team with a wealth of experience in creating high quality homes. We are dedicated to listening to our customers so that we can delight them with our service. Our homes are tailor made for each stage of your life, from first time buyers through to later living.

The Anthology brand creates residential developments in London, across Zones 2-5. At the heart of our approach is enhancing neighbourhoods, celebrating the people, their stories and the culture that makes the city such an exciting place to live.

ARCHITECT

Squire & Partners/Stride Treglown

LANDSCAPE ARTCHITECT

TPM Landscape

INTERIOR DESIGN

Claude Hooper
Love Interiors

ESTATE MANAGEMENT COMPANY

Rendall & Rittner

LOCAL AUTHORITY

London Borough of Newham/LLDC

TENURE

999 years

BUILDING INSURANCE

Premier Guarantee

GROUND RENT

1 Bed - £400

2 Bed - £550

3 Bed - £650

SERVICE CHARGE

Corn House - £3.53

Malt House - £3.63

CAR PARKING

Zero

RESIDENTIAL

2 buildings providing
75 homes.

Home type – No. of homes:

1 bedroom - 34

2 bedroom - 29

3 bedroom - 12

SPECIFICATION

Fully fitted kitchen with Siemens appliances, lacquered finish, Karndean flooring.

Contemporary style bathroom with dark wood accessories, heated towel rail, large porcelain floor and wall tiles and LED down lights.

Selected 2 & 3 bedroom apartments with en-suite bathrooms to master bedrooms. Fitted wardrobes in master bedroom.

Video entry phone system.

(See specification for further detail)

FACILITIES

Landscaped Gardens

Cycle Storage

Balconies or terrace access to all apartments

ANTHOLOGY SOLICITORS

Gateley PLC solicitors
3000 Cathedral Hill
Guildford
Surrey
GU2 7YL

Andy Wilson:
01483 577 091



Our Promise

GETTING TO KNOW EACH OF OUR CUSTOMERS PERSONALLY

We want to treat people as we wish to be treated ourselves. We listen to our customers and are committed to understanding their needs, so we can delight them with our service.

TAKING PERSONAL RESPONSIBILITY FOR OUR CUSTOMERS' NEEDS

Every one of us at Lifestory is personally responsible for fulfilling the needs of our customers. If a customer contacts Lifestory, the person who receives the contact will take responsibility for seeing that their questions are answered.

ACKNOWLEDGING AND REWARDING CUSTOMER LOYALTY

We believe that by understanding our customers and providing outstanding service, they will recommend us to their friends. When they do this, we will reciprocate with genuine appreciation.

CARING ABOUT OUR NEIGHBOURS

We take responsibility to create homes that enhance neighbourhoods for our customers and their neighbours to enjoy. As well as knowing our customers, we are committed to knowing the communities in which we work. We will strive to earn the trust of our neighbours and we want them to be able to openly credit the places we create.

TAKING CARE OF TOMORROW BY BEING SUSTAINABLE TODAY

We are committed to being sustainable and we know our customers want to be too. We will take the time to explain the sustainability features of the new homes we create and help our customers to live there in a sustainable manner.

CARING ABOUT THE LEGACY WE LEAVE BEHIND

When our customers buy a Lifestory home, they are contributing to a tale that will grow and create lasting value, both for themselves and for the community around them. We are conscious of the legacy we leave behind and we want to be known for creating outstanding places for people to live.

Steve Bangs
Regional Managing Director, Lifestory



ANTHOLOGY STRATFORD MILL

CONTACT OUR TEAM

—

stratfordmill@anthology.london

020 3936 3178

Part of **Lifestory**



@AnthologyLondon



facebook.com/AnthologyLondon



@AnthologyLondon

This brochure is not legally binding. Information and images in the brochure are indicative and are subject to change as design and construction takes place. When you buy an apartment from Anthology there will be a contract between you and us which will include the details your home. The contract will set out our rights and yours with regard to any changes that we need to make.