



# Swallowhurst

---

CRANLEIGH

A JOINT PARTNERSHIP DEVELOPMENT BOUGHT TO YOU BY



## THE EWHURST

# HOMES 1 & 2\*

4 bed detached house

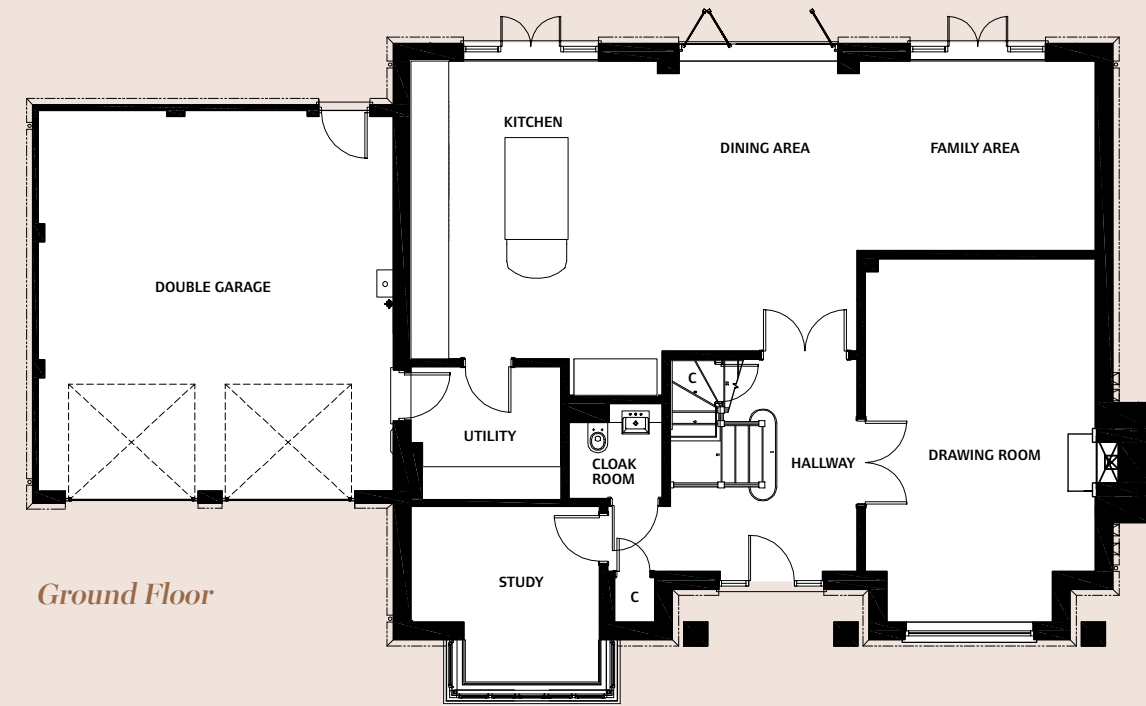


COMPUTER GENERATED IMAGE



THE SHOWGROUND

COMPUTER GENERATED IMAGE. FOR ILLUSTRATIVE PURPOSES ONLY. NOT TO SCALE.



Ground Floor



First Floor

C Cupboard  
AC Airing Cupboard  
W Wardrobe

Swallowhurst Call for more information  
Bookhurst Road  
Cranleigh **0844 417 5998**  
Surrey  
GU6 7DP [lindenhomes.co.uk/swallowhurst](http://lindenhomes.co.uk/swallowhurst)

**2685.4 SQ FT**  
**249.5 SQ M**

## Ground Floor

KITCHEN	5460 x 4610 mm	17'11" x 15'2"
FAMILY AREA	4370 x 3480 mm	14'4" x 11'5"
DINING AREA	5320 x 3580 mm	17'6" x 11'9"
DRAWING ROOM	6680 x 4220 mm	21'11" x 13'10"
STUDY	3460 x 3250 mm	11'4" x 10'8"

## First Floor

MASTER BEDROOM	4340 x 3970 mm	14'3" x 13'0"
BEDROOM 2	4270 x 4130 mm	14'0" x 13'7"
BEDROOM 3	4300 x 3030 mm	14'1" x 9'11"
BEDROOM 4	4630 x 2960 mm	15'2" x 9'8"

Computer Generated image shown not to scale. Finishes and materials may vary from those shown on a plot by plot basis and landscaping is illustrative only. The image does not represent any contractual offer on behalf of Linden Homes. Please ask your sales executive for specific details.

\* Home 02 is handed. Please note that all floorplans and dimensions are taken from architectural drawings and are for guidance only. Dimensions stated are within a tolerance of plus or minus 50mm. Overall dimensions are for guidance only. Please ask your Sales Executive for specific details.



# Swallowhurst

---

CRANLEIGH

A JOINT PARTNERSHIP DEVELOPMENT BOUGHT TO YOU BY



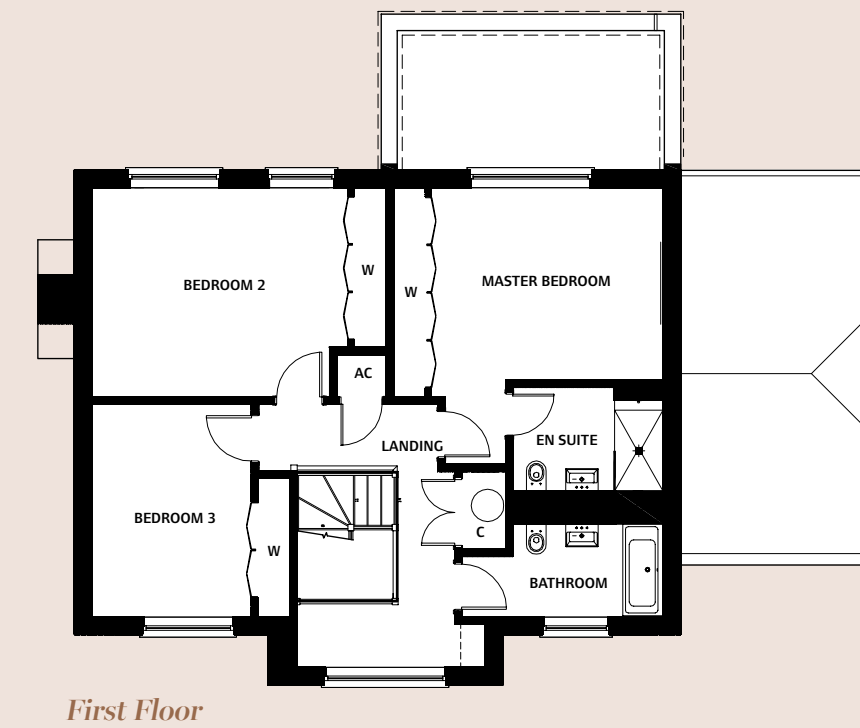
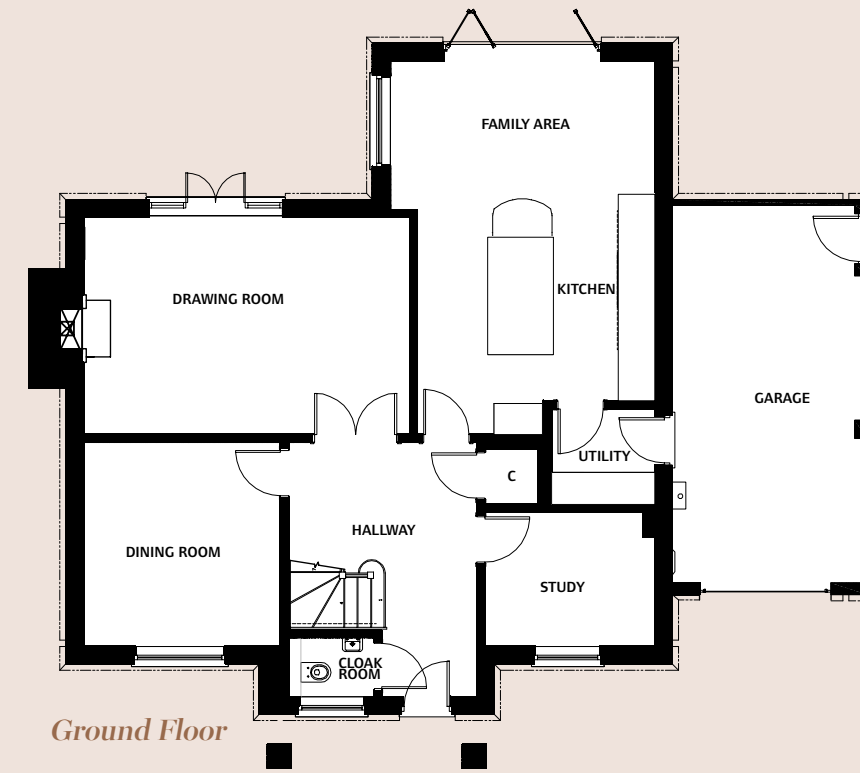
## THE BRAMLEY

# HOMES 3, 5 & 7\*

3 bed detached house



COMPUTER GENERATED IMAGE. FOR ILLUSTRATIVE PURPOSES ONLY. NOT TO SCALE.



C Cupboard  
AC Airing Cupboard  
W Wardrobe

2035.5 SQ FT  
189.1 SQ M

## Ground Floor

KITCHEN	4400 x 4160 mm	14'5" x 13'8"
FAMILY AREA	4900 x 2760 mm	16'1" x 9'1"
DINING ROOM	3780 x 3650 mm	12'5" x 12'0"
DRAWING ROOM	6060 x 4030 mm	19'10" x 13'2"
STUDY	3150 x 2500 mm	10'4" x 8'2"

## First Floor

MASTER BEDROOM	5130 x 4300 mm	16'10" x 14'1"
BEDROOM 2	4760 x 3880 mm	15'7" x 12'9"
BEDROOM 3	3950 x 2960 mm	12'11" x 9'8"

Swallowhurst Call for more information  
Bookhurst Road  
Cranleigh **0844 417 5998**  
Surrey  
GU6 7DP [lindenhomes.co.uk/swallowhurst](http://lindenhomes.co.uk/swallowhurst)

Computer Generated image shown not to scale. Finishes and materials may vary from those shown on a plot by plot basis and landscaping is illustrative only. The image does not represent any contractual offer on behalf of Linden Homes. Please ask your sales executive for specific details.

\*Home 7 is handed. Please note that all floorplans and dimensions are taken from architectural drawings and are for guidance only. Dimensions stated are within a tolerance of plus or minus 50mm. Overall dimensions are for guidance only. Please ask your Sales Executive for specific details.



# Swallowhurst

---

CRANLEIGH

A JOINT PARTNERSHIP DEVELOPMENT BOUGHT TO YOU BY



THE HASCOMBE

# HOMES 4, 6 & 8

3 bed detached house



COMPUTER GENERATED IMAGE. FOR ILLUSTRATIVE PURPOSES ONLY. NOT TO SCALE.



Ground Floor



First Floor

- C Cupboard
- AC Airing Cupboard
- W Wardrobe

2057.4 SQ FT  
191.1 SQ M

## Ground Floor

DRAWING ROOM	6280 x 3890 mm	20'7" x 12'9"
KITCHEN/BREAKFAST	4420 x 4130 mm	14'6" x 13'7"
FAMILY AREA	4130 x 3070 mm	13'7" x 10'1"
DINING ROOM	4590 x 3230 mm	15'1" x 10'7"
STUDY	3230 x 2420 mm	10'7" x 7'11"

## First Floor

MASTER BEDROOM	4680 x 3910 mm	15'4" x 12'10"
BEDROOM 2	3840 x 3210 mm	12'7" x 10'6"
BEDROOM 3	3760 x 3220 mm	12'4" x 10'7"

Swallowhurst Call for more information  
Bookhurst Road  
Cranleigh **0844 417 5998**  
Surrey  
GU6 7DP [lindenhomes.co.uk/swallowhurst](http://lindenhomes.co.uk/swallowhurst)



# Swallowhurst

---

CRANLEIGH

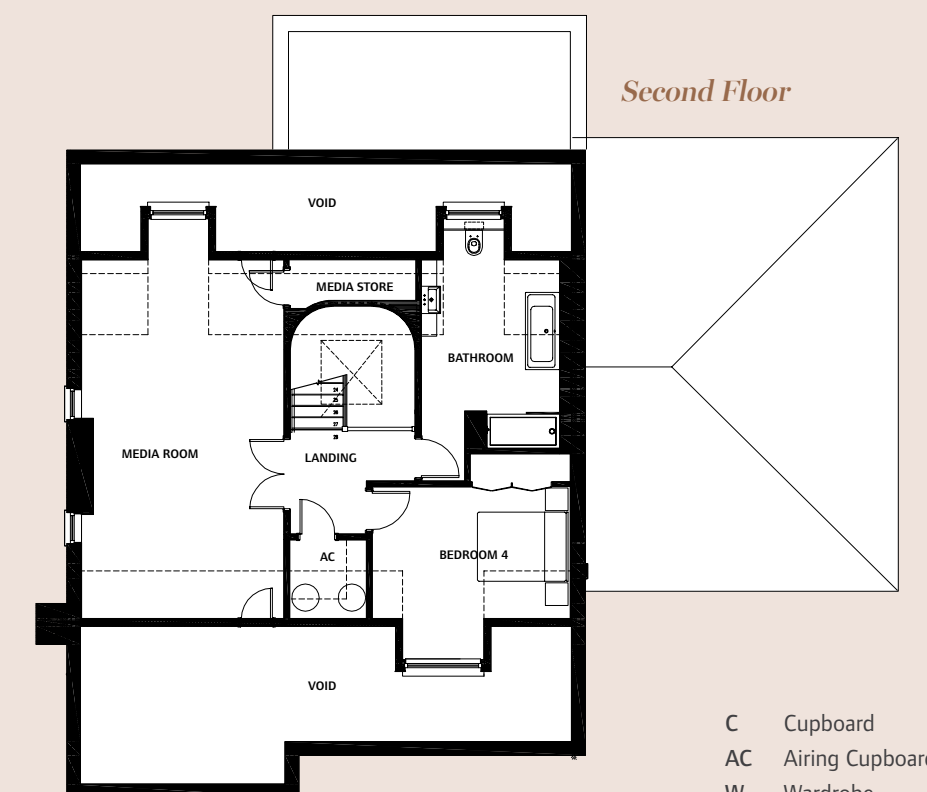
A JOINT PARTNERSHIP DEVELOPMENT BOUGHT TO YOU BY



## THE DUNSFOLD

# HOMES 9 & 11\*

4 bed detached house



4271.5 SQ FT  
396.8 SQ M

### Ground Floor

KITCHEN	6150 x 5700 mm	20'2" x 18'8"
BREAKFAST AREA	6150 x 2950 mm	20'2" x 9'8"
FAMILY ROOM	6940 x 4490 mm	22'9" x 14'9"
DINING ROOM	5700 x 4760 mm	18'8" x 15'7"
DRAWING ROOM	6530 x 4460 mm	21'5" x 14'8"

### First Floor

MASTER BEDROOM	7760 x 4940 mm	25'5" x 16'2"
BEDROOM 2	4460 x 4410 mm	14'8" x 14'5"
BEDROOM 3	4790 x 3480 mm	15'8" x 11'5"

### Second Floor

BEDROOM 4	4340 x 2870 mm	14'2" x 9'6"
MEDIA ROOM	7800 x 4460 mm	25'7" x 14'7"

C Cupboard  
AC Airing Cupboard  
W Wardrobe

Swallowhurst  
Bookhurst Road  
Cranleigh  
Surrey  
GU6 7DP

Call for more information  
**0844 417 5998**  
lindenhomes.co.uk/swallowhurst

Computer Generated image shown not to scale. Finishes and materials may vary from those shown on a plot by plot basis and landscaping is illustrative only. The image does not represent any contractual offer on behalf of Linden Homes. Please ask your sales executive for specific details.

\*Home 11 is handed. Please note that all floorplans and dimensions are taken from architectural drawings and are for guidance only. Dimensions stated are within a tolerance of plus or minus 50mm. Overall dimensions are for guidance only. Please ask your Sales Executive for specific details.





# Swallowhurst

---

CRANLEIGH

A JOINT PARTNERSHIP DEVELOPMENT BOUGHT TO YOU BY



## THE CANFOLD

# HOME 10

4 bed detached house



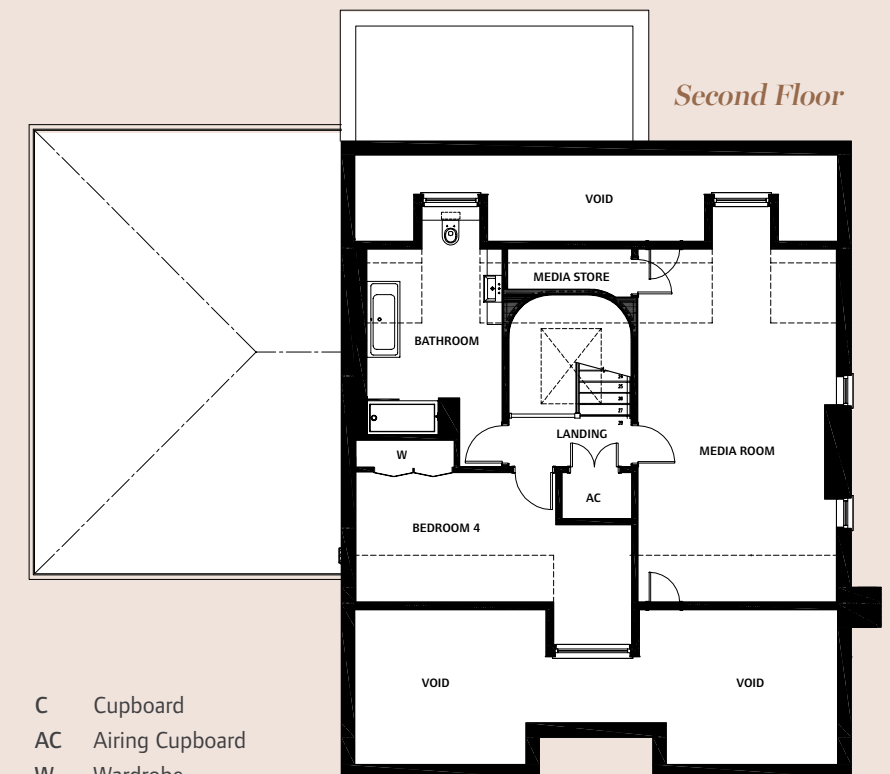
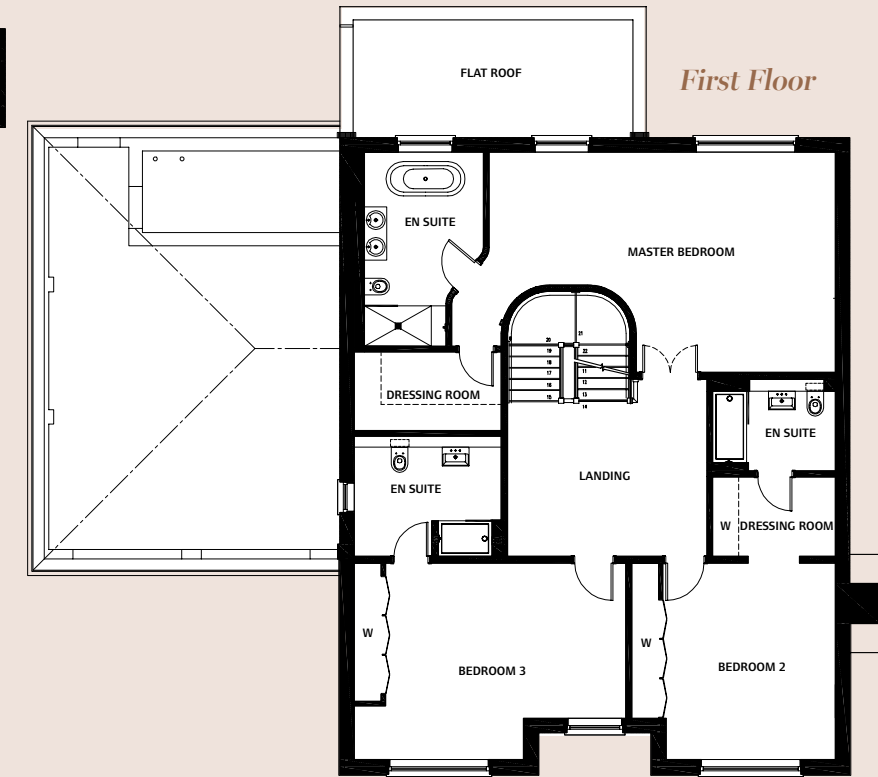
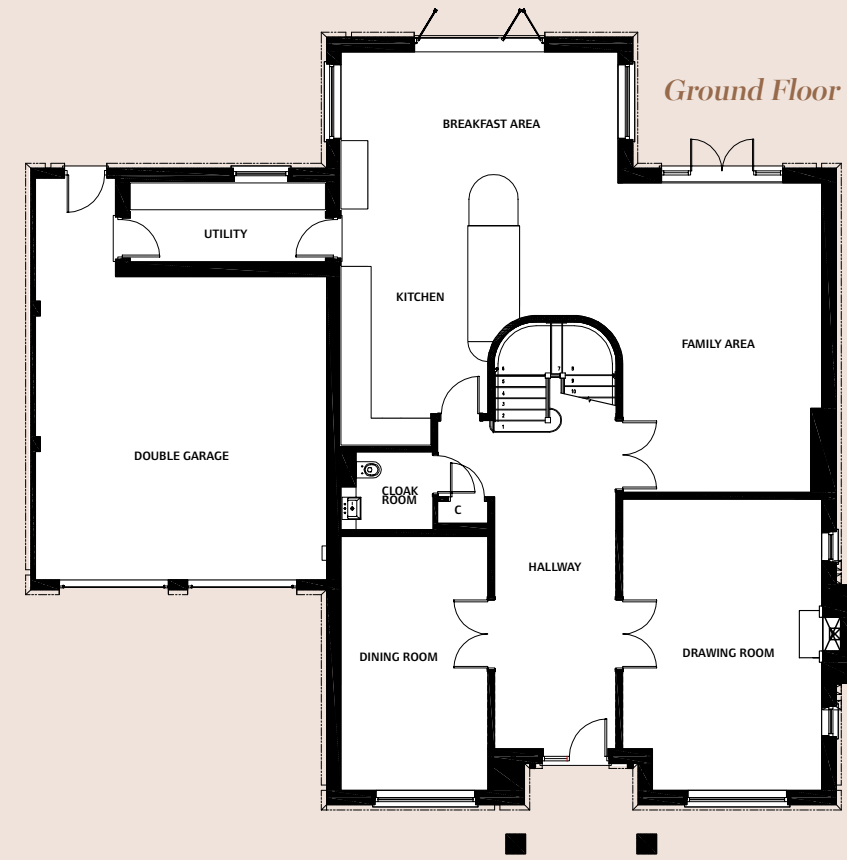
THE SHOWGROUND

COMPUTER GENERATED IMAGE. FOR ILLUSTRATIVE PURPOSES ONLY. NOT TO SCALE.

Swallowhurst  
Bookhurst Road  
Cranleigh  
Surrey  
GU6 7DP

Call for more information  
**0844 417 5998**  
lindenhomes.co.uk/swallowhurst

Computer Generated image shown not to scale. Finishes and materials may vary from those shown on a plot by plot basis and landscaping is illustrative only. The image does not represent any contractual offer on behalf of Linden Homes. Please ask your sales executive for specific details.



4312.4 SQ FT  
400.6 SQ M

### Ground Floor

KITCHEN	4910 x 4000 mm	16'1" x 13'2"
BREAKFAST AREA	6220 x 3900 mm	20'5" x 12'10"
FAMILY AREA	6940 x 4460 mm	22'9" x 14'8"
DINING ROOM	5690 x 3290 mm	18'8" x 10'10"
DRAWING ROOM	6530 x 4460 mm	21'5" x 14'8"

### First Floor

MASTER BEDROOM	7760 x 4940 mm	25'5" x 16'2"
BEDROOM 2	4410 x 3860 mm	14'5" x 12'8"
BEDROOM 3	6090 x 4410 mm	20'0" x 14'5"

### Second Floor

BEDROOM 4	6190 x 2900 mm	20'4" x 9'6"
MEDIA ROOM	7910 x 4460 mm	25'11" x 14'7"

C Cupboard  
AC Airing Cupboard  
W Wardrobe

\*Home 11 is handed. Please note that all floorplans and dimensions are taken from architectural drawings and are for guidance only. Dimensions stated are within a tolerance of plus or minus 50mm. Overall dimensions are for guidance only. Please ask your Sales Executive for specific details.